



## Slump Cone

Code: [34-0110](#)

Product Group: [Slump Test, Slump Cones](#)

Complies with EN 12350-2 (BS 1881-102), ASTM C143/C143M, AASHTO T119

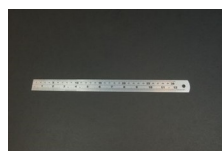
## Standards

ASTM C143/C143M, ASTM C192, AASHTO T119

## Specification

Construction	Seamless, heavy-gauge spun steel; 0.45" (1.1 mm) min. Thickness.
Finish	Plated for rust and corrosion resistance.
Dimensions	100 mm top diam. X 200 mm bottom diam. (without foot pieces) x 300 mm h.
Weights	Net 5.5 lbs (2.5kg)

## Accessories



### 300 mm Stainless Steel Rule.

Code: [34-0140](#)



### Aluminium Scoop Large

Code: [81-0220](#)



### Base Plate for Slump Test.

Code: [34-0160](#)



## Cement Pan

Code: 34-0152



## Graduated Tamping Rod

Code: 34-0132



## Sample Tray - 1200 x 1160 x 50 mm

Code: 81-4230



## Shovel - With flat blade

Code: 81-0240



## Slump Cone Base

Code: 34-0150



## Slump Cone Funnel

Code: 34-0180

---



## Tamping Rod 16mm Dia X 600mm long hemispherical at both ends.

Code: 34-0130

---

## Spares/Consumables



## Stopwatch

Code: 81-0521

---

## Alternatives



## Metal Slump Cone - English

Code: 34-0108