

Slump Test

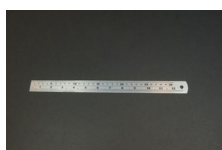


Aluminium Scoop Large

Code: [81-0220](#)

Attributes: [Description](#) = Large Aluminium Scoop, Weight, kg = 0.294 kg

Standards:



300 mm Stainless Steel Rule.

Code: [34-0140](#)

Attributes: [Description](#) = Steel Rule, Weight, kg = 0.06 kg

Standards: [EN 12350-2](#)



Slump Test Set BS & ASTM. C/W Slump Cone Base Plate Steel Rule Tamping Rod & Funnel.

Code: [34-0192](#)

Attributes: [Description](#) = Slump Test Set, Weight, kg = 6.87 kg

Standards:



Slump Cone

Code: [34-0110](#)

Attributes: [Description](#) = Slump Cone, Weight, kg = 1.3 kg, Weight, lbs = 5.5

Standards: [ASTM C143/C143M](#), [ASTM C192](#), [AASHTO T119](#)



Slump Cone Funnel

Code: [34-0180](#)

Attributes: [Description](#) = Slump Cone Funnel, Weight, kg = 1.3 kg, Base Dimensions l x w x h, " = 208.59

Standards:



Base Plate for Slump Test.

Code: [34-0160](#)

Attributes: [Description](#) = Base Plate, Weight, kg = 2 kg

Standards:

Product Group Sheet

www.ele.com
+44 (0) 01525 249 200



Tamping Rod 16mm Dia X 600mm long hemispherical at both ends.

Code: [34-0130](#)

Attributes: [Description](#) = Tamping Rod, Weight, kg = 0.937 kg

Standards:
