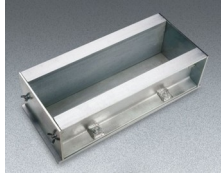


Heavy Duty Beam Forms

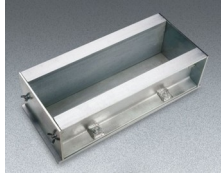


Heavy-Duty Beam Forms

Code: [34-5057](#)

Attributes: [Description](#) = Heavy-Duty Beam Form - 6 x 6 x 24"

Standards: [ASTM C31](#), [ASTM C78](#), [ASTM C192](#), [AASHTO T23](#), [AASHTO T97](#), [ASTM T126](#)



Heavy-Duty Beam Forms

Code: [34-5055](#)

Attributes: [Description](#) = Heavy-Duty Beam Form - 6 x 6 x 21"

Standards: [ASTM C31](#), [ASTM C78](#), [ASTM C192](#), [AASHTO T23](#), [AASHTO T97](#), [ASTM T126](#)
