



IF IT'S WORTH BUILDING, IT'S WORTH TESTING

Contents

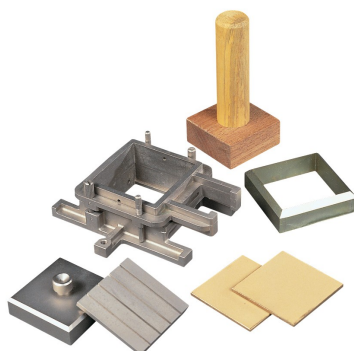
www.ele.com
+44 (0) 01525 249 200



This wishlist was generated on 31/03/2016, and contains the following Products:

26-2213

Shear Box Assembly 2.5 Inch Diameter



Shear Box Assembly 2.5 Inch Diameter

Code: 26-2213

Product Group: [Shear Box Assemblies](#), [Shear Box Assemblies](#)

- Manufactured from corrosion resistant materials
- Sample size 2.5 inch dia x 1 inch height meeting ASTM D3080
- Incorporates PTFE faced box separation screws to reduce friction
- Supplied complete with upper and lower porous plates and loading pad
- Suitable for quick undrained or drained/residual tests.

Standards

ASTM D3080, AASHTO T236

Further Information

All shearbox assemblies are designed to fit the carriage of 26-2114 series Digital Direct/Residual Shear Apparatus. They are supplied complete with three porous plates, one retaining plate and a loading pad. The three sizes supplied comply with the relevant requirements of BS 1377 and ASTM D3080. All assemblies can be used for quick shear tests or drained/residual shear tests.

Optional accessories are available including specimen cutters and extrusion tools.

Specification

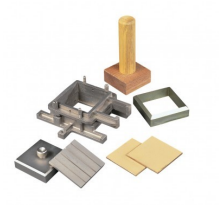
Specimen area	1.5 inch diameter
Specimen thickness	1 inch
Weight kg	2.8
Relevant standard	ASTM D3080

Spares/Consumables



Porous Plate 2.5 Inch Diameter

Code: 26-2213/10



Specimen Cutter 2.5 Inch Diameter.

Code: [26-2217](#)



Specimen Extrusion Tool 2.5 Inch Diameter.

Code: [26-2221](#)