



IF IT'S WORTH BUILDING, IT'S WORTH TESTING

This wishlist was generated on 13/04/2016, and contains the following Products:

---

36-1410/01

**1000/500kN Motorised Compression/Tension Machine (complete with grips)  
220-240V 50/60Hz 1Ph.**

---

34-6431/01

**Vibrating Poker 25mm Dia Tip 290mm Long. 220-240V 50/60Hz 1Ph.**

---

35-4043

**Gwt Permeability Kit 0-6 Bar Range Supplied In A Carrying Case.**

---

78-5485/01

**Electronic Balance - 20 000 g x 0.1 g**

---

80-0200/01

**ELE Sieve Shaker**

---

42-5310/01

**Los Angeles Abrasion Machine with CE Safety Cabinet W/ Microswitches.  
220-240V 50Hz 1Ph.**

---

77-0115

**Digital Point Load Test Apparatus.**

---

78-1250/01

**225 Litre Drying Oven**

---

24-0434

**Liquid Limit Device ASTM/ Aashto Hand-Operated W/ Revolution Counter.  
Supplied Less Grooving Tool.**

---

24-0417/01

**Motorised Liquid Limit Device W/ Counter BS 220-240V 50Hz 1Ph.**

---

26-2114/01

**Digital Direct/Residual Shear Apparatus Complete with Lever Loading  
Assembly. 220-240V 50/60Hz 1Ph.**

---

24-4125/01

**High Speed Stirrer Complete with Paddle Cup & Baffle. 220-240V 50/60Hz 1Ph.**

---

25-0455

**Consolidation Cell Complete 50mm Diameter Sample.**

---

---

27-1300/01

**DSU Electronic Readout and Control System 220 - 240 V AC 50/60 Hz**

---

27-1773

**DS7.2 One-Dimensional Consolidation Program for Windows 7, 32/64 bit**

---

23-7452

**Speedy Moisture Tester D2 Large 0-20% Moisture Range. Supplied Less Calcium Carbide**

---

29-3800

**Plate Bearing Apparatus Complete. 500kN Capacity**

---

29-5300

**Core Cutter 100mm Id By 130mm Long.**

---

24-9090/01

**Automatic Soil Compactor BS 220-240V 50Hz 1Ph.**

---

24-9060

**Proctor Mould 1/30 Ft3.**

---

25-0607

**Compaction Permeameter.**

---

25-0593

**Constant Level Tank.**

---

24-9150/01

**Cbr-Test 50 Machine 50kN Capacity BS and ASTM Supplied with Stabilising Bar.**

---

78-0860

**50kN Load Measuring Ring**

---

24-4865/01

**Constant Temperature Bath 0 to 99.9 Deg.C X 0.1 Deg.C with Led Display and False Base Support.**

---

25-0580

**Constant Head Permeability Cell 75mm Diameter Specimen.**

---

25-3518/01

**Digital Tritest 50**

---

---

26-1746

**Bladder-Type Air/Water Pressure Assembly. 1000 Kpa Maximum Working Pressure.**

---

26-1872

**Six-Way Pneumatic Pressure Control Panel.**

---

26-1880

**Universal Pump and Pressure Indicating Panel 1700Kpa.**

---

25-4117

**70mm Triaxial Cell 1700Kpa with 5 Pressure/ Drainage Ports. Supplied with Two Valves.**

---

25-4176

**70mm Base Adaptor for 70mm Cells.**

---

42-1000/01

**Buoyancy Balance 6Kg X 0.1G. Supplied with Support Frame Water Tank & Suspension Hook.**

---

42-4000

**Aggregate Impact Value Apparatus Complete with 16mm Dia X 600mm Long Rod**

---

35-1480

**Standard Concrete Test Hammer**

---

35-2302/09

**Pundit Lab Ultrasonic Concrete Tester 110-240V 50/60Hz 1Ph**

---

39-0035/01

**Automatic/Manual 5 litre nominal capacity Mortar Mixer**

---

38-1000

**Blaine Air Permeability Apparatus**

---

34-3540/01

**ELE Concrete Mixer 56/40 Litre Capacity.**

---

38-1200

**Le Chatelier Flask**

---

39-1100

## Three-gang Mould

---

38-3005

## Le Chatelier Mould

---

38-2010

## Vicat Frame

---

38-6000

## Flow Table

---



## 1000/500kN Motorised Compression/Tension Machine (complete with grips) 220-240V 50/60Hz 1Ph.

Code: 36-1410/01

Product Group: Compression Tension Machine

- Compression testing of concrete cubes and cylinders
- Calibration in compression is accurate to 1% of indicated load, satisfying BS EN ISO 7500-1; ASTM E4
- Self-aligning upper platen for compression tests
- Easily fitted grips for tension testing

The load frame is of high quality steel construction with a fixed upper head carrying a ball-seated platen. The ram carrying the lower platen is contained in the base of the frame and is protected by a shroud. Sufficient clearance between the platens allows the compression testing of concrete cylinders up to 160 mm diameter by 320 mm long. To allow for the compression testing of concrete cubes, a range of distance pieces is available.

Tension tests on steel reinforcing bars are conducted by replacing the platens with special grips. As standard the machine is supplied with the following size grips for testing bars, 10 mm, 12 mm, 20 mm, and 25 mm diameter. The machine is motorised, incorporating a change-over lever to select either compression or tension output from the pump.

### Further Information

**\*\*NOT AVAILABLE FOR SALE IN THE USA\*\***

220-240V 50/60 Hz 1Ph.



## Vibrating Poker 25mm Dia Tip 290mm Long. 220-240V 50/60Hz 1Ph.

Code: [34-6431/01](#)

Product Group: [Vibrating Poker](#)

- High amplitude and speed
- Flexible shaft for long life

Used as an internal means of vibratory compaction. The poker is inserted into the concrete which is then compacted by the high frequency vibration action. For use in either laboratory or site environments, the diameter of the vibrating tip must not exceed 25% of the smallest dimension of the specimen.

### Further Information

**\*\*NOT AVAILABLE FOR SALE IN THE USA\*\***

For 220 - 240 V AC, 50 - 60 Hz, 1 ph

### Specification

Tip Dimensions	22 mm diameter x 250 mm long
Shaft dimensions	2.0 m long
Speed	12,000 vibrations/min.
Overall Dimensions	200 x 300 x 350 mm
Weight	7 kg





## Gwt Permeability Kit 0-6 Bar Range Supplied In A Carrying Case.

Code: [35-4043](#)

Product Group: [Permeability of Concrete](#)

The Water Permeability Test Kit is a portable unit capable of measuring in-situ permeability. It has a dual measuring range of 0 - 1.5 bar or 0 - 6 bar. Consisting of a sealed water reservoir and all necessary attachments, the unit is supplied complete in a carrying case. Dimensions 460 x 310 x 100 mm (l x w x h).

### Further Information

**\*\*NOT AVAILABLE FOR SALE IN THE USA\*\***





## Electronic Balance - 20 000 g x 0.1 g

Code: [78-5485/01](#)

Product Group: [Electronic Balances](#)

## Further Information

**\*\*Not available for sale in the USA\*\***

## Specification

Capacity resolution	20000 g x 0.1 g
Pan size	340 x 300 mm
Mains and battery	Yes
Dimensions (l x w x h)	314 x 460 x 125 mm
Weight	18 kg



## ELE Sieve Shaker

Code: [80-0200/01](#)

Product Group: [ELE Sieve Shaker](#)

The ELE sieve shaker is powered by an electromagnetic drive that has no rotating parts to wear making it maintenance free and extremely quiet in operation.

The unit features a triple Vertical-Lateral-Rotary vibrating action that moves the sample over the sieve producing faster more efficient sieving, while the rapid vertical movements also help keep the apertures from blinding.

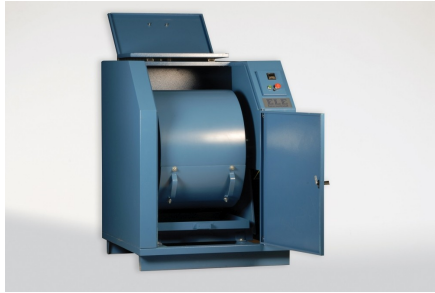
The shaker is ideal for laboratory or on site use. It is robust, compact and sufficiently lightweight to be portable. The separate digital microprocessor controlled console unit incorporates a keypad for setting the sieving program and is isolated from any effects of vibration from the shaker.

As standard the shaker includes, timer 0-999 minutes, adjustable vibration intensity and adjustable intermittent or continuous operation.

## Further Information

**\*\*NOT AVAILABLE FOR SALE IN THE USA\*\***

The unit accepts up to ten 200 mm or 8 inch, full height, diameter sieves and lid and receiver, or up to six 300 mm or 12 inch diameter sieves and lid and receiver. Complete as specified. Dimensions (l x w x h) 380 x 440 x 1085 mm. For 220 - 240 V AC, 50 Hz 1ph.



## Los Angeles Abrasion Machine with CE Safety Cabinet W/ Microswitches. 220-240V 50Hz 1Ph.

Code: [42-5310/01](#)

Product Group: [Los Angeles Abrasion Machine](#)

The machine consists of a closed hollow cylindrical steel drum rotating around its horizontal axis on ball bearing units mounted on a sturdy base framework.

The drum is driven at a speed of between 30 - 33 rpm via an enclosed belt drive arrangement from an electric motor/gearbox unit situated on the base frame. Inside the drum a full length steel shelf is attached, accessed by a dust-proof opening.

The cylinder incorporates a removable internal shelf, one shelf position is provided to meet the requirements of both the ASTM and EN test standards.

Controls are located easily on the right-hand side of the machine at convenient operator height.

Start and stop push buttons and a subtracting revolution counter allows the user to preset the number of revolutions before an automatic stop.

### Standards

EN 1097-2, ASTM C131, ASTM C535, NF P18-573

### Further Information

\*\*NOT AVAILABLE FOR SALE IN THE USA\*\*



## Digital Point Load Test Apparatus.

Code: 77-0115

Product Group: Digital Point Load Tester, Point-Load Strength Test

Originally developed at Imperial College, London, the apparatus comprises a two-column fixed crosshead frame and a hand operated hydraulic jack.

Pressure applied by the jack extends the piston carrying the lower conical point. The upper point is fixed to the crosshead with a scale mounted on the frame to provide specimen diameter information for use in point load strength index calculations. Pressure is indicated directly on the digital readout unit. Loads up to 55 kN can be applied to specimens as large as 101.6 mm in diameter.

The apparatus is supplied complete with heavy-duty face mask.

## Standards

EN DD ENV 1997-2, ASTM D5731

## Specification

Capacity	55 kN
Maximum sample size	101.6 mm
Load range	0 to 55 kN x 0.001 kN
Weight	25 kg
Capacity	13 ,000 lbf. (55 kN).
Specimen Size	4" (101.6 mm) maximum.
Load Range	0-13 ,000 lbf. (55 kN) x 0.2 lbf. (0.001 kN).
Weight	Net 60 lbs. (27.2 kg).

## Spares/Consumables



## Set of Cones for Digital Point Load Tester

Code: 77-0115/10



## 225 Litre Drying Oven

Code: 78-1250/01

Product Group: Percentage Refusal Density (PRD),  
Oven Drying Method, Oven Drying Method, Oven  
Drying Method

## Standards

EN 12697-32, EN 13280-4, BS 598-104, BS 1377

## Specification

Capacity	225 litres
External Dimensions (l x w x h)	540 x 1040 x 940
Internal Dimensions (l x w x h)	440 x 920 x 600
Fluctuation	$\pm 0.75^{\circ}\text{C}$
Rated power heater elements	2000 W
Shelves supplied	3
Shelf positions	4
Weight	80 kg



## **Liquid Limit Device ASTM/ Aashto Hand-Operated W/ Revolution Counter. Supplied Less Grooving Tool.**

Code: [24-0434](#)

Product Group: [Casagrande Method](#)

Complete with revolution counter. Supplied less grooving tool.

### **Standards**

ASTM D4318, AASHTO T89



## Motorised Liquid Limit Device W/ Counter BS 220-240V 50Hz 1Ph.

Code: [24-0417/01](#)

Product Group: [Casagrande Method](#)

Complete with revolution counter and motor.

### Standards

BS 1377, EN 1997-2





## Digital Direct/Residual Shear Apparatus Complete with Lever Loading Assembly. 220-240V 50/60Hz 1Ph.

Code: 26-2114/01

Product Group: [Direct/Residual Shear Apparatus](#),  
[Direct/Residual Shear Apparatus](#)

- Microprocessor control
- Large on-board LCD screen display
- Direct entry via touch sensitive keyboard
- Rapid approach and return to start datum
- Fully variable speed, 0.00001 to 9.99999 mm/minute
- Accepts specimens up to 100 mm square

The ELE Direct Shear Apparatus accepts specimens 60 mm, 100 mm square or 2.5 inches in diameter. The use of a microprocessor controlled drive system and keyboard entry gives the apparatus a wide range of features that include pause and speed reset during test, RS 232C interface, operator programming of speed and control functions, self test diagnostics and many other features. A return to start datum provides a positive means of reversing the shearbox when either preparing for a new test or continuing with residual testing procedures.

Safety forward/reverse travel limit switches are fitted as standard and monitored through the electronics system control.

The electronics are housed in a modern moulded shroud, which includes a large LCD display and keyboard entry. The apparatus is enclosed in a robustly constructed case, has been designed for floor mounting and is supplied complete with carriage, loading hanger and 10:1 lever loading device.

## Standards

ASTM D3080, AASHTO T236, BS 1377, EN 1997-2

## Further Information

for 220 - 240 V AC, 50 - 60 Hz, 1 ph.

## Specification

Sample Size

Accepts either 2.42", 2.5" diam.; 60 mm square samples using accessory shear box assemblies, not included.

Speed Range

Variable in either English or Metric units

# Product Sheet

www.ele.com  
+44 (0) 01525 249 200



	between 0.000001" (0.00001 mm) to 0.399999" (9.99999 mm) per minute.
Shear Force	1,000 lbf. (4.5 kN) maximum.
Vertical Load	2,200 lbf. (1,000 kN) using 10:1 lever ratio.
Dimensions	44.7" l. x 12 .6" w. x 49.6" h. (1,135 x 320 x 1,260 mm).
Weight	Net 181 lbs. (82 kg).

## Spares/Consumables



### Dial Indicator - 1.0" Range

Code: [88-4100](#)



## High Speed Stirrer Complete with Paddle Cup & Baffle. 220-240V 50/60Hz 1Ph.

Code: [24-4125/01](#)

Product Group: [Mechanical Analysis Stirrer](#)

Compact bench top stirrer used for dispersing soil samples in water. Supplied complete with mixing paddle and dispersion cup with baffle. Beaker position maintained by column retainer.

## Standards

BS 1377, ASTM D422, AASHTO T88

## Spares/Consumables



### Mixing Paddle for 24-4125 Series High Speed Stirrer

Code: [24-4125/10](#)



### Soil Dispersion Cup & Baffle.

Code: [24-4125/11](#)



## Consolidation Cell Complete 50mm Diameter Sample.

Code: [25-0455](#)

Product Group: High pressure application consolidation cells and accessories, Pneumatic Consolidation Apparatus, Fixed Ring Consolidation, Table Top Consolidation Apparatus

## Specification

Application	High pressure
Specimen Dia	50 mm
Specimen area	1963 mm <sup>2</sup>
Beam ratio	10:1
Load kg	1
Stress	50 kPa
Typical max stress	8 MPa
Stress for 1 kg m <sup>2</sup>	50 kPa
Application	High Pressure
Specimen Diameter	50 mm
Specimen Area	1963 mm <sup>2</sup>
Beam Ratio	10:01
Load	1 kg
Stress	50 kPa
Typical Maximum Stress	8 MPa
Stress for 1 kg	50 kPa

## Spares/Consumables



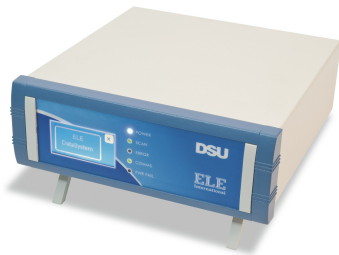
## 50mm Dia Upper and Lower Porous Stones for Use on EL25-0455 Series Cell.

Code: [25-0455/13](#)



## Cutting Ring 50mm Cell.

Code: [25-0458](#)



## DSU Electronic Readout and Control System 220 - 240 V AC 50/60 Hz

Code: [27-1300/01](#)

Product Group: [Electronic Instrumentation, Data Logging with the DSU, Data Logging with the DSU](#)

- Download the full brochure here [\[../../../../Page/the-new-dsu\]](#)
- 4 channel automatic control and data-logging unit
- Automatic, dual-frame control
- Performs CBR, Marshall, Unconfined Compression, Direct and Residual Shear, One-Dimensional Consolidation, Unconfined Undrained, Consolidated Drained and Unconsolidated Drained tests
- LAN connection - software can be running anywhere on your server
- Never lose data from power fails - 2 gigabytes of non-volatile memory
- Extended warranty

The Data System Unit (DSU) is a versatile instrument designed to accomodate the general logging requirements of geotechnical and materials testing engineers. Its intelligent interface allows the user to work with a range of different sensors.

### Further Information

Become a member of the ELE International web site, add this new product to a wishlist to receive a quote! Click here [\[../../../../Login\]](#)

Please note that this product is not yet available in the USA, we will let you know as soon as it is ready!



## DS7.2 One-Dimensional Consolidation Program for Windows 7, 32/64 bit

Code: [27-1773](#)

Product Group: [DS7, DS7.2 One-Dimensional Consolidation Software](#)

DS7.1 Consolidation Software provides all basic functions needed to record and analyse consolidation test data. Options are available for monitoring settlement on a log time or square-root time basis. Printouts and graphical plots are available for all stages including  $M_v$  and  $C_v$  moisture content, voids ratio plots, and initial sample conditions.



## Speedy Moisture Tester D2 Large 0-20% Moisture Range. Supplied Less Calcium Carbide

Code: [23-7452](#)

Product Group: [Rapid method by Speedy Moisture Tester](#), [Rapid Moisture Testers](#), [Rapid method by Speedy Moisture Tester](#)

Uses a technique based on the fact that water will react with calcium carbide to form a gas and that the quantity of gas formed is directly proportional to the water present. The gas pressure is indicated on a built-in pressure gauge. The pressure gauge calibrated in percentage of moisture. Has a moisture range of 0-20% with gauge divisions every 0.2%. Holds a sample size of 20 g. Includes an electronic balance of 200 g capacity x 0.1 g readability and is supplied in plastic carrying case.

## Standards

BS 812, ASTM D4944, AASHTO T217

## Specification

Model	D2 Large
Moisture Range	0 to 20%
Gauge divisions	0.20%
Sample weight g	20
Weight complete kg	8.4

## Spares/Consumables



## Portable Electronic Balance

Code: [23-7452/12](#)





## Plate Bearing Apparatus Complete. 500kN Capacity

Code: 29-3800

Product Group: In-situ Testing

Applications include the determination of bearing capacity of the soil in situ, designing for static loads on spread footings, and repetitive and non-repetitive plate loading tests of soils and flexible pavements.

Manufactured from machined steel plate with a finished thickness exceeding 25 mm. The plate has concentric markings on one face. All plates are supplied with two lifting eyes except for the 150 mm dia plate.

NOTE: to successfully perform the test, a reaction load is required.

IMPORTANT: The equipment is used in conjunction with a reaction beam. This is not supplied with the equipment.

## Standards

BS 1377, EN 1997-3, ASTM D1194, ASTM D1195, ASTM D1196

## Further Information

Comprising of:

- Hydraulic Jack 500 kN capacity
- Pressure system
- Datum bar
- 4x dial gauges 50 mm travel x 0.01 mm divisions
- 4x bearing plates: 150 mm, 305 mm, 455 mm and 760 mm diameter

## Specification

Loading jack	500 kN capacity with integral ball seating
Pump	Hand operated, single speed with integral oil reservoir
Hose	3 m long. Maximum pressure 70 MPa with quick release couplings
Gauge	100 mm dia with quick release couplings and graphs to convert readings to kN, kgf and lbf

# Product Sheet

[www.ele.com](http://www.ele.com)  
+44 (0) 01525 249 200



Weights

Loading jack 24 kg.  
Pressure system 12.5 kg



## Core Cutter 100mm Id By 130mm Long.

Code: [29-5300](#)

Product Group: [Core Cutter Apparatus](#)

## Standards

BS 1377



## Automatic Soil Compactor BS 220-240V 50Hz 1Ph.

Code: [24-9090/01](#)

Product Group: [Automatic Compactors](#)

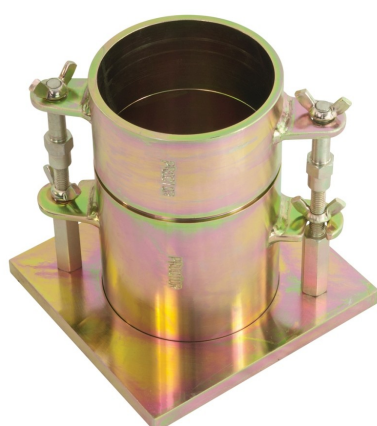
Preset blow pattern ensures an even compaction, includes solid state controls for reliability and maintenance. An automatic digital counter resets to zero on the completion of a test. An adjustable rammer with a drop height of 300-450mm, an adjustable rammer weight of 2.5-4-5kg. A preset number of blows per layer can be set by thumb wheel control. A compaction rate of approximately 26 blows per minute. Accepts BS Standard Compaction and CBR moulds; also meets the requirements of BS1377. Voltage 220-240v ac 50/60hz 1ph.

## Standards

BS 1377, EN 1997-2, EN 1924

## Specification

Dimensions (l x w x h)	430 x 240 x 1400 mm
Rammer BS/EN	Circular faced, 50 mm dia, adjustable to 2.5 kg or 4.5 kg weight.
Rammer ASTM	Circular faced, 2 in (50.8 mm) dia, adjustable to 5.5 lb (2.5 kg) or 10 lb (4.5 kg) weight.
Drop BS/EN	Adjustable to 300 mm or 450 mm
Drop ASTM	Adjustable to 12 in (305 mm) or 18 in (457 mm)
Weight kg	98



## Proctor Mould 1/30 Ft3.

Code: 24-9060

Product Group: Proctor compaction, Accessories for  
ASTM and Proctor compaction

## Standards

ASTM D558, ASTM D559, ASTM D560, ASTM D698, ASTM D1557, AASHTO T99, AASHTO T134,  
AASHTO T135, AASHTO T136, AASHTO T180

## Specification

Dimensions	101.6 mm dia x 116.4 mm high
Rammer Mould Volume	1/30 ft <sup>3</sup>
Construction	All steel, threaded studs with wing nuts, plated.
Weight	5.4 kg



## Compaction Permeameter.

Code: [25-0607](#)

Product Group: [Compaction Permeameter](#)

101.6 mm

## Specification

Mould	Machined seamless steel tubing, plated
Capacity	101.6 x 116.4 mm (inside dia x h) 1/30 ft <sup>3</sup>
Collar	50.8 mm high, machined
Top	Overflow valve assembly and water connection
Base	Cast aluminum, with inlet/outlet fitting
Porous stone	101.6 x 12.7 mm (diameter x thickness)
Weights	5.4 kg



## Constant Level Tank.

Code: [25-0593](#)

Product Group: [Constant Head Apparatus](#)

Manufactured from transparent plastic with attachment for wall mounting. The inlet, outlet and overflow pipes are fitted to the base of the tank and can be adjusted for height within the tank. Supplied complete with connecting tubing.

## Standards

BS 1377, EN 1997-2, ASTM D2434, AASHTO T215





## Cbr-Test 50 Machine 50kN Capacity BS and ASTM Supplied with Stabilising Bar.

Code: [24-9150/01](#)

Product Group: [Load frames](#)

- Single speed machine (BS/EN and ASTM)
- Rapid platen adjustment
- Complete with stabilising bar
- Compact, bench-mounting design
- Options for mechanical or electronic measurement

Designed for performing laboratory CBR tests to BS 1377, EN13286-47 and ASTM D1883, this bench mounting machine comprises a twin column frame incorporating a motorised drive system. Rapid adjustment of the platen is provided, which enables daylight to be taken up quickly and also close control of application of a seating load.

## Standards

BS 1377, BS 1924, EN 13286-47, ASTM D1883, AASHTO T193

## Specification

Dimensions (l x w x h)	550 x 400 x 1220 mm
Max vertical clearance	800 mm
Horizontal clearance	255 mm
Platen diameter	133 mm
Platen travel	105 mm
Weight kg	80



## 50kN Load Measuring Ring

Code: 78-0860

Product Group: Clamped Boss Load Rings, Digital Tritest 50 Load Frame, Proving Rings, Accessories for the Marshall test, CBR-Test 50 Machine, Load Measurement, CBR Loading Press, Hand-Operated, Force measurement, Load Measurement

Calibrated in compression.

## Standards

EN 12697-34

## Specification

Capacity: kN, kgf, lbf	50.0, 5000, 11,200
Typical Design sensitivity: N/div, kgf/div, lbf/div	45.5, 4.54, 10.18
Overall height mm	248
Approx weight kg	7.9
Capacity	50 kN
Value of CBR	Above 40%
Capacity - lbf	11,200
Capacity - kN	50
Capacity - kgf	5,000
Typical Design Sensitivity - lbf/div	10.18
Typical Design Sensitivity - kN/div	45.5
Typical Design Sensitivity - Kgf/div	4.54
Overall Height	9.76" (248 mm)
Approx Weight	17.4 lbs.(7.9 kg)

## Spares/Consumables



### Spare Dial Indicator for Load Rings

Code: 78-5461



## Constant Temperature Bath 0 to 99.9 Deg.C X 0.1 Deg.C with Led Display and False Base Support.

Code: [24-4865/01](#)

Product Group: [Constant Temperature Bath](#)

This compact, bench-top stirrer is used for dispersing soil samples in water for hydrometer analysis. The stirrer is supplied complete with Mixing Paddle and Dispersion Cup. Weight 4 kg.

## Further Information

Specially designed for the sedimentation testing of soils and other fine grained material, the bath is supplied with a false bottom to assist in circulation of the bath liquid. Will accommodate six Sedimentation Cylinders.

## Specification

Dimensions (l x w x h)	535 x 210 x 610 mm external
Capacity	Holds up to 6 sedimentation cylinders
Construction	Stainless steel with toughened glass front
Temperature Control	Heater/thermostat/circulation with digital controller unit
Power	1500 watts
Weight kg	12



## Constant Head Permeability Cell 75mm Diameter Specimen.

Code: [25-0580](#)

Product Group: [Constant Head Apparatus](#)

75 mm Diameter

## Standards

BS 1377, EN 1997-2, ASTM D2434, AASHTO T215

## Specification

Nominal Cell inside diameter	75 mm
Cell wall	Transparent plastic
Take-off points	3
End plates	Anodised aluminium
Weight kg	2.6



## Digital Tritest 50

Code: 25-3518/01

Product Group: Digital Tritest 50 Load Frame, Load Frames

- Microprocessor control
- Large on-board LED screen display
- Direct entry via a touch sensitive keyboard
- Rapid approach and return to datum of platen
- Fully variable speed, 0.00001 to 9.99999 mm/min
- Samples up to 100 mm diameter

This 50 kN capacity machine, designed primarily for triaxial testing of soil specimens up to 100 mm diameter x 200 mm long, comprises a rigid twin column construction with an integral fully variable microprocessor controlled drive unit and LCD display with a touch sensitive keyboard. The machine is normally bench mounted for ease of installation and operation.

The use of a microprocessor controlled drive system and keyboard entry provides the Digital Tritest 50 with a wide variety of features which include pause and speed reset during test, RS 232C, operator programming of speed and control functions, self test diagnostics and many other features.

A robustly constructed steel case houses the motor drive system with careful attention being given to the prevention of ingress of water or grit. All operating controls are mounted on the front panel of the machine, which is angled and recessed to prevent physical and environmental damage.

## Standards

BS 1377-7, BS 1377-8, BS 1924-2, ASTM D1883, ASTM D2166, ASTM D2850, ASTM D4767, ASTM D7181, AASHTO T99, AASHTO T134, AASHTO T135, AASHTO T136, AASHTO T180, AASHTO T193, AASHTO T208, AASHTO T296, AASHTO T297

## Further Information

Complete with RS 232C interface.

## Specification

Dimensions (l x w x h)	500 x 500 x 1470 mm
Max vertical clearance	910 mm
Horizontal clearance	364 mm
Platen diameter	133 mm
Platen travel	100 mm
Platen speed range	0.00001 to 9.99999 mm/min

# Product Sheet

www.ele.com  
+44 (0) 01525 249 200



Rapid approach speed	25 mm/minute
Weight kg	140
Capacity	12 ,200 lbf. (50 kN).
Speed Range	English mode: 0.000001 to 0.399999 in/min. Metric mode: 0.00001 to 9.99999 mm/min.
Rapid Approach Speed	2.0 in/min. (50 mm/min.).
Platen Travel	3.9" (100 mm); limit switch protection.
Vertical Clearance	36 .8" (910 mm) maximum; 12 " (305 mm) minimum.
Horizontal Clearance	15 .3" (364 mm).
Serial Interface	RS232 C; programmable baud rate and protocol.
Overall Dimensions	19.7" w. x 19.7" d. x 57.8" h. (500 x 500 x 1,470 mm).
Weight	Net 220 lbs. (100 kg); Shpg. 300 lbs. (136 kg).



## Bladder-Type Air/Water Pressure Assembly. 1000 Kpa Maximum Working Pressure.

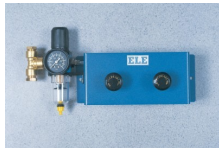
Code: 26-1746

Product Group: [Air/Water Pressure Systems - up to 1000 kPa](#)

With transparent plastic chamber for operating continuously at pressures up to 1000 kPa. A length of tubing is provided for connecting the air/water cylinder outlet to a pressure measuring system.

- Used to supply hydraulic pressure from a pneumatic pressure source.
- Prevents air entering the hydraulic pressure system.
- Maximum working pressure 1000kpa.
- Supplied with connectors and tubing for fitting to pressure measuring systems.

## Spares/Consumables



## Pneumatic Pressure Reducing Panel. Provides Two Independent Pressure Outlets 1000 Kpa Max.

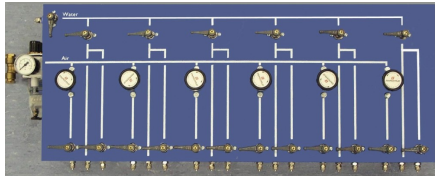
Code: 26-1760



## Replacement Bladder Wide Neck (38mm Id)

Code: 26-1746/10



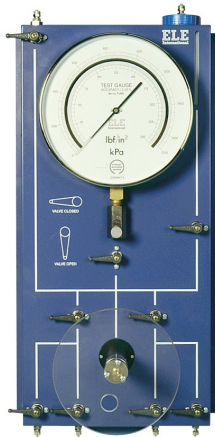


## Six-Way Pneumatic Pressure Control Panel.

Code: 26-1872

Product Group: Air/Water Pressure Systems - up to 1000 kPa

The six-way pressure control systems have been designed specifically for the monitoring of up to six independent pressures. They are particularly useful for setting up and controlling a 3-cell effective stress system using three independent back pressures. The panel is used in conjunction with the Universal Pump and Pressure Indicating Panel which provides pressure monitoring and facilities for filling and de-airing the system. Comprising six pneumatic control valves mounted in a housing for controlling six independent outlets. Supplied with connection ports for coupling panel to EL26-1880. Maximum inlet pressure 1400 kPa maximum outlet pressure 1000 kPa.



## Universal Pump and Pressure Indicating Panel 1700Kpa.

Code: [26-1880](#)

Product Group: [Modular Pressure Panel System](#)

This is the main pressure display in the system for monitoring various pressures and also provides fine control of the pressure within the system using the rotary hand pump. The unit is fitted with a dual calibrated 250 mm diameter pressure gauge, four inlet/outlet no-volume change valves, screw controlled rotary hand pump, water reservoir and isolating valves. The unit is housed in a hinged case for wall or bench mounting. By using an isolating valve the panel may be used to monitor cell or back pressure. 1700 kPa and 250 lbf/in<sup>2</sup>.

## Spares/Consumables



### Pressure Gauge 1700Kpa (250Psi) 250mm Diameter.

Code: [26-1865/10](#)



## 70mm Triaxial Cell 1700Kpa with 5 Pressure/ Drainage Ports. Supplied with Two Valves.

Code: [25-4117](#)

Product Group: [Triaxial Cell](#), [Triaxial Cells](#)

- Working pressure up to 1700 kPa
- All round visibility
- Sample sizes 38 to 100 mm diameter
- Rapid assembly and dismantling
- Accepts a range of interchangeable submersible load transducers

This range of precision made triaxial cells has been designed to meet the requirements of the modern soils laboratory. The cells have been treated to minimise corrosion. Particular attention has been paid to the quality of finish between the piston and the head. Final assembly includes the fitting of an O-ring seal and the use of special lubricant to reduce friction to a minimum and eliminate water leakage.

The piston load capacity is designed to accept high horizontal forces which may be present during the final stages of a test. Each cell has five take-off positions drilled in the base for top drainage/back pressure, pore water pressure and bottom drainage. Two no-volume change valves and an anvil for strain gauge/transducer datum are supplied for fitting to the cell.

A feature of these cells is that they all accept a single diameter piston. The internal height is such that a range of submersible load transducers can be fitted without any modification. Each cell will accept a range of base adaptors and various accessories for testing a wide range of specimens

## Standards

BS 1377, ASTM D2850, ASTM D4767, ASTM D7181, AASHTO T296, AASHTO T297

## Specification

Cell size	70 mm
Max specimen size	70 x 140 mm
Working pressure	1701 kPa
Max piston load	46 kN
Vertical clearance required	430 mm
Horizontal clearance required	180 mm
Weight kg	7.3
Maximum Working Pressure	25 0 psi (1,700 kPa).
Maximum Piston Load	10,100 lbf. (45 kN).

# Product Sheet

[www.ele.com](http://www.ele.com)  
+44 (0) 01525 249 200



Maximum Specimen Size	2.8" (70 mm) diam. x 5.6" (140 mm) l.
Required Clearance	17" (430 mm) vertical; 7.1" (180 mm) horizontal.
Weights	Net 16 lbs. (7.3 kg).



## 70mm Base Adaptor for 70mm Cells.

Code: [25-4176](#)

Product Group: [Base Pedestals](#), [Specimen Base Adaptors](#)

70mm Base Adaptor with Twin Pore Pressure Ports for 70mm Cells.

## Standards

BS 1377, ASTM D2850, ASTM D4767, ASTM D7181, AASHTO T296, AASHTO T297



## **Buoyancy Balance 6Kg X 0.1G. Supplied with Support Frame Water Tank & Suspension Hook.**

Code: [42-1000/01](#)

Product Group: [Particle Density \(specific gravity\) and Water Absorption for Coarse Aggregates](#)

The buoyancy balance system developed by ELE consists of a rigid support frame, incorporating a water tank mounted on a platform. A mechanical lifting device is used to raise the water tank through the frame height immersing the specimen suspended below the balance. The balance supplied may also be used as a standard weighing device, thus providing a versatile and comprehensive weighing system in the laboratory. 6000 g x 0.1 g supplied with frame, water tank and suspension hook.

## **Standards**

EN 1097-6, EN 12697-6, BS 812, ASTM C127, AASHTO T85

## **Further Information**

**\*\*NOT AVAILABLE FOR SALE IN THE USA\*\***

For 220 - 240 V AC, 50 - 60 Hz, 1 ph.



## Aggregate Impact Value Apparatus Complete with 16mm Dia X 600mm Long Rod

Code: 42-4000

Product Group: Aggregate Impact Value (AIV)

Heavy duty construction, heavily plated assembly ensures corrosion resistance.

### Standards

BS 812-112

### Further Information

**\*\*NOT AVAILABLE FOR SALE IN THE USA\*\***



## Standard Concrete Test Hammer

Code: [35-1480](#)

Product Group: [Concrete Test Hammer, Surface Hardness](#)

The hammer is intended for testing the quality of concrete in finished structures such as buildings and bridges. Supplied complete with carrying case and carborundum stone, the hammer is suitable for testing concrete with compressive strengths of 10 to 70 N/mm<sup>2</sup>.

## Standards

ASTM C805

## Specification

Body	Includes indicator scale, calibration curves.
Calibration Curves	Rebound number vs. compressive strength.
Rubbing Stone	Prepares test surface.
Accuracy	Within 15 %.
Carrying Case	Plastic.
Weight	Net 3 lbs. (1.4 kg).

## Spares/Consumables



### Rubbing Stone

Code: [35-1475/10](#)





## Pundit Lab Ultrasonic Concrete Tester 110-240V 50/60Hz 1Ph

Code: [35-2302/09](#)

Product Group: [Pundit Lab](#), [Pundit Lab Ultrasonic Concrete Test](#)

Pundit Lab is the most versatile Pundit to date. It has all the functions of the classic Pundit 7, but offers additional benefits.

Designed with laboratory use in mind, its compact size, rugged construction and optimized power consumption make it equally suitable for on-site use.

Along with the traditional transit time and pulse velocity measurement, Pundit Lab offers path length measurement, perpendicular crack depth measurement and surface velocity measurement.

Optimized pulse shaping gives greater transmission range at lower voltage levels. This coupled with automated combination of the transmitter voltage and the receiver gain ensures an optimum received signal level, ensuring accurate and stable measurements.

The waveform can be viewed either via an external oscilloscope connection or directly on a connected PC screen.

Full remote control capability completes the package.

Complete with two 54 kHz transducers each with 3.6 metres of cable, coupling agent, carrying case and instruction manual.

### Further Information

For 110 - 240 V AC, 50 - 60 Hz, 1 ph.

### Spares/Consumables



### Ultrasound Couplant Supplied In 250ml bottle

Code: [35-2305](#)



## Automatic/Manual 5 litre nominal capacity Mortar Mixer

Code: 39-0035/01

Product Group: Automatic/Manual 5 Litre Nominal Capacity Mortar Mixer

- New Microprocessor control
- New mix program selector
- Complies with latest EN Standards update
- Choice of automatic mixing cycles
- Sand and water dispenser supplied as standard

This mixer is designed to mix mortars and cement pastes to the requirements of the above Standards. The mixing paddle has a planetary motion and is driven by a motor with a microprocessor based speed and program controller. The mixer can be operated either in an automatic or manual mode. When the mixer is used in the manual mode, the two mixing speeds can be changed by means of a rocker switch, without switching off the motor. In the automatic mode any one of the preset mixing programs may be selected.

## Standards

EN 196-1, EN 196-3, EN 413-2, EN 459-2, EN 1744-1, EN 13279-2, EN 1015-2, EN 13395-1, EN 13454-2, ISO 679, BS 3892-1, BS 3892-3, BS 6463-103, BS 4551-1

## Further Information

**\*\*NOT AVAILABLE FOR SALE IN THE USA\*\***

Complete with bowl and paddle, sand and Water dispensers. For 220 - 240 V AC, 50 - 60 Hz, 1 ph.

## Specification

Dimensions (l x w x h)	530 x 350 x 580 mm
Speeds (rpm) Low, High	Paddle: 140 ± 5, 285 ± 10 Mixing Head: 62 ± 5, 125 ± 10
Rated Power	180 W
Bowl Capacity	5 litres approx.
Weight	54 kg

## Spares/Consumables



## Bowl

Code: [39-0031/11](#)



## Paddle

Code: [39-0031/10](#)



## Blaine Air Permeability Apparatus

Code: 38-1000

Product Group: Blaine Fineness Apparatus,  
Determination of Fineness Blaine Apparatus

## Standards

EN 196-6, EN 459-2, EN 13286-44, BS 4359-2, ASTM C204, AASHTO T153

## Specification

Cell	Stainless steel; 12.70 $\pm$ 0.10 mm i.d.
Disk	0.9 $\pm$ 0.1 mm thick with 30-40 one mm diam. holes.
Plunger	Stainless steel.
Manometer	U-tube glass with ground joint, stop cock and rubber bulb assembly.
Filter Paper	12.70 mm diam.
Fluid	Pure Mineral Oil.
Weight	Net 7 lbs. (3.2 kg).

## Spares/Consumables



## Blaine Air Permeability Cell

Code: [38-1000/15](#)



## Filter Paper

Code: [38-0652](#)



## Manometer U-tube

Code: [38-1000/10](#)



## ELE Concrete Mixer 56/40 Litre Capacity.

Code: [34-3540/01](#)

Product Group: [ELE Concrete Mixer](#)

- Portable and compact
- Tipping mechanism
- Adjustable blades
- Simple to clean and maintain

It is essential that the mixing of fresh concrete for laboratory test samples is thorough and consistent. The ELE Concrete Mixer is ideally suited for this purpose.

The mixer has been developed to give efficient mixing of both wet and dry materials. The mixing pan is removable and tilts for easy access to the pan and emptying on completion of the mixing operation. It is rotated by a turntable driven by a 1500 W, IP55 protected electric motor.

The mixer head lifts clear to provide maximum access to the pan and holds the mixing blades at a constant depth during the mixing operation. The blades are readily adjusted to suit the different types and volume of materials to be mixed.

## Further Information

**\*\*NOT AVAILABLE FOR SALE IN THE USA\*\***

220 - 240 V AC, 50 Hz, 1 ph.



## Le Chatelier Flask

Code: 38-1200

Product Group: Specific Gravity (relative density) of Hydration Cement, Le Chatelier Flask

For determining the density of hydraulic cement and lime, supplied complete with calibration certificate. Capacity 250ml. Graduated from 0 to 1ml and from 18 to 24ml graduations. Accurate to 0.05ml.

## Standards

EN 196-6, ASTM C128, ASTM C188, E 694, AASHTO T133

## Specification

Graduations

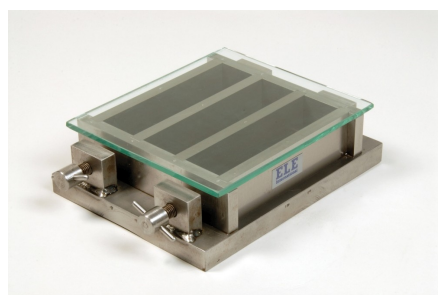
Zero mark represents 250 ml, the capacity of the large bulb; neck graduations from 0-1 ml in 0.1 ml divisions with two extra 0.1 ml graduations above the 1.0 and below the 0 marks; bulb portion of neck holds 17 ml; top portion of neck graduated from 18-24 ml in 0.1 ml divisions; 24 ml capacity.

Stopper

Ground glass.

Weight

Net 8 oz. (227 g).



## Three-gang Mould

Code: [39-1100](#)

Product Group: [Moulding of Prisms](#)

For 40.1 x 40 x 160 mm mortar prisms. This mould is manufactured to a very high specification. Supplied with glass plate.

## Further Information

**\*\*NOT AVAILABLE FOR SALE IN THE USA\*\***

## Spares/Consumables



### Glass Plate

Code: [39-1100/10](#)



### Mortar Sand

Code: [39-1170](#)





## Le Chatelier Mould

Code: 38-3005

Product Group: General Expansion of Dry Hydrated Lime by the Le Chatelier Method, Soundness of Cement Paste by the Le Chatelier Method, Soundness

Comprising a split cylinder fitted with two indicator stems. The mould is supplied complete with two glass plates and a weight 100 g  $\pm$ 10 g. Three moulds required for each test.

## Standards

BS 6463, EN 196-3, EN 459-2

## Further Information

**\*\*NOT AVAILABLE FOR SALE IN THE USA\*\***



## Vicat Frame

Code: [38-2010](#)

Product Group: [Vicat Method](#)

Complete with consistency plunger, 10 mm diameter.  
Requires one initial or final set needle to make up test weight to 300g.

## Standards

EN 196-3, EN 13454-2, ASTM C187, ASTM C191

## Further Information

**\*\*NOT AVAILABLE FOR SALE IN THE USA\*\***

## Spares/Consumables



## Consistency Plunger

Code: [38-2010/10](#)



## Flow Table

Code: [38-6000](#)

Product Group: [Flow and Workability of Mortar Lime](#)

Manufactured from cast bronze as specified in BS and ASTM C230. Complete with Tripod and Baseplate.

## Standards

BS 4551-1, BS 3892-1, ASTM C230

## Further Information

**\*\*NOT AVAILABLE FOR SALE IN THE USA\*\***