



IF IT'S WORTH BUILDING, IT'S WORTH TESTING

This wishlist was generated on 13/05/2016, and contains the following Products:

24-0410

Liquid Limit Device BS with Counter. C/W Metal Grooving Tool & Test Gauge.

24-0425

Grooving Tool and Gauge B.S.

24-0430

Glass Plate.

82-1970

Evaporating Dish - 100 x 40 mm

81-0100

Spatula 100 mm

82-1440

Burette

82-4005

Glass Stirring Rod

81-2979

Moisture Content Tin

82-2500

Wash Bottle

24-1800

Shrinkage Mould to BS 1377

24-4640

Soil Hydrometer Type 152H ASTM/Aashto Graduated -5 to + 60G/Litre.

24-4125/01

High Speed Stirrer Complete with Paddle Cup & Baffle. 220-240V 50/60Hz 1Ph.

24-9060

Proctor Mould 1/30 Ft3.

81-4230

Sample Tray - 1200 x 1160 x 50 mm

23-4250

Cbr/Core Cutter Extruder Frame and Hydraulic Jack Extrudes 150mm/6 Inch Diameter Specimens.

23-4300

Adaptor Plate for 23-4250 to Extrude 100mm/4 Inch Diameter and Marshall Specimens.

24-9198

BS Cbr Mould Body.

24-9200

BS Extension Collar

24-9204

BS Solid Base or Top Plate

24-9202

BS Perforated Base Plate.

24-9004

BS Compaction Rammer 4.5Kg Wt.

24-9002

Standard Compaction Rammer 2.5Kg BS1377-1975

24-9243

4.5Kg Annular Surcharge Weight ASTM.

24-9010

Straight Edge 300mm.

24-9228

ASTM Cbr Mould Complete with Collar & Perforated Base

24-9262

Swell Tripod

24-9275

Dial Gauge 25mm Travel X 0.01mm Divisions.

24-9186

Penetration Dial Gauge BS

24-9150/01

Cbr-Test 50 Machine 50kN Capacity BS and ASTM Supplied with Stabilising Bar.

27-1300/01

DSU Electronic Readout and Control System 220 - 240 V AC 50/60 Hz

25-0605

Falling Head Permeability Cell.

25-0580

Constant Head Permeability Cell 75mm Diameter Specimen.

25-0591

Manometer Tubes & Stand.

25-0593

Constant Level Tank.

82-0220

Beaker - 1000 ml

420-030

Paqualab Incubator 25:- Single Incubator Filtration Unit 25 Al Petri Dishes

422-010

Coliform Starter Pack. Sufficient for 200 Tests

450-017

Water Level Indicator with Audio and Light Indicator 500 m

25-3518/01

Digital Tritest 50

27-1293

Distance Piece Stainless Steel for Use with Submersible Load Cells and Axial Strain Transducers.

27-1575

Submersible Load Transducer Assembly 10kN Capacity In Compression.

27-1617

Axial Strain Transducer Assembly 50mm Travel Fitted with 5 Pin Din Plug.

27-1633

Pressure Transducer Assembly 1700Kpa Fitted with 5 Pin Din Plug.

27-1641

Volume Change Transducer Assembly 80Cm3 Capacity Maximum Working Pressure 1700Kpa

26-1880

Universal Pump and Pressure Indicating Panel 1700Kpa.

26-1800/01

Pressure Test 1700 Oil/Water Constant Pressure System 0 to 1700Kpa 220-240V 50/60Hz 1Ph.

25-1833/01

De-Aired Water Apparatus 15 Litre Capacity

26-1926

Nylon Tubing 6mm Od 3500Kpa.

27-1753

DS7.2 Undrained Triaxial Shear Strength Program for Windows 7, 32/64 bit

27-1763

DS7.2 CU/CD Triaxial Shear Strength Program for Windows 7, 32/64 bit

25-4157

100mm Triaxial Cell 1700Kpa with 5 Pressure/ Drainage Ports. Supplied with Two Valves.

25-4186

100 mm Base Adaptor for 100 mm Triaxial Cell.

25-7610

Membrane Placing Tool 100mm/4 Inch Diameter.

25-7640

Suction Membrane Device 100mm/4 Inch Diameter.

25-7650

Two-Way Split Former 100mm Diameter.

25-7590

Pressure Pad 100mm Diameter.

25-7621

Rubber Membrane 100mm/4 Inch Diameter. Pack of 10

25-7631

Membrane Sealing Ring 100mm Diameter. Pack of 10.

25-7661

Porous Disc 100mm Diameter Pack of 2.

25-7670

Filter Paper Drain 100mm/4 Inch Diameter. Pack of 50.

25-4200

Piston Restraint Clamp for Ele Triaxial Cells

25-4117

70mm Triaxial Cell 1700Kpa with 5 Pressure/ Drainage Ports. Supplied with Two Valves.

25-4176

70mm Base Adaptor for 70mm Cells.

25-4047

50mm Triaxial Cell 1700Kpa with 5 Pressure/ Drainage Ports. Supplied with Two Valves.

25-4166

38mm/1.5 Inch Base Adaptor for 50mm Cells.

25-4290

Membrane Placing Tool 35mm/38mm.

25-5100

Suction Membrane Device 38mm/1.5 Inch Diameter.

25-5120

Two-Way Split Former 38mm/1.5 Inch Diameter.

25-5130

Two Part Split Mould 38mm

25-4520

Valve No Volume Change 1/4 Inch BSp Fitted with 6 mm Connector and Integral Sealing Ring.

25-5050/10

Drainage Line for 25-4250

25-5050

Pressure Pad 38mm/1.5 Inch Diameter.

25-5061

Rubber Membrane 38mm/1.5 Inch Diameter. Pack of 10.

25-5081

Membrane Sealing Ring 38mm/1.5 Inch Diameter. Pack of 10.

25-5181

Porous Disc 38mm/1.5 Inch Diameter. Pack of 2.

25-5200

Filter Paper Drain 38mm/1.5 Inch Diameter. Pack of 50.

25-6470

Membrane Placing Tool 70mm/2.8 Inch Diameter.

25-6480

Suction Membrane Device 70mm Diameter.

25-6500

Two-Way Split Former 70mm Diameter.

25-6530

Two Part Split Mould 70mm

25-6430

Pressure Pad 70mm Diameter.

25-6441

Rubber Membrane 70mm/2.8 Inch Diameter. Pack of 10.

25-6461

Membrane Sealing Ring 70mm Diameter Pack of 10.

25-6561

Porous Disc 70mm Diameter Pack of 2.

25-6580

Filter Paper Drain 70mm/2.8 Inch Diameter. Pack of 50.



Liquid Limit Device BS with Counter. C/W Metal Grooving Tool & Test Gauge.

Code: [24-0410](#)

Product Group: [Casagrande Method](#)

With revolution counter. Complete with metal grooving tool and test gauge.

Standards

BS 1377, EN 1997-2



Grooving Tool and Gauge B.S.

Code: [24-0425](#)

Product Group: [Casagrande Method](#)

Constructed to British Standards.

Standards

BS 1377, EN 1997-2



Glass Plate.

Code: 24-0430

Product Group: Casagrande Method, Determination of Plastic Limit, Moulding of Prisms

500 mm square x 10 mm thick.

Standards

BS 1377, EN 1997-2



Evaporating Dish - 100 x 40 mm

Code: [82-1970](#)

Product Group: [Evaporating Dishes](#)

Shallow form with spout, porcelain 100 x 40 mm
nominal diameter x height.

Further Information

****NOT AVAILABLE FOR SALE IN THE USA****



Spatula 100 mm

Code: [81-0100](#)

Product Group: [Spatulas](#)

Further Information

****NOT AVAILABLE FOR SALE IN THE USA****



Burette

Code: [82-1440](#)

Product Group: [Pipettes and Burettes](#)

Soda glass with singlebore stopcock, BS EN ISO 385
Class B, 0.10 sub-divisions. 50 ml.

Further Information

****NOT AVAILABLE FOR SALE IN THE USA****



Glass Stirring Rod

Code: [82-4005](#)

Product Group: [Syringe and Stirring Rod](#)

7 mm diameter x 200 mm long. Pack of 10.

Further Information

****NOT AVAILABLE FOR SALE IN THE USA****



Moisture Content Tin

Code: [81-2979](#)

Product Group: [Moisture Content Tin and Sample Containers](#)

Further Information

****NOT AVAILABLE FOR SALE IN THE USA****



Wash Bottle

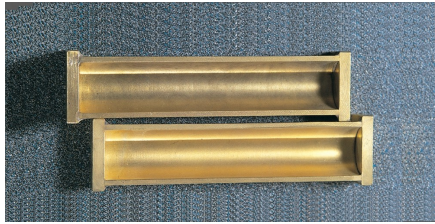
Code: [82-2500](#)

Product Group: [Bottles and Crucibles](#)

Polythene, 500 ml capacity.

Further Information

****NOT AVAILABLE FOR SALE IN THE USA****



Shrinkage Mould to BS 1377

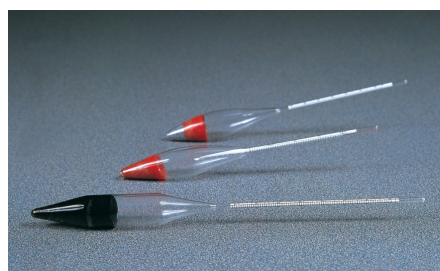
Code: [24-1800](#)

Product Group: [Linear Shrinkage](#)

To produce a specimen 140 mm long x 12.5 mm radius.

Standards

BS 1377



Soil Hydrometer Type 152H ASTM/Aashto Graduated -5 to +60G/Litre.

Code: [24-4640](#)

Product Group: [ASTM Soil Hydrometers, Soil Hydrometers](#)

Graduated -5 to +60 g/litre.

Standards

BS 1377, EN 1997-2, ASTM D422, ASTM E100, AASHTO T88

Specification

| | |
|--------------|--------------------------|
| Construction | Molded, seamless. |
| Scale | Bouyoucos; double scale. |
| Calibration | At 68°F. |
| Weight | Net 4 oz. (113 g). |



High Speed Stirrer Complete with Paddle Cup & Baffle. 220-240V 50/60Hz 1Ph.

Code: [24-4125/01](#)

Product Group: [Mechanical Analysis Stirrer](#)

Compact bench top stirrer used for dispersing soil samples in water. Supplied complete with mixing paddle and dispersion cup with baffle. Beaker position maintained by column retainer.

Standards

BS 1377, ASTM D422, AASHTO T88

Spares/Consumables



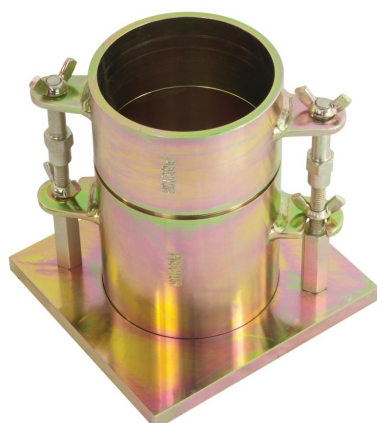
Mixing Paddle for 24-4125 Series High Speed Stirrer

Code: [24-4125/10](#)



Soil Dispersion Cup & Baffle.

Code: [24-4125/11](#)



Proctor Mould 1/30 Ft3.

Code: 24-9060

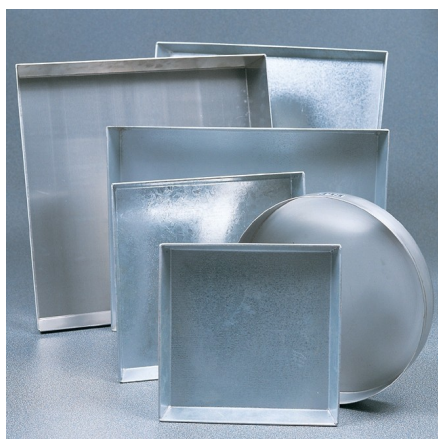
Product Group: Proctor compaction, Accessories for
ASTM and Proctor compaction

Standards

ASTM D558, ASTM D559, ASTM D560, ASTM D698, ASTM D1557, AASHTO T99, AASHTO T134,
AASHTO T135, AASHTO T136, AASHTO T180

Specification

| | |
|---------------------|--|
| Dimensions | 101.6 mm dia x 116.4 mm high |
| Rammer Mould Volume | 1/30 ft ³ |
| Construction | All steel, threaded studs with wing nuts, plated. |
| Weight | 5.4 kg |



Sample Tray - 1200 x 1160 x 50 mm

Code: [81-4230](#)

Product Group: [Sample Trays](#)

Further Information

****NOT AVAILABLE FOR SALE IN THE USA****



Cbr/Core Cutter Extruder Frame and Hydraulic Jack Extrudes 150mm/6 Inch Diameter Specimens.

Code: [23-4250](#)

Product Group: [Soil Extruders](#)

Comprises a frame and hydraulic jack with adaptor plate supplied. Extrudes samples from BS CBR Mould and ASTM CBR Mould.

Standards

BS 1377-1



Adaptor Plate for 23-4250 to Extrude 100mm/4 Inch Diameter and Marshall Specimens.

Code: [23-4300](#)

Product Group: [Soil Extruders](#)

For use with 23-4250. Comprising an adaptor plate, retaining screws and a nominal 100 mm ram plunger. Enables extrusion from all ELE 100 mm moulds and core cutters listed in the table.

Standards

BS 1377-1

Further Information

Two extruders comprising a frame and hydraulic jack supplied with adaptor plates to enable a range of sample extrusion from all ELE moulds indicated in the table.



BS Cbr Mould Body.

Code: [24-9198](#)

Product Group: [Accessories for BS compaction and CBR, BS EN CBR mould and accessories](#)

Standards

BS 1377, BS 1924, EN 13286-4, EN 1997-2

Specification

| | |
|--------------|---|
| Mould | 152 x 127 mm (inside diameter x height) |
| Collar | 51 mm height, fits both ends of mould |
| Base plate | Solid, fits both ends of mould |
| Construction | All steel, plated |
| Weight kg | 7.3 |



BS Extension Collar

Code: [24-9200](#)

Product Group: [Accessories for BS compaction and CBR, BS EN CBR mould and accessories](#)

Standards

BS 1377, BS 1924, EN 13286-4, EN 1997-2



BS Solid Base or Top Plate

Code: [24-9204](#)

Product Group: [Accessories for BS compaction and CBR, BS EN CBR mould and accessories](#)

Standards

BS 1377, BS 1924, EN 13286-4, EN 1997-2



BS Perforated Base Plate.

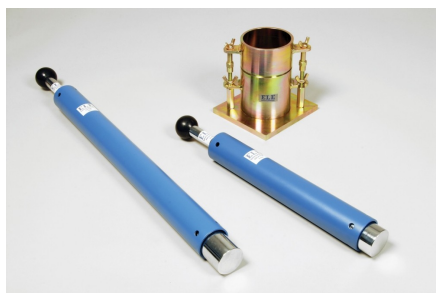
Code: [24-9202](#)

Product Group: [BS EN CBR mould and accessories](#)

To fit mould body

Standards

BS 1377, BS 1924, EN 13286-4, EN 1997-2



BS Compaction Rammer 4.5Kg Wt.

Code: [24-9004](#)

Product Group: [BS/EN compaction test 4.5kg](#)

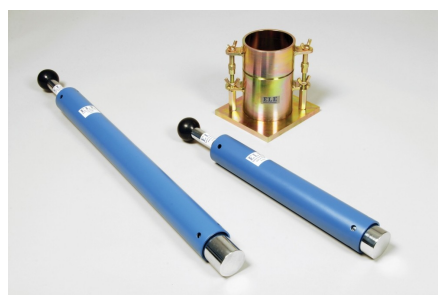
50mm diameter with 450mm drop, manufactured from corrosion protected steel.

Standards

BS 1377-4, BS 1924-2, EN 1997-2

Specification

| | |
|--------------|---|
| Rammer | 50 mm dia, 4.5 kg |
| Drop | 450 mm |
| Guide Sleeve | Machined steel tubing with air pressure release holes |
| Finish | Corrosion resistant |
| Weight kg | 7.5 |



Standard Compaction Rammer 2.5Kg BS1377-1975

Code: [24-9002](#)

Product Group: [BS/EN compaction test 2.5kg](#)

50mm diameter with 300mm drop, manufactured from corrosion protected steel.

Standards

BS 1377-4, BS 1924-2, EN 1997-2

Specification

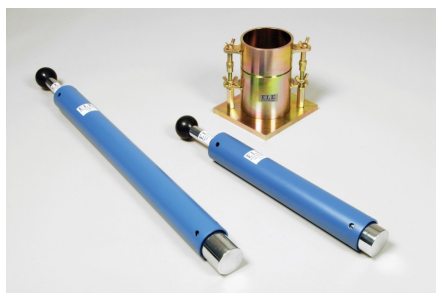
| | |
|--------------|---|
| Rammer | 50 mm dia, 2.5 kg |
| Drop | 300 mm |
| Guide Sleeve | Machined steel tubing with air pressure release holes |
| Finish | Corrosion resistant |
| Weight kg | 4.2 |



4.5Kg Annular Surcharge Weight ASTM.

Code: [24-9243](#)

Product Group: [ASTM/AASHTO CBR mould and accessories](#)



Straight Edge 300mm.

Code: 24-9010

Product Group: Straightedge, BS/EN compaction test
4.5kg, Proctor compaction

300 mm

Standards

BS 1377-4, BS 1924-2, EN 1997-2, ASTM D698, ASTM D1557, AASHTO T99

Specification

Construction

Flat ground tool steel; beveled edge.

Dimensions

12" l. x 1-1/4" w. x 1/8" thick (305 x 32 x 3 mm).

Weight

Net 9 oz. (255 g).



ASTM Cbr Mould Complete with Collar & Perforated Base

Code: [24-9228](#)

Product Group: [ASTM/AASHTO CBR mould and accessories](#)

With collar and perforated baseplate.

Standards

ASTM D1883, AASHTO T193

Specification

| | |
|--------------|---|
| Mould | 152.4 x 177.8 mm (inside diameter x height) |
| Collar | 50.8 mm height, fits both ends of mould |
| Base plate | Perforated |
| Construction | All steel, plated |
| Weight kg | 9 |



Swell Tripod

Code: [24-9262](#)

Product Group: [Expansion \(swell\) Test Equipment, Tripod Attachment](#)

For mounting Swell Dial Gauge in position on CBR mould collar.

Standards

ASTM D1883, AASHTO T193

Further Information

Requires dial indicator; not included, order separately

Specification

| | |
|--------------|---|
| Construction | Machined, one-piece cast aluminum. |
| Contact Head | Integral part of ssembly; holds dial indicator. |
| Construction | 2" I. (50.8 mm) included. |
| Weight | Net 1 lb. (0.4 kg). |

Spares/Consumables



Dial Indicator - 1.0" Range

Code: [88-4100](#)



Dial Gauge 25mm Travel X 0.01mm Divisions.

Code: [24-9275](#)

Product Group: [Expansion \(swell\) Test Equipment](#)

25 mm travel x 0.01 mm.



Penetration Dial Gauge BS

Code: [24-9186](#)

Product Group: [In-situ CBR](#), [Conversion of In-situ to Laboratory CBR](#), [Penetration and measurement](#)

Complete with rack extensions and chisel edge anvil. 25 mm travel x 0.01 mm divisions.



Cbr-Test 50 Machine 50kN Capacity BS and ASTM Supplied with Stabilising Bar.

Code: [24-9150/01](#)

Product Group: [Load frames](#)

- Single speed machine (BS/EN and ASTM)
- Rapid platen adjustment
- Complete with stabilising bar
- Compact, bench-mounting design
- Options for mechanical or electronic measurement

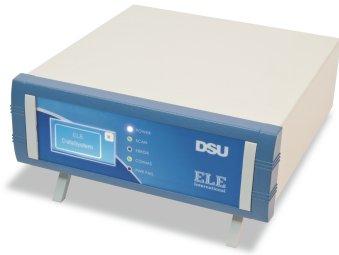
Designed for performing laboratory CBR tests to BS 1377, EN13286-47 and ASTM D1883, this bench mounting machine comprises a twin column frame incorporating a motorised drive system. Rapid adjustment of the platen is provided, which enables daylight to be taken up quickly and also close control of application of a seating load.

Standards

BS 1377, BS 1924, EN 13286-47, ASTM D1883, AASHTO T193

Specification

| | |
|------------------------|---------------------|
| Dimensions (l x w x h) | 550 x 400 x 1220 mm |
| Max vertical clearance | 800 mm |
| Horizontal clearance | 255 mm |
| Platen diameter | 133 mm |
| Platen travel | 105 mm |
| Weight kg | 80 |



DSU Electronic Readout and Control System 220 - 240 V AC 50/60 Hz

Code: [27-1300/01](#)

Product Group: [Electronic Instrumentation, Data Logging with the DSU, Data Logging with the DSU](#)

- Download the full brochure here [\[../../../../Page/the-new-dsu\]](#)
- 4 channel automatic control and data-logging unit
- Automatic, dual-frame control
- Performs CBR, Marshall, Unconfined Compression, Direct and Residual Shear, One-Dimensional Consolidation, Unconfined Undrained, Consolidated Drained and Unconsolidated Drained tests
- LAN connection - software can be running anywhere on your server
- Never lose data from power fails - 2 gigabytes of non-volatile memory
- Extended warranty

The Data System Unit (DSU) is a versatile instrument designed to accommodate the general logging requirements of geotechnical and materials testing engineers. Its intelligent interface allows the user to work with a range of different sensors.

Further Information

Become a member of the ELE International web site, add this new product to a wishlist to receive a quote! Click here [\[../../../../Login\]](#)

Please note that this product is not yet available in the USA, we will let you know as soon as it is ready!



Falling Head Permeability Cell.

Code: [25-0605](#)

Product Group: [Falling Head Apparatus](#)

Specification

| | |
|-----------|---|
| Cell | Plated seamless tube 100 mm diameter x 130 mm height |
| Base | Porous plate with three tie rods |
| Top plate | Machined to accept smaller tubes |
| Weight kg | 3.4 |



Constant Head Permeability Cell 75mm Diameter Specimen.

Code: [25-0580](#)

Product Group: [Constant Head Apparatus](#)

75 mm Diameter

Standards

BS 1377, EN 1997-2, ASTM D2434, AASHTO T215

Specification

| | |
|------------------------------|---------------------|
| Nominal Cell inside diameter | 75 mm |
| Cell wall | Transparent plastic |
| Take-off points | 3 |
| End plates | Anodised aluminium |
| Weight kg | 2.6 |



Manometer Tubes & Stand.

Code: [25-0591](#)

Product Group: [Constant Head Apparatus](#)

Comprising three glass tubes of constant bore, metre scale and connecting tubing for cell pressure take-off points, all mounted on a free-standing panel. Comprising three glass tubes of constant bore, metre scale and connecting tubing for cell pressure take-off points, all mounted on a free-standing panel.

Standards

BS 1377, EN 1997-2, ASTM D2434, AASHTO T215



Constant Level Tank.

Code: [25-0593](#)

Product Group: [Constant Head Apparatus](#)

Manufactured from transparent plastic with attachment for wall mounting. The inlet, outlet and overflow pipes are fitted to the base of the tank and can be adjusted for height within the tank. Supplied complete with connecting tubing.

Standards

BS 1377, EN 1997-2, ASTM D2434, AASHTO T215



Beaker - 1000 ml

Code: [82-0220](#)

Product Group: [Beakers and Covers](#)

Borosilicate glass, squat form.

Further Information

****NOT AVAILABLE FOR SALE IN THE USA****



Paqualab Incubator 25:- Single Incubator Filtration Unit 25 AI Petri Dishes

Code: [420-030](#)

Product Group: [Paqualab Portable Incubators & Filtration Unit](#)

The ELE Paqualab 25 includes a universal incubator with 2 pre-set temperatures (normally 37°C and 44°C), a membrane filtration kit, connecting cables and operating manual. All components are housed in a convenient rigid carrying case which can also accommodate a number of electronic meters from the ELE Paqualab range.

Further Information

The system will operate on 12 V or 24 V DC, 110 V or 240 V AC, or the internal 12 V rechargeable battery supplied.

Spares/Consumables



Filtration Unit AI Construction Complete with Sampling Cup.

Code: [420-450](#)



Coliform Starter Pack. Sufficient for 200 Tests

Code: [422-010](#)

Product Group: [Microbiological starter packs and consumables](#)

Sufficient for 200 tests. Comprising 200 grid membranes and absorbent pads, one pad dispenser and 38.1 grmas membrane Lauryl Sulphate broth.

Spares/Consumables



Membrane Lauryl Sulphate Medium 38.1 Gram Pack. Sufficient for 200 Tests.

Code: [422-110](#)



Pad Dispenser.

Code: [422-515](#)



Sterile Filter Membranes and ABSorbent Pads. Pack of 200.

Code: [422-508](#)



Water Level Indicator with Audio and Light Indicator 500 m

Code: [450-017](#)

Product Group: [Water level indicators](#)

Fitted with 500m Tape

Further Information

Graduated Every 10 mm.



Digital Tritest 50

Code: 25-3518/01

Product Group: Digital Tritest 50 Load Frame, Load Frames

- Microprocessor control
- Large on-board LED screen display
- Direct entry via a touch sensitive keyboard
- Rapid approach and return to datum of platen
- Fully variable speed, 0.00001 to 9.99999 mm/min
- Samples up to 100 mm diameter

This 50 kN capacity machine, designed primarily for triaxial testing of soil specimens up to 100 mm diameter x 200 mm long, comprises a rigid twin column construction with an integral fully variable microprocessor controlled drive unit and LCD display with a touch sensitive keyboard. The machine is normally bench mounted for ease of installation and operation.

The use of a microprocessor controlled drive system and keyboard entry provides the Digital Tritest 50 with a wide variety of features which include pause and speed reset during test, RS 232C, operator programming of speed and control functions, self test diagnostics and many other features.

A robustly constructed steel case houses the motor drive system with careful attention being given to the prevention of ingress of water or grit. All operating controls are mounted on the front panel of the machine, which is angled and recessed to prevent physical and environmental damage.

Standards

BS 1377-7, BS 1377-8, BS 1924-2, ASTM D1883, ASTM D2166, ASTM D2850, ASTM D4767, ASTM D7181, AASHTO T99, AASHTO T134, AASHTO T135, AASHTO T136, AASHTO T180, AASHTO T193, AASHTO T208, AASHTO T296, AASHTO T297

Further Information

Complete with RS 232C interface.

Specification

| | |
|------------------------|---------------------------|
| Dimensions (l x w x h) | 500 x 500 x 1470 mm |
| Max vertical clearance | 910 mm |
| Horizontal clearance | 364 mm |
| Platen diameter | 133 mm |
| Platen travel | 100 mm |
| Platen speed range | 0.00001 to 9.99999 mm/min |

Product Sheet

www.ele.com
+44 (0) 01525 249 200



| | |
|----------------------|---|
| Rapid approach speed | 25 mm/minute |
| Weight kg | 140 |
| Capacity | 12 ,200 lbf. (50 kN). |
| Speed Range | English mode: 0.000001 to 0.399999 in/min. Metric mode: 0.00001 to 9.99999 mm/min. |
| Rapid Approach Speed | 2.0 in/min. (50 mm/min.). |
| Platen Travel | 3.9" (100 mm); limit switch protection. |
| Vertical Clearance | 36 .8" (910 mm) maximum; 12 " (305 mm) minimum. |
| Horizontal Clearance | 15 .3" (364 mm). |
| Serial Interface | RS232 C; programmable baud rate and protocol. |
| Overall Dimensions | 19.7" w. x 19.7" d. x 57.8" h. (500 x 500 x 1,470 mm). |
| Weight | Net 220 lbs. (100 kg); Shpg. 300 lbs. (136 kg). |



Distance Piece Stainless Steel for Use with Submersible Load Cells and Axial Strain Transducers.

Code: [27-1293](#)

Product Group: [Submersible Load Transducers](#), [Load Measurement](#), [Load Measurement](#)

Required when using submersible load cells.



Submersible Load Transducer Assembly 10kN Capacity In Compression.

Code: [27-1575](#)

Product Group: [Load Measurement, Load Measurement](#)

- Eliminates effects of piston friction on readings
- Unaffected by cell confining pressures
- Easily installed in triaxial cell
- Supplied complete with calibration certificate and 5-pin DIN type connector for use with GDU

Submersible Load Transducers are used to measure accurately the axial loads applied to triaxial test specimens. Consisting of a load cell and piston assembly these units replace the standard triaxial cell loading piston. A major advantage is that these transducers measure loads directly on top of the specimen. All transducers are supplied complete with a 5-pin DIN type connector and calibration certificate.

Specification

| | |
|-------------------------------|---|
| Dimensions | 76 x 50 mm (dia x h) excluding piston and adaptor |
| Overload capacity | 150% |
| Output | 27 mv full range |
| Excitation | 11 V DC (15 V DC max) |
| Non-linearity | 0.1% maximum |
| Hysteresis Deflection | 0.1% maximum 0.05 mm at full load |
| Side force | 50% full scale maximum without effect |
| Connector | 5-pin DIN plug |
| Compensated temperature range | 1 to 50°C |
| Weight g | 850 |



Axial Strain Transducer Assembly 50mm Travel Fitted with 5 Pin Din Plug.

Code: [27-1617](#)

Product Group: [Axial Displacement](#), [Axial Displacement](#), [Displacement Transducers](#)

0 to 50 mm range. For use with Triaxial Cells.

- Ideally suited for use with GDU for accurate displacement measurements
- Models available for use in consolidation, shear, CBR and triaxial test applications
- Supplied complete with mounting hardware for specified products

Displacement Transducers are used in consolidation, shear, CBR and triaxial test applications for accurate displacement measurements. They are supplied complete with a 5-pin DIN type connector for direct connection to the GDU.

Specification

| | |
|------------------|---|
| Construction | Fully encapsulated electronics, sealed in a stainless steel case |
| Excitation | 10 V DC |
| Connector | 5-pin DIN type |
| Mounting bracket | Included as standard |
| Weight kg | 0.45 |
| Construction | Fully encapsulated electronics, sealed in a stainless steel case. |
| Excitation | 10vDC. |
| Connector | 5-Pin DIN type. |
| Mounting Bracket | Included as standard. |
| Weight | Net 1 lb. (0.45 kg). |



**Pressure Transducer Assembly 1700Kpa
Fitted with 5 Pin Din Plug.**

Code: 27-1633

Product Group: [Pressure Transducer](#), [Pressure Measurement](#), [Tri-Flex 2 One-Cell Permeability Test System](#)

Pressure Transducers are used to measure the cell, pore and back pressures during triaxial testing. Assemblies are supplied complete with a de-airing block, valve, 5-pin DIN plug connector and calibration certificate

Specification

| | |
|--------------|-------------------|
| Construction | Stainless steel |
| Excitation | 10 V DC |
| Output | 143 mV full range |
| Thread | 1/4" BSP |
| Construction | Stainless Steel. |
| Excitation | 10vDC. |
| Thread | 1/4 BSP. |
| Construction | Stainless Steel. |
| Excitation | 10vDC. |
| Thread | 1/4 BSP. |



Volume Change Transducer Assembly 80Cm3 Capacity Maximum Working Pressure 1700Kpa

Code: 27-1641

Product Group: [Volume Change Measurement](#),
[Volume Change Measurement](#), [Volume Change Transducer](#), [Tri-Flex 2 One-Cell Permeability Test System](#)

- Reversing valves to increase capacity
- Steel case for wall mounting and access to piping
- Supplied complete with calibration certificate

The Volume Change Transducer provides continuous measurements of volume change during the triaxial test. The assembly includes a valve to reverse the flow through the unit, providing increased capacity.

Specification

| | |
|--------------------------------|---|
| Overall dimensions (l x w x h) | 178 x 229 x 368 mm |
| Maximum pressure | 1700 kPa |
| Excitation | 10 V DC |
| Output | 1.25 full range |
| Capacity | 80 ml |
| Connector | 5-pin DIN type |
| Weight kg | 4.5 |
| Maximum Pressure | 250 psi (1,700 kPa). |
| Excitation | 10vDC. |
| Output | 1.25 Volts full range. |
| Capacity | 80 cc x 0.1 cc sensitivity. |
| Case | Steel; hinged for access to piping. |
| Connector | 5-Pin DIN type. |
| Overall Dimensions | 9" w. x 7" d. x 14 -1/2" h. (229 x 178 x 368 mm). |
| Weight | Net 10 lbs. (4.5 kg). |
| Maximum Pressure | 250 psi (1,700 kPa). |
| Excitation | 10vDC. |
| Output | 1.25 Volts full range. |
| Capacity | 80 cc x 0.1 cc sensitivity. |
| Case | Steel; hinged for access to piping. |
| Connector | 5-Pin DIN type. |
| Overall Dimensions | 9" w. x 7" d. x 14 -1/2" h. (229 |

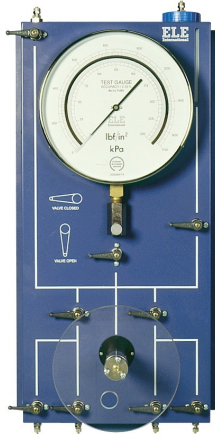
Product Sheet

www.ele.com
+44 (0) 01525 249 200



Weight

x 178 x 368 mm).
Net 10 lbs. (4.5 kg).



Universal Pump and Pressure Indicating Panel 1700Kpa.

Code: [26-1880](#)

Product Group: [Modular Pressure Panel System](#)

This is the main pressure display in the system for monitoring various pressures and also provides fine control of the pressure within the system using the rotary hand pump. The unit is fitted with a dual calibrated 250 mm diameter pressure gauge, four inlet/outlet no-volume change valves, screw controlled rotary hand pump, water reservoir and isolating valves. The unit is housed in a hinged case for wall or bench mounting. By using an isolating valve the panel may be used to monitor cell or back pressure. 1700 kPa and 250 lbf/in².

Spares/Consumables



Pressure Gauge 1700Kpa (250Psi) 250mm Diameter.

Code: [26-1865/10](#)



Pressure Test 1700 Oil/Water Constant Pressure System 0 to 1700Kpa 220-240V 50/60Hz 1Ph.

Code: 26-1800/01

Product Group: Oil/Water Constant Pressure System, Air/Water Pressure Systems - up to 1000 kPa

- 0 to 1700 kPa (250 lbf/in²) fully variable
- Continuous constant pressure control
- One litre capacity

The ELE oil/water constant pressure system , PressureTest 1700, is extremely versatile and can be used in conjunction of with a wide range of test equipment. The unit provides continuous variable pressure up to 1700 kPa. Pressure is increased or decreased simply by turning a control wheel.

The apparatus is supplied without a gauge for those customers who have suitable pressure monitoring equipment. A digital pressure gauge is offered as an accessory. The machine features a clear hydraulic/water interface reservoir and up to one litre capacity of water is available under pressure. • 0 to 1700 kPa (250 lbf/in²) fully variable.

Further Information

Dimensions (without gauge) 240 x 400 x 500 mm (l x w x h).

Spares/Consumables



Oil 5 Litres T46

Code: 26-1805

De-Aired Water Apparatus 15 Litre Capacity

Code: [25-1833/01](#)

Product Group: [De-Aired Water](#)



This compact self-contained unit will de-air water quickly and efficiently down to levels of dissolved oxygen acceptable for geotechnical test methods. Air is removed from the water by a vacuum system, which continuously circulates the water in the tank. The unit is supplied with a clear water container, which will hold a maximum of 15 litres of water. Input and output lines are formed using standard 6 mm tube connectors.



Nylon Tubing 6mm Od 3500Kpa.

Code: [26-1926](#)

Product Group: [Volume Change Measurement,](#)
[Permeability of Rock](#)

6 mm outside diameter x 4 mm inside diameter. For use up to a pressure of 3500 kPa. Priced per metre.



DS7.2 Undrained Triaxial Shear Strength Program for Windows 7, 32/64 bit

Code: 27-1753

Product Group: DS7, DS7.2 Quick Undrained Triaxial Software, Automatic Data Acquisition

- Options for single or multi-stage testing on a sample
- Mohr circles produced for graphical analysis

Options are available for a single test on one sample, standard three-sample procedure with linking of the results, or for a multi-stage test on one sample. Load and strain are monitored through transducers. Various printouts and graphical plots are available including basic sample data, moisture content and density. The program tabulates shearing data and plots stress against strain. Mohr circles are produced for graphical analyses.



DS7.2 CU/CD Triaxial Shear Strength Program for Windows 7, 32/64 bit

Code: [27-1763](#)

Product Group: [DS7, DS7.2 CU/CD Effective Stress Triaxial Software](#)

- Complete package for consolidated drained and consolidated undrained triaxial tests

This advanced package includes procedures for consolidated drained and consolidated undrained tests. Standard options are available for saturation, consolidation and shearing with automatic monitoring of the various parameters through transducers linked to the system. Load, strain, volume-change, pore-pressure, cell pressure and back pressure can all be monitored. Various prints and graphical plots are available to the engineer and include saturation data such as pore pressure build-up and B values, consolidation, volume change against time, shearing load versus strain with pore pressure monitoring.



100mm Triaxial Cell 1700Kpa with 5 Pressure/ Drainage Ports. Supplied with Two Valves.

Code: [25-4157](#)

Product Group: [Triaxial Cell](#), [Triaxial Cells](#)

- Working pressure up to 1700 kPa
- All round visibility
- Sample sizes 38 to 100 mm diameter
- Rapid assembly and dismantling
- Accepts a range of interchangeable submersible load transducers

This range of precision made triaxial cells has been designed to meet the requirements of the modern soils laboratory. The cells have been treated to minimise corrosion. Particular attention has been paid to the quality of finish between the piston and the head. Final assembly includes the fitting of an O-ring seal and the use of special lubricant to reduce friction to a minimum and eliminate water leakage.

The piston load capacity is designed to accept high horizontal forces which may be present during the final stages of a test. Each cell has five take-off positions drilled in the base for top drainage/back pressure, pore water pressure and bottom drainage. Two no-volume change valves and an anvil for strain gauge/transducer datum are supplied for fitting to the cell.

A feature of these cells is that they all accept a single diameter piston. The internal height is such that a range of submersible load transducers can be fitted without any modification. Each cell will accept a range of base adaptors and various accessories for testing a wide range of specimens

Standards

BS 1377, ASTM D2850, ASTM D4767, AASHTO T296, AASHTO T297



100 mm Base Adaptor for 100 mm Triaxial Cell.

Code: [25-4186](#)

Product Group: [Base Pedestals, Specimen Base Adaptors](#)

100 mm Base Adaptor with Twin Pore Pressure Ports for 100 mm Triaxial Cell.

Standards

BS 1377, ASTM D2850, ASTM D4767, AASHTO T296, AASHTO T297



Membrane Placing Tool 100mm/4 Inch Diameter.

Code: [25-7610](#)

Product Group: [Membrane Placing Tools, O-Ring Placing Tools](#)

100Mm/4 Inch Diameter Membrane Placing Tool.

Standards

ASTM D2850, ASTM D4767, ASTM D7181, AASHTO T296, AASHTO T297



Suction Membrane Device 100mm/4 Inch Diameter.

Code: [25-7640](#)

Product Group: [Suction Membrane Devices](#), [Suction Membrane Device](#)

100Mm/4 Inch Diameter Suction Membrane Device.



Two-Way Split Former 100mm Diameter.

Code: [25-7650](#)

Product Group: [Two-way Split Formers](#), [Two-Way Split Formers](#)

Pressure Pad 100mm Diameter.

Code: [25-7590](#)

Product Group: [Specimen Caps, Pressure Pads](#)

100 mm diameter pressure pad. The pad shall have two empty ports and will come complete with two blanking plugs, plastic tubing and connector. Suitable For both drained and undrained tests.



Standards

ASTM D2850, ASTM D4767, ASTM D7181, AASHTO T296, AASHTO T297



Rubber Membrane 100mm/4 Inch Diameter. Pack of 10

Code: [25-7621](#)

Product Group: [Rubber Membranes](#), [Rubber Membranes](#), [Tri-Flex 2 Permeability Test Cell](#)

100 mm/4 Inch diameter rubber membrane (pack of 10).

Standards

ASTM D2850, ASTM D4767, ASTM D5084, AASHTO T296, AASHTO T297, ASTM D7181



Membrane Sealing Ring 100mm Diameter. Pack of 10.

Code: [25-7631](#)

Product Group: [Membrane Sealing Rings](#), [Sealing Rings](#), [Tri-Flex 2 Permeability Test Cell](#)

100 mm diameter membrane sealing ring (Pack Of 10).

Standards

ASTM D2850, ASTM D4767, ASTM D5084, AASHTO T296, AASHTO T297



Porous Disc 100mm Diameter Pack of 2.

Code: [25-7661](#)

Product Group: [Accessories for CU/CU effective stress, Tri-Flex 2 Permeability Test Cell, Porous Stones](#)

100 mm diameter porous disc (Pack Of 2).

Standards

ASTM D2850, ASTM D4767, ASTM D5084, AASHTO T296, AASHTO T297, ASTM D7181



Filter Paper Drain 100mm/4 Inch Diameter. Pack of 50.

Code: [25-7670](#)

Product Group: [Filter Paper Drains, Accessories for CU/CU effective stress](#)

Filter paper drain 100 mm diameter (Pack Of 50).

Standards

ASTM D2850, ASTM D4767, ASTM D7181, AASHTO T296, AASHTO T297



Piston Restraint Clamp for Ele Triaxial Cells

Code: [25-4200](#)

Product Group: [General Cell Accessories](#), [Aggressive Materials](#)

For Ele Triaxial Cells Manufactured From July 1996.

Standards

BS 1377, ASTM D2850, ASTM D4767, AASHTO T296, AASHTO T297

Further Information

To lock the loading piston into position



70mm Triaxial Cell 1700Kpa with 5 Pressure/ Drainage Ports. Supplied with Two Valves.

Code: [25-4117](#)

Product Group: [Triaxial Cell](#), [Triaxial Cells](#)

- Working pressure up to 1700 kPa
- All round visibility
- Sample sizes 38 to 100 mm diameter
- Rapid assembly and dismantling
- Accepts a range of interchangeable submersible load transducers

This range of precision made triaxial cells has been designed to meet the requirements of the modern soils laboratory. The cells have been treated to minimise corrosion. Particular attention has been paid to the quality of finish between the piston and the head. Final assembly includes the fitting of an O-ring seal and the use of special lubricant to reduce friction to a minimum and eliminate water leakage.

The piston load capacity is designed to accept high horizontal forces which may be present during the final stages of a test. Each cell has five take-off positions drilled in the base for top drainage/back pressure, pore water pressure and bottom drainage. Two no-volume change valves and an anvil for strain gauge/transducer datum are supplied for fitting to the cell.

A feature of these cells is that they all accept a single diameter piston. The internal height is such that a range of submersible load transducers can be fitted without any modification. Each cell will accept a range of base adaptors and various accessories for testing a wide range of specimens

Standards

BS 1377, ASTM D2850, ASTM D4767, ASTM D7181, AASHTO T296, AASHTO T297

Specification

| | |
|-------------------------------|-----------------------|
| Cell size | 70 mm |
| Max specimen size | 70 x 140 mm |
| Working pressure | 1701 kPa |
| Max piston load | 46 kN |
| Vertical clearance required | 430 mm |
| Horizontal clearance required | 180 mm |
| Weight kg | 7.3 |
| Maximum Working Pressure | 25 0 psi (1,700 kPa). |
| Maximum Piston Load | 10,100 lbf. (45 kN). |

Product Sheet

www.ele.com
+44 (0) 01525 249 200



| | |
|-----------------------|--|
| Maximum Specimen Size | 2.8" (70 mm) diam. x 5.6" (140 mm) l. |
| Required Clearance | 17" (430 mm) vertical; 7.1" (180 mm) horizontal. |
| Weights | Net 16 lbs. (7.3 kg). |



70mm Base Adaptor for 70mm Cells.

Code: [25-4176](#)

Product Group: [Base Pedestals](#), [Specimen Base Adaptors](#)

70mm Base Adaptor with Twin Pore Pressure Ports for 70mm Cells.

Standards

BS 1377, ASTM D2850, ASTM D4767, ASTM D7181, AASHTO T296, AASHTO T297



50mm Triaxial Cell 1700Kpa with 5 Pressure/ Drainage Ports. Supplied with Two Valves.

Code: 25-4047

Product Group: Triaxial Cell, Triaxial Cells

- Working pressure up to 1700 kPa
- All round visibility
- Sample sizes 38 to 100 mm diameter
- Rapid assembly and dismantling
- Accepts a range of interchangeable submersible load transducers

This range of precision made triaxial cells has been designed to meet the requirements of the modern soils laboratory. The cells have been treated to minimise corrosion. Particular attention has been paid to the quality of finish between the piston and the head. Final assembly includes the fitting of an O-ring seal and the use of special lubricant to reduce friction to a minimum and eliminate water leakage.

The piston load capacity is designed to accept high horizontal forces which may be present during the final stages of a test. Each cell has five take-off positions drilled in the base for top drainage/back pressure, pore water pressure and bottom drainage. Two no-volume change valves and an anvil for strain gauge/transducer datum are supplied for fitting to the cell.

A feature of these cells is that they all accept a single diameter piston. The internal height is such that a range of submersible load transducers can be fitted without any modification. Each cell will accept a range of base adaptors and various accessories for testing a wide range of specimens

Standards

BS 1377, ASTM D2850, ASTM D4767, AASHTO T296, AASHTO T297

Specification

| | |
|-------------------------------|-------------|
| Cell size | 50 mm |
| Max specimen size | 50 x 100 mm |
| Working pressure | 1700 kPa |
| Max piston load | 45 kN |
| Vertical clearance required | 380 mm |
| Horizontal clearance required | 155 mm |
| Weight kg | 4 |



38mm/1.5 Inch Base Adaptor for 50mm Cells.

Code: [25-4166](#)

Product Group: [Base Pedestals, Specimen Base Adaptors](#)

38mm/1.5 Inch Base Adaptor with Twin Pore Pressure Ports for 50mm Cells.

Standards

BS 1377, ASTM D2850, ASTM D4767, AASHTO T296, AASHTO T297



Membrane Placing Tool 35mm/38mm.

Code: [25-4290](#)

Product Group: [Membrane Placing Tools, O-Ring Placing Tools](#)

Membrane Placing Tool For 35Mm/1.4 Inch And 38Mm/1.5 Inch Samples.

Standards

ASTM D2850, ASTM D4767, ASTM D5084, AASHTO T296, AASHTO T297



Suction Membrane Device 38mm/1.5 Inch Diameter.

Code: [25-5100](#)

Product Group: [Suction Membrane Devices, Suction Membrane Device](#)

Suction Membrane Device For 38Mm/1.5 Inch Samples.



Two-Way Split Former 38mm/1.5 Inch Diameter.

Code: [25-5120](#)

Product Group: [Two-way Split Formers](#), [Two-Way Split Formers](#)

Two-Way Split Former For 38Mm/1.5 Inch Samples.



Two Part Split Mould 38mm

Code: [25-5130](#)

Product Group: [Two-way Split Moulds](#), [Two-Part Split Mould](#)



Valve No Volume Change 1/4 Inch BSp Fitted with 6 mm Connector and Integral Sealing Ring.

Code: [25-4520](#)

Product Group: [General Cell Accessories,](#)
[Accessories for CU/CU effective stress](#)

Standards

ASTM D2850, ASTM D4767, ASTM D7181, AASHTO T296, AASHTO T297



Drainage Line for 25-4250

Code: [25-5050/10](#)

Product Group: [Replacement Drainage Line](#)

1.4" Specimen Cap

Pressure Pad 38mm/1.5 Inch Diameter.

Code: [25-5050](#)

Product Group: [Pressure Pads](#)

38 mm / 1.5 Inch diameter pressure pad. The pad shall have two empty ports and will come complete with two blanking plugs, plastic tubing and connector. Suitable For both drained and undrained tests.



Standards

ASTM D2850, ASTM D4767, ASTM D7181, AASHTO T296, AASHTO T297



Rubber Membrane 38mm/1.5 Inch Diameter. Pack of 10.

Code: [25-5061](#)

Product Group: [Rubber Membranes](#)

Rubber Membrane For 38Mm/1.5 Inch Samples
(Pack Of 10).



Membrane Sealing Ring 38mm/1.5 Inch Diameter. Pack of 10.

Code: [25-5081](#)

Product Group: [Membrane Sealing Rings](#)

Membrane Sealing Ring 38Mm Diameter (Pack Of 10).



Porous Disc 38mm/1.5 Inch Diameter. Pack of 2.

Code: [25-5181](#)

Product Group: [Accessories for CU/CU effective stress, Porous Stones](#)

Porous disc For 38 mm/1.5 Inch samples (Pack Of 2).



Filter Paper Drain 38mm/1.5 Inch Diameter. Pack of 50.

Code: [25-5200](#)

Product Group: [Accessories for CU/CU effective stress, Filter Paper Drains](#)

Filter paper drain 38 mm diameter (Pack Of 50).



Membrane Placing Tool 70mm/2.8 Inch Diameter.

Code: 25-6470

Product Group: [Membrane Placing Tools](#), [O-Ring Placing Tools](#), [Tri-Flex 2 One-Cell Permeability Test System](#)

70Mm/2.8 Inch Diameter Membrane Placing Tool.



Suction Membrane Device 70mm Diameter.

Code: [25-6480](#)

Product Group: [Suction Membrane Devices](#), [Suction Membrane Device](#), [Tri-Flex 2 One-Cell Permeability Test System](#)

70Mm Diameter Suction Membrane Device.



Two-Way Split Former 70mm Diameter.

Code: [25-6500](#)

Product Group: [Two-way Split Formers](#), [Two-Way Split Formers](#)

70Mm Diameter Two-Way Split Former.



Two Part Split Mould 70mm

Code: [25-6530](#)

Product Group: [Two-way Split Moulds](#), [Two-Part Split Mould](#)

Pressure Pad 70mm Diameter.

Code: [25-6430](#)

Product Group: [Specimen Caps, Pressure Pads](#)

70 mm / 2.8" diameter pressure pad. The pad shall have two empty ports and will come complete with two blanking plugs, plastic tubing and connector. Suitable For both drained and undrained tests.



Standards

ASTM D2850, ASTM D4767, ASTM D5084, AASHTO T296, AASHTO T297, ASTM D7181



Rubber Membrane 70mm/2.8 Inch Diameter. Pack of 10.

Code: [25-6441](#)

Product Group: [Rubber Membranes](#), [Rubber Membranes](#), [Tri-Flex 2 One-Cell Permeability Test System](#), [Tri-Flex 2 Permeability Test Cell](#)

70 mm / 2.8" mm diameter rubber membrane (Pack Of 10).

Standards

ASTM D2850, ASTM D4767, ASTM D5084, AASHTO T296, AASHTO T297, ASTM D7181



Membrane Sealing Ring 70mm Diameter Pack of 10.

Code: [25-6461](#)

Product Group: [Membrane Sealing Rings](#), [Sealing Rings](#), [Tri-Flex 2 Permeability Test Cell](#)

70 mm diameter membrane sealing ring (Pack Of 10).

Standards

ASTM D2850, ASTM D4767, ASTM D5084, AASHTO T296, AASHTO T297



Porous Disc 70mm Diameter Pack of 2.

Code: [25-6561](#)

Product Group: [Accessories for CU/CU effective stress, Porous Stones, Tri-Flex 2 Permeability Test Cell](#)

70 mm diameter porous disc (pack of 2).

Standards

ASTM D2850, ASTM D4767, ASTM D5084, AASHTO T296, AASHTO T297, ASTM D7181



Filter Paper Drain 70mm/2.8 Inch Diameter. Pack of 50.

Code: [25-6580](#)

Product Group: [Filter Paper Drains, Accessories for CU/CU effective stress](#)

Filter paper drain 70 mm diameter (Pack Of 50).

Standards

ASTM D2850, ASTM D4767, ASTM D7181, AASHTO T296, AASHTO T297