



IF IT'S WORTH BUILDING, IT'S WORTH TESTING

Contents

www.ele.com
+44 (0) 01525 249 200



This wishlist was generated on 17/05/2016, and contains the following Products:

79-6360

12in Dia ASTM Sieve 75.0mm Stainless Steel Mesh.

79-6350

12in Dia ASTM Sieve 63.0mm Stainless Steel Mesh

79-6330

12in Dia ASTM Sieve 50.0mm Stainless Steel Mesh.

79-6310

12in Dia ASTM Sieve 37.5mm Stainless Steel Mesh.

79-6280

12in Dia ASTM Sieve 25.0mm Stainless Steel Mesh.

79-6260

12in Dia ASTM Sieve 19.0mm Stainless Steel Mesh.

79-6230

12in Dia ASTM Sieve 12.5mm Stainless Steel Mesh

79-6210

12in Dia ASTM Sieve 9.50mm Stainless Steel Mesh.

79-5820

12in Dia ASTM Sieve 4.75mm Stainless Steel Mesh. Non Standard Frame.

79-5860

12in Dia ASTM Sieve 2.36mm Stainless Steel Mesh.

79-5900

12in Dia ASTM Sieve 1.18mm Stainless Steel Mesh.

79-5940

12in Dia ASTM Sieve 600Mic Stainless Steel Mesh.

79-5960

12in Dia ASTM Sieve 425Mic Stainless Steel Mesh.

79-5980

12in Dia ASTM Sieve 300Mic Stainless Steel Mesh.

79-6020

12in Dia ASTM Sieve 150Mic Stainless Steel Mesh.

79-6060

12in Dia ASTM Sieve 75 Mic Stainless Steel Mesh.

79-6090

12in Dia ASTM Sieve 45 Mic Stainless Steel Mesh.

79-6150

12in Dia Lid ASTM.

79-6165

Sieve Pan with extended rim 12" Dia.

24-9060

Proctor Mould 1/30 Ft3.

24-9228

ASTM Cbr Mould Complete with Collar & Perferated Base

78-5457/01

Electronic Balance - 8 000 g x 0.1 g

23-3302

Sample Splitter (Riffle Box) - 8 chutes, 2" (51 mm) chute width

42-1725

Sand Absorption Cone and Tamper

24-4949/02

Sand Equivalent Shaker

42-5305/02

Los Angeles Abrasion Machine

42-5300/10

Set of 12 Abrasive Charges (ASTM).

38-2695

Pocket Concrete Penetrometer

35-1480

Standard Concrete Test Hammer

35-1475/10

Rubbing Stone

42-3000A

Round Graduated Bottle

42-3040

Colour Standard to ASTM C40

42-3050

Sodium Hydroxide Solution

45-9300

Vacuum Pyknometer, 6000 g

45-9315/02

Rice Test Vibrator 115vAC, 50/60 Hz

45-9330

Residual Pressure Manometer

45-9315/14

Drierite Desiccant

88-3110/02

High Vacuum Pump

45-9301

Filtering Kit

45-9301/14

1/4" O.D Plastic Tubing

24-4865/01

Constant Temperature Bath 0 to 99.9 Deg.C X 0.1 Deg.C with Led Display and False Base Support.

45-3825/02

Centrifuge Extractor 3,000 g

45-6471/02

Circulating Water Bath



12in Dia ASTM Sieve 75.0mm Stainless Steel Mesh.

Code: 79-6360

Product Group: U.S Standard Testing Sieves, 12" Diameter ASTM Sieves, 12" Diameter ASTM Sieves, 12" Diameter ASTM Sieves

Standards

ASTM E11

Specification

Frames	Full height; 3-1/4" (82.5 mm) depth to mesh.
Construction	Polished and lacquered brass with S.S. mesh.
Nameplates	Show standard, alternate and Tyler Screen Scale equivalent designations.
Weights	Net 4 lbs. (1.8 kg).
Sieve Size or Number	3"
Sieve Opening Standard	75 mm
Sieve Opening Alternative (in.)	3



12in Dia ASTM Sieve 63.0mm Stainless Steel Mesh

Code: 79-6350

Product Group: U.S Standard Testing Sieves, 12" Diameter ASTM Sieves, 12" Diameter ASTM Sieves, 12" Diameter ASTM Sieves

Standards

ASTM E11

Specification

Frames	Full height; 3-1/4" (82.5 mm) depth to mesh.
Construction	Polished and lacquered brass with S.S. mesh.
Nameplates	Show standard, alternate and Tyler Screen Scale equivalent designations.
Weights	Net 4 lbs. (1.8 kg).
Sieve Size or Number	2-1/2"
Sieve Opening Standard	63 mm
Sieve Opening Alternative (in.)	2.5



12in Dia ASTM Sieve 50.0mm Stainless Steel Mesh.

Code: 79-6330

Product Group: U.S Standard Testing Sieves, 12" Diameter ASTM Sieves, 12" Diameter ASTM Sieves, 12" Diameter ASTM Sieves

Standards

ASTM E11

Specification

Frames	Full height; 3-1/4" (82.5 mm) depth to mesh.
Construction	Polished and lacquered brass with S.S. mesh.
Nameplates	Show standard, alternate and Tyler Screen Scale equivalent designations.
Weights	Net 4 lbs. (1.8 kg).
Sieve Size or Number	2"
Sieve Opening Standard	50 mm
Sieve Opening Alternative (in.)	2



12in Dia ASTM Sieve 37.5mm Stainless Steel Mesh.

Code: 79-6310

Product Group: U.S Standard Testing Sieves, 12" Diameter ASTM Sieves, 12" Diameter ASTM Sieves, 12" Diameter ASTM Sieves

Standards

ASTM E11

Specification

Frames	Full height; 3-1/4" (82.5 mm) depth to mesh.
Construction	Polished and lacquered brass with S.S. mesh.
Nameplates	Show standard, alternate and Tyler Screen Scale equivalent designations.
Weights	Net 4 lbs. (1.8 kg).
Sieve Size or Number	1-1/2"
Sieve Opening Standard	38.1 mm
Sieve Opening Alternative (in.)	1.5



12in Dia ASTM Sieve 25.0mm Stainless Steel Mesh.

Code: 79-6280

Product Group: U.S Standard Testing Sieves, 12" Diameter ASTM Sieves, 12" Diameter ASTM Sieves, 12" Diameter ASTM Sieves

Standards

ASTM E11

Specification

Frames	Full height; 3-1/4" (82.5 mm) depth to mesh.
Construction	Polished and lacquered brass with S.S. mesh.
Nameplates	Show standard, alternate and Tyler Screen Scale equivalent designations.
Weights	Net 4 lbs. (1.8 kg).
Sieve Size or Number	1"
Sieve Opening Standard	25.0 mm
Sieve Opening Alternative (in.)	1



12in Dia ASTM Sieve 19.0mm Stainless Steel Mesh.

Code: 79-6260

Product Group: U.S Standard Testing Sieves, 12" Diameter ASTM Sieves, 12" Diameter ASTM Sieves, 12" Diameter ASTM Sieves

Standards

ASTM E11

Specification

Frames	Full height; 3-1/4" (82.5 mm) depth to mesh.
Construction	Polished and lacquered brass with S.S. mesh.
Nameplates	Show standard, alternate and Tyler Screen Scale equivalent designations.
Weights	Net 4 lbs. (1.8 kg).
Sieve Size or Number	3/4"
Sieve Opening Standard	19.0 mm
Sieve Opening Alternative (in.)	0.75



12in Dia ASTM Sieve 12.5mm Stainless Steel Mesh

Code: 79-6230

Product Group: U.S Standard Testing Sieves, 12" Diameter ASTM Sieves, 12" Diameter ASTM Sieves, 12" Diameter ASTM Sieves

Standards

ASTM E11

Specification

Frames	Full height; 3-1/4" (82.5 mm) depth to mesh.
Construction	Polished and lacquered brass with S.S. mesh.
Nameplates	Show standard, alternate and Tyler Screen Scale equivalent designations.
Weights	Net 4 lbs. (1.8 kg).
Sieve Size or Number	1/2"
Sieve Opening Standard	12.5 mm
Sieve Opening Alternative (in.)	0.5



12in Dia ASTM Sieve 9.50mm Stainless Steel Mesh.

Code: 79-6210

Product Group: U.S Standard Testing Sieves, 12" Diameter ASTM Sieves, 12" Diameter ASTM Sieves, 12" Diameter ASTM Sieves

Standards

ASTM E11

Specification

Frames	Full height; 3-1/4" (82.5 mm) depth to mesh.
Construction	Polished and lacquered brass with S.S. mesh.
Nameplates	Show standard, alternate and Tyler Screen Scale equivalent designations.
Weights	Net 4 lbs. (1.8 kg).
Sieve Size or Number	3/8"
Sieve Opening Standard	9.5 mm
Sieve Opening Alternative (in.)	0.375



12in Dia ASTM Sieve 4.75mm Stainless Steel Mesh. Non Standard Frame.

Code: 79-5820

Product Group: U.S Standard Testing Sieves, 12" Diameter ASTM Sieves, 12" Diameter ASTM Sieves, 12" Diameter ASTM Sieves

Standards

ASTM E11

Specification

Frames	Full height; 3-1/4" (82.5 mm) depth to mesh.
Construction	Polished and lacquered brass with S.S. mesh.
Nameplates	Show standard, alternate and Tyler Screen Scale equivalent designations.
Weights	Net 4 lbs. (1.8 kg).
Sieve Size or Number	No. 4
Sieve Opening Standard	4.75 mm
Sieve Opening Alternative (in.)	0.187



12in Dia ASTM Sieve 2.36mm Stainless Steel Mesh.

Code: 79-5860

Product Group: U.S Standard Testing Sieves, 12" Diameter ASTM Sieves, 12" Diameter ASTM Sieves, 12" Diameter ASTM Sieves

Standards

ASTM E11

Specification

Frames	Full height; 3-1/4" (82.5 mm) depth to mesh.
Construction	Polished and lacquered brass with S.S. mesh.
Nameplates	Show standard, alternate and Tyler Screen Scale equivalent designations.
Weights	Net 4 lbs. (1.8 kg).
Sieve Size or Number	No. 7
Sieve Opening Standard	2.36 mm
Sieve Opening Alternative (in.)	0.0937



12in Dia ASTM Sieve 1.18mm Stainless Steel Mesh.

Code: 79-5900

Product Group: U.S Standard Testing Sieves, 12" Diameter ASTM Sieves, 12" Diameter ASTM Sieves, 12" Diameter ASTM Sieves

Standards

ASTM E11

Specification

Frames	Full height; 3-1/4" (82.5 mm) depth to mesh.
Construction	Polished and lacquered brass with S.S. mesh.
Nameplates	Show standard, alternate and Tyler Screen Scale equivalent designations.
Weights	Net 4 lbs. (1.8 kg).
Sieve Size or Number	No. 16
Sieve Opening Standard	1.18 mm
Sieve Opening Alternative (in.)	0.0469



12in Dia ASTM Sieve 600Mic Stainless Steel Mesh.

Code: [79-5940](#)

Product Group: [U.S Standard Testing Sieves, 12" Diameter ASTM Sieves, 12" Diameter ASTM Sieves, 12" Diameter ASTM Sieves](#)

Standards

ASTM E11

Specification

Frames	Full height; 3-1/4" (82.5 mm) depth to mesh.
Construction	Polished and lacquered brass with S.S. mesh.
Nameplates	Show standard, alternate and Tyler Screen Scale equivalent designations.
Weights	Net 4 lbs. (1.8 kg).
Sieve Size or Number	No. 30
Sieve Opening Standard	600 μ m
Sieve Opening Alternative (in.)	0.0234



12in Dia ASTM Sieve 425Mic Stainless Steel Mesh.

Code: 79-5960

Product Group: U.S Standard Testing Sieves, 12" Diameter ASTM Sieves, 12" Diameter ASTM Sieves, 12" Diameter ASTM Sieves

Standards

ASTM E11

Specification

Frames	Full height; 3-1/4" (82.5 mm) depth to mesh.
Construction	Polished and lacquered brass with S.S. mesh.
Nameplates	Show standard, alternate and Tyler Screen Scale equivalent designations.
Weights	Net 4 lbs. (1.8 kg).
Sieve Size or Number	No. 40
Sieve Opening Standard	425 um
Sieve Opening Alternative (in.)	0.0165



12in Dia ASTM Sieve 300Mic Stainless Steel Mesh.

Code: [79-5980](#)

Product Group: [U.S Standard Testing Sieves, 12" Diameter ASTM Sieves, 12" Diameter ASTM Sieves, 12" Diameter ASTM Sieves](#)

Standards

ASTM E11

Specification

Frames	Full height; 3-1/4" (82.5 mm) depth to mesh.
Construction	Polished and lacquered brass with S.S. mesh.
Nameplates	Show standard, alternate and Tyler Screen Scale equivalent designations.
Weights	Net 4 lbs. (1.8 kg).
Sieve Size or Number	No. 50
Sieve Opening Standard	300 μ m
Sieve Opening Alternative (in.)	0.0117



12in Dia ASTM Sieve 150Mic Stainless Steel Mesh.

Code: 79-6020

Product Group: U.S Standard Testing Sieves, 12" Diameter ASTM Sieves, 12" Diameter ASTM Sieves, 12" Diameter ASTM Sieves

Standards

ASTM E11

Specification

Frames	Full height; 3-1/4" (82.5 mm) depth to mesh.
Construction	Polished and lacquered brass with S.S. mesh.
Nameplates	Show standard, alternate and Tyler Screen Scale equivalent designations.
Weights	Net 4 lbs. (1.8 kg).
Sieve Size or Number	No. 100
Sieve Opening Standard	150 µm
Sieve Opening Alternative (in.)	0.0059



12in Dia ASTM Sieve 75 Mic Stainless Steel Mesh.

Code: 79-6060

Product Group: U.S Standard Testing Sieves, 12" Diameter ASTM Sieves, 12" Diameter ASTM Sieves, 12" Diameter ASTM Sieves

Standards

ASTM E11

Specification

Frames	Full height; 3-1/4" (82.5 mm) depth to mesh.
Construction	Polished and lacquered brass with S.S. mesh.
Nameplates	Show standard, alternate and Tyler Screen Scale equivalent designations.
Weights	Net 4 lbs. (1.8 kg).
Sieve Size or Number	No. 200
Sieve Opening Standard	75 um
Sieve Opening Alternative (in.)	0.0029



12in Dia ASTM Sieve 45 Mic Stainless Steel Mesh.

Code: 79-6090

Product Group: U.S Standard Testing Sieves, 12" Diameter ASTM Sieves, 12" Diameter ASTM Sieves, 12" Diameter ASTM Sieves

Standards

ASTM E11

Specification

Frames	Full height; 3-1/4" (82.5 mm) depth to mesh.
Construction	Polished and lacquered brass with S.S. mesh.
Nameplates	Show standard, alternate and Tyler Screen Scale equivalent designations.
Weights	Net 4 lbs. (1.8 kg).
Sieve Size or Number	No. 325
Sieve Opening Standard	45 um
Sieve Opening Alternative (in.)	0.0017



12in Dia Lid ASTM.

Code: 79-6150

Product Group: Sieve Lids and Receivers ASTM, U.S
Standard Testing Sieves, 12" Diameter ASTM Sieves,
12" Diameter ASTM Sieves, 12" Diameter ASTM
Sieves

Standards

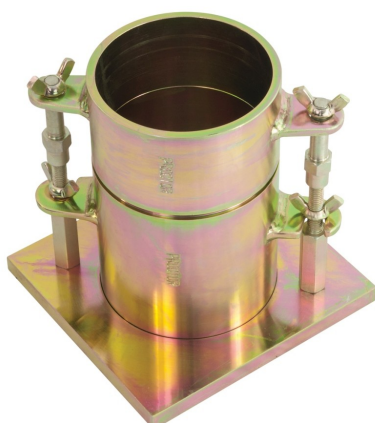
ASTM E11



Sieve Pan with extended rim 12" Dia.

Code: [79-6165](#)

Product Group: [U.S Standard Testing Sieves](#)



Proctor Mould 1/30 Ft3.

Code: 24-9060

Product Group: Accessories for ASTM and Proctor compaction, Proctor compaction

Standards

ASTM D558, ASTM D559, ASTM D560, ASTM D698, ASTM D1557, AASHTO T99, AASHTO T134, AASHTO T135, AASHTO T136, AASHTO T180

Specification

Dimensions	101.6 mm dia x 116.4 mm high
Rammer Mould Volume	1/30 ft ³
Construction	All steel, threaded studs with wing nuts, plated.
Weight	5.4 kg



ASTM Cbr Mould Complete with Collar & Perforated Base

Code: [24-9228](#)

Product Group: [ASTM/AASHTO CBR mould and accessories](#)

With collar and perforated baseplate.

Standards

ASTM D1883, AASHTO T193

Specification

Mould	152.4 x 177.8 mm (inside diameter x height)
Collar	50.8 mm height, fits both ends of mould
Base plate	Perforated
Construction	All steel, plated
Weight kg	9



Electronic Balance - 8 000 g x 0.1 g

Code: [78-5457/01](#)

Product Group: [Electronic Balances](#)

Further Information

****Not available for sale in the USA****

Specification

Capacity resolution	8000 g x 0.1 g
Pan size	225 x 300 mm
Mains and battery	Yes
Dimensions (l x w x h)	340 x 320 125 mm
Weight	4 kg



Sample Splitter (Riffle Box) - 8 chutes, 2" (51 mm) chute width

Code: [23-3302](#)

Product Group: [Sample Splitters \(Riffles\)](#)

Standards

ASTM C136, ASTM C702, ASTM D271, ASTM D492, AASHTO T27, AASHTO T87, AASHTO T248

Specification

Chutes	Stainless steel.
Hopper	Stainless steel.
Frame	Painted steel.
Hopper Dimensions	9-3/4" x 19-1/4" (248 x 489 mm).
Weight	Net 37 lbs. (16.8 kg).

Spares/Consumables



Pan for Sample Splitters 23-3152 and 23-3302

Code: [23-3152/10](#)



Scoop pan for Sample Splitters 23-3152 and 23-3302

Code: [4699-1805](#)



Sand Absorption Cone and Tamper

Code: [42-1725](#)

Product Group: [Sand Absorption Cone and Tamper](#)

Standards

ASTM C128, AASHTO T84

Specification

Mold

Brass; 40 mm top diam. x 90 mm base diam. x 75 mm h.

Tamper

Steel; 1" diam. working face x 6-5/8" l. (25.4 x 168 mm); 12 oz.(340 g) weight.

Weight

Net 1 lb. (453 g).



Sand Equivalent Shaker

Code: [24-4949/02](#)

Product Group: [Sand Equivalent Shaker](#)

Standards

ASTM D2419, AASHTO T176, CA 217, CA 229

Further Information

110vAC, 50/60 Hz, 1Ø.

Specification

Motor	1.9 Amp synchronized; 1/12 hp.
Cylinder Holder	Spring-loaded.
Shaking Mechanism	8" (203 mm) stroke; 175 strokes/minute (+/- 2 strokes).
Timing Circuit	Built-in; 45 seconds, 10 minute and continuous run.
Dimensions	19.5" w. x 14" d. x 17" h. (495 x 356 x 432 mm) with holder.
Weight	Net 50 lbs. (23 kg).

Spares/Consumables



Sand Equivalent Cylinder

Code: [24-4917/10](#)



Los Angeles Abrasion Machine

Code: [42-5305/02](#)

Product Group: [Los Angeles Abrasion Machine](#)

The machine consists of a closed hollow cylindrical steel drum rotating around its horizontal axis on ball bearing units mounted on a sturdy base framework.

The drum is driven at a speed of between 30 - 33 rpm via an enclosed belt drive arrangement from an electric motor/gearbox unit situated on the base frame. Inside the drum a full length steel shelf is attached, accessed by a dust-proof opening.

The cylinder incorporates a removable internal shelf, one shelf position is provided to meet the requirements of both the ASTM and EN test standards.

Controls are located easily on the right-hand side of the machine at convenient operator height.

Start and stop push buttons and a subtracting revolution counter allows the user to preset the number of revolutions before an automatic stop.

Standards

ASTM C131, ASTM C535, AASHTO T96, NF P18-573

Further Information

110-120vAC, 60 Hz, 1Ø.

Specification

Capacity	5,000 g each of aggregate and charge.
Drum Speed	30-33 rpm.
Frame	Welded structural steel.
Counter	Adjustable; automatic shut-off; push-button reset and adjustment.
Controls	Magnetic motor starter with overload protection and integral On-Off switches.
Dimensions	38.6" w. x 36.2" d. x 38.6" h. (980 x 920 x 980 mm).
Weight	Net 882 lbs. (400 kg).
Motor	1 HP

Set of 12 Abrasive Charges (ASTM).

Code: [42-5300/10](#)

Product Group: [Los Angeles Abrasion Machine](#), [Los Angeles Abrasion Machine](#)

ASTM Set of 12.



Standards

EN 1097-2, ASTM C131, ASTM C535, AASHTO T96



Pocket Concrete Penetrometer

Code: 38-2695

Product Group: Concrete Mortar Penetrometer, Concrete Mortar Penetrometer, Setting Time by Penetration Resistance

Supplied complete with belt-loop, canvas carrying case.

Standards

ASTM C187, ASTM C191, ASTM C780

Specification

Dimensions	19 x 178 mm (diameter x length)
Shaft Needle	Steel, 1/20 in ² surface area
Range	0 to 700 lbf/in ²
Scale	Direct-reading, indicator sleeve holds reading until released
Weight	227 g
Needle	Steel shaft; 1/20 sq. in. surface area.
Range	0 to 700 psi.
Scale	Direct-reading; indicator sleeve holds reading until released.
Dimensions	3/4" (19 mm) diam. x 7" (178 mm) long.
Carrying Case	Canvas, with belt-loop.
Weight	Net 8 oz. (227 g).



Standard Concrete Test Hammer

Code: [35-1480](#)
Product Group: [Concrete Test Hammer, Surface Hardness](#)

The hammer is intended for testing the quality of concrete in finished structures such as buildings and bridges. Supplied complete with carrying case and carborundum stone, the hammer is suitable for testing concrete with compressive strengths of 10 to 70 N/mm2.

Standards

ASTM C805

Specification

Body	Includes indicator scale, calibration curves.
Calibration Curves	Rebound number vs. compressive strength.
Rubbing Stone	Prepares test surface.
Accuracy	Within 15 %.
Carrying Case	Plastic.
Weight	Net 3 lbs. (1.4 kg).

Spares/Consumables



Rubbing Stone

Code: [35-1475/10](#)



Rubbing Stone

Code: [35-1475/10](#)

Product Group: [Concrete Test Hammer](#)

Standards

ASTM C805



Round Graduated Bottle

Code: [42-3000A](#)

Product Group: [Organic Impurities Test, Graduated Impurities Test Bottle](#)

Standards

ASTM C40, AASHTO T21

Specification

Construction

Glass; 16 oz. (473 ml)
capacity; graduated.

Cap

Plastic; screw-on.

Weight

Net 4 oz. (113 g).

Spares/Consumables



Sodium Hydroxide Solution

Code: [42-3050](#)



Colour Standard to ASTM C40

Code: 42-3040

Product Group: Organic Impurities Test, Color Standard Chart, Organic Impurities in Fine Aggregate

With five organic colour transparencies mounted in a holder.

Standards

ASTM C40, AASHTO T21

Specification

Color Standards

Dimensions

Weight

Five, on non-fading glass.

3 1/8" w. x 2-7/8" d. x 4" h.
(76 x 73 x 102 mm).

Net 4 oz. (113 g).

Spares/Consumables



Sodium Hydroxide Solution

Code: 42-3050



Sodium Hydroxide Solution

Code: 42-3050

Product Group: Organic Impurities Test, Sodium Hydroxide Solution

3% sodium hydroxide solution

Standards

ASTM C40, AASHTO T21

Specification

Solution

3% sodium hydroxide; 97% water; one pint plastic bottle.

Weight

Net 1-1/2 lbs. (0.6 kg).



Vacuum Pyknometer, 6000 g

Code: 45-9300

Product Group: Vacuum Pyknometer, Vacuum Pyknometer (6,000 Gram), Specific Gravity (Rice) Test with 6,000 gram Vacuum Pyknometer

The Vacuum Pyknometer is a large capacity unit used in the rice test for determining the maximum specific gravity of bituminous paving mixtures. The Pyknometer has a transparent top for observation and a lightweight polycarbonate construction.

The Pyknometer has a total volume of 10 litres and will conveniently accept samples of 6000 grams to minimise segregation effects.

Standards

EN 12697-5, ASTM D2041, AASHTO T209, AASHTO T283

Specification

Capacity	Approximately 10 liters; 6,000 g (13 .2 lbs.) sample weight.
Construction	Lightweight polycarbonate with transparent upper half.
Gauge	2" (50.8 mm) diam., 30" x 0.5" Hg.
Aspirator	Plastic; 3/8" pipe thread (included).
Connections	Water inlet valve; quick disconnect for vacuum gauge and hose.
Dimensions	10-3/4" (273 mm) o.d. x 16" (406 mm) h.
Weight	Net 8 lbs. (3.6 kg).



Rice Test Vibrator 115vAC, 50/60 Hz

Code: 45-9315/02

Product Group: Rice Test Vibrator, Specific Gravity (Rice) Test with 2,000 gram Vacuum Pyknometer, Specific Gravity (Rice) Test with 6,000 gram Vacuum Pyknometer

Standards

ASTM D2041, AASHTO T209

Specification

Motor	1/20 h.p.; 3000 vpm; 1.6 amp.
Dimensions	19-1/2" (495 mm) h.; 12" (30 mm) base diameter.
Weight	Net 12 lbs. (5.4 kg).



Residual Pressure Manometer

Code: 45-9330

Product Group: Specific Gravity (Rice) Test with 2,000 gram Vacuum Pyknometer, Specific Gravity (Rice) Test with 6,000 gram Vacuum Pyknometer, Digital Residual Pressure Manometer Non-toxic

The digital residual pressure manometer is an accurate and non-toxic alternative to Mercury manometers used in the Rice Test. Ideal for field or laboratory use, the Model 45-9330 Single Pressure Digital Manometer measures low pressures from -20 to 20" w.c. (-37.4 to 37.4 mm Hg) with $\pm 1.5\%$ full scale accuracy.

Standards

ASTM D2041, EHS 9300, AASHTO T209, AASHTO T283

Specification

Service.	Air and compatible gases.
Accuracy.	$\pm 1.5\%$ Full Scale @ 72F (22.2C). Includes linearity and repeatability.
Pressure Hysteresis.	$\pm 0.1\%$ of Full Scale.
Pressure Limits.	5 psig (0.34 bar).
Thermal Effect.	0.05% F.S./F
Display.	4 digit LCD (0.425"H x 0.234"W digits).
Power Requirements.	9 V alkaline battery, installed non-functional, user replaceable.
Process Connections.	Barbed connection for use with 3/16" or 1/4" I.D. tubing.
Weight.	10.8 oz (306 g).
Agency Approvals.	CE.



Drierite Desiccant

Code: 45-9315/14

Product Group: Tall Non-Vacuum, Dessicator Cabinet,
Vacuum Pyknometer (6,000 Gram), Vacuum
Pyknometer (2,000 Gram)

Further Information

1 lb.

Specification

Motor	1/20 h.p.; 3000 vpm; 1.6 amp.
Dimensions	19-1/2" (495 mm) h.; 12" (30 mm) base diameter.
Weight	Net 14.3 lbs. (6.5 kg).



High Vacuum Pump

Code: 88-3110/02

Product Group: Tri-Flex 2 Master Control Panel, High Vacuum Pump

115vAC, 50/60 Hz, 1Ø.

Specification

Free Air Display

85 liters per minute (3 cu. ft. per minute).

Ultimate Vacuum

29.95 inches of mercury.

Motor/Pump

1/3 hp; speed 1725 rpm.

Operating Temperature

30°F to 170°F (0°C to 78°C).

Intake Port

1/4" o.d. for 1/4" tubing.

Dimensions

11 - 1/4" h. x 15 - 1/2" l. x 6 - 1/2" w. (29 x 39 x 16 cm).

Weight

Net 28 lbs. (12.7 kg).



Filtering Kit

Code: 45-9301

Product Group: Vacuum Pyknometer (6,000 Gram), High Vacuum Pump, Standard Vacuum Pump, Specific Gravity (Rice) Test with 2,000 gram Vacuum Pyknometer, Specific Gravity (Rice) Test with 6,000 gram Vacuum Pyknometer

Functions as water trap for vacuum pump.



1/4" O.D Plastic Tubing

Code: [45-9301/14](#)

Product Group: [Vacuum Pyknometer \(6,000 Gram\)](#)



Constant Temperature Bath 0 to 99.9 Deg.C X 0.1 Deg.C with Led Display and False Base Support.

Code: [24-4865/01](#)

Product Group: [Constant Temperature Bath](#)

This compact, bench-top stirrer is used for dispersing soil samples in water for hydrometer analysis. The stirrer is supplied complete with Mixing Paddle and Dispersion Cup. Weight 4 kg.

Further Information

Specially designed for the sedimentation testing of soils and other fine grained material, the bath is supplied with a false bottom to assist in circulation of the bath liquid. Will accommodate six Sedimentation Cylinders.

Specification

Dimensions (l x w x h)	535 x 210 x 610 mm external
Capacity	Holds up to 6 sedimentation cylinders
Construction	Stainless steel with toughened glass front
Temperature Control	Heater/thermostat/circulation with digital controller unit
Power	1500 watts
Weight kg	12



Centrifuge Extractor 3,000 g

Code: 45-3825/02

Product Group: Asphalt Centrifuge Extractors

Standards

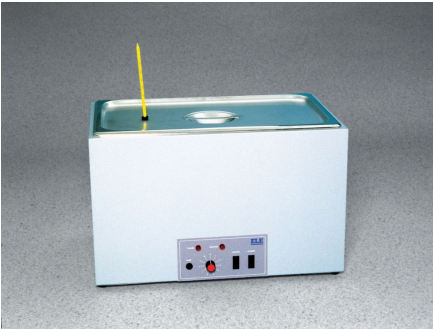
ASTM D2172, AASHTO T164

Further Information

120vAC, 60 Hz, 1Ø.

Specification

Control	Variable speed, 0-3,600 rpm; brake for fast stopping.
Motor	1/6 h.p.
Cover	Aluminum; removable, with integral cup for adding solvent.
Housing	Aluminum; removable, sealed.
Bowl	Aluminum; removable.
Filter Discs	10 included.
Dimensions	18" w. x 18" d. x 19" h. (457 x 457 x 483 mm).
Weight	Net 140 lbs. (63.5 kg).



Circulating Water Bath

Code: [45-6471/02](#)
Product Group: [Circulating Water Bath](#)

Standards

ASTM D6927, AASHTO T245

Further Information

110vAC, 60 Hz, 1Ø.

Specification

Capacity	Up to twelve 4" (101.6 mm) diam. Marshall specimens.
Heaters	Thermostatically controlled.
Circulator	Magnetic type.
Range	Ambient to 150°F (65.5°C); accurate to within +/- 1°F (+/- 1°C).
Construction	Insulated stainless steel tank with painted steel exterior.
Weight	Net 47 lbs. (21.4 kg).