



IF IT'S WORTH BUILDING, IT'S WORTH TESTING

This wishlist was generated on 28/06/2016, and contains the following Products:

46-6100/01

Asphalt Binder Analyser 220-240V 50/60 Hz

45-3803

Filter Discs Pack of 100

45-3815/01

Rotatest 3000

45-3815/10

Replacement bowl for Rotatest 3000 centrifuge extractor

46-2190

Hubbard-Carmick Specific Gravity Bottle

46-3310/01

Cleveland Flash Cup Apparatus

46-5340/C

Penetration Needle

46-5500/01

Constant Temperature Bath 21 - 56°C

46-5290

Standard Penetrometer

46-5360/10

Penetration Needle

46-5800

Transfer Dish

46-5861

Penetration Tin

23-6191/10

Stainless Steel Bowl 4.73 Litres.

45-5580/01

Isomantle Electric Heater

23-6191/01

**Bench-Mounting Mixer 5 Litre Capacity Complete with Bowl Beater and Whisk.
220-240V 50Hz 1Ph.**

45-6460

Compaction Hammer

45-6600/01

AutoComp 100-A

78-3104/01

Digital Hotplate

45-6462

Paper Discs

45-6310

Compaction Mould

23-4200

**Proctor/Core Cutter Extruder Frame and Hydraulic Jack. Extrudes 100mm/4
Inch Diameter Specimens**

45-6310/10

Compaction Mould Body

45-6310/11

Baseplate

45-6310/12

Filling/Extraction Collar

45-6463

Steel Block

45-6550/01

30 L Heating Bath with Led Display Cover

25-3700/01

MultiPlex 50 Load Frame

27-1559

50kN S-type Load Cell

78-0860

50kN Load Measuring Ring

45-6890

Flow Meter

45-6880

Flow Meter BS/EN

45-6850

Breaking Head (Marshall)

27-1300/02

DSU Electronic Readout and Control System 110 V AC 60 Hz

47-5175

Compact Core Drill

47-5565

Core Barrel 100 mm

47-5605

Core Barrel 150 mm

45-9315/01

Rice Test Vibrator

45-9315/10

Attachment Required for 6000 g

81-0518

Timer Clock

45-9300

Vacuum Pycnometer, 6000 g

45-9305/01

Vacuum Pycnometer Apparatus

78-1250/01

225 Litre Drying Oven

34-8100/09

Buoyancy Balance

34-8105

Cradle

42-4300

150mm Aggregate Crushing Value Apparatus. Supplied Complete with Metal Measure and Tamping Rod.

42-4000

Aggregate Impact Value Apparatus Complete with 16mm Dia X 600mm Long Rod

42-5305/10

Set of 12 Abrasive Charges EN)

42-5310/01

Los Angeles Abrasion Machine with CE Safety Cabinet W/ Microswitches. 220-240V 50Hz 1Ph.

42-1005

Wire Basket Brass with Handle Nominal 6000Cm³ Capacity with 1.7mm Wire Mesh.

34-2830

Bulk Density Measure 10 Litre

34-2820

Bulk Density Measure 15 Litre

42-2000

Bulk Density Measure 7 Litre

42-1995

Bulk Density Measure 3 Litre.

42-1700

Sand Absorption Cone.

42-1720

Tamping Rod.

42-0821

3.1 Shape Index Caliper.

42-0410

Flakiness Gauge.

42-0600

Set of Flakiness Sieves Comprising 1 Ea 4.9mm 7.2mm 10.2mm 14.4mm 19.7mm 26.3mm and 33.9mm

79-5650

8in Dia ASTM Sieve 63.0mm Stainless Steel Mesh.

79-5610

8in Dia ASTM Sieve 37.5mm Stainless Steel Mesh.

79-5580

8in Dia ASTM Sieve 25.0mm Stainless Steel Mesh.

79-5560

8in Dia ASTM Sieve 19.0mm Stainless Steel Mesh.

79-5550

8in Dia ASTM Sieve 16.0mm Stainless Steel Mesh.

79-5530

8in Dia ASTM Sieve 12.5mm Stainless Steel Mesh.

79-5510

8in Dia ASTM Sieve 9.50mm Stainless Steel Mesh.

79-5020

8in Dia ASTM Sieve 4.75mm Stainless Steel Mesh.

79-5000

8inDia ASTM Sieve 6.30mm Stainless Steel Mesh.

79-5060

8in Dia ASTM Sieve 2.36mm Stainless Steel Mesh.

79-5070

8in Dia ASTM Sieve 2.0mm Stainless Steel Mesh.

79-5100

8in Dia ASTM Sieve 1.18mm Stainless Steel Mesh.

79-5140

8in Dia ASTM Sieve 600 Mic Stainless Steel Mesh.

79-5180

8in Dia ASTM Sieve 300 Mic Stainless Steel Mesh.

79-5160

8in Dia ASTM Sieve 425 Mic Stainless Steel Mesh.

79-5220

8in Dia ASTM Sieve 150 Mic Stainless Steel Mesh.

79-5260

8in Dia ASTM Sieve 75 Mic Stainless Steel Mesh.

79-5410

8in Dia Receiver.

79-5400

8 Inch Dia Lid.

23-7452

Speedy Moisture Tester D2 Large 0-20% Moisture Range. Supplied Less Calcium Carbide

23-7700

Calcium Carbide Powder 500G.

23-7600

Speedy Calibration Unit Self Contained Unit.

80-0200/06

ELE Sieve Shaker

79-7001

75 µm Washing Sieve

79-7000

75 µm Washing Sieve

79-7200

Sieve Brush Brass and Nylon

79-7210

Sieve Brush Nylon

Contents

www.ele.com
+44 (0) 01525 249 200



82-5420

Digital Pocket Thermometer

82-7720/01

Vacuum Pump

82-7720/10

Vacuum Oil

81-0375

Rubber Tubing

81-0094

Support Assembly

81-0100

Spatula 100 mm

81-0120

Spatula 150 mm

81-0140

Spatula 200 mm

81-0180

Chattaway Spatula 125 mm

81-0200

Aluminium Scoop Small

81-0220

Aluminium Scoop Large

81-0222

Scoop - 250 mm long

81-0590

Vernier Caliper (LCD) Range 0 to 200mm X 0.01mm

81-0500

Heavy-duty Rubber Gloves

81-0594

Chisel - Masonry Type

81-0705

Wire Brush

81-0715

Straight Edge

81-0805

Engineer's Steel Rule

81-4765

Polythene Bag - Pack of 100

81-4775

Polythene Bag - Pack of 50

81-4779

Beaker - 500 ml

81-5020

Bowl - 2.5 litre

81-5040

Bowl - 5 litre

81-2979

Moisture Content Tin

81-4020

Sample Tray - 306 x 306 x 38 mm

81-4030

Sample Tray - 406 x 406 x 50 mm

81-4080

Sample Tray - 610 x 610 x 63 mm

81-4160

Sample Tray - 910 x 910 x 76 mm

81-4230

Sample Tray - 1200 x 1160 x 50 mm

81-4819

Wire Basket - 150 µm wire mesh

81-4823

Wire Basket - 1.18 mm wire mesh

81-4825

Wire Basket - 3.35 mm wire mesh

82-0380

Measuring Cylinder - Glass 100 ml

82-0420

Measuring Cylinder - Glass 250 ml

82-0460

Measuring Cylinder - Glass 500 ml

82-0500

Measuring Cylinder - Glass 1000 ml

82-1840

Measuring Cylinder - Plastic 100 ml

82-1860

Measuring Cylinder - Plastic 250 ml

82-1900

Measuring Cylinder - Plastic 1000 ml

82-4005

Glass Stirring Rod

82-2820

Syringe with Rubber Bulb.

82-1000

Volumetric Flask - 100 ml

82-1020

Volumetric Flask - 250 ml

82-1040

Volumetric Flask - 500 ml

Contents

www.ele.com
+44 (0) 01525 249 200



82-1060

Volumetric Flask - 1000 ml

82-1120

Conical Flask (Erlenmeyer) - 500 ml

82-1140

Conical Flask (Erlenmeyer) - 250 ml

82-2660

Funnel

82-1970

Evaporating Dish - 100 x 40 mm

82-2000

Evaporating Dish - 150 x 45 mm

82-2010

Evaporating Dish - 200 x 55 mm

82-3145

Polythene Bottle - 1 litre

82-3060

Reagent Bottle

82-1540

Weighing Bottle

82-0260

Beaker Cover

82-0120

Beaker - 100 ml

82-0140

Beaker - 250 ml

82-0200

Beaker - 600 ml

82-0220

Beaker - 1000 ml

82-2170

Dessicator - Vacuum

82-2100

Dessicator - Non-vacuum

24-0434

**Liquid Limit Device ASTM/ Aashto Hand-Operated W/ Revolution Counter.
Supplied Less Grooving Tool.**

24-0453

ASTM Metal Grooving Tool.

24-0430

Glass Plate.

24-9000

BS Standard Compaction Mould 1000Cm Capacity.

24-9002

Standard Compaction Rammer 2.5Kg BS1377-1975

24-9010

Straight Edge 300mm.

24-9066

ASTM Compaction Mould 152mm.

24-9070

ASTM/Modified Proctor Compaction Rammer 4.5Kg.

24-9236

ASTM Cutting Collar.

24-9238

ASTM Spacing Disc.

24-9240

Filter Screen 150mm Dia with 0.15mm Mesh.

24-9244

5Lb (2.27Kg) Split Surcharge Weight.

24-9250

Filter Paper Equivalent to Whatman No 5 150mm Dia Box of 100.

24-9198

BS Cbr Mould Body.

24-9262

Swell Stand

24-9184

Penetration/Swell Dial Gauge ASTM.

23-3425

Large Capacity Sample Splitter.



Asphalt Binder Analyser 220-240V 50/60 Hz

Code: 46-6100/01

Product Group: Ignition Method

Designed to measure the asphalt binder content of hot mix asphalt (HMA) using loss on ignition, in accordance with AASHTO T 308-10, ASTM D6307-10 and BSEN 12697-39:2012.

Further Information

The integral microprocessor controlled weighing and calculation system is configurable to allow variations to the standard test method. Test result reports are available in both printed and software format. The high temperature afterburner minimises the production of noxious waste fumes. Supplied complete with 2 sets of sample baskets.

Features:

- Designed to measure asphalt binder content by loss on ignition
- Avoids health, environmental and waste management issues
- Avoids the expense associated with older solvent extraction methods
- Reduced emissions due to high temperature afterburner
- Controlled via a multi-lingual touchscreen interface
- English, Spanish, French, Chinese, Italian and Russian language display
- Other languages are available to order
- Automatic calculation of final sample weight and binder % result
- Adjustable aggregate correction factor
- Average test times from 20 mins for 6 mm aggregates, to 45 mins for 40 mm aggregates
- Permanent (dot-matrix) printed reports
- USB data output compatible with most spread sheets
- Easy naming, storage and recall of recipes that can be transferred between units
- Simplified menu structure with secure 'Supervisor' and 'Operator' settings
- Metal waste gas extraction pipe
- Factory fitted thermocouple access port, if temperature calibration is to be carried out
- Precise weight measurements, displayed to 0.1g resolution
- Capacity for large sample sizes for more accurate results (max. sample is 4.5kg)

Specification

Max Temp (°C)	750
Dimensions: Internal (HxWxD)	220 x 450 x 350 mm
Dimensions: External (HxWxD)	980 x 600 x 775 mm

Product Sheet

www.ele.com
+44 (0) 01525 249 200



Type
Thermocouple type
Max power (W)

Bench-top
K
8000



Filter Discs Pack of 100

Code: [45-3803](#)

Product Group: [Asphalt Centrifuge Extractors](#)

248mm outer diameter with 44mm diameter hole.

Standards

EN 12697-1, ASTM D2172, AASHTO T164

Further Information

****NOT AVAILABLE FOR SALE IN THE USA****



Rotatest 3000

Code: 45-3815/01

Product Group: Asphalt Centrifuge Extractors

Centrifuge extractor used to determine the quantitative amount of bitumen in bituminous paving mixtures. Variable speed control from 0 to 3600 rpm through the front panel mounted control knob and brake control included for rapid deceleration.

Precision machined aluminium removable cover with integral cup for adding solvent, with sealed cast aluminium housing.

For 220 V AC, 50 - 60 Hz, 1ph.

Standards

EN 12697-1, ASTM D2172, AASHTO T164

Further Information

****NOT AVAILABLE FOR SALE IN THE USA****

3000 g capacity. Supplied with 100 Filter Discs. For 220 V AC, 50 - 60 Hz, 1ph.



Replacement bowl for Rotatest 3000 centrifuge extractor

Code: [45-3815/10](#)

Product Group: [Asphalt Centrifuge Extractors](#)

Holds 3000 g.

Further Information

****NOT AVAILABLE FOR SALE IN THE USA****



Hubbard-Carmick Specific Gravity Bottle

Code: 46-2190

Product Group: [Hubbard-Carmick Specific Gravity Bottles](#)

Conical type 25 ml.

Standards

ISO 3838, BS 4699, ASTM D70, AASHTO T228

Further Information

****NOT AVAILABLE FOR SALE IN THE USA****



Cleveland Flash Cup Apparatus

Code: [46-3310/01](#)

Product Group: [Cleveland Flash Cup Apparatus](#)

The ELE Semi-Automatic Cleveland Open Cup flashpoint Tester is equipped with an electrically heated cup (with a variable control to set temperature rise rate), a button operated and electrically driven sweep arm and a test flame for use on natural gas. Bench mounted, the unit is incorporated in an easy to clean stainless steel case.

Standards

BS 2000-36, EN ISO 2592, ASTM D92, IP 36

Further Information

****NOT AVAILABLE FOR SALE IN THE USA****

For 220 - 240 V AC, 50 - 60 Hz, 1 ph.

Specification

Temperature Range	Ambient to 400°C
Power	500 W maximum
Ramp rate	Variable, manually controlled
Voltage	220/240 V, 50/60 Hz
Size (HxWxD)	33 x 31 x 29 cm
Weight	6.5 kg



Penetration Needle

Code: [46-5340/C](#)

Product Group: [Penetration Test](#)

Hardened steel, supplied with an UKAS verification certificate. For testing to BS 2000-49 and ASTM D5. (Pack contains 1 needle only).

Standards

BS 2000-49, EN 1426, EN 13179-2, ASTM D5, AASHTO T49, IP 49

Further Information

****NOT AVAILABLE FOR SALE IN THE USA****



Constant Temperature Bath 21 - 56°C

Code: [46-5500/01](#)

Product Group: [Penetration Test](#)

A bench mounting bath specially designed for the conditioning of bitumen samples prior to penetration tests. Incorporating a highly accurate thermostat, the bath maintains a temperature between 21 and 56°C \pm 0.1°C (at ambient). An integral cover and deep tray for penetration testing are supplied as standard.

Standards

BS 2000-49, EN 1426, EN 13179-2, ASTM D5, AASHTO T49, IP 49

Further Information

Not available for sale in the USA



Standard Penetrometer

Code: [46-5290](#)

Product Group: [Penetration Test](#), [Bitumen Penetration Test](#), [Asphalt Penetrometer](#)

Penetration readings are quickly taken using this simple to operate apparatus. The 150 mm diameter dial is graduated in 400 divisions of 0.1 mm. Supplied without needles and penetration tins.

Standards

BS 2000-49, EN 1426, EN 13179-2, IP 49, ASTM D5, AASHTO T49

Further Information

Model shown with sample container; not included, order separately.

Specification

Dial Indicator	6" (150 mm) diam.; 400 mm x 0.1 mm.
Plunger Weight	47.5 g.
Needle	ASTM Style (non-certified); one included.
Plunger Release	Manual mechanism.
Weight	Net 18 lbs. (8.2 kg).

Spares/Consumables



ASTM (Non-Certified) Penetration Needle

Code: [46-5290/10](#)



Penetration Needle

Code: [46-5360/10](#)

Product Group: [Penetration Test](#)

Hardened steel.

Standards

BS 2000-49, EN 1426, EN 13179-2, ASTM D5, AASHTO T49, IP 49

Further Information

****NOT AVAILABLE FOR SALE IN THE USA****



Transfer Dish

Code: [46-5800](#)

Product Group: [Bitumen Penetration Test](#), [Asphalt Penetrometer](#), [Penetration Test](#)

For use with ELE Penetrometer 46-5295.

Standards

BS 2000-49, EN 1426, EN 13179-2, ASTM D5, AASHTO T49, IP 49



Penetration Tin

Code: [46-5861](#)

Product Group: [Penetration Test](#)

For penetrations below 200, approximately 55 mm diameter x 35 mm deep.

Standards

BS 2000-49, EN 1426, EN 13179-2, ASTM D5, AASHTO T49, IP 49

Further Information

****NOT AVAILABLE FOR SALE IN THE USA****



Stainless Steel Bowl 4.73 Litres.

Code: [23-6191/10](#)

Product Group: [Sample Mixers](#), [Mixing](#), [Sample Mixers](#)

For use with the 5 Litre Bench Mounted Mixer -
[23-6191/01](#)



Isomantle Electric Heater

Code: [45-5580/01](#)

Product Group: [Sample Mixers](#), [Mixing](#), [Sample Mixers](#)

For use with 23-6191 Bench Mounting Mixer.

Standards

EN 12697-35

Further Information

****NOT AVAILABLE FOR SALE IN THE USA****



Bench-Mounting Mixer 5 Litre Capacity Complete with Bowl Beater and Whisk. 220-240V 50Hz 1Ph.

Code: [23-6191/01](#)

Product Group: [Sample Mixers](#), [Mixing](#), [Sample Mixers](#)

The mixer has two electrically switched mixing speeds which obviates the need to switch off during speed selection. The mixing head comprises a beater which contra-rotates about a central shaft using planetary gearing. A lever-acting lifting device facilitates the insertion and removal of the bowl. This mixer is suitable for the mixing of soil samples, mortar, bituminous mixtures and associated materials where comparatively small samples are being prepared. Supplied with stainless steel bowl, beater and whisk.

Standards

BS 598-107, BS 1377-1, BS 1924-1

Further Information

****NOT AVAILABLE FOR SALE IN THE USA****

Specification

Dimensions	545 x 380 x 550 mm
Beater Speeds (rpm) low, intermediate, high	136, 281, 580
Central shaft speeds (rpm) low, high	60, 124, 255
Rated power	500 W
Weight	20.2 kg

Spares/Consumables



Stainless Steel Bowl 4.73 Litres.

Code: [23-6191/10](#)



Compaction Hammer

Code: [45-6460](#)

Product Group: [Manual Compaction, Stability Compaction Hammer](#)

Satisfies BS 598. The hammer has a 4535 g sliding weight with a free fall of 457 mm.

Standards

EN 12697-30, ASTM D6926, AASHTO T245

Specification

Tamping Face	3-7/8" (98 mm) diam.
Hammer	10 lb. (4.54 kg).
Drop	18" (457 mm).
Construction	Machined steel; cast aluminum handle.
Weight	Net 16 lbs. (7.2 kg).



AutoComp 100-A

Code: 45-6600/01

Product Group: Automatic Compaction

- Fully automatic, simple to operate
- Built-in safety features
- Uniform compaction
- Automatic blow counter

This ruggedly constructed automatic compactor provides a consistent and even degree of compaction. The unit incorporates a compaction pedestal comprising a laminated hardwood block secured to a concrete base by a 300 mm square x 25 mm thick steel plate. The mechanism lifts the 4535 g hammer and automatically releases it at the specified height of 457 mm. The conveniently positioned control fascia panel comprises of a mains light, start and stop buttons and a direct-reading counter used to set the required number of blows.

During operation the AutoComp 100-A automatically counts down to zero. Dual rammer pick-ups have been incorporated, reducing stress on the machine's internal mechanism.

Particular attention has been paid to operator safety by the inclusion of various in-built safety features.

Standards

EN 12697-10, EN 12697-30

Further Information

****NOT AVAILABLE FOR SALE IN THE USA****

Specification

Dimensions (l x w x h)	535 x 535 x 1880 mm
Compaction foot diameter	98.52 mm

Product Sheet

www.ele.com
+44 (0) 01525 249 200



Sliding weight	4535 g
Height of drop	457 mm
Weight	278 kg



Digital Hotplate

Code: [78-3104/01](#)

Product Group: [Digital Hotplate](#)

Further Information

****Not available for sale in the USA****

Specification

Dimensions	520 x 360 x 130 mm
Construction	Robust metal with anodised aluminium plate heated surface
Maximum temperature	300 x 1°C
Rated power	1500 W

Paper Discs

Code: [45-6462](#)

Product Group: [Accessories for manual and automatic compaction, Filter Paper Discs](#)

Non-absorbent, 99 mm diameter, pack of 100.



Standards

EN 12697-30

Specification

Weight

Net 2.9 oz. (82 g).

Compaction Mould

Code: 45-6310

Product Group: Accessories for manual and automatic compaction, Asphalt Compaction Mould

Comprising of mould body, baseplate and combined filling/extraction collar.



Standards

EN 12697-30, ASTM D6926, AASHTO T245

Specification

Construction	Machined seamless steel forming mold; base and collar.
Finish	Plated for rust resistance.
Dimensions	4" (101.6 mm) i.d. x 3" (76.2 mm) internal h. with base.
Weight	Net 6 lbs. (2.7 kg).



Proctor/Core Cutter Extruder Frame and Hydraulic Jack. Extrudes 100mm/4 Inch Diameter Specimens

Code: 23-4200

Product Group: [Accessories for manual and automatic compaction, Soil Extruders](#)

Adaptor plates will be supplied; extrudes samples from BS Compaction Mould, Proctor Mould 100 mm, Core Cutter and Marshall Mould. Maximum extrusion force 20kn.

Standards

BS 1377-1

Further Information

****NOT AVAILABLE FOR SALE IN THE USA****



Compaction Mould Body

Code: [45-6310/10](#)

Product Group: [Accessories for manual and automatic compaction](#)

Accepts baseplate and filling/extraction collar of 45-6310 compaction mould.

Standards

EN 12697-30

Further Information

****NOT AVAILABLE FOR SALE IN THE USA****



Baseplate

Code: [45-6310/11](#)

Product Group: [Accessories for manual and automatic compaction](#)

For compaction mould.

Standards

EN 12697-30

Further Information

****NOT AVAILABLE FOR SALE IN THE USA****



Filling/Extraction Collar

Code: [45-6310/12](#)

Product Group: [Accessories for manual and automatic compaction](#)

For compaction mould.

Standards

EN 12697-30

Further Information

****NOT AVAILABLE FOR SALE IN THE USA****

Steel Block

Code: [45-6463](#)

Product Group: [Accessories for manual and automatic compaction](#)

100 mm diameter x 50 mm height. For heating the compaction hammer foot.



Standards

EN 12697-30

Further Information

****NOT AVAILABLE FOR SALE IN THE USA****

Spares/Consumables



Baseplate

Code: [45-6310/11](#)



Compaction Mould Body

Code: [45-6310/10](#)



30 L Heating Bath with Led Display Cover

Code: [45-6550/01](#)

Product Group: [Accessories for manual and automatic compaction](#)

Standards

BS 2000-49, EN 1426, EN 13179-2, ASTM D5, AASHTO T49, IP 49

Further Information

****NOT AVAILABLE FOR SALE IN THE USA****

MultiPlex 50 Load Frame

Code: 25-3700/01

Product Group: CBR Load Frames, Marshall Load Frames, Triaxial Load Frames

Compact bench mounting load frame designed for performing laboratory CBR, unconfined compression, Quick Undrained Triaxial and Marshall Stability Tests. Has a variable speed of 0.5 to 50mm per minute and features rapid approach of platen.



Standards

EN 12697-34, BS 598, BS 1377, BS 1924, ASTM D1883, EN 12697-23, EN 12697-24, EN 13286-47, AASHTO T193, ASTM D2850, ASTM D4767, AASHTO T296, AASHTO T297

Further Information

****NOT AVAILABLE FOR SALE IN THE USA****

Specification

Dimensions (l x w x h)	550 x 400 x 1470 mm
Max vertical clearance	800 mm
Horizontal clearance	265 mm
Platen diameter	133 mm
Platen travel	100 mm
Platen speed range	0.5 to 50 mm/min
Rapid approach speed	40 mm/min
Weight kg	100, (shipping 113)



50kN S-type Load Cell

Code: [27-1559](#)

Product Group: [Load Measurement](#), [Force measurement](#), [Electronic Instrumentation](#)

Maximum working capacity of 50 kN and excitation 10 V ac/dc with an output of 2.7 mV/V nominal.
Aluminium alloy and stainless steel construction with IP65 environmental protection.

Standards

EN 12697-34

Further Information

****NOT AVAILABLE FOR SALE IN THE USA****



50kN Load Measuring Ring

Code: [78-0860](#)

Product Group: [Clamped Boss Load Rings](#), [Digital Tritest 50 Load Frame](#), [Load Measurement](#), [Proving Rings](#), [Accessories for the Marshall test](#), [CBR-Test 50 Machine](#), [Load Measurement](#), [CBR Loading Press](#), [Hand-Operated](#), [Force measurement](#)

Calibrated in compression.

Standards

EN 12697-34

Specification

Capacity: kN, kgf, lbf	50.0, 5000, 11,200
Typical Design sensitivity: N/div, kgf/div, lbf/div	45.5, 4.54, 10.18
Overall height mm	248
Approx weight kg	7.9
Value of CBR	Above 40%
Capacity - kN	50
Capacity - kgf	5000
Capacity - lbf	11,200
Typical Design Sensitivity - kN/div	45.5
Typical Design Sensitivity - Kgf/div	4.54
Typical Design Sensitivity - lbf/div	10.18
Overall Height	9.76" (248 mm)
Approx Weight	17.4 lbs.(7.9 kg)

Spares/Consumables



Spare Dial Indicator for Load Rings

Code: [78-5461](#)



Flow Meter

Code: [45-6890](#)

Product Group: [Accessories for the Marshall test](#)

Dial gauge graduated 0.001 inches with 1 inch travel.
Supplied with stem brake unit and flow meter pedestal.

Standards

EN 12697-34

Further Information

****NOT AVAILABLE FOR SALE IN THE USA****



Flow Meter BS/EN

Code: [45-6880](#)

Product Group: [Accessories for the Marshall test](#)

Dial gauge graduated 0.01 mm with 25 mm travel.
Supplied with stem brake unit and flow meter pedestal.

Standards

EN 12697-34

Further Information

****NOT AVAILABLE FOR SALE IN THE USA****



Breaking Head (Marshall)

Code: 45-6850

Product Group: [Accessories for the Marshall test](#)

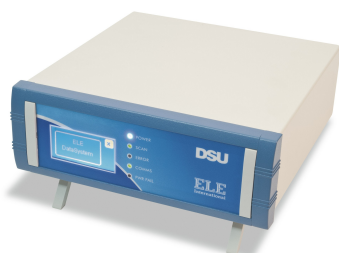
Complete with gauge disc. Supplied without flow meter.

Standards

EN 12697-34

Further Information

****NOT AVAILABLE FOR SALE IN THE USA****



DSU Electronic Readout and Control System 110 V AC 60 Hz

Code: [27-1300/02](#)

Product Group: [Data Logging with the DSU](#),
[Electronic Instrumentation](#), [Data Logging with the DSU](#)

- Download the full brochure here
[/Page/catalogue-download/NTRmZS9UaGUgTkVXIERTVSBVU0EucGRm]
- Download the full DS7.2 geotechnical software brochure here
[/Page/catalogue-download/NTRmZS9OZXcgRfM3IFNvZnR3YXJlIFVTQTY5LnBkZg==]
- 4 channel automatic control and data-logging unit
- Automatic, dual-frame control
- Performs CBR, Marshall, Unconfined Compression, Direct and Residual Shear, One-Dimensional Consolidation, Unconfined Undrained, Consolidated Drained and Unconsolidated Drained tests
- LAN connection - software can be running anywhere on your server
- Never lose data from power fails - 2 gigabytes of non-volatile memory

The Data System Unit (DSU) is a versatile instrument designed to accommodate the general logging requirements of geotechnical and materials testing engineers. Its intelligent interface allows the user to work with a range of different sensors.

Further Information

Become a member of the ELE International web site, add this new product to a wishlist to receive a quote! Click here [\[Login\]](#)

This product is now available in the USA and Canada!



Compact Core Drill

Code: 47-5175

Product Group: Compact Core Drill Machine

This compact and portable core drilling machine is designed to cut cores up to 150 mm diameter from concrete, asphalt and similar hard construction material.

The machine comprises a vertical support column which carries the drill head/motor assembly.

An integral water swivel is built into the drill head providing a 12 mm connection to an external water supply via 12 mm flexible hose (not supplied). The motor assembly comprises a 4 hp, 2-stroke petrol engine. Speeds of 800 rpm or 1200 rpm may be selected. A ball screw mechanism enables close control over drilling pressure and rapid return when drilling is completed.

The complete assembly is supplied on a rigid metal base frame with levelling facility and is suitable for vertically down drilling applications only.

Standards

EN 12697-32, EN 13280-4, BS 598-104

Further Information

****NOT AVAILABLE FOR SALE IN THE USA****

Special Note: Requires a continuous clean water supply via a 12 mm flexible hose (not supplied).



Core Barrel 100 mm

Code: [47-5565](#)

Product Group: [Core Barrels](#)

Standards

EN 12697-32, EN 13280-4, BS 598-104

Further Information

****NOT AVAILABLE FOR SALE IN THE USA****



Core Barrel 150 mm

Code: [47-5605](#)

Product Group: [Core Barrels](#)

Standards

EN 12697-32, EN 13280-4, BS 598-104

Further Information

****NOT AVAILABLE FOR SALE IN THE USA****



Rice Test Vibrator

Code: [45-9315/01](#)

Product Group: [Rice Test Vibrator](#), [Rice Test Vibrator](#)

The Rice Test Vibrator is used with the 45-9300 6000 g Vacuum Pyknometer. Adjustable clamps hold the pyknometer securely to the base during vibration.

Standards

EN 12697-5, ASTM D2041, AASHTO T209

Further Information

For 220 – 240 V AC, 50 Hz, 1ph.

Specification

Dimensions	495 x 30 mm (height x base diameter)
Motor	1/20 hp, 1.6 amp
Weight	5.5 kg
Motor	1/20 h.p.; 3000 vpm; 1.6 amp.
Dimensions	19-1/2" (495 mm) h.; 12" (30 mm) base diameter.
Weight	Net 14.3 lbs. (6.5 kg).



Attachment Required for 6000 g

Code: [45-9315/10](#)

Product Group: [Rice Test Vibrator](#), [Rice Test Vibrator](#),
[Specific Gravity \(Rice\) Test with 6,000 gram Vacuum](#)
[Pyknometer](#)

Accessory

Standards

EN 12697-5



Timer Clock

Code: [81-0518](#)

Product Group: [Rice Test Vibrator, Watches and Clocks](#)

Accessory

Standards

EN 12697-5

Further Information

****NOT AVAILABLE FOR SALE IN THE USA****

Spares/Consumables

Consistency Plunger

Code: [38-2010/10](#)





Vacuum Pyknometer, 6000 g

Code: 45-9300

Product Group: Vacuum Pyknometer, Vacuum Pyknometer (6,000 Gram), Specific Gravity (Rice) Test with 6,000 gram Vacuum Pyknometer

The Vacuum Pyknometer is a large capacity unit used in the rice test for determining the maximum specific gravity of bituminous paving mixtures. The Pyknometer has a transparent top for observation and a lightweight polycarbonate construction.

The Pyknometer has a total volume of 10 litres and will conveniently accept samples of 6000 grams to minimise segregation effects.

Standards

EN 12697-5, ASTM D2041, AASHTO T209, AASHTO T283

Specification

Capacity	Approximately 10 liters; 6,000 g (13 .2 lbs.) sample weight.
Construction	Lightweight polycarbonate with transparent upper half.
Gauge	2" (50.8 mm) diam., 30" x 0.5" Hg.
Aspirator	Plastic; 3/8" pipe thread (included).
Connections	Water inlet valve; quick disconnect for vacuum gauge and hose.
Dimensions	10-3/4" (273 mm) o.d. x 16" (406 mm) h.
Weight	Net 8 lbs. (3.6 kg).



Vacuum Pyknometer Apparatus

Code: 45-9305/01

Product Group: Vacuum Pyknometer

- Large capacity design minimises segregation effects
- Lightweight polycarbonate construction
- Transparent top for visual observations

The Vacuum Pyknometer is a large capacity unit used in the Rice Test for determining the maximum specific gravity of bituminous paving mixtures.

The Pyknometer has a total volume of approximately 10 litres and will conveniently accept samples of 6000 grams to minimise segregation effects. The unit is constructed of lightweight polycarbonate, with the upper half being transparent for visual observation of the effects of the vacuum.

The Vacuum Pyknometer Apparatus consists of a 6000 g pyknometer, vacuum pump with control valves/gauges, water trap and connection tubing.

Standards

EN 12697-5

Further Information

****NOT AVAILABLE FOR SALE IN THE USA****

Supplied complete with 6000 g pyknometer, vacuum pump with control valves/gauges, water trap and connection tubing. For 220 - 240 V AC, 50 Hz, 1ph.

Specification

Dimensions	273 x 406 mm (outside diameter x height)
Capacity	Approx. 10 litres, 6000 g sample weight
Connections	Water inlet valve; quick disconnect for vacuum gauge and hose
Weight	3.6 kg



225 Litre Drying Oven

Code: 78-1250/01

Product Group: Percentage Refusal Density (PRD),
Oven Drying Method, Oven Drying Method, Oven
Drying Method

Standards

EN 12697-32, EN 13280-4, BS 598-104, BS 1377

Specification

Capacity	225 litres
External Dimensions (l x w x h)	540 x 1040 x 940
Internal Dimensions (l x w x h)	440 x 920 x 600
Fluctuation	± 0.75°C
Rated power heater elements	2000 W
Shelves supplied	3
Shelf positions	4
Weight	80 kg



Buoyancy Balance

Code: [34-8100/09](#)

Product Group: [Hardened Concrete - Buoyancy Balance, Percentage Refusal Density \(PRD\)](#)

Standards

EN 12697-32, EN 13280-4, BS 598-104

Further Information

****NOT AVAILABLE FOR SALE IN THE USA****



Cradle

Code: 34-8105

Product Group: ELE Bouyancy Balance, Percentage
Refusal Density (PRD), Hardened Concrete -
Buoyancy Balance

Standards

EN 12697-32, EN 13280-4, BS 598-104



150mm Aggregate Crushing Value Apparatus. Supplied Complete with Metal Measure and Tamping Rod.

Code: 42-4300

Product Group: [Aggregate Crushing Value \(ACV\) and Ten Percent Fines Value \(TFV\)](#)

Comprising of 150 mm nominal diameter steel cylinder, plunger and base plate supplied complete with metal measure and tamping rod.

Standards

BS 812-112

Further Information

****NOT AVAILABLE FOR SALE IN THE USA****



Aggregate Impact Value Apparatus Complete with 16mm Dia X 600mm Long Rod

Code: [42-4000](#)

Product Group: [Aggregate Impact Value \(AIV\)](#)

Heavy duty construction, heavily plated assembly ensures corrosion resistance.

Standards

BS 812-112

Further Information

****NOT AVAILABLE FOR SALE IN THE USA****

Set of 12 Abrasive Charges EN)

Code: [42-5305/10](#)

Product Group: [Los Angeles Abrasion Machine](#)

EN Set of 12.

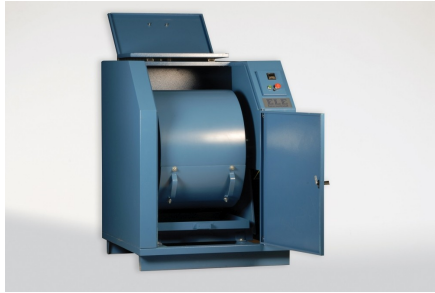


Standards

EN 1097-2, ASTM C131, ASTM C535

Further Information

****NOT AVAILABLE FOR SALE IN THE USA****



Los Angeles Abrasion Machine with CE Safety Cabinet W/ Microswitches. 220-240V 50Hz 1Ph.

Code: [42-5310/01](#)

Product Group: [Los Angeles Abrasion Machine](#)

The machine consists of a closed hollow cylindrical steel drum rotating around its horizontal axis on ball bearing units mounted on a sturdy base framework.

The drum is driven at a speed of between 30 - 33 rpm via an enclosed belt drive arrangement from an electric motor/gearbox unit situated on the base frame. Inside the drum a full length steel shelf is attached, accessed by a dust-proof opening.

The cylinder incorporates a removable internal shelf, one shelf position is provided to meet the requirements of both the ASTM and EN test standards.

Controls are located easily on the right-hand side of the machine at convenient operator height.

Start and stop push buttons and a subtracting revolution counter allows the user to preset the number of revolutions before an automatic stop.

Standards

EN 1097-2, ASTM C131, ASTM C535, NF P18-573

Further Information

NOT AVAILABLE FOR SALE IN THE USA



Wire Basket Brass with Handle Nominal 6000Cm³ Capacity with 1.7mm Wire Mesh.

Code: 42-1005

Product Group: Particle Density (specific gravity) and
Water Absorption for Coarse Aggregates

For BS 812 Relative Density. 200 mm diameter x 190
mm deep, 1.70 mm wire mesh.

Standards

EN 1097-6, EN 12697-6, BS 812, ASTM C127, AASHTO T85

Further Information

****NOT AVAILABLE FOR SALE IN THE USA****



Bulk Density Measure 10 Litre

Code: [34-2830](#)

Product Group: [Bulk Density Measures, Fresh Concrete - Bulk Density Measures](#)

Manufactured from heavy gauge steel these bulk density measures comply with the requirements of either BS 812, EN 1097-3, 12350-6 or ASTM C138. All measures incorporate carrying handles as standard.

Standards

EN 12350-6

Further Information

****NOT AVAILABLE FOR SALE IN THE USA****

For other bulk density measures see the aggregates section



Bulk Density Measure 15 Litre

Code: [34-2820](#)

Product Group: [Bulk Density Measures, Fresh Concrete](#) - [Bulk Density Measures](#)

Manufactured from heavy gauge steel these bulk density measures comply with the requirements of either BS 812, EN 1097-3, 12350-6 or ASTM C138. All measures incorporate carrying handles as standard.

Further Information

****NOT AVAILABLE FOR SALE IN THE USA****

For other bulk density measures see the aggregates section



Bulk Density Measure 7 Litre

Code: [42-2000](#)

Product Group: [Bulk Density Measures](#)

7 litre capacity

Standards

BS 812

Further Information

****NOT AVAILABLE FOR SALE IN THE USA****



Bulk Density Measure 3 Litre.

Code: [42-1995](#)

Product Group: [Bulk Density Measures](#)

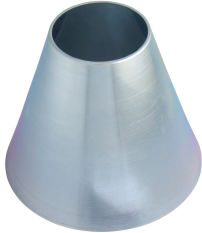
3 litre capacity

Standards

BS 812, ASTM C29

Further Information

****NOT AVAILABLE FOR SALE IN THE USA****



Sand Absorption Cone.

Code: 42-1700

Product Group: Particle Density (specific gravity) and Water Absorption for Fine Aggregates, Sand Absorption Cone and Tamper

Made of brass to the dimensions given in BS 812, ASTM C128 and AASHTO T84.

Standards

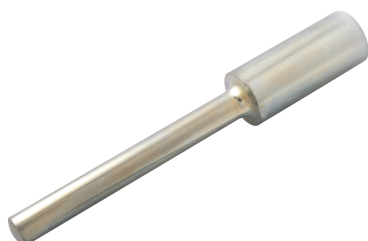
BS 812, ASTM C128, AASHTO T84

Tamping Rod.

Code: 42-1720

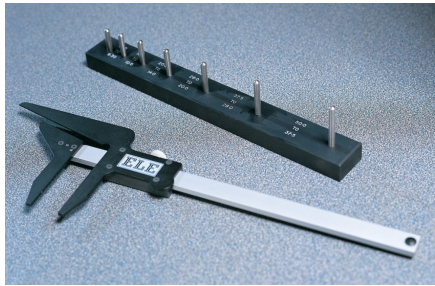
Product Group: Particle Density (specific gravity) and
Water Absorption for Fine Aggregates, Sand
Absorption Cone and Tamper

For use with cone. Tamping face is 25mm diameter
and complies with BS 812, ASTM C128 and AASHTO
T84.



Standards

BS 812, ASTM C128, AASHTO T84



3.1 Shape Index Caliper.

Code: [42-0821](#)

Product Group: [Determination of the Shape Index](#)

Designed to measure the ratio of length to width of individual aggregate particles.

Standards

EN 933-4

Further Information

****NOT AVAILABLE FOR SALE IN THE USA****



Flakiness Gauge.

Code: [42-0410](#)

Product Group: [Flakiness Sieves and Gauges](#)

Constructed of heavy gauge sheet steel to the dimensions specified in BS 812.

Standards

BS 812

Further Information

****NOT AVAILABLE FOR SALE IN THE USA****



Set of Flakiness Sieves Comprising 1 Ea 4.9mm 7.2mm 10.2mm 14.4mm 19.7mm 26.3mm and 33.9mm

Code: [42-0600](#)

Product Group: [Flakiness Sieves and Gauges](#)

Comprising of 1 each, 4.9 mm, 7.2 mm, 10.2 mm,
14.4 mm, 19.7 mm, 26.3 mm and 33.9 mm.

Standards

BS 813

Further Information

****NOT AVAILABLE FOR SALE IN THE USA****



8in Dia ASTM Sieve 63.0mm Stainless Steel Mesh.

Code: 79-5650

Product Group: U.S Standard Testing Sieves, 8"
Diameter ASTM Sieves, 8" Diameter ASTM Sieves, 8"
Diameter ASTM Sieves

Standards

ASTM E11

Specification

Frames	Full height; 2 1/4" (51 mm) depth to mesh.
Construction	Polished and lacquered brass with S.S. mesh.
Nameplates	Show standard, alternate and Tyler Screen Scale equivalent designations.
Weights	Net 1 lb. (453 g).
Sieve Size or Number	2-1/2"
Sieve Opening Standard	63 mm
Sieve Opening Alternative (in.)	2.5



8in Dia ASTM Sieve 37.5mm Stainless Steel Mesh.

Code: 79-5610

Product Group: U.S Standard Testing Sieves, 8"
Diameter ASTM Sieves, 8" Diameter ASTM Sieves, 8"
Diameter ASTM Sieves

Standards

ASTM E11

Specification

Frames	Full height; 2 1/4" (51 mm) depth to mesh.
Construction	Polished and lacquered brass with S.S. mesh.
Nameplates	Show standard, alternate and Tyler Screen Scale equivalent designations.
Weights	Net 1 lb. (453 g).
Sieve Size or Number	1-1/2"
Sieve Opening Standard	38.1 mm
Sieve Opening Alternative (in.)	1.5



8in Dia ASTM Sieve 25.0mm Stainless Steel Mesh.

Code: 79-5580

Product Group: U.S Standard Testing Sieves, 8"
Diameter ASTM Sieves, 8" Diameter ASTM Sieves, 8"
Diameter ASTM Sieves

Standards

ASTM E11

Specification

Frames	Full height; 2 1/4" (51 mm) depth to mesh.
Construction	Polished and lacquered brass with S.S. mesh.
Nameplates	Show standard, alternate and Tyler Screen Scale equivalent designations.
Weights	Net 1 lb. (453 g).
Sieve Size or Number	1"
Sieve Opening Standard	25.0 mm
Sieve Opening Alternative (in.)	1



8in Dia ASTM Sieve 19.0mm Stainless Steel Mesh.

Code: 79-5560

Product Group: U.S Standard Testing Sieves, 8"
Diameter ASTM Sieves, 8" Diameter ASTM Sieves, 8"
Diameter ASTM Sieves

Standards

ASTM E11

Specification

Frames	Full height; 2 1/4" (51 mm) depth to mesh.
Construction	Polished and lacquered brass with S.S. mesh.
Nameplates	Show standard, alternate and Tyler Screen Scale equivalent designations.
Weights	Net 1 lb. (453 g).
Sieve Size or Number	3/4"
Sieve Opening Standard	19.0 mm
Sieve Opening Alternative (in.)	0.75



8in Dia ASTM Sieve 16.0mm Stainless Steel Mesh.

Code: 79-5550

Product Group: U.S Standard Testing Sieves, 8"
Diameter ASTM Sieves, 8" Diameter ASTM Sieves, 8"
Diameter ASTM Sieves

Standards

ASTM E11

Specification

Frames	Full height; 2 1/8" (51 mm) depth to mesh.
Construction	Polished and lacquered brass with S.S. mesh.
Nameplates	Show standard, alternate and Tyler Screen Scale equivalent designations.
Weights	Net 1 lb. (453 g).
Sieve Size or Number	5/8"
Sieve Opening Standard	16.0 mm
Sieve Opening Alternative (in.)	0.625



8in Dia ASTM Sieve 12.5mm Stainless Steel Mesh.

Code: 79-5530

Product Group: U.S Standard Testing Sieves, 8"
Diameter ASTM Sieves, 8" Diameter ASTM Sieves, 8"
Diameter ASTM Sieves

Standards

ASTM E11

Specification

Frames	Full height; 2 1/4" (51 mm) depth to mesh.
Construction	Polished and lacquered brass with S.S. mesh.
Nameplates	Show standard, alternate and Tyler Screen Scale equivalent designations.
Weights	Net 1 lb. (453 g).
Sieve Size or Number	1/2"
Sieve Opening Standard	12.5 mm
Sieve Opening Alternative (in.)	0.5



8in Dia ASTM Sieve 9.50mm Stainless Steel Mesh.

Code: 79-5510

Product Group: U.S Standard Testing Sieves, 8"
Diameter ASTM Sieves, 8" Diameter ASTM Sieves, 8"
Diameter ASTM Sieves

Standards

ASTM E11

Specification

Frames	Full height; 2 1/8" (51 mm) depth to mesh.
Construction	Polished and lacquered brass with S.S. mesh.
Nameplates	Show standard, alternate and Tyler Screen Scale equivalent designations.
Weights	Net 1 lb. (453 g).
Sieve Size or Number	3/8"
Sieve Opening Standard	9.5 mm
Sieve Opening Alternative (in.)	0.375



8in Dia ASTM Sieve 4.75mm Stainless Steel Mesh.

Code: 79-5020

Product Group: U.S Standard Testing Sieves, 8"
Diameter ASTM Sieves, 8" Diameter ASTM Sieves, 8"
Diameter ASTM Sieves

Standards

ASTM E11

Specification

Frames	Full height; 2 1/8" (51 mm) depth to mesh.
Construction	Polished and lacquered brass with S.S. mesh.
Nameplates	Show standard, alternate and Tyler Screen Scale equivalent designations.
Weights	Net 1 lb. (453 g).
Sieve Size or Number	No. 4
Sieve Opening Standard	4.75 mm
Sieve Opening Alternative (in.)	0.187



8inDia ASTM Sieve 6.30mm Stainless Steel Mesh.

Code: 79-5000

Product Group: U.S Standard Testing Sieves, 8"
Diameter ASTM Sieves, 8" Diameter ASTM Sieves, 8"
Diameter ASTM Sieves

Standards

ASTM E11

Specification

Frames	Full height; 2 1/4" (51 mm) depth to mesh.
Construction	Polished and lacquered brass with S.S. mesh.
Nameplates	Show standard, alternate and Tyler Screen Scale equivalent designations.
Weights	Net 1 lb. (453 g).
Sieve Size or Number	1/4"
Sieve Opening Standard	6.3 mm
Sieve Opening Alternative (in.)	0.25



8in Dia ASTM Sieve 2.36mm Stainless Steel Mesh.

Code: 79-5060

Product Group: U.S Standard Testing Sieves, 8"
Diameter ASTM Sieves, 8" Diameter ASTM Sieves, 8"
Diameter ASTM Sieves

Standards

ASTM E11

Specification

Frames	Full height; 2 1/4" (51 mm) depth to mesh.
Construction	Polished and lacquered brass with S.S. mesh.
Nameplates	Show standard, alternate and Tyler Screen Scale equivalent designations.
Weights	Net 1 lb. (453 g).
Sieve Size or Number	No. 7
Sieve Opening Standard	2.36 mm
Sieve Opening Alternative (in.)	0.0937



8in Dia ASTM Sieve 2.0mm Stainless Steel Mesh.

Code: 79-5070

Product Group: U.S Standard Testing Sieves, 8"
Diameter ASTM Sieves, 8" Diameter ASTM Sieves, 8"
Diameter ASTM Sieves

Standards

ASTM E11

Specification

Frames	Full height; 2 1/4" (51 mm) depth to mesh.
Construction	Polished and lacquered brass with S.S. mesh.
Nameplates	Show standard, alternate and Tyler Screen Scale equivalent designations.
Weights	Net 1 lb. (453 g).
Sieve Size or Number	No. 10
Sieve Opening Standard	2.00 mm
Sieve Opening Alternative (in.)	0.0787



8in Dia ASTM Sieve 1.18mm Stainless Steel Mesh.

Code: 79-5100

Product Group: U.S Standard Testing Sieves, 8"
Diameter ASTM Sieves, 8" Diameter ASTM Sieves, 8"
Diameter ASTM Sieves

Standards

ASTM E11

Specification

Frames	Full height; 2 1/8" (51 mm) depth to mesh.
Construction	Polished and lacquered brass with S.S. mesh.
Nameplates	Show standard, alternate and Tyler Screen Scale equivalent designations.
Weights	Net 1 lb. (453 g).
Sieve Size or Number	No. 16
Sieve Opening Standard	1.18 mm
Sieve Opening Alternative (in.)	0.0469



8in Dia ASTM Sieve 600 Mic Stainless Steel Mesh.

Code: 79-5140

Product Group: U.S Standard Testing Sieves, 8"
Diameter ASTM Sieves, 8" Diameter ASTM Sieves, 8"
Diameter ASTM Sieves

Standards

ASTM E11

Specification

Frames	Full height; 2 1/4" (51 mm) depth to mesh.
Construction	Polished and lacquered brass with S.S. mesh.
Nameplates	Show standard, alternate and Tyler Screen Scale equivalent designations.
Weights	Net 1 lb. (453 g).
Sieve Size or Number	No. 30
Sieve Opening Standard	600 um
Sieve Opening Alternative (in.)	0.0234



8in Dia ASTM Sieve 300 Mic Stainless Steel Mesh.

Code: 79-5180

Product Group: U.S Standard Testing Sieves, 8"
Diameter ASTM Sieves, 8" Diameter ASTM Sieves, 8"
Diameter ASTM Sieves

Standards

ASTM E11

Specification

Frames	Full height; 2 1/4" (51 mm) depth to mesh.
Construction	Polished and lacquered brass with S.S. mesh.
Nameplates	Show standard, alternate and Tyler Screen Scale equivalent designations.
Weights	Net 1 lb. (453 g).
Sieve Size or Number	No. 50
Sieve Opening Standard	300 um
Sieve Opening Alternative (in.)	0.0117



8in Dia ASTM Sieve 425 Mic Stainless Steel Mesh.

Code: 79-5160

Product Group: U.S Standard Testing Sieves, 8"
Diameter ASTM Sieves, 8" Diameter ASTM Sieves, 8"
Diameter ASTM Sieves

Standards

ASTM E11

Specification

Frames	Full height; 2 1/4" (51 mm) depth to mesh.
Construction	Polished and lacquered brass with S.S. mesh.
Nameplates	Show standard, alternate and Tyler Screen Scale equivalent designations.
Weights	Net 1 lb. (453 g).
Sieve Size or Number	No. 40
Sieve Opening Standard	425 um
Sieve Opening Alternative (in.)	0.0165



8in Dia ASTM Sieve 150 Mic Stainless Steel Mesh.

Code: 79-5220

Product Group: U.S Standard Testing Sieves, 8"
Diameter ASTM Sieves, 8" Diameter ASTM Sieves, 8"
Diameter ASTM Sieves

Standards

ASTM E11

Specification

Frames	Full height; 2 1/8" (51 mm) depth to mesh.
Construction	Polished and lacquered brass with S.S. mesh.
Nameplates	Show standard, alternate and Tyler Screen Scale equivalent designations.
Weights	Net 1 lb. (453 g).
Sieve Size or Number	No. 100
Sieve Opening Standard	150 um
Sieve Opening Alternative (in.)	0.0059



8in Dia ASTM Sieve 75 Mic Stainless Steel Mesh.

Code: 79-5260

Product Group: U.S Standard Testing Sieves, 8"
Diameter ASTM Sieves, 8" Diameter ASTM Sieves, 8"
Diameter ASTM Sieves

Standards

ASTM E11

Specification

Frames	Full height; 2 1/8" (51 mm) depth to mesh.
Construction	Polished and lacquered brass with S.S. mesh.
Nameplates	Show standard, alternate and Tyler Screen Scale equivalent designations.
Weights	Net 1 lb. (453 g).
Sieve Size or Number	No. 200
Sieve Opening Standard	75 um
Sieve Opening Alternative (in.)	0.0029



8in Dia Receiver.

Code: 79-5410

Product Group: Sieve Lids and Receivers ASTM, U.S
Standard Testing Sieves, 8" Diameter ASTM Sieves,
8" Diameter ASTM Sieves, 8" Diameter ASTM Sieves

Standards

ASTM E11



8 Inch Dia Lid.

Code: 79-5400

Product Group: Sieve Lids and Receivers ASTM, U.S
Standard Testing Sieves, 8" Diameter ASTM Sieves,
8" Diameter ASTM Sieves, 8" Diameter ASTM Sieves

Standards

ASTM E11



Speedy Moisture Tester D2 Large 0-20% Moisture Range. Supplied Less Calcium Carbide

Code: [23-7452](#)

Product Group: [Rapid method by Speedy Moisture Tester](#), [Rapid Moisture Testers](#), [Rapid method by Speedy Moisture Tester](#)

Uses a technique based on the fact that water will react with calcium carbide to form a gas and that the quantity of gas formed is directly proportional to the water present. The gas pressure is indicated on a built-in pressure gauge. The pressure gauge calibrated in percentage of moisture. Has a moisture range of 0-20% with gauge divisions every 0.2%. Holds a sample size of 20 g. Includes an electronic balance of 200 g capacity x 0.1 g readability and is supplied in plastic carrying case.

Standards

BS 812, ASTM D4944, AASHTO T217

Specification

Model	D2 Large
Moisture Range	0 to 20%
Gauge divisions	0.20%
Sample weight g	20
Weight complete kg	8.4

Spares/Consumables



Portable Electronic Balance

Code: [23-7452/12](#)



Calcium Carbide Powder 500G.

Code: [23-7700](#)

Product Group: [Accessories for the Speedy Moisture Tester](#), [Accessories for the Speedy Moisture Tester](#)

Supplied in 500 g container.

Standards

ASTM D4944, AASHTO T217

Further Information

****NOT AVAILABLE FOR SALE IN THE USA****



Speedy Calibration Unit Self Contained Unit.

Code: [23-7600](#)

Product Group: [Accessories for the Speedy Moisture Tester](#), [Rapid Moisture Testers](#), [Accessories for the Speedy Moisture Tester](#)

A self-contained unit designed to enable an operator to check the accuracy of the Speedy Moisture Tester. The unit comprises a master dial, integral air pump, control connections and tools for checking gauge accuracy and pressure leaks, with instructions for simple re-calibrations.

Standards

ASTM D4944, AASHTO T217



ELE Sieve Shaker

Code: [80-0200/06](#)

Product Group: [ELE Sieve Shaker](#)

The ELE sieve shaker is powered by an electromagnetic drive that has no rotating parts to wear making it maintenance free and extremely quiet in operation.

The unit features a triple Vertical-Lateral-Rotary vibrating action that moves the sample over the sieve producing faster more efficient sieving, while the rapid vertical movements also help keep the apertures from blinding.

The shaker is ideal for laboratory or on site use. It is robust, compact and sufficiently lightweight to be portable. The separate digital microprocessor controlled console unit incorporates a keypad for setting the sieving program and is isolated from any effects of vibration from the shaker.

As standard the shaker includes, timer 0-999 minutes, adjustable vibration intensity and adjustable intermittent or continuous operation.

The unit accepts up to ten 200 mm or 8 inch, full height, diameter sieves and lid and receiver, or up to six 300 mm or 12 inch diameter sieves and lid and receiver. Complete as specified. Dimensions (l x w x h) 380 x 440 x 1085 mm. For 220 - 240 V AC, 60 Hz 1ph.



75 µm Washing Sieve

Code: [79-7001](#)

Product Group: [Washing Sieve](#)

200 mm Diameter, 200 mm Deep

Standards

BS 410, ISO 3310

Further Information

****NOT AVAILABLE FOR SALE IN THE USA****



75 µm Washing Sieve

Code: [79-7000](#)

Product Group: [Sieve Brushes](#)

8 in diameter x 8 in deep

Standards

ASTM E11

Further Information

****NOT AVAILABLE FOR SALE IN THE USA****



Sieve Brush Brass and Nylon

Code: [79-7200](#)

Product Group: [Sieve Brushes](#)

Double-ended, brass and nylon bristle

Standards

ASTM E11

Further Information

****NOT AVAILABLE FOR SALE IN THE USA****



Sieve Brush Nylon

Code: [79-7210](#)

Product Group: [Sieve Brushes](#)

Nylon, double-ended

Standards

ASTM E11

Further Information

****NOT AVAILABLE FOR SALE IN THE USA****



Digital Pocket Thermometer

Code: [82-5420](#)

Product Group: [Digital Pocket Thermometer](#)

The stainless steel probe carries a highly accurate platinum sensor and when not in use folds back into the side of the instrument. With a clear 8 mm high LCD display this instrument is powered by a standard 12 V MN21 battery or equivalent.

Further Information

****NOT AVAILABLE FOR SALE IN THE USA****

Specification

Dimensions (l x w x h)	150 x 45 x 19 mm
Range	-49.9 to 199.9°C
Resolution	0.1°C
Accuracy	±0.4°C
Weight	105 g



Vacuum Pump

Code: [82-7720/01](#)

Product Group: [Vacuum Pumps](#)

Further Information

****NOT AVAILABLE FOR SALE IN THE USA****

Specification

Type	Single stage
Pump	Oil filled rotary
Ultimate vacuum	4 x 10 ⁻² mbar
Displacement	42 litres per minute (2.4 m ³ /hour)
Electrical supply	220 – 240 V AC, 50 - 60 Hz, 1 ph
Weight	12.7 kg



Vacuum Oil

Code: [82-7720/10](#)

Product Group: [Vacuum Pumps](#)

4 litres

Further Information

****NOT AVAILABLE FOR SALE IN THE USA****



Rubber Tubing

Code: [81-0375](#)

Product Group: [Vacuum Pumps, Rubber Tubing](#)

Further Information

****NOT AVAILABLE FOR SALE IN THE USA****



Support Assembly

Code: [81-0094](#)

Product Group: [Stand, Bosshead and Clamp](#)

Further Information

****NOT AVAILABLE FOR SALE IN THE USA****



Spatula 100 mm

Code: [81-0100](#)

Product Group: [Spatulas](#)

Further Information

****NOT AVAILABLE FOR SALE IN THE USA****



Spatula 150 mm

Code: [81-0120](#)

Product Group: [Spatulas](#)

Further Information

****NOT AVAILABLE FOR SALE IN THE USA****



Spatula 200 mm

Code: [81-0140](#)

Product Group: [Spatulas, Determination of Plastic Limit](#)

Further Information

****NOT AVAILABLE FOR SALE IN THE USA****



Chattaway Spatula 125 mm

Code: [81-0180](#)

Product Group: [Spatulas](#)

Further Information

****NOT AVAILABLE FOR SALE IN THE USA****



Aluminium Scoop Small

Code: [81-0200](#)

Product Group: [Scoops and Shovels](#)

82 x 127 x 50 mm, cast aluminium with handle

Further Information

****NOT AVAILABLE FOR SALE IN THE USA****



Aluminium Scoop Large

Code: [81-0220](#)

Product Group: [Slump Test, Scoops and Shovels](#)

Further Information

Not available for sale in the USA



Scoop - 250 mm long

Code: [81-0222](#)

Product Group: [Scoops and Shovels](#)

Further Information

****NOT AVAILABLE FOR SALE IN THE USA****



Vernier Caliper (LCD) Range 0 to 200mm X 0.01mm

Code: [81-0590](#)

Product Group: [Determination of the Shape Index,](#)
[Miscellaneous Laboratory Hardware](#)

Dual measuring range highly accurate vernier caliper 0 to 200mm x 0.01mm (8 inch x 0.001 inch) to comply with bs 887 and bs 6365. Complete with liquid crystal display.

Standards

EN 933-4

Further Information

****NOT AVAILABLE FOR SALE IN THE USA****



Heavy-duty Rubber Gloves

Code: [81-0500](#)

Product Group: [Miscellaneous Laboratory Hardware](#)

Further Information

****NOT AVAILABLE FOR SALE IN THE USA****



Chisel - Masonry Type

Code: [81-0594](#)

Product Group: [Miscellaneous Laboratory Hardware](#)

Further Information

****NOT AVAILABLE FOR SALE IN THE USA****



Wire Brush

Code: [81-0705](#)

Product Group: [Accessories for Concrete Moulds,](#)
[Miscellaneous Laboratory Hardware](#)

Further Information

****Not available for sale in the USA****



Straight Edge

Code: [81-0715](#)

Product Group: [Miscellaneous Laboratory Hardware](#)

Further Information

****NOT AVAILABLE FOR SALE IN THE USA****



Engineer's Steel Rule

Code: [81-0805](#)

Product Group: [Miscellaneous Laboratory Hardware](#)

Further Information

****NOT AVAILABLE FOR SALE IN THE USA****

Spares/Consumables



Consistency Plunger

Code: [38-2010/10](#)



Polythene Bag - Pack of 100

Code: [81-4765](#)

Product Group: [Miscellaneous Laboratory Hardware](#)

Further Information

****NOT AVAILABLE FOR SALE IN THE USA****



Polythene Bag - Pack of 50

Code: [81-4775](#)

Product Group: [Miscellaneous Laboratory Hardware](#)

Further Information

****NOT AVAILABLE FOR SALE IN THE USA****



Beaker - 500 ml

Code: [81-4779](#)

Product Group: [Beakers and Bowls](#)

Further Information

****NOT AVAILABLE FOR SALE IN THE USA****



Bowl - 2.5 litre

Code: [81-5020](#)

Product Group: [Beakers and Bowls](#)

Further Information

****NOT AVAILABLE FOR SALE IN THE USA****



Bowl - 5 litre

Code: [81-5040](#)

Product Group: [Beakers and Bowls](#)

Further Information

****NOT AVAILABLE FOR SALE IN THE USA****



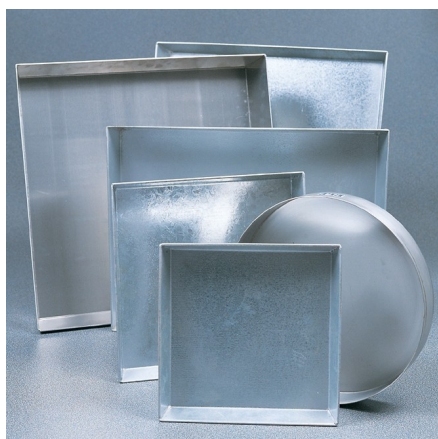
Moisture Content Tin

Code: [81-2979](#)

Product Group: [Moisture Content Tin and Sample Containers](#)

Further Information

****NOT AVAILABLE FOR SALE IN THE USA****



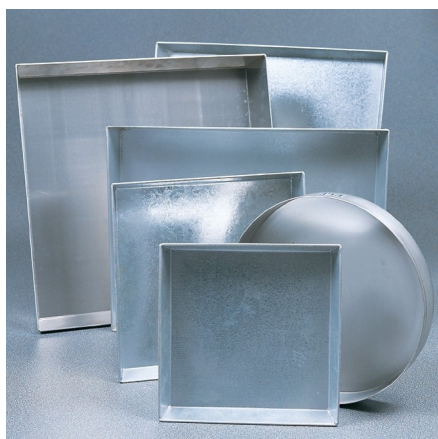
Sample Tray - 306 x 306 x 38 mm

Code: [81-4020](#)

Product Group: [Sample Trays](#)

Further Information

****NOT AVAILABLE FOR SALE IN THE USA****



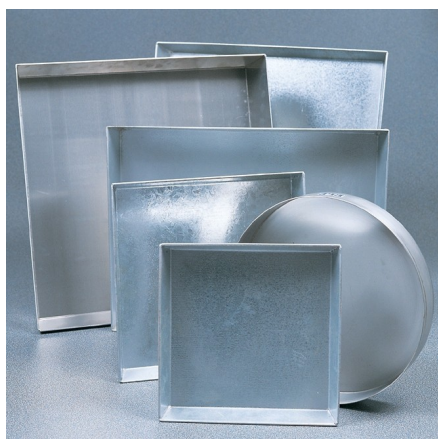
Sample Tray - 406 x 406 x 50 mm

Code: [81-4030](#)

Product Group: [Sample Trays](#)

Further Information

****NOT AVAILABLE FOR SALE IN THE USA****



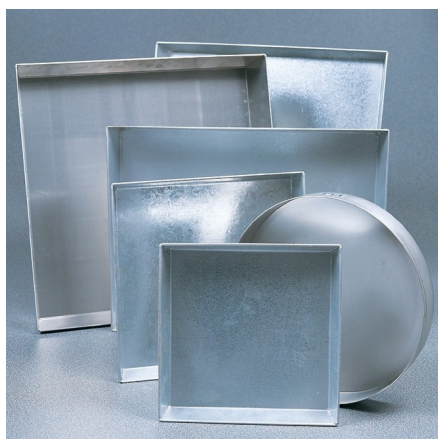
Sample Tray - 610 x 610 x 63 mm

Code: [81-4080](#)

Product Group: [Sample Trays](#)

Further Information

****NOT AVAILABLE FOR SALE IN THE USA****



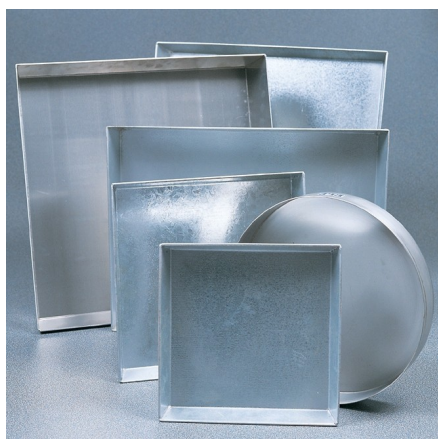
Sample Tray - 910 x 910 x 76 mm

Code: [81-4160](#)

Product Group: [Sample Trays](#)

Further Information

****NOT AVAILABLE FOR SALE IN THE USA****



Sample Tray - 1200 x 1160 x 50 mm

Code: [81-4230](#)

Product Group: [Sample Trays](#)

Further Information

****NOT AVAILABLE FOR SALE IN THE USA****



Wire Basket - 150 μ m wire mesh

Code: [81-4819](#)

Product Group: [Soundness of Aggregates, Wire Baskets](#)

Further Information

****NOT AVAILABLE FOR SALE IN THE USA****



Wire Basket - 1.18 mm wire mesh

Code: [81-4823](#)

Product Group: [Soundness of Aggregates, Wire Baskets](#)

Further Information

****NOT AVAILABLE FOR SALE IN THE USA****



Wire Basket - 3.35 mm wire mesh

Code: [81-4825](#)

Product Group: [Soundness of Aggregates, Wire Baskets](#)

Further Information

****NOT AVAILABLE FOR SALE IN THE USA****



Measuring Cylinder - Glass 100 ml

Code: [82-0380](#)

Product Group: [Measuring Cylinders, BS, Volumetric Shrinkage](#)

Soda glass, spouted, BS EN 4788.

Further Information

****NOT AVAILABLE FOR SALE IN THE USA****



Measuring Cylinder - Glass 250 ml

Code: [82-0420](#)

Product Group: [Measuring Cylinders, BS](#)

Soda glass, spouted, BS EN 4788.

Further Information

****NOT AVAILABLE FOR SALE IN THE USA****



Measuring Cylinder - Glass 500 ml

Code: [82-0460](#)

Product Group: [Measuring Cylinders, BS](#)

Soda glass, spouted, BS EN 4788.

Further Information

****NOT AVAILABLE FOR SALE IN THE USA****



Measuring Cylinder - Glass 1000 ml

Code: [82-0500](#)

Product Group: [Measuring Cylinders, BS](#)

Soda glass, spouted, BS EN 4788.

Further Information

****NOT AVAILABLE FOR SALE IN THE USA****



Measuring Cylinder - Plastic 100 ml

Code: [82-1840](#)

Product Group: [Measuring Cylinders, BS](#)

Plastic with spout, graduated to BS 5404.

Further Information

****NOT AVAILABLE FOR SALE IN THE USA****



Measuring Cylinder - Plastic 250 ml

Code: [82-1860](#)

Product Group: [Measuring Cylinders, BS](#)

Plastic with spout, graduated to BS 5404.

Further Information

****NOT AVAILABLE FOR SALE IN THE USA****



Measuring Cylinder - Plastic 1000 ml

Code: [82-1900](#)

Product Group: [Measuring Cylinders, BS](#)

Plastic with spout, graduated to BS 5404.

Further Information

****NOT AVAILABLE FOR SALE IN THE USA****



Glass Stirring Rod

Code: [82-4005](#)

Product Group: [Syringe and Stirring Rod](#)

7 mm diameter x 200 mm long. Pack of 10.

Further Information

****NOT AVAILABLE FOR SALE IN THE USA****



Syringe with Rubber Bulb.

Code: [82-2820](#)

Product Group: [Syringe and Stirring Rod, Setting Time by Penetration Resistance](#)

Further Information

****Not available for sale in the USA****



Volumetric Flask - 100 ml

Code: [82-1000](#)

Product Group: [Funnels and Flasks](#)

Soda glass, stoppered to BS ISO 1042 Class B.

Further Information

****NOT AVAILABLE FOR SALE IN THE USA****



Volumetric Flask - 250 ml

Code: [82-1020](#)

Product Group: [Funnels and Flasks](#)

Soda glass, stoppered to BS ISO 1042 Class B.

Further Information

****NOT AVAILABLE FOR SALE IN THE USA****



Volumetric Flask - 500 ml

Code: [82-1040](#)

Product Group: [Funnels and Flasks](#)

Soda glass, stoppered to BS ISO 1042 Class B.

Further Information

****NOT AVAILABLE FOR SALE IN THE USA****



Volumetric Flask - 1000 ml

Code: [82-1060](#)

Product Group: [Funnels and Flasks](#)

Soda glass, stoppered to BS ISO 1042 Class B.

Further Information

****NOT AVAILABLE FOR SALE IN THE USA****



Conical Flask (Erlenmeyer) - 500 ml

Code: [82-1120](#)

Product Group: [Funnels and Flasks](#)

Borosilicate glass, wide mouth graduated, 100 ml sub-divisions

Further Information

****NOT AVAILABLE FOR SALE IN THE USA****



Conical Flask (Erlenmeyer) - 250 ml

Code: [82-1140](#)

Product Group: [Funnels and Flasks](#)

Borosilicate glass, wide mouth graduated, 50 ml sub-divisions

Further Information

****NOT AVAILABLE FOR SALE IN THE USA****



Funnel

Code: [82-2660](#)

Product Group: [Funnels and Flasks](#)

Polythene, 200 mm diameter.

Further Information

****NOT AVAILABLE FOR SALE IN THE USA****



Evaporating Dish - 100 x 40 mm

Code: [82-1970](#)

Product Group: [Evaporating Dishes](#)

Shallow form with spout, porcelain 100 x 40 mm
nominal diameter x height.

Further Information

****NOT AVAILABLE FOR SALE IN THE USA****



Evaporating Dish - 150 x 45 mm

Code: [82-2000](#)

Product Group: [Evaporating Dishes, Volumetric Shrinkage](#)

Shallow form with spout, porcelain 150 x 45 mm nominal diameter x height.

Further Information

****NOT AVAILABLE FOR SALE IN THE USA****



Evaporating Dish - 200 x 55 mm

Code: [82-2010](#)

Product Group: [Evaporating Dishes](#)

Shallow form with spout, porcelain 200 x 55 mm
nominal diameter x height.

Further Information

****NOT AVAILABLE FOR SALE IN THE USA****



Polythene Bottle - 1 litre

Code: [82-3145](#)

Product Group: [Bottles and Crucibles](#)

Wide neck, screw cap.

Further Information

****NOT AVAILABLE FOR SALE IN THE USA****



Reagent Bottle

Code: [82-3060](#)

Product Group: [Bottles and Crucibles](#)

1000 ml, amber glass plastic stopper.

Further Information

****NOT AVAILABLE FOR SALE IN THE USA****



Weighing Bottle

Code: [82-1540](#)

Product Group: [Bottles and Crucibles](#)

Glass with stopper, 25 x 50 mm diameter x height.

Further Information

****NOT AVAILABLE FOR SALE IN THE USA****



Beaker Cover

Code: [82-0260](#)

Product Group: [Beakers and Covers](#)

Watch glass. Borosilicate glass, 100 mm dia.

Further Information

****NOT AVAILABLE FOR SALE IN THE USA****



Beaker - 100 ml

Code: [82-0120](#)

Product Group: [Beakers and Covers](#)

Borosilicate glass, squat form.

Further Information

****NOT AVAILABLE FOR SALE IN THE USA****



Beaker - 250 ml

Code: [82-0140](#)

Product Group: [Beakers and Covers](#)

Borosilicate glass, squat form.

Further Information

****NOT AVAILABLE FOR SALE IN THE USA****



Beaker - 600 ml

Code: [82-0200](#)

Product Group: [Beakers and Covers](#)

Borosilicate glass, squat form.

Further Information

****NOT AVAILABLE FOR SALE IN THE USA****



Beaker - 1000 ml

Code: [82-0220](#)

Product Group: [Beakers and Covers](#)

Borosilicate glass, squat form.

Further Information

****NOT AVAILABLE FOR SALE IN THE USA****



Dessicator - Vacuum

Code: [82-2170](#)

Product Group: [Dessicators](#)

280 mm internal diameter, soda glass. Supplied with perforated zinc disc and stopcock.

Further Information

****NOT AVAILABLE FOR SALE IN THE USA****



Dessicator - Non-vacuum

Code: [82-2100](#)

Product Group: [Dessicators](#)

200 mm internal diameter borosilicate glass. Supplied with perforated zinc disc.

Further Information

****NOT AVAILABLE FOR SALE IN THE USA****



Liquid Limit Device ASTM/ Aashto Hand-Operated W/ Revolution Counter. Supplied Less Grooving Tool.

Code: [24-0434](#)

Product Group: [Casagrande Method](#)

Complete with revolution counter. Supplied less grooving tool.

Standards

ASTM D4318, AASHTO T89



ASTM Metal Grooving Tool.

Code: [24-0453](#)

Product Group: [Casagrande Method](#)

Standards

ASTM D4318



Glass Plate.

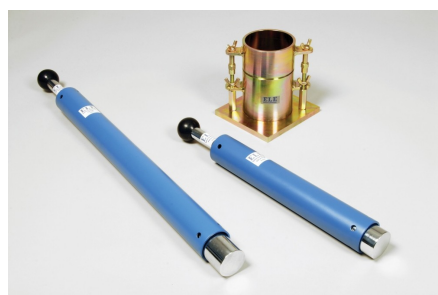
Code: [24-0430](#)

Product Group: [Casagrande Method, Determination of Plastic Limit](#)

500 mm square x 10 mm thick.

Standards

BS 1377, EN 1997-2



BS Standard Compaction Mould 1000Cm Capacity.

Code: 24-9000

Product Group: [Accessories for BS compaction and CBR, BS/EN compaction test 2.5kg](#)

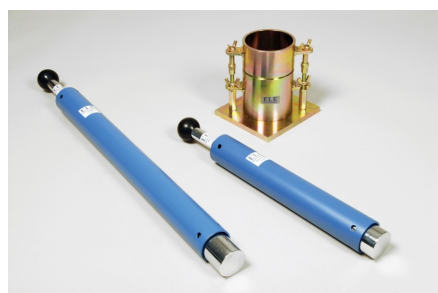
Plated steel standard compaction mould to BS 1377, comprising of a collar mould body and base plate with quick release wing nuts for easy dismantling.

Standards

BS 1377-4, BS 1924-2, EN 1997-2

Specification

Mould volume	1 litre
Dimensions	105 mm dia x 115.4 mm high
Construction	All steel, threaded studs with wing nuts, plated.
Weight	5.5 kg



Standard Compaction Rammer 2.5Kg BS1377-1975

Code: [24-9002](#)

Product Group: [BS/EN compaction test 2.5kg](#)

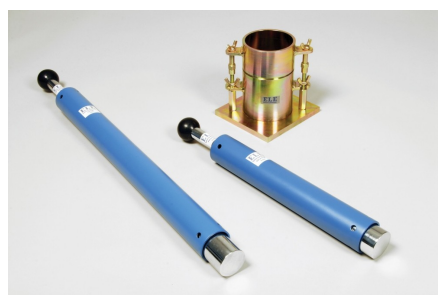
50mm diameter with 300mm drop, manufactured from corrosion protected steel.

Standards

BS 1377-4, BS 1924-2, EN 1997-2

Specification

Rammer	50 mm dia, 2.5 kg
Drop	300 mm
Guide Sleeve	Machined steel tubing with air pressure release holes
Finish	Corrosion resistant
Weight kg	4.2



Straight Edge 300mm.

Code: 24-9010

Product Group: BS/EN compaction test 4.5kg, Proctor compaction, Straightedge

300 mm

Standards

BS 1377-4, BS 1924-2, EN 1997-2, ASTM D698, ASTM D1557, AASHTO T99

Specification

Construction	Flat ground tool steel; beveled edge.
Dimensions	12 " l. x 1-1/4" w. x 1/8" thick (305 x 32 x 3 mm).
Weight	Net 9 oz. (255 g).



ASTM Compaction Mould 152mm.

Code: 24-9066

Product Group: Accessories for ASTM and Proctor compaction, ASTM/Modified Proctor compaction

152mm inside diameter

Standards

ASTM D698, ASTM D1557, AASHTO T99, AASHTO T180

Specification

Dimensions	152.4 mm dia x 116.4 mm high
Rammer Mould Volume	1/13.33 ft ³
Construction	All steel, threaded studs with wing nuts, plated.
Weight	8.2 kg



ASTM/Modified Proctor Compaction Rammer 4.5Kg.

Code: [24-9070](#)

Product Group: [ASTM/Modified Proctor compaction,](#)
[Modified Compaction Hammer](#)

50.8mm diameter x 457.2 mm drop.

Standards

ASTM D1557, AASHTO T180

Specification

Hammer	2" diam. (50.8 mm); 10 lbs. (4.5 kg).
Drop	18" (457.2 mm).
Guide Sleeve	Machined steel tubing with integrally spun end cap; air pressure release holes.
Finish	Corrosion resistant
Weight	Net 6.3 kg (14 lbs)



ASTM Cutting Collar.

Code: 24-9236

Product Group: [Cutting Edge, ASTM/AASHTO CBR mould accessories](#)

To fit ASTM CBR mould body, manufactured with a cutting edge to enable undisturbed samples to be taken in the field.

Standards

ASTM D1883, AASHTO T193

Specification

Dimensions	6" i.d. x 1-1/2" h. (152.4 x 38 mm).
Construction	Machined seamless steel tubing; recessed for mounting on CBR Mold.
Finish	Plated.
Weight	Net 1-1/2 lbs. (0.7 kg).



ASTM Spacing Disc.

Code: [24-9238](#)

Product Group: [Spacer Discs, ASTM/AASHTO CBR mould accessories](#)

150.8 mm diameter x 61.4 mm deep.

Specification

Construction

Steel; machined on all sides.

Finish

Plated.

Weights

Net 18.9 lbs. (8.6 kg).



Filter Screen 150mm Dia with 0.15mm Mesh.

Code: [24-9240](#)

Product Group: [Filter Screen, ASTM/AASHTO CBR mould accessories](#)

150 mm dia, 150 µm mesh for use with ASTM mould.

Specification

Mesh

Brass; number 100.

Size

5-15 /16" diam. (135 mm).

Weight

Net 1 oz. (28 g).



5Lb (2.27Kg) Split Surcharge Weight.

Code: [24-9244](#)

Product Group: [ASTM/AASHTO CBR mould accessories](#), [Surcharge Weights](#)

Specification

Construction

Machined steel.

Finish

Plated.



Filter Paper Equivalent to Whatman No 5 150mm Dia Box of 100.

Code: [24-9250](#)

Product Group: [Filter Paper, ASTM/AASHTO CBR
mould accessories](#)

Box of 100.

Standards

ASTM D1883, AASHTO T193

Specification

Grade	Coarse.
Size	15 cm diam. (5.9â€³).
Weight	Net 8 oz. (22 7 g).



BS Cbr Mould Body.

Code: [24-9198](#)

Product Group: [Accessories for BS compaction and CBR, BS EN CBR mould](#)

Standards

BS 1377, BS 1924, EN 13286-4, EN 1997-2

Specification

Mould	152 x 127 mm (inside diameter x height)
Collar	51 mm height, fits both ends of mould
Base plate	Solid, fits both ends of mould
Construction	All steel, plated
Weight kg	7.3



Swell Stand

Code: [24-9262](#)

Product Group: [Expansion \(swell\) Test Equipment, Tripod Attachment](#)

For mounting Swell Dial Gauge in position on CBR mould collar.

Standards

ASTM D1883, AASHTO T193

Further Information

Requires dial indicator; not included, order separately

Specification

Construction	Machined, one-piece cast aluminum.
Contact Head	Integral part of ssembly; holds dial indicator.
Construction	2" I. (50.8 mm) included.
Weight	Net 1 lb. (0.4 kg).

Spares/Consumables



Dial Indicator - 1.0" Range

Code: [88-4100](#)



Penetration/Swell Dial Gauge ASTM.

Code: [24-9184](#)

Product Group: [Expansion \(swell\) Test Equipment](#),
[In-situ CBR](#), [Conversion of In-situ to Laboratory CBR](#),
[Penetration Measurement](#)

1 in travel x 0.0005 in divisions. Complete with rack extensions and chisel edge anvil.

Standards

BS 1377, BS 1924



Large Capacity Sample Splitter.

Code: 23-3425

Product Group: Large Capacity Sample Splitter, Large Sample Splitter

The splitter is designed for the reduction of test samples which are too large in volume to be conveniently handled. It divides samples so that half is representative of the original total sample and handles material up to 6 inches in particle size.

The lever-actuated unit is constructed of heavy gauge welded steel with a hopper which holds up to 1 cuft. The single splitter chute provides wide flexibility in sizes of opening and adjustment is provided for chutes of 0.5, 1.5, 2, 3, 4 or 6 inch by positioning of the chute bars. Overall height is approximately 1 meter. Hopper size 735 mm long x 480 mm wide (approx).

Further Information

Complete with 2 material pans and a bag-loading chute.

Specification

Capacity	1 cu. ft. (0.028 m3); for sand sizes up to 4" (102 mm).
Hopper	Lever-actuated, clamshell design.
Chute Bars	48 aluminum bars, 1/2" (13 mm) width.
Chute Area	24 " (610 mm) overall width.
Chute Openings	Adjustable; 1/2", 1", 1-1/2", 2", 3", 4", or 6".
Frame	Welded, heavy-gage steel.
Chute Attachment	Replaces pan to allow sample collection in bag; 28-1/4" l. x 7"w. x 5-1/2" h. (718 x 178 x 140 mm).
Material Pans	Two included; 25 -3/4" l. x 9" w. x 6-1/2" h. (654 x 229 x 165 mm).
Overall Dimensions	29" l. x 19" w. x 39" h. (737 x 483 x 999 mm).
Weight	Shpg. 142 lbs. (64 kg).