



IF IT'S WORTH BUILDING, IT'S WORTH TESTING

This wishlist was generated on 10/08/2016, and contains the following Products:

38-0200/01

ELE Flame Photometer

38-0320/01

Air Compressor

38-0270

Regulators for Natural Gas

485-031/01

**Uv/Vis Spectrophotometer with 100 Plastic Cuvettes 10X10mm Cell Holder
Instructions & Mains Lead**

82-8500/01

Water Bath - 12 litres

24-2854/01

**Mechanical End-Over-End Shaker Ce with Friction Safety Device and Control
Panel 220-240V 50Hz 1Ph.**

80-0200/01

ELE Sieve Shaker

42-1000/01

**Buoyancy Balance 6Kg X 0.1G. Supplied with Support Frame Water Tank &
Suspension Hook.**

42-1005

**Wire Basket Brass with Handle Nominal 6000Cm³ Capacity with 1.7mm Wire
Mesh.**

82-0460

Measuring Cylinder - Glass 500 ml

82-3320

Porcelain Crucible

81-0100

Spatula 100 mm

82-2660

Funnel

81-0220

Aluminium Scoop Large

520-260

Large Current Flow Meter Wading Set for Velocities 0.03 to 10 M/S.

23-7462

Speedy Moisture Tester G2 Large 0-50% Moisture Range. Supplied Less Calcium Carbide

24-4650

Soil Hydrometer Type 151H ASTM D422 Graduated 0.995 to 1.038 Specific Gravity.

34-2800

Bulk Density Measure 30 Litre

38-3005

Le Chatelier Mould

38-3200

Extensibility of Mould Apparatus BS

38-3205

Extensibility of Mould Apparatus EN

38-1200

Le Chatelier Flask

38-2015/01

Automatic Vicat Apparatus

38-2015/12

Needle Cleaning Device

38-2015/14

Printer Paper Rolls

38-2015/15

Mould Tank

38-2015/16

Consistency Plunger

78-1250/01

225 Litre Drying Oven

34-4570

150mm Cube Mould 4-Part Clamp Type. Cast Iron Construction. BS EN Compliant.

34-5230

150mm Dia Cylinder Mould 150mm Long.

78-7140

Triple Beam Balance

78-7600

Heavy-duty Solution Balance

47-0011

Calibrated Spring Balance

78-5335/01

Electronic Balance - 250 g x 0.1 mg

38-2010

Vicat Frame

82-5248

Portable Thermometer 0 - +250°C

34-0300/01

Vibro Consistometer

82-5420

Digital Pocket Thermometer

82-0380

Measuring Cylinder - Glass 100 ml

34-5053

150 X 150 X 750mm Beam Mould.

42-4500

75mm Aggregate Crushing Value Apparatus. Supplied Complete with Metal Measure and Tamping Rod.

36-3280/01

ADR Touch 2000 BS EN Compression Machine with Digital Readout and Self Centring Platens.

37-5170

EN 12390-3/4 Distance Piece - 80 mm Depth

37-5180

EN 12390-3/4 Distance Piece - 100 mm Depth

37-6130

100kN Flexural (Beams) Frame. Supplied Without Specimen Bearers and Fitting Kit.

37-6138

100kN Flexural Fitting Kit (ADR) Used for Connecting Flexural Frames to ADR Compression Machines.

37-6131

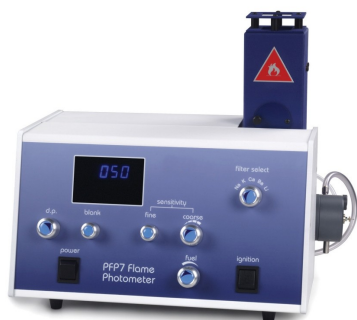
BS 1881 Specimen Bearer Assembly 38mm Dia X 160mm Length.

37-6133

Ball Seating Assembly 150mm Dia Platens.

35-1480

Standard Concrete Test Hammer



ELE Flame Photometer

Code: 38-0200/01

Product Group: ELE Flame Photometer

Special Note: The Flame Photometer requires a source of moisture-free air at 6 litres/minute at a pressure of 1 kg/cm². It also requires a fuel source for the flame and a regulator (see accessories).

Standards

EN 196-21, ASTM C114, TEST 17

Further Information

NOT AVAILABLE FOR SALE IN THE USA

For 220-240 V AC, 50-60 Hz, 1 ph

Specification

Dimensions (l x w x h)	420 x 360 x 300 mm
Readout	LED three 12.5 mm digits
Sensitivity Na	3 to 100 ppm
K	3 to 100 ppm
Ca	5 to 100 ppm (optional filter)
Reproducibility	1% CV for 20 consecutive samples using 10 ppm, set to read 100
Recorder Output	Nominal 1.00 V for a reading of 100.0
Weight	8 kg



Air Compressor

Code: [38-0320/01](#)

Product Group: [ELE Flame Photometer](#)

Supplies air at 6 litres/minute at a pressure of 1 kg/cm², for use with 38-0200/01 Flame Photometer.

Standards

EN 196-21, ASTM C114, TEST 17

Further Information

****NOT AVAILABLE FOR SALE IN THE USA****



Regulators for Natural Gas

Code: [38-0270](#)

Product Group: [ELE Flame Photometer](#)

Standards

EN 196-21, ASTM C114, TEST 17

Further Information

****NOT AVAILABLE FOR SALE IN THE USA****



Uv/Vis Spectrophotometer with 100 Plastic Cuvettes 10X10mm Cell Holder Instructions & Mains Lead

Code: [485-031/01](#)

Product Group: [General laboratory instrumentation](#)

Spares/Consumables



Spare Xenon lamp module

Code: [485-031/10](#)



Water Bath - 12 litres

Code: [82-8500/01](#)

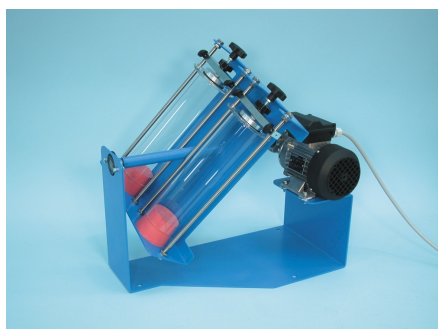
Product Group: [Water Baths](#)

Further Information

****NOT AVAILABLE FOR SALE IN THE USA****

Specification

Capacity	12 litres
Working area	210 x 300 mm
Tray	Yes
Max Water Depth	130 mm
Controller	Digital
Temperature range and stability °C	0 to 99.9 ± 0.1
Electrical supply	220 – 240 V AC, 50 - 60 Hz, 1 ph
Rated power kW	1.5
Weight	8.1 kg



Mechanical End-Over-End Shaker Ce with Friction Safety Device and Control Panel 220-240V 50Hz 1Ph.

Code: [24-2854/01](#)

Product Group: [Gas Jar Method](#)

Fitted with friction safety device, capable of rotating two EL24-2830 Gas Jars at approximately 50 rpm to satisfy BS 1377.

Standards

BS 1377, EN 1997-2



ELE Sieve Shaker

Code: 80-0200/01

Product Group: ELE Sieve Shaker

The ELE sieve shaker is powered by an electromagnetic drive that has no rotating parts to wear making it maintenance free and extremely quiet in operation.

The unit features a triple Vertical-Lateral-Rotary vibrating action that moves the sample over the sieve producing faster more efficient sieving, while the rapid vertical movements also help keep the apertures from blinding.

The shaker is ideal for laboratory or on site use. It is robust, compact and sufficiently lightweight to be portable. The separate digital microprocessor controlled console unit incorporates a keypad for setting the sieving program and is isolated from any effects of vibration from the shaker.

As standard the shaker includes, timer 0-999 minutes, adjustable vibration intensity and adjustable intermittent or continuous operation.

Further Information

****NOT AVAILABLE FOR SALE IN THE USA****

The unit accepts up to ten 200 mm or 8 inch, full height, diameter sieves and lid and receiver, or up to six 300 mm or 12 inch diameter sieves and lid and receiver. Complete as specified. Dimensions (l x w x h) 380 x 440 x 1085 mm. For 220 - 240 V AC, 50 Hz 1ph.



Buoyancy Balance 6Kg X 0.1G. Supplied with Support Frame Water Tank & Suspension Hook.

Code: [42-1000/01](#)

Product Group: [Particle Density \(specific gravity\) and Water Absorption for Coarse Aggregates](#)

The buoyancy balance system developed by ELE consists of a rigid support frame, incorporating a water tank mounted on a platform. A mechanical lifting device is used to raise the water tank through the frame height immersing the specimen suspended below the balance. The balance supplied may also be used as a standard weighing device, thus providing a versatile and comprehensive weighing system in the laboratory. 6000 g x 0.1 g supplied with frame, water tank and suspension hook.

Standards

EN 1097-6, EN 12697-6, BS 812, ASTM C127, AASHTO T85

Further Information

****NOT AVAILABLE FOR SALE IN THE USA****

For 220 - 240 V AC, 50 - 60 Hz, 1 ph.



Wire Basket Brass with Handle Nominal 6000Cm³ Capacity with 1.7mm Wire Mesh.

Code: 42-1005

Product Group: [Particle Density \(specific gravity\) and
Water Absorption for Coarse Aggregates](#)

For BS 812 Relative Density. 200 mm diameter x 190
mm deep, 1.70 mm wire mesh.

Standards

EN 1097-6, EN 12697-6, BS 812, ASTM C127, AASHTO T85

Further Information

****NOT AVAILABLE FOR SALE IN THE USA****



Measuring Cylinder - Glass 500 ml

Code: [82-0460](#)

Product Group: [Measuring Cylinders, BS](#)

Soda glass, spouted, BS EN 4788.

Further Information

****NOT AVAILABLE FOR SALE IN THE USA****



Porcelain Crucible

Code: [82-3320](#)

Product Group: [Bottles and Crucibles,](#)
[Loss-on-Ignition](#)

30ml capacity complete with lid.

Further Information

****NOT AVAILABLE FOR SALE IN THE USA****



Spatula 100 mm

Code: [81-0100](#)

Product Group: [Spatulas](#)

Further Information

****NOT AVAILABLE FOR SALE IN THE USA****



Funnel

Code: [82-2660](#)

Product Group: [Funnels and Flasks](#)

Polythene, 200 mm diameter.

Further Information

****NOT AVAILABLE FOR SALE IN THE USA****



Aluminium Scoop Large

Code: [81-0220](#)

Product Group: [Slump Test, Scoops and Shovels](#)

Further Information

****Not available for sale in the USA****



Large Current Flow Meter Wading Set for Velocities 0.03 to 10 M/S.

Code: [520-260](#)

Product Group: [Flow meters](#)

Consisting of current meter, revolution counter, wading rods, base and knob, 3 metres wading cable. All packed into carrying case.

Further Information

Case dimensions: 850 x 180 x 220 mm



Speedy Moisture Tester G2 Large 0-50% Moisture Range. Supplied Less Calcium Carbide

Code: [23-7462](#)

Product Group: [Rapid method by Speedy Moisture Tester](#), [Rapid method by Speedy Moisture Tester](#)

Uses a technique based on the fact that water will react with calcium carbide to form a gas and that the quantity of gas formed is directly proportional to the water present. The gas pressure is indicated on a built-in pressure gauge. The pressure gauge calibrated in percentage of moisture. Has a moisture range of 0-50% with gauge divisions every 0.5%. Holds a sample size of 8 g. Includes an electronic balance of 200 g capacity x 0.1 g readability and is supplied in plastic carrying case.

Standards

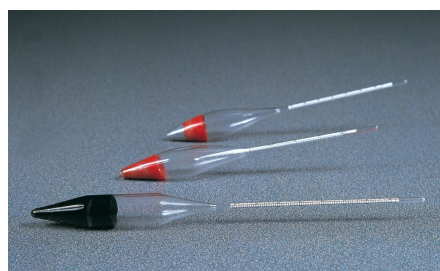
ASTM D4944, AASHTO T217

Further Information

****NOT AVAILABLE FOR SALE IN THE USA****

Specification

Model	G2 Large
Moisture Range	0 to 50%
Gauge divisions	0.50%
Sample weight g	8
Weight complete kg	7.5



Soil Hydrometer Type 151H ASTM D422 Graduated 0.995 to 1.038 Specific Gravity.

Code: [24-4650](#)

Product Group: [ASTM Soil Hydrometers, Soil Hydrometers](#)

Graduated 0.995 to 1.038 g/ml.

Standards

ASTM D422, ASTM E100, AASHTO T88

Specification

Construction	Molded, seamless.
Scale	Bouyoucos; double scale.
Calibration	At 68°F.
Weight	Net 4 oz. (113 g).



Bulk Density Measure 30 Litre

Code: [34-2800](#)

Product Group: [Bulk Density Measures, Fresh Concrete](#) - [Bulk Density Measures](#)

Manufactured from heavy gauge steel these bulk density measures comply with the requirements of either BS 812, EN 1097-3, 12350-6 or ASTM C138. All measures incorporate carrying handles as standard.

Standards

BS 812, EN 1097-3, EN 12350-6, ASTM C138

Further Information

****NOT AVAILABLE FOR SALE IN THE USA****

For other bulk density measures see the aggregates section



Le Chatelier Mould

Code: 38-3005

Product Group: General Expansion of Dry Hydrated Lime by the Le Chatelier Method, Soundness of Cement Paste by the Le Chatelier Method, Soundness

Comprising a split cylinder fitted with two indicator stems. The mould is supplied complete with two glass plates and a weight 100 g \pm 10 g. Three moulds required for each test.

Standards

BS 6463, EN 196-3, EN 459-2

Further Information

****NOT AVAILABLE FOR SALE IN THE USA****



Extensibility of Mould Apparatus BS

Code: 38-3200

Product Group: General Expansion of Dry Hydrated Lime by the Le Chatelier Method

Conforms to BS 6463. The unit comprises a metal sleeve with a hook and set screw to fit over one of the mould pointers, and a clamp to fit onto the other pointer of the mould. Supplied complete with one weight 100 g \pm 1 g.

Standards

EN 196-3

Further Information

NOT AVAILABLE FOR SALE IN THE USA



Extensibility of Mould Apparatus EN

Code: 38-3205

Product Group: General Expansion of Dry Hydrated Lime by the Le Chatelier Method

Conforms to EN196-3, 459-2. The unit comprises a metal sleeve with a hook and set screw to fit over one of the mould pointers, and a clamp to fit onto the other pointer of the mould. Supplied complete with one weight 300 g \pm 1 g.

Standards

EN 196-3

Further Information

****NOT AVAILABLE FOR SALE IN THE USA****



Le Chatelier Flask

Code: 38-1200

Product Group: Specific Gravity (relative density) of Hydration Cement, Le Chatelier Flask

For determining the density of hydraulic cement and lime, supplied complete with calibration certificate. Capacity 250ml. Graduated from 0 to 1ml and from 18 to 24ml graduations. Accurate to 0.05ml.

Standards

EN 196-6, ASTM C128, ASTM C188, E 694, AASHTO T133

Specification

Graduations

Zero mark represents 250 ml, the capacity of the large bulb; neck graduations from 0-1 ml in 0.1 ml divisions with two extra 0.1 ml graduations above the 1.0 and below the 0 marks; bulb portion of neck holds 17 ml; top portion of neck graduated from 18-24 ml in 0.1 ml divisions; 24 ml capacity.

Stopper

Ground glass.

Weight

Net 8 oz. (227 g).



Automatic Vicat Apparatus

Code: 38-2015/01

Product Group: Automatic Vicat

Complete with EN and ASTM Initial and Final needles, Consistency Plunger, Windows(R) software and RS232 cable, 1 x EN and ASTM Mould and Glass Plate. Suitable for continuous use in saturated humidity, at a controlled temperature of $20^{\circ}\text{C} \pm 1^{\circ}\text{C}$.

Standards

ASTM C187, ASTM C191

Further Information

****NOT AVAILABLE FOR SALE IN THE USA****

For 220 - 240 V AC, 50 - 60 Hz, 1 ph.

Spares/Consumables



ASTM Initial and Final Set Needle

Code: 38-2023



Consistency Plunger

Code: 38-2015/16



EN Initial and Final Set Needle

Code: 38-2021



Needle Cleaning Device

Code: [38-2015/12](#)

Product Group: [Automatic Vicat](#)

Accessory.

Standards

ASTM C187, ASTM C191

Further Information

****NOT AVAILABLE FOR SALE IN THE USA****



Printer Paper Rolls

Code: [38-2015/14](#)

Product Group: [Automatic Vicat](#)

Accessory: pack of 10.

Standards

ASTM C187, ASTM C191

Further Information

****NOT AVAILABLE FOR SALE IN THE USA****



Mould Tank

Code: [38-2015/15](#)

Product Group: [Automatic Vicat](#)

Accessory: for testing samples under water as per EN 196-3, for use in temperature controlled laboratories.

Standards

ASTM C187, ASTM C191

Further Information

****NOT AVAILABLE FOR SALE IN THE USA****



Consistency Plunger

Code: [38-2015/16](#)

Product Group: [Automatic Vicat](#)

Spare.

Standards

ASTM C187, ASTM C191

Further Information

****NOT AVAILABLE FOR SALE IN THE USA****



225 Litre Drying Oven

Code: 78-1250/01

Product Group: Percentage Refusal Density (PRD),
Oven Drying Method, Oven Drying Method, Oven
Drying Method

Standards

EN 12697-32, EN 13280-4, BS 598-104, BS 1377

Specification

Capacity	225 litres
External Dimensions (l x w x h)	540 x 1040 x 940
Internal Dimensions (l x w x h)	440 x 920 x 600
Fluctuation	± 0.75°C
Rated power heater elements	2000 W
Shelves supplied	3
Shelf positions	4
Weight	80 kg



150mm Cube Mould 4-Part Clamp Type. Cast Iron Construction. BS EN Compliant.

Code: [34-4570](#)

Product Group: [Cube Moulds](#), [Cube Moulds](#)

4-part with clamp attached base plate.

Specification

Construction

Bolted sides and clamped base plate

Finish

Painted

Weight

42 lb (19.1 kg)



150mm Dia Cylinder Mould 150mm Long.

Code: [34-5230](#)

Product Group: [Cylinder Moulds](#)

150 mm diameter x 150 mm long, complete with base plate.

Further Information

****NOT AVAILABLE FOR SALE IN THE USA****



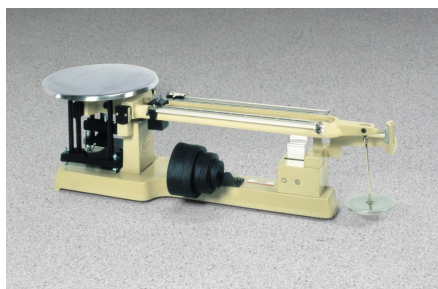
Triple Beam Balance

Code: 78-7140

Product Group: Triple Beam Scales, Vapor Emission Test Kit, Mechanical Balances

Specification

Capacity	2610 g
Resolution	0.1 g
Pan size (diameter)	150 mm
Overall dimensions (l x w x h)	470 x 180 x 150 mm
Weight	3.2 kg
Capacity	2,610 g.
Readability	0.1 g.
Platform	Stainless steel plate; 6" (152 mm) diam. except for scale with scoop models.
Damping	Magnetic.
Attachment Weights	One 500 g; two 1,000 g (included).
Dimensions	18" w. x 6" d. x 7" h. (457 x 152 x 178 mm).
Weights	Net 8 to 10 lbs. (3.6 to 4.5 kg).



Heavy-duty Solution Balance

Code: 78-7600

Product Group: Mechanical Balances, Heavy-Duty Solution Balance

Further Information

Not available for sale in the USA

Specification

Capacity	20,000 g
Resolution	1.0 g
Pan size (diameter)	280 mm
Overall dimensions (l x w x h)	279 x 864 x 279 mm
Weight	20.0 kg
Capacity	20 kg.
Readability	1 g.
Beams	1,000 x 100 g; 100 x 1 g; two sliding weights.
Tare	2,270 g.
Platform	Stainless steel plate; 11 " (279 mm) diam.
Damping	Magnetic.
Attachment Weights	Slotted ratio type; one 1,000 g; two 2,000 g; one 5,000 g; one 10,000 g (included).
Overall Dimensions	34 " w. x 11 " d. x 11 " h. (864 x 279 x 279 mm).
Weight	Net 44 lbs. (19.9 kg).



Calibrated Spring Balance

Code: [47-0011](#)

Product Group: [Rate of Spread of Coated Chippings](#)

Standards

EN 12272-1, BS 598-108

Further Information

****NOT AVAILABLE FOR SALE IN THE USA****



Electronic Balance - 250 g x 0.1 mg

Code: [78-5335/01](#)

Product Group: [Electronic Balances](#)

Further Information

****Not available for sale in the USA****

Specification

Capacity resolution	250 g x 0.1 mg
Pan size	100 mm dia
Mains and battery	No
Dimensions (l x w x h)	470 x 185 x 280 mm
Weight	12 kg



Vicat Frame

Code: [38-2010](#)

Product Group: [Vicat Method](#)

Complete with consistency plunger, 10 mm diameter.
Requires one initial or final set needle to make up test weight to 300g.

Standards

EN 196-3, EN 13454-2, ASTM C187, ASTM C191

Further Information

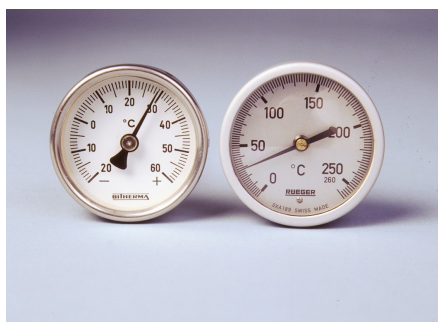
NOT AVAILABLE FOR SALE IN THE USA

Spares/Consumables



Consistency Plunger

Code: [38-2010/10](#)



Portable Thermometer 0 - +250°C

Code: [82-5248](#)

Product Group: [Portable Dial-type Thermometers](#)

Complies with BS 598 for temperature measurement of bituminous mixes prior to and during laying. Graduated in 2°C divisions with a stem length of 300 mm and accurate to $\pm 2^\circ\text{C}$.

Further Information

****NOT AVAILABLE FOR SALE IN THE USA****



Vibro Consistometer

Code: [34-0300/01](#)

Product Group: [Vebe Time](#)

Comprising of vibrating table, container, slump cone, graduated rod and plate. For 220 - 240 V AC, 50 Hz, 1 ph.

Further Information

****NOT AVAILABLE FOR SALE IN THE USA****



Digital Pocket Thermometer

Code: [82-5420](#)

Product Group: [Digital Pocket Thermometer](#)

The stainless steel probe carries a highly accurate platinum sensor and when not in use folds back into the side of the instrument. With a clear 8 mm high LCD display this instrument is powered by a standard 12 V MN21 battery or equivalent.

Further Information

****NOT AVAILABLE FOR SALE IN THE USA****

Specification

Dimensions (l x w x h)	150 x 45 x 19 mm
Range	-49.9 to 199.9°C
Resolution	0.1°C
Accuracy	±0.4°C
Weight	105 g



Measuring Cylinder - Glass 100 ml

Code: [82-0380](#)

Product Group: [Measuring Cylinders, BS, Volumetric Shrinkage](#)

Soda glass, spouted, BS EN 4788.

Further Information

****NOT AVAILABLE FOR SALE IN THE USA****



150 X 150 X 750mm Beam Mould.

Code: [34-5053](#)

Product Group: [Beam Moulds](#)

Complete with base plate

Further Information

****NOT AVAILABLE FOR SALE IN THE USA****



75mm Aggregate Crushing Value Apparatus. Supplied Complete with Metal Measure and Tamping Rod.

Code: 42-4500

Product Group: [Aggregate Crushing Value \(ACV\) and Ten Percent Fines Value \(TFV\)](#)

Comprising of 75 mm nominal diameter steel cylinder, plunger and base plate supplied complete with metal measure and tamping rod.

Further Information

****NOT AVAILABLE FOR SALE IN THE USA****



ADR Touch 2000 BS EN Compression Machine with Digital Readout and Self Centring Platens.

Code: 36-3280/01

Product Group: BS EN Compression Machines

The ADR Touch range of 2000 kN and 3000 kN capacity compression machines has been designed to meet the need for reliable and consistent testing. The load frame is a welded steel fabrication carrying the ball-seated upper platen. Positively located on the loading ram, which is protected from debris by a flexible cover, the lower platen is marked for the centring of cube and cylinder specimens. Self-centring lower platens for cube location are supplied as standard on EN machines and are available as an optional extra on the standard machine. The two machines for cube testing to EN standards are assembled and aligned using a special compression frame stability tester.

The dimensions of the frame allow the testing of concrete cylinders up to 320 mm long x 160 mm diameter, 150 and 100 mm square cubes, and on EN/BS machines, 200 mm square cubes. Kerbs and flagstones may also be tested on ADR machines as well as 150 mm and 100 mm square section beams to ASTM C78 using the optional 100 kN flexural frames which are connected to the power pack.

Standards

EN 12350-6, NF P18-411

Further Information

****Not available for sale in the USA****

ADR Touch BS EN 2000 and 3000 kN compression machines are supplied complete with self-centring lower platen and safety gates fitted with interlock switches ready for testing 300 x 150 mm diameter cylinders.

Whilst delivering all the features and reputation of the established ADR Series with its extensive design history, the new and improved user interface provides a high quality platform for testing that enhances the performance of ELE's compression machines.

New, sophisticated electronics further the benefits of simplified operation, whilst delivering the highest levels of accuracy in testing concrete and cement/mortar samples, satisfying the needs of Quality Control Managers, Lab Managers and Technicians.

ACCURACY & SAVINGS

The new ADR Touch Series, with 145mm (5.7") high resolution QVGA touch screen interface and intuitive menu-driven operation, reduces the time taken to set up the machine and perform tests, reducing the time to train staff by up to 25%.

- Up to 6 sample types can be set as favorites, enabling one-touch set up for repeat testing.
- Full, QWERTY touch pad for input of test data.

Most testing errors produce lower strength results. Noncompliant loading rates can generate errors in measured strength. The user interface includes real-time display of load vs. time, further ensuring accurate and consistent test results and providing "goodness of test" data to improve traceability in your QC operations.

TRACEABILITY & DATA QUALITY

The ADR range now provides improved data quality and traceability in due diligence cases - it is now possible to demonstrate traceability all the way from the machine/user to the accreditation body, increasing your reputation and peace of mind - all test results now come complete with the machine serial number attached.

- Enhanced USB data communications between PC and machine - eliminating the need for download software.
- Two gigabytes of storage memory.
- Full customization of sample sizes - stress calculations are automatically recalculated.

USER SAFETY

With full safety gates as standard, total systems diagnostics, ram run-out switches and overload warnings ensure the safety of your employees and the reliability of your machine.

Specification

Testing Standards	BS EN 12390-4, BS EN 12390-3, BS EN 12390-4, BS EN 12390-5, EN 12504-1, EN 1354, EN 1521, EN 3161, EN 1338, EN 772-6, EN 13286-41, BS 3892-3, BS 187, BS 6717, BS EN ISO 7500-1, ASTM E4
Capacity	2000 kN
Cubes (Concrete)	Up to 200 mm
Cylinders (Concrete)	Up to 160 x 320 mm
Blocks	Via optional Platen Handling System
Flexural Testing	Via Flexural Frame
TFV and ACV	Yes
Voltage Supply	220-240V 50/60 Hz 1Ph.
Frame Class (Stability)	Tested
Frame Type	Welded
Max vert. Clearance	340 mm
Max hor. Clearance	355 mm
Platen Sizes	Lower 220mm sq, Upper 300mm dia
Max Ram Travel	50 mm

Spares/Consumables



Pressure transducer, 0-700bar, 0.05 to 10v DC Output

Code: [6014A0062](#)



EN 12390-3/4 Distance Piece - 80 mm Depth

Code: [37-5170](#)

Product Group: [Distance Pieces](#)

Further Information

****Not available for sale in the USA****



EN 12390-3/4 Distance Piece - 100 mm Depth

Code: [37-5180](#)

Product Group: [Distance Pieces](#)

Further Information

****Not available for sale in the USA****



100kN Flexural (Beams) Frame. Supplied Without Specimen Bearers and Fitting Kit.

Code: 37-6130

Product Group: [Flexural Testing for Beams](#)

- Open sided for ease of specimen loading
- Meets EN 12390-5, 1521, 13161, 772-6 and ASTM C78 for standard section beams
- Optional ball seating assembly

This rigidly constructed, open sided frame is suitable for testing 100 mm and 150 mm square-section beams. The frame supports a hydraulic ram and upper sub-platen assembly incorporating a spherical seating. The upper and lower sub-platens will accept various specimen loading bearers, which are supplied separately.

Further Information

Not available for sale in the USA



100kN Flexural Fitting Kit (ADR) Used for Connecting Flexural Frames to ADR Compression Machines.

Code: [37-6138](#)

Product Group: [Accessories to connect ELE compression machines to the flexural/transverse frames](#)

These flexural frames can be used with a wide range of ELE compression machines. Simply select one of two fitting kits designed to link the flexural frame to either the ADR-Auto range of compression machines or any other ADR compression machine.

Further Information

Not available for sale in the USA



BS 1881 Specimen Bearer Assembly 38mm Dia X 160mm Length.

Code: [37-6131](#)

Product Group: [Flexural Testing for Beams](#)

Comprising 2 self-aligning upper bearers, 1 self-aligning and 1 fixed lower bearer. Roller bearers are 38 mm diameter x 160 mm long. Suitable for 3- or 4-point flexural testing of beams.

[Further Information](#)

****Not available for sale in the USA****



Ball Seating Assembly 150mm Dia Platens.

Code: [37-6133](#)

Product Group: [Flexural Testing for Beams](#)

Comprising a ball seating assembly with 150 mm diameter platen and a lower platen 150 mm diameter x 16 mm thick. Suitable for testing low-strength specimens.

Further Information

****Not available for sale in the USA****



Standard Concrete Test Hammer

Code: 35-1480
Product Group: Concrete Test Hammer, Surface Hardness

The hammer is intended for testing the quality of concrete in finished structures such as buildings and bridges. Supplied complete with carrying case and carborundum stone, the hammer is suitable for testing concrete with compressive strengths of 10 to 70 N/mm2.

Standards

ASTM C805

Specification

Body	Includes indicator scale, calibration curves.
Calibration Curves	Rebound number vs. compressive strength.
Rubbing Stone	Prepares test surface.
Accuracy	Within 15 %.
Carrying Case	Plastic.
Weight	Net 3 lbs. (1.4 kg).

Spares/Consumables



Rubbing Stone

Code: 35-1475/10