



IF IT'S WORTH BUILDING, IT'S WORTH TESTING

This wishlist was generated on 24/08/2016, and contains the following Products:

---

36-3320/01

**ADR Touch 3000 BS EN Compression Machine with Digital Readout and Self Centring Platens.**

---

37-5110

**EN 12390-3/4 Distance Piece - 20 mm Depth**

---

37-5120

**EN 12390-3/4 Distance Piece - 50 mm Depth**

---

37-5170

**EN 12390-3/4 Distance Piece - 80 mm Depth**

---

37-5180

**EN 12390-3/4 Distance Piece - 100 mm Depth**

---

34-0192

**Slump Test Set BS & ASTM. C/W Slump Cone Base Plate Steel Rule Tamping Rod & Funnel.**

---

34-3265

**Air Entrainment Meter B Type Complete with Carrying Case. Supplied with Aluminium Tamping Bar.**

---

34-0130

**Tamping Rod 16mm Dia X 600mm Long Hemispherical At Both Ends.**

---

34-2910

**Compacting Bar 25mm Sq X 380mm**

---

34-6431/01

**Vibrating Poker 25mm Dia Tip 290mm Long. 220-240V 50/60Hz 1Ph.**

---

34-6134

**6" Retaining Caps**

---

70-0250/01

**Gsp210/250 Core Trimmer & Cut Off Machine Supplied with Coolant Pump Unit**

---

38-2010

**Vicat Frame**

---

38-2620

## ASTM Initial Set Needle

---

38-2660

## ASTM Vicat Mould

---

39-0035/01

## Automatic/Manual 5 litre nominal capacity Mortar Mixer

---

39-0060

## Bowl Cover

---

39-0065

## Scraper

---

39-1100

## Three-gang Mould

---

39-1150/01

## Jolting Table 220 - 240 V 50 Hz

---

37-5420

## Sub-Platen Assembly for 150mm Dia Specimens for Split Cylinder Testing to BS1881 / EN12390-6

---

37-5450

## Test Pieces EN 12390-6 Pack of 100 Hardboard.

---



## ADR Touch 3000 BS EN Compression Machine with Digital Readout and Self Centring Platens.

Code: [36-3320/01](#)

Product Group: [BS EN Compression Machines](#)

The ADR Touch range of 2000 kN and 3000 kN capacity compression machines has been designed to meet the need for reliable and consistent testing. The load frame is a welded steel fabrication carrying the ball-seated upper platen. Positively located on the loading ram, which is protected from debris by a flexible cover, the lower platen is marked for the centring of cube and cylinder specimens. Self-centring lower platens for cube location are supplied as standard on EN machines and are available as an optional extra on the standard machine. The two machines for cube testing to EN standards are assembled and aligned using a special compression frame stability tester.

The dimensions of the frame allow the testing of concrete cylinders up to 320 mm long x 160 mm diameter, 150 and 100 mm square cubes, and on EN/BS machines, 200 mm square cubes. Kerbs and flagstones may also be tested on ADR machines as well as 150 mm and 100 mm square section beams to ASTM C78 using the optional 100 kN flexural frames which are connected to the power pack.

## Standards

EN 12350-6, NF P18-411

## Further Information

**\*\*Not available for sale in the USA\*\***

ADR Touch BS EN 2000 and 3000 kN compression machines are supplied complete with self-centring lower platen and safety gates fitted with interlock switches ready for testing 300 x 150 mm diameter cylinders.

Whilst delivering all the features and reputation of the established ADR Series with its extensive design history, the new and improved user interface provides a high quality platform for testing that enhances the performance of ELE's compression machines.

New, sophisticated electronics further the benefits of simplified operation, whilst delivering the highest levels of accuracy in testing concrete and cement/mortar samples, satisfying the needs of Quality Control Managers, Lab Managers and Technicians.

### ACCURACY & SAVINGS

The new ADR Touch Series, with 145mm (5.7") high resolution QVGA touch screen interface and intuitive menu-driven operation, reduces the time taken to set up the machine and perform tests, reducing the time to train staff by up to 25%.

- Up to 6 sample types can be set as favorites, enabling one-touch set up for repeat testing.
- Full, QWERTY touch pad for input of test data.

Most testing errors produce lower strength results. Noncompliant loading rates can generate errors in measured strength. The user interface includes real-time display of load vs. time, further ensuring accurate and consistent test results and providing "goodness of test" data to improve traceability in your QC operations.

## TRACEABILITY & DATA QUALITY

The ADR range now provides improved data quality and traceability in due diligence cases - it is now possible to demonstrate traceability all the way from the machine/user to the accreditation body, increasing your reputation and peace of mind - all test results now come complete with the machine serial number attached.

- Enhanced USB data communications between PC and machine - eliminating the need for download software.
- Two gigabytes of storage memory.
- Full customization of sample sizes - stress calculations are automatically recalculated.

## USER SAFETY

With full safety gates as standard, total systems diagnostics, ram run-out switches and overload warnings ensure the safety of your employees and the reliability of your machine.

---

## Specification

Testing Standards	BS EN 12390-4, BS EN 12390-3, BS EN 12390-4, BS EN 12390-5, EN 12504-1, EN 1354, EN 1521, EN 3161, EN 1338, EN 772-6, EN 13286-41, BS 3892-3, BS 187, BS 6717, BS EN ISO 7500-1, ASTM E4
Capacity	3000 kN
Cubes (Concrete)	Up to 200 mm
Cylinders (Concrete)	Up to 160 x 320 mm
Blocks	Via optional Platen Handling System
Flexural Testing	Via Flexural Frame
TFV and ACV	Yes
Voltage Supply	220-240V 50/60 Hz 1Ph.
Frame Class (Stability)	Tested
Frame Type	Welded
Max vert. Clearance	340 mm
Max hor. Clearance	310 mm
Platen Sizes	Lower 220mm sq, Upper 300mm dia
Max Ram Travel	50 mm

---

## Spares/Consumables



## Pressure transducer, 0-700bar, 0.05 to 10v DC Output

Code: [6014A0062](#)



## EN 12390-3/4 Distance Piece - 20 mm Depth

Code: [37-5110](#)

Product Group: [Distance Pieces](#)

### Further Information

**\*\*Not available for sale in the USA\*\***



## EN 12390-3/4 Distance Piece - 50 mm Depth

Code: [37-5120](#)

Product Group: [Distance Pieces](#)

### Further Information

**\*\*Not available for sale in the USA\*\***





## EN 12390-3/4 Distance Piece - 80 mm Depth

Code: [37-5170](#)

Product Group: [Distance Pieces](#)

### Further Information

**\*\*Not available for sale in the USA\*\***



## EN 12390-3/4 Distance Piece - 100 mm Depth

Code: [37-5180](#)

Product Group: [Distance Pieces](#)

### Further Information

**\*\*Not available for sale in the USA\*\***



## Slump Test Set BS & ASTM. C/W Slump Cone Base Plate Steel Rule Tamping Rod & Funnel.

Code: [34-0192](#)

Product Group: [Slump Test](#)

BS and ASTM comprising of slump cone, base plate, steel rule, tamping rod and funnel.

### Further Information

**\*\*NOT AVAILABLE FOR SALE IN THE USA\*\***



## Air Entrainment Meter B Type Complete with Carrying Case. Supplied with Aluminium Tamping Bar.

Code: 34-3265

Product Group: Precision Air Entrainment Meter, Precision Air Entrainment Meter

- 7 litre capacity
- Shock-proof pressure gauge mounting
- Lightweight aluminum construction
- Heavy-duty plastic carrying case for easy transport to site

The proper control of entrained air in concrete is recognized as one of the most important functions in modern concrete manufacture. For the concrete engineer, the ELE Precision Air Entrainment Meter offers an instrument for the testing and designing of concrete mixes.

The instrument is designed so that the operating parts form an integral unit. The container is rigid, thus providing an accurate device for the performance of unit weight testing. For convenience, the tare weight in grams is stamped on the bottom. When used with the supplied nomograph, the air meter provides quick and easy particle density and percent of free moisture in aggregate determinations.

## Standards

ASTM C231, AASHTO T152

## Specification

Dimensions	248 x 345 mm (diameter x height)
Capacity	7 litres
Readings	Up to 22% entrained air
Accuracy	± 0.25% full scale
Aggregate size	50 mm maximum
Container	With tare weight stamped on bottom; 2-piece clamping device for positive seal
Pressure gauge	In shock-proof mounting
Weight	8 kg
Capacity	1/4 cu. Ft. (0.007 m <sup>3</sup> )
Readings	Up to 22% entrained air
Accuracy	1/4% full scale
Aggregate Size	2" (50.8 mm) maximum
Container	With tare weight stamped on

# Product Sheet

www.ele.com  
+44 (0) 01525 249 200



Water	bottom; 2-piece clamping device for positive seal.
Initial Pressure	4 oz required
Pressure Gauge	Approx. 10 strokes needed
Tamping Rod	In shock-proof mounting
Dimensions	Aluminium; 24" (610 mm) long 9-3/4" diam. X 13-1/4" h. (248 x 337 mm)
Weight	Net 15 lbs (6.8 kg)

---

## Spares/Consumables



### Concrete Air Indicator

Code: [38-3280/10](#)



### Gauge Kit

Code: [34-3265/12](#)



### Pump Assembly

Code: [34-3265/10](#)



## Tamping Rod 16mm Dia X 600mm Long Hemispherical At Both Ends.

Code: 34-0130

Product Group: Precision Air Entrainment Meter, Slump Test, Accessories for Concrete Moulds

Steel, 600 mm long x 16 mm dia, hemispherical at both ends

### Further Information

\*\*NOT AVAILABLE FOR SALE IN THE USA\*\*



## Compacting Bar 25mm Sq X 380mm

Code: [34-2910](#)

Product Group: [Accessories for Concrete Moulds,](#)  
[Precision Air Entrainment Meter](#)

Steel, 380 x 25 mm (length x square) tamping area,  
EN/BS.



## Vibrating Poker 25mm Dia Tip 290mm Long. 220-240V 50/60Hz 1Ph.

Code: [34-6431/01](#)

Product Group: [Vibrating Poker](#)

- High amplitude and speed
- Flexible shaft for long life

Used as an internal means of vibratory compaction. The poker is inserted into the concrete which is then compacted by the high frequency vibration action. For use in either laboratory or site environments, the diameter of the vibrating tip must not exceed 25% of the smallest dimension of the specimen.

### Further Information

**\*\*NOT AVAILABLE FOR SALE IN THE USA\*\***

For 220 - 240 V AC, 50 - 60 Hz, 1 ph

### Specification

Tip Dimensions	22 mm diameter x 250 mm long
Shaft dimensions	2.0 m long
Speed	12,000 vibrations/min.
Overall Dimensions	200 x 300 x 350 mm
Weight	7 kg





## 6" Retaining Caps

Code: [34-6134](#)

Product Group: [Concrete Capping Pads and Retainers](#)

Set of 2.

## Standards

ASTM C1231, AASHTO T22

## Further Information

Capping Pads with Retainers can only be used on compression testers with a vertical daylight opening of 14-1/2" (368 mm) between platens

## Specification

Capping Pads.

Tough elastometric material; 60 durometer pads may be used on any strength concrete; however, the longevity is lowered when used on cylinders in excess of 5,500 psi. 70 durometer pads should be used only on cylinders where concrete is 4,500 psi or higher.

Retainers.

Machined, high alloy steel

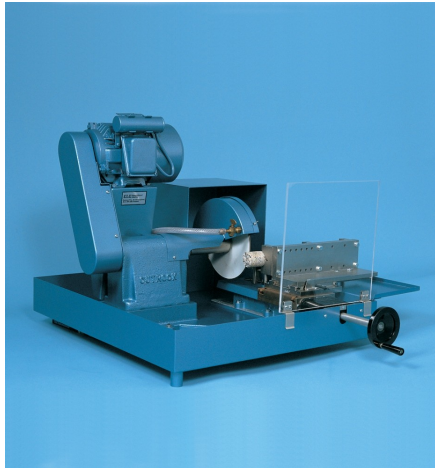
Weights.

Pads: Net 8 oz. (227 g) ea.

Retainers:

4" (102 mm) Net 4 lbs. (1.8 kg) ea.

6" (152 mm) Net 8 lbs. (3.6 kg) ea.



## Gsp210/250 Core Trimmer & Cut Off Machine Supplied with Coolant Pump Unit

Code: [70-0250/01](#)

Product Group: [Sample Preparation](#)

This unit, designed for use in Rock Mechanics, can also be used in mineralogy, ceramics and refractory sample preparation. Cores in excess of 140 mm length and cubes up to 100 mm square can also be prepared.

### Further Information

Supplied complete with coolant recirculation pump/tank unit and 1 each diamond set cutting disc and double faced cup wheel. For 220 - 240 V AC, 50 Hz, 1 ph.

### Specification

Dimensions (l x w x h)	406 x 915 x 760 mm
Two vices supplied	1- Regular and Irregular samples up to 70 x 125 mm 1- V-vice cores up to 57 mm diameter x 140 mm long
Blade capacity	200 mm
Rated Power	750 W
Weight	118 kg



## Vicat Frame

Code: [38-2010](#)

Product Group: [Vicat Method](#)

Complete with consistency plunger, 10 mm diameter.  
Requires one initial or final set needle to make up test weight to 300g.

## Standards

EN 196-3, EN 13454-2, ASTM C187, ASTM C191

## Further Information

**\*\*NOT AVAILABLE FOR SALE IN THE USA\*\***

## Spares/Consumables



## Consistency Plunger

Code: [38-2010/10](#)

## ASTM Initial Set Needle

Code: [38-2620](#)

Product Group: [Vicat Apparatus, Vicat Method](#)

1 mm diameter.



## Standards

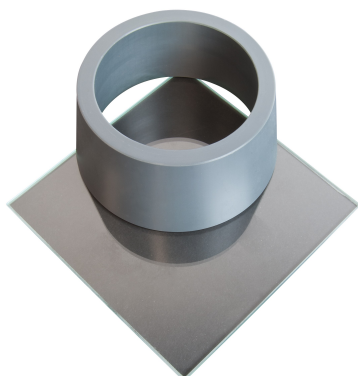
ASTM C187, ASTM C191

## Spares/Consumables

### Consistency Plunger

Code: [38-2010/10](#)





## ASTM Vicat Mould

Code: [38-2660](#)

Product Group: [Vicat Apparatus](#), [Vicat Method](#),  
[Automatic Vicat](#)

Accessory: manufactured from non-absorbent plastic and supplied complete with a glass base plate.

## Standards

ASTM C187, ASTM C191

## Spares/Consumables



## Consistency Plunger

Code: [38-2010/10](#)



## Automatic/Manual 5 litre nominal capacity Mortar Mixer

Code: 39-0035/01

Product Group: Automatic/Manual 5 Litre Nominal Capacity Mortar Mixer

- New Microprocessor control
- New mix program selector
- Complies with latest EN Standards update
- Choice of automatic mixing cycles
- Sand and water dispenser supplied as standard

This mixer is designed to mix mortars and cement pastes to the requirements of the above Standards. The mixing paddle has a planetary motion and is driven by a motor with a microprocessor based speed and program controller. The mixer can be operated either in an automatic or manual mode. When the mixer is used in the manual mode, the two mixing speeds can be changed by means of a rocker switch, without switching off the motor. In the automatic mode any one of the preset mixing programs may be selected.

## Standards

EN 196-1, EN 196-3, EN 413-2, EN 459-2, EN 1744-1, EN 13279-2, EN 1015-2, EN 13395-1, EN 13454-2, ISO 679, BS 3892-1, BS 3892-3, BS 6463-103, BS 4551-1

## Further Information

**\*\*NOT AVAILABLE FOR SALE IN THE USA\*\***

Complete with bowl and paddle, sand and Water dispensers. For 220 - 240 V AC, 50 - 60 Hz, 1 ph.

## Specification

Dimensions (l x w x h)	530 x 350 x 580 mm
Speeds (rpm) Low, High	Paddle: 140 ± 5, 285 ± 10 Mixing Head: 62 ± 5, 125 ± 10
Rated Power	180 W
Bowl Capacity	5 litres approx.
Weight	54 kg

## Spares/Consumables



## Bowl

Code: [39-0031/11](#)



## Paddle

Code: [39-0031/10](#)



## Bowl Cover

Code: [39-0060](#)

Product Group: [Automatic/Manual 5 Litre Nominal Capacity Mortar Mixer](#)

## Standards

EN 196-1, EN 196-3, EN 413-2, EN 459-2, EN 1744-1, EN 13279-2, EN 1015-2, EN 13395-1, EN 13454-2, ISO 679, BS 3892-1, BS 3892-3, BS 6463-103, BS 4551-1

## Further Information

**\*\*NOT AVAILABLE FOR SALE IN THE USA\*\***





## Scraper

Code: [39-0065](#)

Product Group: [Automatic/Manual 5 Litre Nominal Capacity Mortar Mixer](#)

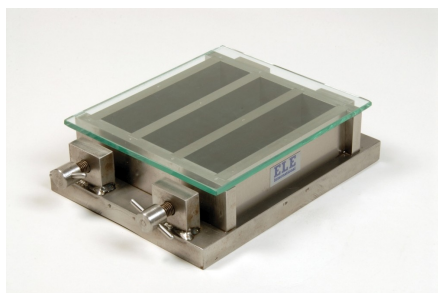
Plastic 200mm long. Pack of 5.

## Standards

EN 196-1, EN 196-3, EN 413-2, EN 459-2, EN 1744-1, EN 13279-2, EN 1015-2, EN 13395-1, EN 13454-2, ISO 679, BS 3892-1, BS 3892-3, BS 6463-103, BS 4551-1

## Further Information

**\*\*NOT AVAILABLE FOR SALE IN THE USA\*\***



## Three-gang Mould

Code: [39-1100](#)

Product Group: [Moulding of Prisms](#)

For 40.1 x 40 x 160 mm mortar prisms. This mould is manufactured to a very high specification. Supplied with glass plate.

## Further Information

\*\*NOT AVAILABLE FOR SALE IN THE USA\*\*

## Spares/Consumables



### Glass Plate

Code: [39-1100/10](#)



### Mortar Sand

Code: [39-1170](#)



## Jolting Table 220 - 240 V 50 Hz

Code: [39-1150/01](#)

Product Group: [Jolting Table](#)

Supplied without moulds.

## Standards

EN 196-1, EN 413-2, EN 459-2, EN 1744-1, EN 1015-10, EN 1015-11, EN 13454-2, ISO 679, BS 3892-1, BS 4551-1

## Further Information

**\*\*NOT AVAILABLE FOR SALE IN THE USA\*\***

## Spares/Consumables



### Mortar Sand

Code: [39-1170](#)



### Scraper

Code: [39-1130](#)



## Sub-Platen Assembly for 150mm Dia Specimens for Split Cylinder Testing to BS1881 / EN12390-6

Code: [37-5420](#)

Product Group: [Platen Assemblies](#)

For testing cylinders of 150 x 150 mm and 150 x 300 mm (diameter x length).

### Standards

EN 12350-6

### Further Information

**\*\*Not available for sale in the USA\*\***



## Test Pieces EN 12390-6 Pack of 100 Hardboard.

Code: [37-5450](#)

Product Group: [Platen Assemblies](#)

Hardboard strips for use with Split Cylinder Platen Assemblies. Pack of 100.

## Further Information

**\*\*Not available for sale in the USA\*\***