



IF IT'S WORTH BUILDING, IT'S WORTH TESTING

This wishlist was generated on 29/08/2016, and contains the following Products:

37-5420

Sub-Platen Assembly for 150mm Dia Specimens for Split Cylinder Testing to BS1881 / EN12390-6

37-5450

Test Pieces EN 12390-6 Pack of 100 Hardboard.

23-3425

Large Capacity Sample Splitter.

34-8100/09

Buoyancy Balance

34-8105

Cradle

34-2800

Bulk Density Measure 30 Litre

34-2910

Compacting Bar 25mm Sq X 380mm

34-0130

Tamping Rod 16mm Dia X 600mm Long Hemispherical At Both Ends.

42-5305/01

Los Angeles Abrasion Machine Meets ASTM and European Standards. 220-240V 50Hz 1Ph.

42-5300/10

Set of 12 Abrasive Charges (ASTM).

42-0410

Flakiness Gauge.

42-0600

Set of Flakiness Sieves Comprising 1 Ea 4.9mm 7.2mm 10.2mm 14.4mm 19.7mm 26.3mm and 33.9mm

24-4919

Sand Equivalent Apparatus ASTM Aashto with Carrying Case.

24-4925

5 Litre Syphon Assembly with Connection for 5mm Id Tubing.

24-4930

Calcium Chloride 2.5Kg.

24-4932

Formaldehyde 40% Aqueous Solution 2.5 Litre.

24-4934

Glycerol Analar 2.5 Litre

24-9000

BS Standard Compaction Mould 1000Cm Capacity.

24-9010

Straight Edge 300mm.

24-9066

ASTM Compaction Mould 152mm.

24-9002

Standard Compaction Rammer 2.5Kg BS1377-1975

24-9004

BS Compaction Rammer 4.5Kg Wt.

24-9060

Proctor Mould



Sub-Platen Assembly for 150mm Dia Specimens for Split Cylinder Testing to BS1881 / EN12390-6

Code: [37-5420](#)

Product Group: [Platen Assemblies](#)

For testing cylinders of 150 x 150 mm and 150 x 300 mm (diameter x length).

Standards

EN 12350-6

Further Information

****Not available for sale in the USA****



Test Pieces EN 12390-6 Pack of 100 Hardboard.

Code: [37-5450](#)

Product Group: [Platen Assemblies](#)

Hardboard strips for use with Split Cylinder Platen Assemblies. Pack of 100.

Further Information

Not available for sale in the USA



Large Capacity Sample Splitter.

Code: 23-3425

Product Group: Large Capacity Sample Splitter, Large Sample Splitter

The splitter is designed for the reduction of test samples which are too large in volume to be conveniently handled. It divides samples so that half is representative of the original total sample and handles material up to 6 inches in particle size.

The lever-actuated unit is constructed of heavy gauge welded steel with a hopper which holds up to 1 cuft. The single splitter chute provides wide flexibility in sizes of opening and adjustment is provided for chutes of 0.5, 1.5, 2, 3, 4 or 6 inch by positioning of the chute bars. Overall height is approximately 1 meter. Hopper size 735 mm long x 480 mm wide (approx).

Further Information

Complete with 2 material pans and a bag-loading chute.

Specification

Capacity	1 cu. ft. (0.028 m3); for sand sizes up to 4" (102 mm).
Hopper	Lever-actuated, clamshell design.
Chute Bars	48 aluminum bars, 1/2" (13 mm) width.
Chute Area	24 " (610 mm) overall width.
Chute Openings	Adjustable; 1/2", 1", 1-1/2", 2", 3", 4", or 6".
Frame	Welded, heavy-gage steel.
Chute Attachment	Replaces pan to allow sample collection in bag; 28-1/4" l. x 7"w. x 5-1/2" h. (718 x 178 x 140 mm).
Material Pans	Two included; 25 -3/4" l. x 9" w. x 6-1/2" h. (654 x 229 x 165 mm).
Overall Dimensions	29" l. x 19" w. x 39" h. (737 x 483 x 999 mm).
Weight	Shpg. 142 lbs. (64 kg).



Buoyancy Balance

Code: [34-8100/09](#)

Product Group: [Hardened Concrete - Buoyancy Balance, Percentage Refusal Density \(PRD\)](#)

Standards

EN 12697-32, EN 13280-4, BS 598-104

Further Information

****NOT AVAILABLE FOR SALE IN THE USA****



Cradle

Code: [34-8105](#)

Product Group: [ELE Bouyancy Balance](#), [Percentage Refusal Density \(PRD\)](#), [Hardened Concrete - Buoyancy Balance](#)

Standards

EN 12697-32, EN 13280-4, BS 598-104



Bulk Density Measure 30 Litre

Code: [34-2800](#)

Product Group: [Bulk Density Measures, Fresh Concrete](#) - [Bulk Density Measures](#)

Manufactured from heavy gauge steel these bulk density measures comply with the requirements of either BS 812, EN 1097-3, 12350-6 or ASTM C138. All measures incorporate carrying handles as standard.

Standards

BS 812, EN 1097-3, EN 12350-6, ASTM C138

Further Information

****NOT AVAILABLE FOR SALE IN THE USA****

For other bulk density measures see the aggregates section



Compacting Bar 25mm Sq X 380mm

Code: [34-2910](#)

Product Group: [Accessories for Concrete Moulds,](#)
[Precision Air Entrainment Meter](#)

Steel, 380 x 25 mm (length x square) tamping area,
EN/BS.



Tamping Rod 16mm Dia X 600mm Long Hemispherical At Both Ends.

Code: 34-0130

Product Group: Precision Air Entrainment Meter, Slump Test, Accessories for Concrete Moulds

Steel, 600 mm long x 16 mm dia, hemispherical at both ends

Further Information

****NOT AVAILABLE FOR SALE IN THE USA****



Los Angeles Abrasion Machine Meets ASTM and European Standards. 220-240V 50Hz 1Ph.

Code: [42-5305/01](#)

Product Group: [Los Angeles Abrasion Machine](#), [Los Angeles Abrasion Machine](#)

The machine consists of a closed hollow cylindrical steel drum rotating around its horizontal axis on ball bearing units mounted on a sturdy base framework.

The drum is driven at a speed of between 30 - 33 rpm via an enclosed belt drive arrangement from an electric motor/gearbox unit situated on the base frame. Inside the drum a full length steel shelf is attached, accessed by a dust-proof opening.

The cylinder incorporates a removable internal shelf, one shelf position is provided to meet the requirements of both the ASTM and EN test standards.

Controls are located easily on the right-hand side of the machine at convenient operator height.

Start and stop push buttons and a subtracting revolution counter allows the user to preset the number of revolutions before an automatic stop.

Standards

EN 1097-2, ASTM C131, ASTM C535, AASHTO T96, NF P18-573

Further Information

Less charges. For 220 - 240 V AC, 50 Hz, 1ph.

Specification

Capacity	5,000 g each of aggregate and charge.
Drum Speed	30-33 rpm.
Frame	Welded structural steel.
Counter	Adjustable; automatic shut-off; push-button reset and adjustment.
Controls	Magnetic motor starter with overload protection and integral On-Off switches.
Dimensions	38.6" w. x 36.2" d. x 38.6" h. (980 x 920 x 980 mm).
Weight	Net 882 lbs. (400 kg).

Product Sheet

www.ele.com
+44 (0) 01525 249 200



Motor

1 HP

Set of 12 Abrasive Charges (ASTM).

Code: [42-5300/10](#)

Product Group: [Los Angeles Abrasion Machine](#), [Los Angeles Abrasion Machine](#)

ASTM Set of 12.



Standards

EN 1097-2, ASTM C131, ASTM C535, AASHTO T96



Flakiness Gauge.

Code: [42-0410](#)

Product Group: [Flakiness Sieves and Gauges](#)

Constructed of heavy gauge sheet steel to the dimensions specified in BS 812.

Standards

BS 812

Further Information

****NOT AVAILABLE FOR SALE IN THE USA****



Set of Flakiness Sieves Comprising 1 Ea 4.9mm 7.2mm 10.2mm 14.4mm 19.7mm 26.3mm and 33.9mm

Code: [42-0600](#)

Product Group: [Flakiness Sieves and Gauges](#)

Comprising of 1 each, 4.9 mm, 7.2 mm, 10.2 mm,
14.4 mm, 19.7 mm, 26.3 mm and 33.9 mm.

Standards

BS 813

Further Information

****NOT AVAILABLE FOR SALE IN THE USA****



Sand Equivalent Apparatus ASTM Aashto with Carrying Case.

Code: [24-4919](#)

Product Group: [Sand Equivalent Value, Sand Equivalent Value](#)

Set Includes:

- 4 Plastic measuring cylinders
- 1 Carrying case
- 1 Weighted foot assembly
- 1 Irrigator tube
- 1 Rubber tubing complete with pinch clip
- 1 Funnel.

Standards

ASTM D2419, AASHTO T176



5 Litre Syphon Assembly with Connection for 5mm Id Tubing.

Code: [24-4925](#)

Product Group: [Sand Equivalent Value](#), [Sand Equivalent Value](#)

With 5 litre polythene bottle. Supplied without rubber tubing.

Standards

ASTM D2419, AASHTO T176

Further Information

****NOT AVAILABLE FOR SALE IN THE USA****



Calcium Chloride 2.5Kg.

Code: 24-4930

Product Group: Sand Equivalent Value, Sand
Equivalent Value

Standards

ASTM D2419, AASHTO T176

Further Information

NOT AVAILABLE FOR SALE IN THE USA



Formaldehyde 40% Aqueous Solution 2.5 Litre.

Code: [24-4932](#)

Product Group: [Sand Equivalent Value](#), [Sand Equivalent Value](#)

40% solution

Standards

ASTM D2419, AASHTO T176

Further Information

****NOT AVAILABLE FOR SALE IN THE USA****



Glycerol Analar 2.5 Litre

Code: 24-4934

Product Group: Sand Equivalent Value, Sand
Equivalent Value

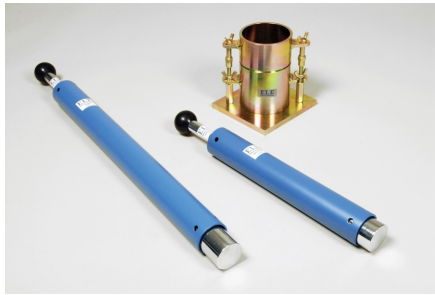
2.5 litres

Standards

ASTM D2419, AASHTO T176

Further Information

NOT AVAILABLE FOR SALE IN THE USA



BS Standard Compaction Mould 1000Cm Capacity.

Code: 24-9000

Product Group: [Accessories for BS compaction and CBR, BS/EN compaction test 2.5kg](#)

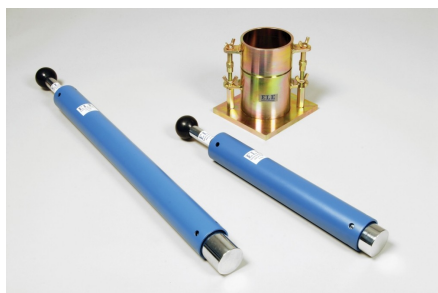
Plated steel standard compaction mould to BS 1377, comprising of a collar mould body and base plate with quick release wing nuts for easy dismantling.

Standards

BS 1377-4, BS 1924-2

Specification

Mould volume	1 litre
Dimensions	105 mm dia x 115.4 mm high
Construction	All steel, threaded studs with wing nuts, plated.
Weight	5.5 kg



Straight Edge 300mm.

Code: [24-9010](#)

Product Group: [BS/EN compaction test 4.5kg, Proctor compaction, Straightedge](#)

300 mm

Standards

BS 1377-4, BS 1924-2, ASTM D698, ASTM D1557, AASHTO T99, EN 13286-2, EN 13286-4, ASTM D1883, AASHTO T193, ASTM D558, ASTM D559, ASTM D560, AASHTO T134, AASHTO T135, AASHTO T136, AASHTO T180

Specification

Construction	Flat ground tool steel; beveled edge.
Dimensions	12 " l. x 1-1/4" w. x 1/8" thick (305 x 32 x 3 mm).
Weight	Net 9 oz. (255 g).



ASTM Compaction Mould 152mm.

Code: 24-9066

Product Group: Accessories for ASTM and Proctor compaction, ASTM/Modified Proctor compaction

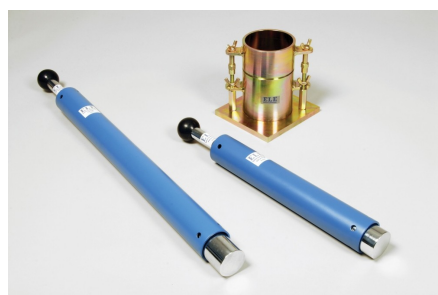
152mm inside diameter

Standards

ASTM D698, ASTM D1557, AASHTO T99, AASHTO T180

Specification

Dimensions	152.4 mm dia x 116.4 mm high
Rammer Mould Volume	1/13.33 ft ³
Construction	All steel, threaded studs with wing nuts, plated.
Weight	8.2 kg



Standard Compaction Rammer 2.5Kg BS1377-1975

Code: [24-9002](#)

Product Group: [BS/EN compaction test 2.5kg](#)

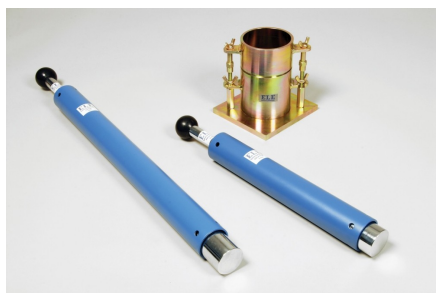
50mm diameter with 300mm drop, manufactured from corrosion protected steel.

Standards

BS 1377-4, BS 1924-2

Specification

Rammer	50 mm dia, 2.5 kg
Drop	300 mm
Guide Sleeve	Machined steel tubing with air pressure release holes
Finish	Corrosion resistant
Weight kg	4.2



BS Compaction Rammer 4.5Kg Wt.

Code: [24-9004](#)

Product Group: [BS/EN compaction test 4.5kg, Straightedge](#)

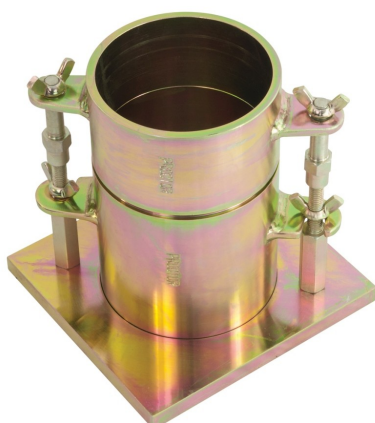
50mm diameter with 450mm drop, manufactured from corrosion protected steel.

Standards

BS 1377-4, BS 1924-2

Specification

Rammer	50 mm dia, 4.5 kg
Drop	450 mm
Guide Sleeve	Machined steel tubing with air pressure release holes
Finish	Corrosion resistant
Weight kg	7.5



Proctor Mould

Code: 24-9060

Product Group: Accessories for ASTM and Proctor compaction, Proctor compaction

Standards

ASTM D558, ASTM D559, ASTM D560, ASTM D698, ASTM D1557, AASHTO T99, AASHTO T134, AASHTO T135, AASHTO T136, AASHTO T180

Specification

Dimensions	101.6 mm dia x 116.4 mm high
Rammer Mould Volume	1/30 ft ³
Construction	All steel, threaded studs with wing nuts, plated.
Weight	5.4 kg