



IF IT'S WORTH BUILDING, IT'S WORTH TESTING

This wishlist was generated on 13/09/2016, and contains the following Products:

45-6310

Compaction Mould

45-6410

Compaction Pedestal BS 598

45-6460

Compaction Hammer

45-6462

Paper Discs

45-6463

Steel Block

45-6850

Breaking Head (Marshall)

82-5247

Portable Thermometer 100 ml

500-162

Nylon-coated steel tape

77-0115

Digital Point Load Test Apparatus.

46-3310/01

Cleveland Flash Cup Apparatus

46-4605

BS/EN Ring and Ball Apparatus

46-4825/01

Magnetic Stirrer

45-5580/01

Isomantle Electric Heater

42-5305/01

**Los Angeles Abrasion Machine Meets ASTM and European Standards.
220-240V 50Hz 1Ph.**

38-2010

Vicat Frame

38-2110

EN Initial and Final Set Needle

38-2200

Vicat Mould

42-1000/01

Buoyancy Balance 6Kg X 0.1G. Supplied with Support Frame Water Tank & Suspension Hook.

42-6000/12

3.00" Rubber Mounted TRL (55) Slider for 42-6000

38-6000

Flow Table

38-6040

Flow Mould

35-2505

Crack Detection Microscope Magnification X 40 Measuring Range of 4mm In 0.02mm Divisions

35-2510

Calibrated Crack Monitor

78-1225/01

100 Litre Drying Oven

23-3505

Mortar and Pestle Porcelain.

23-6191/01

Bench-Mounting Mixer 5 Litre Capacity Complete with Bowl Beater and Whisk. 220-240V 50Hz 1Ph.

82-0420

Measuring Cylinder - Glass 250 ml

82-0380

Measuring Cylinder - Glass 100 ml

82-8500/01

Water Bath - 12 litres

82-1140

Conical Flask (Erlenmeyer) - 250 ml

82-1300

Bulb Pipette

82-0140

Beaker - 250 ml

81-0120

Spatula 150 mm

45-6750/01

Gyratory Compactor to EN 12697-31, 10, ASTM D6925, SHRP M-002, AASHTO T312, inc. PC 220-240V 50Hz

45-6750/10

100mm Dia mould & platens

45-6750/12

150mm Dia mould & platens

45-6750/22

150 mm filter papers (pack of 100)

45-6750/24

100mm filter papers (pack of 100)

45-6750/28

Small air compressor for 45-6750

45-6710

Specimen Extruder

46-4150/01

Rolling Thin-Film Oven 220-240V 50/60 Hz

42-6000

Pendulum Skid Resistance Tester

42-6200

Base Plate for Skid Resistance Tester for lab testing

42-6000/10

Set of 3 Spreader Feet for Skid Resistance Tester for in-situ testing

46-6100/01

Asphalt Binder Analyser 220-240V 50/60 Hz

78-0760

Clamped Boss Load Ring - 28.0 kN

24-9183

Cbr Penetration Piston (Adjustable).

24-9186

Penetration Dial Gauge BS

24-9188

Bracket and Adaptor. Dual Purpose Mounting Bracket for CBR Penetration Gauges EL24-9184/EL24-9186

24-9290

45kN (10000Lb) Capacity Mechanical Jack.

24-9300

Ball Seating for EL 24-9290 45 kN Jack

24-9308

Set of Extension Rods Complete

24-9312

Datum Bar Assembly.

24-9320

10Lb (4.5Kg) Annular Surcharge Weight.

24-9322

10Lb (4.5Kg) Slotted Surcharge Weight.

24-9298

Land Rover Bracket to Attach EL29-200 Jack. for Land Rovers Models 90 & 110 From 1983 Onwards.

82-3320

Porcelain Crucible

34-8100/09

Buoyancy Balance

37-4830

BS Block Platens & Platen Handling Assembly for 2000kN & 3000kN BS Frames.

37-4835

Extended Front Safety Gate for Use with 2000kN BS/EN Load Frames Fitted with Rectangular Platens.

38-3800/01

Autoclave

35-2302/09

Pundit Lab Ultrasonic Concrete Tester 110-240V 50/60Hz 1Ph

70-0095/01

Rock Core Drill Supplied with 2 X Nx Core Drill Bit

39-0410

Three-gang Mould

500-190

Binoculars, 10x50

36-1410/01

1000/500kN Motorised Compression/Tension Machine (complete with grips) 220-240V 50/60Hz 1Ph.

37-5050

Standard Distance Piece - 80 mm Depth

37-5100

Standard Distance Piece - 100 mm Depth

34-0192

Slump Test Set BS & ASTM. C/W Slump Cone Base Plate Steel Rule Tamping Rod & Funnel.

34-4570

150mm Cube Mould 4-Part Clamp Type. Cast Iron Construction. BS EN Compliant.

79-2040

300mm Dia BS Sieve 38 Mic Stainless Steel Mesh. Fitted with Reinforcing Mesh.

79-2070

300mm Dia BS Sieve 63 Mic Stainless Steel Mesh. Fitted with Reinforcing Mesh.

79-2080

300mm Dia BS Sieve 75 Mic Stainless Steel Mesh. Fitted with Reinforcing Mesh.

79-2085

300mm Dia Iso:565 3310/1 Sieve 80 Mic Stainless Steel Mesh. Fitted with Reinforcing Mesh.

79-2090

300mm Dia BS Sieve 90 Mic Stainless Steel Mesh. Fitted with Reinforcing Mesh.

79-2095

300mm Dia Iso:565 3310/1 Sieve 100 Mic Stainless Steel Mesh. Fitted with Reinforcing Mesh.

79-2110

300mm Dia BS Sieve 125Mic Stainless Steel Mesh. Fitted with Reinforcing Mesh.

79-2120

300mm Dia BS Sieve 150Mic Stainless Steel Mesh. Fitted with Reinforcing Mesh.

79-2130

300mm Dia BS Sieve 180Mic Stainless Steel Mesh. Fitted with Reinforcing Mesh.

79-2135

300mm Dia Iso:565 3310/1 Sieve 200 Mic Stainless Steel Mesh. Fitted with Reinforcing Mesh.

79-2140

300mm Dia BS Sieve 212Mic Stainless Steel Mesh. Fitted with Reinforcing Mesh.

79-2150

300mm Dia BS Sieve 250Mic Stainless Steel Mesh. Fitted with Reinforcing Mesh.

79-2160

300mm Dia BS Sieve 300Mic Stainless Steel Mesh. Fitted with Reinforcing Mesh.

79-2165

300mm Dia Iso:565 3310/1 Sieve 315 Mic Stainless Steel Mesh.

79-2170

300mm Dia BS Sieve 355Mic Stainless Steel Mesh

79-2175

300mm Dia Iso:565 3310/1 Sieve 400 Mic Stainless Steel Mesh

79-2180

300mm Dia BS Sieve 425Mic Stainless Steel Mesh.

79-2190

300mm Dia BS Sieve 500Mic Stainless Steel Mesh.

79-2200

300mm Dia BS Sieve 600Mic Stainless Steel Mesh.

79-2205

300mm Dia Iso:565 3310/1 Sieve 630 Mic Stainless Steel Mesh.

79-2220

300mm Dia BS Sieve 850Mic Stainless Steel Mesh.

79-2230

300mm Dia BS Sieve 1.00mm Stainless Steel Mesh.

79-2240

300mm Dia BS Sieve 1.18mm Stainless Steel Mesh.

79-2245

300mm Dia Iso:565 3310/1 Sieve 1.25mm Stainless Steel Mesh.

Contents

www.ele.com
+44 (0) 01525 249 200



79-2255

300mm Dia Iso:565 3310/1 Sieve 1.60mm Stainless Steel Mesh.

79-2260

300mm Dia BS Sieve 1.70mm Stainless Steel Mesh.

79-2270

300mm Dia BS Sieve 2.00mm Stainless Steel Mesh.

79-2280

300mm Dia BS Sieve 2.36mm Stainless Steel Mesh.

79-2285

300mm Dia Iso:565 3310/1 Sieve 2.50mm Stainless Steel Mesh.

79-2290

300mm Dia BS Sieve 2.80mm Stainless Steel Mesh.

79-2300

300mm Dia BS Sieve 3.35mm Stainless Steel Mesh.

79-2310

300mm Dia BS Sieve 4.00mm Stainless Steel Mesh.

Compaction Mould

Code: 45-6310

Product Group: Accessories for manual and automatic compaction, Asphalt Compaction Mould

Comprising of mould body, baseplate and combined filling/extraction collar.



Standards

EN 12697-30, ASTM D6926, AASHTO T245

Specification

Construction	Machined seamless steel forming mold; base and collar.
Finish	Plated for rust resistance.
Dimensions	4" (101.6 mm) i.d. x 3" (76.2 mm) internal h. with base.
Weight	Net 6 lbs. (2.7 kg).



Compaction Pedestal BS 598

Code: [45-6410](#)

Product Group: [Manual Compaction](#)

Comprising a 300 mm sq x 25 mm thick steel plate complete with 4 tie rods and securing nuts. A mould clamp and hammer guide are fitted to the plate. The unit is supplied complete with a laminated hardwood block.

Standards

EN 12697-30

Further Information

****NOT AVAILABLE FOR SALE IN THE USA****



Compaction Hammer

Code: [45-6460](#)

Product Group: [Manual Compaction, Stability Compaction Hammer](#)

Satisfies BS 598. The hammer has a 4535 g sliding weight with a free fall of 457 mm.

Standards

EN 12697-30, ASTM D6926, AASHTO T245

Specification

Tamping Face	3-7/8" (98 mm) diam.
Hammer	10 lb. (4.54 kg).
Drop	18" (457 mm).
Construction	Machined steel; cast aluminum handle.
Weight	Net 16 lbs. (7.2 kg).

Paper Discs

Code: [45-6462](#)

Product Group: [Accessories for manual and automatic compaction, Filter Paper Discs](#)

Non-absorbent, 99 mm diameter, pack of 100.



Standards

EN 12697-30

Specification

Weight

Net 2.9 oz. (82 g).

Steel Block

Code: 45-6463

Product Group: Accessories for manual and automatic compaction

100 mm diameter x 50 mm height. For heating the compaction hammer foot.



Standards

EN 12697-30

Further Information

NOT AVAILABLE FOR SALE IN THE USA

Spares/Consumables



Baseplate

Code: 45-6310/11



Compaction Mould Body

Code: 45-6310/10



Breaking Head (Marshall)

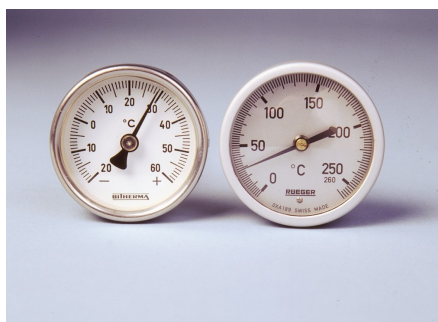
Code: 45-6850

Product Group: [Accessories for the Marshall test](#)

Complete with gauge disc. Supplied without flow meter.

Standards

EN 12697-34



Portable Thermometer 100 ml

Code: [82-5247](#)

Product Group: [Portable Dial-type Thermometers](#)

50 mm diameter dial with a 180 mm long stem.

Further Information

****NOT AVAILABLE FOR SALE IN THE USA****



Nylon-coated steel tape

Code: [500-162](#)

Product Group: [Surveying Equipment](#)

50 m on open frame winder.



Digital Point Load Test Apparatus.

Code: 77-0115

Product Group: [Digital Point Load Tester](#), [Point-Load Strength Test](#)

Originally developed at Imperial College, London, the apparatus comprises a two-column fixed crosshead frame and a hand operated hydraulic jack.

Pressure applied by the jack extends the piston carrying the lower conical point. The upper point is fixed to the crosshead with a scale mounted on the frame to provide specimen diameter information for use in point load strength index calculations. Pressure is indicated directly on the digital readout unit. Loads up to 55 kN can be applied to specimens as large as 101.6 mm in diameter.

The apparatus is supplied complete with heavy-duty face mask.

Standards

EN DD ENV 1997-2, ASTM D5731

Specification

Capacity	55 kN
Maximum sample size	101.6 mm
Load range	0 to 55 kN x 0.001 kN
Weight	25 kg
Capacity	13 ,000 lbf. (55 kN).
Specimen Size	4" (101.6 mm) maximum.
Load Range	0-13 ,000 lbf. (55 kN) x 0.2 lbf. (0.001 kN).
Weight	Net 60 lbs. (27.2 kg).

Spares/Consumables



Set of Cones for Digital Point Load Tester

Code: 77-0115/10



Cleveland Flash Cup Apparatus

Code: [46-3310/01](#)

Product Group: [Cleveland Flash Cup Apparatus](#)

The ELE Semi-Automatic Cleveland Open Cup flashpoint Tester is equipped with an electrically heated cup (with a variable control to set temperature rise rate), a button operated and electrically driven sweep arm and a test flame for use on natural gas. Bench mounted, the unit is incorporated in an easy to clean stainless steel case.

Standards

BS 2000-36, EN ISO 2592, ASTM D92, IP 36

Further Information

****NOT AVAILABLE FOR SALE IN THE USA****

For 220 - 240 V AC, 50 - 60 Hz, 1 ph.

Specification

Temperature Range	Ambient to 400°C
Power	500 W maximum
Ramp rate	Variable, manually controlled
Voltage	220/240 V, 50/60 Hz
Size (HxWxD)	33 x 31 x 29 cm
Weight	6.5 kg



BS/EN Ring and Ball Apparatus

Code: [46-4605](#)

Product Group: [Ring and Ball Apparatus](#)

With 2 shouldered pattern rings, 2 ball-centring guides and 2 balls. The apparatus has a support frame and is retained in a heat resistant container.

Standards

EN 1427, BS 2000-58

Further Information

****NOT AVAILABLE FOR SALE IN THE USA****



Magnetic Stirrer

Code: [46-4825/01](#)

Product Group: [Ring and Ball Apparatus](#)

Utilises a rotating magnetic field to induce variable speed stirring action. A built-in regulating transformer provides fine temperature control of liquid up to a maximum temperature of +150°C. The unit is suitable for use with the Ring and Ball Apparatus.

Standards

EN 1427, BS 2000-58

Further Information

****NOT AVAILABLE FOR SALE IN THE USA****



Isomantle Electric Heater

Code: [45-5580/01](#)

Product Group: [Sample Mixers](#), [Mixing](#), [Sample Mixers](#)

For use with 23-6191 Bench Mounting Mixer.

Standards

EN 12697-35

Further Information

****NOT AVAILABLE FOR SALE IN THE USA****



Los Angeles Abrasion Machine Meets ASTM and European Standards. 220-240V 50Hz 1Ph.

Code: [42-5305/01](#)

Product Group: [Los Angeles Abrasion Machine](#), [Los Angeles Abrasion Machine](#)

The machine consists of a closed hollow cylindrical steel drum rotating around its horizontal axis on ball bearing units mounted on a sturdy base framework.

The drum is driven at a speed of between 30 - 33 rpm via an enclosed belt drive arrangement from an electric motor/gearbox unit situated on the base frame. Inside the drum a full length steel shelf is attached, accessed by a dust-proof opening.

The cylinder incorporates a removable internal shelf, one shelf position is provided to meet the requirements of both the ASTM and EN test standards.

Controls are located easily on the right-hand side of the machine at convenient operator height.

Start and stop push buttons and a subtracting revolution counter allows the user to preset the number of revolutions before an automatic stop.

Standards

EN 1097-2, ASTM C131, ASTM C535, AASHTO T96, NF P18-573

Further Information

Less charges. For 220 - 240 V AC, 50 Hz, 1ph.

Specification

Capacity	5,000 g each of aggregate and charge.
Drum Speed	30-33 rpm.
Frame	Welded structural steel.
Counter	Adjustable; automatic shut-off; push-button reset and adjustment.
Controls	Magnetic motor starter with overload protection and integral On-Off switches.
Dimensions	38.6" w. x 36.2" d. x 38.6" h. (980 x 920 x 980 mm).
Weight	Net 882 lbs. (400 kg).

Product Sheet

www.ele.com
+44 (0) 01525 249 200



Motor

1 HP



Vicat Frame

Code: [38-2010](#)

Product Group: [Vicat Method](#)

Complete with consistency plunger, 10 mm diameter.
Requires one initial or final set needle to make up test weight to 300g.

Standards

EN 196-3, EN 13454-2, ASTM C187, ASTM C191

Further Information

NOT AVAILABLE FOR SALE IN THE USA

Spares/Consumables



Consistency Plunger

Code: [38-2010/10](#)

EN Initial and Final Set Needle

Code: [38-2110](#)

Product Group: [Vicat Method](#)

1.13mm diameter and 1.13mm diameter with special footing.



Standards

ASTM C187, ASTM C191

Further Information

****NOT AVAILABLE FOR SALE IN THE USA****

Spares/Consumables

Consistency Plunger

Code: [38-2010/10](#)

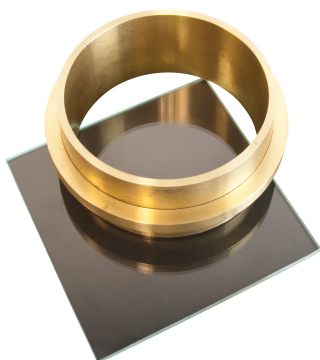


Vicat Mould

Code: [38-2200](#)

Product Group: [Vicat Method, Automatic Vicat](#)

Accessory: manufactured from brass and supplied complete with a ring and glass base plate.



Further Information

****NOT AVAILABLE FOR SALE IN THE USA****

Spares/Consumables

Consistency Plunger

Code: [38-2010/10](#)





Buoyancy Balance 6Kg X 0.1G. Supplied with Support Frame Water Tank & Suspension Hook.

Code: [42-1000/01](#)

Product Group: [Particle Density \(specific gravity\) and Water Absorption for Coarse Aggregates](#)

The buoyancy balance system developed by ELE consists of a rigid support frame, incorporating a water tank mounted on a platform. A mechanical lifting device is used to raise the water tank through the frame height immersing the specimen suspended below the balance. The balance supplied may also be used as a standard weighing device, thus providing a versatile and comprehensive weighing system in the laboratory. 6000 g x 0.1 g supplied with frame, water tank and suspension hook.

Standards

EN 1097-6, EN 12697-6, BS 812, ASTM C127, AASHTO T85

Further Information

****NOT AVAILABLE FOR SALE IN THE USA****

For 220 - 240 V AC, 50 - 60 Hz, 1 ph.



3.00" Rubber Mounted TRL (55) Slider for 42-6000

Code: [42-6000/12](#)

Product Group: [Skid Resistance Testing](#), [Skid Resistance Testing](#)

Slider for car tyres on asphalt



Flow Table

Code: [38-6000](#)

Product Group: [Flow and Workability of Mortar Lime](#)

Manufactured from cast bronze as specified in BS and ASTM C230. Complete with Tripod and Baseplate.

Standards

BS 4551-1, BS 3892-1, ASTM C230

Further Information

NOT AVAILABLE FOR SALE IN THE USA



Flow Mould

Code: [38-6040](#)

Product Group: [10" Flow Table, Flow and Workability of Mortar Lime](#)

Manufactured from bronze as specified in BS and ASTM.

Standards

ASTM C230



Crack Detection Microscope Magnification X 40 Measuring Range of 4mm In 0.02mm Divisions

Code: 35-2505

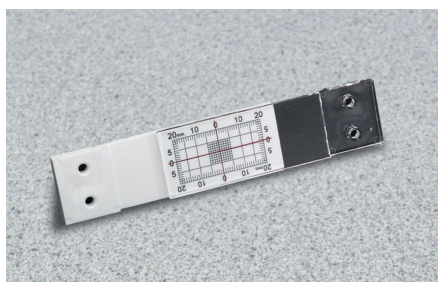
Product Group: Crack Detection, Crack Detection Microscope

Specifically designed for measuring crack width in concrete, this high definition microscope operates via an adjustable light source provided by high power batteries.

Supplied in a pocket sized carrying case.

Specification

Dimensions (l x w x h)	40 x 90 x 150 mm (in case)
Magnification	x 40
Measuring range	4 mm, 0.02 mm divs
Weight	550 g
Dimensions (l x w x h)	40 x 90 x 150 mm (in case)
Magnification	x 40
Measuring range	4 mm, 0.02 mm divs
Weight	550 g
Magnification	X 35 .
Measuring Range	4 mm.
Divisions	0.02 mm.
Dimensions	1.5â€³ x 3.5â€³ x 6â€³ (40 x 90 x 150 mm) in case.
Weight	Net 19.4 oz. (550 g).



Calibrated Crack Monitor

Code: [35-2510](#)

Product Group: [Calibrated Crack Monitor](#)

Includes crack progress chart.

Specification

Construction	10 Hz to 100 kHz in 4 switched ranges.
Discrimination	0.5 mm.
Max. Crack Width Movement	3/4" (20 mm); longitudinal.
Max. Upward Movement	3/8" (10 mm); transverse.
Coeff. Of Thermal Expansion	3.80 x 10 ⁻⁵ in/in/°F. (6.84 x 10 ⁻⁵ mm/mm/°C).
Dimensions	Grid: 1-1/2" x 3/4" (40 x 20 mm). Plates: 1-1/4" x 4" x 1/4" (32 x 102 x 6.3 mm) ea. Overall: 1-1/4" x 5-3/4" x 1/4" (32 x 146 x 6.3 mm).
Weight	Net 2 oz. (57 g).



100 Litre Drying Oven

Code: [78-1225/01](#)

Product Group: [Oven Drying Method](#), [Oven Drying Method](#), [Oven Drying Method](#)

Standards

BS 2648, BS 598, BS 1377, BS 1924

Further Information

****NOT AVAILABLE FOR SALE IN THE USA****



Mortar and Pestle Porcelain.

Code: [23-3505](#)

Product Group: [Sample Reduction](#)

Thick walled porcelain mortar; 107mm internal diameter and porcelain pestle.



Bench-Mounting Mixer 5 Litre Capacity Complete with Bowl Beater and Whisk. 220-240V 50Hz 1Ph.

Code: [23-6191/01](#)

Product Group: [Sample Mixers](#), [Mixing](#), [Sample Mixers](#)

The mixer has two electrically switched mixing speeds which obviates the need to switch off during speed selection. The mixing head comprises a beater which contra-rotates about a central shaft using planetary gearing. A lever-acting lifting device facilitates the insertion and removal of the bowl. This mixer is suitable for the mixing of soil samples, mortar, bituminous mixtures and associated materials where comparatively small samples are being prepared. Supplied with stainless steel bowl, beater and whisk.

Standards

BS 598-107, BS 1377-1, BS 1924-1

Further Information

****NOT AVAILABLE FOR SALE IN THE USA****

Specification

Dimensions	545 x 380 x 550 mm
Beater Speeds (rpm) low, intermediate, high	136, 281, 580
Central shaft speeds (rpm) low, high	60, 124, 255
Rated power	500 W
Weight	20.2 kg

Spares/Consumables



Stainless Steel Bowl 4.73 Litres.

Code: [23-6191/10](#)



Measuring Cylinder - Glass 250 ml

Code: [82-0420](#)

Product Group: [Measuring Cylinders, BS](#)

Soda glass, spouted, BS EN 4788.

Further Information

****NOT AVAILABLE FOR SALE IN THE USA****



Measuring Cylinder - Glass 100 ml

Code: [82-0380](#)

Product Group: [Measuring Cylinders, BS, Volumetric Shrinkage](#)

Soda glass, spouted, BS EN 4788.

Further Information

****NOT AVAILABLE FOR SALE IN THE USA****



Water Bath - 12 litres

Code: [82-8500/01](#)

Product Group: [Water Baths](#)

Further Information

****NOT AVAILABLE FOR SALE IN THE USA****

Specification

Capacity	12 litres
Working area	210 x 300 mm
Tray	Yes
Max Water Depth	130 mm
Controller	Digital
Temperature range and stability °C	0 to 99.9 ± 0.1
Electrical supply	220 – 240 V AC, 50 - 60 Hz, 1 ph
Rated power kW	1.5
Weight	8.1 kg



Conical Flask (Erlenmeyer) - 250 ml

Code: [82-1140](#)

Product Group: [Funnels and Flasks](#)

Borosilicate glass, wide mouth graduated, 50 ml sub-divisions

Further Information

****NOT AVAILABLE FOR SALE IN THE USA****



Bulb Pipette

Code: [82-1300](#)

Product Group: [Pipettes and Burettes](#)

BS 1583. 50 ml.

Further Information

****NOT AVAILABLE FOR SALE IN THE USA****



Beaker - 250 ml

Code: [82-0140](#)

Product Group: [Beakers and Covers](#)

Borosilicate glass, squat form.

Further Information

****NOT AVAILABLE FOR SALE IN THE USA****



Spatula 150 mm

Code: [81-0120](#)

Product Group: [Spatulas](#)

Further Information

****NOT AVAILABLE FOR SALE IN THE USA****



Gyratory Compactor to EN 12697-31, 10, ASTM D6925, SHRP M-002, AASHTO T312, inc. PC 220-240V 50Hz

Code: 45-6750/01

Product Group: [Gyratory Compaction](#)

One of the best methods of laboratory compaction is considered to be Gyratory for not only the material's assessment of compactibility, but also the production of test samples. The method achieves this by the application of a vertical stress, typically 600 kPa via platens to a mass of asphaltic mixture inside a 100 or 150mm diameter mould. Whilst platens are kept parallel and horizontal, the longitudinal axis of the mould is gyrated at a fixed angle to the vertical axis.

During the test process, the height of the specimen is measured automatically and the mixture density and void content are calculated.

Compaction data is displayed in real time (graphical and tabular) and is available for download to MS Excel(tm) The operator has the ability to choose whether to compact for a certain number of gyrations or until a target mixture density or void content is achieved.

Further Information

Features:

- Full compliance to EN 12697 part 10 and 31
- Configurable to comply with SHRP Superpave
- Both 150mm and 100mm moulds can be tested without any modification
- Automatic mould insertion and retraction
- Cold mix (emulsion) materials can be compacted, with fluid collection facility
- Data acquisition and control via host desktop PC
- Export compaction data to MS Excel(tm)
- UKAS traceable factory calibration
- Can accept moulds up to 300mm in height

Product Specification:

- High stability steel frame with low flex and distortion
- A 95mm pneumatic cylinder
- Safety gates with interlock
- Specimen table
- Accurate stress control via high precision regulator
- High quality inverter for accurate speed control
- Specimen height measurement via linear potentiometer
- Highly durable wheels for ease of movement
- 16bit control and data acquisition
- PC included

Software:

- User-friendly, intuitive and reliable Windows(tm) software
- 2 methods of compaction - no. of gyrations and target density
- User guided step-by-step through compaction
- Real-time display of current height, density and void content
- Software communicates with the gyratory compactor via USB interface
- Utilities are included for transducer check, diagnostic routines and calibration

Specification

Stress	600 kPa nominal, 1000 kPa Max
Mixture types	Wet and Dry
Machine speed	30 rpm
Angle of gyration	0.2 to >2°
Electrical supply	220-240 V 50Hz (16 amp)
Sample sizes	100 and 150 mm dia
Compressed air supply	7-10 bar, 350 L p/m
Dimensions (WxHxL)	790 x 995 x 1920



100mm Dia mould & platens

Code: [45-6750/10](#)

Product Group: [Moulds for Gyratory Compactors](#)

34 x 18.5 x 18.5 cms



150mm Dia mould & platens

Code: [45-6750/12](#)

Product Group: [Moulds for Gyratory Compactors](#)

34 x 18.5 x 18.5 cms



150 mm filter papers (pack of 100)

Code: [45-6750/22](#)

Product Group: [Moulds for Gyratory Compactors](#)

150 mm x 150 mm



100mm filter papers (pack of 100)

Code: [45-6750/24](#)

Product Group: [Moulds for Gyratory Compactors](#)

100 x 100 mm



Small air compressor for 45-6750

Code: [45-6750/28](#)

Product Group: [Accessories for Gyratory Compactor](#)

Compressed air supply 7-10 bar, 350 Litres per minute



Specimen Extruder

Code: [45-6710](#)

Product Group: [Accessories for Gyratory Compactor](#)



Rolling Thin-Film Oven 220-240V 50/60 Hz

Code: 46-4150/01

Product Group: [Asphalt and Bitumen Ovens](#)

The Rolling Thin-Film Oven (RTFO) procedure provides simulated short term aged asphalt binder for physical property testing. Asphalt binder is exposed to elevated temperatures to simulate manufacturing and placement ageing. The RTFO also provides a quantitative measure of the volatiles lost during the ageing process.

The exterior is constructed from sheet steel finished in an easy clean powder coated paint and the interior chamber is made from stainless steel.

The control system comprises of a microprocessor digital controller and overheat thermostat with calibrated scale and tamper-proof lock.

Further Information

- Complies to the requirements of ASTM D2872
- Internal dimensions (mm): 380 high x 480 wide x 440 deep
- External dimensions (mm): 800 high x 710 wide x 660 deep (add 40mm for door handle)
- Double wall construction with high density thermal insulation
- Non-rusting grade 304 stainless steel interior
- Easy clean powder painted steel exterior in light grey (RAL 7035) textured finish
- Top mounted fan constructed with an air plenum as described in ASTM D2872
- Fitted with a squirrel-type fan blade for better uniformity of air and temperature distribution
- Equipped with air jet for blowing heating air into each bottle at its lowest point of travel
- Base mounted elements
- Vented to atmosphere
- Single front opening, side hinged door with positive quarter turn latching mechanism
- Double glazed window in door for viewing the test chamber

Top mounted controls comprise:

- Dual display microprocessor digital control
- Independent overheat thermostat
- Mains switch
- Flow meter to control air flow
- Indicator lamps
- 1500 watts
- Supplied with built-in 305mm diameter vertical circulator carriage for 8 sample containers
- Glass samples rotate at 15 rpm \pm 0.2rpm (glass containers supplied separately)
- Temperature is controlled and pre-set at 163°C \pm 1°C

Specification

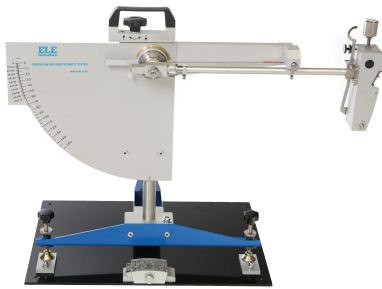
Max Temp (°C)	163°C \pm 1°C (preset)
Dimensions: Internal (HxWxD)	380 x 480 x 440 mm

Product Sheet

www.ele.com
+44 (0) 01525 249 200



Dimensions: External (HxWxD)	800 x 710 x 660 mm
Insulation	Double wall
Internal material	304 stainless steel
Max power (W)	1500



Pendulum Skid Resistance Tester

Code: 42-6000

Product Group: [Skid Resistance Testing](#), [Skid Resistance Testing](#)

The Pendulum Skid Resistance Tester was originally designed in the 1940s in the USA, and further developed in the 1960s at the TRL (Transport Research Laboratory) for the testing of road surfaces.

The device measures the frictional resistance between a rubber slider mounted on the end of a pendulum arm and the surface to be tested. This provides road engineers with a method of checking the resistance of wet and dry surfaces to slipping and skidding, both in the lab and insitu.

It operates by a pendulum rotating about a spindle which is attached to a vertical pillar. At the end of the tubular arm a head of known mass is fitted with a rubber slider. The pendulum is released from a horizontal position so that it strikes the sample surface at a constant speed. The distance travelled by the head after hitting the sample is determined by the friction of the sample surface.

Further Information

Applications:

- Assessment of surface friction and skid resistance properties
- Testing of aggregates in the PSV (Polished Stone Value) test
- Testing of new road surface materials
- Testing of pedestrian pavements
- RTA (road traffic accidents)
- Litigation investigations

Features:

- Designed for lab and on site road surface testing
- Factory calibrated to EN1097-8
- Low friction arm, and lightweight pointer
- Supplied with 'F' scale for use with small slider set for 76mm slide length (PSV test)
- Highly repeatable
- Supplied with carrying case

Specification

Dimensions (WxDxH)	695 x 295 x 695 mm
Volume	0.15m3
Weight	30 kg





Base Plate for Skid Resistance Tester for lab testing

Code: [42-6200](#)

Product Group: [Skid Resistance Testing](#), [Skid Resistance Testing](#)



Set of 3 Spreader Feet for Skid Resistance Tester for in-situ testing

Code: [42-6000/10](#)

Product Group: [Skid Resistance Testing](#), [Skid Resistance Testing](#)



Asphalt Binder Analyser 220-240V 50/60 Hz

Code: 46-6100/01

Product Group: Ignition Method

Designed to measure the asphalt binder content of hot mix asphalt (HMA) using loss on ignition, in accordance with AASHTO T 308-10, ASTM D6307-10 and BSEN 12697-39:2012.

Further Information

The integral microprocessor controlled weighing and calculation system is configurable to allow variations to the standard test method. Test result reports are available in both printed and software format. The high temperature afterburner minimises the production of noxious waste fumes. Supplied complete with 2 sets of sample baskets.

Features:

- Designed to measure asphalt binder content by loss on ignition
- Avoids health, environmental and waste management issues
- Avoids the expense associated with older solvent extraction methods
- Reduced emissions due to high temperature afterburner
- Controlled via a multi-lingual touchscreen interface
- English, Spanish, French, Chinese, Italian and Russian language display
- Other languages are available to order
- Automatic calculation of final sample weight and binder % result
- Adjustable aggregate correction factor
- Average test times from 20 mins for 6 mm aggregates, to 45 mins for 40 mm aggregates
- Permanent (dot-matrix) printed reports
- USB data output compatible with most spread sheets
- Easy naming, storage and recall of recipes that can be transferred between units
- Simplified menu structure with secure 'Supervisor' and 'Operator' settings
- Metal waste gas extraction pipe
- Factory fitted thermocouple access port, if temperature calibration is to be carried out
- Precise weight measurements, displayed to 0.1g resolution
- Capacity for large sample sizes for more accurate results (max. sample is 4.5kg)

Specification

Max Temp (°C)	750
Dimensions: Internal (HxWxD)	220 x 450 x 350 mm
Dimensions: External (HxWxD)	980 x 600 x 775 mm

Product Sheet

www.ele.com
+44 (0) 01525 249 200



Type
Thermocouple type
Max power (W)

Bench-top
K
8000



Clamped Boss Load Ring - 28.0 kN

Code: 78-0760

Product Group: Clamped Boss Load Rings, Digital Tritest 50 Load Frame, Proving Rings, CBR-Test 50 Machine, Conversion of In-situ to Laboratory CBR, CBR Loading Press, Hand-Operated, Force measurement, Load Measurement, Load Measurement

Standards

BS 1377, BS 1924

Specification

Capacity: kN, kgf, lbf	28.0, 2800, 6000
Typical Design sensitivity: N/div, kgf/div, lbf/div	25.5, 2.54, 5.45
Overall height mm	248
Approx weight kg	5.4
Capacity	28 kN
Value of CBR	Average range of CBR
Capacity - lbf	6,000
Capacity - kN	28
Capacity - kgf	2,800
Typical Design Sensitivity - lbf/div	5.45
Typical Design Sensitivity - kN/div	25.5
Typical Design Sensitivity - Kg/div	2.54
Overall Height	9.76" (248 mm)
Approx Weight	11.9 lbs.(5.4 kg)

Spares/Consumables



Spare Dial Indicator for Load Rings

Code: 78-5461



Cbr Penetration Piston (Adjustable).

Code: [24-9183](#)

Product Group: [In-situ CBR](#), [Conversion of In-situ to Laboratory CBR](#), [Penetration Measurement](#)

As 24-9182 but with a coarse stem adjustment. This piston is particularly useful for in-situ testing.

Standards

BS 1377, BS 1924



Penetration Dial Gauge BS

Code: [24-9186](#)

Product Group: [In-situ CBR](#), [Conversion of In-situ to Laboratory CBR](#), [Penetration Measurement](#)

Complete with rack extensions and chisel edge anvil. 25 mm travel x 0.01 mm divisions.

Standards

BS 1377, BS 1924



Bracket and Adaptor. Dual Purpose Mounting Bracket for CBR Penetration Gauges EL24-9184/EL24-9186

Code: 24-9188

Product Group: In-situ CBR, Conversion of In-situ to Laboratory CBR, Penetration Measurement

Dual purpose mounting bracket for CBR penetration dial gauges. Allows gauge to be fixed to penetration piston or load ring.

Standards

BS 1377, BS 1924



45kN (10000Lb) Capacity Mechanical Jack.

Code: [24-9290](#)

Product Group: [In-situ CBR](#), [Conversion of In-situ to Laboratory CBR](#)

The body is corrosion protected and houses an enclosed worm and wheel gear. The gear ratio has been carefully selected to provide a handwheel speed that can be comfortably maintained, particularly with soils of high CBR value. A quick-release device in the screwjack allows the plunger to be rapidly adjusted prior to the test.

Standards

BS 1377, BS 1924



Ball Seating for EL 24-9290 45 kN Jack

Code: [24-9300](#)

Product Group: [In-situ CBR](#)

For fitting between the mechanical jack and reaction point. The ball seating is used when testing on undulating ground to ensure that the jack, load measuring ring and penetration piston are truly vertical. Non-axial loading of the load ring will give false results and will eventually damage the ring itself.

Standards

BS 1377, BS 1924



Set of Extension Rods Complete

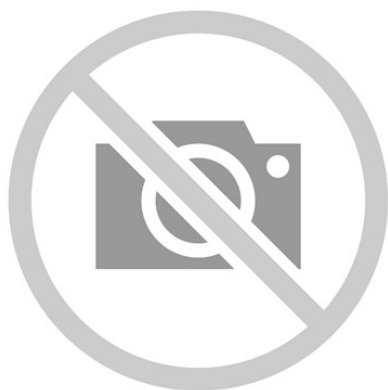
Code: [24-9308](#)

Product Group: [In-situ CBR](#)

Made from high quality steel with large section thread for quick assembly.

Standards

BS 1377, BS 1924



Datum Bar Assembly.

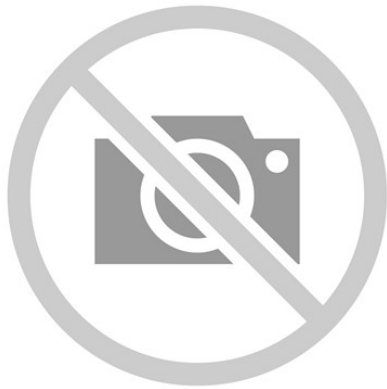
Code: [24-9312](#)

Product Group: [In-situ CBR](#)

Comprising 2 tripod stands and a datum bar.

Standards

BS 1377, BS1924



10Lb (4.5Kg) Annular Surcharge Weight.

Code: [24-9320](#)

Product Group: [In-situ CBR](#)

Standards

BS 1377, BS 1924



10Lb (4.5Kg) Slotted Surcharge Weight.

Code: [24-9322](#)

Product Group: [In-situ CBR](#)

Standards

BS 1377, BS 1924



Land Rover Bracket to Attach EL29-200 Jack. for Land Rovers Models 90 & 110 From 1983 Onwards.

Code: [24-9298](#)

Product Group: [In-situ CBR](#)

Fits all models in Land Rover series 90 and 110.

Standards

BS 1377, BS 1924



Porcelain Crucible

Code: [82-3320](#)

Product Group: [Bottles and Crucibles,](#)
[Loss-on-Ignition](#)

30ml capacity complete with lid.

Further Information

****NOT AVAILABLE FOR SALE IN THE USA****



Buoyancy Balance

Code: [34-8100/09](#)

Product Group: [Hardened Concrete - Buoyancy Balance, Percentage Refusal Density \(PRD\)](#)

Standards

EN 12697-32, EN 13280-4, BS 598-104

Further Information

****NOT AVAILABLE FOR SALE IN THE USA****



BS Block Platens & Platen Handling Assembly for 2000kN & 3000kN BS Frames.

Code: [37-4830](#)

Product Group: [Platen Assemblies](#)

Further Information

****Not available for sale in the USA****



Extended Front Safety Gate for Use with 2000kN BS/EN Load Frames Fitted with Rectangular Platens.

Code: [37-4835](#)

Product Group: [Platen Assemblies](#)

For use with 2000 kN capacity machines fitted with rectangular platens.

Further Information

****Not available for sale in the USA****



Autoclave

Code: [38-3800/01](#)

Product Group: [Soundness of Portland Cement by the Autoclave Method](#)

The autoclave provides high pressure steam curing of the specimens and is supplied with a safety valve pressure gauge and controlled heater unit. The pressure vessel is independently certified and certificated. A specimen rack with capacity for 12 specimens included. The unit conforms to the requirements of ASTM C151.

220-240 V 50/60 Hz 1ph

Standards

ASTM C151

Further Information

****NOT AVAILABLE FOR SALE IN THE USA****

Spares/Consumables



Lid Sealing Gasket

Code: [38-3800/13](#)



Pundit Lab Ultrasonic Concrete Tester 110-240V 50/60Hz 1Ph

Code: [35-2302/09](#)

Product Group: [Pundit Lab](#), [Pundit Lab Ultrasonic Concrete Test](#)

Pundit Lab is the most versatile Pundit to date. It has all the functions of the classic Pundit 7, but offers additional benefits.

Designed with laboratory use in mind, its compact size, rugged construction and optimized power consumption make it equally suitable for on-site use.

Along with the traditional transit time and pulse velocity measurement, Pundit Lab offers path length measurement, perpendicular crack depth measurement and surface velocity measurement.

Optimized pulse shaping gives greater transmission range at lower voltage levels. This coupled with automated combination of the transmitter voltage and the receiver gain ensures an optimum received signal level, ensuring accurate and stable measurements.

The waveform can be viewed either via an external oscilloscope connection or directly on a connected PC screen.

Full remote control capability completes the package.

Complete with two 54 kHz transducers each with 3.6 metres of cable, coupling agent, carrying case and instruction manual.

Further Information

For 110 - 240 V AC, 50 - 60 Hz, 1 ph.

Spares/Consumables



Ultrasound Couplant Supplied In 250ml bottle

Code: [35-2305](#)



Rock Core Drill Supplied with 2 X Nx Core Drill Bit

Code: [70-0095/01](#)

Product Group: [Sample Preparation](#)

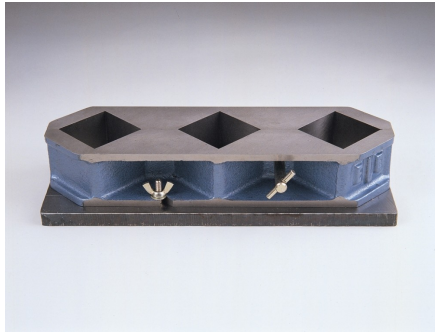
Cores may be cut from regular or irregular samples of rock or other material for end preparation prior to strength testing. Side guards and a drain tray provide protection against water spray and a sliding front allows access to the specimen clamp. The clamp provides maximum orientation for securing irregular block samples.

Further Information

Supplied complete with 2 x NX Core Barrel. For 220-240 V AC, 50 Hz, 1ph.

Specification

Dimensions (l x w x h)	500 x 500 x 1160 mm
Drill Head Travel	630 mm
Drill Speeds	350 and 900 rpm
Weight	80 kg



Three-gang Mould

Code: [39-0410](#)

Product Group: [Moulding of 50 mm and 100 mm Specimens](#)

For 50mm mortar cubes. Manufactured from cast iron with simple cube release mechanism.

Standards

BS 1881-131, ASTM C109

Further Information

****NOT AVAILABLE FOR SALE IN THE USA****



Binoculars, 10x50

Code: [500-190](#)

Product Group: [Surveying Equipment](#)

Centre-wheel focusing and multicoated optics.
Particularly suited to twilight and night observations.
Supplied complete with carrying case.



1000/500kN Motorised Compression/Tension Machine (complete with grips) 220-240V 50/60Hz 1Ph.

Code: 36-1410/01

Product Group: Compression Tension Machine

- Compression testing of concrete cubes and cylinders
- Calibration in compression is accurate to 1% of indicated load, satisfying BS EN ISO 7500-1; ASTM E4
- Self-aligning upper platen for compression tests
- Easily fitted grips for tension testing

The load frame is of high quality steel construction with a fixed upper head carrying a ball-seated platen. The ram carrying the lower platen is contained in the base of the frame and is protected by a shroud. Sufficient clearance between the platens allows the compression testing of concrete cylinders up to 160 mm diameter by 320 mm long. To allow for the compression testing of concrete cubes, a range of distance pieces is available.

Tension tests on steel reinforcing bars are conducted by replacing the platens with special grips. As standard the machine is supplied with the following size grips for testing bars, 10 mm, 12 mm, 20 mm, and 25 mm diameter. The machine is motorised, incorporating a change-over lever to select either compression or tension output from the pump.

Further Information

****NOT AVAILABLE FOR SALE IN THE USA****

220-240V 50/60 Hz 1Ph.



Standard Distance Piece - 80 mm Depth

Code: [37-5050](#)

Product Group: [Distance Pieces](#)

Further Information

****Not available for sale in the USA****



Standard Distance Piece - 100 mm Depth

Code: [37-5100](#)

Product Group: [Distance Pieces](#)

Further Information

****Not available for sale in the USA****



Slump Test Set BS & ASTM. C/W Slump Cone Base Plate Steel Rule Tamping Rod & Funnel.

Code: [34-0192](#)

Product Group: [Slump Test](#)

BS and ASTM comprising of slump cone, base plate, steel rule, tamping rod and funnel.

Further Information

****NOT AVAILABLE FOR SALE IN THE USA****



150mm Cube Mould 4-Part Clamp Type. Cast Iron Construction. BS EN Compliant.

Code: [34-4570](#)

Product Group: [Cube Moulds](#), [Cube Moulds](#)

4-part with clamp attached base plate.

Specification

Construction

Bolted sides and clamped base plate

Finish

Painted

Weight

42 lb (19.1 kg)



300mm Dia BS Sieve 38 Mic Stainless Steel Mesh. Fitted with Reinforcing Mesh.

Code: 79-2040

Product Group: 300mm Diameter BS Sieves, 300mm Diameter BS Sieves, 300mm Diameter BS Sieves

Standards

ISO 565, BS410-1, EN933-2, ISO 3310

Further Information

NOT AVAILABLE FOR SALE IN THE USA



300mm Dia BS Sieve 63 Mic Stainless Steel Mesh. Fitted with Reinforcing Mesh.

Code: 79-2070

Product Group: 300mm Diameter BS Sieves, 300mm Diameter BS Sieves, 300mm Diameter BS Sieves

Standards

BS 410-1, ISO 3310, EN933-2, ISO 565

Further Information

NOT AVAILABLE FOR SALE IN THE USA



300mm Dia BS Sieve 75 Mic Stainless Steel Mesh. Fitted with Reinforcing Mesh.

Code: 79-2080

Product Group: 300mm Diameter BS Sieves, 300mm Diameter BS Sieves, 300mm Diameter BS Sieves

Standards

BS 410-1, ISO 3310, EN933-2, ISO 565

Further Information

NOT AVAILABLE FOR SALE IN THE USA



300mm Dia Iso:565 3310/1 Sieve 80 Mic Stainless Steel Mesh. Fitted with Reinforcing Mesh.

Code: 79-2085

Product Group: 300mm Diameter BS Sieves, 300mm
Diameter BS Sieves, 300mm Diameter BS Sieves

Standards

BS 410-1, ISO 3310, ISO 565, EN933-2

Further Information

****NOT AVAILABLE FOR SALE IN THE USA****



300mm Dia BS Sieve 90 Mic Stainless Steel Mesh. Fitted with Reinforcing Mesh.

Code: 79-2090

Product Group: 300mm Diameter BS Sieves, 300mm Diameter BS Sieves, 300mm Diameter BS Sieves

Standards

BS 410-1, ISO 3310, EN933-2, ISO 565

Further Information

NOT AVAILABLE FOR SALE IN THE USA



300mm Dia Iso:565 3310/1 Sieve 100 Mic Stainless Steel Mesh. Fitted with Reinforcing Mesh.

Code: 79-2095

Product Group: 300mm Diameter BS Sieves, 300mm
Diameter BS Sieves, 300mm Diameter BS Sieves

Standards

BS 410-1, ISO 3310, EN933-2, ISO 565

Further Information

****NOT AVAILABLE FOR SALE IN THE USA****



300mm Dia BS Sieve 125Mic Stainless Steel Mesh. Fitted with Reinforcing Mesh.

Code: [79-2110](#)

Product Group: [300mm Diameter BS Sieves](#), [300mm Diameter BS Sieves](#), [300mm Diameter BS Sieves](#)

Standards

BS 410-1, ISO 3310, EN933-2, ISO 565

Further Information

****NOT AVAILABLE FOR SALE IN THE USA****



300mm Dia BS Sieve 150Mic Stainless Steel Mesh. Fitted with Reinforcing Mesh.

Code: [79-2120](#)

Product Group: [300mm Diameter BS Sieves](#), [300mm Diameter BS Sieves](#), [300mm Diameter BS Sieves](#)

Standards

BS 410-1, ISO 3310, ISO 565, EN933-2

Further Information

****NOT AVAILABLE FOR SALE IN THE USA****



300mm Dia BS Sieve 180Mic Stainless Steel Mesh. Fitted with Reinforcing Mesh.

Code: [79-2130](#)

Product Group: [300mm Diameter BS Sieves](#), [300mm Diameter BS Sieves](#), [300mm Diameter BS Sieves](#)

Standards

BS410-1, ISO 3310-1, EN933-2, ISO 565

Further Information

****NOT AVAILABLE FOR SALE IN THE USA****



300mm Dia Iso:565 3310/1 Sieve 200 Mic Stainless Steel Mesh. Fitted with Reinforcing Mesh.

Code: 79-2135

Product Group: 300mm Diameter BS Sieves, 300mm
Diameter BS Sieves, 300mm Diameter BS Sieves

Standards

BS 410-1, ISO 3310, EN933-2, ISO 565

Further Information

****NOT AVAILABLE FOR SALE IN THE USA****



300mm Dia BS Sieve 212Mic Stainless Steel Mesh. Fitted with Reinforcing Mesh.

Code: 79-2140

Product Group: 300mm Diameter BS Sieves, 300mm Diameter BS Sieves, 300mm Diameter BS Sieves

Standards

BS 410-1, ISO 3310, EN933-2, ISO 565

Further Information

NOT AVAILABLE FOR SALE IN THE USA



300mm Dia BS Sieve 250Mic Stainless Steel Mesh. Fitted with Reinforcing Mesh.

Code: 79-2150

Product Group: 300mm Diameter BS Sieves, 300mm Diameter BS Sieves, 300mm Diameter BS Sieves

Standards

BS 410-1, ISO 3310, EN933-2, ISO 565

Further Information

NOT AVAILABLE FOR SALE IN THE USA



300mm Dia BS Sieve 300Mic Stainless Steel Mesh. Fitted with Reinforcing Mesh.

Code: 79-2160

Product Group: 300mm Diameter BS Sieves, 300mm Diameter BS Sieves, 300mm Diameter BS Sieves

Standards

BS 410-1, ISO 3310, ISO 565, EN933-2

Further Information

NOT AVAILABLE FOR SALE IN THE USA



300mm Dia Iso:565 3310/1 Sieve 315 Mic Stainless Steel Mesh.

Code: 79-2165

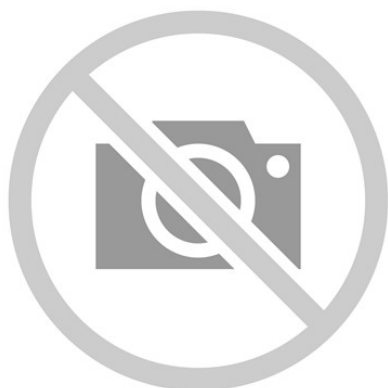
Product Group: 300mm Diameter BS Sieves, 300mm Diameter BS Sieves, 300mm Diameter BS Sieves

Standards

BS 410-1, ISO 3310, EN933-2, ISO 565

Further Information

NOT AVAILABLE FOR SALE IN THE USA



300mm Dia BS Sieve 355Mic Stainless Steel Mesh

Code: 79-2170

Product Group: 300mm Diameter BS Sieves, 300mm Diameter BS Sieves, 300mm Diameter BS Sieves

Standards

BS410-1, ISO 3310-1, ISO 565, EN933-2

Further Information

****NOT AVAILABLE FOR SALE IN THE USA****



300mm Dia Iso:565 3310/1 Sieve 400 Mic Stainless Steel Mesh

Code: 79-2175

Product Group: 300mm Diameter BS Sieves, 300mm
Diameter BS Sieves, 300mm Diameter BS Sieves

Standards

ISO 565, BS 410-1, EN933-2, ISO 3310-1

Further Information

NOT AVAILABLE FOR SALE IN THE USA



300mm Dia BS Sieve 425Mic Stainless Steel Mesh.

Code: 79-2180

Product Group: 300mm Diameter BS Sieves, 300mm Diameter BS Sieves, 300mm Diameter BS Sieves

Standards

BS 410-1, ISO 3310, EN933-2, ISO 565

Further Information

NOT AVAILABLE FOR SALE IN THE USA



300mm Dia BS Sieve 500Mic Stainless Steel Mesh.

Code: 79-2190

Product Group: 300mm Diameter BS Sieves, 300mm Diameter BS Sieves, 300mm Diameter BS Sieves

Standards

BS 410-1, ISO 3310, ISO 565, EN933-2

Further Information

****NOT AVAILABLE FOR SALE IN THE USA****



300mm Dia BS Sieve 600Mic Stainless Steel Mesh.

Code: 79-2200

Product Group: 300mm Diameter BS Sieves, 300mm Diameter BS Sieves, 300mm Diameter BS Sieves

Standards

BS 410-1, ISO 3310, ISO 565, EN933-2

Further Information

NOT AVAILABLE FOR SALE IN THE USA



300mm Dia Iso:565 3310/1 Sieve 630 Mic Stainless Steel Mesh.

Code: 79-2205

Product Group: 300mm Diameter BS Sieves, 300mm Diameter BS Sieves, 300mm Diameter BS Sieves

Standards

BS 410-1, ISO 3310, ISO 565, EN933-2

Further Information

****NOT AVAILABLE FOR SALE IN THE USA****



300mm Dia BS Sieve 850Mic Stainless Steel Mesh.

Code: 79-2220

Product Group: 300mm Diameter BS Sieves, 300mm Diameter BS Sieves, 300mm Diameter BS Sieves

Standards

BS 410-1, ISO 3310, ISO 565, EN933-2

Further Information

****NOT AVAILABLE FOR SALE IN THE USA****



300mm Dia BS Sieve 1.00mm Stainless Steel Mesh.

Code: 79-2230

Product Group: 300mm Diameter BS Sieves, 300mm Diameter BS Sieves, 300mm Diameter BS Sieves

Standards

BS 410-1, ISO 3310, ISO 565, EN933-2

Further Information

NOT AVAILABLE FOR SALE IN THE USA



300mm Dia BS Sieve 1.18mm Stainless Steel Mesh.

Code: 79-2240

Product Group: 300mm Diameter BS Sieves, 300mm Diameter BS Sieves, 300mm Diameter BS Sieves

Standards

BS 410-1, ISO 3310, EN933-2, ISO 565

Further Information

****NOT AVAILABLE FOR SALE IN THE USA****



300mm Dia Iso:565 3310/1 Sieve 1.25mm Stainless Steel Mesh.

Code: 79-2245

Product Group: 300mm Diameter BS Sieves, 300mm Diameter BS Sieves, 300mm Diameter BS Sieves

Standards

BS 410-1, ISO 3310, ISO 565, EN933-2

Further Information

****NOT AVAILABLE FOR SALE IN THE USA****



300mm Dia Iso:565 3310/1 Sieve 1.60mm Stainless Steel Mesh.

Code: 79-2255

Product Group: 300mm Diameter BS Sieves, 300mm Diameter BS Sieves, 300mm Diameter BS Sieves

Standards

BS 410-1, ISO 3310, ISO 565, EN933-2

Further Information

NOT AVAILABLE FOR SALE IN THE USA



300mm Dia BS Sieve 1.70mm Stainless Steel Mesh.

Code: 79-2260

Product Group: 300mm Diameter BS Sieves, 300mm Diameter BS Sieves, 300mm Diameter BS Sieves

Standards

BS 410-1, ISO 3310, EN933-2, ISO 565

Further Information

NOT AVAILABLE FOR SALE IN THE USA



300mm Dia BS Sieve 2.00mm Stainless Steel Mesh.

Code: 79-2270

Product Group: 300mm Diameter BS Sieves, 300mm Diameter BS Sieves, 300mm Diameter BS Sieves

Standards

BS 410-1, ISO 3310, ISO 565, EN933-2

Further Information

****NOT AVAILABLE FOR SALE IN THE USA****



300mm Dia BS Sieve 2.36mm Stainless Steel Mesh.

Code: 79-2280

Product Group: 300mm Diameter BS Sieves, 300mm Diameter BS Sieves, 300mm Diameter BS Sieves

Standards

BS 410-1, ISO 3310, ISO 565, EN933-2

Further Information

****NOT AVAILABLE FOR SALE IN THE USA****



300mm Dia Iso:565 3310/1 Sieve 2.50mm Stainless Steel Mesh.

Code: 79-2285

Product Group: 300mm Diameter BS Sieves, 300mm Diameter BS Sieves, 300mm Diameter BS Sieves

Standards

BS 410-1, ISO 3310, ISO 565, EN933-2

Further Information

****NOT AVAILABLE FOR SALE IN THE USA****



300mm Dia BS Sieve 2.80mm Stainless Steel Mesh.

Code: 79-2290

Product Group: 300mm Diameter BS Sieves, 300mm Diameter BS Sieves, 300mm Diameter BS Sieves

Standards

BS410-1, ISO 3310-1, ISO 565, EN933-2

Further Information

NOT AVAILABLE FOR SALE IN THE USA



300mm Dia BS Sieve 3.35mm Stainless Steel Mesh.

Code: 79-2300

Product Group: 300mm Diameter BS Sieves, 300mm Diameter BS Sieves, 300mm Diameter BS Sieves

Standards

BS 410-1, ISO 3310, EN933-2, ISO 565

Further Information

NOT AVAILABLE FOR SALE IN THE USA



300mm Dia BS Sieve 4.00mm Stainless Steel Mesh.

Code: 79-2310

Product Group: 300mm Diameter BS Sieves, 300mm Diameter BS Sieves, 300mm Diameter BS Sieves

Standards

ISO 565, EN933-2

Further Information

****NOT AVAILABLE FOR SALE IN THE USA****