



IF IT'S WORTH BUILDING, IT'S WORTH TESTING

This wishlist was generated on 13/09/2016, and contains the following Products:

36-1410/01

**1000/500kN Motorised Compression/Tension Machine (complete with grips)
220-240V 50/60Hz 1Ph.**

35-2302/09

Pundit Lab Ultrasonic Concrete Tester 110-240V 50/60Hz 1Ph

38-6000

Flow Table

38-6040

Flow Mould

34-8100/09

Buoyancy Balance

35-2505

**Crack Detection Microscope Magnification X 40 Measuring Range of 4mm In
0.02mm Divisions**

35-2510

Calibrated Crack Monitor



1000/500kN Motorised Compression/Tension Machine (complete with grips) 220-240V 50/60Hz 1Ph.

Code: 36-1410/01

Product Group: [Compression Tension Machine](#)

- Compression testing of concrete cubes and cylinders
- Calibration in compression is accurate to 1% of indicated load, satisfying BS EN ISO 7500-1; ASTM E4
- Self-aligning upper platen for compression tests
- Easily fitted grips for tension testing

The load frame is of high quality steel construction with a fixed upper head carrying a ball-seated platen. The ram carrying the lower platen is contained in the base of the frame and is protected by a shroud. Sufficient clearance between the platens allows the compression testing of concrete cylinders up to 160 mm diameter by 320 mm long. To allow for the compression testing of concrete cubes, a range of distance pieces is available.

Tension tests on steel reinforcing bars are conducted by replacing the platens with special grips. As standard the machine is supplied with the following size grips for testing bars, 10 mm, 12 mm, 20 mm, and 25 mm diameter. The machine is motorised, incorporating a change-over lever to select either compression or tension output from the pump.

Further Information

****NOT AVAILABLE FOR SALE IN THE USA****

220-240V 50/60 Hz 1Ph.



Pundit Lab Ultrasonic Concrete Tester 110-240V 50/60Hz 1Ph

Code: [35-2302/09](#)

Product Group: [Pundit Lab](#), [Pundit Lab Ultrasonic Concrete Test](#)

Pundit Lab is the most versatile Pundit to date. It has all the functions of the classic Pundit 7, but offers additional benefits.

Designed with laboratory use in mind, its compact size, rugged construction and optimized power consumption make it equally suitable for on-site use.

Along with the traditional transit time and pulse velocity measurement, Pundit Lab offers path length measurement, perpendicular crack depth measurement and surface velocity measurement.

Optimized pulse shaping gives greater transmission range at lower voltage levels. This coupled with automated combination of the transmitter voltage and the receiver gain ensures an optimum received signal level, ensuring accurate and stable measurements.

The waveform can be viewed either via an external oscilloscope connection or directly on a connected PC screen.

Full remote control capability completes the package.

Complete with two 54 kHz transducers each with 3.6 metres of cable, coupling agent, carrying case and instruction manual.

Further Information

For 110 - 240 V AC, 50 - 60 Hz, 1 ph.

Spares/Consumables



Ultrasound Couplant Supplied In 250ml bottle

Code: [35-2305](#)



Flow Table

Code: [38-6000](#)

Product Group: [Flow and Workability of Mortar Lime](#)

Manufactured from cast bronze as specified in BS and ASTM C230. Complete with Tripod and Baseplate.

Standards

BS 4551-1, BS 3892-1, ASTM C230

Further Information

****NOT AVAILABLE FOR SALE IN THE USA****



Flow Mould

Code: [38-6040](#)

Product Group: [10" Flow Table, Flow and Workability of Mortar Lime](#)

Manufactured from bronze as specified in BS and ASTM.

Standards

ASTM C230



Buoyancy Balance

Code: [34-8100/09](#)

Product Group: [Hardened Concrete - Buoyancy Balance, Percentage Refusal Density \(PRD\)](#)

Standards

EN 12697-32, EN 13280-4, BS 598-104

Further Information

****NOT AVAILABLE FOR SALE IN THE USA****



Crack Detection Microscope Magnification X 40 Measuring Range of 4mm In 0.02mm Divisions

Code: **35-2505**

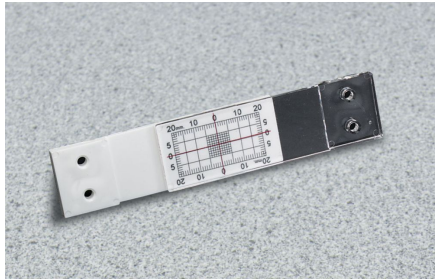
Product Group: **Crack Detection, Crack Detection
Microscope**

Specifically designed for measuring crack width in concrete, this high definition microscope operates via an adjustable light source provided by high power batteries.

Supplied in a pocket sized carrying case.

Specification

Dimensions (l x w x h)	40 x 90 x 150 mm (in case)
Magnification	x 40
Measuring range	4 mm, 0.02 mm divs
Weight	550 g
Dimensions (l x w x h)	40 x 90 x 150 mm (in case)
Magnification	x 40
Measuring range	4 mm, 0.02 mm divs
Weight	550 g
Magnification	X 35 .
Measuring Range	4 mm.
Divisions	0.02 mm.
Dimensions	1.5â€³ x 3.5â€³ x 6â€³ (40 x 90 x 150 mm) in case.
Weight	Net 19.4 oz. (550 g).



Calibrated Crack Monitor

Code: [35-2510](#)

Product Group: [Calibrated Crack Monitor](#)

Includes crack progress chart.

Specification

Construction	10 Hz to 100 kHz in 4 switched ranges.
Discrimination	0.5 mm.
Max. Crack Width Movement	3/4" (20 mm); longitudinal.
Max. Upward Movement	3/8" (10 mm); transverse.
Coeff. Of Thermal Expansion	3.80 x 10 ⁻⁵ in/in/°F. (6.84 x 10 ⁻⁵ mm/mm/°C).
Dimensions	Grid: 1-1/2" x 3/4" (40 x 20 mm). Plates: 1-1/4" x 4" x 1/4" (32 x 102 x 6.3 mm) ea. Overall: 1-1/4" x 5-3/4" x 1/4" (32 x 146 x 6.3 mm).
Weight	Net 2 oz. (57 g).