



IF IT'S WORTH BUILDING, IT'S WORTH TESTING

This wishlist was generated on 14/09/2016, and contains the following Products:

25-3700/01

MultiPlex 50 Load Frame

27-1300/01

DSU Electronic Readout and Control System 220 - 240 V AC 50/60 Hz

27-1559

50kN S-type Load Cell

23-4200

Proctor/Core Cutter Extruder Frame and Hydraulic Jack. Extrudes 100mm/4 Inch Diameter Specimens

45-6310

Compaction Mould

45-6410

Compaction Pedestal BS 598

45-6460

Compaction Hammer

45-6462

Paper Discs

45-6463

Steel Block

45-6850

Breaking Head (Marshall)

82-5247

Portable Thermometer 100 ml

500-162

Nylon-coated steel tape

77-0115

Digital Point Load Test Apparatus.

46-3310/01

Cleveland Flash Cup Apparatus

46-4605

BS/EN Ring and Ball Apparatus

46-4825/01

Magnetic Stirrer

45-5580/01

Isomantle Electric Heater

23-6191/01

Bench-Mounting Mixer 5 Litre Capacity Complete with Bowl Beater and Whisk. 220-240V 50Hz 1Ph.

42-5305/01

Los Angeles Abrasion Machine Meets ASTM and European Standards. 220-240V 50Hz 1Ph.

38-2010

Vicat Frame

38-2110

EN Initial and Final Set Needle

38-2200

Vicat Mould

42-1000/01

Buoyancy Balance 6Kg X 0.1G. Supplied with Support Frame Water Tank & Suspension Hook.

42-6000

Pendulum Skid Resistance Tester

42-6200

Base Plate for Skid Resistance Tester for lab testing

42-6000/10

Set of 3 Spreader Feet for Skid Resistance Tester for in-situ testing

42-6000/12

3.00" Rubber Mounted TRL (55) Slider for 42-6000

MultiPlex 50 Load Frame

Code: 25-3700/01

Product Group: CBR Load Frames, Marshall Load Frames, Triaxial Load Frames

Compact bench mounting load frame designed for performing laboratory CBR, unconfined compression, Quick Undrained Triaxial and Marshall Stability Tests. Has a variable speed of 0.5 to 50mm per minute and features rapid approach of platen.



Standards

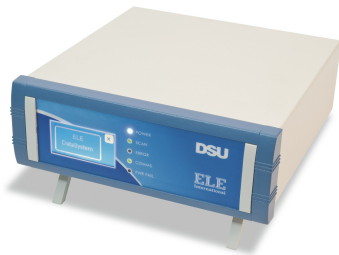
EN 12697-34, BS 598, BS 1377, BS 1924, ASTM D1883, EN 12697-23, EN 12697-24, EN 13286-47, AASHTO T193, ASTM D2850, ASTM D4767, AASHTO T296, AASHTO T297

Further Information

****NOT AVAILABLE FOR SALE IN THE USA****

Specification

Dimensions (l x w x h)	550 x 400 x 1470 mm
Max vertical clearance	800 mm
Horizontal clearance	265 mm
Platen diameter	133 mm
Platen travel	100 mm
Platen speed range	0.5 to 50 mm/min
Rapid approach speed	40 mm/min
Weight kg	100, (shipping 113 kg)



DSU Electronic Readout and Control System 220 - 240 V AC 50/60 Hz

Code: [27-1300/01](#)

Product Group: [Data Logging with the DSU](#), [Electronic Instrumentation](#), [Data Logging with the DSU](#)

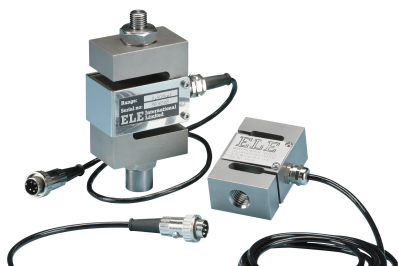
- Download the full brochure here [\[/Page/the-new-dsu\]](#)
- 4 channel automatic control and data-logging unit
- Automatic, dual-frame control
- Performs CBR, Marshall, Unconfined Compression, Direct and Residual Shear, One-Dimensional Consolidation and Unconsolidated Undrained tests
- LAN connection - software can be running anywhere on your server
- Never lose data from power fails - 2 gigabytes of non-volatile memory
- Extended warranty

The Data System Unit (DSU) is a versatile instrument designed to accommodate the general logging requirements of geotechnical and materials testing engineers. Its intelligent interface allows the user to work with a range of different sensors.

Further Information

Become a member of the ELE International web site, add this new product to a wishlist to receive a quote! Click here [\[/Login\]](#)

Please note that this product is not yet available in the USA, we will let you know as soon as it is ready!



50kN S-type Load Cell

Code: [27-1559](#)

Product Group: [Load Measurement](#), [Force measurement](#), [Electronic Instrumentation](#)

Maximum working capacity of 50 kN and excitation 10 V ac/dc with an output of 2.7 mV/V nominal.
Aluminium alloy and stainless steel construction with IP65 environmental protection.

Standards

EN 12697-34

Further Information

****NOT AVAILABLE FOR SALE IN THE USA****



Proctor/Core Cutter Extruder Frame and Hydraulic Jack. Extrudes 100mm/4 Inch Diameter Specimens

Code: 23-4200

Product Group: Soil Extruders, Accessories for manual and automatic compaction

Adaptor plates will be supplied; extrudes samples from BS Compaction Mould, Proctor Mould 100 mm, Core Cutter and Marshall Mould. Maximum extrusion force 20kn.

Standards

BS 1377-1

Further Information

NOT AVAILABLE FOR SALE IN THE USA

Compaction Mould

Code: [45-6310](#)

Product Group: [Accessories for manual and automatic compaction](#), [Asphalt Compaction Mould](#)

Comprising of mould body, baseplate and combined filling/extraction collar.



Standards

EN 12697-30, ASTM D6926, AASHTO T245

Specification

Construction	Machined seamless steel forming mold; base and collar.
Finish	Plated for rust resistance.
Dimensions	4" (101.6 mm) i.d. x 3" (76.2 mm) internal h. with base.
Weight	Net 6 lbs. (2.7 kg).



Compaction Pedestal BS 598

Code: [45-6410](#)

Product Group: [Manual Compaction](#)

Comprising a 300 mm sq x 25 mm thick steel plate complete with 4 tie rods and securing nuts. A mould clamp and hammer guide are fitted to the plate. The unit is supplied complete with a laminated hardwood block.

Standards

EN 12697-30

Further Information

****NOT AVAILABLE FOR SALE IN THE USA****



Compaction Hammer

Code: [45-6460](#)

Product Group: [Manual Compaction, Stability Compaction Hammer](#)

Satisfies BS 598. The hammer has a 4535 g sliding weight with a free fall of 457 mm.

Standards

EN 12697-30, ASTM D6926, AASHTO T245

Specification

Tamping Face	3-7/8" (98 mm) diam.
Hammer	10 lb. (4.54 kg).
Drop	18" (457 mm).
Construction	Machined steel; cast aluminum handle.
Weight	Net 16 lbs. (7.2 kg).

Paper Discs

Code: [45-6462](#)

Product Group: [Accessories for manual and automatic compaction, Filter Paper Discs](#)

Non-absorbent, 99 mm diameter, pack of 100.



Standards

EN 12697-30

Specification

Weight

Net 2.9 oz. (82 g).

Steel Block

Code: [45-6463](#)

Product Group: [Accessories for manual and automatic compaction](#)

100 mm diameter x 50 mm height. For heating the compaction hammer foot.



Standards

EN 12697-30

Further Information

****NOT AVAILABLE FOR SALE IN THE USA****

Spares/Consumables



Baseplate

Code: [45-6310/11](#)



Compaction Mould Body

Code: [45-6310/10](#)



Breaking Head (Marshall)

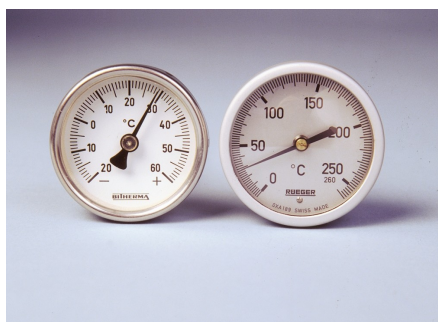
Code: 45-6850

Product Group: [Accessories for the Marshall test](#)

Complete with gauge disc. Supplied without flow meter.

Standards

EN 12697-34



Portable Thermometer 100 ml

Code: [82-5247](#)

Product Group: [Portable Dial-type Thermometers](#)

50 mm diameter dial with a 180 mm long stem.

Further Information

****NOT AVAILABLE FOR SALE IN THE USA****



Nylon-coated steel tape

Code: [500-162](#)

Product Group: [Surveying Equipment](#)

50 m on open frame winder.



Digital Point Load Test Apparatus.

Code: 77-0115

Product Group: [Digital Point Load Tester](#), [Point-Load Strength Test](#)

Originally developed at Imperial College, London, the apparatus comprises a two-column fixed crosshead frame and a hand operated hydraulic jack.

Pressure applied by the jack extends the piston carrying the lower conical point. The upper point is fixed to the crosshead with a scale mounted on the frame to provide specimen diameter information for use in point load strength index calculations. Pressure is indicated directly on the digital readout unit. Loads up to 55 kN can be applied to specimens as large as 101.6 mm in diameter.

The apparatus is supplied complete with heavy-duty face mask.

Standards

EN DD ENV 1997-2, ASTM D5731

Specification

Capacity	55 kN
Maximum sample size	101.6 mm
Load range	0 to 55 kN x 0.001 kN
Weight	25 kg
Capacity	13 ,000 lbf. (55 kN).
Specimen Size	4" (101.6 mm) maximum.
Load Range	0-13 ,000 lbf. (55 kN) x 0.2 lbf. (0.001 kN).
Weight	Net 60 lbs. (27.2 kg).

Spares/Consumables



Set of Cones for Digital Point Load Tester

Code: 77-0115/10



Cleveland Flash Cup Apparatus

Code: [46-3310/01](#)

Product Group: [Cleveland Flash Cup Apparatus](#)

The ELE Semi-Automatic Cleveland Open Cup flashpoint Tester is equipped with an electrically heated cup (with a variable control to set temperature rise rate), a button operated and electrically driven sweep arm and a test flame for use on natural gas. Bench mounted, the unit is incorporated in an easy to clean stainless steel case.

Standards

BS 2000-36, EN ISO 2592, ASTM D92, IP 36

Further Information

****NOT AVAILABLE FOR SALE IN THE USA****

For 220 - 240 V AC, 50 - 60 Hz, 1 ph.

Specification

Temperature Range	Ambient to 400°C
Power	500 W maximum
Ramp rate	Variable, manually controlled
Voltage	220/240 V, 50/60 Hz
Size (HxWxD)	33 x 31 x 29 cm
Weight	6.5 kg



BS/EN Ring and Ball Apparatus

Code: [46-4605](#)

Product Group: [Ring and Ball Apparatus](#)

With 2 shouldered pattern rings, 2 ball-centring guides and 2 balls. The apparatus has a support frame and is retained in a heat resistant container.

Standards

EN 1427, BS 2000-58

Further Information

****NOT AVAILABLE FOR SALE IN THE USA****



Magnetic Stirrer

Code: [46-4825/01](#)

Product Group: [Ring and Ball Apparatus](#)

Utilises a rotating magnetic field to induce variable speed stirring action. A built-in regulating transformer provides fine temperature control of liquid up to a maximum temperature of +150°C. The unit is suitable for use with the Ring and Ball Apparatus.

Standards

EN 1427, BS 2000-58

Further Information

****NOT AVAILABLE FOR SALE IN THE USA****



Isomantle Electric Heater

Code: 45-5580/01

Product Group: Sample Mixers, Mixing, Sample Mixers

For use with 23-6191 Bench Mounting Mixer.

Standards

EN 12697-35

Further Information

NOT AVAILABLE FOR SALE IN THE USA



Bench-Mounting Mixer 5 Litre Capacity Complete with Bowl Beater and Whisk. 220-240V 50Hz 1Ph.

Code: [23-6191/01](#)

Product Group: [Sample Mixers](#), [Mixing](#), [Sample Mixers](#)

The mixer has two electrically switched mixing speeds which obviates the need to switch off during speed selection. The mixing head comprises a beater which contra-rotates about a central shaft using planetary gearing. A lever-acting lifting device facilitates the insertion and removal of the bowl. This mixer is suitable for the mixing of soil samples, mortar, bituminous mixtures and associated materials where comparatively small samples are being prepared. Supplied with stainless steel bowl, beater and whisk.

Standards

BS 598-107, BS 1377-1, BS 1924-1

Further Information

****NOT AVAILABLE FOR SALE IN THE USA****

Specification

Dimensions	545 x 380 x 550 mm
Beater Speeds (rpm) low, intermediate, high	136, 281, 580
Central shaft speeds (rpm) low, high	60, 124, 255
Rated power	500 W
Weight	20.2 kg

Spares/Consumables



Stainless Steel Bowl 4.73 Litres.

Code: [23-6191/10](#)



Los Angeles Abrasion Machine Meets ASTM and European Standards. 220-240V 50Hz 1Ph.

Code: [42-5305/01](#)

Product Group: [Los Angeles Abrasion Machine](#), [Los Angeles Abrasion Machine](#)

The machine consists of a closed hollow cylindrical steel drum rotating around its horizontal axis on ball bearing units mounted on a sturdy base framework.

The drum is driven at a speed of between 30 - 33 rpm via an enclosed belt drive arrangement from an electric motor/gearbox unit situated on the base frame. Inside the drum a full length steel shelf is attached, accessed by a dust-proof opening.

The cylinder incorporates a removable internal shelf, one shelf position is provided to meet the requirements of both the ASTM and EN test standards.

Controls are located easily on the right-hand side of the machine at convenient operator height.

Start and stop push buttons and a subtracting revolution counter allows the user to preset the number of revolutions before an automatic stop.

Standards

EN 1097-2, ASTM C131, ASTM C535, AASHTO T96, NF P18-573

Further Information

Less charges. For 220 - 240 V AC, 50 Hz, 1ph.

Specification

Capacity	5,000 g each of aggregate and charge.
Drum Speed	30-33 rpm.
Frame	Welded structural steel.
Counter	Adjustable; automatic shut-off; push-button reset and adjustment.
Controls	Magnetic motor starter with overload protection and integral On-Off switches.
Dimensions	38.6" w. x 36.2" d. x 38.6" h. (980 x 920 x 980 mm).
Weight	Net 882 lbs. (400 kg).

Product Sheet

www.ele.com
+44 (0) 01525 249 200



Motor

1 HP



Vicat Frame

Code: [38-2010](#)

Product Group: [Vicat Method](#)

Complete with consistency plunger, 10 mm diameter.
Requires one initial or final set needle to make up test weight to 300g.

Standards

EN 196-3, EN 13454-2, ASTM C187, ASTM C191

Further Information

****NOT AVAILABLE FOR SALE IN THE USA****

Spares/Consumables



Consistency Plunger

Code: [38-2010/10](#)

EN Initial and Final Set Needle

Code: [38-2110](#)

Product Group: [Vicat Method](#)

1.13mm diameter and 1.13mm diameter with special footing.



Standards

ASTM C187, ASTM C191

Further Information

NOT AVAILABLE FOR SALE IN THE USA

Spares/Consumables

Consistency Plunger

Code: [38-2010/10](#)

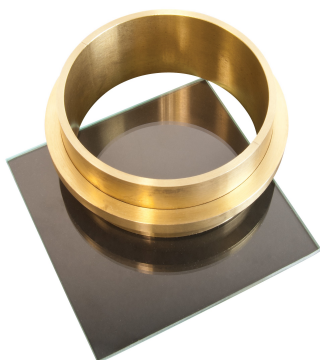


Vicat Mould

Code: [38-2200](#)

Product Group: [Vicat Method, Automatic Vicat](#)

Accessory: manufactured from brass and supplied complete with a ring and glass base plate.



Further Information

****NOT AVAILABLE FOR SALE IN THE USA****

Spares/Consumables

Consistency Plunger

Code: [38-2010/10](#)





Buoyancy Balance 6Kg X 0.1G. Supplied with Support Frame Water Tank & Suspension Hook.

Code: [42-1000/01](#)

Product Group: [Particle Density \(specific gravity\) and Water Absorption for Coarse Aggregates](#)

The buoyancy balance system developed by ELE consists of a rigid support frame, incorporating a water tank mounted on a platform. A mechanical lifting device is used to raise the water tank through the frame height immersing the specimen suspended below the balance. The balance supplied may also be used as a standard weighing device, thus providing a versatile and comprehensive weighing system in the laboratory. 6000 g x 0.1 g supplied with frame, water tank and suspension hook.

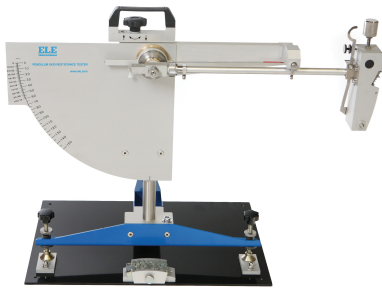
Standards

EN 1097-6, EN 12697-6, BS 812, ASTM C127, AASHTO T85

Further Information

****NOT AVAILABLE FOR SALE IN THE USA****

For 220 - 240 V AC, 50 - 60 Hz, 1 ph.



Pendulum Skid Resistance Tester

Code: 42-6000

Product Group: [Skid Resistance Testing](#), [Skid Resistance Testing](#)

The Pendulum Skid Resistance Tester was originally designed in the 1940s in the USA, and further developed in the 1960s at the TRL (Transport Research Laboratory) for the testing of road surfaces.

The device measures the frictional resistance between a rubber slider mounted on the end of a pendulum arm and the surface to be tested. This provides road engineers with a method of checking the resistance of wet and dry surfaces to slipping and skidding, both in the lab and insitu.

It operates by a pendulum rotating about a spindle which is attached to a vertical pillar. At the end of the tubular arm a head of known mass is fitted with a rubber slider. The pendulum is released from a horizontal position so that it strikes the sample surface at a constant speed. The distance travelled by the head after hitting the sample is determined by the friction of the sample surface.

Further Information

Applications:

- Assessment of surface friction and skid resistance properties
- Testing of aggregates in the PSV (Polished Stone Value) test
- Testing of new road surface materials
- Testing of pedestrian pavements
- RTA (road traffic accidents)
- Litigation investigations

Features:

- Designed for lab and on site road surface testing
- Factory calibrated to EN1097-8
- Low friction arm, and lightweight pointer
- Supplied with 'F' scale for use with small slider set for 76mm slide length (PSV test)
- Highly repeatable
- Supplied with carrying case

Specification

Dimensions (WxDxH)	695 x 295 x 695 mm
Volume	0.15m3
Weight	30 kg





Base Plate for Skid Resistance Tester for lab testing

Code: [42-6200](#)

Product Group: [Skid Resistance Testing](#), [Skid Resistance Testing](#)



Set of 3 Spreader Feet for Skid Resistance Tester for in-situ testing

Code: [42-6000/10](#)

Product Group: [Skid Resistance Testing](#), [Skid Resistance Testing](#)



3.00" Rubber Mounted TRL (55) Slider for 42-6000

Code: [42-6000/12](#)

Product Group: [Skid Resistance Testing](#), [Skid Resistance Testing](#)

Slider for car tyres on asphalt