



IF IT'S WORTH BUILDING, IT'S WORTH TESTING

This wishlist was generated on 05/10/2016, and contains the following Products:

---

36-1410/01

**1000/500kN Motorised Compression/Tension Machine (complete with grips)  
220-240V 50/60Hz 1Ph.**

---

36-3280/01

**ADR Touch 2000 BS EN Compression Machine with Digital Readout and Self Centring Platens.**

---

37-6140

**100kN Flexural and Transverse (Flags) Frame. Supplied Without Specimen Bearers and Fitting Kit.**

---

37-6138

**100kN Flexural Fitting Kit (ADR) Used for Connecting Flexural Frames to ADR Compression Machines.**

---

37-6133

**Ball Seating Assembly 150mm Dia Platens.**

---

37-6330

**Specimen Bearer Assembly**

---

37-6362

**Specimen Bearers for Testing KerBS. Used on 37-6140 Flags Frame.**

---

37-6364

**Specimen Bearers for Testing Flags. Used on 37-6140 Flags Frame.**

---

37-4980

**Standard Distance Piece - 20 mm Depth**

---

37-5000

**Standard Distance Piece - 50 mm Depth**

---

37-5020

**Standard Distance Piece - 60 mm Depth**

---

37-5050

**Standard Distance Piece - 80 mm Depth**

---

37-5100

**Standard Distance Piece - 100 mm Depth**

---

---

34-0192

**Slump Test Set BS & ASTM. C/W Slump Cone Base Plate Steel Rule Tamping Rod & Funnel.**

---

34-0140

**300 mm Stainless Steel Rule.**

---

34-0132

**Graduated Tamping Rod**

---

81-4230

**Sample Tray - 1200 x 1160 x 50 mm**

---

81-0240

**Shovel - With flat blade**

---

88-4340

**Digital Stopwatch**

---

34-0300/01

**Vibro Consistometer**

---

34-0450

**Apparatus for Determining Flow In Concrete (Flow Table).**

---

34-0580

**K-slump Tester**

---

24-9090/01

**Automatic Soil Compactor BS 220-240V 50Hz 1Ph.**

---

24-9000

**BS Standard Compaction Mould 1000Cm Capacity.**

---

24-9002

**Standard Compaction Rammer 2.5Kg BS1377-1975**

---

24-4945/01

**Motorised Sand Equivalent Shaker ASTM. 220-240VK 50Hz 1Ph.**

---

34-3590/01

**Tilting Drum Concrete Mixer 120/90L/ (4/3Cu.Ft) Complete with Stand**

---

34-3540/01

**ELE Concrete Mixer 56/40 Litre Capacity.**

---

34-4520

**100mm Cube Mould 4-Part Clamp Type. Cast Iron Construction. BS EN Compliant.**

---

34-5003

**100 X 100 X 500mm Beam Mould.**

---

34-5210

**100mm Dia Cylinder Mould 200mm Long.**

---

81-0220

**Aluminium Scoop Large**

---

34-2910

**Compacting Bar 25mm Sq X 380mm**

---

81-0340

**Float - Plasterer's type**

---

82-7341

**Mould Oil (25 Litre Drum)**

---

34-0130

**Tamping Rod 16mm Dia X 600mm Long Hemispherical At Both Ends.**

---

81-0705

**Wire Brush**

---

34-6250/01

**Vibrating Table 600 X 400mm Table Top. 220-240V 50Hz 1Ph.. Supplied with clamping assm.**

---

34-6431/01

**Vibrating Poker 22mm Dia Tip 250mm Long. 220-240V 50/60Hz 1Ph.**

---

34-6575/01

**Large Curing Tank C/W with Circulating Pump Heater/Thermostat Unit and Lower Rack**

---

34-8100/09

**Buoyancy Balance**

---

---

39-6160/01

**ADR-Auto V2.0 250/25 Cement Machine C/W Compression and Flexural Jigs and Platen Sets**

---

39-6220

**Set of Distance Pieces**

---

42-4000

**Aggregate Impact Value Apparatus Complete with 16mm Dia X 600mm Long Rod**

---

78-5457/01

**Electronic Balance - 8 000 g x 0.1 g**

---

35-2505

**Crack Detection Microscope Magnification X 40 Measuring Range of 4mm In 0.02mm Divisions**

---

35-2510

**Calibrated Crack Monitor**

---

35-2846

**200mm "Demec" Mechanical Strain Gauge**

---

35-4043

**Gwt Permeability Kit 0-6 Bar Range Supplied In A Carrying Case.**

---

500-175

**Electronic digital theodolite**

---

500-126

**Double prismatic square**

---

500-145

**Levelling staff, 5m**

---

500-146

**Ranging rod**

---

42-5305/01

**Los Angeles Abrasion Machine Meets ASTM and European Standards. 220-240V 50Hz 1Ph.**

---

42-5305/10

## Set of 12 Abrasive Charges EN)

---

42-5300/10

## Set of 12 Abrasive Charges (ASTM).

---

35-2302/09

## Pundit Lab Ultrasonic Concrete Tester 110-240V 50/60Hz 1Ph

---

35-2305

## Ultrasound Couplant Supplied In 250ml bottle

---

35-2167

## Chloride Field Test System

---

560-020

## Protimeter Grainmaster Moisture Meter with 15 Pre-Programmed Crop Calibrations.

---



## 1000/500kN Motorised Compression/Tension Machine (complete with grips) 220-240V 50/60Hz 1Ph.

Code: 36-1410/01

Product Group: Compression Tension Machine

- Compression testing of concrete cubes and cylinders
- Calibration in compression is accurate to 1% of indicated load, satisfying BS EN ISO 7500-1; ASTM E4
- Self-aligning upper platen for compression tests
- Easily fitted grips for tension testing

The load frame is of high quality steel construction with a fixed upper head carrying a ball-seated platen. The ram carrying the lower platen is contained in the base of the frame and is protected by a shroud. Sufficient clearance between the platens allows the compression testing of concrete cylinders up to 160 mm diameter by 320 mm long. To allow for the compression testing of concrete cubes, a range of distance pieces is available.

Tension tests on steel reinforcing bars are conducted by replacing the platens with special grips. As standard the machine is supplied with the following size grips for testing bars, 10 mm, 12 mm, 20 mm, and 25 mm diameter. The machine is motorised, incorporating a change-over lever to select either compression or tension output from the pump.

### Further Information

**\*\*NOT AVAILABLE FOR SALE IN THE USA\*\***

220-240V 50/60 Hz 1Ph.





## ADR Touch 2000 BS EN Compression Machine with Digital Readout and Self Centring Platens.

Code: 36-3280/01

Product Group: BS EN Compression Machines

The ADR Touch range of 2000 kN and 3000 kN capacity compression machines has been designed to meet the need for reliable and consistent testing. The load frame is a welded steel fabrication carrying the ball-seated upper platen. Positively located on the loading ram, which is protected from debris by a flexible cover, the lower platen is marked for the centring of cube and cylinder specimens. Self-centring lower platens for cube location are supplied as standard on EN machines and are available as an optional extra on the standard machine. The two machines for cube testing to EN standards are assembled and aligned using a special compression frame stability tester.

The dimensions of the frame allow the testing of concrete cylinders up to 320 mm long x 160 mm diameter, 150 and 100 mm square cubes, and on EN/BS machines, 200 mm square cubes. Kerbs and flagstones may also be tested on ADR machines as well as 150 mm and 100 mm square section beams to ASTM C78 using the optional 100 kN flexural frames which are connected to the power pack.

## Standards

EN 12350-6, NF P18-411

## Further Information

**\*\*Not available for sale in the USA\*\***

ADR Touch BS EN 2000 and 3000 kN compression machines are supplied complete with self-centring lower platen and safety gates fitted with interlock switches ready for testing 300 x 150 mm diameter cylinders.

Whilst delivering all the features and reputation of the established ADR Series with its extensive design history, the new and improved user interface provides a high quality platform for testing that enhances the performance of ELE's compression machines.

New, sophisticated electronics further the benefits of simplified operation, whilst delivering the highest levels of accuracy in testing concrete and cement/mortar samples, satisfying the needs of Quality Control Managers, Lab Managers and Technicians.

## ACCURACY & SAVINGS

The new ADR Touch Series, with 145mm (5.7") high resolution QVGA touch screen interface and intuitive menu-driven operation, reduces the time taken to set up the machine and perform tests, reducing the time to train staff by up to 25%.



- Up to 6 sample types can be set as favorites, enabling one-touch set up for repeat testing.
- Full, QWERTY touch pad for input of test data.

Most testing errors produce lower strength results. Noncompliant loading rates can generate errors in measured strength. The user interface includes real-time display of load vs. time, further ensuring accurate and consistent test results and providing "goodness of test" data to improve traceability in your QC operations.

## TRACEABILITY & DATA QUALITY

The ADR range now provides improved data quality and traceability in due diligence cases - it is now possible to demonstrate traceability all the way from the machine/user to the accreditation body, increasing your reputation and peace of mind - all test results now come complete with the machine serial number attached.

- Enhanced USB data communications between PC and machine - eliminating the need for download software.
- Two gigabytes of storage memory.
- Full customization of sample sizes - stress calculations are automatically recalculated.

## USER SAFETY

With full safety gates as standard, total systems diagnostics, ram run-out switches and overload warnings ensure the safety of your employees and the reliability of your machine.

---

## Specification

Testing Standards	BS EN 12390-4, BS EN 12390-3, BS EN 12390-4, BS EN 12390-5, EN 12504-1, EN 1354, EN 1521, EN 3161, EN 1338, EN 772-6, EN 13286-41, BS 3892-3, BS 187, BS 6717, BS EN ISO 7500-1, ASTM E4
Capacity	2000 kN
Cubes (Concrete)	Up to 200 mm
Cylinders (Concrete)	Up to 160 x 320 mm
Blocks	Via optional Platen Handling System
Flexural Testing	Via Flexural Frame
TFV and ACV	Yes
Voltage Supply	220-240V 50/60 Hz 1Ph.
Frame Class (Stability)	Tested
Frame Type	Welded
Max vert. Clearance	340 mm
Max hor. Clearance	355 mm
Platen Sizes	Lower 220mm sq, Upper 300mm dia
Max Ram Travel	50 mm

---

## Spares/Consumables



## Pressure transducer, 0-700bar, 0.05 to 10v DC Output

Code: [6014A0062](#)



## 100kN Flexural and Transverse (Flags) Frame. Supplied Without Specimen Bearers and Fitting Kit.

Code: **37-6140**

Product Group: **Flexural and Transverse Testing**

- Open sided for ease of specimen loading
- Meets EN 1339, 1340 for kerbs and flagstones
- Optional ball seating assembly

This rigidly constructed, open sided frame is suitable for testing kerbs and flagstones to EN 1339,1340. With optional accessories it can also be used to test 100 mm and 150 mm section beams for flexural strength to EN 12390-5.

The frame supports a hydraulic ram and upper subplaten assembly incorporating spherical seating. The upper and lower sub-platens will accept specimen loading bearers, which are supplied separately.

## Further Information

**\*\*Not available for sale in the USA\*\***



## 100kN Flexural Fitting Kit (ADR) Used for Connecting Flexural Frames to ADR Compression Machines.

Code: [37-6138](#)

Product Group: [Accessories to connect ELE compression machines to the flexural/transverse frames](#)

These flexural frames can be used with a wide range of ELE compression machines. Simply select one of two fitting kits designed to link the flexural frame to either the ADR-Auto range of compression machines or any other ADR compression machine.

### Further Information

\*\*Not available for sale in the USA\*\*



## Ball Seating Assembly 150mm Dia Platens.

Code: [37-6133](#)

Product Group: [Flexural Testing for Beams](#)

Comprising a ball seating assembly with 150 mm diameter platen and a lower platen 150 mm diameter x 16 mm thick. Suitable for testing low-strength specimens.

### Further Information

**\*\*Not available for sale in the USA\*\***



## Specimen Bearer Assembly

Code: [37-6330](#)

Product Group: [Flexural and Transverse Testing](#)

EN 12390-5, 1521, 13161, 772-6. Comprising 2 self-aligning upper roller bearers, 1 self-aligning and 1 fixed lower roller bearer. Roller bearers are 38 mm dia x 320 mm long and suitable for 3- or 4-point flexural testing of beams.

## Further Information

**\*\*Not available for sale in the USA\*\***





## Specimen Bearers for Testing KerBS. Used on 37-6140 Flags Frame.

Code: [37-6362](#)

Product Group: [Flexural and Transverse Testing](#)

For transverse testing of kerbs to EN 1340.

### Further Information

\*\*Not available for sale in the USA\*\*



## Specimen Bearers for Testing Flags. Used on 37-6140 Flags Frame.

Code: [37-6364](#)

Product Group: [Flexural and Transverse Testing](#)

For transverse testing of flags to EN 1339.

### Further Information

**\*\*Not available for sale in the USA\*\***



## Standard Distance Piece - 20 mm Depth

Code: [37-4980](#)

Product Group: [Distance Pieces](#)

### Further Information

**\*\*Not available for sale in the USA\*\***



## Standard Distance Piece - 50 mm Depth

Code: [37-5000](#)

Product Group: [Distance Pieces](#)

### Further Information

**\*\*Not available for sale in the USA\*\***



## Standard Distance Piece - 60 mm Depth

Code: [37-5020](#)

Product Group: [Distance Pieces](#)

### Further Information

**\*\*Not available for sale in the USA\*\***



## Standard Distance Piece - 80 mm Depth

Code: [37-5050](#)

Product Group: [Distance Pieces](#)

### Further Information

**\*\*Not available for sale in the USA\*\***





## Standard Distance Piece - 100 mm Depth

Code: [37-5100](#)

Product Group: [Distance Pieces](#)

### Further Information

**\*\*Not available for sale in the USA\*\***



## Slump Test Set BS & ASTM. C/W Slump Cone Base Plate Steel Rule Tamping Rod & Funnel.

Code: [34-0192](#)

Product Group: [Slump Test](#)

BS and ASTM comprising of slump cone, base plate, steel rule, tamping rod and funnel.

### Further Information

**\*\*NOT AVAILABLE FOR SALE IN THE USA\*\***



## 300 mm Stainless Steel Rule.

Code: [34-0140](#)

Product Group: [Slump Test](#)

## Standards

EN 12350-2

## Further Information

**\*\*NOT AVAILABLE FOR SALE IN THE USA\*\***



## Graduated Tamping Rod

Code: [34-0132](#)

Product Group: [Slump Cones](#), [Tamping Rods](#),  
[Precision Air Entrainment Meter](#)

## Standards

ASTM C31, ASTM C124, ASTM C138, ASTM C143, ASTM C157, ASTM C192, ASTM C232, ASTM C234, AASHTO T23, AASHTO T119, AASHTO T120, AASHTO T121, ASTM T126, AASHTO T158, AASHTO T159, AASHTO T160

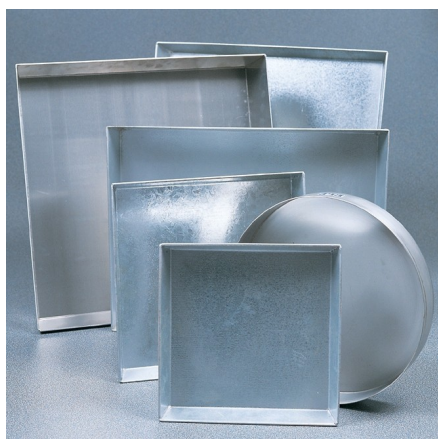
## Specification

Dimensions

5/8" (16 mm) diam. X 24" (610 mm) long; with one hemispherical end.

Weight

Net 2 lb (910 g)



## Sample Tray - 1200 x 1160 x 50 mm

Code: [81-4230](#)

Product Group: [Sample Trays](#)

### Further Information

**\*\*NOT AVAILABLE FOR SALE IN THE USA\*\***



## Shovel - With flat blade

Code: [81-0240](#)

Product Group: [Scoops and Shovels](#)

## Further Information

**\*\*NOT AVAILABLE FOR SALE IN THE USA\*\***





## Digital Stopwatch

Code: [88-4340](#)

Product Group: [Digital Stopwatch](#), [Bitumen Penetration Test](#)

## Specification

Operation

Start-stop and lap split-reset push-buttons.

Time Range

Display up to 9 hours, 59 minutes, 59.99 seconds in 0.01 second increments.

Weight

4 oz. (227 g).



## Vibro Consistometer

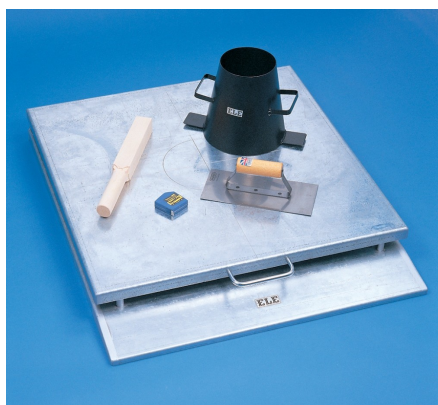
Code: [34-0300/01](#)

Product Group: [Vebe Time](#)

Comprising of vibrating table, container, slump cone, graduated rod and plate. For 220 - 240 V AC, 50 Hz, 1 ph.

## Further Information

**\*\*NOT AVAILABLE FOR SALE IN THE USA\*\***



## Apparatus for Determining Flow In Concrete (Flow Table).

Code: [34-0450](#)

Product Group: [Flow Table](#)

Comprising of mould, flow, tamper, metre rule, float and stopwatch

## Further Information

**\*\*NOT AVAILABLE FOR SALE IN THE USA\*\***



## K-slump Tester

Code: [34-0580](#)

Product Group: [K-Slump Tester](#), [K-Slump Tester](#)

Developed to determine the workability of fresh concrete and the degree of concrete compaction placed in formwork. The apparatus can be used for in-place measurements of concrete in test moulds and forms and may be correlated to the standard slump test. It is simple, economical to use and reduces testing time. No special calibration is required.

## Specification

Construction

Nickel Plated Steel. Calibrated 3/4" (19 mm) diam. Hollow tube; pointed insertion end; round disc controls depth of penetration.

Openings

Two groups through which concrete enters.

Test time

60 seconds

Weight

450 g



## Automatic Soil Compactor BS 220-240V 50Hz 1Ph.

Code: [24-9090/01](#)

Product Group: [Automatic Compactors](#)

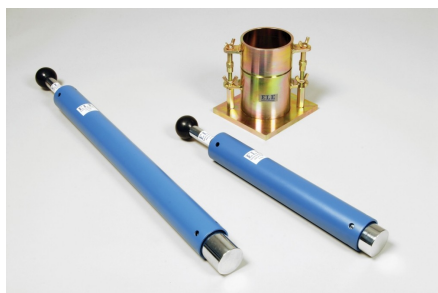
Preset blow pattern ensures an even compaction, includes solid state controls for reliability and maintenance. An automatic digital counter resets to zero on the completion of a test. An selectable rammer with a drop height of 300-450mm, a selectable rammer weight of 2.5 or 4-5kg. A preset number of blows per layer can be set by thumb wheel control. A compaction rate of approximately 26 blows per minute. Accepts BS Standard Compaction and CBR moulds; also meets the requirements of BS1377. Voltage 220-240V 50hz 1ph.

## Standards

BS 1377, EN 13286-2, EN 13286-47

## Specification

Dimensions (l x w x h)	430 x 240 x 1400 mm
Rammer BS/EN	Circular faced, 50 mm dia, selectable to 2.5 kg or 4.5 kg weight.
Rammer ASTM	Circular faced, 2 in (50.8 mm) dia, selectable to 5.5 lb (2.5 kg) or 10 lb (4.5 kg) weight.
Drop BS/EN	Adjustable to 300 mm or 450 mm
Drop ASTM	Adjustable to 12 in (305 mm) or 18 in (457 mm)
Weight kg	150



## BS Standard Compaction Mould 1000Cm Capacity.

Code: 24-9000

Product Group: [Accessories for BS compaction and CBR, BS/EN compaction test 2.5kg](#)

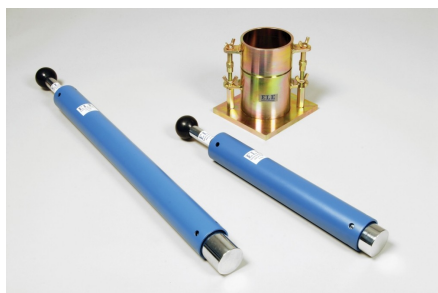
Plated steel standard compaction mould to BS 1377, comprising of a collar mould body and base plate with quick release wing nuts for easy dismantling.

## Standards

BS 1377-4, BS 1924-2

## Specification

Mould volume	1 litre
Dimensions	105 mm dia x 115.4 mm high
Construction	All steel, threaded studs with wing nuts, plated.
Weight	5.5 kg



## Standard Compaction Rammer 2.5Kg BS1377-1975

Code: [24-9002](#)

Product Group: [BS/EN compaction test 2.5kg](#)

50mm diameter with 300mm drop, manufactured from corrosion protected steel.

## Standards

BS 1377-4, BS 1924-2

## Specification

Rammer	50 mm dia, 2.5 kg
Drop	300 mm
Guide Sleeve	Machined steel tubing with air pressure release holes
Finish	Corrosion resistant
Weight kg	4.2



## Motorised Sand Equivalent Shaker ASTM. 220-240VK 50Hz 1Ph.

Code: [24-4945/01](#)

Product Group: [Sand Equivalent Value](#), [Sand Equivalent Value](#)

Bench mounting mechanical sand equivalent shaker with a stroke of 203mm (8 inches) and a running frequency of 175 cycles per minute. The integral timer stops shaker upon test completion. For use on 220-240v 50Hz 1ph.

### Further Information

**\*\*NOT AVAILABLE FOR SALE IN THE USA\*\***

Recommended for use in laboratories performing a large number of tests, motorised shakers provide a consistent and repeatable oscillation, minimising variation in test results.





## Tilting Drum Concrete Mixer 120/90L/ (4/3Cu.Ft) Complete with Stand

Code: [34-3590/01](#)

Product Group: [Tilting Drum Mixer](#)

120/90 litre mixing capacity. For 220 - 240 V AC, 50 Hz, 1 ph.

## Standards

EN 2390-2

## Further Information

**\*\*NOT AVAILABLE FOR SALE IN THE USA\*\***



## ELE Concrete Mixer 56/40 Litre Capacity.

Code: [34-3540/01](#)

Product Group: [ELE Concrete Mixer](#)

- Portable and compact
- Tipping mechanism
- Adjustable blades
- Simple to clean and maintain

It is essential that the mixing of fresh concrete for laboratory test samples is thorough and consistent. The ELE Concrete Mixer is ideally suited for this purpose.

The mixer has been developed to give efficient mixing of both wet and dry materials. The mixing pan is removable and tilts for easy access to the pan and emptying on completion of the mixing operation. It is rotated by a turntable driven by a 1500 W, IP55 protected electric motor.

The mixer head lifts clear to provide maximum access to the pan and holds the mixing blades at a constant depth during the mixing operation. The blades are readily adjusted to suit the different types and volume of materials to be mixed.

## Further Information

**\*\*NOT AVAILABLE FOR SALE IN THE USA\*\***

220 - 240 V AC, 50 Hz, 1 ph.



## 100mm Cube Mould 4-Part Clamp Type. Cast Iron Construction. BS EN Compliant.

Code: [34-4520](#)

Product Group: [Cube Moulds](#), [Cube Moulds](#)

4-part with clamp attached base plate.

### Specification

Construction

Bolted sides and clamped base  
plate

Finish

Painted

Weight

20 lb (9.1 kg)



## 100 X 100 X 500mm Beam Mould.

Code: [34-5003](#)

Product Group: [Beam Moulds](#)

Complete with base plate

Weight 17 kg

### Further Information

**\*\*NOT AVAILABLE FOR SALE IN THE USA\*\***



## 100mm Dia Cylinder Mould 200mm Long.

Code: [34-5210](#)

Product Group: [Cylinder Moulds](#)

100 mm diameter x 200 mm long, complete with base plate.

## Standards

EN 12390-1, EN 12390-2

## Further Information

**\*\*NOT AVAILABLE FOR SALE IN THE USA\*\***



## Aluminium Scoop Large

Code: [81-0220](#)

Product Group: [Slump Test, Scoops and Shovels](#)

### Further Information

**\*\*Not available for sale in the USA\*\***



## Compacting Bar 25mm Sq X 380mm

Code: [34-2910](#)

Product Group: [Accessories for Concrete Moulds,](#)  
[Precision Air Entrainment Meter](#)

Steel, 380 x 25 mm (length x square) tamping area,  
EN/BS.



## Float - Plasterer's type

Code: [81-0340](#)

Product Group: [Trowels and Floats](#)

## Further Information

**\*\*NOT AVAILABLE FOR SALE IN THE USA\*\***





## Mould Oil (25 Litre Drum)

Code: [82-7341](#)

Product Group: [Chemicals, Test and Reference Materials, Accessories for Concrete Moulds](#)

### Further Information

**\*\*Not available for sale in the USA\*\***



## Tamping Rod 16mm Dia X 600mm Long Hemispherical At Both Ends.

Code: 34-0130

Product Group: Precision Air Entrainment Meter, Slump Test, Accessories for Concrete Moulds

Steel, 600 mm long x 16 mm dia, hemispherical at both ends

### Further Information

**\*\*NOT AVAILABLE FOR SALE IN THE USA\*\***



## Wire Brush

Code: [81-0705](#)

Product Group: [Accessories for Concrete Moulds,](#)  
[Miscellaneous Laboratory Hardware](#)

## Further Information

**\*\*Not available for sale in the USA\*\***



## Vibrating Table 600 X 400mm Table Top. 220-240V 50Hz 1Ph.. Supplied with clamping assm.

Code: [34-6250/01](#)

Product Group: [Vibrating Table](#)

Vibrating table mounted on a steel stand, supplied  
with clamp assembly.

## Further Information

**\*\*NOT AVAILABLE FOR SALE IN THE USA\*\***

3000 cycles per minute. For 220 - 240 V AC, 50 Hz, 1 ph.

## Specification

Dimensions (table top)	600 x 400 mm
Maximum no. Cube moulds	2 x 150 mm <sup>2</sup>
Clamp Assembly	Single
Weight	60 kg



## Vibrating Poker 22mm Dia Tip 250mm Long. 220-240V 50/60Hz 1Ph.

Code: [34-6431/01](#)

Product Group: [Vibrating Poker](#)

- High amplitude and speed
- Flexible shaft for long life

Used as an internal means of vibratory compaction. The poker is inserted into the concrete which is then compacted by the high frequency vibration action. For use in either laboratory or site environments, the diameter of the vibrating tip must not exceed 25% of the smallest dimension of the specimen.

### Standards

EN 12390-2

### Further Information

**\*\*NOT AVAILABLE FOR SALE IN THE USA\*\***

For 220 - 240 V AC, 50 - 60 Hz, 1 ph

### Specification

Tip Dimensions	22 mm diameter x 250 mm long
Shaft dimensions	2.0 m long
Speed	12,000 vibrations/min.
Overall Dimensions	200 x 300 x 350 mm
Weight	7 kg



## Large Curing Tank C/W with Circulating Pump Heater/Thermostat Unit and Lower Rack

Code: [34-6575/01](#)

Product Group: [Expansion \(swell\) Test Equipment, Large Curing Tank](#)

This curing tank is supplied complete with a submersible pump, immersion heater/thermostat unit and separate control panel. The tank includes a lower rack as standard and is designed to maintain the temperature at  $20 \pm 2^{\circ}\text{C}$ , providing that the ambient temperature does not fall below  $15^{\circ}\text{C}$  or rise above  $20^{\circ}\text{C}$ .

## Further Information

**\*\*NOT AVAILABLE FOR SALE IN THE USA\*\***

Supplied as specified. For 220 - 240 V AC, 50 - 60 Hz, 1 ph.

## Specification

Internal Dimensions	1040 x 1040 x 605 mm (l x w x h)
Capacity	650 litres
Rated Power	2000 watt
Weight	60 kg



## Buoyancy Balance

Code: [34-8100/09](#)

Product Group: [Hardened Concrete - Buoyancy Balance, Percentage Refusal Density \(PRD\)](#)

## Standards

EN 12697-32, EN 13280-4, BS 598-104

## Further Information

**\*\*NOT AVAILABLE FOR SALE IN THE USA\*\***



## ADR-Auto V2.0 250/25 Cement Machine C/W Compression and Flexural Jigs and Platen Sets

Code: 39-6160/01

Product Group: [ADR-Auto V2.0 250/25 Compression Machine, Activity Index](#)

- 250 kN maximum capacity
- Calibration accuracy to BS EN ISO 7500-1; ASTM E4
- Automatic loading cycle
- 25 kN low capacity frame supplied as standard
- Tests a wide variety of specimen sizes
- Tests mortar, lime, cement and Fly Ash
- Complete with compression/flexural jigs and platen sets
- Supplied with Windows(R) download software as standard

The ADR-Auto 250/25 Machine provides consistent automatic testing of a wide range of specimens. The machine comprises a standard ELE 250/25 kN load frame and ADR-Auto console and incorporates all the features included in the ADR-Auto series concrete testing machines.

As standard the machine is supplied with platens fitted to the load frame, compression jig with 40 mm and 50mm/2 inch square platen sets and flexural jig for testing 40.1 x 40 x 160 mm prisms.

The availability of the 25 kN low capacity load frame as standard extends the test capability of the machine for low strength compression or flexural testing. The automatic loading cycle is controlled by a closed loop microprocessor hydraulic system incorporated with the display in the ADR-Auto console attached to the load frame. A serial output port is built into the system, enabling test data to be stored in memory (up to 500 test results) for subsequent downloading to PC or suitable printer.

## Standards

EN 196-1, EN 459-2, EN 1744, EN 1015-11, EN 13454-2, BS 3892-1, BS 4551-1, ASTM C109

## Further Information

**\*\*NOT AVAILABLE FOR SALE IN THE USA\*\***

For 220 - 240 V AC, 50 Hz, 1 ph.





## Set of Distance Pieces

Code: [39-6220](#)

Product Group: [ADR-Auto V2.0 250/25 Compression Machine](#)

Accessory: for testing samples 40mm, 50mm, 70.7mm and 100mm. Note: These items are required when testing above sample sizes NOT using the compression jig.

## Further Information

**\*\*NOT AVAILABLE FOR SALE IN THE USA\*\***



## Aggregate Impact Value Apparatus Complete with 16mm Dia X 600mm Long Rod

Code: 42-4000

Product Group: Aggregate Impact Value (AIV)

Heavy duty construction, heavily plated assembly ensures corrosion resistance.

### Standards

BS 812-112

### Further Information

**\*\*NOT AVAILABLE FOR SALE IN THE USA\*\***



## Electronic Balance - 8 000 g x 0.1 g

Code: [78-5457/01](#)

Product Group: [Electronic Balances](#)

## Further Information

**\*\*Not available for sale in the USA\*\***

## Specification

Capacity resolution	8000 g x 0.1 g
Pan size	225 x 300 mm
Mains and battery	Yes
Dimensions (l x w x h)	340 x 320 125 mm
Weight	4 kg



## Crack Detection Microscope Magnification X 40 Measuring Range of 4mm In 0.02mm Divisions

Code: [35-2505](#)

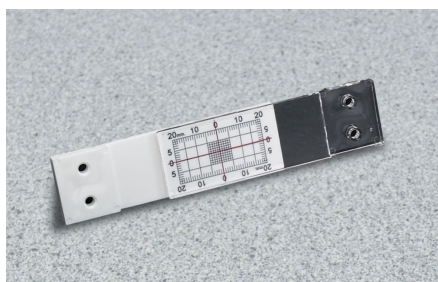
Product Group: [Crack Detection](#), [Crack Detection Microscope](#)

Specifically designed for measuring crack width in concrete, this high definition microscope operates via an adjustable light source provided by high power batteries.

Supplied in a pocket sized carrying case.

### Specification

Dimensions (l x w x h)	40 x 90 x 150 mm (in case)
Magnification	x 40
Measuring range	4 mm, 0.02 mm divs
Weight	550 g
Dimensions (l x w x h)	40 x 90 x 150 mm (in case)
Magnification	x 40
Measuring range	4 mm, 0.02 mm divs
Weight	550 g
Magnification	X 35 .
Measuring Range	4 mm.
Divisions	0.02 mm.
Dimensions	1.5â€³ x 3.5â€³ x 6â€³ (40 x 90 x 150 mm) in case.
Weight	Net 19.4 oz. (550 g).



## Calibrated Crack Monitor

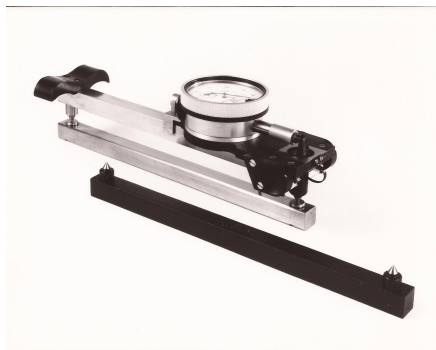
Code: [35-2510](#)

Product Group: [Calibrated Crack Monitor](#)

Includes crack progress chart.

## Specification

Construction	10 Hz to 100 kHz in 4 switched ranges.
Discrimination	0.5 mm.
Max. Crack Width Movement	3/4" (20 mm); longitudinal.
Max. Upward Movement	3/8" (10 mm); transverse.
Coeff. Of Thermal Expansion	3.80 x 10 <sup>-5</sup> in/in/°F. (6.84 x 10 <sup>-5</sup> mm/mm/°C).
Dimensions	Grid: 1-1/2" x 3/4" (40 x 20 mm). Plates: 1-1/4" x 4" x 1/4" (32 x 102 x 6.3 mm) ea. Overall: 1-1/4" x 5-3/4" x 1/4" (32 x 146 x 6.3 mm).
Weight	Net 2 oz. (57 g).



## 200mm "Demec" Mechanical Strain Gauge

Code: [35-2846](#)

Product Group: [Strain Gauge](#)

This gauge is ideal for monitoring cracks and strains in a number of structure types.

## Standards

BS 1881-206



## Gwt Permeability Kit 0-6 Bar Range Supplied In A Carrying Case.

Code: [35-4043](#)

Product Group: [Permeability of Concrete](#)

The Water Permeability Test Kit is a portable unit capable of measuring in-situ permeability. It has a dual measuring range of 0 - 1.5 bar or 0 - 6 bar. Consisting of a sealed water reservoir and all necessary attachments, the unit is supplied complete in a carrying case. Dimensions 460 x 310 x 100 mm (l x w x h).

### Further Information

**\*\*NOT AVAILABLE FOR SALE IN THE USA\*\***



## Electronic digital theodolite

Code: [500-175](#)

Product Group: [Surveying Equipment](#)

Supplied complete with instruction manual, protective cover, carrying case and tripod.





## Double prismatic square

Code: [500-126](#)

Product Group: [Surveying Equipment](#)

In leather case with plumb bob. As described.



## Levelling staff, 5m

Code: [500-145](#)

Product Group: [Surveying Equipment](#)

Aluminium 5 section telescopic.



## Ranging rod

Code: [500-146](#)

Product Group: [Surveying Equipment](#)

jointed, 2 metre length.



## Los Angeles Abrasion Machine Meets ASTM and European Standards. 220-240V 50Hz 1Ph.

Code: [42-5305/01](#)

Product Group: [Los Angeles Abrasion Machine](#), [Los Angeles Abrasion Machine](#)

The machine consists of a closed hollow cylindrical steel drum rotating around its horizontal axis on ball bearing units mounted on a sturdy base framework.

The drum is driven at a speed of between 30 - 33 rpm via an enclosed belt drive arrangement from an electric motor/gearbox unit situated on the base frame. Inside the drum a full length steel shelf is attached, accessed by a dust-proof opening.

The cylinder incorporates a removable internal shelf, one shelf position is provided to meet the requirements of both the ASTM and EN test standards.

Controls are located easily on the right-hand side of the machine at convenient operator height.

Start and stop push buttons and a subtracting revolution counter allows the user to preset the number of revolutions before an automatic stop.

## Standards

EN 1097-2, ASTM C131, ASTM C535, AASHTO T96, NF P18-573

## Further Information

Less charges. For 220 - 240 V AC, 50 Hz, 1ph.

## Specification

Capacity	5,000 g each of aggregate and charge.
Drum Speed	30-33 rpm.
Frame	Welded structural steel.
Counter	Adjustable; automatic shut-off; push-button reset and adjustment.
Controls	Magnetic motor starter with overload protection and integral On-Off switches.
Dimensions	38.6" w. x 36.2" d. x 38.6" h. (980 x 920 x 980 mm).
Weight	Net 882 lbs. (400 kg).

# Product Sheet

[www.ele.com](http://www.ele.com)  
+44 (0) 01525 249 200



Motor

1 HP

## Set of 12 Abrasive Charges EN)

Code: [42-5305/10](#)

Product Group: [Los Angeles Abrasion Machine](#)

EN Set of 12.



## Standards

EN 1097-2, ASTM C131, ASTM C535

## Further Information

**\*\*NOT AVAILABLE FOR SALE IN THE USA\*\***

## Set of 12 Abrasive Charges (ASTM).

Code: [42-5300/10](#)

Product Group: [Los Angeles Abrasion Machine](#), [Los Angeles Abrasion Machine](#)

ASTM Set of 12.



## Standards

EN 1097-2, ASTM C131, ASTM C535, AASHTO T96



## Pundit Lab Ultrasonic Concrete Tester 110-240V 50/60Hz 1Ph

Code: [35-2302/09](#)

Product Group: [Pundit Lab](#), [Pundit Lab Ultrasonic Concrete Test](#)

Pundit Lab is the most versatile Pundit to date. It has all the functions of the classic Pundit 7, but offers additional benefits.

Designed with laboratory use in mind, its compact size, rugged construction and optimized power consumption make it equally suitable for on-site use.

Along with the traditional transit time and pulse velocity measurement, Pundit Lab offers path length measurement, perpendicular crack depth measurement and surface velocity measurement.

Optimized pulse shaping gives greater transmission range at lower voltage levels. This coupled with automated combination of the transmitter voltage and the receiver gain ensures an optimum received signal level, ensuring accurate and stable measurements.

The waveform can be viewed either via an external oscilloscope connection or directly on a connected PC screen.

Full remote control capability completes the package.

Complete with two 54 kHz transducers each with 3.6 metres of cable, coupling agent, carrying case and instruction manual.

### Further Information

For 110 - 240 V AC, 50 - 60 Hz, 1 ph.

### Spares/Consumables



### Ultrasound Couplant Supplied In 250ml bottle

Code: [35-2305](#)





## Ultrasound Couplant Supplied In 250ml bottle

Code: [35-2305](#)

Product Group: [Pundit Lab](#)

Thick Grade

## Further Information

**\*\*NOT AVAILABLE FOR SALE IN THE USA\*\***



## Chloride Field Test System

Code: 35-2167

Product Group: Chloride Field Test System

### Specification

Meter

Battery powered, high impedance electronic meter with temperature compensation circuits and microprocessor for direct conversion to percent of chloride.

Electrode

Chloride combination type with externally mounted temperature sensor, cable and connectors.

Components

12 jars (20 ml each) of extraction liquid, 5 jars of colored calibration liquid, 1 jar of wetting agent, spray bottle, collection pan and blower, clamping pliers, drill bit and anchors, scales and carrying case.

Weight

Net 10 lbs. (5 kg).



## Protimeter Grainmaster Moisture Meter with 15 Pre-Programmed Crop Calibrations.

Code: **560-020**

Product Group: **Moisture meters**

- Microprocessor controlled.
- Automatic temperature compensation.
- Instant LCD readings for many crops.
- Temperature measurement facilities.

A completely portable unit suited to in-store or field use. Incorporates instant digital-readout of moisture content and automatic temperature compensation for rapid and accurate moisture determinations.

The simple 4 stage operation takes less than a minute per sample:

- Insert the program key for the crop to be tested.
- Place grinder over sample cell and grind sample.
- Compress the sample.
- Press "ON" switch and read moisture content.

The unit is battery powered and can be used with a wide variety of crops using interchangeable program keys for direct readings. In addition, by using the probe accessory the meter may also be used to measure the temperature of stored grain, thus enabling the principle grain quality and storage checks to be carried out with one instrument.

### Further Information

Supplied with sip-top pouch, compressor, hand grider, quick check standard, high check standard, storage case for program keys, calibration chart and prgram keys for ground samples of wheat and barley to ISO standard.

Requires one PP3 battery - not included. Supplied with sip-top pouch, compressor, hand grider, quick check standard, high check standard, storage case for program keys, calibration chart and prgram keys for ground samples of wheat and barley to ISO standard.

Requires one PP3 battery - not included. Supplied with sip-top pouch, compressor, hand grider, quick check standard, high check standard, storage case for program keys, calibration chart and prgram keys for ground samples of wheat and barley to ISO standard.

Requires one PP3 battery - not included. Supplied with sip-top pouch, compressor, hand grider, quick check standard, high check standard, storage case for program keys, calibration chart and prgram keys for ground samples of wheat and barley to ISO standard.

Requires one PP3 battery - not included. Supplied with sip-top pouch, compressor, hand grider, quick check standard, high check standard, storage case for program keys, calibration chart and prgram keys for ground samples of wheat and barley to ISO standard.

Requires one PP3 battery - not included.

