



IF IT'S WORTH BUILDING, IT'S WORTH TESTING

This wishlist was generated on 04/11/2016, and contains the following Products:

---

25-3518/01

**Digital Tritest 50 Load Frame**

---

27-1293

**Distance Piece Stainless Steel for Use with Submersible Load Cells and Axial Strain Transducers.**

---

27-1573

**Submersible Load Transducer Assembly 5kN Capacity In Compression.**

---

27-1617

**Axial Strain Transducer Assembly 50mm Travel Fitted with 5 Pin Din Plug.**

---

27-1633

**Pressure Transducer Assembly 1700Kpa Fitted with 5 Pin DIN Plug.**

---

27-1641

**Volume Change Transducer Assembly 80ml Capacity Maximum Working Pressure 1700KPa**

---

26-1880

**Universal Pump and Pressure Indicating Panel 1700Kpa.**

---

26-1760

**Pneumatic Pressure Reducing Panel. Provides Two Independent Pressure Outlets 1000 kPa Max.**

---

26-1746

**Bladder-Type Air/Water Pressure Assembly. 1000 Kpa Maximum Working Pressure.**

---

83-1730/01

**Air Compressor**

---

25-1833/01

**De-Aired Water Apparatus 15 Litre Capacity**

---

26-1926

**Nylon Tubing 6mm Od 3500Kpa.**

---

26-1769

**Nylon Tubing 30 Metre Length.**

---

---

25-4047

**50mm Triaxial Cell 1700Kpa with 5 Pressure/ Drainage Ports. Supplied with Two Valves.**

---

25-4166

**38mm/1.5 Inch Base Adaptor for 50mm Cells.**

---

25-4290

**Membrane Placing Tool 35mm/38mm.**

---

25-5100

**Suction Membrane Device 38mm/1.5 Inch Diameter.**

---

25-5120

**Two-Way Split Former 38mm/1.5 Inch Diameter.**

---

25-5050

**Pressure Pad 38mm/1.5 Inch Diameter.**

---

25-5061

**Rubber Membrane 38mm/1.5 Inch Diameter. Pack of 10.**

---

25-5081

**Membrane Sealing Ring 38mm/1.5 Inch Diameter. Pack of 10.**

---

25-5181

**Porous Disc 38mm/1.5 inch Diameter. Pack of 2.**

---

25-5200

**Filter Paper Drain 38mm/1.5 inch Diameter. Pack of 50.**

---

25-4200

**Piston Restraint Clamp for Ele Triaxial Cells**

---

25-4520

**Valve No Volume Change 1/4 Inch BSp Fitted with 6 mm Connector and Integral Sealing Ring.**

---

25-0402

**Consolidation Frame One Dimensional Consolidation Incremental Loading Device.**

---

25-0408

**Set of Weights 100Kg Total Weight.**

---

---

25-0503

**Consolidation Cell/ Oedometer Complete 75mm Diameter Sample**

---

25-0509

**Calibration Disc 75mm Cell**

---

27-1649

**Consolidation Transducer Assembly 10mm Travel Fitted with 5 Pin Din Plug.**

---

26-2114/01

**Digital Direct/Residual Shear Apparatus Complete with Lever Loading Assembly. 220-240V 50/60Hz 1Ph.**

---

27-1561

**S-Type Load Cell 5 kN.for Use with Direct/ Residual Shear Machine. Fitted with 5 Pin Din Plug.**

---

26-2132

**Set of Weights 50 kg Slotted.**

---

26-2185

**Specimen Cutter 60mm Sq.**

---

27-1697

**Horizontal Displacement Transducer Assembly 15mm Travel 5 Pin Din Plug Mounting Pillar**

---

27-1689

**Vertical Displacement Transducer Assembly 15mm Travel with 5 Pin Din Plug Bracket for Shear Box**

---

26-2181

**Shear Box Assembly 60mm Sq.**

---

27-1500/01

**GDU 8 Channel Data Acquisition Unit 220-240 V 50/60 Hz, 1 Ph.**

---

27-1505

**8-Channel Expansion Analog Input Module**

---

S1160

**DS7.2 Software-UU/CU/CD Triaxial, Permeability, Consolidation, Direct/Residual Shear, CBR**

---



## Digital Tritest 50 Load Frame

Code: [25-3518/01](#)

Product Group: [Digital Tritest 50 Load Frame](#), [CBR Load Frames](#), [Triaxial Load Frames](#)

- Microprocessor control
- Large on-board LED screen display
- Direct entry via a touch sensitive keyboard
- Rapid approach and return to datum of platen
- Fully variable speed, 0.00001 to 9.99999 mm/min
- Samples up to 100 mm diameter

This 50 kN capacity machine, designed primarily for triaxial testing of soil specimens up to 100 mm diameter x 200 mm long, comprises a rigid twin column construction with an integral fully variable microprocessor controlled drive unit and LCD display with a touch sensitive keyboard. The machine is normally bench mounted for ease of installation and operation.

The use of a microprocessor controlled drive system and keyboard entry provides the Digital Tritest 50 with a wide variety of features which include pause and speed reset during test, RS 232C, operator programming of speed and control functions, self test diagnostics and many other features.

A robustly constructed steel case houses the motor drive system with careful attention being given to the prevention of ingress of water or grit. All operating controls are mounted on the front panel of the machine, which is angled and recessed to prevent physical and environmental damage.

## Standards

BS 1377-7, BS 1377-8, BS 1924-2, ASTM D1883, ASTM D2166, ASTM D2850, ASTM D4767, ASTM D7181, AASHTO T99, AASHTO T134, AASHTO T135, AASHTO T136, AASHTO T180, AASHTO T193, AASHTO T208, AASHTO T296, AASHTO T297

## Further Information

Complete with RS 232C interface.

## Specification

Capacity	50kN (11,200 lbf).
Speed Range	English mode: 0.000001 to 0.399999 in/min. Metric mode: 0.00001 to 9.99999 mm/min.
Rapid Approach Speed	1.0 in/min. (25 mm/min.).

# Product Sheet

[www.ele.com](http://www.ele.com)  
+44 (0) 01525 249 200



Platen Travel	100mm (3.9"); limit switch protection.
Platen Diameter	133 mm (5.2")
Vertical Clearance	910 mm, (36 .8") maximum; 305mm, (12") minimum.
Horizontal Clearance	364mm, (15 .3").
Serial Interface	RS232C; programmable baud rate and protocol.
Overall Dimensions	500 x 500 x 1,470 mm, (19.7" w. x 19.7" d. x 57.8" h).
Weight	Net 100kg (220 lbs); Shpg. 136kg (300 lbs).



## Distance Piece Stainless Steel for Use with Submersible Load Cells and Axial Strain Transducers.

Code: [27-1293](#)

Product Group: [Submersible Load Transducers](#), [Load Measurement](#), [Load Measurement](#)

Required when using submersible load cells.





## Submersible Load Transducer Assembly 5kN Capacity In Compression.

Code: [27-1573](#)

Product Group: [Load Measurement, Load Measurement, Submersible Load Transducers](#)

- Eliminates effects of piston friction on readings
- Unaffected by cell confining pressures
- Easily installed in triaxial cell
- Supplied complete with calibration certificate and 5-pin DIN type connector for use with GDU

Submersible Load Transducers are used to measure accurately the axial loads applied to triaxial test specimens. Consisting of a load cell and piston assembly these units replace the standard triaxial cell loading piston. A major advantage is that these transducers measure loads directly on top of the specimen. All transducers are supplied complete with a 5-pin DIN type connector and calibration certificate.

## Specification

Dimensions	75 x 50 mm (dia x h) excluding piston and adaptor
Overload capacity	150%
Output	26 mv full range
Excitation	10 V DC (15 V DC max)
Non-linearity	0.1% maximum
Hysteresis Deflection	0.1% maximum 0.05 mm at full load
Side force	50% full scale maximum without effect
Connector	5-pin DIN plug
Compensated temperature range	0 to 50°C
Weight g	850





## Axial Strain Transducer Assembly 50mm Travel Fitted with 5 Pin Din Plug.

Code: [27-1617](#)

Product Group: [Axial Displacement](#), [Axial Displacement](#), [Displacement Transducers](#)

0 to 50 mm range. For use with Triaxial Cells.

- Ideally suited for use with GDU for accurate displacement measurements
- Models available for use in consolidation, shear, CBR and triaxial test applications
- Supplied complete with mounting hardware for specified products

Displacement Transducers are used in consolidation, shear, CBR and triaxial test applications for accurate displacement measurements. They are supplied complete with a 5-pin DIN type connector for direct connection to the GDU.

## Specification

Construction	Fully encapsulated electronics, sealed in a stainless steel case
Excitation	10V DC
Connector	5-pin DIN type
Mounting bracket	Included as standard
Weight kg	0.45

## Spares/Consumables



## CBR Displacement Transducer

Code: [27-1706](#)



## Pressure Transducer Assembly 1700Kpa Fitted with 5 Pin DIN Plug.

Code: 27-1633

Product Group: [Pressure Measurement](#), [Tri-Flex 2](#)  
[One-Cell Permeability Test System](#), [Pressure](#)  
[Transducer](#)

Pressure Transducers are used to measure the cell, pore and back pressures during triaxial testing. Assemblies are supplied complete with a de-airing block, valve, 5-pin DIN plug connector and calibration certificate

### Specification

Construction	Stainless Steel
Excitation	10 V DC
Output	143 mV full range
Thread	1/4" BSP



## Volume Change Transducer Assembly 80ml Capacity Maximum Working Pressure 1700KPa

Code: 27-1641

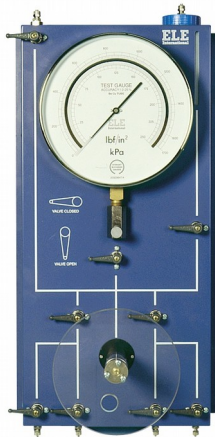
Product Group: [Volume Change Measurement](#),  
[Tri-Flex 2 One-Cell Permeability Test System](#), [Volume Change Measurement](#), [Volume Change Transducer](#)

- Reversing valves to increase capacity
- Steel case for wall mounting and access to piping
- Supplied complete with calibration certificate

The Volume Change Transducer provides continuous measurements of volume change during the triaxial test. The assembly includes a valve to reverse the flow through the unit, providing increased capacity.

### Specification

Maximum Pressure	250 psi (1,700 kPa).
Excitation	10V DC.
Output	1.25 Volts full range.
Capacity	80 cc x 0.1 cc sensitivity.
Case	Steel; hinged for access to piping.
Connector	5-Pin DIN type.
Overall Dimensions	9" w. x 7" d. x 14 -1/2" h. (229 x 178 x 368 mm).
Weight	Net 11 lbs. (5 kg).



## Universal Pump and Pressure Indicating Panel 1700Kpa.

Code: [26-1880](#)

Product Group: [Modular Pressure Panel System](#)

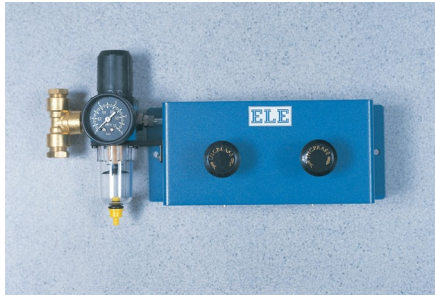
This is the main pressure display in the system for monitoring various pressures and also provides fine control of the pressure within the system using the rotary hand pump. The unit is fitted with a dual calibrated 250 mm diameter pressure gauge, four inlet/outlet no-volume change valves, screw controlled rotary hand pump, water reservoir and isolating valves. The unit is housed in a hinged case for wall or bench mounting. By using an isolating valve the panel may be used to monitor cell or back pressure. 1700 kPa and 250 lbf/in<sup>2</sup>.

## Spares/Consumables



### Pressure Gauge 1700Kpa (250Psi) 250mm Diameter.

Code: [26-1865/10](#)



## **Pneumatic Pressure Reducing Panel. Provides Two Independent Pressure Outlets 1000 kPa Max.**

Code: [26-1760](#)

Product Group: [Air/Water Pressure Systems - up to 1000 kPa](#)

Comprising two constant pressure reducing valves with inlet water trap and pressure indicator. The unit allows a maximum output pressure of 1000 kPa. Maximum input pressure should not exceed 1400 kPa. The panel has an inlet connector to accept Nylon tubing from the air compressor and two 6 mm outlets for connecting Bladdertype Air/Water Pressure Assemblies. An outlet connector is fitted for the connection of an additional panel using Nylon tubing to increase the total capacity of the system. This outlet is blanked off when not required.



## Bladder-Type Air/Water Pressure Assembly. 1000 Kpa Maximum Working Pressure.

Code: 26-1746

Product Group: [Air/Water Pressure Systems - up to 1000 kPa](#)

With transparent plastic chamber for operating continuously at pressures up to 1000 kPa. A length of tubing is provided for connecting the air/water cylinder outlet to a pressure measuring system.

- Used to supply hydraulic pressure from a pneumatic pressure source.
- Prevents air entering the hydraulic pressure system.
- Maximum working pressure 1000kpa.
- Supplied with connectors and tubing for fitting to pressure measuring systems.

## Spares/Consumables



## Pneumatic Pressure Reducing Panel. Provides Two Independent Pressure Outlets 1000 kPa Max.

Code: 26-1760



## Replacement Bladder Wide Neck (38mm Id)

Code: 26-1746/10



## Air Compressor

Code: 83-1730/01

Product Group: Air Compressors, Air/Water Pressure Systems - up to 1000 kPa

## Further Information

**\*\*NOT AVAILABLE FOR SALE IN THE USA\*\***

## Specification

Dimensions (l x w x h)	483 x 457 x 864 mm
Free air delivery	2.0 cfm
Receiver capacity	50 litres
Maximum pressure	1000 kPa
Continuous working pressure	700 kPa
Electrical supply	220 – 240 V AC 1 ph 50 Hz
Water Trap	No
Weight	57 kg



## De-Aired Water Apparatus 15 Litre Capacity

Code: [25-1833/01](#)

Product Group: [De-Aired Water](#)



This compact self-contained unit will de-air water quickly and efficiently down to levels of dissolved oxygen acceptable for geotechnical test methods. Air is removed from the water by a vacuum system, which continuously circulates the water in the tank. The unit is supplied with a clear water container, which will hold a maximum of 15 litres of water. Input and output lines are formed using standard 6 mm tube connectors.

## Standards

BS 1377-1

## Specification

Dimension

380 x 356 x 470 mm (l x w x h).



## Nylon Tubing 6mm Od 3500Kpa.

Code: [26-1926](#)

Product Group: [Permeability of Rock, Volume Change Measurement](#)

6 mm outside diameter x 4 mm inside diameter. For use up to a pressure of 3500 kPa. Priced per metre.



## Nylon Tubing 30 Metre Length.

Code: [26-1769](#)

Product Group: [Air/Water Pressure Systems - up to 1000 kPa](#)

30 metre length. For pressures up to 1700 kPa. Used for connecting Air Compressors to Pneumatic Pressure Reducing Panels, or for connecting two Pressure Reducing Panels together.

## Further Information

Nylon tubing 30 metres with pressure fittings.



## 50mm Triaxial Cell 1700Kpa with 5 Pressure/ Drainage Ports. Supplied with Two Valves.

Code: 25-4047

Product Group: Triaxial Cell, Triaxial Cells

- Working pressure up to 1700 kPa
- All round visibility
- Sample sizes 38 to 100 mm diameter
- Rapid assembly and dismantling
- Accepts a range of interchangeable submersible load transducers

This range of precision made triaxial cells has been designed to meet the requirements of the modern soils laboratory. The cells have been treated to minimise corrosion. Particular attention has been paid to the quality of finish between the piston and the head. Final assembly includes the fitting of an O-ring seal and the use of special lubricant to reduce friction to a minimum and eliminate water leakage.

The piston load capacity is designed to accept high horizontal forces which may be present during the final stages of a test. Each cell has five take-off positions drilled in the base for top drainage/back pressure, pore water pressure and bottom drainage. Two no-volume change valves and an anvil for strain gauge/transducer datum are supplied for fitting to the cell.

A feature of these cells is that they all accept a single diameter piston. The internal height is such that a range of submersible load transducers can be fitted without any modification. Each cell will accept a range of base adaptors and various accessories for testing a wide range of specimens

## Standards

BS 1377, ASTM D2850, ASTM D4767, AASHTO T296, AASHTO T297

## Specification

Cell size	50 mm
Max specimen size	50 x 100 mm
Working pressure	1700 kPa
Max piston load	45 kN
Vertical clearance required	380 mm
Horizontal clearance required	155 mm
Weight kg	4



## 38mm/1.5 Inch Base Adaptor for 50mm Cells.

Code: [25-4166](#)

Product Group: [Base Pedestals, Specimen Base Adaptors](#)

38mm/1.5 Inch Base Adaptor with Twin Pore Pressure Ports for 50mm Cells.

## Standards

BS 1377, ASTM D2850, ASTM D4767, AASHTO T296, AASHTO T297



## Membrane Placing Tool 35mm/38mm.

Code: [25-4290](#)

Product Group: [Membrane Placing Tools, O-Ring Placing Tools](#)

Membrane Placing Tool For 35Mm/1.4 Inch And 38Mm/1.5 Inch Samples.

## Standards

ASTM D2850, ASTM D4767, ASTM D5084, AASHTO T296, AASHTO T297, ASTM D7181



## Suction Membrane Device 38mm/1.5 Inch Diameter.

Code: [25-5100](#)

Product Group: [Suction Membrane Devices, Suction Membrane Device](#)

Suction Membrane Device For 38Mm/1.5 Inch Samples.





## Two-Way Split Former 38mm/1.5 Inch Diameter.

Code: [25-5120](#)

Product Group: [Two-way Split Formers](#), [Two-Way Split Formers](#)

Two-Way Split Former For 38Mm/1.5 Inch Samples.

## Pressure Pad 38mm/1.5 Inch Diameter.

Code: [25-5050](#)

Product Group: [Pressure Pads](#)

38 mm / 1.5 Inch diameter pressure pad. The pad shall have two empty ports and will come complete with two blanking plugs, plastic tubing and connector. Suitable For both drained and undrained tests.



## Standards

ASTM D2850, ASTM D4767, ASTM D7181, AASHTO T296, AASHTO T297



## Rubber Membrane 38mm/1.5 Inch Diameter. Pack of 10.

Code: [25-5061](#)

Product Group: [Rubber Membranes](#)

Rubber Membrane For 38Mm/1.5 Inch Samples  
(Pack Of 10).

### Standards

AASHTO T296, AASHTO T297, ASTM D2850, ASTM D4767, ASTM D5084, ASTM D7181



## Membrane Sealing Ring 38mm/1.5 Inch Diameter. Pack of 10.

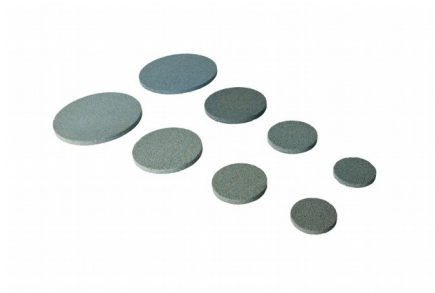
Code: [25-5081](#)

Product Group: [Membrane Sealing Rings](#)

Membrane Sealing Ring 38Mm Diameter (Pack Of 10).

### Standards

AASHTO T296, AASHTO T297, ASTM D2850, ASTM D4767, ASTM D5084



## **Porous Disc 38mm/1.5 inch Diameter. Pack of 2.**

Code: [25-5181](#)

Product Group: [Accessories for CU/CU effective stress, Porous Stones](#)

Porous disc for 38 mm/1.5 inch samples (Pack of 2).



## **Filter Paper Drain 38mm/1.5 inch Diameter. Pack of 50.**

Code: [25-5200](#)

Product Group: [Accessories for CU/CU effective stress, Filter Paper Drains](#)

Filter paper drain 38 mm diameter (Pack of 50).



## Piston Restraint Clamp for Ele Triaxial Cells

Code: [25-4200](#)

Product Group: [Aggressive Materials, General Cell Accessories](#)

For ELE Triaxial Cells Manufactured From July 1996.

## Standards

BS 1377, ASTM D2850, ASTM D4767, AASHTO T296, AASHTO T297

## Further Information

To lock the loading piston into position





## Valve No Volume Change 1/4 Inch BSp Fitted with 6 mm Connector and Integral Sealing Ring.

Code: [25-4520](#)

Product Group: [General Cell Accessories,](#)  
[Accessories for CU/CU effective stress](#)

### Standards

ASTM D2850, ASTM D4767, ASTM D7181, AASHTO T296, AASHTO T297



## Consolidation Frame One Dimensional Consolidation Incremental Loading Device.

Code: 25-0402

Product Group: Consolidation Apparatus, Table Top Consolidation Apparatus

- High capacity - 8800 kPa on 50 mm diameter specimens using 11:1 beam ratio
- Triple beam ratio, 9:1, 10:1, 11:1
- Compact unit ensures maximum space saving

The ELE Oedometer is rigidly constructed to ensure minimum frame distortion. The frame is designed to load the specimen through a yoke assembly and one of three alternative beam ratios. The beam is fitted with a counterbalance weight and beam support jack. The cell platform will accept the complete range of ELE consolidation cells and is fitted with a central spigot to ensure accurate centring of the cell under the loading yoke. Dimensions without hanger 711 x 203 x 508 mm (l x w x h). Weight 22 kg.

## Standards

ASTM D2435, ASTM D4546, AASHTO T216, ASTM D3877, BS 1377-5

## Further Information

Supplied without dial gauge and weights.

## Specification

Load Capacity	48 tons/sq. ft. (5,148 kPa) on 2.5" (63 mm) diam. samples.
Loading Beam	Cast aluminum; counterbalanced; 9:1, 10:1 and 11:1 ratios.
Frame	Cast aluminum; integral beam support jack; plated steel and platform.
Dimensions	203 x 711 x 508 mm, (8" w. x 28" d. x 20" h) . excluding weight hanger.
Weight	(Net 30 lbs). 13.6 kg; Shpg. 40 lbs. (18.1 kg).

## Spares/Consumables



## Electronic Digital Indicator, 0.600"/15 mm range

Code: 88-4210



## Set of Weights 100Kg Total Weight.

Code: [25-0408](#)

Product Group: [Consolidation Apparatus](#)

9 x 10 kg, 1 x 5 kg, 2 x 2 kg, 1 x 1 kg.

## Standards

ASTM D2435, ASTM D4546, AASHTO T216, ASTM D3877, BS 1377-5



## Consolidation Cell/ Oedometer Complete 75mm Diameter Sample

Code: [25-0503](#)

Product Group: [Table Top Consolidation Apparatus](#),  
[BS EN consolidation cells and accessories](#),  
[Pneumatic Consolidation Apparatus](#), [Fixed Ring Consolidation](#)

## Specification

Application	BS/EN 10:1
Specimen Dia	75 mm
Specimen area	4418 mm <sup>2</sup>
Beam ratio	9:1
Load kg	1
Stress	20 kPa
Typical max stress	3.2 MPa
Stress for 1 kg m <sup>2</sup>	20 kPa
Application	BS
Specimen Diameter	75 mm
Specimen Area	4418 mm <sup>2</sup>
Beam Ratio	10:01
Load	1 kg
Stress	20 kPa
Typical Maximum Stress	3.2 MPa
Stress for 1 kg	20 kPa

## Spares/Consumables



### 75mm Dia Upper and Lower Porous Stones for Use on EL25-0503 Series Cell.

Code: [25-0503/13](#)



### Cutting Ring 75mm Cell.

Code: [25-0506](#)



## Calibration Disc 75mm Cell

Code: [25-0509](#)

Product Group: [BS EN consolidation cells and accessories](#), [Fixed Ring Consolidation](#)

## Standards

BS 1377-5



## Consolidation Transducer Assembly 10mm Travel Fitted with 5 Pin Din Plug.

Code: [27-1649](#)

Product Group: [Displacement Measurement](#),  
[Displacement Transducers](#), [Vertical settlement measurement](#)

Fitted with 5 pin DIN plug.

## Specification

Construction	Fully encapsulated electronics, sealed in a stainless steel case
Excitation	11 V DC
Connector	5-pin DIN type
Mounting bracket	Included as standard
Weight kg	0.45

## Spares/Consumables



### CBR Displacement Transducer

Code: [27-1706](#)





## Digital Direct/Residual Shear Apparatus Complete with Lever Loading Assembly. 220-240V 50/60Hz 1Ph.

Code: 26-2114/01

Product Group: [Direct/Residual Shear Apparatus](#),  
[Direct/Residual Shear Apparatus](#)

- Microprocessor control
- Large on-board LCD screen display
- Direct entry via touch sensitive keyboard
- Rapid approach and return to start datum
- Fully variable speed, 0.00001 to 9.99999 mm/minute
- Accepts specimens up to 100 mm square

The ELE Direct Shear Apparatus accepts specimens 60 mm, 100 mm square or 2.5 inches in diameter. The use of a microprocessor controlled drive system and keyboard entry gives the apparatus a wide range of features that include pause and speed reset during test, RS 232C interface, operator programming of speed and control functions, self test diagnostics and many other features. A return to start datum provides a positive means of reversing the shearbox when either preparing for a new test or continuing with residual testing procedures.

Safety forward/reverse travel limit switches are fitted as standard and monitored through the electronics system control.

The electronics are housed in a modern moulded shroud, which includes a large LCD display and keyboard entry. The apparatus is enclosed in a robustly constructed case, has been designed for floor mounting and is supplied complete with carriage, loading hanger and 10:1 lever loading device.

## Standards

ASTM D3080, AASHTO T236, BS 1377, EN 1997-2

## Further Information

for 220 - 240 V AC, 50 - 60 Hz, 1 ph.

## Specification

Sample Size

Accepts either 2.42", 2.5" diam.; 60 mm square samples using accessory shear box assemblies, not included.

Speed Range

Variable in either English or Metric units

Shear Force  
Vertical Load

Dimensions

Weight

between 0.000001"  
(0.00001 mm) to 0.399999"  
(9.99999  
mm) per minute.  
1,000 lbf. (4.5 kN) maximum.  
2,200 lbf. (10.0 kN) using 10:1  
lever ratio.  
44.7" l. x 12 .6" w. x 49.6" h.  
(1,135 x 320 x 1,260 mm).  
Net 181 lbs. (82 kg).

## Spares/Consumables



### Dial Indicator - 1.0" Range

Code: [88-4100](#)



### Electronic Digital Indicator, 0.600"/15 mm range

Code: [88-4210](#)



### Vertical Dial Indicator, English

Code: [25-0445](#)



## S-Type Load Cell 5 kN.for Use with Direct/Residual Shear Machine. Fitted with 5 Pin Din Plug.

Code: [27-1561](#)

Product Group: [Measurement of Load \(Shear Stress\), Load Measurement](#)

- Repeatability better than  $\pm 0.02\%$  of rated output
- Non-Linearity better than  $\pm 0.03\%$  of rated output
- Supplied complete with 5-pin DIN type connector for connection to GDU

Ideally suited for a wide range of applications, ELE S-type load cells provide high accuracy and minimum deformation. Various models are available, with the necessary adaptors, for use with ELE Triaxial Load Frames, Multiplex 50/Marshall Test 50/CBR Test 50 and Direct Shear machine.

## Standards

BS 1377, ASTM D3080

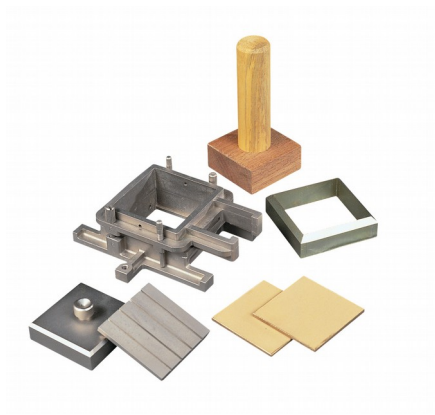


## Set of Weights 50 kg Slotted.

Code: [26-2132](#)

Product Group: [Application of Normal Stress](#)

Normal stress is applied to the specimen through the lever loading device and the appropriate slotted weights



## Specimen Cutter 60mm Sq.

Code: [26-2185](#)

Product Group: [Shearbox Assemblies- Accessories and Spares](#)

## Standards

ASTM D3080, AASHTO T236

## Spares/Consumables



## Specimen Cutter 100mmsq.

Code: [26-2201](#)



## Specimen Cutter 2.5 Inch Diameter.

Code: [26-2217](#)



## Horizontal Displacement Transducer Assembly 15mm Travel 5 Pin Din Plug Mounting Pillar

Code: [27-1697](#)

Product Group: [Displacement Transducers, Measurement of Horizontal and Vertical Movement, Displacement Measurement](#)

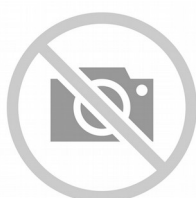
- Ideally suited for use with GDU for accurate displacement measurements
- Models available for use in consolidation, shear, CBR and triaxial test applications
- Supplied complete with mounting hardware for specified products

Displacement Transducers are used in consolidation, shear, CBR and triaxial test applications for accurate displacement measurements. They are supplied complete with a 5-pin DIN type connector for direct connection to the GDU.

## Specification

Construction	Fully encapsulated electronics, sealed in a stainless steel case
Excitation	13 V DC
Connector	5-pin DIN type
Mounting bracket	Included as standard
Weight kg	0.45
Construction	Fully encapsulated electronics, sealed in a stainless steel case.
Excitation	10vDC.
Connector	5-Pin DIN type.
Mounting Bracket	Included as standard.
Weight	Net 1 lb. (0.45 kg).

## Spares/Consumables



### CBR Displacement Transducer

Code: [27-1706](#)



## Vertical Displacement Transducer Assembly 15mm Travel with 5 Pin Din Plug Bracket for Shear Box

Code: [27-1689](#)

Product Group: [Displacement Transducers, Measurement of Horizontal and Vertical Movement, Displacement Measurement](#)

0 to 10 mm range. For use with Direct/Residual Shear Machines. •Ideally suited for use with GDU for accurate displacement measurements

- Models available for use in consolidation, shear, CBR and triaxial test applications
- Supplied complete with mounting hardware for specified products

Displacement Transducers are used in consolidation, shear, CBR and triaxial test applications for accurate displacement measurements. They are supplied complete with a 5-pin DIN type connector for direct connection to the GDU.

## Specification

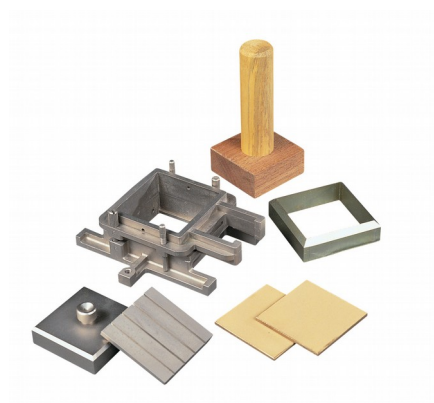
Construction	Fully encapsulated electronics, sealed in a stainless steel case
Excitation	12 V DC
Connector	5-pin DIN type
Mounting bracket	Included as standard
Weight kg	0.45
Construction	Fully encapsulated electronics, sealed in a stainless steel case.
Excitation	10vDC.
Connector	5-Pin DIN type.
Mounting Bracket	Included as standard.
Weight	Net 1 lb. (0.45 kg).

## Spares/Consumables



## CBR Displacement Transducer

Code: [27-1706](#)



## Shear Box Assembly 60mm Sq.

Code: [26-2181](#)

Product Group: [Shear Box Assemblies](#), [Shear Box Assemblies](#)

- Manufactured from corrosion resistant materials
- Sample size 60 x 60mm x 25mm high meeting BS 1377
- Incorporates PTFE faced box separation screws to reduce friction
- Supplied complete with upper and lower porous plates and loading pad
- Suitable for quick undrained or drained/residual tests

## Standards

BS 1377, EN 1997-2, ASTM D3080, AASHTO T236

## Further Information

All shearbox assemblies are designed to fit the carriage of 26-2114 series Digital Direct/Residual Shear Apparatus. They are supplied complete with three porous plates, one retaining plate and a loading pad. The three sizes supplied comply with the relevant requirements of BS 1377 and ASTM D3080. All assemblies can be used for quick shear tests or drained/residual shear tests.

Optional accessories are available including specimen cutters and extrusion tools.

## Specification

Specimen area	60 x 60 mm
Specimen thickness	25 mm
Weight kg	2
Relevant standard	BS 1377

## Spares/Consumables



## Porous Plate 60mm Sq.

Code: [26-2181/10](#)





## Specimen Cutter 60mm Sq.

Code: 26-2185



## Specimen Extrusion Tool 60 mm sq.

Code: 26-2189



## GDU 8 Channel Data Acquisition Unit 220-240 V 50/60 Hz, 1 Ph.

Code: 27-1500/01

Product Group: Data Logging with the GDU, Geotechnical Data Acquisition Unit (GDU), Automatic Data Acquisition - CBR, Automatic Data Acquisition - Triaxial, Automatic Data Acquisition - Consolidation, Automatic Data Acquisition - Direct Shear

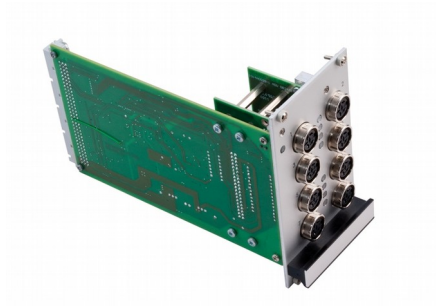
The GDU is a stand-alone, multi-tasking, multi-channel data logger, that is reliable and powerful, enabling it to co-ordinate test data from the range of ELE transducers required for various test methods.

The ELE Geotechnical Software package (DS7.1), in conjunction with the GDU and a range of transducers, are the two central components required to create a modern turnkey soil testing system. Being fully modular it can be adapted to a wide range of soil testing laboratory configurations.

- For performing CBR, Consolidation, Direct/Residual Shear and Total & Effective Stress Triaxial tests
- 8 Channels expandable to 32 for performing multiple, concurrent tests for cost savings
- Independent signal conditioning on each channel to maintain data accuracy
- Field-upgradeable software, meaning no downtime for future software and functionality upgrades
- Extended warranty.

## Specification

Case	Aluminum, free standing; houses power supply, analog to digital conversion module and an 8-channel analog input module with transducer energization.
Sockets	Standard 5-pin DIN type.
Input Range	$\pm 5$ volts to $\pm 10$ mV full scale.
Transducer Supply	10vDC.
Dimensions	12.8" w. x 14.3" d. x 6.1" h. (325 x 363 x 155 mm).
Weight	Net 14.08 lbs. (6.4 kg).



## 8-Channel Expansion Analog Input Module

Code: [27-1505](#)

Product Group: [Geotechnical Data Acquisition Unit \(GDU\)](#)



## **DS7.2 Software-UU/CU/CD Triaxial, Permeability, Consolidation, Direct/Residual Shear, CBR**

Code: [S1160](#)

Product Group: [DS7](#), [DS7.2 Geotechnical Software General Module](#)

- Programs available for Triaxial, Permeability Consolidation, Direct/Residual Shear and CBR tests
- Full support for Windows 7 and MS Word 2007/2010
- Accurate and repeatable test procedures
- 24 hour unsupervised logging
- Eliminate the possibility of errors while taking manual readings
- Tests are run with step-by-step instructions selectable between BS and ASTM/AASHTO standards
- Automatic report generation in accordance with the above standards
- Real-time graphical outputs to both screen and printer as required