



IF IT'S WORTH BUILDING, IT'S WORTH TESTING

This wishlist was generated on 17/01/2017, and contains the following Products:

38-0200/01

ELE Flame Photometer

38-0320/01

Air Compressor

38-0250

Calcium Filter

38-0260

Barium Filter

38-0270

Regulators for Natural Gas

38-0280

Regulators for Propane Gas

38-1000

Blaine Air Permeability Apparatus

38-2010

Vicat Frame

38-2110

EN Initial and Final Set Needle

38-2300

EN Vicat Mould

38-2200

Vicat Mould

38-2660

ASTM Vicat Mould

38-2620

ASTM Initial Set Needle

38-2015/01

Automatic Vicat Apparatus

38-2015/15

Mould Tank

38-2015/12

Needle Cleaning Device

38-3005

Le Chatelier Mould

38-3205

Extensibility of Mould Apparatus EN

38-3200

Extensibility of Mould Apparatus BS

38-3300

Tamping Rod

38-3420/01

Le Chatelier Water Bath



ELE Flame Photometer

Code: [38-0200/01](#)

Product Group: [ELE Flame Photometer](#)

Special Note: The Flame Photometer requires a source of moisture-free air at 6 litres/minute at a pressure of 1 kg/cm². It also requires a fuel source for the flame and a regulator (see accessories).

Standards

EN 196-21, ASTM C114, TEST 17

Further Information

****NOT AVAILABLE FOR SALE IN THE USA****

For 220-240 V AC, 50-60 Hz, 1 ph

Specification

Dimensions (l x w x h)	420 x 360 x 300 mm
Readout	LED three 12.5 mm digits
Sensitivity Na	3 to 100 ppm
K	3 to 100 ppm
Ca	5 to 100 ppm (optional filter)
Reproducibility	1% CV for 20 consecutive samples using 10 ppm, set to read 100
Recorder Output	Nominal 1.00 V for a reading of 100.0
Weight	8 kg

Accessories



Air Compressor

Code: [38-0320/01](#)



Barium Filter

Code: 38-0260



Calcium Filter

Code: 38-0250



Regulators for Natural Gas

Code: 38-0270



Regulators for Propane Gas

Code: 38-0280



Air Compressor

Code: [38-0320/01](#)

Product Group: [ELE Flame Photometer](#)

Supplies air at 6 litres/minute at a pressure of 1 kg/cm², for use with 38-0200/01 Flame Photometer.

Standards

EN 196-21, ASTM C114, TEST 17

Further Information

****NOT AVAILABLE FOR SALE IN THE USA****



Calcium Filter

Code: [38-0250](#)

Product Group: [ELE Flame Photometer](#)

Standards

EN 196-21, ASTM C114, TEST 17

Further Information

****NOT AVAILABLE FOR SALE IN THE USA****



Barium Filter

Code: [38-0260](#)

Product Group: [ELE Flame Photometer](#)

Standards

EN 196-21, ASTM C114, TEST 17

Further Information

****NOT AVAILABLE FOR SALE IN THE USA****



Regulators for Natural Gas

Code: [38-0270](#)

Product Group: [ELE Flame Photometer](#)

Standards

EN 196-21, ASTM C114, TEST 17

Further Information

****NOT AVAILABLE FOR SALE IN THE USA****



Regulators for Propane Gas

Code: [38-0280](#)

Product Group: [ELE Flame Photometer](#)

Standards

EN 196-21, ASTM C114, TEST 17

Further Information

****NOT AVAILABLE FOR SALE IN THE USA****



Blaine Air Permeability Apparatus

Code: 38-1000

Product Group: Blaine Fineness Apparatus,
Determination of Fineness Blaine Apparatus

Standards

EN 196-6, EN 459-2, EN 13286-44, BS 4359-2, ASTM C204, AASHTO T153

Specification

Cell	Stainless steel; 12.70 \pm 0.10 mm i.d.
Disk	0.9 \pm 0.1 mm thick with 30-40 one mm diam. holes.
Plunger	Stainless steel.
Manometer	U-tube glass with ground joint, stop cock and rubber bulb assembly.
Filter Paper	12.70 mm diam.
Fluid	Pure Mineral Oil.
Weight	Net 7 lbs. (3.2 kg).

Accessories



Electronic Balance - 620 g x 0.001 g

Code: 78-5405/01



Filter Papers

Code: [38-0650](#)



Pure Mineral Oil 1 Litre Bottle.

Code: [38-0620](#)



Reference Cement

Code: [38-0640](#)



Timer Clock

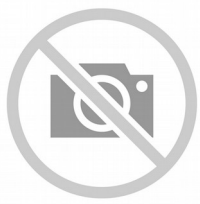
Code: [81-0518](#)

Spares/Consumables



Blaine Air Permeability Cell

Code: [38-1000/15](#)



Filter Paper

Code: [38-0652](#)



Manometer U-tube

Code: [38-1000/10](#)



Vicat Frame

Code: [38-2010](#)

Product Group: [Vicat Method](#)

Complete with consistency plunger, 10 mm diameter.
Requires one initial or final set needle to make up test weight to 300g.

Standards

EN 196-3, EN 13454-2, ASTM C187, ASTM C191

Further Information

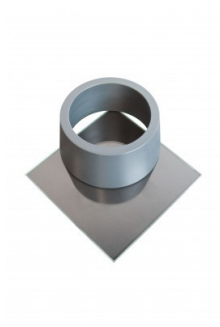
****NOT AVAILABLE FOR SALE IN THE USA****

Accessories

ASTM Initial Set Needle

Code: [38-2620](#)





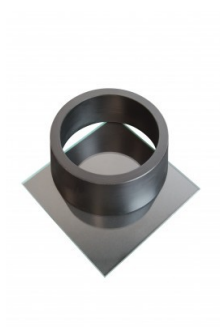
ASTM Vicat Mould

Code: [38-2660](#)



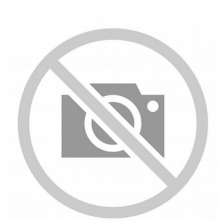
EN Initial and Final Set Needle

Code: [38-2110](#)



EN Vicat Mould

Code: [38-2300](#)



Engineer's Steel Rule

Code: [81-0805](#)



Harvard Trip Balance

Code: [78-7090](#)



Timer Clock

Code: [81-0518](#)



Vicat Mould

Code: [38-2200](#)



Weights for Harvard Trip Balance

Code: [78-7110](#)

Spares/Consumables



Consistency Plunger

Code: [38-2010/10](#)





EN Initial and Final Set Needle

Code: [38-2110](#)

Product Group: [Vicat Method](#)

1.13mm diameter and 1.13mm diameter with special footing.

Standards

ASTM C187, ASTM C191

Further Information

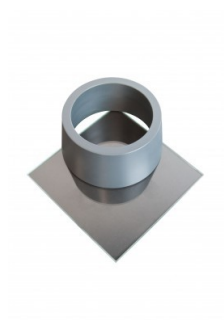
****NOT AVAILABLE FOR SALE IN THE USA****

Accessories

ASTM Initial Set Needle

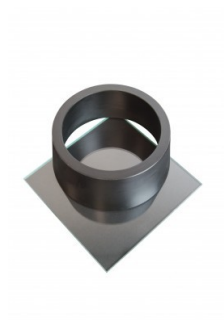
Code: [38-2620](#)





ASTM Vicat Mould

Code: [38-2660](#)



EN Vicat Mould

Code: [38-2300](#)



Engineer's Steel Rule

Code: [81-0805](#)



Harvard Trip Balance

Code: [78-7090](#)



Timer Clock

Code: [81-0518](#)

Vicat Mould

Code: [38-2200](#)



Weights for Harvard Trip Balance

Code: [78-7110](#)

Spares/Consumables

Consistency Plunger

Code: [38-2010/10](#)

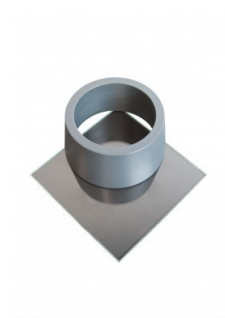


Alternatives

ASTM Initial Set Needle

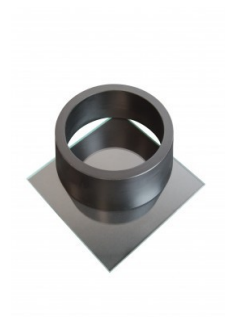
Code: [38-2620](#)





ASTM Vicat Mould

Code: [38-2660](#)



EN Vicat Mould

Code: [38-2300](#)



Engineer's Steel Rule

Code: [81-0805](#)



Harvard Trip Balance

Code: [78-7090](#)



Timer Clock

Code: [81-0518](#)

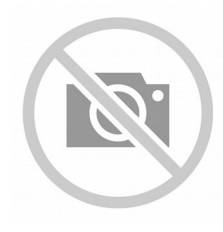
Vicat Mould

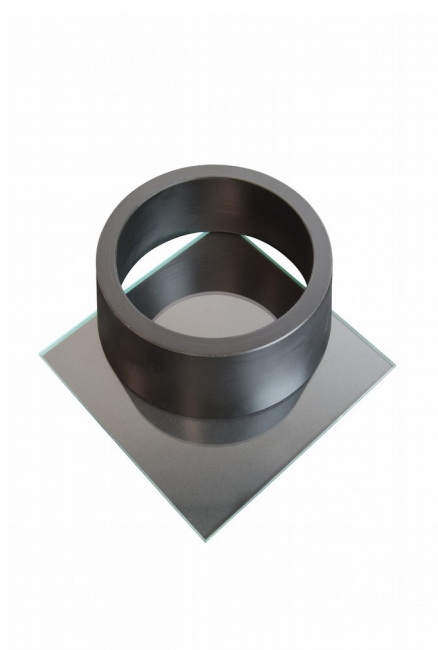
Code: [38-2200](#)



Weights for Harvard Trip Balance

Code: [78-7110](#)





EN Vicat Mould

Code: [38-2300](#)

Product Group: [Vicat Method, Automatic Vicat](#)

Accessory: manufactured from a hard rubber compound and supplied complete with a glass base plate.

Standards

EN 196-3

Further Information

****NOT AVAILABLE FOR SALE IN THE USA****

Accessories

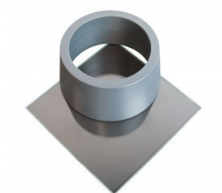
ASTM Initial Set Needle

Code: [38-2620](#)



ASTM Vicat Mould

Code: 38-2660



EN Initial and Final Set Needle

Code: 38-2110



Vicat Mould

Code: 38-2200



Spares/Consumables

Consistency Plunger

Code: 38-2010/10

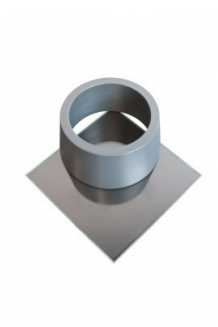


Alternatives



ASTM Initial Set Needle

Code: [38-2620](#)



ASTM Vicat Mould

Code: [38-2660](#)



EN Initial and Final Set Needle

Code: [38-2110](#)



Vicat Mould

Code: [38-2200](#)



Vicat Mould

Code: [38-2200](#)

Product Group: [Vicat Method, Automatic Vicat](#)

Accessory: manufactured from brass and supplied complete with a ring and glass base plate.

Further Information

****NOT AVAILABLE FOR SALE IN THE USA****

Accessories

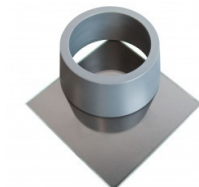
ASTM Initial Set Needle

Code: [38-2620](#)



ASTM Vicat Mould

Code: [38-2660](#)



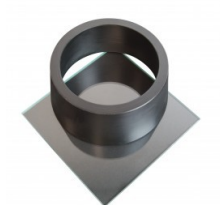
EN Initial and Final Set Needle

Code: [38-2110](#)



EN Vicat Mould

Code: [38-2300](#)



Spares/Consumables

Consistency Plunger

Code: [38-2010/10](#)

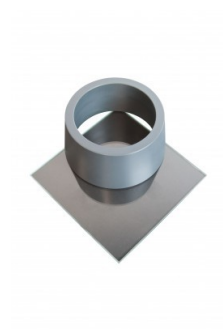


Alternatives

ASTM Initial Set Needle

Code: [38-2620](#)





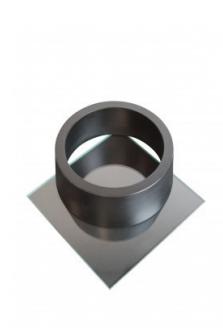
ASTM Vicat Mould

Code: [38-2660](#)



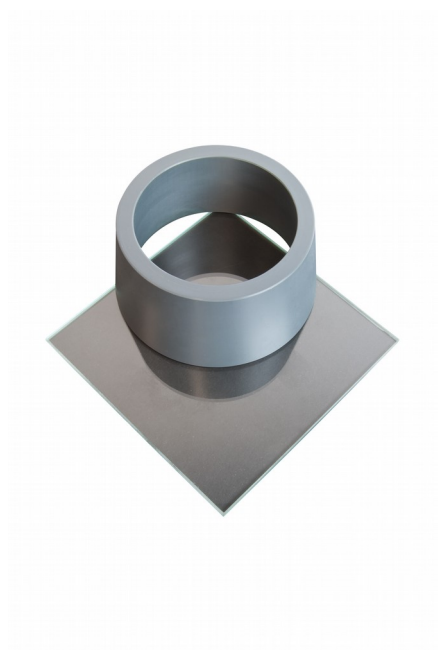
EN Initial and Final Set Needle

Code: [38-2110](#)



EN Vicat Mould

Code: [38-2300](#)



ASTM Vicat Mould

Code: [38-2660](#)

Product Group: [Vicat Apparatus](#), [Vicat Method](#),
[Automatic Vicat](#)

Accessory: manufactured from non-absorbent plastic
and supplied complete with a glass base plate.

Standards

ASTM C187, ASTM C191

Accessories

ASTM Initial Set Needle

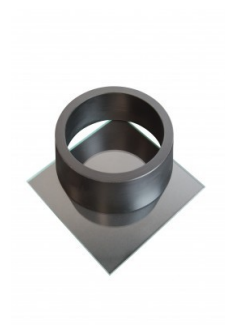
Code: [38-2620](#)



EN Initial and Final Set Needle

Code: [38-2110](#)





EN Vicat Mould

Code: [38-2300](#)



Engineer's Steel Rule

Code: [81-0805](#)



Harvard Trip Balance

Code: [78-7090](#)



Timer Clock

Code: [81-0518](#)



Vicat Mould

Code: [38-2200](#)



Weights for Harvard Trip Balance

Code: [78-7110](#)

Spares/Consumables



Consistency Plunger

Code: [38-2010/10](#)

Alternatives



ASTM Initial Set Needle

Code: [38-2620](#)

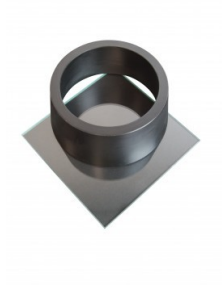
EN Initial and Final Set Needle

Code: [38-2110](#)



EN Vicat Mould

Code: [38-2300](#)



Engineer's Steel Rule

Code: [81-0805](#)



Harvard Trip Balance

Code: [78-7090](#)



Timer Clock

Code: [81-0518](#)



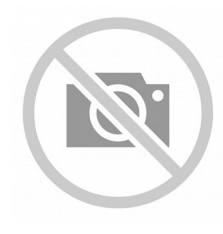
Vicat Mould

Code: [38-2200](#)



Weights for Harvard Trip Balance

Code: [78-7110](#)





ASTM Initial Set Needle

Code: [38-2620](#)

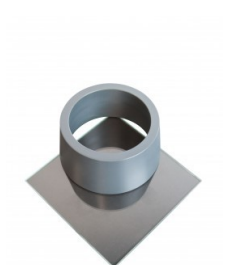
Product Group: [Vicat Apparatus, Vicat Method](#)

1 mm diameter.

Standards

ASTM C187, ASTM C191

Accessories



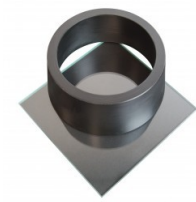
ASTM Vicat Mould

Code: [38-2660](#)



EN Initial and Final Set Needle

Code: [38-2110](#)



EN Vicat Mould

Code: [38-2300](#)



Engineer's Steel Rule

Code: [81-0805](#)



Harvard Trip Balance

Code: [78-7090](#)



Timer Clock

Code: [81-0518](#)

Vicat Mould

Code: 38-2200



Weights for Harvard Trip Balance

Code: 78-7110

Spares/Consumables

Consistency Plunger

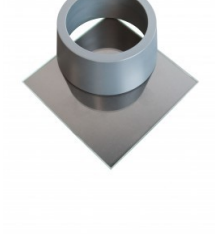
Code: 38-2010/10



Alternatives

ASTM Vicat Mould

Code: 38-2660



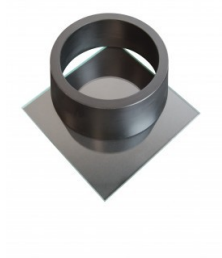
EN Initial and Final Set Needle

Code: [38-2110](#)



EN Vicat Mould

Code: [38-2300](#)



Engineer's Steel Rule

Code: [81-0805](#)



Harvard Trip Balance

Code: [78-7090](#)



Timer Clock

Code: [81-0518](#)



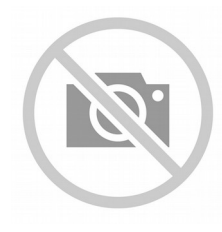
Vicat Mould

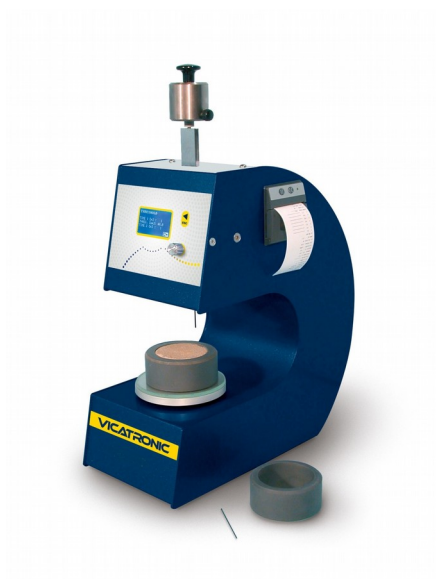
Code: [38-2200](#)



Weights for Harvard Trip Balance

Code: [78-7110](#)





Automatic Vicat Apparatus

Code: [38-2015/01](#)

Product Group: [Automatic Vicat](#)

Complete with EN and ASTM Initial and Final needles, Consistency Plunger, Windows(R) software and RS232 cable, 1 x EN and ASTM Mould and Glass Plate. Suitable for continuous use in saturated humidity, at a controlled temperature of $20^{\circ}\text{C} \pm 1^{\circ}\text{C}$.

Standards

ASTM C187, ASTM C191

Further Information

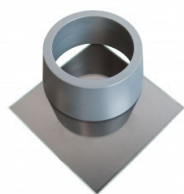
****NOT AVAILABLE FOR SALE IN THE USA****

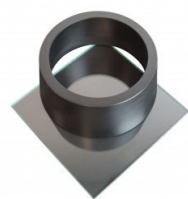
For 220 - 240 V AC, 50 - 60 Hz, 1 ph.

Accessories

ASTM Vicat Mould

Code: [38-2660](#)





EN Vicat Mould

Code: [38-2300](#)



Mould Tank

Code: [38-2015/15](#)



Needle Cleaning Device

Code: [38-2015/12](#)



Printer Paper Rolls

Code: [38-2015/14](#)



Vicat Mould

Code: [38-2200](#)

Spares/Consumables



ASTM Initial and Final Set Needle

Code: [38-2023](#)



Consistency Plunger

Code: [38-2015/16](#)



EN Initial and Final Set Needle

Code: [38-2021](#)



Mould Tank

Code: [38-2015/15](#)

Product Group: [Automatic Vicat](#)

Accessory: for testing samples under water as per EN 196-3, for use in temperature controlled laboratories.

Standards

ASTM C187, ASTM C191

Further Information

****NOT AVAILABLE FOR SALE IN THE USA****



Needle Cleaning Device

Code: [38-2015/12](#)

Product Group: [Automatic Vicat](#)

Accessory.

Standards

ASTM C187, ASTM C191

Further Information

****NOT AVAILABLE FOR SALE IN THE USA****



Le Chatelier Mould

Code: 38-3005

Product Group: General Expansion of Dry Hydrated Lime by the Le Chatelier Method, Soundness of Cement Paste by the Le Chatelier Method, Soundness

Comprising a split cylinder fitted with two indicator stems. The mould is supplied complete with two glass plates and a weight 100 g \pm 10 g. Three moulds required for each test.

Standards

BS 6463, EN 196-3, EN 459-2

Further Information

****NOT AVAILABLE FOR SALE IN THE USA****

Accessories



Extensibility of Mould Apparatus BS

Code: 38-3200



Extensibility of Mould Apparatus EN

Code: 38-3205



Le Chatelier Water Bath

Code: 38-3420/01



Tamping Rod

Code: [38-3300](#)



Trowel - Gauging

Code: [81-0335](#)



Extensibility of Mould Apparatus EN

Code: 38-3205

Product Group: General Expansion of Dry Hydrated Lime by the Le Chatelier Method

Conforms to EN196-3, 459-2. The unit comprises a metal sleeve with a hook and set screw to fit over one of the mould pointers, and a clamp to fit onto the other pointer of the mould. Supplied complete with one weight 300 g \pm 1 g.

Standards

EN 196-3

Further Information

NOT AVAILABLE FOR SALE IN THE USA

Accessories



Tamping Rod

Code: 38-3300

Alternatives



Tamping Rod

Code: 38-3300



Extensibility of Mould Apparatus BS

Code: [38-3200](#)

Product Group: [General Expansion of Dry Hydrated Lime by the Le Chatelier Method](#)

Conforms to BS 6463. The unit comprises a metal sleeve with a hook and set screw to fit over one of the mould pointers, and a clamp to fit onto the other pointer of the mould. Supplied complete with one weight 100 g \pm 1 g.

Standards

EN 196-3

Further Information

****NOT AVAILABLE FOR SALE IN THE USA****

Accessories



Le Chatelier Water Bath

Code: [38-3420/01](#)



Tamping Rod

Code: [38-3300](#)



Trowel - Gauging

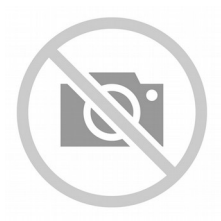
Code: [81-0335](#)

Alternatives



Le Chatelier Water Bath

Code: [38-3420/01](#)



Tamping Rod

Code: [38-3300](#)



Trowel - Gauging

Code: [81-0335](#)



Tamping Rod

Code: 38-3300

Product Group: General Expansion of Dry Hydrated Lime by the Le Chatelier Method

17 mm end diameter.

Further Information

NOT AVAILABLE FOR SALE IN THE USA

Accessories



Extensibility of Mould Apparatus BS

Code: 38-3200



Extensibility of Mould Apparatus EN

Code: 38-3205



Le Chatelier Water Bath

Code: 38-3420/01

Alternatives



Extensibility of Mould Apparatus BS

Code: 38-3200



Extensibility of Mould Apparatus EN

Code: 38-3205



Le Chatelier Water Bath

Code: 38-3420/01



Le Chatelier Water Bath

Code: [38-3420/01](#)

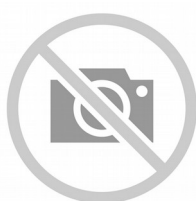
Product Group: [Soundness of Cement Paste by the Le Chatelier Method, Soundness](#)

Manufactured from corrosion resistant material, complete with a removable rack to hold up to twelve moulds and timer unit.

Further Information

****NOT AVAILABLE FOR SALE IN THE USA****

Accessories



Extensibility of Mould Apparatus BS

Code: [38-3200](#)



Tamping Rod

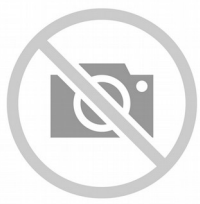
Code: [38-3300](#)



Trowel - Gauging

Code: [81-0335](#)

Alternatives



Extensibility of Mould Apparatus BS

Code: [38-3200](#)



Tamping Rod

Code: [38-3300](#)



Trowel - Gauging

Code: [81-0335](#)