



IF IT'S WORTH BUILDING, IT'S WORTH TESTING

This wishlist was generated on 17/01/2017, and contains the following Products:

---

38-0200/01

**ELE Flame Photometer**

---

38-0320/01

**Air Compressor**

---

38-1000

**Blaine Air Permeability Apparatus**

---

38-2010

**Vicat Frame**

---

38-2015/01

**Automatic Vicat Apparatus**

---

38-3005

**Le Chatelier Mould**

---

38-3420/01

**Le Chatelier Water Bath**

---

39-0035/01

**Automatic/Manual 5 litre nominal capacity Mortar Mixer**

---

39-1150/01

**Jolting Table 220 - 240 V 50 Hz**

---

SP39-1400/01

**Humidity Cabinet BS EN 150 Litre Capacity 50Hz**

---

39-6160/01

**ADR-Auto V2.0 250/25 Cement Machine C/W Compression and Flexural Jigs and Platen Sets**

---

80-0200/01

**ELE Sieve Shaker**

---

78-1215/01

**50 Litre Drying Oven**

---

83-4170/01

**Muffle Furnace**

---

---

38-3800/01

**Autoclave**

---

38-7087

**Air Entrainment Meter**

---

38-7600

**Spray Nozzle Apparatus**

---

38-6000

**Flow Table**

---



## ELE Flame Photometer

Code: [38-0200/01](#)

Product Group: [ELE Flame Photometer](#)

Special Note: The Flame Photometer requires a source of moisture-free air at 6 litres/minute at a pressure of 1 kg/cm<sup>2</sup>. It also requires a fuel source for the flame and a regulator (see accessories).

## Standards

EN 196-21, ASTM C114, TEST 17

## Further Information

**\*\*NOT AVAILABLE FOR SALE IN THE USA\*\***

For 220-240 V AC, 50-60 Hz, 1 ph

## Specification

Dimensions (l x w x h)	420 x 360 x 300 mm
Readout	LED three 12.5 mm digits
Sensitivity Na	3 to 100 ppm
K	3 to 100 ppm
Ca	5 to 100 ppm (optional filter)
Reproducibility	1% CV for 20 consecutive samples using 10 ppm, set to read 100
Recorder Output	Nominal 1.00 V for a reading of 100.0
Weight	8 kg

## Accessories



### Air Compressor

Code: [38-0320/01](#)



## Barium Filter

Code: 38-0260



## Calcium Filter

Code: 38-0250



## Regulators for Natural Gas

Code: 38-0270



## Regulators for Propane Gas

Code: 38-0280



## Air Compressor

Code: [38-0320/01](#)

Product Group: [ELE Flame Photometer](#)

Supplies air at 6 litres/minute at a pressure of 1 kg/cm<sup>2</sup>, for use with 38-0200/01 Flame Photometer.

## Standards

EN 196-21, ASTM C114, TEST 17

## Further Information

**\*\*NOT AVAILABLE FOR SALE IN THE USA\*\***



## Blaine Air Permeability Apparatus

Code: 38-1000

Product Group: Blaine Fineness Apparatus,  
Determination of Fineness Blaine Apparatus

## Standards

EN 196-6, EN 459-2, EN 13286-44, BS 4359-2, ASTM C204, AASHTO T153

## Specification

Cell	Stainless steel; 12.70 $\pm$ 0.10 mm i.d.
Disk	0.9 $\pm$ 0.1 mm thick with 30-40 one mm diam. holes.
Plunger	Stainless steel.
Manometer	U-tube glass with ground joint, stop cock and rubber bulb assembly.
Filter Paper	12.70 mm diam.
Fluid	Pure Mineral Oil.
Weight	Net 7 lbs. (3.2 kg).

## Accessories



## Electronic Balance - 620 g x 0.001 g

Code: 78-5405/01



## Filter Papers

Code: [38-0650](#)



## Pure Mineral Oil 1 Litre Bottle.

Code: [38-0620](#)



## Reference Cement

Code: [38-0640](#)



## Timer Clock

Code: [81-0518](#)

## Spares/Consumables



## Blaine Air Permeability Cell

Code: [38-1000/15](#)





## Filter Paper

Code: [38-0652](#)



## Manometer U-tube

Code: [38-1000/10](#)



## Vicat Frame

Code: [38-2010](#)

Product Group: [Vicat Method](#)

Complete with consistency plunger, 10 mm diameter.  
Requires one initial or final set needle to make up test weight to 300g.

## Standards

EN 196-3, EN 13454-2, ASTM C187, ASTM C191

## Further Information

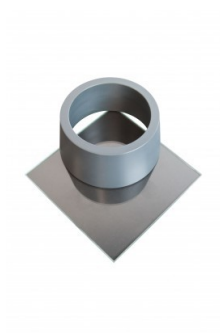
**\*\*NOT AVAILABLE FOR SALE IN THE USA\*\***

## Accessories

### ASTM Initial Set Needle

Code: [38-2620](#)





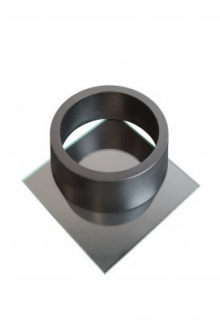
## ASTM Vicat Mould

Code: [38-2660](#)



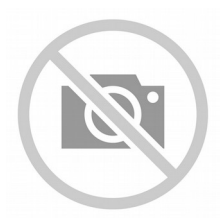
## EN Initial and Final Set Needle

Code: [38-2110](#)



## EN Vicat Mould

Code: [38-2300](#)



## Engineer's Steel Rule

Code: [81-0805](#)



## Harvard Trip Balance

Code: [78-7090](#)



## Timer Clock

Code: [81-0518](#)



## Vicat Mould

Code: [38-2200](#)



## Weights for Harvard Trip Balance

Code: [78-7110](#)

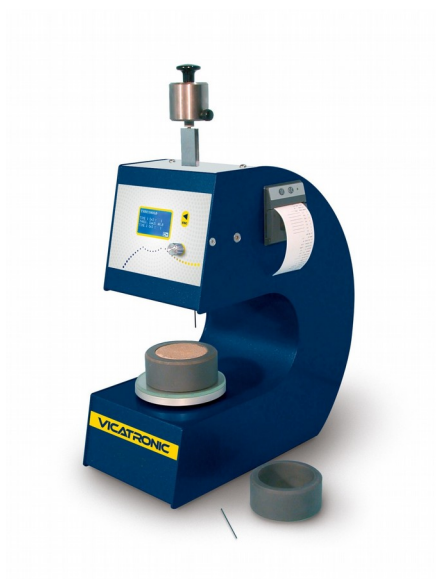
## Spares/Consumables



## Consistency Plunger

Code: [38-2010/10](#)





## Automatic Vicat Apparatus

Code: [38-2015/01](#)

Product Group: [Automatic Vicat](#)

Complete with EN and ASTM Initial and Final needles, Consistency Plunger, Windows(R) software and RS232 cable, 1 x EN and ASTM Mould and Glass Plate. Suitable for continuous use in saturated humidity, at a controlled temperature of  $20^{\circ}\text{C} \pm 1^{\circ}\text{C}$ .

## Standards

ASTM C187, ASTM C191

## Further Information

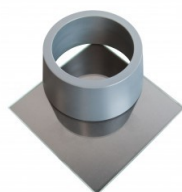
**\*\*NOT AVAILABLE FOR SALE IN THE USA\*\***

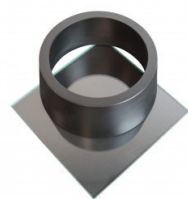
For 220 - 240 V AC, 50 - 60 Hz, 1 ph.

## Accessories

### ASTM Vicat Mould

Code: [38-2660](#)





## EN Vicat Mould

Code: [38-2300](#)



## Mould Tank

Code: [38-2015/15](#)



## Needle Cleaning Device

Code: [38-2015/12](#)



## Printer Paper Rolls

Code: [38-2015/14](#)



## Vicat Mould

Code: [38-2200](#)

## Spares/Consumables



### ASTM Initial and Final Set Needle

Code: [38-2023](#)



### Consistency Plunger

Code: [38-2015/16](#)



### EN Initial and Final Set Needle

Code: [38-2021](#)





## Le Chatelier Mould

Code: 38-3005

Product Group: General Expansion of Dry Hydrated Lime by the Le Chatelier Method, Soundness of Cement Paste by the Le Chatelier Method, Soundness

Comprising a split cylinder fitted with two indicator stems. The mould is supplied complete with two glass plates and a weight 100 g  $\pm$ 10 g. Three moulds required for each test.

## Standards

BS 6463, EN 196-3, EN 459-2

## Further Information

**\*\*NOT AVAILABLE FOR SALE IN THE USA\*\***

## Accessories



### Extensibility of Mould Apparatus BS

Code: 38-3200



### Extensibility of Mould Apparatus EN

Code: 38-3205



## Le Chatelier Water Bath

Code: 38-3420/01



## Tamping Rod

Code: [38-3300](#)



## Trowel - Gauging

Code: [81-0335](#)



## Le Chatelier Water Bath

Code: [38-3420/01](#)

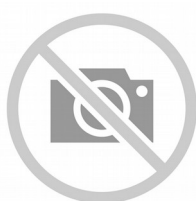
Product Group: [Soundness of Cement Paste by the Le Chatelier Method, Soundness](#)

Manufactured from corrosion resistant material, complete with a removable rack to hold up to twelve moulds and timer unit.

## Further Information

**\*\*NOT AVAILABLE FOR SALE IN THE USA\*\***

## Accessories



### Extensibility of Mould Apparatus BS

Code: [38-3200](#)



### Tamping Rod

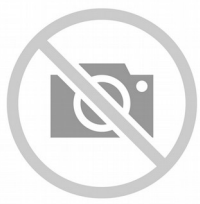
Code: [38-3300](#)



### Trowel - Gauging

Code: [81-0335](#)

## Alternatives



## Extensibility of Mould Apparatus BS

Code: [38-3200](#)



## Tamping Rod

Code: [38-3300](#)



## Trowel - Gauging

Code: [81-0335](#)



## Automatic/Manual 5 litre nominal capacity Mortar Mixer

Code: 39-0035/01

Product Group: Automatic/Manual 5 Litre Nominal Capacity Mortar Mixer

- New Microprocessor control
- New mix program selector
- Complies with latest EN Standards update
- Choice of automatic mixing cycles
- Sand and water dispenser supplied as standard

This mixer is designed to mix mortars and cement pastes to the requirements of the above Standards. The mixing paddle has a planetary motion and is driven by a motor with a microprocessor based speed and program controller. The mixer can be operated either in an automatic or manual mode. When the mixer is used in the manual mode, the two mixing speeds can be changed by means of a rocker switch, without switching off the motor. In the automatic mode any one of the preset mixing programs may be selected.

## Standards

EN 196-1, EN 196-3, EN 413-2, EN 459-2, EN 1744-1, EN 13279-2, EN 1015-2, EN 13395-1, EN 13454-2, ISO 679, BS 3892-1, BS 3892-3, BS 6463-103, BS 4551-1

## Further Information

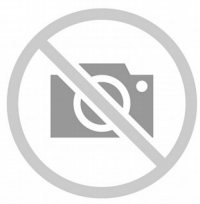
**\*\*NOT AVAILABLE FOR SALE IN THE USA\*\***

Complete with bowl and paddle, sand and Water dispensers. For 220 - 240 V AC, 50 - 60 Hz, 1 ph.

## Specification

Dimensions (l x w x h)	530 x 350 x 580 mm
Speeds (rpm) Low, High	Paddle: 140 ± 5, 285 ± 10 Mixing Head: 62 ± 5, 125 ± 10
Rated Power	180 W
Bowl Capacity	5 litres approx.
Weight	54 kg

## Accessories



## Bowl Cover

Code: [39-0060](#)



## Scraper

Code: [39-0065](#)

## Spares/Consumables



## Bowl

Code: [39-0031/11](#)



## Paddle

Code: [39-0031/10](#)



## Jolting Table 220 - 240 V 50 Hz

Code: [39-1150/01](#)

Product Group: [Jolting Table](#)

Supplied without moulds.

## Standards

EN 196-1, EN 413-2, EN 459-2, EN 1744-1, EN 1015-10, EN 1015-11, EN 13454-2, ISO 679, BS 3892-1, BS 4551-1

## Further Information

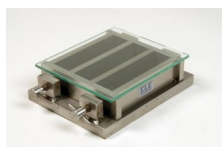
**\*\*NOT AVAILABLE FOR SALE IN THE USA\*\***

## Accessories



### Feeding Hopper

Code: [39-1120](#)



### Three-gang Mould

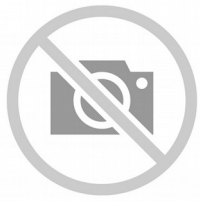
Code: [39-1100](#)

## Spares/Consumables



### Mortar Sand

Code: [39-1170](#)



## Scraper

Code: [39-1130](#)

---

## Alternatives



## Jolting Table 220 - 240 V AC 60 Hz

Code: [39-1150/06](#)





## Humidity Cabinet BS EN 150 Litre Capacity 50Hz

Code: [SP39-1400/01](#)

Product Group: [Humidity Cabinet BS EN](#)

- Micro-processor controller for temperature and humidity for precise and reliable control
- Stainless Steel interior with adjustable shelves
- CFC-free polyurethane insulation to provide efficient thermal stability
- 12mm access port

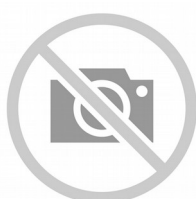
Prior to testing, EN 196 requires prisms to be cured for a period of at least 24 hours at 20 ±1°C, 90 % RH minimum. The prisms are then de-moulded and stored under water for the required curing time, usually 48 hours, 72 hours, 7 and 28 days.

The Humidity Cabinet is built to a high specification and is designed for the early curing of mortar prisms prior to storing under water. Relative humidity up to 98%.

### Specification

Temperature Range	+5 °C to 60 °C
Temperature Control	0.2 °C at 20°C
Temperature Variation	± 0.5 °C at 20°C
Humidity Range	0 1/2 - 98%
External Dimensions (mm)	1075 × 635 × 660
Internal Dimensions (mm)	590 × 510 × 490
Shelves	4 Holds 6 x 39-1100 moulds
Shelf Capacity	15 kg
Input Power	800 Watt
Weight	195 kg

### Spares/Consumables



## Replacement Circular Charts

Code: [39-1300/10](#)

### Alternatives



## Humidity Cabinet BS EN 150 Litre Capacity 60Hz

Code: [SP39-1400/06](#)



## Humidity Cabinet to En196 320 Litre Capacity

Code: [39-1300/01](#)



## Humidity Cabinet to En196 320 Litre Capacity

Code: [39-1300/06](#)



## ADR-Auto V2.0 250/25 Cement Machine C/W Compression and Flexural Jigs and Platen Sets

Code: 39-6160/01

Product Group: [ADR-Auto V2.0 250/25 Compression Machine, Activity Index](#)

- 250 kN maximum capacity
- Calibration accuracy to BS EN ISO 7500-1; ASTM E4
- Automatic loading cycle
- 25 kN low capacity frame supplied as standard
- Tests a wide variety of specimen sizes
- Tests mortar, lime, cement and Fly Ash
- Complete with compression/flexural jigs and platen sets
- Supplied with Windows(R) download software as standard

The ADR-Auto 250/25 Machine provides consistent automatic testing of a wide range of specimens. The machine comprises a standard ELE 250/25 kN load frame and ADR-Auto console and incorporates all the features included in the ADR-Auto series concrete testing machines.

As standard the machine is supplied with platens fitted to the load frame, compression jig with 40 mm and 50mm/2 inch square platen sets and flexural jig for testing 40.1 x 40 x 160 mm prisms.

The availability of the 25 kN low capacity load frame as standard extends the test capability of the machine for low strength compression or flexural testing. The automatic loading cycle is controlled by a closed loop microprocessor hydraulic system incorporated with the display in the ADR-Auto console attached to the load frame. A serial output port is built into the system, enabling test data to be stored in memory (up to 500 test results) for subsequent downloading to PC or suitable printer.

## Standards

EN 196-1, EN 459-2, EN 1744, EN 1015-11, EN 13454-2, BS 3892-1, BS 4551-1, ASTM C109

## Further Information

**\*\*NOT AVAILABLE FOR SALE IN THE USA\*\***

For 220 - 240 V AC, 50 Hz, 1 ph.

## Accessories



### Flexural Jig Assembly

Code: [39-6160](#)



### Printer

Code: [39-4859/01](#)



### Set of Distance Pieces

Code: [39-6220](#)

## Alternatives



### ADR-Auto V2.0 250/25 Cement Machine C/W Compression and Flexural Jigs and Platen Sets

Code: [39-6160/06](#)



## ELE Sieve Shaker

Code: [80-0200/01](#)

Product Group: [ELE Sieve Shaker](#)

The ELE sieve shaker is powered by an electromagnetic drive that has no rotating parts to wear making it maintenance free and extremely quiet in operation.

The unit features a triple Vertical-Lateral-Rotary vibrating action that moves the sample over the sieve producing faster more efficient sieving, while the rapid vertical movements also help keep the apertures from blinding.

The shaker is ideal for laboratory or on site use. It is robust, compact and sufficiently lightweight to be portable. The separate digital microprocessor controlled console unit incorporates a keypad for setting the sieving program and is isolated from any effects of vibration from the shaker.

As standard the shaker includes, timer 0-999 minutes, adjustable vibration intensity and adjustable intermittent or continuous operation.

## Further Information

**\*\*NOT AVAILABLE FOR SALE IN THE USA\*\***

The unit accepts up to ten 200 mm or 8 inch, full height, diameter sieves and lid and receiver, or up to six 300 mm or 12 inch diameter sieves and lid and receiver. Complete as specified. Dimensions (l x w x h) 380 x 440 x 1085 mm. For 220 - 240 V AC, 50 Hz 1ph.



## 50 Litre Drying Oven

Code: [78-1215/01](#)

Product Group: [Oven Drying Method](#), [Oven Drying Method](#), [Oven Drying Method](#)

## Standards

BS 2648, BS 598, BS 1377, BS 1924

## Further Information

**\*\*NOT AVAILABLE FOR SALE IN THE USA\*\***

## Alternatives



## 100 Litre Drying Oven

Code: [78-1225/01](#)



## 150 Litre Drying Oven

Code: [78-1235/01](#)



## 225 Litre Drying Oven

Code: [78-1250/01](#)



## 425 Litre Drying Oven

Code: [78-0135/01](#)





## Muffle Furnace

Code: [83-4170/01](#)

Product Group: [Furnaces](#), [Loss-on-Ignition](#),  
[Loss-on-Ignition](#)

## Standards

EN 196-2, EN 459-2, EN 13454-2, BS 1016-4, ISO 344, ISO 1171, ASTM D2361, ASTM D2795, ASTM D3714

## Specification

External Dimensions (l x w x h)	545 x 385 x 400 mm
Work chamber dimensions (l x w x h)	300 x 200 x 120 mm
Internal volume	6.9 litres
Maximum temperature	1200 °C
Electrical supply	220 – 240 V AC, 50 - 60 Hz, 1 ph
Power supply	3500 W
Weight	130 kg

## Spares/Consumables



### Controller, for use in 83-4170/01

Code: [83-4170/11](#)





## Element heating for use in 83-4170

Code: [83-4170/14](#)



## Element/Chamber complete, heating, for use in 83-4170/01

Code: [83-4170/12](#)



## Refractory brick for 83-4170/01

Code: [83-4170/13](#)



## Thermostat, KGrade, 370 long, dia 2.5, for 83-4170/01

Code: [83-4170/10](#)

## Alternatives



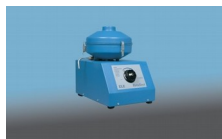
## Heat of Hydration Apparatus

Code: [38-4600/01](#)



## Heat of Hydration Apparatus

Code: [38-4600/06](#)



## Rotatest 1500

Code: [45-3810/01](#)



## Rotatest 3000

Code: [45-3815/01](#)



## Autoclave

Code: [38-3800/01](#)

Product Group: [Soundness of Portland Cement by the Autoclave Method](#)

The autoclave provides high pressure steam curing of the specimens and is supplied with a safety valve pressure gauge and controlled heater unit. The pressure vessel is independently certified and certificated. A specimen rack with capacity for 12 specimens included. The unit conforms to the requirements of ASTM C151.

220-240 V 50/60 Hz 1ph

## Standards

ASTM C151

## Further Information

**\*\*NOT AVAILABLE FOR SALE IN THE USA\*\***

## Spares/Consumables



### Lid Sealing Gasket

Code: [38-3800/13](#)



## Air Entrainment Meter

Code: [38-7087](#)

Product Group: [Air Content of Mortar, Masonry  
Cement and Lime by the Pressure Method](#)

0.75 litre capacity, complete with integral pump.

## Standards

EN 413-2, BS 459-2

## Further Information

**\*\*NOT AVAILABLE FOR SALE IN THE USA\*\***



## Spray Nozzle Apparatus

Code: [38-7600](#)

Product Group: [Fineness of Fly Ash \(Wet Sieving\)](#)

Comprising a spray nozzle 17.5 mm ID with 17 holes as specified in EN451, a vacuum pressure gauge, 160 kPa graduated at 5 kPa divisions and fittings to attach the apparatus to a standard domestic water supply. Supplied without sieve.

## Standards

BS 3892-1, EN 451-2, ASTM C430

## Further Information

**\*\*NOT AVAILABLE FOR SALE IN THE USA\*\***

## Accessories



### 45 µm Sieve

Code: [38-7600/12](#)



## Flow Table

Code: [38-6000](#)

Product Group: [Flow and Workability of Mortar Lime](#)

Manufactured from cast bronze as specified in BS and ASTM C230. Complete with Tripod and Baseplate.

## Standards

BS 4551-1, BS 3892-1, ASTM C230

## Further Information

**\*\*NOT AVAILABLE FOR SALE IN THE USA\*\***

## Accessories



### ASTM Calipers

Code: [38-6080](#)



### Flow Mould

Code: [38-6040](#)



### Motorising Unit

Code: [38-6100/01](#)



## Plastic Tamper

Code: 38-6160