



IF IT'S WORTH BUILDING, IT'S WORTH TESTING

Contents

www.ele.com
+44 (0) 01525 249 200



This wishlist was generated on 18/01/2017, and contains the following Products:

23-3505

Mortar and Pestle Porcelain.

23-3500

Rubber Headed Pestle.

23-5802

1.4" and 2.8" Hand Specimen Trimmer

81-0710

Trimming Knife

23-4090

38mm Hand Operated Hydraulic Sample Extruder with Trimming Knife 38mm Split Former & Cutting Tool.

78-1225/01

100 Litre Drying Oven

24-0430

Glass Plate.

24-0811

Rod Comparator

81-0140

Spatula 200 mm

24-0434

Liquid Limit Device ASTM/ Aashto Hand-Operated W/ Revolution Counter. Supplied Less Grooving Tool.

24-0453

ASTM Metal Grooving Tool.

24-1500

Prong Plate.

24-1600

Glass Cup.

82-0380

Measuring Cylinder - Glass 100 ml

24-1550

Shrinkage Dish.

82-2000

Evaporating Dish - 150 x 45 mm

24-2890

Density Bottle 25ML.

24-2885

Pyknometer Complete with Non-Corrodable Cone and Rubber Seal 1Kg Capacity

79-5660

8in Dia ASTM Sieve 75.0mm Stainless Steel Mesh.

79-5580

8in Dia ASTM Sieve 25.0mm Stainless Steel Mesh.

79-5560

8in Dia ASTM Sieve 19.0mm Stainless Steel Mesh.

79-5020

8in Dia ASTM Sieve 4.75mm Stainless Steel Mesh.

79-5070

8in Dia ASTM Sieve 2.0mm Stainless Steel Mesh.

79-5160

8in Dia ASTM Sieve 425 Mic Stainless Steel Mesh.

79-5260

8in Dia ASTM Sieve 75 Mic Stainless Steel Mesh.

79-5400

8 Inch Dia Lid.

79-5410

8in Dia Receiver.

80-0200/06

ELE Sieve Shaker

24-9060

Proctor Mould

24-9063

ASTM Compaction Rammer 2.5Kg.

24-9010

Straight Edge 300mm.

24-9066

ASTM Compaction Mould 152mm.

24-9070

ASTM/Modified Proctor Compaction Rammer 4.5Kg.

24-9095/06

Automatic Soils Compactor ASTM 220-240V 60Hz 1Ph.

25-3518/01

Digital Tritest 50 Load Frame

25-3518/10

Adaptor kit, to perform CBR on the Tritest 50 load frame

24-9150/06

Cbr-Test 50 Machine 50kN Capacity BS and ASTM Supplied with Stabilising Bar.

24-9182

Penetration Piston

24-9188

Bracket and Adaptor. Dual Purpose Mounting Bracket for CBR Penetration Gauges EL24-9184/EL24-9186

24-9184

Penetration/Swell Dial Gauge ASTM.

24-9186

Penetration Dial Gauge BS

27-1559

50kN S-type Load Cell

78-0460

Clamped Boss Load Ring - 10.0 kN

78-0760

Clamped Boss Load Ring - 28.0 kN

78-0860

50kN Clamped Boss Load Ring

24-9228

ASTM Cbr Mould Complete with Collar & Perforated Base

24-9238

ASTM Spacing Disc.

24-9240

Filter Screen 150mm Dia with 0.15mm Mesh.

24-9243

4.5Kg Annular Surcharge Weight ASTM.

24-9236

ASTM Cutting Collar.



Mortar and Pestle Porcelain.

Code: [23-3505](#)

Product Group: [Sample Reduction](#)

Thick walled porcelain mortar; 107mm internal diameter and porcelain pestle.

Alternatives



Heat of Hydration Apparatus

Code: [38-4600/06](#)



Heat of Hydration Apparatus

Code: [38-4600/01](#)



Rubber Headed Pestle.

Code: [23-3500](#)



Rubber Headed Pestle.

Code: [23-3500](#)

Product Group: [Sample Reduction](#)

Specially made for gently grinding soils without breaking the individual particles. Suitable for BS 1377, 1924; ASTM D421; AASHTO T87.

Standards

BS 1377, BS 1924, ASTM D421, AASHTO T87

Alternatives



Mortar and Pestle Porcelain.

Code: [23-3505](#)



1.4" and 2.8" Hand Specimen Trimmer

Code: [23-5802](#)

Product Group: [Soil Lathes, Soil Trimmers \(Lathes\)](#)

Specimen Trimmers are designed to simplify precision trimming of soil samples for triaxial, shear, unconfined compression, and other tests requiring standard cylindrical specimens. This trimming frame is supplied complete with vane type grips for both 1.4" (35 mm) and 2.8" (70 mm) diameter specimens, and a narrow wire saw.

Further Information

- Lightweight frame construction for both laboratory and field use.
- Sturdy plated steel uprights serve as guides for wire saw during final trimming procedure.
- Samples are held securely during trimming through vane type grips.
- Adjustable upper gripper platen for various sample heights.
- Plated steel uprights and gripper assemblies for rust resistance and long life.

Includes Wire Saw.

Specification

Sample Size.	Trims samples to either 1.4" (35 mm) or 2.8" (70 mm) diam.
Uprights.	Positioned to guide wire saw to control final sample diam; plated steel.
Sample Grips.	Vane type; hold sample during trimming; plated steel.
Overall Dimensions.	7" w. x 5" d. x 14" h. (178 x 127 x 356 mm).
Weight.	Net 16 lbs. (7.3 kg).

Accessories



Trimming Knife

Code: [81-0710](#)

Alternatives



Hand Operated Soil Lathe for 38mm Dia Specimens Up to 100mm Long.

Code: 23-5800



Trimming Knife

Code: [81-0710](#)

Product Group: [Soil Lathes](#), [Miscellaneous Laboratory Hardware](#), [Soil Trimmers \(Lathes\)](#)

Further Information

****NOT AVAILABLE FOR SALE IN THE USA****



38mm Hand Operated Hydraulic Sample Extruder with Trimming Knife 38mm Split Former & Cutting Tool.

Code: [23-4090](#)

Product Group: [Soil Extruders](#)

This Sample Extruder comprises a vertically mounted lever action hydraulic jack, with the body extended to form a chamber which accommodates a 38 mm diameter sample tube. Supplied complete with trimming knife, 38 mm split former and wire saw.

Standards

BS 1377-1

Alternatives



Cbr/Core Cutter Extruder Frame and Hydraulic Jack Extrudes 150mm/6 Inch Diameter Specimens.

Code: [23-4250](#)



Proctor/Core Cutter Extruder Frame and Hydraulic Jack. Extrudes 100mm/4 Inch Diameter Specimens

Code: [23-4200](#)



100 Litre Drying Oven

Code: [78-1225/01](#)

Product Group: [Oven Drying Method](#), [Oven Drying Method](#), [Oven Drying Method](#)

Standards

BS 2648, BS 598, BS 1377, BS 1924

Further Information

****NOT AVAILABLE FOR SALE IN THE USA****

Alternatives



150 Litre Drying Oven

Code: [78-1235/01](#)



225 Litre Drying Oven

Code: [78-1250/01](#)



425 Litre Drying Oven

Code: [78-0135/01](#)



50 Litre Drying Oven

Code: [78-1215/01](#)



Glass Plate.

Code: [24-0430](#)

Product Group: [Casagrande Method, Determination of Plastic Limit](#)

500 mm square x 10 mm thick.

Standards

BS 1377-2



Rod Comparator

Code: [24-0811](#)

Product Group: [Rod Comparator, Determination of Plastic Limit](#)

3mm diameter rod comparator to BS1377.

Standards

BS 1924-2, EN 1997-2, ASTM D4318, BS 1377, AASHTO T90



Spatula 200 mm

Code: [81-0140](#)

Product Group: [Determination of Plastic Limit, Spatulas](#)

Further Information

****NOT AVAILABLE FOR SALE IN THE USA****

Accessories



Vibrating Hammer

Code: [47-0455/01](#)

Alternatives



Vibrating Hammer

Code: [47-0455/01](#)



Liquid Limit Device ASTM/ Aashto Hand-Operated W/ Revolution Counter. Supplied Less Grooving Tool.

Code: [24-0434](#)

Product Group: [Casagrande Method](#)

Complete with revolution counter. Supplied less grooving tool.

Standards

ASTM D4318, AASHTO T89

Accessories



ASTM Metal Grooving Tool.

Code: [24-0453](#)



Casagrande Grooving Tool Aashto

Code: [24-0461](#)



ASTM Metal Grooving Tool.

Code: [24-0453](#)

Product Group: [Casagrande Method](#)

Standards

ASTM D4318



Prong Plate.

Code: [24-1500](#)

Product Group: [Shrinkage Prong Plate, Volumetric Shrinkage](#)

Made of acrylic plastic fitted with three prongs, nominal 76 mm square and 2.4 mm thick.

Standards

BS 1377, ASTM D427, AASHTO T92

Specification

Construction	Acrylic plastic with 3 metal prongs.
Dimensions	3" square x 1/8" thick (76 x 3.2 mm).
Weight	Net 1 oz. (28 g).

Accessories



Evaporating Dish - 150 x 45 mm

Code: [82-2000](#)



Measuring Cylinder - Glass 100 ml

Code: [82-0380](#)

Alternatives



Glass Cup.

Code: [24-1600](#)



Shrinkage Dish.

Code: [24-1550](#)



Glass Cup.

Code: [24-1600](#)

Product Group: [Shrinkage Prong Plate, Volumetric Shrinkage](#)

Nominal 70 mm diameter x 50 mm deep.

Standards

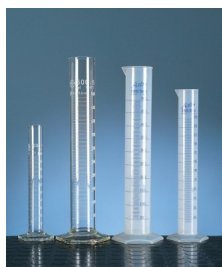
ASTM D427, AASHTO T92

Accessories



Evaporating Dish - 100 x 40 mm

Code: [82-1970](#)



Measuring Cylinder - Glass 100 ml

Code: [82-0380](#)

Alternatives



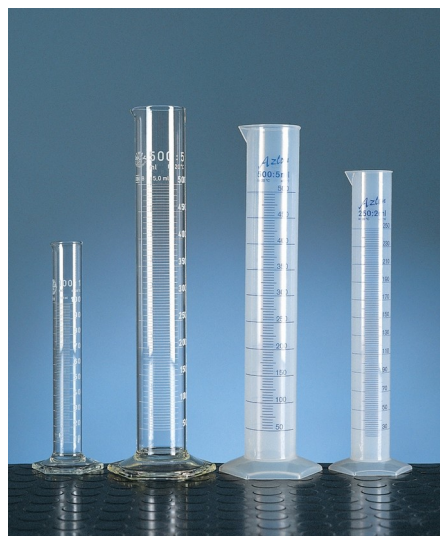
Prong Plate.

Code: [24-1500](#)



Shrinkage Dish.

Code: [24-1550](#)



Measuring Cylinder - Glass 100 ml

Code: [82-0380](#)

Product Group: [Volumetric Shrinkage, Measuring Cylinders, BS](#)

Soda glass, spouted, BS EN 4788.

Further Information

****NOT AVAILABLE FOR SALE IN THE USA****



Shrinkage Dish.

Code: [24-1550](#)

Product Group: [Shrinkage Prong Plate, Volumetric Shrinkage](#)

Nominal 42 mm diameter x 12 mm deep.

Standards

ASTM D427, AASHTO T92

Accessories



Evaporating Dish - 150 x 45 mm

Code: [82-2000](#)



Measuring Cylinder - Glass 100 ml

Code: [82-0380](#)

Alternatives



Glass Cup.

Code: [24-1600](#)



Prong Plate.

Code: [24-1500](#)



Evaporating Dish - 150 x 45 mm

Code: [82-2000](#)

Product Group: [Volumetric Shrinkage, Evaporating Dishes](#)

Shallow form with spout, porcelain 150 x 45 mm nominal diameter x height.

Further Information

****NOT AVAILABLE FOR SALE IN THE USA****



Density Bottle 25ml.

Code: [24-2890](#)

Product Group: [Particle Density: Pyknometer Methods](#)

Supplied complete with capillary vent stopper.
Conforms to BS 733 and ISO 3507. Gay-Lussac type.

Standards

BS 1377, BS 812-2, EN 1097-7, ASTM D854, AASHTO T100

Accessories



100ml Density Bottle with Perforated Stopper.

Code: [24-2950](#)



50ml Density Bottle with Perforated Stopper.

Code: [24-2900](#)

Alternatives



100ml Density Bottle with Perforated Stopper.

Code: [24-2950](#)



50ml Density Bottle with Perforated Stopper.

Code: [24-2900](#)



Pyknometer Complete with Non-Corrodable Cone and Rubber Seal 1Kg Capacity

Code: [24-2885](#)

Product Group: [Particle Density: Pyknometer
Methods, Pycnometer Top and Jar](#)

Glass jar complete with noncorrodible cone.

Standards

BS 1377, BS 812-2, EN 1097-7, EN 1997-2, ASTM D854, AASHTO T100, ASTM C128, AASHTO T84

Accessories



100MI Density Bottle with Perforated Stopper.

Code: [24-2950](#)



50MI Density Bottle with Perforated Stopper.

Code: [24-2900](#)



Density Bottle 25ML.

Code: [24-2890](#)



Pyknometer Gasket

Code: [24-2885/11](#)



Pyknometer Jar Only

Code: [24-2885/10](#)



Pyknometer Top

Code: [24-2885/12](#)

Alternatives



Sand Absorption Cone.

Code: [42-1700](#)



8in Dia ASTM Sieve 75.0mm Stainless Steel Mesh.

Code: 79-5660

Product Group: U.S. Standard Testing Sieves, 8"
Diameter ASTM Sieves, 8" Diameter ASTM Sieves, 8"
Diameter ASTM Sieves

Standards

ASTM E11

Specification

Frames	Full height; 2 1/4" (51 mm) depth to mesh.
Construction	Polished and lacquered brass with S.S. mesh.
Nameplates	Show standard, alternate and Tyler Screen Scale equivalent designations.
Weights	Net 1 lb. (453 g).
Sieve Size or Number	3"
Sieve Opening Standard	75 mm
Sieve Opening Alternative (in.)	3



8in Dia ASTM Sieve 25.0mm Stainless Steel Mesh.

Code: 79-5580
Product Group: U.S. Standard Testing Sieves, 8" Diameter ASTM Sieves, 8" Diameter ASTM Sieves, 8" Diameter ASTM Sieves

Standards
ASTM E11

Specification

Frames	Full height; 2 1/4" (51 mm) depth to mesh.
Construction	Polished and lacquered brass with S.S. mesh.
Nameplates	Show standard, alternate and Tyler Screen Scale equivalent designations.
Weights	Net 1 lb. (453 g).
Sieve Size or Number	1"
Sieve Opening Standard	25.0 mm
Sieve Opening Alternative (in.)	1



8in Dia ASTM Sieve 19.0mm Stainless Steel Mesh.

Code: 79-5560

Product Group: U.S. Standard Testing Sieves, 8"
Diameter ASTM Sieves, 8" Diameter ASTM Sieves, 8"
Diameter ASTM Sieves

Standards

ASTM E11

Specification

Frames	Full height; 2 1/4" (51 mm) depth to mesh.
Construction	Polished and lacquered brass with S.S. mesh.
Nameplates	Show standard, alternate and Tyler Screen Scale equivalent designations.
Weights	Net 1 lb. (453 g).
Sieve Size or Number	3/4"
Sieve Opening Standard	19.0 mm
Sieve Opening Alternative (in.)	0.75



8in Dia ASTM Sieve 4.75mm Stainless Steel Mesh.

Code: 79-5020

Product Group: U.S. Standard Testing Sieves, 8"
Diameter ASTM Sieves, 8" Diameter ASTM Sieves, 8"
Diameter ASTM Sieves

Standards

ASTM E11

Specification

Frames	Full height; 2 1/4" (51 mm) depth to mesh.
Construction	Polished and lacquered brass with S.S. mesh.
Nameplates	Show standard, alternate and Tyler Screen Scale equivalent designations.
Weights	Net 1 lb. (453 g).
Sieve Size or Number	No. 4
Sieve Opening Standard	4.75 mm
Sieve Opening Alternative (in.)	0.187



8in Dia ASTM Sieve 2.0mm Stainless Steel Mesh.

Code: 79-5070

Product Group: U.S. Standard Testing Sieves, 8"
Diameter ASTM Sieves, 8" Diameter ASTM Sieves, 8"
Diameter ASTM Sieves

Standards

ASTM E11

Specification

Frames	Full height; 2 1/4" (51 mm) depth to mesh.
Construction	Polished and lacquered brass with S.S. mesh.
Nameplates	Show standard, alternate and Tyler Screen Scale equivalent designations.
Weights	Net 1 lb. (453 g).
Sieve Size or Number	No. 10
Sieve Opening Standard	2.00 mm
Sieve Opening Alternative (in.)	0.0787



8in Dia ASTM Sieve 425 Mic Stainless Steel Mesh.

Code: 79-5160

Product Group: U.S. Standard Testing Sieves, 8"
Diameter ASTM Sieves, 8" Diameter ASTM Sieves, 8"
Diameter ASTM Sieves

Standards

ASTM E11

Specification

Frames	Full height; 2 1/4" (51 mm) depth to mesh.
Construction	Polished and lacquered brass with S.S. mesh.
Nameplates	Show standard, alternate and Tyler Screen Scale equivalent designations.
Weights	Net 1 lb. (453 g).
Sieve Size or Number	No. 40
Sieve Opening Standard	425 um
Sieve Opening Alternative (in.)	0.0165



8in Dia ASTM Sieve 75 Mic Stainless Steel Mesh.

Code: 79-5260

Product Group: U.S. Standard Testing Sieves, 8"
Diameter ASTM Sieves, 8" Diameter ASTM Sieves, 8"
Diameter ASTM Sieves

Standards

ASTM E11

Specification

Frames	Full height; 2 1/4" (51 mm) depth to mesh.
Construction	Polished and lacquered brass with S.S. mesh.
Nameplates	Show standard, alternate and Tyler Screen Scale equivalent designations.
Weights	Net 1 lb. (453 g).
Sieve Size or Number	No. 200
Sieve Opening Standard	75 um
Sieve Opening Alternative (in.)	0.0029



8 Inch Dia Lid.

Code: 79-5400

Product Group: U.S. Standard Testing Sieves, Sieve Lids and Receivers ASTM, 8" Diameter ASTM Sieves, 8" Diameter ASTM Sieves, 8" Diameter ASTM Sieves

Standards

ASTM E11



8in Dia Receiver.

Code: 79-5410

Product Group: U.S. Standard Testing Sieves, Sieve Lids and Receivers ASTM, 8" Diameter ASTM Sieves, 8" Diameter ASTM Sieves, 8" Diameter ASTM Sieves

Standards

ASTM E11



ELE Sieve Shaker

Code: [80-0200/06](#)

Product Group: [ELE Sieve Shaker](#)

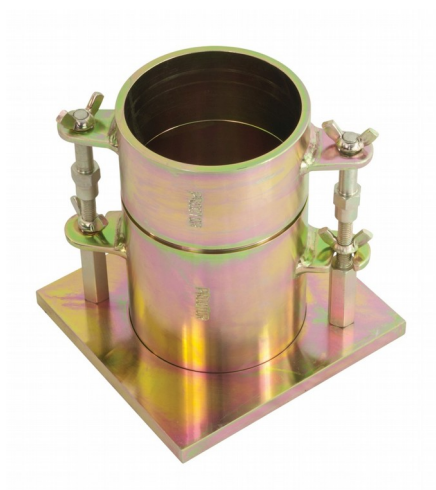
The ELE sieve shaker is powered by an electromagnetic drive that has no rotating parts to wear making it maintenance free and extremely quiet in operation.

The unit features a triple Vertical-Lateral-Rotary vibrating action that moves the sample over the sieve producing faster more efficient sieving, while the rapid vertical movements also help keep the apertures from blinding.

The shaker is ideal for laboratory or on site use. It is robust, compact and sufficiently lightweight to be portable. The separate digital microprocessor controlled console unit incorporates a keypad for setting the sieving program and is isolated from any effects of vibration from the shaker.

As standard the shaker includes, timer 0-999 minutes, adjustable vibration intensity and adjustable intermittent or continuous operation.

The unit accepts up to ten 200 mm or 8 inch, full height, diameter sieves and lid and receiver, or up to six 300 mm or 12 inch diameter sieves and lid and receiver. Complete as specified. Dimensions (l x w x h) 380 x 440 x 1085 mm. For 220 - 240 V AC, 60 Hz 1ph.



Proctor Mould

Code: 24-9060

Product Group: Accessories for ASTM and Proctor compaction, Proctor compaction

Standards

ASTM D558, ASTM D559, ASTM D560, ASTM D698, ASTM D1557, AASHTO T99, AASHTO T134, AASHTO T135, AASHTO T136, AASHTO T180

Specification

Dimensions	101.6 mm dia x 116.4 mm high
Rammer Mould Volume	1/30 ft ³
Construction	All steel, threaded studs with wing nuts, plated.
Weight	5.4 kg



ASTM Compaction Rammer 2.5Kg.

Code: [24-9063](#)

Product Group: [Proctor compaction](#), [Standard Compaction Hammer](#)

50.8mm diameter x 305mm deep.

Standards

ASTM D1557, AASHTO T180, ASTM D558, ASTM D559, ASTM D560, ASTM D698, AASHTO T99, AASHTO T134, AASHTO T135, AASHTO T136

Specification

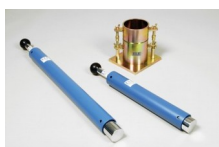
Hammer	2" diam. (50.8 mm); 5-1/2 lbs. (2.49 kg).
Drop	12 " (305 mm).
Guide Sleeve	Machined steel tubing with air pressure release holes
Finish	Corrosion resistant
Weight	4.1 kg (9 lbs)

Accessories



ASTM/Modified Proctor Compaction Rammer 4.5Kg.

Code: [24-9070](#)



Straight Edge 300mm.

Code: [24-9010](#)

Alternatives



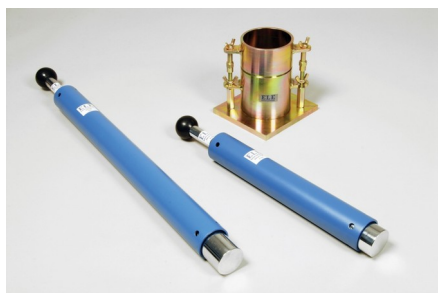
ASTM/Modified Proctor Compaction Rammer 4.5Kg.

Code: [24-9070](#)



Straight Edge 300mm.

Code: [24-9010](#)



Straight Edge 300mm.

Code: [24-9010](#)

Product Group: [BS/EN compaction test 4.5kg, Proctor compaction, Straightedge](#)

300 mm

Standards

BS 1377-4, BS 1924-2, ASTM D698, ASTM D1557, AASHTO T99, EN 13286-2, EN 13286-4, ASTM D1883, AASHTO T193, ASTM D558, ASTM D559, ASTM D560, AASHTO T134, AASHTO T135, AASHTO T136, AASHTO T180

Specification

Construction	Flat ground tool steel; beveled edge.
Dimensions	L x W x T (300mm x 40mm x 6mm).
Weight	550g

Accessories



ASTM Compaction Rammer 2.5Kg.

Code: [24-9063](#)

Alternatives



ASTM Compaction Rammer 2.5Kg.

Code: [24-9063](#)



ASTM Compaction Mould 152mm.

Code: 24-9066

Product Group: Accessories for ASTM and Proctor compaction, ASTM/Modified Proctor compaction

152mm inside diameter

Standards

ASTM D698, ASTM D1557, AASHTO T99, AASHTO T180

Specification

Dimensions	152.4 mm dia x 116.4 mm high
Rammer Mould Volume	1/13.33 ft ³
Construction	All steel, threaded studs with wing nuts, plated.
Weight	8.2 kg



ASTM/Modified Proctor Compaction Rammer 4.5Kg.

Code: [24-9070](#)

Product Group: [ASTM/Modified Proctor compaction, Modified Compaction Hammer](#)

50.8mm diameter x 457.2 mm drop.

Standards

ASTM D1557, AASHTO T180

Specification

Hammer	2" diam. (50.8 mm); 10 lbs. (4.5 kg).
Drop	18" (457.2 mm).
Guide Sleeve	Machined steel tubing with integrally spun end cap; air pressure release holes.
Finish	Corrosion resistant
Weight	Net 6.3 kg (14 lbs)

Accessories



ASTM Compaction Rammer 2.5Kg.

Code: [24-9063](#)

Alternatives



ASTM Compaction Rammer 2.5Kg.

Code: [24-9063](#)



Automatic Soils Compactor ASTM 220-240V 60Hz 1Ph.

Code: [24-9095/06](#)

Product Group: [Automatic Compactors](#)

Standards

ASTM D558, ASTM D559, ASTM D560, ASTM D698, ASTM D1557, AASHTO T99, AASHTO T134, AASHTO T135, AASHTO T136, AASHTO T180

Accessories



ASTM Compaction Mould 152mm.

Code: [24-9066](#)



Proctor Mould

Code: [24-9060](#)

Alternatives



Automatic Soil Compactor ASTM 110-120V 60Hz 1Ph

Code: [24-9095/02](#)



Automatic Soils Compactor ASTM 220-240V 50Hz 1Ph.

Code: [24-9095/01](#)



Digital Tritest 50 Load Frame

Code: [25-3518/01](#)

Product Group: [Digital Tritest 50 Load Frame](#), [CBR Load Frames](#), [Triaxial Load Frames](#)

- Microprocessor control
- Large on-board LED screen display
- Direct entry via a touch sensitive keyboard
- Rapid approach and return to datum of platen
- Fully variable speed, 0.00001 to 9.99999 mm/min
- Samples up to 100 mm diameter

This 50 kN capacity machine, designed primarily for triaxial testing of soil specimens up to 100 mm diameter x 200 mm long, comprises a rigid twin column construction with an integral fully variable microprocessor controlled drive unit and LCD display with a touch sensitive keyboard. The machine is normally bench mounted for ease of installation and operation.

The use of a microprocessor controlled drive system and keyboard entry provides the Digital Tritest 50 with a wide variety of features which include pause and speed reset during test, RS 232C, operator programming of speed and control functions, self test diagnostics and many other features.

A robustly constructed steel case houses the motor drive system with careful attention being given to the prevention of ingress of water or grit. All operating controls are mounted on the front panel of the machine, which is angled and recessed to prevent physical and environmental damage.

Standards

BS 1377-7, BS 1377-8, BS 1924-2, ASTM D1883, ASTM D2166, ASTM D2850, ASTM D4767, ASTM D7181, AASHTO T99, AASHTO T134, AASHTO T135, AASHTO T136, AASHTO T180, AASHTO T193, AASHTO T208, AASHTO T296, AASHTO T297

Further Information

Complete with RS 232C interface.

Specification

Capacity	50kN (11,200 lbf).
Speed Range	English mode: 0.000001 to 0.399999 in/min. Metric mode: 0.00001 to 9.99999 mm/min.
Rapid Approach Speed	1.0 in/min. (25 mm/min.).

Product Sheet

www.ele.com
+44 (0) 01525 249 200



Platen Travel	100mm (3.9"); limit switch protection.
Platen Diameter	133 mm (5.2")
Vertical Clearance	910 mm, (36 .8") maximum; 305mm, (12") minimum.
Horizontal Clearance	364mm, (15 .3").
Serial Interface	RS232C; programmable baud rate and protocol.
Overall Dimensions	500 x 500 x 1,470 mm, (19.7" w. x 19.7" d. x 57.8" h).
Weight	Net 100kg (220 lbs); Shpg. 136kg (300 lbs).

Accessories



50kN Clamped Boss Load Ring

Code: [78-0860](#)



Adaptor kit, to perform CBR on the Tritest 50 load frame

Code: [25-3518/10](#)



Clamped Boss Load Ring - 10.0 kN

Code: [78-0460](#)



Clamped Boss Load Ring - 28.0 kN

Code: [78-0760](#)



Clamped Boss Load Ring - 3.0 kN

Code: [78-0160](#)



Clamped Boss Load Ring - 4.5 kN

Code: [78-0260](#)

Alternatives



MultiPlex 50 Load Frame

Code: [25-3700/01](#)



Versa-Loader

Code: [25-3525/02](#)



Adaptor kit, to perform CBR on the Tritest 50 load frame

Code: [25-3518/10](#)

Product Group: [CBR Load Frames](#)

Contains a platen adaptor and a stabilising bar



Cbr-Test 50 Machine 50kN Capacity BS and ASTM Supplied with Stabilising Bar.

Code: [24-9150/06](#)

Product Group: [CBR Load Frames](#)

- Single speed machine (BS/EN and ASTM)
- Rapid platen adjustment
- Complete with stabilising bar
- Compact, bench-mounting design
- Options for mechanical or electronic measurement

Designed for performing laboratory CBR tests to BS 1377, EN13286-47 and ASTM D1883, this bench mounting machine comprises a twin column frame incorporating a motorised drive system. Rapid adjustment of the platen is provided, which enables daylight to be taken up quickly and also close control of application of a seating load.

Specification

Dimensions (l x w x h)	550 x 400 x 1220 mm
Max vertical clearance	800 mm
Horizontal clearance	255 mm
Platen diameter	133 mm
Platen travel	105 mm
Weight kg	80

Accessories



50kN Clamped Boss Load Ring

Code: [78-0860](#)



50kN S-type Load Cell

Code: [27-1559](#)



ASTM Cbr Mould Complete with Collar & Perforated Base

Code: [24-9228](#)



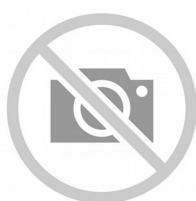
Bracket and Adaptor. Dual Purpose Mounting Bracket for CBR Penetration Gauges EL24-9184/EL24-9186

Code: [24-9188](#)



BS Cbr Mould Body.

Code: [24-9198](#)



BS Extension Collar

Code: [24-9200](#)



BS Solid Base or Top Plate

Code: [24-9204](#)



Cbr Penetration Piston (Adjustable).

Code: [24-9183](#)



CBR Penetration Transducer 50mm Travel Fitted with 5 Pin Din Plug.

Code: [27-1705](#)



Clamped Boss Load Ring - 10.0 kN

Code: [78-0460](#)



Clamped Boss Load Ring - 2.0 kN

Code: [78-0060](#)



Clamped Boss Load Ring - 28.0 kN

Code: [78-0760](#)



Penetration Dial Gauge BS

Code: [24-9186](#)



Penetration Piston

Code: [24-9182](#)



Penetration/Swell Dial Gauge ASTM.

Code: [24-9184](#)

Alternatives



CBR-Test 50 Machine 50 kN Capacity BS and ASTM Supplied with Stabilising Bar.

Code: [24-9150/02](#)



Cbr-Test 50 Machine 50kN Capacity BS and ASTM Supplied with Stabilising Bar.

Code: [24-9150/01](#)



Cbr-Test 50 Machine 50kN Capacity BS and ASTM Supplied with Stabilising Bar.

Code: [24-9150/06](#)



MultiPlex 50 Load Frame

Code: [25-3700/01](#)



Penetration Piston

Code: [24-9182](#)

Product Group: [Penetration Measurement](#)

1.935 mm² (3 in²) area foot of case hardened steel.
Designed to fit all ELE load rings.



Bracket and Adaptor. Dual Purpose Mounting Bracket for CBR Penetration Gauges EL24-9184/EL24-9186

Code: 24-9188

Product Group: In-situ CBR, Conversion of In-situ to Laboratory CBR, Penetration Measurement

Dual purpose mounting bracket for CBR penetration dial gauges. Allows gauge to be fixed to penetration piston or load ring.

Standards

BS 1377, BS 1924



Penetration/Swell Dial Gauge ASTM.

Code: [24-9184](#)

Product Group: [Expansion \(swell\) Test Equipment](#),
[In-situ CBR](#), [Conversion of In-situ to Laboratory CBR](#),
[Penetration Measurement](#)

1 in travel x 0.0005 in divisions. Complete with rack extensions and chisel edge anvil.

Standards

BS 1377, BS 1924



Penetration Dial Gauge BS

Code: [24-9186](#)

Product Group: [In-situ CBR](#), [Conversion of In-situ to Laboratory CBR](#), [Penetration Measurement](#)

Complete with rack extensions and chisel edge anvil. 25 mm travel x 0.01 mm divisions.

Standards

BS 1377, BS 1924



50kN S-type Load Cell

Code: [27-1559](#)

Product Group: [Load Measurement](#), [Force measurement](#), [Electronic Instrumentation](#), [Electronic Instrumentation](#)

Maximum working capacity of 50 kN and excitation 10 V ac/dc with an output of 2.7 mV/V nominal.

Aluminium alloy and stainless steel construction with IP65 environmental protection.

Standards

EN 12697-34

Further Information

****NOT AVAILABLE FOR SALE IN THE USA****

Accessories



Breaking Head (Marshall)

Code: [45-6850](#)



S-Type Load Cell 5 kN.for Triaxial Tests. Fitted with 5 Pin Din Plug.

Code: [27-1551](#)

Alternatives



Breaking Head (Marshall)

Code: [45-6850](#)



S-Type Load Cell 5 kN. for Triaxial Tests. Fitted with 5 Pin Din Plug.

Code: [27-1551](#)



Clamped Boss Load Ring - 10.0 kN

Code: [78-0460](#)

Product Group: [Digital Tritest 50 Load Frame, Proving Rings, Force measurement, Clamped Boss Load Rings](#)

Specification

Capacity: kN, kgf, lbf	10.0, 1000, 2250
Typical Design sensitivity: N/div, kgf/div, lbf/div	7.7, 0.77, 1.73
Overall height mm	248
Approx weight kg	4.6
Capacity	10 kN
Value of CBR	8% to 40%
Capacity - lbf	2,250
Capacity - kN	10
Capacity - kgf	1,000
Typical Design Sensitivity - lbf/div	1.73
Typical Design Sensitivity - kN/div	7.7
Typical Design Sensitivity - Kgf/div	0.77
Overall Height	9.76" (248 mm)
Approx Weight	10.1 lbs.(4.6 kg)

Accessories



50kN Clamped Boss Load Ring

Code: [78-0860](#)



Clamped Boss Load Ring - 2.0 kN

Code: [78-0060](#)



Clamped Boss Load Ring - 28.0 kN

Code: [78-0760](#)



Clamped Boss Load Ring - 3.0 kN

Code: [78-0160](#)



Clamped Boss Load Ring - 4.5 kN

Code: [78-0260](#)

Spares/Consumables



Spare Dial Indicator for Load Rings

Code: [78-5461](#)

Alternatives



50kN Clamped Boss Load Ring

Code: [78-0860](#)



Clamped Boss Load Ring - 2.0 kN

Code: [78-0060](#)



Clamped Boss Load Ring - 28.0 kN

Code: [78-0760](#)



Clamped Boss Load Ring - 3.0 kN

Code: [78-0160](#)



Clamped Boss Load Ring - 4.5 kN

Code: [78-0260](#)



Clamped Boss Load Ring - 28.0 kN

Code: 78-0760

Product Group: Digital Tritest 50 Load Frame, Proving Rings, CBR-Test 50 Machine, Conversion of In-situ to Laboratory CBR, CBR Loading Press, Hand-Operated, Force measurement, Load Measurement, Load Measurement, Clamped Boss Load Rings

Standards

BS 1377, BS 1924

Specification

Capacity: kN, kgf, lbf	28.0, 2800, 6000
Typical Design sensitivity: N/div, kgf/div, lbf/div	25.5, 2.54, 5.45
Overall height mm	248
Approx weight kg	5.4
Capacity	28 kN
Value of CBR	Average range of CBR
Capacity - lbf	6,000
Capacity - kN	28
Capacity - kgf	2,800
Typical Design Sensitivity - lbf/div	5.45
Typical Design Sensitivity - kN/div	25.5
Typical Design Sensitivity - Kg/div	2.54
Overall Height	9.76" (248 mm)
Approx Weight	11 .9 lbs.(5.4 kg)

Accessories



50kN Clamped Boss Load Ring

Code: 78-0860



Clamped Boss Load Ring - 10.0 kN

Code: [78-0460](#)



Clamped Boss Load Ring - 2.0 kN

Code: [78-0060](#)



Clamped Boss Load Ring - 3.0 kN

Code: [78-0160](#)



Clamped Boss Load Ring - 4.5 kN

Code: [78-0260](#)



Digital Proving Ring, 6,000 lbs (28.0 kN)

Code: [78-0764](#)

Spares/Consumables



Spare Dial Indicator for Load Rings

Code: [78-5461](#)

Alternatives



50kN Clamped Boss Load Ring

Code: [78-0860](#)



Clamped Boss Load Ring - 10.0 kN

Code: [78-0460](#)



Clamped Boss Load Ring - 2.0 kN

Code: [78-0060](#)



Clamped Boss Load Ring - 3.0 kN

Code: [78-0160](#)



Clamped Boss Load Ring - 4.5 kN

Code: [78-0260](#)



Digital Proving Ring, 6,000 lbs (28.0 kN)

Code: [78-0764](#)



50kN Clamped Boss Load Ring

Code: 78-0860

Product Group: Digital Tritest 50 Load Frame, Load Measurement, Proving Rings, CBR-Test 50 Machine, Load Measurement, CBR Loading Press, Hand-Operated, Force measurement, Accessories for the Marshall Test, Accessories for the Marshall test, Clamped Boss Load Rings

Calibrated in compression.

Standards

EN 12697-34

Specification

Capacity: kN, kgf, lbf	50.0, 5000, 11,200
Typical Design sensitivity: N/div, kgf/div, lbf/div	45.5, 4.54, 10.18
Overall height mm	248
Approx weight kg	7.9
Value of CBR	Above 40%
Capacity - kN	50
Capacity - kgf	5000
Capacity - lbf	11,200
Typical Design Sensitivity - kN/div	45.5
Typical Design Sensitivity - Kgf/div	4.54
Typical Design Sensitivity - lbf/div	10.18
Overall Height	9.76" (248 mm)
Approx Weight	17.4 lbs.(7.9 kg)

Accessories



Clamped Boss Load Ring - 10.0 kN

Code: 78-0460



Clamped Boss Load Ring - 2.0 kN

Code: [78-0060](#)



Clamped Boss Load Ring - 28.0 kN

Code: [78-0760](#)



Clamped Boss Load Ring - 3.0 kN

Code: [78-0160](#)



Clamped Boss Load Ring - 4.5 kN

Code: [78-0260](#)



Digital Proving Ring, 11,200 lbs (50.0 kN)

Code: [78-0864](#)

Spares/Consumables



Spare Dial Indicator for Load Rings

Code: [78-5461](#)

Alternatives



Clamped Boss Load Ring - 10.0 kN

Code: [78-0460](#)



Clamped Boss Load Ring - 2.0 kN

Code: [78-0060](#)



Clamped Boss Load Ring - 28.0 kN

Code: [78-0760](#)



Clamped Boss Load Ring - 3.0 kN

Code: [78-0160](#)



Clamped Boss Load Ring - 4.5 kN

Code: [78-0260](#)



Digital Proving Ring, 11,200 lbs (50.0 kN)

Code: [78-0864](#)



ASTM Cbr Mould Complete with Collar & Perforated Base

Code: [24-9228](#)

Product Group: [ASTM/AASHTO CBR mould](#)

With collar and perforated baseplate.

Standards

ASTM D1883, AASHTO T193

Specification

Mould	152.4 x 177.8 mm (inside diameter x height)
Collar	50.8 mm height, fits both ends of mould
Base plate	Perforated
Construction	All steel, plated
Weight kg	9

Accessories



4.5Kg Annular Surcharge Weight ASTM.

Code: [24-9243](#)



5 Lb. Annular Surcharge Weight ASTM.

Code: [24-9245](#)



ASTM Cutting Collar.

Code: [24-9236](#)



ASTM Spacing Disc.

Code: [24-9238](#)

Alternatives



4.5Kg Annular Surcharge Weight ASTM.

Code: [24-9243](#)



5 Lb. Annular Surcharge Weight ASTM.

Code: [24-9245](#)



ASTM Cutting Collar.

Code: [24-9236](#)



ASTM Spacing Disc.

Code: [24-9238](#)



ASTM Spacing Disc.

Code: [24-9238](#)

Product Group: [Spacer Discs, ASTM/AASHTO CBR mould accessories](#)

150.8 mm diameter x 61.4 mm deep.

Specification

Construction

Steel; machined on all sides.

Finish

Plated.

Weights

Net 18.9 lbs. (8.6 kg).

Accessories



ASTM Cbr Mould Complete with Collar & Perforated Base

Code: [24-9228](#)

Alternatives



ASTM Cbr Mould Complete with Collar & Perforated Base

Code: [24-9228](#)



Filter Screen 150mm Dia with 0.15mm Mesh.

Code: [24-9240](#)

Product Group: [Filter Screen, ASTM/AASHTO CBR mould accessories](#)

150 mm dia, 150 µm mesh for use with ASTM mould.

Specification

Mesh	Brass; number 100.
Size	5-15 /16" diam. (135 mm).
Weight	Net 1 oz. (28 g).

Accessories



Filter Paper Equivalent to Whatman No 5 150mm Dia Box of 100.

Code: [24-9250](#)

Alternatives



Filter Paper Equivalent to Whatman No 5 150mm Dia Box of 100.

Code: [24-9250](#)



4.5Kg Annular Surcharge Weight ASTM.

Code: [24-9243](#)

Product Group: [ASTM/AASHTO CBR mould accessories](#)

Accessories



ASTM Cbr Mould Complete with Collar & Perferated Base

Code: [24-9228](#)

Alternatives



ASTM Cbr Mould Complete with Collar & Perferated Base

Code: [24-9228](#)



ASTM Cutting Collar.

Code: [24-9236](#)

Product Group: [Cutting Edge, ASTM/AASHTO CBR mould accessories](#)

To fit ASTM CBR mould body, manufactured with a cutting edge to enable undisturbed samples to be taken in the field.

Standards

ASTM D1883, AASHTO T193

Specification

Dimensions	6" i.d. x 1-1/2" h. (152.4 x 38 mm).
Construction	Machined seamless steel tubing; recessed for mounting on CBR Mold.
Finish	Plated.
Weight	Net 1-1/2 lbs. (0.7 kg).

Accessories



ASTM Cbr Mould Complete with Collar & Perforated Base

Code: [24-9228](#)

Alternatives



ASTM Cbr Mould Complete with Collar & Perforated Base

Code: [24-9228](#)