



IF IT'S WORTH BUILDING, IT'S WORTH TESTING

This wishlist was generated on 25/01/2017, and contains the following Products:

45-3810/01

Rotatest 1500

45-3803

Filter Discs Pack of 100

82-8020/01

Distilled Water Still

78-1225/01

100 Litre Drying Oven

525-180/01

Laboratory Conductivity Meter with Conductivity Cell Swing Arm Electrode Holder and Manual.

525-210/01

Laboratory Ph Meter with Ph Electrode Swing Arm Temp Probe Manual and Buffer Capsules.

525-356/01

Digestion Unit 20 Place Semi-Auto C/W Block Rack Heat Shield Exhaust Console & 250ML Tubes

78-3104/01

Digital Hotplate

38-0200/01

ELE Flame Photometer

38-0320/01

Air Compressor

38-0250

Calcium Filter

38-0280

Regulators for Propane Gas

78-5456/01

Electronic Balance - 4600 g x 0.01 g

83-4170/01

Muffle Furnace

78-1235/01

150 Litre Drying Oven

485-030/01

Visible Range Spectro- Photometer with 100 Plastic Cuvettes (10 X 10mm) Cell Holder & Mains Lead

78-5485/01

Electronic Balance - 8000 g x 0.2 g

543-860/01

Grinder for Sample Preparation of Grains. 240V 50Hz 1Ph.

82-8500/01

Water Bath - 12 litres

525-375/01

Automatic distillation unit 220-240V 50/60Hz 1ph

46-4825/01

Magnetic Stirrer

80-0200/01

ELE Sieve Shaker

23-1504

150mm Dia Soil Auger Head

23-1501

100mm Dia Soil Auger Head

23-1525

50mm Dia Dutch Soil Auger Head.

82-1120

Conical Flask (Erlenmeyer) - 500 ml

82-2100

Desiccator - Non-vacuum

82-1140

Conical Flask (Erlenmeyer) - 250 ml

82-0120

Beaker - 100 ml

82-0380

Measuring Cylinder - Glass 100 ml

82-5310

Maximum and Minimum Thermometer

82-1260

Graduated Pipette - 25 ml

82-5005

Non Hazardous Glass Thermometers -10 - +260°C



Rotatest 1500

Code: 45-3810/01

Product Group: Asphalt Centrifuge Extractors

Centrifuge extractor used to determine the quantitative amount of bitumen in bituminous paving mixtures. Variable speed control from 0 to 3600 rpm through the front panel mounted control knob and brake control included for rapid deceleration.

Precision machined aluminium removable cover with integral cup for adding solvent, with sealed cast aluminium housing. Centrifuge extractor used to determine the quantitative amount of bitumen in bituminous paving mixtures. Variable speed control from 0 to 3600 rpm through the front panel mounted control knob and brake control included for rapid deceleration.

Precision machined aluminium removable cover with integral cup for adding solvent, with sealed cast aluminium housing.

Standards

EN 12697-1, ASTM D2172, AASHTO T164

Further Information

****NOT AVAILABLE FOR SALE IN THE USA****

1500 g capacity. Supplied with 100 Filter Discs. For 220 V AC, 50 - 60 Hz, 1ph.

Accessories



Bowl - 2.5 litre

Code: 81-5020



Desiccator - Non-vacuum

Code: [82-2100](#)



Evaporating Dish - 100 x 40 mm

Code: [82-1970](#)



Filter Discs Pack of 100

Code: [45-3803](#)



Hotplate

Code: [78-2950/01](#)



Measuring Cylinder - Glass 100 ml

Code: [82-0380](#)



Measuring Cylinder - Glass 1000 ml

Code: [82-0500](#)



Sample Tray - 306 x 306 x 38 mm

Code: [81-4020](#)



Silica Gel

Code: [82-7091](#)



Volumetric Flask - 100 ml

Code: [82-1000](#)



Volumetric Flask - 1000 ml

Code: [82-1060](#)

Alternatives



Muffle Furnace

Code: [83-4170/01](#)



Rotatest 3000

Code: [45-3815/01](#)



Filter Discs Pack of 100

Code: [45-3803](#)

Product Group: [Asphalt Centrifuge Extractors](#)

248mm outer diameter with 44mm diameter hole.

Standards

EN 12697-1, ASTM D2172, AASHTO T164

Further Information

****NOT AVAILABLE FOR SALE IN THE USA****



Distilled Water Still

Code: [82-8020/01](#)

Product Group: [Distilled Water Still](#)

Further Information

****NOT AVAILABLE FOR SALE IN THE USA****

Specification

Dimensions (l x w x h)	590 x 530 x 940 mm
Boiling chamber	Glass
Condenser	Borosilicate glass
Output	3.5 litres/hr when permanently connected to water supply
Electrical supply	220 – 240 V AC, 50 - 60 Hz, 1 ph
Rated power	2.75 kW
Weight	12 kg



100 Litre Drying Oven

Code: [78-1225/01](#)

Product Group: [Oven Drying Method](#), [Oven Drying Method](#), [Oven Drying Method](#)

Standards

BS 2648, BS 598, BS 1377, BS 1924

Further Information

****NOT AVAILABLE FOR SALE IN THE USA****

Alternatives



150 Litre Drying Oven

Code: [78-1235/01](#)



225 Litre Drying Oven

Code: [78-1250/01](#)



425 Litre Drying Oven

Code: [78-0135/01](#)



50 Litre Drying Oven

Code: [78-1215/01](#)



Laboratory Conductivity Meter with Conductivity Cell Swing Arm Electrode Holder and Manual.

Code: [525-180/01](#)

Product Group: [General laboratory instrumentation](#)

- 5 measurement ranges.
- Automatic temperature compensation.
- Recorder output.

This easy-to-use instrument measures conductivity over 5 ranges. Readings are automatically temperature compensated with a choice of either 20 or 25°C as a reference temperature. A zero control on the 20 micro Siemen range enables the elimination of cable capacities so ensuring accurate results.

The unit has been designed for use with the range of conductivity cells specified, all of which are temperature compensated. However, other cells can be used in conjunction with the temperature compensation probe.

Further Information

Supplied complete with probe holder and conductivity level (K=1) and full operating instructions.

Spares/Consumables



Conductivity Cell K=1.

Code: [525-180/10](#)



Laboratory Ph Meter with Ph Electrode Swing Arm Temp Probe Manual and Buffer Capsules.

Code: [525-210/01](#)

Product Group: [General laboratory instrumentation](#)

Spares/Consumables



Spare Ph Probe for Lab Ph and Ion Meters.

Code: [525-210/10](#)



Digestion Unit 20 Place Semi-Auto C/W Block Rack Heat Shield Exhaust Console & 250ml Tubes

Code: [525-356/01](#)

Product Group: [Kjedahl apparatus](#)

Supplied with digestion block, carrying rack with heat shield, exhaust system, two-tier console, instruction manual and 20 digestion tubes, 250 ml, 300 x 42 mm.

Further Information

For 220-240 V, 50/60 Hz, 1 ph.

Spares/Consumables



Digestion Tube Macro 250ml

Code: [525-355/10](#)



Digital Hotplate

Code: [78-3104/01](#)

Product Group: [Digital Hotplate](#)

Further Information

****Not available for sale in the USA****

Specification

Dimensions	520 x 360 x 130 mm
Construction	Robust metal with anodised aluminium plate heated surface
Maximum temperature	300 x 1°C
Rated power	1500 W



ELE Flame Photometer

Code: [38-0200/01](#)

Product Group: [ELE Flame Photometer](#)

Special Note: The Flame Photometer requires a source of moisture-free air at 6 litres/minute at a pressure of 1 kg/cm². It also requires a fuel source for the flame and a regulator (see accessories).

Standards

EN 196-21, ASTM C114, TEST 17

Further Information

****NOT AVAILABLE FOR SALE IN THE USA****

For 220-240 V AC, 50-60 Hz, 1 ph

Specification

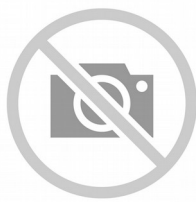
Dimensions (l x w x h)	420 x 360 x 300 mm
Readout	LED three 12.5 mm digits
Sensitivity Na	3 to 100 ppm
K	3 to 100 ppm
Ca	5 to 100 ppm (optional filter)
Reproducibility	1% CV for 20 consecutive samples using 10 ppm, set to read 100
Recorder Output	Nominal 1.00 V for a reading of 100.0
Weight	8 kg

Accessories



Air Compressor

Code: [38-0320/01](#)



Barium Filter

Code: 38-0260



Calcium Filter

Code: 38-0250



Regulators for Natural Gas

Code: 38-0270



Regulators for Propane Gas

Code: 38-0280



Air Compressor

Code: [38-0320/01](#)

Product Group: [ELE Flame Photometer](#)

Supplies air at 6 litres/minute at a pressure of 1 kg/cm², for use with 38-0200/01 Flame Photometer.

Standards

EN 196-21, ASTM C114, TEST 17

Further Information

****NOT AVAILABLE FOR SALE IN THE USA****



Calcium Filter

Code: [38-0250](#)

Product Group: [ELE Flame Photometer](#)

Standards

EN 196-21, ASTM C114, TEST 17

Further Information

****NOT AVAILABLE FOR SALE IN THE USA****



Regulators for Propane Gas

Code: [38-0280](#)

Product Group: [ELE Flame Photometer](#)

Standards

EN 196-21, ASTM C114, TEST 17

Further Information

****NOT AVAILABLE FOR SALE IN THE USA****



Electronic Balance - 4600 g x 0.01 g

Code: [78-5456/01](#)

Product Group: [Electronic Balances](#)

Further Information

****Not available for sale in the USA****

Specification

Capacity resolution	4500 g x 0.01 g
Pan size	160 x 160 mm
Mains and battery	No
Dimensions (w x d x h)	220 x 310 x 90 mm
Weight	6 kg
Weighing units	g, kg, lb, lb:oz, oz, ozt, T, custom unit.
Repeatability	0.02 g



Muffle Furnace

Code: [83-4170/01](#)

Product Group: [Furnaces](#), [Loss-on-Ignition](#),
[Loss-on-Ignition](#)

Standards

EN 196-2, EN 459-2, EN 13454-2, BS 1016-4, ISO 344, ISO 1171, ASTM D2361, ASTM D2795, ASTM D3714

Specification

External Dimensions (l x w x h)	545 x 385 x 400 mm
Work chamber dimensions (l x w x h)	300 x 200 x 120 mm
Internal volume	6.9 litres
Maximum temperature	1200 °C
Electrical supply	220 – 240 V AC, 50 - 60 Hz, 1 ph
Power supply	3500 W
Weight	130 kg

Spares/Consumables



Controller, for use in 83-4170/01

Code: [83-4170/11](#)



Element heating for use in 83-4170

Code: [83-4170/14](#)



Element/Chamber complete, heating, for use in 83-4170/01

Code: [83-4170/12](#)



Refractory brick for 83-4170/01

Code: [83-4170/13](#)



Thermostat, KGrade, 370 long, dia 2.5, for 83-4170/01

Code: [83-4170/10](#)

Alternatives



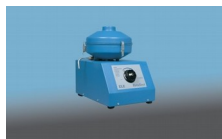
Heat of Hydration Apparatus

Code: [38-4600/01](#)



Heat of Hydration Apparatus

Code: [38-4600/06](#)



Rotatest 1500

Code: [45-3810/01](#)



Rotatest 3000

Code: [45-3815/01](#)



150 Litre Drying Oven

Code: [78-1235/01](#)

Product Group: [Oven Drying Method](#), [Oven Drying Method](#), [Oven Drying Method](#)

Standards

BS 2648, BS 598, BS 1377, BS 1924

Further Information

****NOT AVAILABLE FOR SALE IN THE USA****

Alternatives



100 Litre Drying Oven

Code: [78-1225/01](#)



225 Litre Drying Oven

Code: [78-1250/01](#)



425 Litre Drying Oven

Code: [78-0135/01](#)

Product Sheet

www.ele.com
+44 (0) 01525 249 200



50 Litre Drying Oven

Code: [78-1215/01](#)



Visible Range Spectro- Photometer with 100 Plastic Cuvettes (10 X 10mm) Cell Holder & Mains Lead

Code: [485-030/01](#)

Product Group: [General laboratory instrumentation](#)

- Microprocessor-controlled.
- Digital display 320-920 nm wavelength.
- Automatic zero and calibration.

This instrument combines advanced electronics with a high quality optical system operating over the range 320-920 nm.

The monochrominator is a modified Czerny Turner design. It incorporates a cam-driven 1200 lines/mm holographic diffraction grating and features automatic second order resonance suppression. The complete optical system is housed in an independently enclosed unit for maximum protection.

Careful design has ensured that heat transfer to the sample is minimised. This enables precise measurements to be performed on a temperature dependent basis. A low noise, high stability and solid state detector for accurate reproducible results combined with a rigid structure provides a system with fast warm-up, low drift and high reliability

Further Information

Supplied complete with 100 plastic 10 x 10 mm cuvettes, 10 x 10 mm cell holder and mains lead.



Electronic Balance - 8000 g x 0.2 g

Code: [78-5485/01](#)

Product Group: [Electronic Balances](#)

Further Information

****Not available for sale in the USA****

Specification

Capacity resolution	8000 g x 0.2 g
Pan size	225 x 275 mm
Mains and battery	Yes
Dimensions (w x d x h)	315 x 355 x 110 mm
Weight	18 kg
Weighing units	g, kg, ct, GN, N, lb, oz, lb:oz.



Grinder for Sample Preparation of Grains. 240V 50Hz 1Ph.

Code: [543-860/01](#)

Product Group: [Crop processing](#)



Water Bath - 12 litres

Code: [82-8500/01](#)

Product Group: [Water Baths](#)

Further Information

****NOT AVAILABLE FOR SALE IN THE USA****

Specification

Capacity	12 litres
Working area	210 x 300 mm
Tray	Yes
Max Water Depth	130 mm
Controller	Digital
Temperature range and stability °C	0 to 99.9 ± 0.1
Electrical supply	220 – 240 V AC, 50 - 60 Hz, 1 ph
Rated power kW	1.5
Weight	8.1 kg



Automatic distillation unit 220-240V 50/60Hz 1ph

Code: 525-375/01

Product Group: Kjeldahl apparatus

- Fully automatic steam generator.
- Electronic control of steam pressure and water level.
- Programmable, utilising microprocessor control.

This distillation unit is fully automatic with full microprocessor control. The operator has only to insert the digestion tube and the distillate receiver vessel.

The control display is a back-lit LCD with 2 x 16 character lines. Information is entered via the touch sensitive keypad which has numerical characters for entering distillation program parameters, and manual function keys to activate the chemical addition pumps and for programming.

There are 10 programmes with 0-8 for Kjeldahl and associated distillations and 9 for alternative distillation work. Each of the programmes have the following variables entered in sequence. All the programme steps are controlled by time with chemical addition pumps having a known flow rate of 13 ml/second.

The unit is divided into 4 chambers, distillation, instrumentation, steam generation and chemical pumps, for maximum protection of the various components. All the functions of the unit are monitored and errors are displayed on the character display.

This unit has a manual end point titration.

Further Information

For 220-240 V, 50/60 Hz, 1 ph.

Accessories



Storage tanks for automatic distillation units-set of 3

Code: 525-376



Magnetic Stirrer

Code: [46-4825/01](#)

Product Group: [Ring and Ball Apparatus](#)

Utilises a rotating magnetic field to induce variable speed stirring action. A built-in regulating transformer provides fine temperature control of liquid up to a maximum temperature of +150°C. The unit is suitable for use with the Ring and Ball Apparatus.

Standards

EN 1427, BS 2000-58

Further Information

****NOT AVAILABLE FOR SALE IN THE USA****



ELE Sieve Shaker

Code: [80-0200/01](#)

Product Group: [ELE Sieve Shaker](#)

The ELE sieve shaker is powered by an electromagnetic drive that has no rotating parts to wear making it maintenance free and extremely quiet in operation.

The unit features a triple Vertical-Lateral-Rotary vibrating action that moves the sample over the sieve producing faster more efficient sieving, while the rapid vertical movements also help keep the apertures from blinding.

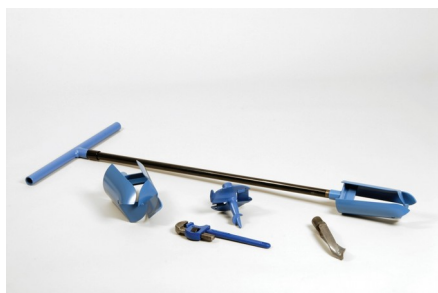
The shaker is ideal for laboratory or on site use. It is robust, compact and sufficiently lightweight to be portable. The separate digital microprocessor controlled console unit incorporates a keypad for setting the sieving program and is isolated from any effects of vibration from the shaker.

As standard the shaker includes, timer 0-999 minutes, adjustable vibration intensity and adjustable intermittent or continuous operation.

Further Information

****NOT AVAILABLE FOR SALE IN THE USA****

The unit accepts up to ten 200 mm or 8 inch, full height, diameter sieves and lid and receiver, or up to six 300 mm or 12 inch diameter sieves and lid and receiver. Complete as specified. Dimensions (l x w x h) 380 x 440 x 1085 mm. For 220 - 240 V AC, 50 Hz 1ph.



150mm Dia Soil Auger Head

Code: [23-1504](#)

Product Group: [Soil and Gravel Auger Heads](#)

Constructed of heavy-duty steel plates; partly interlocked at the cutting end and suitable for cohesive soils.

Accessories



38mm Diameter Sample Tube 230mm Long Complete with End Caps.

Code: [23-1577](#)



Extension Rod 27mm Diameter 1m Long. for Use with Auger Heads

Code: [23-1541](#)



Handle and T Piece for Use with EL23-1541.

Code: [23-1547](#)



Jarring Link for Driving Sample Tubes.

Code: [23-1587](#)



Spiral Auger 40mm Diameter. One Piece Model

Code: [23-1617](#)



Stillson Wrench Size 14.

Code: [23-1543](#)

Alternatives



100mm Dia Soil Auger Head

Code: [23-1501](#)



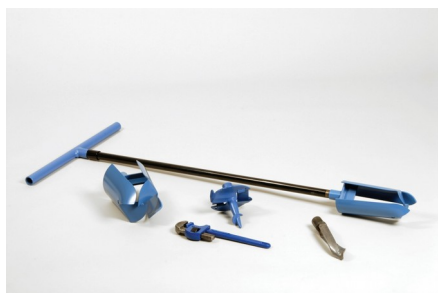
150mm Dia Gravel Auger Head.

Code: [23-1517](#)



50mm Dia Dutch Soil Auger Head.

Code: [23-1525](#)



100mm Dia Soil Auger Head

Code: [23-1501](#)

Product Group: [Soil and Gravel Auger Heads](#)

Constructed of heavy-duty steel plates; partly interlocked at the cutting end and suitable for cohesive soils.

Accessories



38mm Diameter Sample Tube 230mm Long Complete with End Caps.

Code: [23-1577](#)



Extension Rod 27mm Diameter 1m Long. for Use with Auger Heads

Code: [23-1541](#)



Handle and T Piece for Use with EL23-1541.

Code: [23-1547](#)



Jarring Link for Driving Sample Tubes.

Code: [23-1587](#)



Spiral Auger 40mm Diameter. One Piece Model

Code: [23-1617](#)



Stillson Wrench Size 14.

Code: [23-1543](#)

Alternatives



150mm Dia Gravel Auger Head.

Code: [23-1517](#)



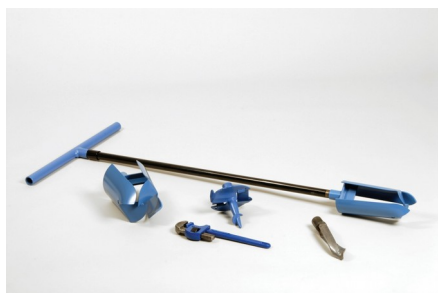
150mm Dia Soil Auger Head

Code: [23-1504](#)



50mm Dia Dutch Soil Auger Head.

Code: [23-1525](#)



50mm Dia Dutch Soil Auger Head.

Code: [23-1525](#)

Product Group: [Soil and Gravel Auger Heads](#)

Constructed of heavy-duty steel plates; partly interlocked at the cutting end and suitable for fine, silty sand.

Accessories



38mm Diameter Sample Tube 230mm Long Complete with End Caps.

Code: [23-1577](#)



Extension Rod 27mm Diameter 1m Long. for Use with Auger Heads

Code: [23-1541](#)



Handle and T Piece for Use with EL23-1541.

Code: [23-1547](#)



Jarring Link for Driving Sample Tubes.

Code: [23-1587](#)



Spiral Auger 40mm Diameter. One Piece Model

Code: [23-1617](#)



Stillson Wrench Size 14.

Code: 23-1543

Alternatives



100mm Dia Soil Auger Head

Code: 23-1501



150mm Dia Gravel Auger Head.

Code: 23-1517



150mm Dia Soil Auger Head

Code: 23-1504



Conical Flask (Erlenmeyer) - 500 ml

Code: [82-1120](#)

Product Group: [Funnels and Flasks](#)

Borosilicate glass, wide mouth graduated, 100 ml sub-divisions

Further Information

****NOT AVAILABLE FOR SALE IN THE USA****



Desiccator - Non-vacuum

Code: [82-2100](#)

Product Group: [Desiccators](#)

200 mm internal diameter borosilicate glass. Supplied with perforated zinc disc.

Further Information

****NOT AVAILABLE FOR SALE IN THE USA****



Conical Flask (Erlenmeyer) - 250 ml

Code: [82-1140](#)

Product Group: [Funnels and Flasks](#)

Borosilicate glass, wide mouth graduated, 50 ml sub-divisions

Further Information

****NOT AVAILABLE FOR SALE IN THE USA****



Beaker - 100 ml

Code: [82-0120](#)

Product Group: [Beakers and Covers](#)

Borosilicate glass, squat form.

Further Information

****NOT AVAILABLE FOR SALE IN THE USA****



Measuring Cylinder - Glass 100 ml

Code: [82-0380](#)

Product Group: [Volumetric Shrinkage, Measuring Cylinders, BS](#)

Soda glass, spouted, BS EN 4788.

Further Information

****NOT AVAILABLE FOR SALE IN THE USA****



Maximum and Minimum Thermometer

Code: [82-5310](#)

Product Group: [General-purpose Thermometers](#)

Non hazardous. Range -40 - +50°C

Further Information

****NOT AVAILABLE FOR SALE IN THE USA****



Graduated Pipette - 25 ml

Code: [82-1260](#)

Product Group: [Pipettes and Burettes](#)

Type 1, Class B, BS 700 0.25 ml subdivisions.

Further Information

****NOT AVAILABLE FOR SALE IN THE USA****



Non Hazardous Glass Thermometers -10 - +260°C

Code: [82-5005](#)

Product Group: [Non Hazardous Glass Thermometers](#)

1.0°C divisions + 76 mm immersion

Further Information

****NOT AVAILABLE FOR SALE IN THE USA****