



IF IT'S WORTH BUILDING, IT'S WORTH TESTING

This wishlist was generated on 30/01/2017, and contains the following Products:

79-0135

200mm Dia Iso:565 3310/1 Sieve 200 Mic Stainless Steel Mesh.

79-0095

200mm Dia Iso:565 3310/1 Sieve 100 Mic Stainless Steel Mesh.

79-0250

200mm Dia BS Sieve 1.40mm Stainless Steel Mesh.

79-1515

200mm Dia BS Sieve 5.00mm Perforated Plate.

78-1225/01

100 Litre Drying Oven

80-0200/01

ELE Sieve Shaker

38-2015/01

Automatic Vicat Apparatus

39-0035/01

Automatic/Manual 5 litre nominal capacity Mortar Mixer

39-1130

Scraper

39-1100

Three-gang Mould

39-1150/01

Jolting Table 220 - 240 V 50 Hz

SP39-1401/01

Humidity Cabinet ASTM 150 Litre Capacity

39-7100/01

10kN Flexural/Tensile Testing Machine

39-6160/01

ADR-Auto V2.0 250/25 Cement Machine C/W Compression and Flexural Jigs and Platen Sets

39-6220

Set of Distance Pieces

39-6160

Flexural Jig Assembly

78-5457/01

Electronic Balance - 8 000 g x 0.1 g

78-5405/01

Electronic Balance - 620 g x 0.001 g

83-4170/01

Muffle Furnace



200mm Dia Iso:565 3310/1 Sieve 200 Mic Stainless Steel Mesh.

Code: 79-0135

Product Group: 200mm Diameter BS Sieves, 200mm Diameter BS Sieves, 200mm Diameter BS Sieves

Standards

ISO 565, EN933-2, BS410-1

Further Information

****NOT AVAILABLE FOR SALE IN THE USA****



200mm Dia Iso:565 3310/1 Sieve 100 Mic Stainless Steel Mesh.

Code: 79-0095

Product Group: 200mm Diameter BS Sieves, 200mm Diameter BS Sieves, 200mm Diameter BS Sieves

Standards

BS 410-1, ISO 3310, ISO 565, EN933-2

Further Information

****NOT AVAILABLE FOR SALE IN THE USA****



200mm Dia BS Sieve 1.40mm Stainless Steel Mesh.

Code: [79-0250](#)

Product Group: [200mm Diameter BS Sieves](#), [200mm Diameter BS Sieves](#), [200mm Diameter BS Sieves](#)

Standards

BS 410-1, ISO 3310, ISO 565, EN933-2

Further Information

****NOT AVAILABLE FOR SALE IN THE USA****



200mm Dia BS Sieve 5.00mm Perforated Plate.

Code: 79-1515

Product Group: 200mm Diameter BS Sieves, 200mm Diameter BS Sieves, 200mm Diameter BS Sieves

Standards

BS 410-1, ISO 3310, ISO 565, EN933-2

Further Information

NOT AVAILABLE FOR SALE IN THE USA



100 Litre Drying Oven

Code: [78-1225/01](#)

Product Group: [Oven Drying Method](#), [Oven Drying Method](#), [Oven Drying Method](#)

Standards

BS 2648, BS 598, BS 1377, BS 1924

Further Information

****NOT AVAILABLE FOR SALE IN THE USA****

Alternatives



150 Litre Drying Oven

Code: [78-1235/01](#)



225 Litre Drying Oven

Code: [78-1250/01](#)



425 Litre Drying Oven

Code: [78-0135/01](#)



50 Litre Drying Oven

Code: [78-1215/01](#)



ELE Sieve Shaker

Code: 80-0200/01

Product Group: ELE Sieve Shaker

The ELE sieve shaker is powered by an electromagnetic drive that has no rotating parts to wear making it maintenance free and extremely quiet in operation.

The unit features a triple Vertical-Lateral-Rotary vibrating action that moves the sample over the sieve producing faster more efficient sieving, while the rapid vertical movements also help keep the apertures from blinding.

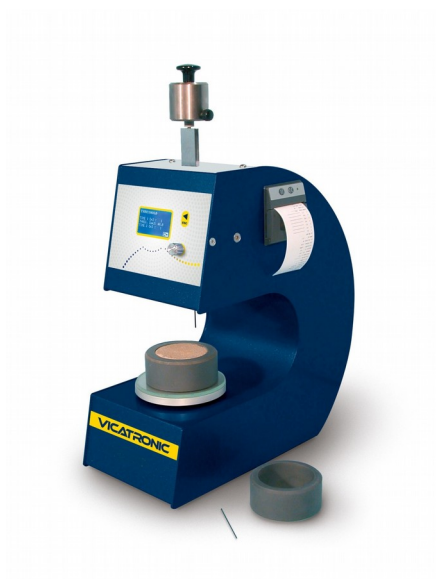
The shaker is ideal for laboratory or on site use. It is robust, compact and sufficiently lightweight to be portable. The separate digital microprocessor controlled console unit incorporates a keypad for setting the sieving program and is isolated from any effects of vibration from the shaker.

As standard the shaker includes, timer 0-999 minutes, adjustable vibration intensity and adjustable intermittent or continuous operation.

Further Information

****NOT AVAILABLE FOR SALE IN THE USA****

The unit accepts up to ten 200 mm or 8 inch, full height, diameter sieves and lid and receiver, or up to six 300 mm or 12 inch diameter sieves and lid and receiver. Complete as specified. Dimensions (l x w x h) 380 x 440 x 1085 mm. For 220 - 240 V AC, 50 Hz 1ph.



Automatic Vicat Apparatus

Code: [38-2015/01](#)

Product Group: [Automatic Vicat](#)

Complete with EN and ASTM Initial and Final needles, Consistency Plunger, Windows(R) software and RS232 cable, 1 x EN and ASTM Mould and Glass Plate. Suitable for continuous use in saturated humidity, at a controlled temperature of $20^{\circ}\text{C} \pm 1^{\circ}\text{C}$.

Standards

ASTM C187, ASTM C191

Further Information

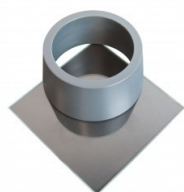
****NOT AVAILABLE FOR SALE IN THE USA****

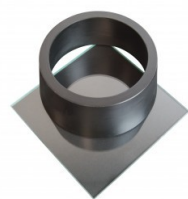
For 220 - 240 V AC, 50 - 60 Hz, 1 ph.

Accessories

ASTM Vicat Mould

Code: [38-2660](#)





EN Vicat Mould

Code: [38-2300](#)



Mould Tank

Code: [38-2015/15](#)



Needle Cleaning Device

Code: [38-2015/12](#)



Printer Paper Rolls

Code: [38-2015/14](#)



Vicat Mould

Code: [38-2200](#)

Spares/Consumables



ASTM Initial and Final Set Needle

Code: [38-2023](#)



Consistency Plunger

Code: [38-2015/16](#)



EN Initial and Final Set Needle

Code: [38-2021](#)



Automatic/Manual 5 litre nominal capacity Mortar Mixer

Code: 39-0035/01

Product Group: Automatic/Manual 5 Litre Nominal Capacity Mortar Mixer

- New Microprocessor control
- New mix program selector
- Complies with latest EN Standards update
- Choice of automatic mixing cycles
- Sand and water dispenser supplied as standard

This mixer is designed to mix mortars and cement pastes to the requirements of the above Standards. The mixing paddle has a planetary motion and is driven by a motor with a microprocessor based speed and program controller. The mixer can be operated either in an automatic or manual mode. When the mixer is used in the manual mode, the two mixing speeds can be changed by means of a rocker switch, without switching off the motor. In the automatic mode any one of the preset mixing programs may be selected.

Standards

EN 196-1, EN 196-3, EN 413-2, EN 459-2, EN 1744-1, EN 13279-2, EN 1015-2, EN 13395-1, EN 13454-2, ISO 679, BS 3892-1, BS 3892-3, BS 6463-103, BS 4551-1

Further Information

****NOT AVAILABLE FOR SALE IN THE USA****

Complete with bowl and paddle, sand and Water dispensers. For 220 - 240 V AC, 50 - 60 Hz, 1 ph.

Specification

Dimensions (l x w x h)	530 x 350 x 580 mm
Speeds (rpm) Low, High	Paddle: 140 ± 5, 285 ± 10 Mixing Head: 62 ± 5, 125 ± 10
Rated Power	180 W
Bowl Capacity	5 litres approx.
Weight	54 kg

Accessories

Product Sheet

www.ele.com
+44 (0) 01525 249 200



Bowl Cover

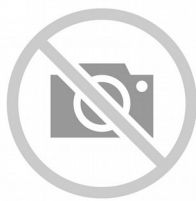
Code: [39-0060](#)



Scraper

Code: [39-0065](#)

Spares/Consumables



Bowl

Code: [39-0031/11](#)



Paddle

Code: [39-0031/10](#)



Scraper

Code: [39-1130](#)

Product Group: [Moulding of Prisms](#)

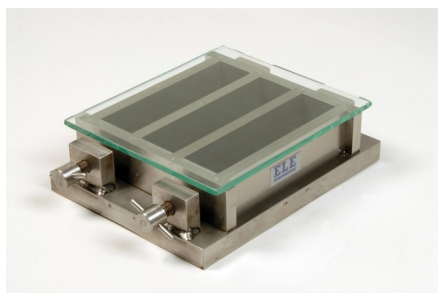
Double-ended, used for spreading and levelling mortar in mould.

Standards

EN 196-1, EN 413-2, EN 459-2, EN 1744-1, EN 1015-10, EN 13454-2, ISO 679, BS 3892-1, BS 4551-1

Further Information

****NOT AVAILABLE FOR SALE IN THE USA****



Three-gang Mould

Code: [39-1100](#)

Product Group: [Moulding of Prisms](#)

For 40.1 x 40 x 160 mm mortar prisms. This mould is manufactured to a very high specification. Supplied with glass plate.

Standards

EN 196-1, EN 413-2, EN 459-2, EN 1015-10, EN 13454-2, ISO 679, BS 3892-1, BS 4551-1

Further Information

****NOT AVAILABLE FOR SALE IN THE USA****

Accessories



Feeding Hopper

Code: [39-1120](#)

Spares/Consumables



Glass Plate

Code: [39-1100/10](#)



Mortar Sand

Code: [39-1170](#)

Alternatives

Product Sheet

www.ele.com
+44 (0) 01525 249 200



Feeding Hopper

Code: [39-1120](#)



Jolting Table 220 - 240 V 50 Hz

Code: [39-1150/01](#)

Product Group: [Jolting Table](#)

Supplied without moulds.

Standards

EN 196-1, EN 413-2, EN 459-2, EN 1744-1, EN 1015-10, EN 1015-11, EN 13454-2, ISO 679, BS 3892-1, BS 4551-1

Further Information

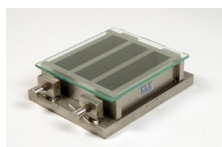
****NOT AVAILABLE FOR SALE IN THE USA****

Accessories



Feeding Hopper

Code: [39-1120](#)



Three-gang Mould

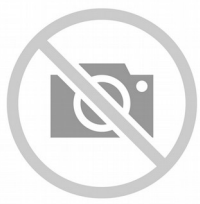
Code: [39-1100](#)

Spares/Consumables



Mortar Sand

Code: [39-1170](#)



Scraper

Code: [39-1130](#)

Alternatives



Jolting Table 220 - 240 V AC 60 Hz

Code: [39-1150/06](#)



Humidity Cabinet ASTM 150 Litre Capacity

Code: [SP39-1401/01](#)

Product Group: [Humidity Cabinet ASTM](#)

- Complete with temperature and humidity chart recorder
- Micro-processor controller for temperature and humidity for precise and reliable control
- Stainless Steel interior with adjustable shelves
- CFC-free polyurethane insulation to provide efficient thermal stability
- 12mm access port

Prior to testing, ASTM C109 requires prisms to be cured for a period of at least 24 hours at 23°C ±2°C, 95 % RH minimum. The prisms are then de-moulded and stored under water for the required curing time, usually 48 hours, 72 hours, 7 and 28 days.

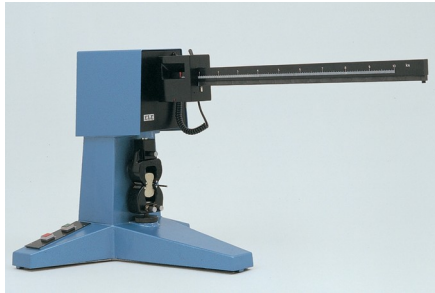
The Humidity Cabinet is built to a high specification and is designed for the early curing of mortar prisms prior to storing under water. Relative humidity up to 98%.

Further Information

for 220-240 V AC 50 Hz 1ph

Specification

Temperature Range	+5 °C to 60 °C
Temperature Control	0.2 °C at 20°C
Temperature Variation	± 0.5 °C at 20°C
Humidity Range	0½-98%
External Dimensions (mm)	1075 × 635 × 660
Internal Dimensions (mm)	590 × 510 × 490
Shelves	4 - Holds 6 x 39-1100 moulds
Shelf Capacity	15kg
Input Power	800 Watt
Weight	100 kg



10kN Flexural/Tensile Testing Machine

Code: 39-7100/01

Product Group: 10 kN Flexural/ Tensile Testing Machine

This single lever machine is designed for flexural tests on 40.1 x 40 x 160 mm mortar prisms and tensile tests on mortar briquettes. The rate of applied loading for flexural testing is to EN196-1. Load is applied by a weight travelling along the beam at a constant rate, driven by a motor/gearbox. Readings are made by means of a cursor visible through a window in the moving weight. Failure of a specimen triggers a switch mechanism and brings the weight to a halt immediately. To prevent overloading, a sensor is incorporated in the weight and automatically stops the machine at its maximum capacity of 10 kN. Supplied complete with flexural and tensile jaws.

Standards

EN 196-1

Further Information

****NOT AVAILABLE FOR SALE IN THE USA****

For 220 - 240 V AC, 50 Hz, 1 ph.



ADR-Auto V2.0 250/25 Cement Machine C/W Compression and Flexural Jigs and Platen Sets

Code: 39-6160/01

Product Group: [ADR-Auto V2.0 250/25 Compression Machine, Activity Index](#)

- 250 kN maximum capacity
- Calibration accuracy to BS EN ISO 7500-1; ASTM E4
- Automatic loading cycle
- 25 kN low capacity frame supplied as standard
- Tests a wide variety of specimen sizes
- Tests mortar, lime, cement and Fly Ash
- Complete with compression/flexural jigs and platen sets
- Supplied with Windows(R) download software as standard

The ADR-Auto 250/25 Machine provides consistent automatic testing of a wide range of specimens. The machine comprises a standard ELE 250/25 kN load frame and ADR-Auto console and incorporates all the features included in the ADR-Auto series concrete testing machines.

As standard the machine is supplied with platens fitted to the load frame, compression jig with 40 mm and 50mm/2 inch square platen sets and flexural jig for testing 40.1 x 40 x 160 mm prisms.

The availability of the 25 kN low capacity load frame as standard extends the test capability of the machine for low strength compression or flexural testing. The automatic loading cycle is controlled by a closed loop microprocessor hydraulic system incorporated with the display in the ADR-Auto console attached to the load frame. A serial output port is built into the system, enabling test data to be stored in memory (up to 500 test results) for subsequent downloading to PC or suitable printer.

Standards

EN 196-1, EN 459-2, EN 1744, EN 1015-11, EN 13454-2, BS 3892-1, BS 4551-1, ASTM C109

Further Information

****NOT AVAILABLE FOR SALE IN THE USA****

For 220 - 240 V AC, 50 Hz, 1 ph.

Accessories



Flexural Jig Assembly

Code: [39-6160](#)



Printer

Code: [37-4859/01](#)



Set of Distance Pieces

Code: [39-6220](#)

Alternatives



ADR-Auto V2.0 250/25 Cement Machine C/W Compression and Flexural Jigs and Platen Sets

Code: [39-6160/06](#)



Set of Distance Pieces

Code: [39-6220](#)

Product Group: [ADR-Auto V2.0 250/25 Compression Machine](#)

Accessory: for testing samples 40mm, 50mm, 70.7mm and 100mm. Note: These items are required when testing above sample sizes NOT using the compression jig.

Further Information

****NOT AVAILABLE FOR SALE IN THE USA****



Flexural Jig Assembly

Code: [39-6160](#)

Product Group: [Cement Testing Accessories](#)

Does come as standard with 39-6160/01 and 39-6160/06.

Jig Is Designed For The Flexural Testing Of 40 X 40 X 160 Mm When Fitted In To ELE Range Of Compression Machines.

Fitted With One Upper And Two Lower Roller Bearers.



Electronic Balance - 8 000 g x 0.1 g

Code: [78-5457/01](#)

Product Group: [Electronic Balances](#)

Further Information

****Not available for sale in the USA****

Specification

Capacity resolution	8000 g x 0.1 g
Pan size	225 x 275 mm
Mains and battery	Yes
Dimensions (w x d x h)	315 x 355 x 110 mm
Weight	4 kg
Weighing units	g, kg, lb, lb:oz, oz
Repeatability	0.1 g



Electronic Balance - 620 g x 0.001 g

Code: [78-5405/01](#)

Product Group: [Electronic Balances](#)

Further Information

****Not available for sale in the USA****

Specification

Capacity resolution	620 g x 0.001 g
Pan size	125 x 125 mm
Mains and battery	No
Dimensions (w x d x h)	220 x 310 x 270 mm
Weight	6 kg
Weighing units	g, mg, ct, GN, N, lb, oz, lb:oz, ozt, dwt, T, custom unit
Readability	0.001 g



Muffle Furnace

Code: [83-4170/01](#)

Product Group: [Furnaces](#), [Loss-on-Ignition](#),
[Loss-on-Ignition](#)

Standards

EN 196-2, EN 459-2, EN 13454-2, BS 1016-4, ISO 344, ISO 1171, ASTM D2361, ASTM D2795, ASTM D3714

Specification

External Dimensions (l x w x h)	545 x 385 x 400 mm
Work chamber dimensions (l x w x h)	300 x 200 x 120 mm
Internal volume	6.9 litres
Maximum temperature	1200 °C
Electrical supply	220 – 240 V AC, 50 - 60 Hz, 1 ph
Power supply	3500 W
Weight	130 kg

Spares/Consumables



Controller, for use in 83-4170/01

Code: [83-4170/11](#)



Element heating for use in 83-4170

Code: [83-4170/14](#)



Element/Chamber complete, heating, for use in 83-4170/01

Code: [83-4170/12](#)



Refractory brick for 83-4170/01

Code: [83-4170/13](#)



Thermostat, KGrade, 370 long, dia 2.5, for 83-4170/01

Code: [83-4170/10](#)

Alternatives



Heat of Hydration Apparatus

Code: [38-4600/06](#)



Heat of Hydration Apparatus

Code: [38-4600/01](#)



Rotatest 1500

Code: [45-3810/01](#)



Rotatest 3000

Code: [45-3815/01](#)