



IF IT'S WORTH BUILDING, IT'S WORTH TESTING

This wishlist was generated on 08/02/2017, and contains the following Products:

---

46-5295/01

**Semi-Automatic Penetrometer**

---

46-5340/C

**Penetration Needle**

---

46-5800

**Transfer Dish**

---

46-5861

**Penetration Tin**

---

46-5860

**Penetration Tin**

---

46-5500/01

**Constant Temperature Bath 21 - 56°C**

---

81-0518

**Timer Clock**

---

46-4605

**BS/EN Ring and Ball Apparatus**

---

46-4825/01

**Magnetic Stirrer**

---

82-5272

**Thermometer**

---

82-5274

**Thermometer**

---

45-3815/01

**Rotatest 3000**

---

46-3310/01

**Cleveland Flash Cup Apparatus**

---

23-6191/01

**Bench-Mounting Mixer 5 Litre Capacity Complete with Bowl Beater and Whisk.  
220-240V 50Hz 1Ph.**

---

45-5580/01

**Isomantle Electric Heater**

---

82-5440/10

**Thermocouple Wire**

---

81-3060

**Sample Container - Tinned Steel 10 litres**

---

81-3040

**Sample Container - Tinned Steel 2.5 litres**

---

23-1543

**Stillson Wrench Size 14.**

---

23-1547

**Handle and T Piece for Use with EL23-1541.**

---

23-1587

**Jarring Link for Driving Sample Tubes.**

---

23-1617

**Spiral Auger 40mm Diameter. One Piece Model**

---

23-1501

**100mm Dia Soil Auger Head**

---

23-1504

**150mm Dia Soil Auger Head**

---

23-1525

**50mm Dia Dutch Soil Auger Head.**

---

23-1517

**150mm Dia Gravel Auger Head.**

---

23-1541

**Extension Rod 27mm Diameter 1m Long. for Use with Auger Heads**

---

23-1577

**38mm Diameter Sample Tube 230mm Long Complete with End Caps.**

---

23-3425

## Large Capacity Sample Splitter.

---

46-4150/01

## Rolling Thin-Film Oven 220-240V 50/60 Hz

---



## Semi-Automatic Penetrometer

Code: [46-5295/01](#)

Product Group: [Penetration Test](#)

As 46-5290 but incorporates Digital Automatic Controller which releases the needle assembly. The time set is displayed by a bright, easy to read display.

## Standards

BS 2000-49, EN 1426, EN 13179-2, ASTM D5, AASHTO T49, IP 49

## Further Information

**\*\*NOT AVAILABLE FOR SALE IN THE USA\*\***

## Accessories



### Constant Temperature Bath 21 - 56°C

Code: [46-5500/01](#)



### Penetration Needle

Code: [46-5340/C](#)



### Penetration Needle

Code: [46-5360/10](#)



## Penetration Tin

Code: [46-5861](#)



## Transfer Dish

Code: [46-5800](#)

## Spares/Consumables



## ASTM (Non-Certified) Penetration Needle

Code: [46-5290/10](#)



## Penetration Needle

Code: [46-5340/C](#)

Product Group: [Penetration Test](#)

Hardened steel, supplied with an UKAS verification certificate. For testing to BS 2000-49 and ASTM D5. (Pack contains 1 needle only).

## Standards

BS 2000-49, EN 1426, EN 13179-2, ASTM D5, AASHTO T49, IP 49

## Further Information

**\*\*NOT AVAILABLE FOR SALE IN THE USA\*\***



## Transfer Dish

Code: [46-5800](#)

Product Group: [Bitumen Penetration Test](#), [Asphalt Penetrometer](#), [Penetration Test](#)

For use with ELE Penetrometer 46-5295.

## Standards

BS 2000-49, EN 1426, EN 13179-2, ASTM D5, AASHTO T49, IP 49





## Penetration Tin

Code: [46-5861](#)

Product Group: [Penetration Test](#)

For penetrations below 200, approximately 55 mm diameter x 35 mm deep.

## Standards

BS 2000-49, EN 1426, EN 13179-2, ASTM D5, AASHTO T49, IP 49

## Further Information

**\*\*NOT AVAILABLE FOR SALE IN THE USA\*\***



## Penetration Tin

Code: [46-5860](#)

Product Group: [Penetration Test](#)

For penetrations between 200 and 350,  
approximately 70 mm diameter x 45 mm deep.

## Standards

BS 2000-49, EN 1426, EN 13179-2, ASTM D5, AASHTO T49, IP 49

## Further Information

**\*\*NOT AVAILABLE FOR SALE IN THE USA\*\***



## Constant Temperature Bath 21 - 56°C

Code: [46-5500/01](#)

Product Group: [Penetration Test](#)

A bench mounting bath specially designed for the conditioning of bitumen samples prior to penetration tests. Incorporating a highly accurate thermostat, the bath maintains a temperature between 21 and 56°C  $\pm$  0.1°C (at ambient). An integral cover and deep tray for penetration testing are supplied as standard.

## Further Information

**\*\*Not available for sale in the USA\*\***



## Timer Clock

Code: [81-0518](#)

Product Group: [Rice Test Vibrator, Watches and Clocks](#)

Accessory

## Standards

EN 12697-5

## Further Information

**\*\*NOT AVAILABLE FOR SALE IN THE USA\*\***

## Accessories

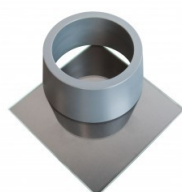
### ASTM Initial Set Needle

Code: [38-2620](#)



### ASTM Vicat Mould

Code: [38-2660](#)



## EN Initial and Final Set Needle

Code: [38-2110](#)



## Vibrating Hammer

Code: [47-0455/01](#)

## Spares/Consumables

### Consistency Plunger

Code: [38-2010/10](#)

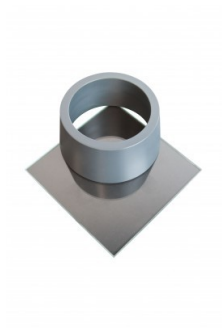


## Alternatives

### ASTM Initial Set Needle

Code: [38-2620](#)





## ASTM Vicat Mould

Code: [38-2660](#)



## EN Initial and Final Set Needle

Code: [38-2110](#)



## Vibrating Hammer

Code: [47-0455/01](#)



## BS/EN Ring and Ball Apparatus

Code: [46-4605](#)

Product Group: [Ring and Ball Apparatus](#)

With 2 shouldered pattern rings, 2 ball-centring guides and 2 balls. The apparatus has a support frame and is retained in a heat resistant container.

## Standards

EN 1427, BS 2000-58, UNI 4161, UNE 7111, DIN 52011, NFT66-008, AASHTO T53, ASTM D36, BS 2000

## Further Information

**\*\*NOT AVAILABLE FOR SALE IN THE USA\*\***

## Accessories



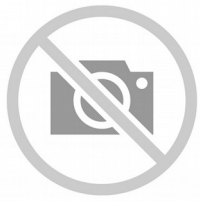
### Magnetic Stirrer

Code: [46-4825/01](#)



### Thermometer

Code: [82-5272](#)



## Thermometer

Code: 82-5274





## Magnetic Stirrer

Code: [46-4825/01](#)

Product Group: [Ring and Ball Apparatus](#)

Utilises a rotating magnetic field to induce variable speed stirring action. A built-in regulating transformer provides fine temperature control of liquid up to a maximum temperature of +150°C. The unit is suitable for use with the Ring and Ball Apparatus.

## Standards

EN 1427, BS 2000-58

## Further Information

**\*\*NOT AVAILABLE FOR SALE IN THE USA\*\***



## Thermometer

Code: [82-5272](#)

Product Group: [Ring and Ball Apparatus, Non Hazardous Glass Thermometers](#)

Mercury-free with a range of -10.0°C to + 210.0°C and graduated every 1°C. Immersion up to 76 mm

## Standards

EN 1427, BS 2000-58

## Further Information

**\*\*NOT AVAILABLE FOR SALE IN THE USA\*\***



## Thermometer

Code: [82-5274](#)

Product Group: [Ring and Ball Apparatus, Non Hazardous Glass Thermometers](#)

Mercury-free with a range of -10.0°C to + 210.0°C and graduated every 1°C. Total immersion possible.

## Standards

EN 1427, BS 2000-58

## Further Information

**\*\*NOT AVAILABLE FOR SALE IN THE USA\*\***



## Rotatest 3000

Code: [45-3815/01](#)

Product Group: [Asphalt Centrifuge Extractors](#)

Centrifuge extractor used to determine the quantitative amount of bitumen in bituminous paving mixtures. Variable speed control from 0 to 3600 rpm through the front panel mounted control knob and brake control included for rapid deceleration.

Precision machined aluminium removable cover with integral cup for adding solvent, with sealed cast aluminium housing.

For 220 V AC, 50 - 60 Hz, 1ph.

## Standards

EN 12697-1, ASTM D2172, AASHTO T164

## Further Information

**\*\*NOT AVAILABLE FOR SALE IN THE USA\*\***

3000 g capacity. Supplied with 100 Filter Discs. For 220 V AC, 50 - 60 Hz, 1ph.

## Accessories



### Bowl - 2.5 litre

Code: [81-5020](#)



### Desiccator - Non-vacuum

Code: [82-2100](#)



## Evaporating Dish - 100 x 40 mm

Code: [82-1970](#)



## Filter Discs Pack of 100

Code: [45-3807](#)



## Hotplate

Code: [78-2950/01](#)



## Measuring Cylinder - Glass 100 ml

Code: [82-0380](#)



## Measuring Cylinder - Glass 1000 ml

Code: [82-0500](#)



## Sample Tray - 306 x 306 x 38 mm

Code: [81-4020](#)

---



## Silica Gel

Code: [82-7091](#)

---



## Volumetric Flask - 100 ml

Code: [82-1000](#)

---



## Volumetric Flask - 1000 ml

Code: [82-1060](#)

---

## Alternatives



## Muffle Furnace

Code: [83-4170/01](#)

---

# Product Sheet

[www.ele.com](http://www.ele.com)  
+44 (0) 01525 249 200



## Rotatest 1500

Code: [45-3810/01](#)



## Cleveland Flash Cup Apparatus

Code: [46-3310/01](#)

Product Group: [Cleveland Flash Cup Apparatus](#)

The ELE Semi-Automatic Cleveland Open Cup flashpoint Tester is equipped with an electrically heated cup (with a variable control to set temperature rise rate), a button operated and electrically driven sweep arm and a test flame for use on natural gas. Bench mounted, the unit is incorporated in an easy to clean stainless steel case.

## Standards

BS 2000-36, EN ISO 2592, ASTM D92, IP 36

## Further Information

**\*\*NOT AVAILABLE FOR SALE IN THE USA\*\***

For 220 - 240 V AC, 50 - 60 Hz, 1 ph.

## Specification

Temperature Range	Ambient to 400°C
Power	500 W maximum
Ramp rate	Variable, manually controlled
Voltage	220/240 V, 50/60 Hz
Size (HxWxD)	33 x 31 x 29 cm
Weight	6.5 kg





## Bench-Mounting Mixer 5 Litre Capacity Complete with Bowl Beater and Whisk. 220-240V 50Hz 1Ph.

Code: [23-6191/01](#)

Product Group: [Sample Mixers](#), [Mixing](#), [Sample Mixers](#)

The mixer has two electrically switched mixing speeds which obviates the need to switch off during speed selection. The mixing head comprises a beater which contra-rotates about a central shaft using planetary gearing. A lever-acting lifting device facilitates the insertion and removal of the bowl. This mixer is suitable for the mixing of soil samples, mortar, bituminous mixtures and associated materials where comparatively small samples are being prepared. Supplied with stainless steel bowl, beater and whisk.

## Standards

BS 598-107, BS 1377-1, BS 1924-1

## Further Information

**\*\*NOT AVAILABLE FOR SALE IN THE USA\*\***

## Specification

Dimensions	545 x 380 x 550 mm
Beater Speeds (rpm) low, intermediate, high	136, 281, 580
Central shaft speeds (rpm) low, high	60, 124, 255
Rated power	500 W
Weight	20.2 kg

## Accessories



## Isomantle Electric Heater

Code: [45-5580/01](#)

## Spares/Consumables



### **Stainless Steel Bowl 4.73 Litres.**

Code: [23-6191/10](#)



## Isomantle Electric Heater

Code: 45-5580/01

Product Group: Sample Mixers, Mixing, Sample Mixers

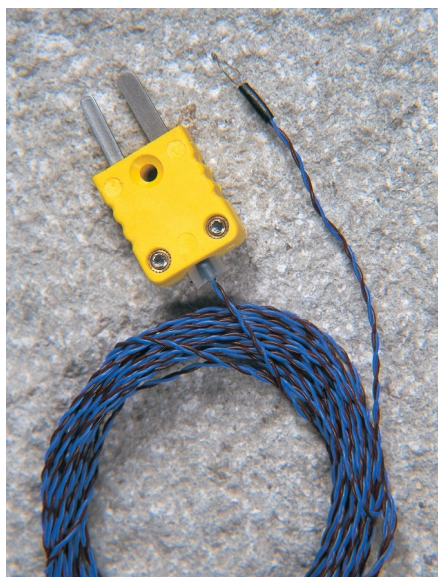
For use with 23-6191 Bench Mounting Mixer.

## Standards

EN 12697-35

## Further Information

\*\*NOT AVAILABLE FOR SALE IN THE USA\*\*



## Thermocouple Wire

Code: [82-5440/10](#)

Product Group: [Hand-held Digital Thermometers](#)

Accessory. 3 metre length, suitable for 82-5440 Digital Thermometer.

The thermocouple is NiCr/NiAi PTFE covered with a naked exposed junction. Supplied with a coupling unit the maximum reading is 250°C with a tip diameter of 0.5 mm. (Pack of 5).

## Further Information

**\*\*NOT AVAILABLE FOR SALE IN THE USA\*\***



## Sample Container - Tinned Steel 10 litres

Code: [81-3060](#)

Product Group: [Moisture Content Tin and Sample Containers](#)

### Further Information

**\*\*NOT AVAILABLE FOR SALE IN THE USA\*\***



## Sample Container - Tinned Steel 2.5 litres

Code: [81-3040](#)

Product Group: [Moisture Content Tin and Sample Containers](#)

### Further Information

**\*\*NOT AVAILABLE FOR SALE IN THE USA\*\***

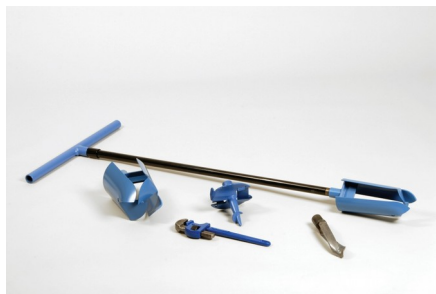


## Stillson Wrench Size 14.

Code: [23-1543](#)

Product Group: [Extension Rods, Handles and Tools](#)

Size 14, for use with 23-1541. Two required.

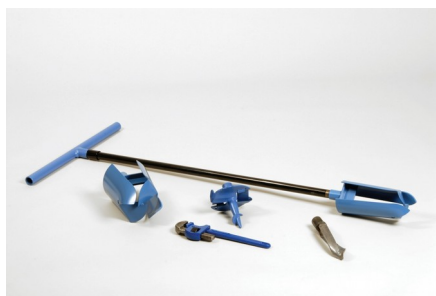


## Handle and T Piece for Use with EL23-1541.

Code: [23-1547](#)

Product Group: [Extension Rods, Handles and Tools](#)





## Jarring Link for Driving Sample Tubes.

Code: [23-1587](#)

Product Group: [Extension Rods, Handles and Tools](#)

For driving sample tubes

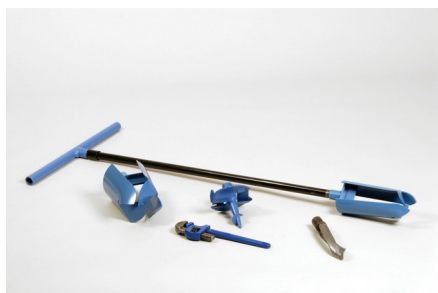


## Spiral Auger 40mm Diameter. One Piece Model

Code: [23-1617](#)

Product Group: [Soil and Gravel Auger Heads](#)

40 mm diameter x 200 mm long with rod and T-piece attached. Overall nominal length 1250 mm.



## 100mm Dia Soil Auger Head

Code: [23-1501](#)

Product Group: [Soil and Gravel Auger Heads](#)

Constructed of heavy-duty steel plates; partly interlocked at the cutting end and suitable for cohesive soils.

## Accessories



## 38mm Diameter Sample Tube 230mm Long Complete with End Caps.

Code: [23-1577](#)



## Extension Rod 27mm Diameter 1m Long. for Use with Auger Heads

Code: [23-1541](#)



## Handle and T Piece for Use with EL23-1541.

Code: [23-1547](#)



## Jarring Link for Driving Sample Tubes.

Code: [23-1587](#)



## Spiral Auger 40mm Diameter. One Piece Model

Code: [23-1617](#)



## Stillson Wrench Size 14.

Code: [23-1543](#)

---

### Alternatives



## 150mm Dia Gravel Auger Head.

Code: [23-1517](#)



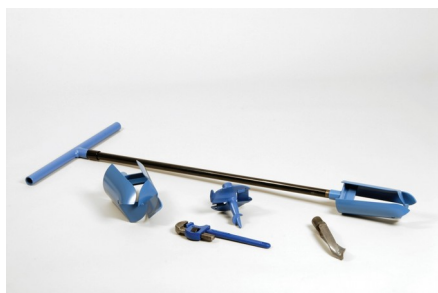
## 150mm Dia Soil Auger Head

Code: [23-1504](#)



## 50mm Dia Dutch Soil Auger Head.

Code: [23-1525](#)



## 150mm Dia Soil Auger Head

Code: [23-1504](#)

Product Group: [Soil and Gravel Auger Heads](#)

Constructed of heavy-duty steel plates; partly interlocked at the cutting end and suitable for cohesive soils.

## Accessories



## 38mm Diameter Sample Tube 230mm Long Complete with End Caps.

Code: [23-1577](#)



## Extension Rod 27mm Diameter 1m Long. for Use with Auger Heads

Code: [23-1541](#)



## Handle and T Piece for Use with EL23-1541.

Code: [23-1547](#)



## Jarring Link for Driving Sample Tubes.

Code: [23-1587](#)



## Spiral Auger 40mm Diameter. One Piece Model

Code: [23-1617](#)



## Stillson Wrench Size 14.

Code: [23-1543](#)

---

### Alternatives



## 100mm Dia Soil Auger Head

Code: [23-1501](#)



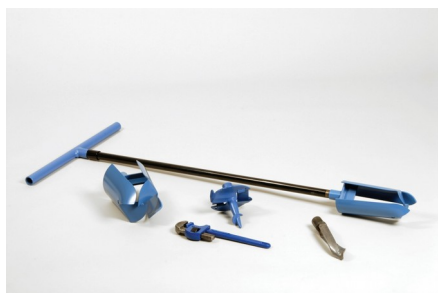
## 150mm Dia Gravel Auger Head.

Code: [23-1517](#)



## 50mm Dia Dutch Soil Auger Head.

Code: [23-1525](#)



## 50mm Dia Dutch Soil Auger Head.

Code: [23-1525](#)

Product Group: [Soil and Gravel Auger Heads](#)

Constructed of heavy-duty steel plates; partly interlocked at the cutting end and suitable for fine, silty sand.

## Accessories



## 38mm Diameter Sample Tube 230mm Long Complete with End Caps.

Code: [23-1577](#)



## Extension Rod 27mm Diameter 1m Long. for Use with Auger Heads

Code: [23-1541](#)



## Handle and T Piece for Use with EL23-1541.

Code: [23-1547](#)



## Jarring Link for Driving Sample Tubes.

Code: [23-1587](#)



## Spiral Auger 40mm Diameter. One Piece Model

Code: [23-1617](#)



## Stillson Wrench Size 14.

Code: 23-1543

---

### Alternatives



## 100mm Dia Soil Auger Head

Code: 23-1501



## 150mm Dia Gravel Auger Head.

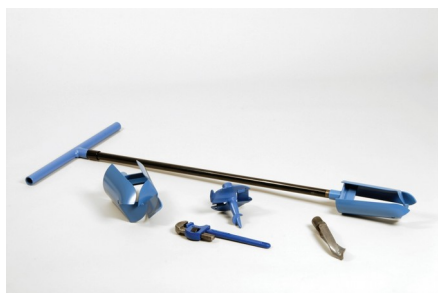
Code: 23-1517



## 150mm Dia Soil Auger Head

Code: 23-1504





## 150mm Dia Gravel Auger Head.

Code: [23-1517](#)

Product Group: [Soil and Gravel Auger Heads](#)

Comprises one piece steel casting with a spiral point and two plates designed to close when lifting samples from the borehole; suitable for gravel and sand.

## Accessories



## 38mm Diameter Sample Tube 230mm Long Complete with End Caps.

Code: [23-1577](#)



## Extension Rod 27mm Diameter 1m Long. for Use with Auger Heads

Code: [23-1541](#)



## Handle and T Piece for Use with EL23-1541.

Code: [23-1547](#)



## Jarring Link for Driving Sample Tubes.

Code: [23-1587](#)



## Spiral Auger 40mm Diameter. One Piece Model

Code: [23-1617](#)



## Stillson Wrench Size 14.

Code: 23-1543

---

### Alternatives



## 100mm Dia Soil Auger Head

Code: 23-1501



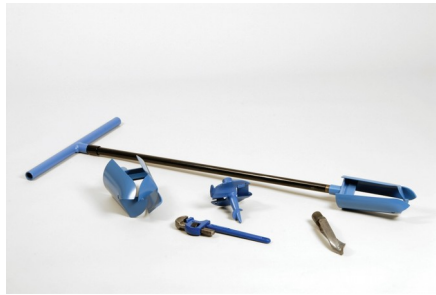
## 150mm Dia Soil Auger Head

Code: 23-1504



## 50mm Dia Dutch Soil Auger Head.

Code: 23-1525



## Extension Rod 27mm Diameter 1m Long. for Use with Auger Heads

Code: [23-1541](#)

Product Group: [Extension Rods, Handles and Tools](#)

With tube connector, constructed of steel tubing  
approximately 1 metre long.



## **38mm Diameter Sample Tube 230mm Long Complete with End Caps.**

Code: [23-1577](#)

Product Group: [Extension Rods, Handles and Tools](#)

Supplied without Adaptor, but with two end caps



## Large Capacity Sample Splitter.

Code: 23-3425

Product Group: Large Capacity Sample Splitter, Large Sample Splitter

The splitter is designed for the reduction of test samples which are too large in volume to be conveniently handled. It divides samples so that half is representative of the original total sample and handles material up to 6 inches in particle size.

The lever-actuated unit is constructed of heavy gauge welded steel with a hopper which holds up to 1 cuft. The single splitter chute provides wide flexibility in sizes of opening and adjustment is provided for chutes of 0.5, 1.5, 2, 3, 4 or 6 inch by positioning of the chute bars. Overall height is approximately 1 meter. Hopper size 735 mm long x 480 mm wide (approx).

## Further Information

Complete with 2 material pans and a bag-loading chute.

## Specification

Capacity	1 cu. ft. (0.028 m3); for sand sizes up to 4" (102 mm).
Hopper	Lever-actuated, clamshell design.
Chute Bars	48 aluminum bars, 1/2" (13 mm) width.
Chute Area	24 " (610 mm) overall width.
Chute Openings	Adjustable; 1/2", 1", 1-1/2", 2", 3", 4", or 6".
Frame	Welded, heavy-gage steel.
Chute Attachment	Replaces pan to allow sample collection in bag; 28-1/4" l. x 7"w. x 5-1/2" h. (718 x 178 x 140 mm).
Material Pans	Two included; 25 -3/4" l. x 9" w. x 6-1/2" h. (654 x 229 x 165 mm).
Overall Dimensions	29" l. x 19" w. x 39" h. (737 x 483 x 999 mm).
Weight	Shpg. 142 lbs. (64 kg).

## Accessories



## Sample Bag - 10" x 18" (254 x 457 mm)

Code: [23-1420](#)



## Sample Bag - 17" x 32" (432 x 813 mm)

Code: [23-1422](#)

## Alternatives



## Large Capacity Sample Splitter.

Code: [23-3425](#)



## Sample Splitter (Riffle Box) - 14 chutes, 1/2" (13 mm) chute width

Code: [23-3052](#)



## Sample Splitter (Riffle Box) - 14 chutes, 3/4" (19 mm) chute width

Code: [23-3102](#)



## Sample Splitter (Riffle Box) - 16 chutes, 1" (25 mm) chute width

Code: 23-3152



## Sample Splitter (Riffle Box) - 8 chutes, 2-1/2" (64 mm) chute width

Code: 23-3352



## Sample Splitter (Riffle Box) - 8 chutes, 2" (51 mm) chute width

Code: 23-3302



## Rolling Thin-Film Oven 220-240V 50/60 Hz

Code: 46-4150/01

Product Group: [Asphalt and Bitumen Ovens](#)

The Rolling Thin-Film Oven (RTFO) procedure provides simulated short term aged asphalt binder for physical property testing. Asphalt binder is exposed to elevated temperatures to simulate manufacturing and placement ageing. The RTFO also provides a quantitative measure of the volatiles lost during the ageing process.

The exterior is constructed from sheet steel finished in an easy clean powder coated paint and the interior chamber is made from stainless steel.

The control system comprises of a microprocessor digital controller and overheat thermostat with calibrated scale and tamper-proof lock.

### Further Information

- Complies to the requirements of ASTM D2872
- Internal dimensions (mm): 380 high x 480 wide x 440 deep
- External dimensions (mm): 800 high x 710 wide x 660 deep (add 40mm for door handle)
- Double wall construction with high density thermal insulation
- Non-rusting grade 304 stainless steel interior
- Easy clean powder painted steel exterior in light grey (RAL 7035) textured finish
- Top mounted fan constructed with an air plenum as described in ASTM D2872
- Fitted with a squirrel-type fan blade for better uniformity of air and temperature distribution
- Equipped with air jet for blowing heating air into each bottle at its lowest point of travel
- Base mounted elements
- Vented to atmosphere
- Single front opening, side hinged door with positive quarter turn latching mechanism
- Double glazed window in door for viewing the test chamber

Top mounted controls comprise:

- Dual display microprocessor digital control
- Independent overheat thermostat
- Mains switch
- Flow meter to control air flow
- Indicator lamps
- 1500 watts
- Supplied with built-in 305mm diameter vertical circulator carriage for 8 sample containers
- Glass samples rotate at 15 rpm  $\pm$  0.2rpm (glass containers supplied separately)
- Temperature is controlled and pre-set at 163°C  $\pm$  1°C

### Specification

Max Temp (°C)	163°C $\pm$ 1°C (preset)
Dimensions: Internal (HxWxD)	380 x 480 x 440 mm



# Product Sheet

[www.ele.com](http://www.ele.com)  
+44 (0) 01525 249 200



Dimensions: External (HxWxD)	800 x 710 x 660 mm
Insulation	Double wall
Internal material	304 stainless steel
Max power (W)	1500