



IF IT'S WORTH BUILDING, IT'S WORTH TESTING

This wishlist was generated on 20/02/2017, and contains the following Products:

38-2012

Vicat Apparatus

38-2660

ASTM Vicat Mould

38-2620

ASTM Initial Set Needle

38-1200

Le Chatelier Flask

38-3005

Le Chatelier Mould

38-3200

Extensibility of Mould Apparatus BS

82-1840

Measuring Cylinder - Plastic 100 ml

82-2660

Funnel



Vicat Apparatus

Code: [38-2012](#)

Product Group: [Vicat Apparatus](#)

Includes Vicat needle and mould.

Standards

ASTM C91, ASTM C187, ASTM C191, AASHTO T129, AASHTO T131

Specification

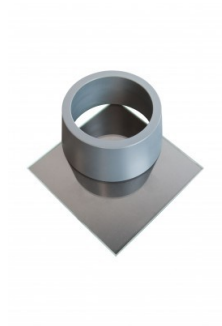
Plunger	Reversible; 10 mm diam. at one end and 1 mm diam. needle at other end; combined weight 300 grams.
Needle	Steel; mounted in plunger; 1 mm diam. x 50 mm long.
Scale	Graduated in millimeters.
Mold	Hard rubber; 70 mm base diam. x 60 mm top diam. x 40 mm h.
Weight	Net 4 lbs. (1.8 kg).

Accessories

ASTM Initial Set Needle

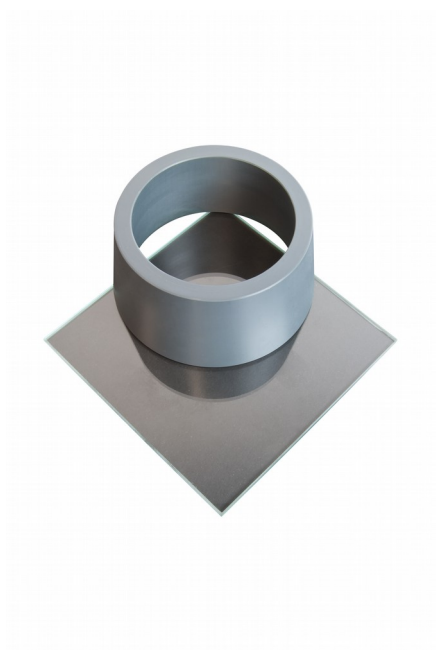
Code: [38-2620](#)





ASTM Vicat Mould

Code: [38-2660](#)



ASTM Vicat Mould

Code: [38-2660](#)

Product Group: [Vicat Apparatus](#), [Vicat Method](#),
[Automatic Vicat](#)

Accessory: manufactured from non-absorbent plastic
and supplied complete with a glass base plate.

Standards

ASTM C187, ASTM C191

Accessories

ASTM Initial Set Needle

Code: [38-2620](#)



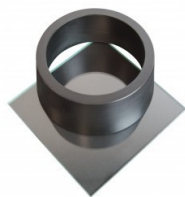
EN Initial and Final Set Needle

Code: [38-2110](#)



EN Vicat Mould

Code: [38-2300](#)



Engineer's Steel Rule

Code: [81-0805](#)



Harvard Trip Balance

Code: [78-7090](#)



Vicat Mould

Code: [38-2200](#)





Weights for Harvard Trip Balance

Code: [78-7110](#)

Spares/Consumables



Consistency Plunger

Code: [38-2010/10](#)

Alternatives



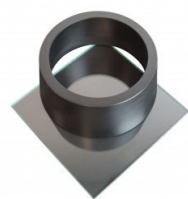
ASTM Initial Set Needle

Code: [38-2620](#)



EN Initial and Final Set Needle

Code: [38-2110](#)



EN Vicat Mould

Code: [38-2300](#)



Engineer's Steel Rule

Code: [81-0805](#)



Harvard Trip Balance

Code: [78-7090](#)



Vicat Mould

Code: [38-2200](#)



Weights for Harvard Trip Balance

Code: [78-7110](#)



ASTM Initial Set Needle

Code: [38-2620](#)

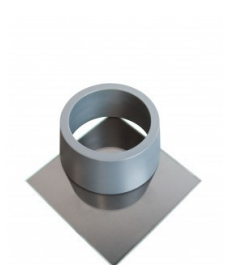
Product Group: [Vicat Apparatus, Vicat Method](#)

1 mm diameter.

Standards

ASTM C187, ASTM C191

Accessories



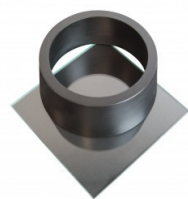
ASTM Vicat Mould

Code: [38-2660](#)



EN Initial and Final Set Needle

Code: [38-2110](#)



EN Vicat Mould

Code: [38-2300](#)



Engineer's Steel Rule

Code: [81-0805](#)



Harvard Trip Balance

Code: [78-7090](#)



Vicat Mould

Code: [38-2200](#)



Weights for Harvard Trip Balance

Code: [78-7110](#)

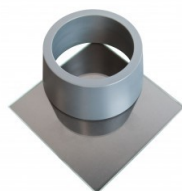
Spares/Consumables



Consistency Plunger

Code: [38-2010/10](#)

Alternatives



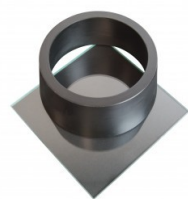
ASTM Vicat Mould

Code: [38-2660](#)



EN Initial and Final Set Needle

Code: [38-2110](#)



EN Vicat Mould

Code: [38-2300](#)



Engineer's Steel Rule

Code: [81-0805](#)



Harvard Trip Balance

Code: [78-7090](#)



Vicat Mould

Code: [38-2200](#)



Weights for Harvard Trip Balance

Code: [78-7110](#)



Le Chatelier Flask

Code: [38-1200](#)

Product Group: [Le Chatelier Flask, Specific Gravity \(relative density\) of Hydration Cement](#)

For determining the density of hydraulic cement and lime, supplied complete with calibration certificate. Capacity 250ml. Graduated from 0 to 1ml and from 18 to 24ml graduations. Accurate to 0.05ml.

Standards

EN 196-6, ASTM C128, ASTM C188, E 694, AASHTO T133

Specification

Graduations

Zero mark represents 250 ml, the capacity of the large bulb; neck graduations from 0-1 ml in 0.1 ml divisions with two extra 0.1 ml graduations above the 1.0 and below the 0 marks; bulb portion of neck holds 17 ml; top portion of neck graduated from 18-24 ml in 0.1 ml divisions; 24 ml capacity.

Stopper

Ground glass.

Weight

Net 8 oz. (227 g).

Accessories



Chattaway Spatula 125 mm

Code: [81-0180](#)



Electronic Balance - 620 g x 0.001 g

Code: [78-5405/01](#)



Water Bath - 12 litres

Code: [82-8500/01](#)



Le Chatelier Mould

Code: 38-3005

Product Group: General Expansion of Dry Hydrated Lime by the Le Chatelier Method, Soundness of Cement Paste by the Le Chatelier Method, Soundness

Comprising a split cylinder fitted with two indicator stems. The mould is supplied complete with two glass plates and a weight 100 g \pm 10 g. Three moulds required for each test.

Standards

BS 6463, EN 196-3, EN 459-2

Further Information

NOT AVAILABLE FOR SALE IN THE USA

Accessories



Extensibility of Mould Apparatus BS

Code: 38-3200



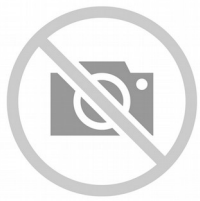
Extensibility of Mould Apparatus EN

Code: 38-3205



Le Chatelier Water Bath

Code: 38-3420/01



Tamping Rod

Code: [38-3300](#)



Trowel - Gauging

Code: [81-0335](#)



Extensibility of Mould Apparatus BS

Code: [38-3200](#)

Product Group: [General Expansion of Dry Hydrated Lime by the Le Chatelier Method](#)

Conforms to BS 6463. The unit comprises a metal sleeve with a hook and set screw to fit over one of the mould pointers, and a clamp to fit onto the other pointer of the mould. Supplied complete with one weight 100 g \pm 1 g.

Standards

EN 196-3

Further Information

****NOT AVAILABLE FOR SALE IN THE USA****

Accessories



Le Chatelier Water Bath

Code: [38-3420/01](#)



Tamping Rod

Code: [38-3300](#)



Trowel - Gauging

Code: [81-0335](#)

Alternatives



Le Chatelier Water Bath

Code: [38-3420/01](#)



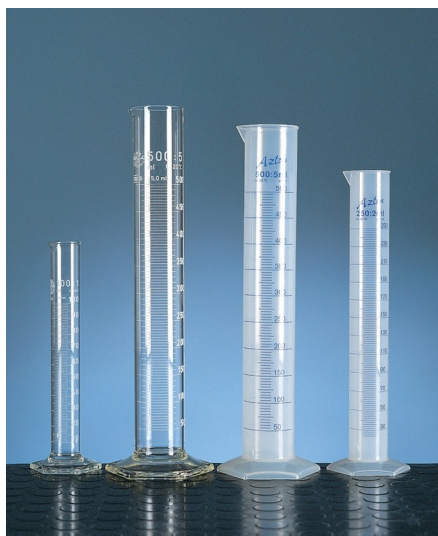
Tamping Rod

Code: [38-3300](#)



Trowel - Gauging

Code: [81-0335](#)



Measuring Cylinder - Plastic 100 ml

Code: [82-1840](#)

Product Group: [Measuring Cylinders, BS](#)

Plastic with spout, graduated to BS 5404.

Further Information

****NOT AVAILABLE FOR SALE IN THE USA****



Funnel

Code: [82-2660](#)

Product Group: [Funnels and Flasks](#)

Polythene, 200 mm diameter.

Further Information

****NOT AVAILABLE FOR SALE IN THE USA****