



IF IT'S WORTH BUILDING, IT'S WORTH TESTING

This wishlist was generated on 22/02/2017, and contains the following Products:

25-7670

Filter Paper Drain 100mm/4 inch Diameter. Pack of 50.

27-1641

Volume Change Transducer Assembly 80ml Capacity Maximum Working Pressure 1700KPa

26-1746

Bladder-Type Air/Water Pressure Assembly. 1000 Kpa Maximum Working Pressure.

25-3650

Unconfined Compression Platens. for Use on Ele Load Frames Max Sample Dia 95mm.

78-0260

Clamped Boss Load Ring - 4.5 kN

25-5130

Two Part Split Mould 38mm

25-5120

Two-Way Split Former 38mm/1.5 Inch Diameter.

79-5610

8in Dia ASTM Sieve 37.5mm Stainless Steel Mesh.

79-5580

8in Dia ASTM Sieve 25.0mm Stainless Steel Mesh.



Filter Paper Drain 100mm/4 inch Diameter. Pack of 50.

Code: [25-7670](#)

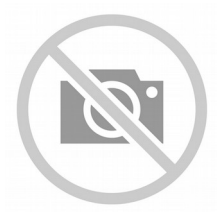
Product Group: [Accessories for CU/CU effective stress, Filter Paper Drains](#)

Filter paper drain 100 mm diameter (Pack of 50).

Standards

ASTM D2850, ASTM D4767, ASTM D7181, AASHTO T296, AASHTO T297

Accessories



1.4" Filter Paper Drains

Code: [25-4880](#)



Filter Paper Drain 70mm/2.8 inch Diameter. Pack of 50.

Code: [25-6580](#)

Alternatives



1.4" Filter Paper Drains

Code: [25-4880](#)

Product Sheet

www.ele.com
+44 (0) 01525 249 200



Filter Paper Drain 70mm/2.8 inch Diameter. Pack of 50.

Code: [25-6580](#)



Volume Change Transducer Assembly 80ml Capacity Maximum Working Pressure 1700KPa

Code: 27-1641

Product Group: [Volume Change Measurement](#),
[Tri-Flex 2 One-Cell Permeability Test System](#), [Volume Change Measurement](#), [Volume Change Transducer](#)

- Reversing valves to increase capacity
- Steel case for wall mounting and access to piping
- Supplied complete with calibration certificate

The Volume Change Transducer provides continuous measurements of volume change during the triaxial test. The assembly includes a valve to reverse the flow through the unit, providing increased capacity.

Specification

Maximum Pressure	250 psi (1,700 kPa).
Excitation	10V DC.
Output	1.25 Volts full range.
Capacity	80 cc x 0.1 cc sensitivity.
Case	Steel; hinged for access to piping.
Connector	5-Pin DIN type.
Overall Dimensions	9" w. x 7" d. x 14 -1/2" h. (229 x 178 x 368 mm).
Weight	Net 11 lbs. (5 kg).



Bladder-Type Air/Water Pressure Assembly. 1000 Kpa Maximum Working Pressure.

Code: 26-1746

Product Group: [Air/Water Pressure Systems - up to 1000 kPa](#)

With transparent plastic chamber for operating continuously at pressures up to 1000 kPa. A length of tubing is provided for connecting the air/water cylinder outlet to a pressure measuring system.

- Used to supply hydraulic pressure from a pneumatic pressure source.
- Prevents air entering the hydraulic pressure system.
- Maximum working pressure 1000kpa.
- Supplied with connectors and tubing for fitting to pressure measuring systems.

Accessories



Nylon Tubing 30 Metre Length.

Code: 26-1769

Spares/Consumables



Pneumatic Pressure Reducing Panel. Provides Two Independent Pressure Outlets 1000 kPa Max.

Code: 26-1760



Replacement Bladder Wide Neck (38mm Id)

Code: 26-1746/10



Unconfined Compression Platens. for Use on Ele Load Frames Max Sample Dia 95mm.

Code: [25-3650](#)

Product Group: [N/A](#)

Standards

ASTM D2166, AASHTO T208, BS 1377, BS 1924, EN 13286-47, ASTM D1883, AASHTO T193



Clamped Boss Load Ring - 4.5 kN

Code: 78-0260

Product Group: Clamped Boss Load Rings, Digital Tritest 50 Load Frame, Load Measurement, Load Measurement, Direct/Residual Shear Apparatus, Proving Rings, Load Measurement

Specification

Capacity: kN, kgf, lbf	4.5, 450, 1000
Typical Design sensitivity: N/div, kgf/div, lbf/div	3.0, 0.30, 0.66
Overall height mm	248
Approx weight kg	3.5
Capacity - lbf	1,000
Capacity - kN	4.5
Capacity - kgf	450
Typical Design Sensitivity - lbf/div	0.66
Typical Design Sensitivity - kN/div	3
Typical Design Sensitivity - Kg/div	0.3
Overall Height	9.76" (248 mm)
Approx Weight	7.7 lbs.(3.5 kg)

Accessories



50kN Clamped Boss Load Ring

Code: 78-0860



Clamped Boss Load Ring - 10.0 kN

Code: 78-0460



Clamped Boss Load Ring - 2.0 kN

Code: [78-0060](#)



Clamped Boss Load Ring - 28.0 kN

Code: [78-0760](#)



Clamped Boss Load Ring - 3.0 kN

Code: [78-0160](#)



Digital Proving Ring, 1,000 lbs (4.5 kN)

Code: [78-0264](#)

Spares/Consumables



Spare Dial Indicator for Load Rings

Code: [78-5461](#)

Alternatives



50kN Clamped Boss Load Ring

Code: [78-0860](#)



Clamped Boss Load Ring - 10.0 kN

Code: [78-0460](#)



Clamped Boss Load Ring - 2.0 kN

Code: [78-0060](#)



Clamped Boss Load Ring - 28.0 kN

Code: [78-0760](#)



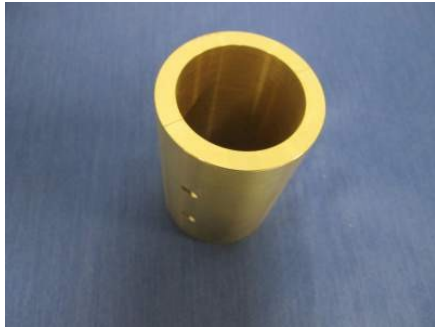
Clamped Boss Load Ring - 3.0 kN

Code: [78-0160](#)



Digital Proving Ring, 1,000 lbs (4.5 kN)

Code: [78-0264](#)



Two Part Split Mould 38mm

Code: [25-5130](#)

Product Group: [Two-way Split Moulds](#), [Two-Part Split Mould](#)



Two-Way Split Former 38mm/1.5 Inch Diameter.

Code: [25-5120](#)

Product Group: [Two-way Split Formers](#), [Two-Way Split Formers](#)

Two-Way Split Former For 38Mm/1.5 Inch Samples.



8in Dia ASTM Sieve 37.5mm Stainless Steel Mesh.

Code: 79-5610

Product Group: U.S. Standard Testing Sieves, 8"
Diameter ASTM Sieves, 8" Diameter ASTM Sieves, 8"
Diameter ASTM Sieves

Standards

ASTM E11

Specification

Frames	Full height; 2 1/4" (51 mm) depth to mesh.
Construction	Polished and lacquered brass with S.S. mesh.
Nameplates	Show standard, alternate and Tyler Screen Scale equivalent designations.
Weights	Net 1 lb. (453 g).
Sieve Size or Number	1-1/2"
Sieve Opening Standard	38.1 mm
Sieve Opening Alternative (in.)	1.5



8in Dia ASTM Sieve 25.0mm Stainless Steel Mesh.

Code: 79-5580
Product Group: U.S. Standard Testing Sieves, 8" Diameter ASTM Sieves, 8" Diameter ASTM Sieves, 8" Diameter ASTM Sieves

Standards
ASTM E11

Specification

Frames	Full height; 2 1/4" (51 mm) depth to mesh.
Construction	Polished and lacquered brass with S.S. mesh.
Nameplates	Show standard, alternate and Tyler Screen Scale equivalent designations.
Weights	Net 1 lb. (453 g).
Sieve Size or Number	1"
Sieve Opening Standard	25.0 mm
Sieve Opening Alternative (in.)	1