



IF IT'S WORTH BUILDING, IT'S WORTH TESTING

This wishlist was generated on 07/04/2017, and contains the following Products:

25-3518/01

Digital Tritest 50 Load Frame

25-3650

Unconfined Compression Platens. for Use on Ele Load Frames Max Sample Dia 95mm.

78-0260

Clamped Boss Load Ring - 4.5 kN

25-6530

Two Part Split Mould 70mm

25-6500

Two-Way Split Former 70mm Diameter.

81-0588

Vernier Caliper Range 0 to 200mm X 0.02mm.

25-0440

Dial Gauge 10mm Travel X 0.002mm Divisions.

26-2114/01

Digital Direct/Residual Shear Apparatus Complete with Lever Loading Assembly. 220-240V 50/60Hz 1Ph.

26-2132

Set of Weights 50 kg Slotted.

26-2181

Shear Box Assembly 60mm Sq.

26-2189

Specimen Extrusion Tool 60 mm sq.

78-0060

Clamped Boss Load Ring - 2.0 kN

83-5456

Dial Gauge

26-2181/10

Contents

www.ele.com
+44 (0) 01525 249 200



Porous Plate 60mm Sq.

80-0200/01

ELE Sieve Shaker



Digital Tritest 50 Load Frame

Code: [25-3518/01](#)

Product Group: [Digital Tritest 50 Load Frame](#), [CBR Load Frames](#), [Triaxial Load Frames](#)

- Microprocessor control
- Large on-board LED screen display
- Direct entry via a touch sensitive keyboard
- Rapid approach and return to datum of platen
- Fully variable speed, 0.00001 to 9.99999 mm/min
- Samples up to 100 mm diameter

This 50 kN capacity machine, designed primarily for triaxial testing of soil specimens up to 100 mm diameter x 200 mm long, comprises a rigid twin column construction with an integral fully variable microprocessor controlled drive unit and LCD display with a touch sensitive keyboard. The machine is normally bench mounted for ease of installation and operation.

The use of a microprocessor controlled drive system and keyboard entry provides the Digital Tritest 50 with a wide variety of features which include pause and speed reset during test, RS 232C, operator programming of speed and control functions, self test diagnostics and many other features.

A robustly constructed steel case houses the motor drive system with careful attention being given to the prevention of ingress of water or grit. All operating controls are mounted on the front panel of the machine, which is angled and recessed to prevent physical and environmental damage.

Standards

BS 1377-7, BS 1377-8, BS 1924-2, ASTM D1883, ASTM D2166, ASTM D2850, ASTM D4767, ASTM D7181, AASHTO T99, AASHTO T134, AASHTO T135, AASHTO T136, AASHTO T180, AASHTO T193, AASHTO T208, AASHTO T296, AASHTO T297

Further Information

Complete with RS 232C interface.

Specification

Capacity	50kN (11,200 lbf).
Speed Range	English mode: 0.000001 to 0.399999 in/min. Metric mode: 0.00001 to 9.99999 mm/min.
Rapid Approach Speed	1.0 in/min. (25 mm/min.).

Product Sheet

www.ele.com
+44 (0) 01525 249 200



Platen Travel	100mm (3.9"); limit switch protection.
Platen Diameter	133 mm (5.2")
Vertical Clearance	910 mm, (36 .8") maximum; 305mm, (12") minimum.
Horizontal Clearance	364mm, (15 .3").
Serial Interface	RS232C; programmable baud rate and protocol.
Overall Dimensions	500 x 500 x 1,470 mm, (19.7" w. x 19.7" d. x 57.8" h).
Weight	Net 100kg (220 lbs); Shpg. 136kg (300 lbs).

Accessories



50kN Clamped Boss Load Ring

Code: [78-0860](#)



Adaptor kit, to perform CBR on the Tritest 50 load frame

Code: [25-3518/10](#)



Clamped Boss Load Ring - 10.0 kN

Code: [78-0460](#)



Clamped Boss Load Ring - 28.0 kN

Code: [78-0760](#)



Clamped Boss Load Ring - 3.0 kN

Code: [78-0160](#)



Clamped Boss Load Ring - 4.5 kN

Code: [78-0260](#)

Alternatives



MultiPlex 50 Load Frame

Code: [25-3700/01](#)



Versa-Loader

Code: [25-3525/02](#)



Unconfined Compression Platens. for Use on Ele Load Frames Max Sample Dia 95mm.

Code: [25-3650](#)

Product Group: [N/A](#)

Standards

ASTM D2166, AASHTO T208, BS 1377, BS 1924, EN 13286-47, ASTM D1883, AASHTO T193



Clamped Boss Load Ring - 4.5 kN

Code: 78-0260

Product Group: Clamped Boss Load Rings, Digital Tritest 50 Load Frame, Load Measurement, Load Measurement, Direct/Residual Shear Apparatus, Proving Rings, Load Measurement

Specification

Capacity: kN, kgf, lbf	4.5, 450, 1000
Typical Design sensitivity: N/div, kgf/div, lbf/div	3.0, 0.30, 0.66
Overall height mm	248
Approx weight kg	3.5
Capacity - lbf	1,000
Capacity - kN	4.5
Capacity - kgf	450
Typical Design Sensitivity - lbf/div	0.66
Typical Design Sensitivity - kN/div	3
Typical Design Sensitivity - Kg/div	0.3
Overall Height	9.76" (248 mm)
Approx Weight	7.7 lbs.(3.5 kg)

Accessories



50kN Clamped Boss Load Ring

Code: 78-0860



Clamped Boss Load Ring - 10.0 kN

Code: 78-0460



Clamped Boss Load Ring - 2.0 kN

Code: [78-0060](#)



Clamped Boss Load Ring - 28.0 kN

Code: [78-0760](#)



Clamped Boss Load Ring - 3.0 kN

Code: [78-0160](#)



Digital Proving Ring, 1,000 lbs (4.5 kN)

Code: [78-0264](#)

Spares/Consumables



Spare Dial Indicator for Load Rings

Code: [78-5461](#)

Alternatives



50kN Clamped Boss Load Ring

Code: [78-0860](#)



Clamped Boss Load Ring - 10.0 kN

Code: [78-0460](#)



Clamped Boss Load Ring - 2.0 kN

Code: [78-0060](#)



Clamped Boss Load Ring - 28.0 kN

Code: [78-0760](#)



Clamped Boss Load Ring - 3.0 kN

Code: [78-0160](#)



Digital Proving Ring, 1,000 lbs (4.5 kN)

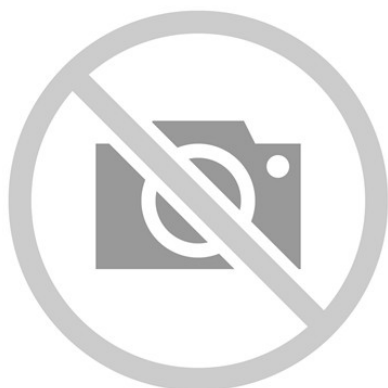
Code: [78-0264](#)



Two Part Split Mould 70mm

Code: [25-6530](#)

Product Group: [Two-way Split Moulds](#), [Two-Part Split Mould](#)



Two-Way Split Former 70mm Diameter.

Code: [25-6500](#)

Product Group: [Two-way Split Formers](#), [Two-Way Split Formers](#)

70Mm Diameter Two-Way Split Former.

Accessories



1.4\" data-bbox="284 382 556 402"/>

Code: [25-4320](#)



2.8\" data-bbox="284 527 556 547"/>

Code: [25-6680](#)



Two-Way Split Former 100mm Diameter.

Code: [25-7650](#)

Alternatives



1.4" Two-Way Split Formers

Code: [25-4320](#)



2.8" Two-Way Split Formers

Code: [25-6680](#)



Two-Way Split Former 100mm Diameter.

Code: [25-7650](#)



Vernier Caliper Range 0 to 200mm X 0.02mm.

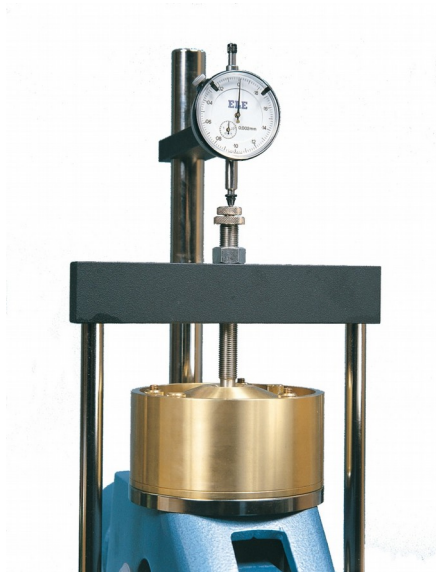
Code: [81-0588](#)

Product Group: [Determination of the Shape Index, Linear Shrinkage, Miscellaneous Laboratory Hardware](#)

Vernier callipers 200 x 0.002mm. Graduated in mm and inches.

Standards

EN 933-4, BS 1377



Dial Gauge 10mm Travel X 0.002mm Divisions.

Code: [25-0440](#)

Product Group: [Direct/Residual Shear Apparatus](#),
[Measurement of Horizontal and Vertical Movement](#),
[Vertical settlement measurement](#)

Spares/Consumables



Electronic Digital Indicator, 0.600"/15 mm range

Code: [88-4210](#)



Vertical Dial Indicator, English

Code: [25-0445](#)



Digital Direct/Residual Shear Apparatus Complete with Lever Loading Assembly. 220-240V 50/60Hz 1Ph.

Code: 26-2114/01

Product Group: [Direct/Residual Shear Apparatus](#),
[Direct/Residual Shear Apparatus](#)

- Microprocessor control
- Large on-board LCD screen display
- Direct entry via touch sensitive keyboard
- Rapid approach and return to start datum
- Fully variable speed, 0.00001 to 9.99999 mm/minute
- Accepts specimens up to 100 mm square

The ELE Direct Shear Apparatus accepts specimens 60 mm, 100 mm square or 2.5 inches in diameter. The use of a microprocessor controlled drive system and keyboard entry gives the apparatus a wide range of features that include pause and speed reset during test, RS 232C interface, operator programming of speed and control functions, self test diagnostics and many other features. A return to start datum provides a positive means of reversing the shearbox when either preparing for a new test or continuing with residual testing procedures.

Safety forward/reverse travel limit switches are fitted as standard and monitored through the electronics system control.

The electronics are housed in a modern moulded shroud, which includes a large LCD display and keyboard entry. The apparatus is enclosed in a robustly constructed case, has been designed for floor mounting and is supplied complete with carriage, loading hanger and 10:1 lever loading device.

Standards

ASTM D3080, AASHTO T236, BS 1377, EN 1997-2

Further Information

for 220 - 240 V AC, 50 - 60 Hz, 1 ph.

Specification

Sample Size

Accepts either 2.42", 2.5" diam.; 60 mm square samples using accessory shear box assemblies, not included.

Speed Range

Variable in either English or Metric units

Shear Force
Vertical Load

Dimensions

Weight

between 0.000001"
(0.00001 mm) to 0.399999"
(9.99999
mm) per minute.
1,100 lbf. (5.0 kN) maximum.
2,200 lbf. (10.0 kN) using 10:1
lever ratio.
44.7" l. x 12 .6" w. x 49.6" h.
(1,135 x 320 x 1,260 mm).
Net 181 lbs. (82 kg).

Accessories



Clamped Boss Load Ring - 2.0 kN

Code: 78-0060



Clamped Boss Load Ring - 3.0 kN

Code: 78-0160



Clamped Boss Load Ring - 4.5 kN

Code: 78-0260



Dial Gauge 10mm Travel X 0.002mm Divisions.

Code: 25-0440



Digital Proving Ring, 1,000 lbs (4.5 kN)

Code: [78-0264](#)



Digital Proving Ring, 450 lbs (2.0 kN)

Code: [78-0064](#)



Horizontal Displacement Transducer Assembly 15mm Travel 5 Pin Din Plug Mounting Pillar

Code: [27-1697](#)



Mechanical Dial Indicator - 25 mm Range Clockwise Movement

Code: [88-4110](#)



S-Type Load Cell 5 kN.for Triaxial Tests. Fitted with 5 Pin Din Plug.

Code: [27-1551](#)



Set of Weights 50 kg Slotted.

Code: [26-2132](#)



Shear Box Assembly 100mm Sq.

Code: [26-2197](#)



Shear Box Assembly 2.5 Inch Diameter

Code: [26-2213](#)



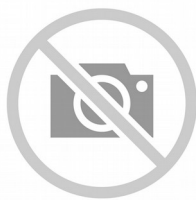
Shear Box Assembly 60mm Sq.

Code: [26-2181](#)



Vertical Displacement Transducer Assembly 15mm Travel with 5 Pin Din Plug Bracket for Shear Box

Code: [27-1689](#)



Weight Set A

Code: [25-0535](#)



Weight Set B

Code: [25-0537](#)

Spares/Consumables



Dial Indicator - 1.0" Range

Code: [88-4100](#)



Electronic Digital Indicator, 0.600"/15 mm range

Code: [88-4210](#)



Vertical Dial Indicator, English

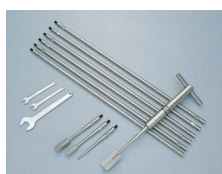
Code: [25-0445](#)

Alternatives



Digital Direct/Residual Shear Apparatus Complete with Lever Loading Assembly. 110-120V 50/60Hz 1Ph.

Code: [26-2114/02](#)



H60 Field Inspection Vane Tester 0-200Kpa In Carrying Case. includes calibration and certificates.

Code: [26-3335](#)



Hand Vane Tester

Code: [26-3346](#)



Laboratory Vane Apparatus with 4 Springs and 12.7mm Vane; Hand Operated.

Code: [26-2270](#)



Pocket Shearmeter with 3 Vanes 0 to 1Kgf/Cm2 X 0.5Kgf/Cm2.

Code: [26-2261](#)



Set of Weights 50 kg Slotted.

Code: [26-2132](#)

Product Group: [Application of Normal Stress](#)

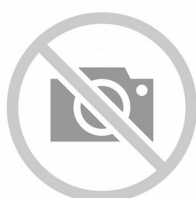
Normal stress is applied to the specimen through the lever loading device and the appropriate slotted weights

Accessories



Slotted Surcharge Weight 0.25 kg

Code: [26-2147](#)



Slotted Surcharge Weight 0.5 kg.

Code: [26-2145](#)



Slotted Surcharge Weight 1 kg.

Code: [26-2143](#)



Slotted Surcharge Weight 10 kg.

Code: [26-2137](#)



Slotted Surcharge Weight 2 kg.

Code: [26-2141](#)



Slotted Surcharge Weight 5 kg.

Code: [26-2139](#)

Alternatives



Slotted Surcharge Weight 0.25 kg

Code: [26-2147](#)



Slotted Surcharge Weight 0.5 kg.

Code: [26-2145](#)



Slotted Surcharge Weight 1 kg.

Code: [26-2143](#)



Slotted Surcharge Weight 10 kg.

Code: [26-2137](#)



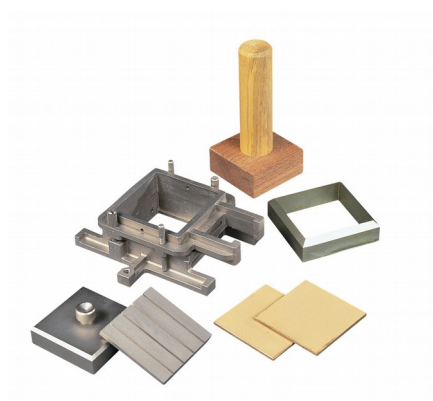
Slotted Surcharge Weight 2 kg.

Code: [26-2141](#)



Slotted Surcharge Weight 5 kg.

Code: [26-2139](#)



Shear Box Assembly 60mm Sq.

Code: [26-2181](#)

Product Group: [Shear Box Assemblies](#), [Shear Box Assemblies](#)

- Manufactured from corrosion resistant materials
- Sample size 60 x 60mm x 25mm high meeting BS 1377
- Incorporates PTFE faced box separation screws to reduce friction
- Supplied complete with upper and lower porous plates and loading pad
- Suitable for quick undrained or drained/residual tests

Standards

BS 1377, EN 1997-2, ASTM D3080, AASHTO T236

Further Information

All shearbox assemblies are designed to fit the carriage of 26-2114 series Digital Direct/Residual Shear Apparatus. They are supplied complete with three porous plates, one retaining plate and a loading pad. The three sizes supplied comply with the relevant requirements of BS 1377 and ASTM D3080. All assemblies can be used for quick shear tests or drained/residual shear tests.

Optional accessories are available including specimen cutters and extrusion tools.

Specification

Specimen area	60 x 60 mm
Specimen thickness	25 mm
Weight kg	2
Relevant standard	BS 1377

Accessories



Shear Box Assembly 100mm Sq.

Code: [26-2197](#)

Spares/Consumables



Porous Plate 60mm Sq.

Code: [26-2181/10](#)



Specimen Cutter 60mm Sq.

Code: [26-2185](#)



Specimen Extrusion Tool 60 mm sq.

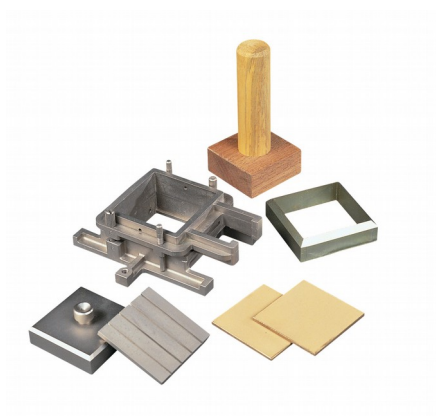
Code: [26-2189](#)

Alternatives



Shear Box Assembly 100mm Sq.

Code: [26-2197](#)



Specimen Extrusion Tool 60 mm sq.

Code: [26-2189](#)

Product Group: [Shearbox Assemblies- Accessories and Spares](#)

Standards

ASTM D3080, AASHTO T236

Accessories



Shear Box Assembly 60mm Sq.

Code: [26-2181](#)

Spares/Consumables



Specimen Extrusion Tool 2.5 Inch Diameter.

Code: [26-2221](#)

Alternatives



Specimen Extrusion Tool 2.5 Inch Diameter.

Code: [26-2221](#)



Clamped Boss Load Ring - 2.0 kN

Code: 78-0060

Product Group: Clamped Boss Load Rings, Digital
Tritest 50 Load Frame, Direct/Residual Shear
Apparatus, Proving Rings, Force measurement,
Measurement of Load (Shear Stress)

Standards

BS 1377, ASTM D3080

Specification

Capacity: kN, kgf, lbf	2.0, 200, 450
Typical Design sensitivity: N/div, kgf/div, lbf/div	1.3, 0.13, 0.30
Overall height mm	248
Approx weight kg	3.2
Capacity - lbf	450
Capacity - kN	2
Capacity - kgf	200
Typical Design Sensitivity - lbf/div	0.3
Typical Design Sensitivity - kN/div	1.3
Typical Design Sensitivity - Kgf/div	0.13
Overall Height	9.76" (248 mm)
Approx Weight	7 lbs. (3.2 kg)

Accessories



50kN Clamped Boss Load Ring

Code: 78-0860



Clamped Boss Load Ring - 10.0 kN

Code: 78-0460



Clamped Boss Load Ring - 28.0 kN

Code: [78-0760](#)



Clamped Boss Load Ring - 3.0 kN

Code: [78-0160](#)



Clamped Boss Load Ring - 4.5 kN

Code: [78-0260](#)



Digital Proving Ring, 450 lbs (2.0 kN)

Code: [78-0064](#)

Spares/Consumables



Spare Dial Indicator for Load Rings

Code: [78-5461](#)

Alternatives



50kN Clamped Boss Load Ring

Code: [78-0860](#)



Clamped Boss Load Ring - 10.0 kN

Code: [78-0460](#)



Clamped Boss Load Ring - 28.0 kN

Code: [78-0760](#)



Clamped Boss Load Ring - 3.0 kN

Code: [78-0160](#)



Clamped Boss Load Ring - 4.5 kN

Code: [78-0260](#)



Digital Proving Ring, 450 lbs (2.0 kN)

Code: [78-0064](#)



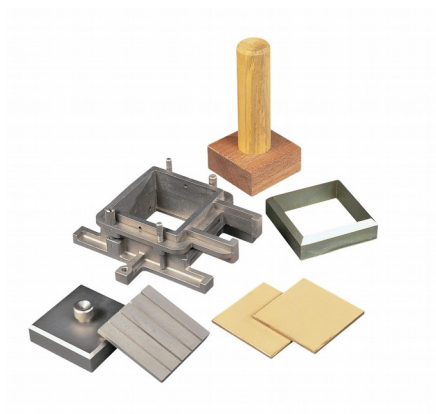
Dial Gauge

Code: [83-5456](#)

Product Group: [Dial Gauges, Measurement of Horizontal and Vertical Movement](#)

Specification

Diameter mm	57
Travel mm	10
Grad. Mm	0.01
Scale	RH
Anvil	Ball
Back type	A



Porous Plate 60mm Sq.

Code: [26-2181/10](#)

Product Group: [Shearbox Assemblies- Accessories and Spares](#)

Standards

ASTM D3080, AASHTO T236

Accessories



Shear Box Assembly 60mm Sq.

Code: [26-2181](#)

Spares/Consumables



2.42" Diameter Porous Stone

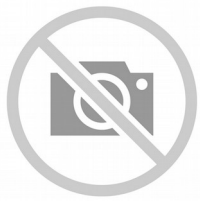
Code: [26-2223/10](#)



Porous Plate 2.5 Inch Diameter

Code: [26-2213/10](#)

Alternatives



2.42" Diameter Porous Stone

Code: [26-2223/10](#)



Porous Plate 2.5 Inch Diameter

Code: [26-2213/10](#)



ELE Sieve Shaker

Code: [80-0200/01](#)

Product Group: [ELE Sieve Shaker](#)

The ELE sieve shaker is powered by an electromagnetic drive that has no rotating parts to wear making it maintenance free and extremely quiet in operation.

The unit features a triple Vertical-Lateral-Rotary vibrating action that moves the sample over the sieve producing faster more efficient sieving, while the rapid vertical movements also help keep the apertures from blinding.

The shaker is ideal for laboratory or on site use. It is robust, compact and sufficiently lightweight to be portable. The separate digital microprocessor controlled console unit incorporates a keypad for setting the sieving program and is isolated from any effects of vibration from the shaker.

As standard the shaker includes, timer 0-999 minutes, adjustable vibration intensity and adjustable intermittent or continuous operation.

Further Information

****NOT AVAILABLE FOR SALE IN THE USA****

The unit accepts up to ten 200 mm or 8 inch, full height, diameter sieves and lid and receiver, or up to six 300 mm or 12 inch diameter sieves and lid and receiver. Complete as specified. Dimensions (l x w x h) 380 x 440 x 1085 mm. For 220 - 240 V AC, 50 Hz 1ph.