



IF IT'S WORTH BUILDING, IT'S WORTH TESTING

# Contents

www.ele.com  
+44 (0) 01525 249 200



This wishlist was generated on 22/04/2017, and contains the following Products:

---

36-1690/02

**Accu-Tek Touch 250 Automatic Compression Machine 110V/60Hz**

---

38-2015/01

**Automatic Vicat Apparatus**

---



## Accu-Tek Touch 250 Automatic Compression Machine 110V/60Hz

Code: 36-1690/02

Product Group: Accu-Tek Touch 250 Series

The Accu-Tek 250 Auto is supplied complete with self-centering lower platen and safety gates fitted with interlock switches ready for testing 6" x 12" cylinders, 4" x 8" cylinders, beams and cubes require additional accessories.

1112 kN (250,000 lbf) capacity.

ADR advanced digital readout. 5.7" (145 mm) touch screen display, incorporating full key pad (QWERTY type); pace deviation bar graph; automatic stress calculation; 200 tests can be stored locally and an unlimited number on an external PC. Download data to PC via USB or to printer via RS-232 interface.

The frame has upper and lower steel plate sections with four steel uprights, threaded and welded into place; 14.75" w. x 12" d. x 37" h. (375 x 305 x 940 mm).

Designed to meet the need for reliable and consistent concrete testing.

It is fully compliant to ASTM C39 and AASHTO T22 standards.

Options to test mortar cubes and concrete beams to ASTM C109 and C78 standards.

The automatic loading cycle is controlled by the closed-loop microprocessor controlled hydraulic system.

The microprocessor software provides a series of self-test routines to check the operation of the system.

Measurement units include kN, lbf or kgf.

Keypad permits alpha-numeric sample references.

One RS-232 port for printer or for connection to PC.

## Further Information

110vAC, 60 Hz, 1Ø.

## Specification

Capacity 250,000 lbf (1112 kN).

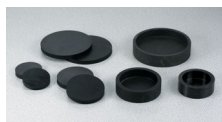
Voltage supply	110-120 V 60Hz.
Ram	6-1/8" (155 mm) diameter; 3" (76 mm) travel.
Upper platen	Swivel seat type; 6-1/4" (159 mm) diameter.
Lower platen	7" (178 mm) diameter.
Vertical clearance	12 -1/2" (318 mm); or 14 -1/2" (368 mm) with lower spacer removed - (Upper and Lower platens installed).
Horizontal clearance	9" (229 mm) between uprights.
Range	2500 to 250,000 lbf (11.2 to 1112 kN).
Accuracy	Factory calibrated to within 0.5% of reading from 1% to 100% of machine capacity.

## Accessories



### 100kN Flexural Fitting Kit (ADR) Used for Connecting Flexural Frames to ADR Compression Machines.

Code: [37-6138](#)



### 6" Retaining Caps

Code: [34-6134](#)



### Flexural Attachment

Code: [37-5528](#)



## Frame Stand

Code: 37-5570



## Impact Printer RS232 Serial Connection. Supplied Complete with 1 Paper Roll.

Code: 37-4859/02



## Pedestal for Testing 4" x 8" Cylinders

Code: 37-5561



## Platen Set for 2" Cube

Code: 37-5514



## Platen Set for 3" x 6" Cylinders

Code: 37-5508



## Platen set for 6" Cube

Code: [37-5516](#)



## Platen Set for 8" x 8" x 16" blocks

Code: [37-5522](#)



## Portable Impact Tape Printer

Code: [37-4862/02](#)

## Spares/Consumables



## Accutek Oil

Code: [9806-0016](#)



## Ram Seal Kit - Accu-Tek 250

Code: [CT-992](#)

## Alternatives





## 100kN Flexural (Beams) Frame. Supplied Without Specimen Bearers and Fitting Kit.

Code: 37-6130



## 100kN Flexural and Transverse (Flags) Frame. Supplied Without Specimen Bearers and Fitting Kit.

Code: 37-6140



## Accu-Tek Touch 250 Series Compression Machine 110V/60Hz

Code: 36-0690/02



## Accu-Tek Touch 250 Series Compression Machine 220V/50Hz

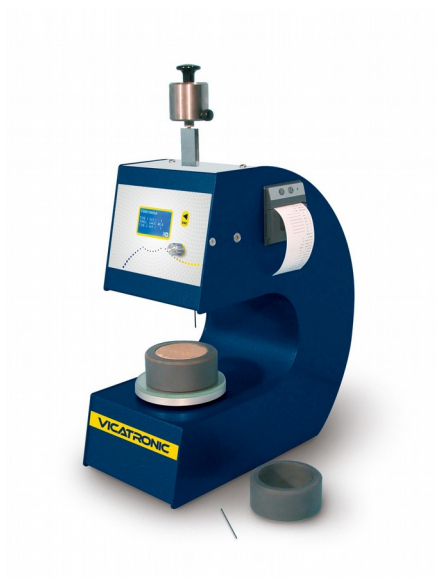
Code: 36-0690/01



## Accu-Tek Touch 250 Series Compression Machine 220V/60Hz

Code: [36-0690/06](#)





## Automatic Vicat Apparatus

Code: [38-2015/01](#)

Product Group: [Automatic Vicat](#)

Complete with EN and ASTM Initial and Final needles, Consistency Plunger, Windows(R) software and RS232 cable, 1 x EN and ASTM Mould and Glass Plate. Suitable for continuous use in saturated humidity, at a controlled temperature of  $20^{\circ}\text{C} \pm 1^{\circ}\text{C}$ .

## Standards

ASTM C187, ASTM C191

## Further Information

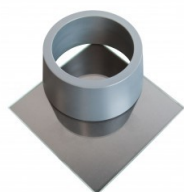
**\*\*NOT AVAILABLE FOR SALE IN THE USA\*\***

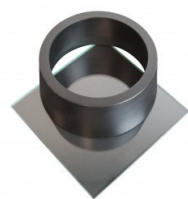
For 220 - 240 V AC, 50 - 60 Hz, 1 ph.

## Accessories

### ASTM Vicat Mould

Code: [38-2660](#)





## EN Vicat Mould

Code: [38-2300](#)



## Mould Tank

Code: [38-2015/15](#)



## Needle Cleaning Device

Code: [38-2015/12](#)



## Printer Paper Rolls

Code: [38-2015/14](#)



## Vicat Mould

Code: [38-2200](#)

## Spares/Consumables



### ASTM Initial and Final Set Needle

Code: [38-2023](#)



### Consistency Plunger

Code: [38-2015/16](#)



### EN Initial and Final Set Needle

Code: [38-2021](#)