



IF IT'S WORTH BUILDING, IT'S WORTH TESTING

This wishlist was generated on 04/05/2017, and contains the following Products:

---

24-0417/01

**Motorised Liquid Limit Device W/ Counter BS 220-240V 50Hz 1Ph.**

---

24-0425

**Grooving Tool and Gauge B.S.**

---

24-0430

**Glass Plate.**

---

26-2261

**Pocket Shearmeter with 3 Vanes 0 to 1Kgf/Cm2 X 0.5Kgf/Cm2.**

---

27-1500/01

**GDU 8 Channel Data Acquisition Unit 220-240 V 50/60 Hz, 1 Ph.**

---

78-5457/01

**Electronic Balance - 8 000 g x 0.1 g**

---

78-5477/01

**Electronic Balance - 16 000 g x 0.5 g**

---

25-0650

**Guelph Permeameter Supplied Complete with Extension Kit.**

---

36-4150/01

**ADR-Auto V2.0 2000 BS Compression Machine**

---

35-2302/09

**Ultrasonic Concrete Tester 110-240V 50/60Hz 1Ph**

---

34-6431/01

**Vibrating Poker 22mm Dia Tip 250mm Long. 220-240V 50/60Hz 1Ph.**

---

38-2010

**Vicat Frame**

---

38-2620

**ASTM Initial Set Needle**

---

38-2660

**ASTM Vicat Mould**

---

35-2505

**Crack Detection Microscope Magnification X 40 Measuring Range of 4mm In 0.02mm Divisions**

---

35-2846

**200mm "Demec" Mechanical Strain Gauge**

---

23-7452

**Speedy Moisture Tester D2 Large 0-20% Moisture Range. Supplied Less Calcium Carbide**

---

23-7700

**Calcium Carbide Powder 500G.**

---



## Motorised Liquid Limit Device W/ Counter BS 220-240V 50Hz 1Ph.

Code: [24-0417/01](#)

Product Group: [Casagrande Method](#)

Complete with revolution counter and motor.

## Standards

BS 1377-2

## Accessories



### Glass Plate.

Code: [24-0430](#)



## Grooving Tool and Gauge B.S.

Code: [24-0425](#)

## Alternatives



## Liquid Limit Device BS with Counter. C/W Metal Grooving Tool & Test Gauge.

Code: [24-0410](#)



## Grooving Tool and Gauge B.S.

Code: [24-0425](#)

Product Group: [Casagrande Method](#)

Constructed to British Standards.

## Standards

BS 1377-2



## Glass Plate.

Code: [24-0430](#)

Product Group: [Casagrande Method, Determination of Plastic Limit](#)

500 mm square x 10 mm thick.

## Standards

BS 1377-2



## Pocket Shearmeter with 3 Vanes 0 to 1Kgf/Cm2 X 0.5Kgf/Cm2.

Code: [26-2261](#)

Product Group: [Torvane Shear Device, Pocket Shearmeter](#)

The shearmeter can be used on tube samples, on the sides of pits, cuttings etc. It is an invaluable tool for initial site investigation work.

## Further Information

Complete with sensitive vane, standard vane and high-capacity vane. Range 0 to 1 x 0.05 kgf/cm<sup>2</sup>.

## Specification

Vane Driver	1.6" (41 mm) diam. x 3.2" (81 mm) l. with vane attached.
Dial Scale	1 kg/sq. cm (tons/sq. ft.) x 0.05 subdivisions.
Carrying Case	Plastic; 6" w. x 4" d. x 2" h. (152 x 102 x 51 mm).
Weight	Net 10.5 oz. (300 g).

## Spares/Consumables



### High-Capacity Vane

Code: [26-2261/14](#)



### Sensitive Vane

Code: [26-2261/10](#)





## Standard Vane

Code: 26-2261/12

## Alternatives



## Digital Direct/Residual Shear Apparatus Complete with Lever Loading Assembly. 110-120V 50/60Hz 1Ph.

Code: 26-2114/02



## Digital Direct/Residual Shear Apparatus Complete with Lever Loading Assembly. 220-240V 50/60Hz 1Ph.

Code: 26-2114/01



## Hand Vane Tester

Code: 26-3346





## GDU 8 Channel Data Acquisition Unit 220-240 V 50/60 Hz, 1 Ph.

Code: 27-1500/01

Product Group: Data Logging with the GDU, Geotechnical Data Acquisition Unit (GDU), Automatic Data Acquisition - CBR, Automatic Data Acquisition - Triaxial, Automatic Data Acquisition - Consolidation, Automatic Data Acquisition - Direct Shear

The GDU is a stand-alone, multi-tasking, multi-channel data logger, that is reliable and powerful, enabling it to co-ordinate test data from the range of ELE transducers required for various test methods.

The ELE Geotechnical Software package (DS7.1), in conjunction with the GDU and a range of transducers, are the two central components required to create a modern turnkey soil testing system. Being fully modular it can be adapted to a wide range of soil testing laboratory configurations.

- For performing CBR, Consolidation, Direct/Residual Shear and Total & Effective Stress Triaxial tests
- 8 Channels expandable to 32 for performing multiple, concurrent tests for cost savings
- Independent signal conditioning on each channel to maintain data accuracy
- Field-upgradeable software, meaning no downtime for future software and functionality upgrades
- Extended warranty.

## Specification

Case	Aluminum, free standing; houses power supply, analog to digital conversion module and an 8-channel analog input module with transducer energization.
Sockets	Standard 5-pin DIN type.
Input Range	$\pm 5$ volts to $\pm 10$ mV full scale.
Transducer Supply	10vDC.
Dimensions	12.8" w. x 14.3" d. x 6.1" h. (325 x 363 x 155 mm).
Weight	Net 14.08 lbs. (6.4 kg).

## Accessories



## 8-Channel Expansion Analog Input Module

Code: [27-1505](#)



## USB to Serial Adapter

Code: [27-1701](#)

## Alternatives



## GDU 8 Channel Data Acquisition Unit 100-120 V 60 Hz

Code: [27-1500/02](#)



## RS232/USB Cable, GDU

Code: [27-1510](#)



## Electronic Balance - 8 000 g x 0.1 g

Code: [78-5457/01](#)

Product Group: [Electronic Balances](#)

## Further Information

**\*\*Not available for sale in the USA\*\***

## Specification

Capacity resolution	8000 g x 0.1 g
Pan size	225 x 275 mm
Mains and battery	Yes
Dimensions (w x d x h)	315 x 355 x 110 mm
Weight	4 kg
Weighing units	g, kg, lb, lb:oz, oz
Repeatability	0.1 g



## Electronic Balance - 16 000 g x 0.5 g

Code: [78-5477/01](#)

Product Group: [Electronic Balances](#)

## Further Information

**\*\*Not available for sale in the USA\*\***

## Specification

Capacity resolution	16000 g x 0.5 g
Pan size	225 x 300 mm
Mains and battery	Yes
Dimensions (l x w x h)	340 x 320 125 mm
Weight	4 kg



## Guelph Permeameter Supplied Complete with Extension Kit.

Code: 25-0650

Product Group: Guelph Permeameter, Guelph Permeameter

- Lightweight and portable
- Robust construction
- Requires only 2.5 litres of water
- Results usually within 2 hours

The Guelph Permeameter is used to obtain accurate measurements of hydraulic conductivity, soil sorptivity and soil matrix flux potential. These three factors govern how liquids will move through an unsaturated soil profile.

Recent significant advances in both the theoretical and practical techniques of measuring soil hydraulic conductivity have been made by the University of Guelph, Canada. This has resulted in the development of the Guelph Permeameter, utilising the Constant Head Well principle.

## Standards

ASTM D5126

## Further Information

Guelph Permeameter Set Includes:-

- 1 Field Tripod
- 1 Well Auger
- 1 Well Tripod
- 1 Preparation Tool
- 1 Hand Pump
- 1 Extension Kit (extends depth by 800 mm)
- 1 Collapsible Water Container
- 1 Set of Instructions and Carrying Case

## Specification

Cell	Plated seamless tube 100 mm diameter x 130 mm height
Capacity	3.18 Litres
Base	Porous plate with three tie rods
Top plate	Machined to accept smaller tubes
Net Weight	13.6 kg
Overall Weight	111 kg
Permeameter	High impact polycarbonate, molded elastomers.

# Product Sheet

www.ele.com  
+44 (0) 01525 249 200



Auger	2" (50.8 mm) diam.; machined steel.
Carrying Case	Die-cut foam for parts storage.
Test Time	1/2 – 2 hours.
Test Depth	15 to 75 cm (0.5 to 2.5 ft).
Hydraulic Conductivity Range	10-4 to 10-8 m/sec (10-2 to 10-6 cm/sec).
Weight	Net 30 lbs. (13 .6 kg).

## Accessories



### Permeameter Extension Kit

Code: [25-0655](#)



## ADR-Auto V2.0 2000 BS Compression Machine

Code: [36-4150/01](#)

Product Group: [BS EN Compression Machines](#)

The ADR-Auto V2.0 2000 BS EN is supplied complete with self-centring lower platen and safety gates fitted with interlock switches ready for testing 300 x 150 mm diameter cylinders. When used for cube testing Distance pieces (EN) of the appropriate size must be ordered separately.

## Standards

EN 12350-6, NF P18-411

## Further Information

**\*\*Not available for sale in the USA\*\***

Whilst delivering all of the features and reputation of the established ADR-Auto V2.0 range with its 20 year design history, the new and improved user interface provides a high quality platform for testing that will enhance the performance of our compression machines. New, sophisticated electronics further the benefits of a closed-loop operation in testing concrete and cement/ mortar samples, satisfying the requirements of Quality Control Managers, Lab Managers and Technicians alike.

### ACCURACY & SAVINGS

The NEW ADR-Auto V2.0 range, with 145mm (5.7") touch screen interface and intuitive menu driven operation reduces the time taken to set up the machine and perform tests, reducing the time to train staff by up to 25%. Most testing errors produce lower strength results. Noncompliant loading rates can generate errors in measured strength. With the latest closed-loop technology used in the ADR-Auto V2.0, the most effective cement ratios can be used with confidence.

### TRACEABILITY & DATA QUALITY

The ADR-Auto V2.0 now provides improved data quality and traceability in due diligence cases - it is now possible to display traceability all the way from the machine/user to the accreditation body, increasing your reputation and peace of mind - all test results now come complete with the machine serial number attached. Prove your service quality - the ADR-Auto V2.0 now plots load vs time in real-time, proving full compliance to the testing standard. This data can be stored for later use or for detailed analysis of the concrete production.

### USER SAFETY

Full safety gates as standard, total systems diagnostics, ram run-out switches and overload warnings ensure the safety of your employees and the reliability of your machine.

## Specification

Testing Standards

BS EN 12390, BS EN 12390-3,



Capacity	BS EN 12390-4, BS EN 12390-5, EN 12504-1, EN 1354, EN 1521, EN 3161, EN 1338, EN 772-6, EN 13286-41, BS 3892-3, BS 187, BS 6717, BS EN ISO 7500-1, ASTM E4
Cubes (Concrete)	2000 kN
Cylinders (Concrete)	Up to 200 mm
Blocks	Up to 160 x 320 mm
TFV and ACV	Via optional Platen Handling System
Voltage Supply	Yes
Frame Type	220-240 V 50 Hz 1 Ph
Max vert. Clearance	Welded
Max hor. Clearance	340 mm
Platen Sizes	355 mm
Max Ram Travel	Lower 220mm sq, Upper 300mm dia
	50 mm

## Accessories



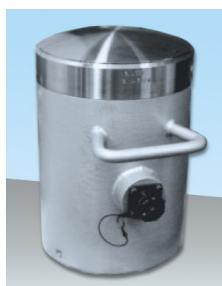
### 100 kN Flexural Fitting Kit ADR Auto for 220 - 240 V AC, 50 Hz, 1 ph

Code: [37-6135/01](#)



### 100 kN Flexural Fitting Kit ADR Auto for 220 - 240 V AC, 60 Hz, 1 ph

Code: [37-6135/06](#)



### 2000 kN Capacity Calibration Load Cell with Hand-Held Readout

Code: [37-8315](#)



## 300mm Lower Brick Platen

Code: [37-4842](#)



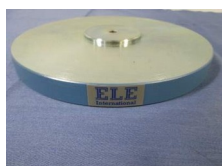
## BS Block Platens & Platen Handling Assembly for 2000kN & 3000kN BS Frames.

Code: [37-4830](#)



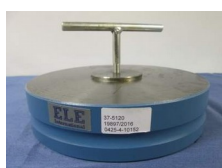
## EN 12390-3/4 Distance Piece - 100 mm Depth

Code: [37-5180](#)



## EN 12390-3/4 Distance Piece - 20 mm Depth

Code: [37-5110](#)



## EN 12390-3/4 Distance Piece - 50 mm Depth

Code: [37-5120](#)



## EN 12390-3/4 Distance Piece - 60 mm Depth

Code: [37-5140](#)



## Flexible Hose

Code: [5038B0027](#)

---



## Impact Printer Rs232 Serial Connection. Supplied Complete with 1 Paper Roll.

Code: [37-4859/01](#)

---

## Spares/Consumables



## Pressure transducer, 0-700bar, 0.05 to 10v DC Output

Code: [6014A0062](#)

---

## Alternatives



## ADR-Auto V2.0 2000 BS Compression Machine

Code: [36-4150/06](#)

---



## ADR-Auto V2.0 3000 BS EN Compression Machine

Code: [36-4165/06](#)

---



## ADR-Auto V2.0 3000 BS EN Compression Machine

Code: [36-4165/01](#)



## Ultrasonic Concrete Tester 110-240V 50/60Hz 1Ph

Code: [35-2302/09](#)

Product Group: [Ultrasonic Detection](#), [Ultrasonic Concrete Test](#)

35-2302/09 is the most versatile Concrete Tester to date. It has all the functions of the classic Concrete Tester, but offers additional benefits. Designed with laboratory use in mind, its compact size, rugged construction and optimized power consumption make it equally suitable for on-site use.

Along with the traditional transit time and pulse velocity measurement, 35-2302/09 offers path length measurement, perpendicular crack depth measurement and surface velocity measurement.

Optimized pulse shaping gives greater transmission range at lower voltage levels. This coupled with automated combination of the transmitter voltage and the receiver gain ensures an optimum received signal level, ensuring accurate and stable measurements.

The waveform can be viewed either via an external oscilloscope connection or directly on a connected PC screen.

Full remote control capability completes the package.

Complete with two 54 kHz transducers each with 3.6 metres of cable, coupling agent, carrying case and instruction manual.

### Standards

BS 1881-203, EN 12504-4, ASTM C597, D2845

### Further Information

For 110 - 240 V AC, 50 - 60 Hz, 1 ph.

### Spares/Consumables



### Ultrasound Couplant Supplied In 250ml bottle

Code: [35-2305](#)



## Vibrating Poker 22mm Dia Tip 250mm Long. 220-240V 50/60Hz 1Ph.

Code: [34-6431/01](#)

Product Group: [Vibrating Poker](#)

- High amplitude and speed
- Flexible shaft for long life

Used as an internal means of vibratory compaction. The poker is inserted into the concrete which is then compacted by the high frequency vibration action. For use in either laboratory or site environments, the diameter of the vibrating tip must not exceed 25% of the smallest dimension of the specimen.

## Standards

EN 12390-2

## Further Information

**\*\*NOT AVAILABLE FOR SALE IN THE USA\*\***

For 220 - 240 V AC, 50 - 60 Hz, 1 ph

## Specification

Tip Dimensions	22 mm diameter x 250 mm long
Shaft dimensions	2.0 m long
Speed	12,000 vibrations/min.
Overall Dimensions	200 x 300 x 350 mm
Weight	7 kg



## Vicat Frame

Code: [38-2010](#)

Product Group: [Vicat Method](#)

Complete with consistency plunger, 10 mm diameter.  
Requires one initial or final set needle to make up test weight to 300g.

## Standards

EN 196-3, EN 13454-2, ASTM C187, ASTM C191

## Further Information

**\*\*NOT AVAILABLE FOR SALE IN THE USA\*\***

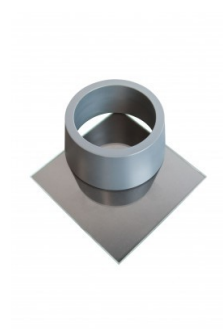
## Accessories

### ASTM Initial Set Needle

Code: [38-2620](#)







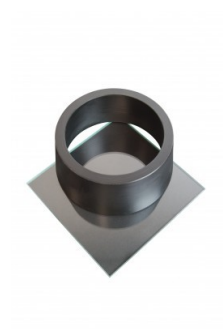
## ASTM Vicat Mould

Code: [38-2660](#)



## EN Initial and Final Set Needle

Code: [38-2110](#)



## EN Vicat Mould

Code: [38-2300](#)



## Engineer's Steel Rule

Code: [81-0805](#)



## Harvard Trip Balance

Code: [78-7090](#)



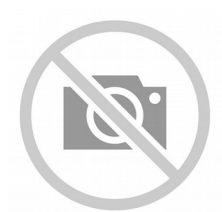
## Timer Clock

Code: [81-0518](#)



## Vicat Mould

Code: [38-2200](#)



## Weights for Harvard Trip Balance

Code: [78-7110](#)

## Spares/Consumables



## Consistency Plunger

Code: [38-2010/10](#)





## ASTM Initial Set Needle

Code: [38-2620](#)

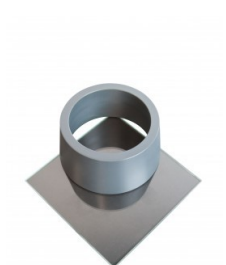
Product Group: [Vicat Apparatus, Vicat Method](#)

1 mm diameter.

## Standards

ASTM C187, ASTM C191

## Accessories



## ASTM Vicat Mould

Code: [38-2660](#)

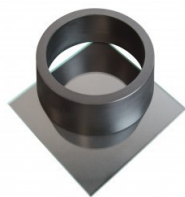


## EN Initial and Final Set Needle

Code: [38-2110](#)

## EN Vicat Mould

Code: [38-2300](#)



## Engineer's Steel Rule

Code: [81-0805](#)



## Harvard Trip Balance

Code: [78-7090](#)



## Vicat Mould

Code: [38-2200](#)





## Weights for Harvard Trip Balance

Code: [78-7110](#)

---

## Spares/Consumables

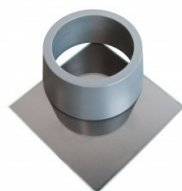


## Consistency Plunger

Code: [38-2010/10](#)

---

## Alternatives



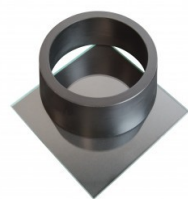
## ASTM Vicat Mould

Code: [38-2660](#)



## EN Initial and Final Set Needle

Code: [38-2110](#)



## EN Vicat Mould

Code: [38-2300](#)



## Engineer's Steel Rule

Code: [81-0805](#)



## Harvard Trip Balance

Code: [78-7090](#)



## Vicat Mould

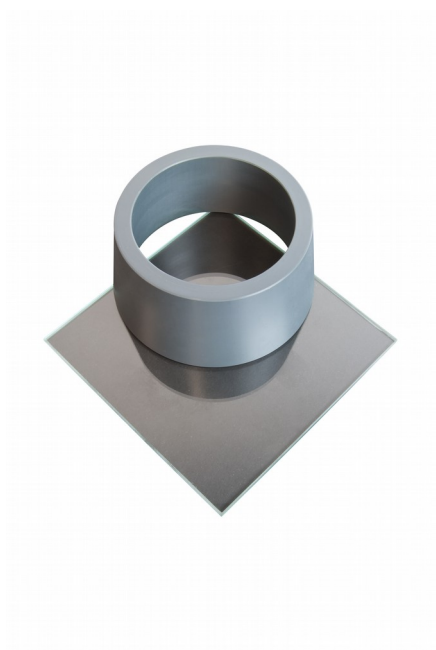
Code: [38-2200](#)



## Weights for Harvard Trip Balance

Code: [78-7110](#)





## ASTM Vicat Mould

Code: [38-2660](#)

Product Group: [Vicat Apparatus](#), [Vicat Method](#),  
[Automatic Vicat](#)

Accessory: manufactured from non-absorbent plastic  
and supplied complete with a glass base plate.

## Standards

ASTM C187, ASTM C191

## Accessories

### ASTM Initial Set Needle

Code: [38-2620](#)



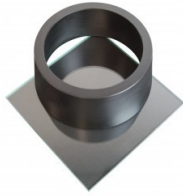
### EN Initial and Final Set Needle

Code: [38-2110](#)



## EN Vicat Mould

Code: [38-2300](#)



## Engineer's Steel Rule

Code: [81-0805](#)



## Harvard Trip Balance

Code: [78-7090](#)



## Vicat Mould

Code: [38-2200](#)





## Weights for Harvard Trip Balance

Code: [78-7110](#)

---

## Spares/Consumables



## Consistency Plunger

Code: [38-2010/10](#)

---

## Alternatives



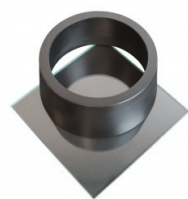
## ASTM Initial Set Needle

Code: [38-2620](#)



## EN Initial and Final Set Needle

Code: [38-2110](#)



## EN Vicat Mould

Code: [38-2300](#)



## Engineer's Steel Rule

Code: [81-0805](#)



## Harvard Trip Balance

Code: [78-7090](#)



## Vicat Mould

Code: [38-2200](#)



## Weights for Harvard Trip Balance

Code: [78-7110](#)



## Crack Detection Microscope Magnification X 40 Measuring Range of 4mm In 0.02mm Divisions

Code: [35-2505](#)

Product Group: [Crack Detection](#), [Crack Detection Microscope](#)

Specifically designed for measuring crack width in concrete, this high definition microscope operates via an adjustable light source provided by high power batteries.

Supplied in a pocket sized carrying case.

## Specification

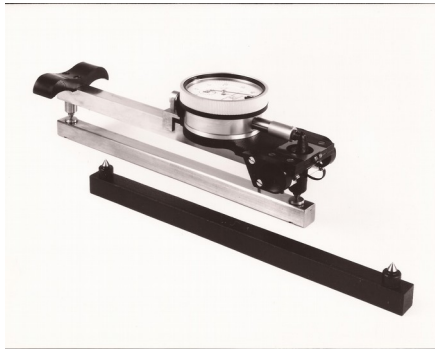
Magnification	X 35 .
Measuring Range	4 mm.
Divisions	0.02 mm.
Dimensions	1.5" x 3.5" x 6" (40 x 90 x 150 mm) in case.
Weight	Net 19.4 oz. (550 g).

## Alternatives



## Calibrated Crack Monitor

Code: [35-2510](#)



## 200mm "Demec" Mechanical Strain Gauge

Code: [35-2846](#)

Product Group: [Strain Gauge](#)

This gauge is ideal for monitoring cracks and strains in a number of structure types.

### Standards

BS 1881-206



## Speedy Moisture Tester D2 Large 0-20% Moisture Range. Supplied Less Calcium Carbide

Code: [23-7452](#)

Product Group: [Rapid Moisture Testers](#), [Rapid method by Speedy Moisture Tester](#), [Rapid method by Speedy Moisture Tester](#)

Uses a technique based on the fact that water will react with calcium carbide to form a gas and that the quantity of gas formed is directly proportional to the water present. The gas pressure is indicated on a built-in pressure gauge. The pressure gauge calibrated in percentage of moisture. Has a moisture range of 0-20% with gauge divisions every 0.2%. Holds a sample size of 20 g. Includes an electronic balance of 200 g capacity x 0.1 g readability and is supplied in plastic carrying case.

## Standards

BS 812, ASTM D4944, AASHTO T217

## Specification

Model	D2 Large
Moisture Range	0 to 20%
Gauge divisions	0.20%
Sample weight g	20
Weight complete kg	8.4

## Accessories



### Calcium Carbide Powder 500G.

Code: [23-7700](#)



### Reagent for Speedy Moisture Testers. Pack of 12 Cans 500 G Each. (Calcium Carbide)

Code: [23-7702](#)

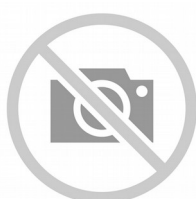




## Speedy Calibration Unit Self Contained Unit.

Code: [23-7600](#)

## Spares/Consumables



## Portable Electronic Balance

Code: [23-7452/12](#)

## Alternatives



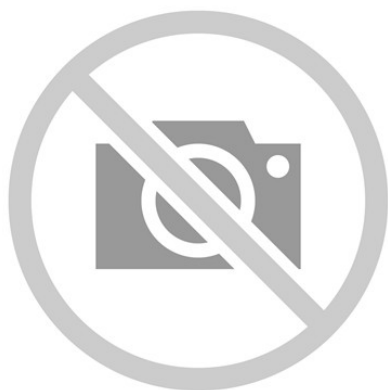
## Speedy Moisture Tester D2 Small 0-20% Moisture Range. Supplied Less Calcium Carbide

Code: [23-7502](#)



## Speedy Moisture Tester G2 Large 0-50% Moisture Range. Supplied Less Calcium Carbide

Code: [23-7462](#)



## Calcium Carbide Powder 500G.

Code: [23-7700](#)

Product Group: [Accessories for the Speedy Moisture Tester](#), [Accessories for the Speedy Moisture Tester](#)

Supplied in 500 g container.

## Standards

ASTM D4944, AASHTO T217

## Further Information

**\*\*NOT AVAILABLE FOR SALE IN THE USA\*\***