



IF IT'S WORTH BUILDING, IT'S WORTH TESTING

Contents

www.ele.com
+44 (0) 01525 249 200



This wishlist was generated on 05/05/2017, and contains the following Products:

26-2197

Shear Box Assembly 100mm Sq.

26-2201

Specimen Cutter 100mmsq.

26-2205

Specimen Extrusion Tool 100 mm sq

78-0160

Clamped Boss Load Ring - 3.0 kN

83-5456

Dial Gauge

26-2197/10

Porous Plate 100mm Sq.

25-3518/01

Digital Tritest 50 Load Frame

25-4166

38mm/1.5 Inch Base Adaptor for 50mm Cells.

25-4210

Dial Gauge 25mm Travel X 0.01mm Divisions

25-4290

Membrane Placing Tool 35mm/38mm.

25-5050

Pressure Pad 38mm/1.5 Inch Diameter.

25-5061

Rubber Membrane 38mm/1.5 Inch Diameter. Pack of 10.

25-5081

Membrane Sealing Ring 1.5"

25-5100

Suction Membrane Device 38mm/1.5 Inch Diameter.

25-5120

Two-Way Split Former 38mm/1.5 Inch Diameter.

26-1746

Bladder-Type Air/Water Pressure Assembly. 1000 Kpa Maximum Working Pressure.

26-1760

Pneumatic Pressure Reducing Panel. Provides Two Independent Pressure Outlets 1000 kPa Max.

26-1769

Nylon Tubing 30 Metre Length.

26-1880

Universal Pump and Pressure Indicating Panel 1700Kpa.

26-1926

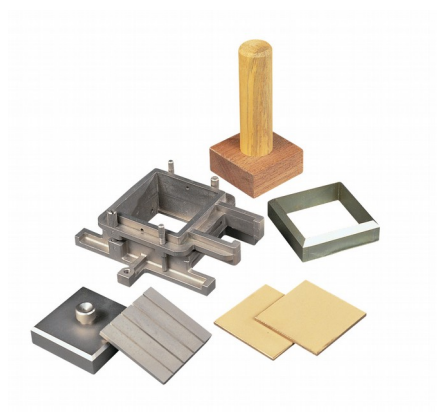
Nylon Tubing 6mm Od 3500Kpa.

78-0260

Clamped Boss Load Ring - 4.5 kN

83-1730/01

Air Compressor



Shear Box Assembly 100mm Sq.

Code: [26-2197](#)

Product Group: [Shear Box Assemblies](#), [Shear Box Assemblies](#)

- Manufactured from corrosion resistant materials
- Sample size 100 x 100mm x 25mm high meeting BS 1377
- Incorporates PTFE faced box separation screws to reduce friction
- Supplied complete with upper and lower porous plates and loading pad
- Suitable for quick undrained or drained/residual tests.

Standards

ASTM D3080, AASHTO T236

Further Information

All shearbox assemblies are designed to fit the carriage of 26-2114 series Digital Direct/Residual Shear Apparatus. They are supplied complete with three porous plates, one retaining plate and a loading pad. The three sizes supplied comply with the relevant requirements of BS 1377 and ASTM D3080. All assemblies can be used for quick shear tests or drained/residual shear tests.

Optional accessories are available including specimen cutters and extrusion tools.

Specification

Specimen area	100 x 100 mm
Specimen thickness	25 mm
Weight kg	5.2
Relevant standard	BS 1377

Accessories



Shear Box Assembly 60mm Sq.

Code: [26-2181](#)

Spares/Consumables



Specimen Cutter 100mmsq.

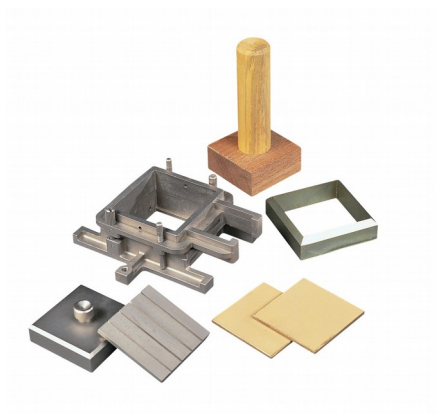
Code: 26-2201

Alternatives



Shear Box Assembly 60mm Sq.

Code: 26-2181



Specimen Cutter 100mmsq.

Code: [26-2201](#)

Product Group: [Shearbox Assemblies- Accessories and Spares](#)

Standards

ASTM D3080, AASHTO T236

Accessories



Shear Box Assembly 100mm Sq.

Code: [26-2197](#)

Spares/Consumables



Specimen Cutter 2.5 Inch Diameter.

Code: [26-2217](#)



Specimen Cutter 60mm Sq.

Code: [26-2185](#)

Alternatives



Specimen Cutter 2.5 Inch Diameter.

Code: 26-2217



Specimen Cutter 60mm Sq.

Code: 26-2185



Specimen Extrusion Tool 100 mm sq

Code: [26-2205](#)

Product Group: [Shearbox Assemblies- Accessories and Spares](#)

Standards

ASTM D3080, AASHTO T236



Clamped Boss Load Ring - 3.0 kN

Code: 78-0160

Product Group: Digital Tritest 50 Load Frame,
Direct/Residual Shear Apparatus, Proving Rings,
Measurement of Load (Shear Stress), Clamped Boss
Load Rings

Standards

BS 1377, ASTM D3080

Specification

Capacity: kN, kgf, lbf	3.0, 300, 650
Typical Design sensitivity: N/div, kgf/div, lbf/div	2.0, 0.20, 0.43
Overall height mm	248
Approx weight kg	3.3
Capacity - lbf	1,000
Capacity - kN	3
Capacity - kgf	300
Typical Design Sensitivity - lbf/div	0.43
Typical Design Sensitivity - kN/div	2
Typical Design Sensitivity - Kgf/div	0.2
Overall Height	9.76" (248 mm)
Approx Weight	7.3 lbs.(3.3 kg)

Accessories



50kN Clamped Boss Load Ring

Code: 78-0860



Clamped Boss Load Ring - 10.0 kN

Code: 78-0460



Clamped Boss Load Ring - 2.0 kN

Code: [78-0060](#)



Clamped Boss Load Ring - 28.0 kN

Code: [78-0760](#)



Clamped Boss Load Ring - 4.5 kN

Code: [78-0260](#)

Spares/Consumables



Spare Dial Indicator for Load Rings

Code: [78-5461](#)

Alternatives



50kN Clamped Boss Load Ring

Code: [78-0860](#)



Clamped Boss Load Ring - 10.0 kN

Code: [78-0460](#)



Clamped Boss Load Ring - 2.0 kN

Code: [78-0060](#)



Clamped Boss Load Ring - 28.0 kN

Code: [78-0760](#)



Clamped Boss Load Ring - 4.5 kN

Code: [78-0260](#)



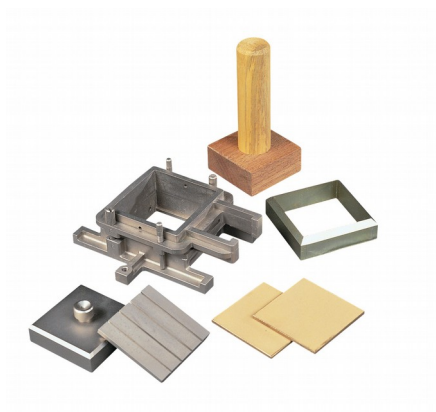
Dial Gauge

Code: [83-5456](#)

Product Group: [Dial Gauges, Measurement of Horizontal and Vertical Movement](#)

Specification

Diameter mm	57
Travel mm	10
Grad. Mm	0.01
Scale	RH
Anvil	Ball
Back type	A



Porous Plate 100mm Sq.

Code: [26-2197/10](#)

Product Group: [Shearbox Assemblies- Accessories and Spares](#)

Standards

ASTM D3080, AASHTO T236



Digital Tritest 50 Load Frame

Code: [25-3518/01](#)

Product Group: [Digital Tritest 50 Load Frame](#), [CBR Load Frames](#), [Triaxial Load Frames](#)

- Microprocessor control
- Large on-board LED screen display
- Direct entry via a touch sensitive keyboard
- Rapid approach and return to datum of platen
- Fully variable speed, 0.00001 to 9.99999 mm/min
- Samples up to 100 mm diameter

This 50 kN capacity machine, designed primarily for triaxial testing of soil specimens up to 100 mm diameter x 200 mm long, comprises a rigid twin column construction with an integral fully variable microprocessor controlled drive unit and LCD display with a touch sensitive keyboard. The machine is normally bench mounted for ease of installation and operation.

The use of a microprocessor controlled drive system and keyboard entry provides the Digital Tritest 50 with a wide variety of features which include pause and speed reset during test, RS 232C, operator programming of speed and control functions, self test diagnostics and many other features.

A robustly constructed steel case houses the motor drive system with careful attention being given to the prevention of ingress of water or grit. All operating controls are mounted on the front panel of the machine, which is angled and recessed to prevent physical and environmental damage.

Standards

BS 1377-7, BS 1377-8, BS 1924-2, ASTM D1883, ASTM D2166, ASTM D2850, ASTM D4767, ASTM D7181, AASHTO T99, AASHTO T134, AASHTO T135, AASHTO T136, AASHTO T180, AASHTO T193, AASHTO T208, AASHTO T296, AASHTO T297

Further Information

Complete with RS 232C interface.

Specification

Capacity	50kN (11,200 lbf).
Speed Range	English mode: 0.000001 to 0.399999 in/min. Metric mode: 0.00001 to 9.99999 mm/min.
Rapid Approach Speed	1.0 in/min. (25 mm/min.).

Product Sheet

www.ele.com
+44 (0) 01525 249 200



Platen Travel	100mm (3.9"); limit switch protection.
Platen Diameter	133 mm (5.2")
Vertical Clearance	910 mm, (36 .8") maximum; 305mm, (12") minimum.
Horizontal Clearance	364mm, (15 .3").
Serial Interface	RS232C; programmable baud rate and protocol.
Overall Dimensions	500 x 500 x 1,470 mm, (19.7" w. x 19.7" d. x 57.8" h).
Weight	Net 100kg (220 lbs); Shpg. 136kg (300 lbs).

Accessories



50kN Clamped Boss Load Ring

Code: [78-0860](#)



Adaptor kit, to perform CBR on the Tritest 50 load frame

Code: [25-3518/10](#)



Clamped Boss Load Ring - 10.0 kN

Code: [78-0460](#)



Clamped Boss Load Ring - 28.0 kN

Code: [78-0760](#)



Clamped Boss Load Ring - 3.0 kN

Code: [78-0160](#)



Clamped Boss Load Ring - 4.5 kN

Code: [78-0260](#)

Alternatives



MultiPlex 50 Load Frame

Code: [25-3700/01](#)



Versa-Loader

Code: [25-3525/02](#)



38mm/1.5 Inch Base Adaptor for 50mm Cells.

Code: [25-4166](#)

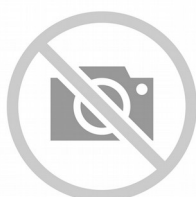
Product Group: [Specimen Base Adaptors, Base Pedestals](#)

38mm/1.5 Inch Base Adaptor with Twin Pore Pressure Ports for 50mm Cells.

Standards

BS 1377, ASTM D2850, ASTM D4767, AASHTO T296, AASHTO T297

Accessories



100 mm Base Adaptor for 100 mm Triaxial Cell.

Code: [25-4186](#)



50mm Base Adapter for 50mm Cells.

Code: [25-4168](#)



50mm Base Adaptors for 70mm Cells.

Code: [25-4174](#)



70mm Base Adaptor for 70mm Cells.

Code: [25-4176](#)

Alternatives



100 mm Base Adaptor for 100 mm Triaxial Cell.

Code: [25-4186](#)



50mm Base Adapter for 50mm Cells.

Code: [25-4168](#)



50mm Base Adaptors for 70mm Cells.

Code: [25-4174](#)



70mm Base Adaptor for 70mm Cells.

Code: [25-4176](#)



Dial Gauge 25mm Travel X 0.01mm Divisions

Code: [25-4210](#)

Product Group: [Digital Tritest 50 Load Frame, Axial Displacement](#)

25 mm travel x 0.01 mm

Standards

BS 1377

Accessories



Axial Strain Transducer Assembly 50mm Travel Fitted with 5 Pin Din Plug.

Code: [27-1617](#)

Spares/Consumables



Dial Indicator - 1.0" Range

Code: [88-4100](#)

Alternatives



Digital Tritest 50 Load Frame

Code: [25-3518/02](#)



Electronic Digital Indicator, 1.0"/25.4 mm range

Code: [88-4220](#)



Versa-Loader

Code: [25-3525/02](#)



Membrane Placing Tool 35mm/38mm.

Code: [25-4290](#)

Product Group: [Membrane Placing Tools, O-Ring Placing Tools](#)

Membrane Placing Tool For 35Mm/1.4 Inch And 38Mm/1.5 Inch Samples.

Standards

ASTM D2850, ASTM D4767, ASTM D5084, AASHTO T296, AASHTO T297, ASTM D7181

Accessories



Membrane Placing Tool 100mm/4 Inch Diameter.

Code: [25-7610](#)



Membrane Placing Tool 70mm/2.8 Inch Diameter.

Code: [25-6470](#)

Alternatives



Membrane Placing Tool 100mm/4 Inch Diameter.

Code: [25-7610](#)



Membrane Placing Tool 70mm/2.8 Inch Diameter.

Code: [25-6470](#)

Pressure Pad 38mm/1.5 Inch Diameter.

Code: [25-5050](#)

Product Group: [Pressure Pads](#)

38 mm / 1.5 Inch diameter pressure pad. The pad shall have two empty ports and will come complete with two blanking plugs, plastic tubing and connector. Suitable For both drained and undrained tests.



Standards

ASTM D2850, ASTM D4767, ASTM D7181, AASHTO T296, AASHTO T297



Rubber Membrane 38mm/1.5 Inch Diameter. Pack of 10.

Code: [25-5061](#)

Product Group: [Rubber Membranes](#)

Rubber Membrane For 38Mm/1.5 Inch Samples
(Pack Of 10).

Standards

AASHTO T296, AASHTO T297, ASTM D2850, ASTM D4767, ASTM D5084, ASTM D7181



Membrane Sealing Ring 1.5"

Code: [25-5081](#)

Product Group: [Sealing Rings](#)

Membrane Sealing Ring 38Mm Diameter (Pack Of 10).



Suction Membrane Device 38mm/1.5 Inch Diameter.

Code: [25-5100](#)

Product Group: [Suction Membrane Devices](#), [Suction Membrane Device](#)

Suction Membrane Device For 38Mm/1.5 Inch Samples.



Two-Way Split Former 38mm/1.5 Inch Diameter.

Code: [25-5120](#)

Product Group: [Two-way Split Formers](#), [Two-Way Split Formers](#)

Two-Way Split Former For 38Mm/1.5 Inch Samples.



Bladder-Type Air/Water Pressure Assembly. 1000 Kpa Maximum Working Pressure.

Code: 26-1746

Product Group: [Air/Water Pressure Systems - up to 1000 kPa](#)

With transparent plastic chamber for operating continuously at pressures up to 1000 kPa. A length of tubing is provided for connecting the air/water cylinder outlet to a pressure measuring system.

- Used to supply hydraulic pressure from a pneumatic pressure source.
- Prevents air entering the hydraulic pressure system.
- Maximum working pressure 1000kpa.
- Supplied with connectors and tubing for fitting to pressure measuring systems.

Accessories



Nylon Tubing 30 Metre Length.

Code: 26-1769

Spares/Consumables



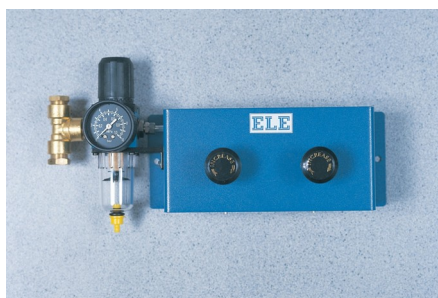
Pneumatic Pressure Reducing Panel. Provides Two Independent Pressure Outlets 1000 kPa Max.

Code: 26-1760



Replacement Bladder Wide Neck (38mm Id)

Code: 26-1746/10



Pneumatic Pressure Reducing Panel. Provides Two Independent Pressure Outlets 1000 kPa Max.

Code: [26-1760](#)

Product Group: [Air/Water Pressure Systems - up to 1000 kPa](#)

Comprising two constant pressure reducing valves with inlet water trap and pressure indicator. The unit allows a maximum output pressure of 1000 kPa. Maximum input pressure should not exceed 1400 kPa. The panel has an inlet connector to accept Nylon tubing from the air compressor and two 6 mm outlets for connecting Bladdertype Air/Water Pressure Assemblies. An outlet connector is fitted for the connection of an additional panel using Nylon tubing to increase the total capacity of the system. This outlet is blanked off when not required.



Nylon Tubing 30 Metre Length.

Code: [26-1769](#)

Product Group: [Air/Water Pressure Systems - up to 1000 kPa](#)

30 metre length. For pressures up to 1700 kPa. Used for connecting Air Compressors to Pneumatic Pressure Reducing Panels, or for connecting two Pressure Reducing Panels together.

Further Information

Nylon tubing 30 metres with pressure fittings.



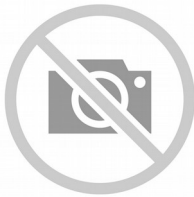
Universal Pump and Pressure Indicating Panel 1700Kpa.

Code: 26-1880

Product Group: [Modular Pressure Panel System](#)

This is the main pressure display in the system for monitoring various pressures and also provides fine control of the pressure within the system using the rotary hand pump. The unit is fitted with a dual calibrated 250 mm diameter pressure gauge, four inlet/outlet no-volume change valves, screw controlled rotary hand pump, water reservoir and isolating valves. The unit is housed in a hinged case for wall or bench mounting. By using an isolating valve the panel may be used to monitor cell or back pressure. 1700 kPa and 250 lbf/in².

Spares/Consumables



Pressure Gauge 1700Kpa (250Psi) 250mm Diameter.

Code: 26-1865/10



Nylon Tubing 6mm Od 3500Kpa.

Code: [26-1926](#)

Product Group: [Permeability of Rock, Volume Change Measurement](#)

6 mm outside diameter x 4 mm inside diameter. For use up to a pressure of 3500 kPa. Priced per metre.



Clamped Boss Load Ring - 4.5 kN

Code: 78-0260

Product Group: Clamped Boss Load Rings, Digital Tritest 50 Load Frame, Load Measurement, Load Measurement, Direct/Residual Shear Apparatus, Proving Rings, Load Measurement

Specification

Capacity: kN, kgf, lbf	4.5, 450, 1000
Typical Design sensitivity: N/div, kgf/div, lbf/div	3.0, 0.30, 0.66
Overall height mm	248
Approx weight kg	3.5
Capacity - lbf	1,000
Capacity - kN	4.5
Capacity - kgf	450
Typical Design Sensitivity - lbf/div	0.66
Typical Design Sensitivity - kN/div	3
Typical Design Sensitivity - Kg/div	0.3
Overall Height	9.76" (248 mm)
Approx Weight	7.7 lbs.(3.5 kg)

Accessories



50kN Clamped Boss Load Ring

Code: 78-0860



Clamped Boss Load Ring - 10.0 kN

Code: 78-0460



Clamped Boss Load Ring - 2.0 kN

Code: [78-0060](#)



Clamped Boss Load Ring - 28.0 kN

Code: [78-0760](#)



Clamped Boss Load Ring - 3.0 kN

Code: [78-0160](#)



Digital Proving Ring, 1,000 lbs (4.5 kN)

Code: [78-0264](#)

Spares/Consumables



Spare Dial Indicator for Load Rings

Code: [78-5461](#)

Alternatives



50kN Clamped Boss Load Ring

Code: [78-0860](#)



Clamped Boss Load Ring - 10.0 kN

Code: [78-0460](#)



Clamped Boss Load Ring - 2.0 kN

Code: [78-0060](#)



Clamped Boss Load Ring - 28.0 kN

Code: [78-0760](#)



Clamped Boss Load Ring - 3.0 kN

Code: [78-0160](#)



Digital Proving Ring, 1,000 lbs (4.5 kN)

Code: [78-0264](#)



Air Compressor

Code: 83-1730/01

Product Group: Air Compressors, Air/Water Pressure Systems - up to 1000 kPa

Further Information

****NOT AVAILABLE FOR SALE IN THE USA****

Specification

Dimensions (l x w x h)	483 x 457 x 864 mm
Free air delivery	2.0 cfm
Receiver capacity	50 litres
Maximum pressure	1000 kPa
Continuous working pressure	700 kPa
Electrical supply	220 – 240 V AC 1 ph 50 Hz
Water Trap	No
Weight	57 kg