



IF IT'S WORTH BUILDING, IT'S WORTH TESTING

Contents

www.ele.com
+44 (0) 01525 249 200



This wishlist was generated on 08/05/2017, and contains the following Products:

42-5305/10

Set of 12 Abrasive Charges EN)

24-2885

Pyknometer Complete with Non-Corrodable Cone and Rubber Seal 1Kg Capacity

42-1700

Sand Absorption Cone.

42-1720

Tamping Rod.

82-8500/01

Water Bath - 12 litres

42-1995

Bulk Density Measure 3 Litre.

42-2000

Bulk Density Measure 7 Litre

34-2830

Bulk Density Measure 10 Litre

34-2800

Bulk Density Measure 30 Litre

80-0200/01

ELE Sieve Shaker

34-0192

Slump Test Set BS & ASTM. C/W Slump Cone Base Plate Steel Rule Tamping Rod & Funnel.

81-4160

Sample Tray - 910 x 910 x 76 mm

81-3060

Sample Container - Tinned Steel 10 litres

34-3265

Air Entrainment Meter B Type Complete with Carrying Case. Supplied with Aluminium Tamping Bar.

34-0300/01

Vibro Consistometer

34-6431/01

Vibrating Poker 22mm Dia Tip 250mm Long. 220-240V 50/60Hz 1Ph.

81-0335

Trowel - Gauging

34-4650

100mm Cube Mould 2-Part Clamp Type. Cast Iron Construction. BS EN Compliant.

34-4670

150mm Cube Mould 2-Part Clamp Type. Cast Iron Construction. BS EN Compliant.

39-1100

Three-gang Mould

34-2910

Compacting Bar 25mm Sq X 380mm

34-6250/01

Vibrating Table 600 X 400mm Table Top. 220-240V 50Hz 1Ph. Supplied with clamping assembly

34-5003

100 X 100 X 500mm Beam Mould.

34-5260

150mm Dia Cylinder Mould 300mm Long.

34-6575/01

Large Curing Tank C/W with Circulating Pump Heater/Thermostat Unit and Lower Rack

36-4150/01

ADR-Auto V2.0 2000 BS Compression Machine

37-5420

Sub-Platen Assembly for 150mm Dia Specimens for Split Cylinder Testing to BS1881 / EN12390-6

37-5450

Test Pieces EN 12390-6 Pack of 100 Hardboard.

37-6130

100kN Flexural (Beams) Frame. Supplied Without Specimen Bearers and Fitting Kit.

37-6135/01

100 kN Flexural Fitting Kit ADR Auto for 220 - 240 V AC, 50 Hz, 1 ph

37-6131

BS 1881 Specimen Bearer Assembly 38mm Dia X 160mm Length.

37-6133

Ball Seating Assembly 150mm Dia Platens.



Set of 12 Abrasive Charges EN)

Code: [42-5305/10](#)

Product Group: [Los Angeles Abrasion Machine](#)

EN Set of 12.

Standards

EN 1097-2, ASTM C131, ASTM C535

Further Information

****NOT AVAILABLE FOR SALE IN THE USA****



Pyknometer Complete with Non-Corrodable Cone and Rubber Seal 1Kg Capacity

Code: [24-2885](#)

Product Group: [Particle Density: Pyknometer
Methods, Pycnometer Top and Jar](#)

Glass jar complete with noncorrodible cone.

Standards

BS 1377, BS 812-2, EN 1097-7, EN 1997-2, ASTM D854, AASHTO T100, ASTM C128, AASHTO T84

Accessories



100MI Density Bottle with Perforated Stopper.

Code: [24-2950](#)



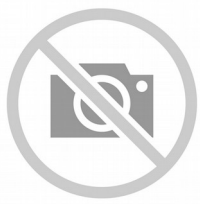
50MI Density Bottle with Perforated Stopper.

Code: [24-2900](#)



Density Bottle 25ML.

Code: [24-2890](#)



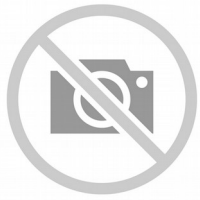
Pyknometer Gasket

Code: [24-2885/11](#)



Pyknometer Jar Only

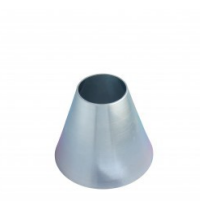
Code: [24-2885/10](#)



Pyknometer Top

Code: [24-2885/12](#)

Alternatives



Sand Absorption Cone.

Code: [42-1700](#)



Sand Absorption Cone.

Code: 42-1700

Product Group: Particle Density (specific gravity) and Water Absorption for Fine Aggregates, Sand Absorption Cone and Tamper

Made of brass to the dimensions given in BS 812, ASTM C128 and AASHTO T84.

Standards

BS 812, ASTM C128, AASHTO T84

Accessories



200mm Dia BS Sieve 75 Mic Stainless Steel Mesh.

Code: 79-0080



Funnel

Code: 82-2660



Sample Container - Plastic 10 litres

Code: [81-3540](#)



Sample Container - Tinned Steel 10 litres

Code: [81-3060](#)



Sample Tray - 305 mm Diameter x 50 mm

Code: [81-4700](#)



Tamping Rod.

Code: [42-1720](#)

Alternatives



Pyknometer Complete with Non-Corrodable Cone and Rubber Seal 1Kg Capacity

Code: [24-2885](#)



Sand Absorption Cone and Tamper

Code: [42-1725](#)



Tamping Rod.

Code: 42-1720

Product Group: Particle Density (specific gravity) and Water Absorption for Fine Aggregates, Sand Absorption Cone and Tamper

For use with cone. Tamping face is 25mm diameter and complies with BS 812, ASTM C128 and AASHTO T84.

Standards

BS 812, ASTM C128, AASHTO T84



Water Bath - 12 litres

Code: [82-8500/01](#)

Product Group: [Water Baths](#)

Further Information

****NOT AVAILABLE FOR SALE IN THE USA****

Specification

Capacity	12 litres
Working area	210 x 300 mm
Tray	Yes
Max Water Depth	130 mm
Controller	Digital
Temperature range and stability °C	0 to 99.9 ± 0.1
Electrical supply	220 – 240 V AC, 50 - 60 Hz, 1 ph
Rated power kW	1.5
Weight	8.1 kg



Bulk Density Measure 3 Litre.

Code: [42-1995](#)

Product Group: [Bulk Density Measures](#)

3 litre capacity

Standards

BS 812, ASTM C29

Further Information

****NOT AVAILABLE FOR SALE IN THE USA****



Bulk Density Measure 7 Litre

Code: [42-2000](#)

Product Group: [Bulk Density Measures](#)

7 litre capacity

Standards

BS 812

Further Information

****NOT AVAILABLE FOR SALE IN THE USA****



Bulk Density Measure 10 Litre

Code: [34-2830](#)

Product Group: [Bulk Density Measures, Fresh Concrete - Bulk Density Measures](#)

Manufactured from heavy gauge steel these bulk density measures comply with the requirements of either BS 812, EN 1097-3, 12350-6 or ASTM C138. All measures incorporate carrying handles as standard.

Standards

EN 12350-6, ASTM C138, EN 1097-3

Further Information

****NOT AVAILABLE FOR SALE IN THE USA****

For other bulk density measures see the aggregates section

Accessories



Aluminium Scoop Large

Code: [81-0220](#)



Compacting Bar 25mm Sq X 380mm

Code: [34-2910](#)



Float - Plasterer's type

Code: [81-0340](#)



Sample Tray - 1200 x 1160 x 50 mm

Code: [81-4230](#)



Shovel - With flat blade

Code: [81-0240](#)

Spares/Consumables



Soft Headed Mallet.

Code: [29-5020](#)



Bulk Density Measure 30 Litre

Code: [34-2800](#)

Product Group: [Bulk Density Measures, Fresh Concrete](#) - [Bulk Density Measures](#)

Manufactured from heavy gauge steel these bulk density measures comply with the requirements of either BS 812, EN 1097-3, 12350-6 or ASTM C138. All measures incorporate carrying handles as standard.

Standards

BS 812, EN 1097-3, EN 12350-6, ASTM C138

Further Information

****NOT AVAILABLE FOR SALE IN THE USA****

For other bulk density measures see the aggregates section

Accessories



Compacting Bar 25mm Sq X 380mm

Code: [34-2910](#)



Tamping Rod 16mm Dia X 600mm long hemispherical at both ends.

Code: [34-0130](#)



ELE Sieve Shaker

Code: [80-0200/01](#)

Product Group: [ELE Sieve Shaker](#)

The ELE sieve shaker is powered by an electromagnetic drive that has no rotating parts to wear making it maintenance free and extremely quiet in operation.

The unit features a triple Vertical-Lateral-Rotary vibrating action that moves the sample over the sieve producing faster more efficient sieving, while the rapid vertical movements also help keep the apertures from blinding.

The shaker is ideal for laboratory or on site use. It is robust, compact and sufficiently lightweight to be portable. The separate digital microprocessor controlled console unit incorporates a keypad for setting the sieving program and is isolated from any effects of vibration from the shaker.

As standard the shaker includes, timer 0-999 minutes, adjustable vibration intensity and adjustable intermittent or continuous operation.

Further Information

****NOT AVAILABLE FOR SALE IN THE USA****

The unit accepts up to ten 200 mm or 8 inch, full height, diameter sieves and lid and receiver, or up to six 300 mm or 12 inch diameter sieves and lid and receiver. Complete as specified. Dimensions (l x w x h) 380 x 440 x 1085 mm. For 220 - 240 V AC, 50 Hz 1ph.



Slump Test Set BS & ASTM. C/W Slump Cone Base Plate Steel Rule Tamping Rod & Funnel.

Code: [34-0192](#)

Product Group: [Slump Test](#)

BS and ASTM comprising of slump cone, base plate, steel rule, tamping rod and funnel.

Further Information

****NOT AVAILABLE FOR SALE IN THE USA****

Accessories



Sample Tray - 1200 x 1160 x 50 mm

Code: [81-4230](#)



Shovel - With flat blade

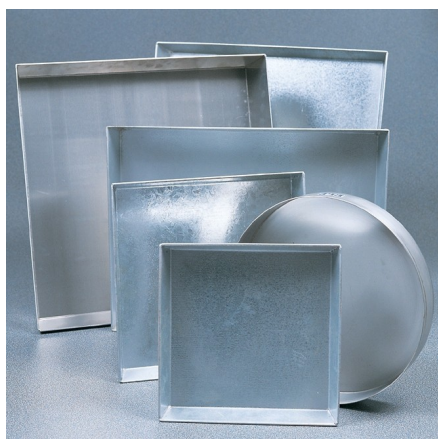
Code: [81-0240](#)

Spares/Consumables



Stopwatch

Code: [81-0521](#)



Sample Tray - 910 x 910 x 76 mm

Code: [81-4160](#)

Product Group: [Sample Trays](#)

Further Information

****NOT AVAILABLE FOR SALE IN THE USA****



Sample Container - Tinned Steel 10 litres

Code: [81-3060](#)

Product Group: [Moisture Content Tin and Sample Containers](#)

Further Information

****NOT AVAILABLE FOR SALE IN THE USA****



Air Entrainment Meter B Type Complete with Carrying Case. Supplied with Aluminium Tamping Bar.

Code: **34-3265**

Product Group: **Precision Air Entrainment Meter, Precision Air Entrainment Meter**

- 7 litre capacity
- Shock-proof pressure gauge mounting
- Lightweight aluminum construction
- Heavy-duty plastic carrying case for easy transport to site

The proper control of entrained air in concrete is recognized as one of the most important functions in modern concrete manufacture. For the concrete engineer, the ELE Precision Air Entrainment Meter offers an instrument for the testing and designing of concrete mixes.

The instrument is designed so that the operating parts form an integral unit. The container is rigid, thus providing an accurate device for the performance of unit weight testing. For convenience, the tare weight in grams is stamped on the bottom. When used with the supplied nomograph, the air meter provides quick and easy particle density and percent of free moisture in aggregate determinations.

Standards

ASTM C231, AASHTO T152

Specification

Capacity	7 Litres
Readings	Up to 22% entrained air
Accuracy	1/4% full scale
Aggregate Size	2" (50.8 mm) maximum
Container	With tare weight stamped on bottom; 2-piece clamping device for positive seal.
Water	4 oz required
Initial Pressure	Approx. 10 strokes needed
Pressure Gauge	In shock-proof mounting
Tamping Rod	Aluminium; 24" (610 mm) long
Dimensions	9-3/4" diam. X 13-1/4" h. (248 x 337 mm)
Weight	Net 15 lbs (8 kg)

Accessories



Aluminium Scoop Large

Code: [81-0220](#)



Compacting Bar 25mm Sq X 380mm

Code: [34-2910](#)



Float - Plasterer's type

Code: [81-0340](#)



Graduated Tamping Rod

Code: [34-0132](#)



Sample Tray - 1200 x 1160 x 50 mm

Code: [81-4230](#)



Shovel - With flat blade

Code: [81-0240](#)



Tamping Rod 16mm Dia X 600mm long hemispherical at both ends.

Code: [34-0130](#)

Spares/Consumables



Concrete Air Indicator

Code: [38-3280/10](#)



Gauge Kit

Code: [34-3265/12](#)



Pump Assembly

Code: [34-3265/10](#)



Soft Headed Mallet.

Code: [29-5020](#)



Stopwatch

Code: [81-0521](#)

Alternatives



Concrete Air Indicator Kit

Code: [34-3280](#)



Press-Ur-Meter Type A

Code: [34-3267](#)



Volumetair

Code: [34-3272](#)



Vibro Consistometer

Code: [34-0300/01](#)

Product Group: [Vebe Time](#)

Comprising of vibrating table, container, slump cone, graduated rod and plate. For 220 - 240 V AC, 50 Hz, 1 ph.

Further Information

****NOT AVAILABLE FOR SALE IN THE USA****

Accessories



Aluminium Scoop Large

Code: [81-0220](#)



Sample Tray - 1200 x 1160 x 50 mm

Code: [81-4230](#)



Shovel - With flat blade

Code: [81-0240](#)



Tamping Rod 16mm Dia X 600mm long hemispherical at both ends.

Code: [34-0130](#)



Transparent Disc for Vibro Consistometer 34-0300

Code: [34-0300/10](#)

Spares/Consumables



Stopwatch

Code: [81-0521](#)



Vibrating Poker 22mm Dia Tip 250mm Long. 220-240V 50/60Hz 1Ph.

Code: [34-6431/01](#)

Product Group: [Vibrating Poker](#)

- High amplitude and speed
- Flexible shaft for long life

Used as an internal means of vibratory compaction. The poker is inserted into the concrete which is then compacted by the high frequency vibration action. For use in either laboratory or site environments, the diameter of the vibrating tip must not exceed 25% of the smallest dimension of the specimen.

Standards

EN 12390-2

Further Information

****NOT AVAILABLE FOR SALE IN THE USA****

For 220 - 240 V AC, 50 - 60 Hz, 1 ph

Specification

Tip Dimensions	22 mm diameter x 250 mm long
Shaft dimensions	2.0 m long
Speed	12,000 vibrations/min.
Overall Dimensions	200 x 300 x 350 mm
Weight	7 kg



Trowel - Gauging

Code: [81-0335](#)

Product Group: [Trowels and Floats](#)

Further Information

****NOT AVAILABLE FOR SALE IN THE USA****

Accessories



Extensibility of Mould Apparatus BS

Code: [38-3200](#)



Le Chatelier Water Bath

Code: [38-3420/01](#)

Alternatives



Extensibility of Mould Apparatus BS

Code: [38-3200](#)



Le Chatelier Water Bath

Code: [38-3420/01](#)



100mm Cube Mould 2-Part Clamp Type. Cast Iron Construction. BS EN Compliant.

Code: [34-4650](#)

Product Group: [Cube Moulds](#)

2-part with clamp attached base plate.

Specification

Construction

Bolted sides and clamped base plate

Finish

Painted

Weight

42 lb (19.1 kg)

Accessories



Aluminium Scoop Large

Code: [81-0220](#)



Compacting Bar 25mm Sq X 380mm

Code: [34-2910](#)



Float - Plasterer's type

Code: [81-0340](#)



Mould Oil (25 Litre Drum)

Code: [82-7341](#)



Wire Brush

Code: [81-0705](#)

Spares/Consumables



Soft Headed Mallet.

Code: [29-5020](#)

Alternatives



Vibrating Table 600 X 400mm Table Top. 220-240V 50Hz 1Ph. Supplied with clamping assembly

Code: [34-6250/01](#)



150mm Cube Mould 2-Part Clamp Type. Cast Iron Construction. BS EN Compliant.

Code: [34-4670](#)

Product Group: [Cube Moulds](#)

2-part with clamp attached base plate.

Specification

Construction

Bolted sides and clamped base plate

Finish

Painted

Weight

42 lb (19.1 kg)

Accessories



Aluminium Scoop Large

Code: [81-0220](#)



Compacting Bar 25mm Sq X 380mm

Code: [34-2910](#)



Float - Plasterer's type

Code: [81-0340](#)



Mould Oil (25 Litre Drum)

Code: [82-7341](#)



Wire Brush

Code: [81-0705](#)

Spares/Consumables



Soft Headed Mallet.

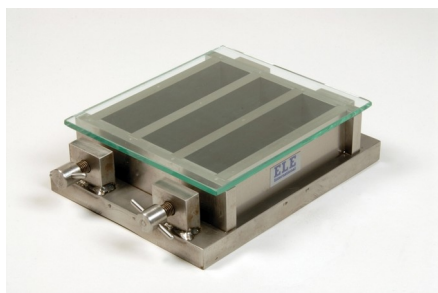
Code: [29-5020](#)

Alternatives



Vibrating Table 600 X 400mm Table Top. 220-240V 50Hz 1Ph. Supplied with clamping assembly

Code: [34-6250/01](#)



Three-gang Mould

Code: [39-1100](#)

Product Group: [Moulding of Prisms](#)

For 40.1 x 40 x 160 mm mortar prisms. This mould is manufactured to a very high specification. Supplied with glass plate.

Standards

EN 196-1, EN 413-2, EN 459-2, EN 1015-10, EN 13454-2, ISO 679, BS 3892-1, BS 4551-1

Further Information

****NOT AVAILABLE FOR SALE IN THE USA****

Accessories



Feeding Hopper

Code: [39-1120](#)

Spares/Consumables



Glass Plate

Code: [39-1100/10](#)



Mortar Sand

Code: [39-1170](#)

Alternatives



Feeding Hopper

Code: [39-1120](#)



Compacting Bar 25mm Sq X 380mm

Code: [34-2910](#)

Product Group: [Accessories for Concrete Moulds,](#)
[Precision Air Entrainment Meter](#)

Steel, 380 x 25 mm (length x square) tamping area,
EN/BS.

Standards

EN 12390-1



Vibrating Table 600 X 400mm Table Top. 220-240V 50Hz 1Ph. Supplied with clamping assembly

Code: [34-6250/01](#)

Product Group: [Vibrating Table](#)

Vibrating table mounted on a steel stand, supplied with clamp assembly.

Standards

EN 12390-2, EN 12350-6, EN 12350-7

Further Information

****NOT AVAILABLE FOR SALE IN THE USA****

3000 cycles per minute. For 220 - 240 V AC, 50 Hz, 1 ph.

Specification

Dimensions (table top)	600 x 400 mm
Maximum no. Cube moulds	2 x 150 mm ²
Clamp Assembly	Single
Weight	60 kg

Accessories



Compacting Bar 25mm Sq X 380mm

Code: [34-2910](#)



Wire Brush

Code: 81-0705

Alternatives



100 X 100 X 500mm Beam Mould.

Code: 34-5003



100mm Cube Mould 2-Part Clamp Type. Cast Iron Construction. BS EN Compliant.

Code: 34-4650



100mm Cube Mould 4-Part Clamp Type. Cast Iron Construction. BS EN Compliant.

Code: 34-4520



100mm Dia Cylinder Mould 200mm Long.

Code: 34-5210



150 X 150 X 750mm Beam Mould.

Code: [34-5053](#)



150mm Cube Mould 2-Part Clamp Type. Cast Iron Construction. BS EN Compliant.

Code: [34-4670](#)



150mm Cube Mould 4-Part Clamp Type. Cast Iron Construction. BS EN Compliant.

Code: [34-4570](#)



150mm Dia Cylinder Mould 150mm Long.

Code: [34-5230](#)



150mm Dia Cylinder Mould 300mm Long.

Code: [34-5260](#)



**200mm Cube Mould Clamp Type. Cast Iron Construction.
Stamped Mould Sections. EN Compliant.**

Code: [34-4620](#)



100 X 100 X 500mm Beam Mould.

Code: [34-5003](#)

Product Group: [Beam Moulds](#)

Complete with base plate

Weight 17 kg

Further Information

****NOT AVAILABLE FOR SALE IN THE USA****

Accessories



Aluminium Scoop Large

Code: [81-0220](#)



Compacting Bar 25mm Sq X 380mm

Code: [34-2910](#)



Float - Plasterer's type

Code: [81-0340](#)



Mould Oil (25 Litre Drum)

Code: [82-7341](#)



Wire Brush

Code: [81-0705](#)

Spares/Consumables



Soft Headed Mallet.

Code: [29-5020](#)

Alternatives



Vibrating Table 600 X 400mm Table Top. 220-240V 50Hz 1Ph. Supplied with clamping assembly

Code: [34-6250/01](#)



150mm Dia Cylinder Mould 300mm Long.

Code: [34-5260](#)

Product Group: [Cylinder Moulds](#)

150 mm diameter x 300 mm long, complete with base plate and locking ring.

Standards

EN 12390-1, EN 12390-2

Further Information

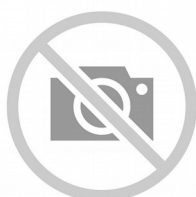
****NOT AVAILABLE FOR SALE IN THE USA****

Accessories



Aluminium Scoop Large

Code: [81-0220](#)



Compacting Bar 25mm Sq X 380mm

Code: [34-2910](#)



Float - Plasterer's type

Code: [81-0340](#)



Mould Oil (25 Litre Drum)

Code: [82-7341](#)



Tamping Rod 16mm Dia X 600mm long hemispherical at both ends.

Code: [34-0130](#)



Wire Brush

Code: [81-0705](#)

Spares/Consumables



Soft Headed Mallet.

Code: [29-5020](#)

Alternatives

Product Sheet

www.ele.com
+44 (0) 01525 249 200



Vibrating Table 600 X 400mm Table Top. 220-240V 50Hz 1Ph. Supplied with clamping assembly

Code: 34-6250/01



Large Curing Tank C/W with Circulating Pump Heater/Thermostat Unit and Lower Rack

Code: [34-6575/01](#)

Product Group: [Expansion \(swell\) Test Equipment, Large Curing Tank](#)

This Large Curing Tank is supplied complete with a submersible pump, immersion heater/thermostat unit and separate control panel. The tank includes a lower rack as standard and is designed to maintain the temperature at $20 \pm 2^{\circ}\text{C}$, providing that the ambient temperature does not fall below 15°C or rise above 20°C .

Standards

EN 12390-2, ASTM C31, AASHTO T23

Further Information

****NOT AVAILABLE FOR SALE IN THE USA****

Supplied as specified. For 220 - 240 V AC, 50 - 60 Hz, 1 ph.

Specification

Internal Dimensions	1040 x 1040 x 605 mm (l x w x h)
Capacity	650 litres
Rated Power	2000 watt
Weight	60 kg

Accessories



Maximum and Minimum Thermometer

Code: [82-5310](#)

Alternatives



Jolting Table 220 - 240 V AC 60 Hz

Code: [39-1150/06](#)



ADR-Auto V2.0 2000 BS Compression Machine

Code: [36-4150/01](#)

Product Group: [BS EN Compression Machines](#)

The ADR-Auto V2.0 2000 BS EN is supplied complete with self-centring lower platen and safety gates fitted with interlock switches ready for testing 300 x 150 mm diameter cylinders. When used for cube testing Distance pieces (EN) of the appropriate size must be ordered separately.

Standards

EN 12350-6, NF P18-411

Further Information

****Not available for sale in the USA****

Whilst delivering all of the features and reputation of the established ADR-Auto V2.0 range with its 20 year design history, the new and improved user interface provides a high quality platform for testing that will enhance the performance of our compression machines. New, sophisticated electronics further the benefits of a closed-loop operation in testing concrete and cement/ mortar samples, satisfying the requirements of Quality Control Managers, Lab Managers and Technicians alike.

ACCURACY & SAVINGS

The NEW ADR-Auto V2.0 range, with 145mm (5.7") touch screen interface and intuitive menu driven operation reduces the time taken to set up the machine and perform tests, reducing the time to train staff by up to 25%. Most testing errors produce lower strength results. Noncompliant loading rates can generate errors in measured strength. With the latest closed-loop technology used in the ADR-Auto V2.0, the most effective cement ratios can be used with confidence.

TRACEABILITY & DATA QUALITY

The ADR-Auto V2.0 now provides improved data quality and traceability in due diligence cases - it is now possible to display traceability all the way from the machine/user to the accreditation body, increasing your reputation and peace of mind - all test results now come complete with the machine serial number attached. Prove your service quality - the ADR-Auto V2.0 now plots load vs time in real-time, proving full compliance to the testing standard. This data can be stored for later use or for detailed analysis of the concrete production.

USER SAFETY

Full safety gates as standard, total systems diagnostics, ram run-out switches and overload warnings ensure the safety of your employees and the reliability of your machine.

Specification

Testing Standards

BS EN 12390, BS EN 12390-3,

Capacity	BS EN 12390-4, BS EN 12390-5, EN 12504-1, EN 1354, EN 1521, EN 3161, EN 1338, EN 772-6, EN 13286-41, BS 3892-3, BS 187, BS 6717, BS EN ISO 7500-1, ASTM E4
Cubes (Concrete)	2000 kN
Cylinders (Concrete)	Up to 200 mm
Blocks	Up to 160 x 320 mm
TFV and ACV	Via optional Platen Handling System
Voltage Supply	Yes
Frame Type	220-240 V 50 Hz 1 Ph
Max vert. Clearance	Welded
Max hor. Clearance	340 mm
Platen Sizes	355 mm
Max Ram Travel	Lower 220mm sq, Upper 300mm dia
	50 mm

Accessories



100 kN Flexural Fitting Kit ADR Auto for 220 - 240 V AC, 50 Hz, 1 ph

Code: [37-6135/01](#)



100 kN Flexural Fitting Kit ADR Auto for 220 - 240 V AC, 60 Hz, 1 ph

Code: [37-6135/06](#)



2000 kN Capacity Calibration Load Cell with Hand-Held Readout

Code: [37-8315](#)



300mm Lower Brick Platen

Code: [37-4842](#)



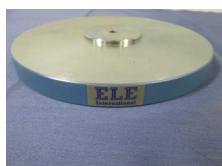
BS Block Platens & Platen Handling Assembly for 2000kN & 3000kN BS Frames.

Code: [37-4830](#)



EN 12390-3/4 Distance Piece - 100 mm Depth

Code: [37-5180](#)



EN 12390-3/4 Distance Piece - 20 mm Depth

Code: [37-5110](#)



EN 12390-3/4 Distance Piece - 50 mm Depth

Code: [37-5120](#)



EN 12390-3/4 Distance Piece - 60 mm Depth

Code: [37-5140](#)



Flexible Hose

Code: [5038B0027](#)



Impact Printer Rs232 Serial Connection. Supplied Complete with 1 Paper Roll.

Code: [37-4859/01](#)

Spares/Consumables



Pressure transducer, 0-700bar, 0.05 to 10v DC Output

Code: [6014A0062](#)

Alternatives



ADR-Auto V2.0 2000 BS Compression Machine

Code: [36-4150/06](#)



ADR-Auto V2.0 3000 BS EN Compression Machine

Code: [36-4165/01](#)



ADR-Auto V2.0 3000 BS EN Compression Machine

Code: 36-4165/06



Sub-Platen Assembly for 150mm Dia Specimens for Split Cylinder Testing to BS1881 / EN12390-6

Code: [37-5420](#)

Product Group: [Platen Assemblies](#)

For testing cylinders of 150 x 150 mm and 150 x 300 mm (diameter x length).

Standards

EN 12350-6, BS 1881-131

Further Information

Not available for sale in the USA



Test Pieces EN 12390-6 Pack of 100 Hardboard.

Code: [37-5450](#)

Product Group: [Platen Assemblies](#)

Hardboard strips for use with Split Cylinder Platen Assemblies. Pack of 100.

Further Information

****Not available for sale in the USA****



100kN Flexural (Beams) Frame. Supplied Without Specimen Bearers and Fitting Kit.

Code: [37-6130](#)

Product Group: [Flexural Testing for Beams](#)

- Open sided for ease of specimen loading
- Meets EN 12390-5, 1521, 13161, 772-6 and ASTM C78 for standard section beams
- Optional ball seating assembly

This rigidly constructed, open sided frame is suitable for testing 100 mm and 150 mm square-section beams. The frame supports a hydraulic ram and upper sub-platen assembly incorporating a spherical seating. The upper and lower sub-platens will accept various specimen loading bearers, which are supplied separately.

Standards

BS 1881-118, EN 12390-5

Further Information

Not available for sale in the USA

Accessories



100 kN Flexural Fitting Kit ADR Auto for 110 - 120 V AC, 60 Hz, 1 ph

Code: [37-6135/02](#)



100 kN Flexural Fitting Kit ADR Auto for 220 - 240 V AC, 50 Hz, 1 ph

Code: [37-6135/01](#)



100 kN Flexural Fitting Kit ADR Auto for 220 - 240 V AC, 60 Hz, 1 ph

Code: [37-6135/06](#)



100kN Flexural Fitting Kit (ADR) Used for Connecting Flexural Frames to ADR Compression Machines.

Code: [37-6138](#)



ASTM C78 Specimen Bearer Assembly Case-Hardened 38mm Dia X 160mm Length.

Code: [37-6132](#)



Ball Seating Assembly 150mm Dia Platens.

Code: [37-6133](#)



BS 1881 Specimen Bearer Assembly 38mm Dia X 160mm Length.

Code: [37-6131](#)



Standard Distance Piece - 100 mm Depth

Code: [37-5100](#)



Standard Distance Piece - 20 mm Depth

Code: [37-4980](#)



Standard Distance Piece - 50 mm Depth

Code: [37-5000](#)



Standard Distance Piece - 60 mm Depth

Code: [37-5020](#)



Standard Distance Piece - 80 mm Depth

Code: [37-5050](#)

Alternatives



Accu-Tek Touch 250 Automatic Compression Machine 110V/60Hz

Code: [36-1690/02](#)



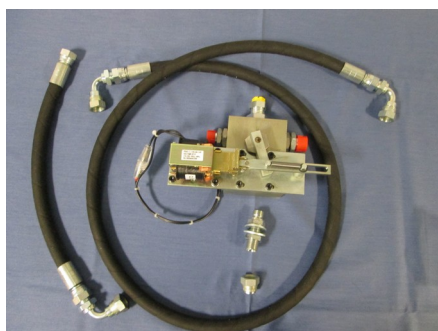
ADR Touch Manual Power Pack for 100kN Flexural Frame 110V 60Hz 1Ph

Code: [36-6165/02](#)



ADR Touch Manual Power Pack for 100kN Flexural Frame 220-240V 50/60Hz 1Ph

Code: [36-6165/01](#)



100 kN Flexural Fitting Kit ADR Auto for 220 - 240 V AC, 50 Hz, 1 ph

Code: [37-6135/01](#)

Product Group: [Accessories to connect ELE compression machines to the flexural/transverse frames](#)

These flexural frames can be used with a wide range of ELE compression machines. Simply select one of two fitting kits designed to link the flexural frame to either the ADR-Auto range of compression machines or any other ADR compression machine.

Further Information

****Not available for sale in the USA****



BS 1881 Specimen Bearer Assembly 38mm Dia X 160mm Length.

Code: [37-6131](#)

Product Group: [Flexural Testing for Beams](#)

Comprising 2 self-aligning upper bearers, 1 self-aligning and 1 fixed lower bearer. Roller bearers are 38 mm diameter x 160 mm long. Suitable for 3- or 4-point flexural testing of beams.

Standards

BS 1881-118, EN 12390-5

Further Information

****Not available for sale in the USA****



Ball Seating Assembly 150mm Dia Platens.

Code: [37-6133](#)

Product Group: [Flexural Testing for Beams](#)

Comprising a ball seating assembly with 150 mm diameter platen and a lower platen 150 mm diameter x 16 mm thick. Suitable for testing low-strength specimens.

Further Information

****Not available for sale in the USA****