



IF IT'S WORTH BUILDING, IT'S WORTH TESTING

This wishlist was generated on 19/05/2017, and contains the following Products:

38-2012

Vicat Apparatus

42-4300

150mm Aggregate Crushing Value Apparatus. Supplied Complete with Metal Measure and Tamping Rod.

36-4165/01

ADR-Auto V2.0 3000 BS EN Compression Machine

35-1500

Advanced SilverSchmidt Concrete Test Hammer

34-6763

Concrete Curing Tank

34-3590/01

Tilting Drum Concrete Mixer 120/90L/ (4/3Cu.Ft) Complete with Stand

45-6892

Asphalt Flow Indicator with Brake - English

42-5310/01

Los Angeles Abrasion Machine with CE Safety Cabinet W/ Microswitches. 220-240V 50Hz 1Ph.

78-0860

50kN Clamped Boss Load Ring

88-4100

Dial Indicator - 1.0" Range

24-9260

Swell Plate

45-9315/01

Rice Test Vibrator



Vicat Apparatus

Code: [38-2012](#)

Product Group: [Vicat Apparatus](#)

Includes Vicat needle and mould.

Standards

ASTM C91, ASTM C187, ASTM C191, AASHTO T129, AASHTO T131

Specification

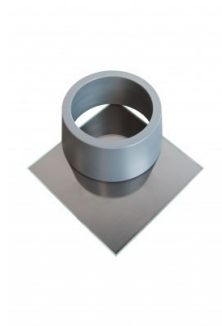
Plunger	Reversible; 10 mm diam. at one end and 1 mm diam. needle at other end; combined weight 300 grams.
Needle	Steel; mounted in plunger; 1 mm diam. x 50 mm long.
Scale	Graduated in millimeters.
Mold	Hard rubber; 70 mm base diam. x 60 mm top diam. x 40 mm h.
Weight	Net 4 lbs. (1.8 kg).

Accessories

ASTM Initial Set Needle

Code: [38-2620](#)





ASTM Vicat Mould

Code: [38-2660](#)



150mm Aggregate Crushing Value Apparatus. Supplied Complete with Metal Measure and Tamping Rod.

Code: 42-4300

Product Group: [Aggregate Crushing Value \(ACV\) and Ten Percent Fines Value \(TFV\)](#)

Comprising of 150 mm nominal diameter steel cylinder, plunger and base plate supplied complete with metal measure and tamping rod.

Standards

BS 812-112

Further Information

****NOT AVAILABLE FOR SALE IN THE USA****

Accessories



Tamping Rod 16mm Dia X 600mm long hemispherical at both ends.

Code: 34-0130

Alternatives



75mm Aggregate Crushing Value Apparatus. Supplied Complete with Metal Measure and Tamping Rod.

Code: 42-4500



ADR-Auto V2.0 3000 BS EN Compression Machine

Code: [36-4165/01](#)

Product Group: [BS EN Compression Machines](#)

The ADR-Auto V2.0 3000 BS EN is supplied complete with self-centring lower platen and safety gates fitted with interlock switches ready for testing 300 x 150 mm diameter cylinders. When used for cube testing Distance pieces (EN) of the appropriate size must be ordered separately.

Standards

EN 12350-6, NF P18-411

Further Information

****Not available for sale in the USA****

Whilst delivering all of the features and reputation of the established ADR-Auto V2.0 range with its 20 year design history, the new and improved user interface provides a high quality platform for testing that will enhance the performance of our compression machines. New, sophisticated electronics further the benefits of a closed-loop operation in testing concrete and cement/ mortar samples, satisfying the requirements of Quality Control Managers, Lab Managers and Technicians alike.

ACCURACY & SAVINGS

The NEW ADR-Auto V2.0 range, with 145mm (5.7") touch screen interface and intuitive menu driven operation reduces the time taken to set up the machine and perform tests, reducing the time to train staff by up to 25%. Most testing errors produce lower strength results. Noncompliant loading rates can generate errors in measured strength. With the latest closed-loop technology used in the ADR-Auto V2.0, the most effective cement ratios can be used with confidence.

TRACEABILITY & DATA QUALITY

The ADR-Auto V2.0 now provides improved data quality and traceability in due diligence cases - it is now possible to display traceability all the way from the machine/user to the accreditation body, increasing your reputation and peace of mind - all test results now come complete with the machine serial number attached. Prove your service quality - the ADR-Auto V2.0 now plots load vs time in real-time, proving full compliance to the testing standard. This data can be stored for later use or for detailed analysis of the concrete production.

USER SAFETY

Full safety gates as standard, total systems diagnostics, ram run-out switches and overload warnings ensure the safety of your employees and the reliability of your machine.

Specification

Testing Standards

BS EN 12390, BS EN 12390-3,
BS EN 12390-4, BS EN
12390-5, EN 12504-1, EN
1354, EN 1521, EN 3161, EN
1338, EN 772-6, EN 13286-41,
BS 3892-3, BS 187, BS 6717,
BS EN ISO 7500-1, ASTM E4

Capacity

3000 kN

Cubes (Concrete)

Up to 200 mm

Cylinders (Concrete)

Up to 160 x 320 mm

Blocks

Via optional Platen Handling
System

TFV and ACV

Yes

Voltage Supply

220-240 V 50 Hz 1 Ph

Frame Type

Welded

Max vert. Clearance

340 mm

Max hor. Clearance

355 mm

Platen Sizes

Lower 220mm sq,
Upper 300mm dia

Max Ram Travel

50 mm

Accessories



100 kN Flexural Fitting Kit ADR Auto for 220 - 240 V AC, 50 Hz, 1 ph

Code: [37-6135/01](#)



100 kN Flexural Fitting Kit ADR Auto for 220 - 240 V AC, 60 Hz, 1 ph

Code: [37-6135/06](#)



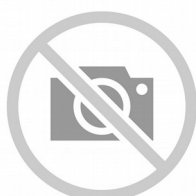
3000 kN Load Calibration Device Complete with Hand Held Readout Unit

Code: [37-8400](#)



300mm Lower Brick Platen

Code: [37-4842](#)



BS Block Platens & Platen Handling Assembly for 2000kN & 3000kN BS Frames.

Code: [37-4830](#)



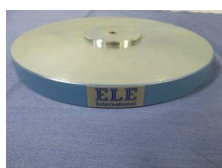
BS/EN Standard Rectangular Platen

Code: [37-4860](#)



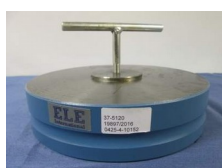
EN 12390-3/4 Distance Piece - 100 mm Depth

Code: [37-5180](#)



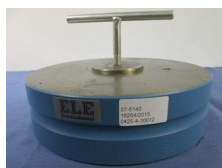
EN 12390-3/4 Distance Piece - 20 mm Depth

Code: [37-5110](#)



EN 12390-3/4 Distance Piece - 50 mm Depth

Code: [37-5120](#)



EN 12390-3/4 Distance Piece - 60 mm Depth

Code: [37-5140](#)



Flexible Hose

Code: [5038B0027](#)



Impact Printer Rs232 Serial Connection. Supplied Complete with 1 Paper Roll.

Code: [37-4859/01](#)

Spares/Consumables



Pressure transducer, 0-700bar, 0.05 to 10v DC Output

Code: [6014A0062](#)

Alternatives



ADR-Auto V2.0 2000 BS Compression Machine

Code: [36-4150/01](#)



ADR-Auto V2.0 2000 BS Compression Machine

Code: [36-4150/06](#)



ADR-Auto V2.0 3000 BS EN Compression Machine

Code: [36-4165/06](#)



Advanced SilverSchmidt Concrete Test Hammer

Code: 35-1500

Product Group: Surface Hardness

The SilverSchmidt ST/PC is the first integrated concrete test hammer featuring true rebound value and unmatched repeatability.

Two factors contribute to the improved performance of this concrete test hammer over its predecessors:

- Velocity based detection of the rebound quotient
- The lightweight hybrid design of the impact plunger is made from aerospace alloy, matched to the elastic properties of the concrete and equipped with a hardness steel cap

Independent validation testing by BAM (Federal Institute for Materials Research and Testing, Germany) has shown the SilverSchmidt ST/PC to have less dispersion than the classical concrete test hammer over the entire range.

The unique design and high quality construction of the concrete test hammer SilverSchmidt ST/PC makes rebound hammer testing quicker and more accurate than ever before.

NOT AVAILABLE FOR SALE IN THE USA

Further Information

- The SilverSchmidt ST/PC concrete test hammer combines a high measurement accuracy with an unmatched repeatability.
- The rebound value requires no angular correction
- The concrete test hammer offers customer conversion curves for a wide range of compressive concrete strengths, including low f_c (<10 N/mm², 1'450 psi) and high strength concrete (up to 100 N/mm², 14'500 psi)
- A large number of measurement points can be easily collected by the concrete test hammer and automatically evaluated according to statistical data
- The concrete test hammer offers automatic conversion to the required measurement unit (MPa,

N/mm², kg/cm², psi)

Specification

Technical Data	Silver Schmidt
Impact Energy	2.207 Nm
Hammer Mass	135 g
Spring Constant	0.79 N/mm
Spring Extension	75 mm (2.95")
Dimensions	55 x 55 x 255 mm (2.16" x 2.16" x 9.84")
Concrete Compressive Strengths	10-100 N/mm ² (1450-14500 psi)
Weight	570 g (1.4 lb)



Concrete Curing Tank

Code: [34-6763](#)

Product Group: [Concrete Curing Tanks](#)

182 Gal. capacity

Specification

Construction

20-gage sides with 20-gage bottom with zinc coating; rolled top for added stiffness; drain plug.

Dimensions

72" l. x 30" w. x 24" d. (1,829 x 762 x 610 mm).

Weights.

Net 90 lbs. (41 kg).

Accessories



Curing Tank Heater

Code: [34-6768/02](#)



Curing Tank Heater

Code: [34-6765/01](#)

Alternatives



Concrete Curing Tank

Code: 34-6763



Concrete Curing Tank

Code: 34-6764



Tilting Drum Concrete Mixer 120/90L/ (4/3Cu.Ft) Complete with Stand

Code: [34-3590/01](#)

Product Group: [Tilting Drum Mixer](#)

120/90 litre mixing capacity. For 220 - 240 V AC, 50 Hz, 1 ph.

Standards

EN 12390-2

Further Information

****NOT AVAILABLE FOR SALE IN THE USA****



Asphalt Flow Indicator with Brake - English

Code: [45-6892](#)

Product Group: [Marshall Stability Breaking Head](#),
[Asphalt Flow Indicator with Brake](#), [Accessories for the Marshall Test](#)

Standards

ASTM D6927, AASHTO T245

Specification

Holder	Cast aluminum.
Dial Indicator	Special type with brake.
Range	1.00" x 0.01" divisions.
Weight	Net 12 oz. (340 g).

Accessories



4" Marshall Breaking Head

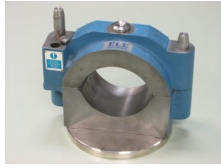
Code: [45-6855](#)



Asphalt Flow Indicator with Brake - Metric

Code: [45-6894](#)

Alternatives



4" Marshall Breaking Head

Code: 45-6855



Asphalt Flow Indicator with Brake - Metric

Code: 45-6894



Los Angeles Abrasion Machine with CE Safety Cabinet W/ Microswitches. 220-240V 50Hz 1Ph.

Code: [42-5310/01](#)

Product Group: [Los Angeles Abrasion Machine](#)

The machine consists of a closed hollow cylindrical steel drum rotating around its horizontal axis on ball bearing units mounted on a sturdy base framework. Also the full enclosure ensures noise is minimized.

The drum is driven at a speed of between 30 - 33 rpm via an enclosed belt drive arrangement from an electric motor/gearbox unit situated on the base frame. Inside the drum a full length steel shelf is attached, accessed by a dust-proof opening.

The cylinder incorporates a removable internal shelf, one shelf position is provided to meet the requirements of both the ASTM and EN test standards.

Controls are located easily on the right-hand side of the machine at convenient operator height.

Start and stop push buttons and a subtracting revolution counter allows the user to preset the number of revolutions before an automatic stop.

Standards

EN 1097-2, ASTM C131, ASTM C535, NF P18-573

Further Information

NOT AVAILABLE FOR SALE IN THE USA

Accessories

Set of 12 Abrasive Charges (ASTM).

Code: [42-5300/10](#)



Set of 12 Abrasive Charges EN)

Code: [42-5305/10](#)



Alternatives



Los Angeles Abrasion Machine Meets ASTM and European Standards. 220-240V 50Hz 1Ph.

Code: [42-5305/01](#)



50kN Clamped Boss Load Ring

Code: 78-0860

Product Group: Clamped Boss Load Rings, Digital Tritest 50 Load Frame, Load Measurement, Proving Rings, Accessories for the Marshall test, Accessories for the Marshall Test, CBR-Test 50 Machine, Load Measurement, CBR Loading Press, Hand-Operated, Force measurement

Calibrated in compression.

Standards

EN 12697-34

Specification

Capacity: kN, kgf, lbf	50.0, 5000, 11,200
Typical Design sensitivity: N/div, kgf/div, lbf/div	45.5, 4.54, 10.18
Overall height mm	248
Approx weight kg	7.9
Value of CBR	Above 40%
Capacity - kN	50
Capacity - kgf	5000
Capacity - lbf	11,200
Typical Design Sensitivity - kN/div	45.5
Typical Design Sensitivity - Kgf/div	4.54
Typical Design Sensitivity - lbf/div	10.18
Overall Height	9.76" (248 mm)
Approx Weight	17.4 lbs.(7.9 kg)

Accessories



Clamped Boss Load Ring - 10.0 kN

Code: 78-0460



Clamped Boss Load Ring - 2.0 kN

Code: [78-0060](#)



Clamped Boss Load Ring - 28.0 kN

Code: [78-0760](#)



Clamped Boss Load Ring - 3.0 kN

Code: [78-0160](#)



Clamped Boss Load Ring - 4.5 kN

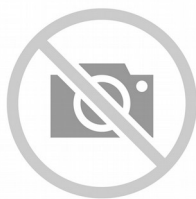
Code: [78-0260](#)



Digital Proving Ring, 11,200 lbs (50.0 kN)

Code: [78-0864](#)

Spares/Consumables



Spare Dial Indicator for Load Rings

Code: [78-5461](#)

Alternatives



Clamped Boss Load Ring - 10.0 kN

Code: [78-0460](#)



Clamped Boss Load Ring - 2.0 kN

Code: [78-0060](#)



Clamped Boss Load Ring - 28.0 kN

Code: [78-0760](#)



Clamped Boss Load Ring - 3.0 kN

Code: [78-0160](#)



Clamped Boss Load Ring - 4.5 kN

Code: [78-0260](#)



Digital Proving Ring, 11,200 lbs (50.0 kN)

Code: [78-0864](#)



Dial Indicator - 1.0" Range

Code: [88-4100](#)

Product Group: [Digital Tritest 50 Load Frame](#), [Hveem Stabilometer](#), [CBR-Test 50 Machine](#), [CBR Loading Press](#), [Hand-Operated](#), [Tripod Attachment](#), [Mechanical Dial Indicators](#), [Direct/Residual Shear Apparatus](#)

1.0" x 0.001" divisions.

Specification

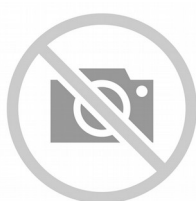
Range	1.0"
Divisions	0.001"
Movement	Clockwise
Face Diameter	2-1/4"
Contact Point	Immediate response, up or down; tip movement magnified to indicator hand with minimal friction; 3/16" (5 mm) radius x 1/4" (6 mm) l.
Dials	With continuous graduations and revolution counters.
Measure Movement	Measure movement towards dial case; pointer at zero with stem extended.
Weight	Net 12 oz. (340 g).

Accessories



1" Extension Point

Code: [88-4154](#)



1/2" Extension Point

Code: [88-4152](#)



1/4" Extension Point

Code: [88-4150](#)



3" Extension Point

Code: [88-4156](#)



Dial Indicator Holder

Code: [88-4194](#)



Mechanical Dial Indicator - 25 mm Range Clockwise Movement

Code: [88-4110](#)



Unconfined Compression Assembly Only

Code: [25-3999](#)

Spares/Consumables



Electronic Digital Indicator, 0.600\"/>

Code: [88-4210](#)

Alternatives



Electronic Digital Indicator, 0.600\"/>

Code: [88-4210](#)



Swell Plate

Code: [24-9260](#)

Product Group: [Expansion \(swell\) Test Equipment, Swell Plate](#)

With adjustable stem.

Standards

ASTM D1883, AASHTO T193

Specification

Base Plate	5 15/16" diam. (150.8mm); perforated.
Contact Head	Adjustable; locks on stem with knurled nut.
Construction	Aluminium
Weight	Net 2-1/2 lbs. (1.1 kg).



Rice Test Vibrator

Code: [45-9315/01](#)

Product Group: [Rice Test Vibrator](#), [Rice Test Vibrator](#)

The Rice Test Vibrator is used with the 45-9300 6000 g Vacuum Pyknometer. Adjustable clamps hold the pyknometer securely to the base during vibration.

Standards

EN 12697-5, ASTM D2041, AASHTO T209

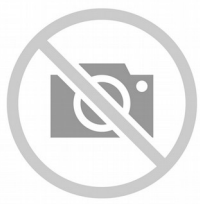
Further Information

For 220 - 240 V AC, 50 Hz, 1ph.

Specification

Dimensions	495 x 30 mm (height x base diameter)
Motor	1/20 hp, 1.6 amp
Weight	5.5 kg
Motor	1/20 h.p.; 3000 vpm; 1.6 amp.
Dimensions	19-1/2" (495 mm) h.; 12 " (30 mm) base diameter.
Weight	Net 14.3 lbs. (6.5 kg).

Accessories



Attachment Required for 6000 g

Code: [45-9315/10](#)

Alternatives



Rice Test Vibrator 115vAC, 50/60 Hz

Code: [45-9315/02](#)