



IF IT'S WORTH BUILDING, IT'S WORTH TESTING

This wishlist was generated on 19/05/2017, and contains the following Products:

---

35-1500

**Advanced SilverSchmidt Concrete Test Hammer**

---

34-6222/02

**Vibrating Table**

---

34-0110

**Slump Cone**

---

38-6004/02

**10" Motorized Flow Table**

---

34-0580

**K-slump Tester**

---

38-2015/01

**Automatic Vicat Apparatus**

---

38-1200

**Le Chatelier Flask**

---

36-4170/01

**ADR-Auto V2.0 BS EN 3000/250kN Compression Machine**

---

34-6764

**Concrete Curing Tank**

---

24-0540

**Cone Penetrometer. Complete with Stainless Steel Test Cone.**

---

88-4480NT

**Glass Laboratory Thermometer, -20° to 110°C x 1.0°; 12" (305 mm) l.**

---

81-0518

**Timer Clock**

---

82-0420

**Measuring Cylinder - Glass 250 ml**

---

82-0460

**Measuring Cylinder - Glass 500 ml**

---

# Contents

www.ele.com  
+44 (0) 01525 249 200



82-0500

**Measuring Cylinder - Glass 1000 ml**

---

82-0120

**Beaker - 100 ml**

---

82-0140

**Beaker - 250 ml**

---

82-0200

**Beaker - 600 ml**

---

82-0220

**Beaker - 1000 ml**

---

82-2170

**Desiccator - Vacuum**

---

23-3505

**Mortar and Pestle Porcelain.**

---

82-1970

**Evaporating Dish - 100 x 40 mm**

---

88-6710

**Evaporating Dish - 120 ml Capacity**

---

82-2000

**Evaporating Dish - 150 x 45 mm**

---

82-2010

**Evaporating Dish - 200 x 55 mm**

---

88-6712

**Evaporating Dish - 250 ml Capacity**

---

88-6714

**Evaporating Dish - 385 ml Capacity**

---

81-0590

**Vernier Caliper (LCD) Range 0 to 200mm X 0.01mm**

---



## Advanced SilverSchmidt Concrete Test Hammer

Code: 35-1500

Product Group: Surface Hardness

The SilverSchmidt ST/PC is the first integrated concrete test hammer featuring true rebound value and unmatched repeatability.

Two factors contribute to the improved performance of this concrete test hammer over its predecessors:

- Velocity based detection of the rebound quotient
- The lightweight hybrid design of the impact plunger is made from aerospace alloy, matched to the elastic properties of the concrete and equipped with a hardness steel cap

Independent validation testing by BAM (Federal Institute for Materials Research and Testing, Germany) has shown the SilverSchmidt ST/PC to have less dispersion than the classical concrete test hammer over the entire range.

The unique design and high quality construction of the concrete test hammer SilverSchmidt ST/PC makes rebound hammer testing quicker and more accurate than ever before.

\*NOT AVAILABLE FOR SALE IN THE USA\*

## Further Information

- The SilverSchmidt ST/PC concrete test hammer combines a high measurement accuracy with an unmatched repeatability.
- The rebound value requires no angular correction
- The concrete test hammer offers customer conversion curves for a wide range of compressive concrete strengths, including low  $f_c$  ( $<10$  N/mm<sup>2</sup>, 1'450 psi) and high strength concrete (up to 100 N/mm<sup>2</sup>, 14'500 psi)
- A large number of measurement points can be easily collected by the concrete test hammer and automatically evaluated according to statistical data
- The concrete test hammer offers automatic conversion to the required measurement unit (MPa,

N/mm<sup>2</sup>, kg/cm<sup>2</sup>, psi)

## Specification

Technical Data	Silver Schmidt
Impact Energy	2.207 Nm
Hammer Mass	135 g
Spring Constant	0.79 N/mm
Spring Extension	75 mm (2.95")
Dimensions	55 x 55 x 255 mm (2.16" x 2.16" x 9.84")
Concrete Compressive Strengths	10-100 N/mm <sup>2</sup> (1450-14500 psi)
Weight	570 g (1.4 lb)



## Vibrating Table

Code: [34-6222/02](#)

Product Group: [Vibrating Table](#)

Control panel included, but not shown

## Further Information

115vAC, 60 Hz, 1Ø. 100 Watts.

## Specification

Capacity	Up to 300 lbs (136 kg)
Deck	Cushioned steel; 20" w x 20" d (508 x 508 mm)
Vibrator	High-speed 3,600 vpm; electromagnetic
Control panel	Separate; includes operating switch, fuse, rectifying element and amplitude control dial.
Amplitude	Variable from 0 to 1/16" (1.58 mm) linear vibration.
Dimensions	20" w. x 20" d. x 10" h. (508 x 508 x 254 mm).
Weight	Net 175 lbs. (79 kg); Shpg. 200 lbs. (91 kg).

## Alternatives



## Laboratory Vibrator

Code: [34-6430/02](#)



## Slump Cone

Code: [34-0110](#)

Product Group: [Slump Test, Slump Cones](#)

Complies with EN 12350-2, ASTM C143 and AASHTO T119

## Standards

ASTM C143/C143M, ASTM C192, AASHTO T119

## Specification

Construction	Seamless, heavy-gauge spun steel; 0.45" (1.1 mm) min. Thickness.
Finish	Plated for rust and corrosion resistance.
Dimensions	100 mm top diam. X 200 mm bottom diam. (without foot pieces) x 300 mm h.
Weights	Net 5.5 lbs (2.5kg)

## Accessories



### 300 mm Stainless Steel Rule.

Code: [34-0140](#)



### Aluminium Scoop Large

Code: [81-0220](#)



## Base Plate for Slump Test.

Code: [34-0160](#)

---



## Cement Pan

Code: [34-0152](#)

---



## Graduated Tamping Rod

Code: [34-0132](#)

---



## Sample Tray - 1200 x 1160 x 50 mm

Code: [81-4230](#)

---



## Shovel - With flat blade

Code: [81-0240](#)

---



## Slump Cone Base

Code: [34-0150](#)

---



## Slump Cone Funnel

Code: [34-0180](#)



## Tamping Rod 16mm Dia X 600mm long hemispherical at both ends.

Code: [34-0130](#)

## Spares/Consumables



## Stopwatch

Code: [81-0521](#)

## Alternatives



## Metal Slump Cone - English

Code: [34-0108](#)



## 10" Motorized Flow Table

Code: [38-6004/02](#)

Product Group: [10" Flow Table](#)

Motorized, includes flow mold. Cast-bronze table for corrosion resistance and long life.

- Heavy-duty frame construction.
- Supplied complete with bronze flow mold.
- 110V 60Hz

## Further Information

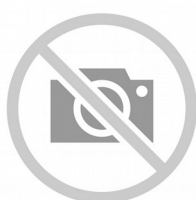
The Flow Table is designed in accordance with ASTM and AASHTO specifications for use in determining the flow of hydraulic cement mortars and cement pastes.

In operation the test specimen is molded on the table to a specified volume and shape. With the mold removed, the table is dropped a specified number of times. Upon completion of the test, the flow, (or increase in average diameter) is measured.

## Specification

Weight	5.58 kg
Shipping length	19 in
Shipping width	4.4 in
Shipping height	4.3 in
Electrical supply	110V, 60Hz, 1Ph.

## Accessories



### ASTM Calipers

Code: [38-6080](#)



### Flow Mould

Code: [38-6040](#)



## K-slump Tester

Code: [34-0580](#)

Product Group: [K-Slump Tester](#), [K-Slump Tester](#)

Developed to determine the workability of fresh concrete and the degree of concrete compaction placed in formwork. The apparatus can be used for in-place measurements of concrete in test moulds and forms and may be correlated to the standard slump test. It is simple, economical to use and reduces testing time. No special calibration is required.

## Specification

Construction

Nickel Plated Steel. Calibrated 3/4" (19 mm) diam. Hollow tube; pointed insertion end; round disc controls depth of penetration.

Openings

Two groups through which concrete enters.

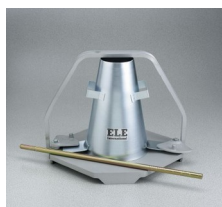
Test time

60 seconds

Weight

450 g

## Alternatives



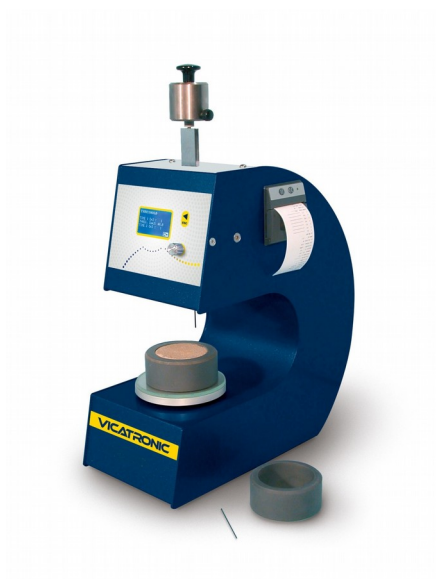
## Portable Slump Test Set

Code: [EL3010E](#)



## Slump Test Set

Code: [EL3020E](#)



## Automatic Vicat Apparatus

Code: [38-2015/01](#)

Product Group: [Automatic Vicat](#)

Complete with EN and ASTM Initial and Final needles, Consistency Plunger, Windows(R) software and RS232 cable, 1 x EN and ASTM Mould and Glass Plate. Suitable for continuous use in saturated humidity, at a controlled temperature of  $20^{\circ}\text{C} \pm 1^{\circ}\text{C}$ .

## Standards

ASTM C187, ASTM C191

## Further Information

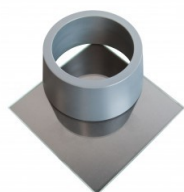
**\*\*NOT AVAILABLE FOR SALE IN THE USA\*\***

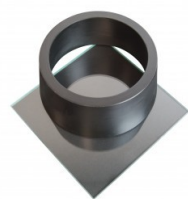
For 220 - 240 V AC, 50 - 60 Hz, 1 ph.

## Accessories

### ASTM Vicat Mould

Code: [38-2660](#)





## EN Vicat Mould

Code: [38-2300](#)



## Mould Tank

Code: [38-2015/15](#)



## Needle Cleaning Device

Code: [38-2015/12](#)



## Printer Paper Rolls

Code: [38-2015/14](#)



## Vicat Mould

Code: [38-2200](#)

## Spares/Consumables



### ASTM Initial and Final Set Needle

Code: [38-2023](#)



### Consistency Plunger

Code: [38-2015/16](#)



### EN Initial and Final Set Needle

Code: [38-2021](#)



## Le Chatelier Flask

Code: [38-1200](#)

Product Group: [Le Chatelier Flask, Specific Gravity \(relative density\) of Hydration Cement](#)

For determining the density of hydraulic cement and lime, supplied complete with calibration certificate. Capacity 250ml. Graduated from 0 to 1ml and from 18 to 24ml graduations. Accurate to 0.05ml.

## Standards

EN 196-6, ASTM C128, ASTM C188, E 694, AASHTO T133

## Specification

Graduations

Zero mark represents 250 ml, the capacity of the large bulb; neck graduations from 0-1 ml in 0.1 ml divisions with two extra 0.1 ml graduations above the 1.0 and below the 0 marks; bulb portion of neck holds 17 ml; top portion of neck graduated from 18-24 ml in 0.1 ml divisions; 24 ml capacity.

Stopper

Ground glass.

Weight

Net 8 oz. (227 g).

## Accessories



## Chattaway Spatula 125 mm

Code: [81-0180](#)



## Electronic Balance - 620 g x 0.001 g

Code: [78-5405/01](#)



## Water Bath - 12 litres

Code: [82-8500/01](#)



## ADR-Auto V2.0 BS EN 3000/250kN Compression Machine

Code: 36-4170/01

Product Group: Dual Frame Compression Machines

- 3000/250 kN capacity
- Meets requirements of EN 12390-3, -4, -12504-1, 1354, 1521, 13161, 1338 772- 1, -6, 13286-41 196- 1 459-2. BS 3892-3, 187
- Concrete and cement specimens
- Tests 200, 150, 100, 70.7, 50 and 40 mm cubes and cylinders up to 320 x 160 mm diameter
- Calibration accuracy and repeatability conforms to BS EN ISO 7500-1; ASTM E4
- Supplied with Windows(R) download software as standard

Designed to provide comprehensive test facilities, this twin-frame compression machine is controlled by the automatic console. The 3000 kN capacity frame meets the requirements of EN Standards and accepts the range of on-board accessories.

As the second outlet control port is connected to the 250 kN load frame, attachment of a flexural frame is not possible. The 250 kN frame is supplied complete with compression jig, 40 mm, 50 mm/2.0 inch square platens and meets the requirements of EN 196-1.

When selecting the frame to be used for testing the automatic changeover valve incorporated in the system delivers the hydraulic fluid to that frame.

## Standards

EN 12350-6, EN 196-1

## Further Information

**\*\*Not available for sale in the USA\*\***

220-240V 50Hz 1Ph.

## Specification

	Frame 1	Frame 2
Frame	EN 12390	EN 196
Standards	Welded	Welded
Frame Type	3000 kN	250 kN
Capacity	340 mm	230 mm
Max Vert. Clearance	310 mm	160 mm
Max Hor. Clearance		150 mm dia.
Platen Size		

	Lower 220 mm sq. Upper 300 mm dia.	
Max Ram Travel	50 mm	15 mm
Samples		
Cube Sample Size	Up to 200 mm	-
Cylinder Sample Size	Up to 160 x 320 mm	Up to 100 mm
Blocks	Via optional Platen Handling System	n/a
40 mm, 50 mm (2") Cubes	n/a	Yes
40.1 x 40 x 160 mm (Compression)	n/a	Yes
TFV & ACV	Yes	n/a
Hydraulics		
Rapid Approach	Yes	Not Required
Hydraulic Pump	Variable Output	Variable Output
Data Comms		
Printer, PC Download, USB, RS232	Yes	Yes
Screen		
145 mm (5.7") Touch Screen w/ Graphical Display	Yes	Yes
Platens		
3rd Party Certified	Yes	Yes
Misc		
Sample Alignment	Location Fixtures	Location Fixtures
Pace Rate Indicator	Yes	Yes
Load Time v Goodness of Test	Yes	Yes
Analysis of Trend Data	Yes	Yes
Memory of Test Results	Yes	Yes

## Accessories



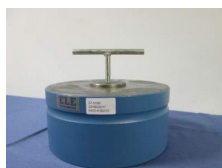
### 100 kN Flexural Fitting Kit ADR Auto for 220 - 240 V AC, 50 Hz, 1 ph

Code: [37-6135/01](#)



### 100 kN Flexural Fitting Kit ADR Auto for 220 - 240 V AC, 60 Hz, 1 ph

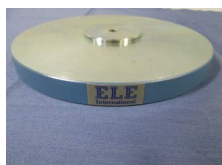
Code: [37-6135/06](#)



## EN 12390-3/4 Distance Piece - 100 mm Depth

Code: [37-5180](#)

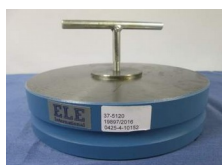
---



## EN 12390-3/4 Distance Piece - 20 mm Depth

Code: [37-5110](#)

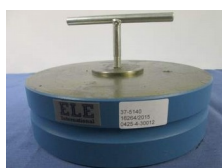
---



## EN 12390-3/4 Distance Piece - 50 mm Depth

Code: [37-5120](#)

---



## EN 12390-3/4 Distance Piece - 60 mm Depth

Code: [37-5140](#)

---



## Flexible Hose

Code: [5038B0027](#)

---



## Impact Printer Rs232 Serial Connection. Supplied Complete with 1 Paper Roll.

Code: [37-4859/01](#)

---

## Spares/Consumables



## Pressure transducer, 0-700bar, 0.05 to 10v DC Output

Code: [6014A0062](#)

---

### Alternatives



## ADR-Auto V2.0 BS EN 2000/250kN Compression Machine

Code: [36-4155/01](#)



## Concrete Curing Tank

Code: [34-6764](#)

Product Group: [Concrete Curing Tanks](#)

300 Gal. capacity

## Specification

Construction

20-gage sides with 20-gage bottom with zinc coating; rolled top for added stiffness; drain plug.

Dimensions

96" l. x 36" w. x 24" d. (2,438 x 914 x 610 mm).

Weights.

Net 130 lbs. (59 kg).

## Accessories



### Curing Tank Heater

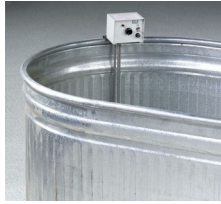
Code: [34-6765/01](#)



### Curing Tank Heater

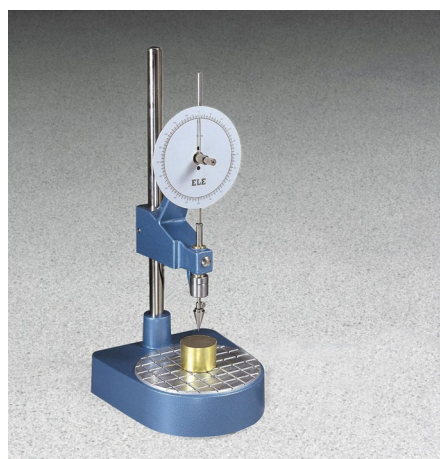
Code: [34-6768/02](#)

## Alternatives



## Concrete Curing Tank

Code: [34-6763](#)



## Cone Penetrometer. Complete with Stainless Steel Test Cone.

Code: [24-0540](#)

Product Group: [Cone Penetrometer Method, Cone Penetrometer](#)

Bench mounted apparatus to determine the liquid limit of soils BS1377. This method is applicable to a wide range of soils. The apparatus is fitted with a 150mm diameter dial indicator for direct reading of penetration. Supplied complete with 30deg, 30mm long test cone. Manufactured from stainless steel and includes adjustable levelling feet.

## Standards

BS 1377-2

## Specification

Dial Indicator	150 mm diameter graduated in 400 x 0.1 mm divisions, indicator point incorporates friction/gear system
Height Adjustment	Rapid, using integral clamping mechanism
Cone release	Manual
Cone	1 x 30°, 35 mm test cone included
Base	Cast aluminium, adjustable levelling feet
Weight kg	7

## Accessories



### Penetration Test Cup.

Code: [24-0548](#)



## Test Gauge for Checking Condition of Cone Point.

Code: [24-0546](#)

---

## Spares/Consumables



## Penetration Test Cone

Code: [24-0544](#)

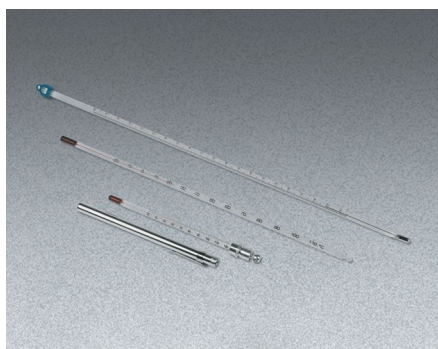
---

## Alternatives



## Semi-Automatic Cone Penetrometer

Code: [24-0545/01](#)



## Glass Laboratory Thermometer, -20° to 110°C x 1.0°; 12" (305 mm) l.

Code: [88-4480NT](#)

Product Group: [Glass Laboratory Thermometers](#)

Non-Toxic

## Specification

Weight

Net 3 oz. (85 g).

## Alternatives



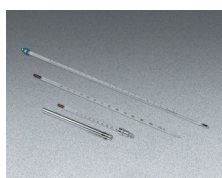
### Armored Thermometer, 20° to 120°F x 1.0°

Code: [88-4472NT](#)



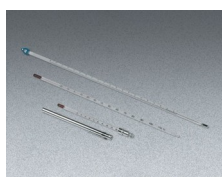
### Armored Thermometer, 50° to 440°F x 5.0°

Code: [88-4474](#)



## Glass Laboratory Thermometer - -30° to 120°F x 1.0°; 12" (305 mm) l.

Code: [88-4490](#)



## Glass Laboratory Thermometer, -20° to 150°C x 1.0°; 12" (305 mm) l.

Code: [88-4482NT](#)





## Timer Clock

Code: [81-0518](#)

Product Group: [Rice Test Vibrator](#), [Watches and Clocks](#)

Accessory

## Standards

EN 12697-5

## Further Information

**\*\*NOT AVAILABLE FOR SALE IN THE USA\*\***



## Measuring Cylinder - Glass 250 ml

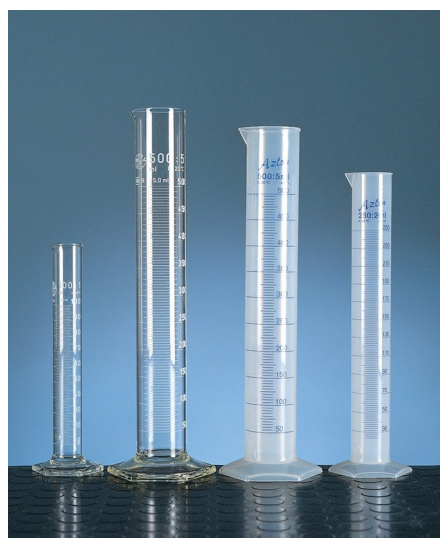
Code: [82-0420](#)

Product Group: [Measuring Cylinders, BS](#)

Soda glass, spouted, BS EN 4788.

## Further Information

**\*\*NOT AVAILABLE FOR SALE IN THE USA\*\***



## Measuring Cylinder - Glass 500 ml

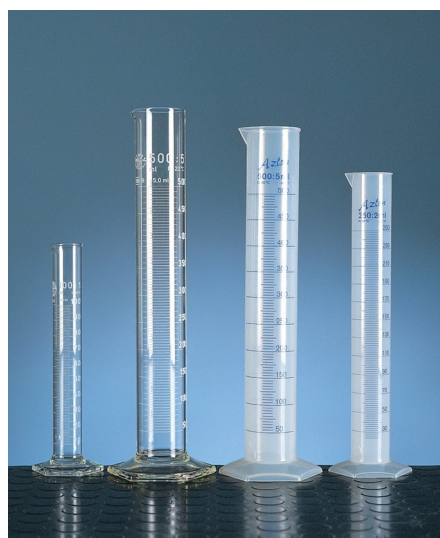
Code: [82-0460](#)

Product Group: [Measuring Cylinders, BS](#)

Soda glass, spouted, BS EN 4788.

## Further Information

**\*\*NOT AVAILABLE FOR SALE IN THE USA\*\***



## Measuring Cylinder - Glass 1000 ml

Code: [82-0500](#)

Product Group: [Measuring Cylinders, BS](#)

Soda glass, spouted, BS EN 4788.

## Further Information

**\*\*NOT AVAILABLE FOR SALE IN THE USA\*\***



## Beaker - 100 ml

Code: [82-0120](#)

Product Group: [Beakers and Covers](#)

Borosilicate glass, squat form.

## Further Information

**\*\*NOT AVAILABLE FOR SALE IN THE USA\*\***



## Beaker - 250 ml

Code: [82-0140](#)

Product Group: [Beakers and Covers](#)

Borosilicate glass, squat form.

## Further Information

**\*\*NOT AVAILABLE FOR SALE IN THE USA\*\***



## Beaker - 600 ml

Code: [82-0200](#)

Product Group: [Beakers and Covers](#)

Borosilicate glass, squat form.

## Further Information

**\*\*NOT AVAILABLE FOR SALE IN THE USA\*\***



## Beaker - 1000 ml

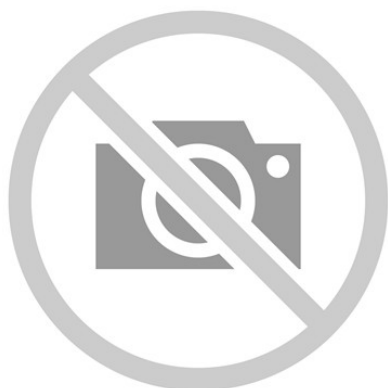
Code: [82-0220](#)

Product Group: [Beakers and Covers](#)

Borosilicate glass, squat form.

## Further Information

**\*\*NOT AVAILABLE FOR SALE IN THE USA\*\***



## Desiccator - Vacuum

Code: [82-2170](#)

Product Group: [Desiccators](#)

280 mm internal diameter, soda glass. Supplied with perforated zinc disc and stopcock.

## Further Information

**\*\*NOT AVAILABLE FOR SALE IN THE USA\*\***



## Mortar and Pestle Porcelain.

Code: [23-3505](#)

Product Group: [Sample Reduction](#)

Thick walled porcelain mortar; 107mm internal diameter and porcelain pestle.

## Alternatives



## Heat of Hydration Apparatus

Code: [38-4600/06](#)



## Heat of Hydration Apparatus

Code: [38-4600/01](#)



## Rubber Headed Pestle.

Code: [23-3500](#)



## Evaporating Dish - 100 x 40 mm

Code: [82-1970](#)

Product Group: [Evaporating Dishes](#)

Shallow form with spout, porcelain 100 x 40 mm  
nominal diameter x height.

## Further Information

**\*\*NOT AVAILABLE FOR SALE IN THE USA\*\***



## Evaporating Dish - 120 ml Capacity

Code: [88-6710](#)

Product Group: [Evaporating Dishes](#)

90 mm diam.; 120 ml capacity.

## Alternatives



## Evaporating Dish - 1.285 ml Capacity

Code: [88-6718](#)



## Evaporating Dish - 250 ml Capacity

Code: [88-6712](#)



## Evaporating Dish - 385 ml Capacity

Code: [88-6714](#)



## Evaporating Dish - 765 ml Capacity

Code: [88-6716](#)



## Evaporating Dish - 150 x 45 mm

Code: [82-2000](#)

Product Group: [Evaporating Dishes, Volumetric Shrinkage](#)

Shallow form with spout, porcelain 150 x 45 mm nominal diameter x height.

## Further Information

**\*\*NOT AVAILABLE FOR SALE IN THE USA\*\***



## Evaporating Dish - 200 x 55 mm

Code: [82-2010](#)

Product Group: [Evaporating Dishes](#)

Shallow form with spout, porcelain 200 x 55 mm  
nominal diameter x height.

## Further Information

**\*\*NOT AVAILABLE FOR SALE IN THE USA\*\***



## Evaporating Dish - 250 ml Capacity

Code: [88-6712](#)

Product Group: [Evaporating Dishes, Bitumen Extraction Test](#)

250 ml

## Specification

Construction Porcelain; with lip.

## Alternatives



## Evaporating Dish - 1.285 ml Capacity

Code: [88-6718](#)



## Evaporating Dish - 120 ml Capacity

Code: [88-6710](#)



## Evaporating Dish - 385 ml Capacity

Code: [88-6714](#)



## Evaporating Dish - 765 ml Capacity

Code: [88-6716](#)



## Evaporating Dish - 385 ml Capacity

Code: [88-6714](#)

Product Group: [Evaporating Dishes](#)

145 mm diam.; 385 ml capacity.

## Alternatives



## Evaporating Dish - 1.285 ml Capacity

Code: [88-6718](#)



## Evaporating Dish - 120 ml Capacity

Code: [88-6710](#)



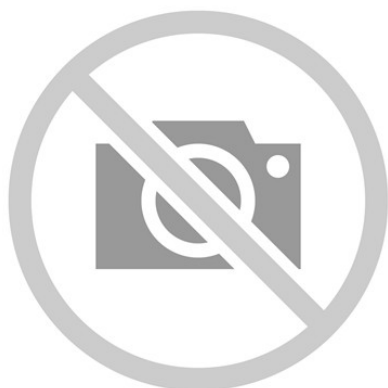
## Evaporating Dish - 250 ml Capacity

Code: [88-6712](#)



## Evaporating Dish - 765 ml Capacity

Code: [88-6716](#)



## Vernier Caliper (LCD) Range 0 to 200mm X 0.01mm

Code: [81-0590](#)

Product Group: [Determination of the Shape Index,](#)  
[Miscellaneous Laboratory Hardware](#)

Dual measuring range highly accurate vernier caliper 0 to 200mm x 0.01mm (8 inch x 0.001 inch) to comply with bs 887 and bs 6365. Complete with liquid crystal display.

## Standards

EN 933-4

## Further Information

**\*\*NOT AVAILABLE FOR SALE IN THE USA\*\***

## Accessories



### Vibrating Hammer

Code: [47-0455/01](#)

## Alternatives



### Vibrating Hammer

Code: [47-0455/01](#)