



IF IT'S WORTH BUILDING, IT'S WORTH TESTING

This wishlist was generated on 01/06/2017, and contains the following Products:

27-1505

8-Channel Expansion Analog Input Module

27-1689

Vertical Displacement Transducer Assembly 15mm Travel with 5 Pin Din Plug Bracket for Shear Box

27-1697

Horizontal Displacement Transducer Assembly 15mm Travel 5 Pin Din Plug Mounting Pillar

27-1717

Transducer Extension Cable 3.0 m

27-1793

DS7.2 Direct and Residual Shear Strength Program for Windows 7, 32/64 bit

27-1773

DS7.2 One-Dimensional Consolidation Program for Windows 7, 32/64 bit

27-1617

Axial Strain Transducer Assembly 50mm Travel Fitted with 5 Pin Din Plug.

34-6250/01

Vibrating Table 600 X 400mm Table Top. 220-240V 50Hz 1Ph. Supplied with clamping assembly

24-9095/01

Automatic Soils Compactor ASTM 220-240V 50Hz 1Ph.

24-9198

BS Cbr Mould Body.

24-9200

BS Extension Collar

24-9204

BS Solid Base or Top Plate

24-9060

Proctor Mould

25-7655

100 mm Two-Part Split Mould

25-3700/01

MultiPlex 50 Load Frame

25-3650

Unconfined Compression Platens. for Use on Ele Load Frames Max Sample Dia 95mm.

78-0260

Clamped Boss Load Ring - 4.5 kN

78-0860

50kN Clamped Boss Load Ring

78-0460

Clamped Boss Load Ring - 10.0 kN

25-5530

Two Part Split Mould 50mm

25-5500

Two-Way Split Former 50mm Diameter.

81-0588

Vernier Caliper Range 0 to 200mm X 0.02mm.

29-3800

Plate Bearing Apparatus Complete. 500kN Capacity

70-0095/01

Rock Core Drill Supplied with 2 X Nx Core Drill Bit

70-0250/01

Gsp210/250 Core Trimmer & Cut Off Machine Supplied with Coolant Pump Unit

70-1710

ELE-Hoek Cell Nx 54.74mm Diameter.

70-1712

Spare Jacket Nx Size.

70-2725

Specimen Extruder Bench Mounting Frame for Extruding Specimens From Hoek Cells

70-5000

Hand Operated Pressure System. Complete with Pressure Gauge and Flexible Hose.

70-1750

Pair of Permeability End Caps Nx. Supplied with Distance Block.

70-5130/01

Pressure Test 3500 Oil/Water Constant Pressure System with Digital Pressure Gauge.

26-1926

Nylon Tubing 6mm Od 3500Kpa.

35-1500

Advanced SilverSchmidt Concrete Test Hammer

70-2630/01

ELE-Hoek Cell ADR Touch 2000 Compression Machine. 220 - 240 V 50/60H z

37-5110

EN 12390-3/4 Distance Piece - 20 mm Depth

37-5120

EN 12390-3/4 Distance Piece - 50 mm Depth

24-9010

Straight Edge 300mm.

81-0590

Vernier Caliper (LCD) Range 0 to 200mm X 0.01mm

82-5420

Digital Pocket Thermometer

82-5442

Digital Thermometer

506-150

Hand-Held Thermo Hygrometer

81-0518

Timer Clock

25-1833/01

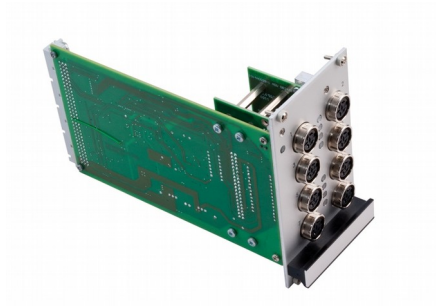
De-Aired Water Apparatus 15 Litre Capacity

25-3518/01

Digital Tritest 50 Load Frame

25-4157

100mm Triaxial Cell 1700Kpa with 5 Pressure/ Drainage Ports. Supplied with Two Valves.



8-Channel Expansion Analog Input Module

Code: [27-1505](#)

Product Group: [Geotechnical Data Acquisition Unit \(GDU\)](#)



Vertical Displacement Transducer Assembly 15mm Travel with 5 Pin Din Plug Bracket for Shear Box

Code: 27-1689

Product Group: [Displacement Measurement, Measurement of Horizontal and Vertical Movement, Displacement Transducers](#)

0 to 10 mm range. For use with Direct/Residual Shear Machines. •Ideally suited for use with GDU for accurate displacement measurements

- Models available for use in consolidation, shear, CBR and triaxial test applications
- Supplied complete with mounting hardware for specified products

Displacement Transducers are used in consolidation, shear, CBR and triaxial test applications for accurate displacement measurements. They are supplied complete with a 5-pin DIN type connector for direct connection to the GDU.

Specification

Construction	Fully encapsulated electronics, sealed in a stainless steel case
Excitation	12 V DC
Connector	5-pin DIN type
Mounting bracket	Included as standard
Weight kg	0.45
Construction	Fully encapsulated electronics, sealed in a stainless steel case.
Excitation	10vDC.
Connector	5-Pin DIN type.
Mounting Bracket	Included as standard.
Weight	Net 1 lb. (0.45 kg).

Accessories



Axial Strain Transducer Assembly 50mm Travel Fitted with 5 Pin Din Plug.

Code: 27-1617



Horizontal Displacement Transducer Assembly 15mm Travel 5 Pin Din Plug Mounting Pillar

Code: 27-1697

Spares/Consumables



CBR Displacement Transducer

Code: 27-1706

Alternatives



Axial Strain Transducer Assembly 50mm Travel Fitted with 5 Pin Din Plug.

Code: 27-1617



Horizontal Displacement Transducer Assembly 15mm Travel 5 Pin Din Plug Mounting Pillar

Code: [27-1697](#)



Horizontal Displacement Transducer Assembly 15mm Travel 5 Pin Din Plug Mounting Pillar

Code: [27-1697](#)

Product Group: [Displacement Measurement, Measurement of Horizontal and Vertical Movement, Displacement Transducers](#)

- Ideally suited for use with GDU for accurate displacement measurements
- Models available for use in consolidation, shear, CBR and triaxial test applications
- Supplied complete with mounting hardware for specified products

Displacement Transducers are used in consolidation, shear, CBR and triaxial test applications for accurate displacement measurements. They are supplied complete with a 5-pin DIN type connector for direct connection to the GDU.

Specification

Construction	Fully encapsulated electronics, sealed in a stainless steel case
Excitation	13 V DC
Connector	5-pin DIN type
Mounting bracket	Included as standard
Weight kg	0.45
Construction	Fully encapsulated electronics, sealed in a stainless steel case.
Excitation	10vDC.
Connector	5-Pin DIN type.
Mounting Bracket	Included as standard.
Weight	Net 1 lb. (0.45 kg).

Accessories



Axial Strain Transducer Assembly 50mm Travel Fitted with 5 Pin Din Plug.

Code: [27-1617](#)



Vertical Displacement Transducer Assembly 15mm Travel with 5 Pin Din Plug Bracket for Shear Box

Code: [27-1689](#)

Spares/Consumables



CBR Displacement Transducer

Code: [27-1706](#)

Alternatives



Axial Strain Transducer Assembly 50mm Travel Fitted with 5 Pin Din Plug.

Code: [27-1617](#)



Vertical Displacement Transducer Assembly 15mm Travel with 5 Pin Din Plug Bracket for Shear Box

Code: [27-1689](#)



Transducer Extension Cable 3.0 m

Code: [27-1717](#)

Product Group: [Extension cables, Transducer Extension Cable](#)

Wired with a 5-pin DIN plug at one end and 5-pin DIN type socket at the other, these extension cables are used to increase the length of any GDU/ECU transducer cable.

Accessories



Axial Strain Transducer Assembly 50mm Travel Fitted with 5 Pin Din Plug.

Code: [27-1617](#)



Distance Piece Stainless Steel for Use with Submersible Load Cells and Axial Strain Transducers.

Code: [27-1293](#)



Horizontal Displacement Transducer Assembly 15mm Travel 5 Pin Din Plug Mounting Pillar

Code: [27-1697](#)



Pressure Transducer Assembly 1700Kpa Fitted with 5 Pin DIN Plug.

Code: 27-1633



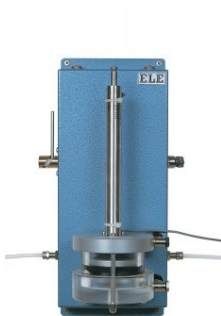
Submersible Load Transducer Assembly 5kN Capacity In Compression.

Code: 27-1573



Vertical Displacement Transducer Assembly 15mm Travel with 5 Pin Din Plug Bracket for Shear Box

Code: 27-1689



Volume Change Transducer Assembly 80ml Capacity Maximum Working Pressure 1700KPa

Code: 27-1641

Spares/Consumables



CBR Displacement Transducer

Code: [27-1706](#)

Alternatives



Consolidation Transducer Assembly 10mm Travel Fitted with 5 Pin Din Plug.

Code: [27-1649](#)



S-Type Load Cell 10,000 lb Capacity

Code: [27-1587](#)



S-Type Load Cell 2,000 lb Capacity

Code: [27-1583](#)



S-Type Load Cell 500 lb Capacity

Code: [27-1581](#)



DS7.2 Direct and Residual Shear Strength Program for Windows 7, 32/64 bit

Code: [27-1793](#)

Product Group: [DS7](#), [DS7.2 Direct/Residual Shear Software](#), [Automatic Data Acquisition - Direct Shear](#)

This unique package provides test options for quick undrained or drained shear tests with the user selectable option of residual testing. Individual test results can be linked together to produce the Coulomb Envelope. Printouts and plots are available for sample description and basic test data such as moisture content, etc. Realtime plots of settlement, shear versus displacement and vertical displacement during shearing is readily available via the PC screen or printer.



DS7.2 One-Dimensional Consolidation Program for Windows 7, 32/64 bit

Code: [27-1773](#)

Product Group: [DS7, DS7.2 One-Dimensional Consolidation Software](#)

DS7.1 Consolidation Software provides all basic functions needed to record and analyse consolidation test data. Options are available for monitoring settlement on a log time or square-root time basis. Printouts and graphical plots are available for all stages including Mv and Cv moisture content, voids ratio plots, and initial sample conditions.



Axial Strain Transducer Assembly 50mm Travel Fitted with 5 Pin Din Plug.

Code: [27-1617](#)

Product Group: [Axial Displacement](#), [Axial Displacement](#), [Displacement Transducers](#)

0 to 50 mm range. For use with Triaxial Cells.

- Ideally suited for use with GDU for accurate displacement measurements
- Models available for use in consolidation, shear, CBR and triaxial test applications
- Supplied complete with mounting hardware for specified products

Displacement Transducers are used in consolidation, shear, CBR and triaxial test applications for accurate displacement measurements. They are supplied complete with a 5-pin DIN type connector for direct connection to the GDU.

Specification

Construction	Fully encapsulated electronics, sealed in a stainless steel case
Excitation	10V DC
Connector	5-pin DIN type
Mounting bracket	Included as standard
Weight kg	0.45

Accessories



Horizontal Displacement Transducer Assembly 15mm Travel 5 Pin Din Plug Mounting Pillar

Code: [27-1697](#)



Vertical Displacement Transducer Assembly 15mm Travel with 5 Pin Din Plug Bracket for Shear Box

Code: [27-1689](#)

Spares/Consumables



CBR Displacement Transducer

Code: [27-1706](#)

Alternatives



Horizontal Displacement Transducer Assembly 15mm Travel 5 Pin Din Plug Mounting Pillar

Code: [27-1697](#)



Vertical Displacement Transducer Assembly 15mm Travel with 5 Pin Din Plug Bracket for Shear Box

Code: [27-1689](#)



Vibrating Table 600 X 400mm Table Top. 220-240V 50Hz 1Ph. Supplied with clamping assembly

Code: [34-6250/01](#)

Product Group: [Vibrating Table](#)

Vibrating table mounted on a steel stand, supplied with clamp assembly.

Standards

EN 12390-2, EN 12350-6, EN 12350-7

Further Information

****NOT AVAILABLE FOR SALE IN THE USA****

3000 cycles per minute. For 220 - 240 V AC, 50 Hz, 1 ph.

Specification

Dimensions (table top)	600 x 400 mm
Maximum no. Cube moulds	2 x 150 mm ²
Clamp Assembly	Single
Weight	60 kg

Accessories



Compacting Bar 25mm Sq X 380mm

Code: [34-2910](#)



Wire Brush

Code: [81-0705](#)

Alternatives



100 X 100 X 500mm Beam Mould.

Code: [34-5003](#)



100mm Cube Mould 2-Part Clamp Type. Cast Iron Construction. BS EN Compliant.

Code: [34-4650](#)



100mm Cube Mould 4-Part Clamp Type. Cast Iron Construction. BS EN Compliant.

Code: [34-4520](#)



100mm Dia Cylinder Mould 200mm Long.

Code: [34-5210](#)



150 X 150 X 750mm Beam Mould.

Code: [34-5053](#)



150mm Cube Mould 2-Part Clamp Type. Cast Iron Construction. BS EN Compliant.

Code: [34-4670](#)



150mm Cube Mould 4-Part Clamp Type. Cast Iron Construction. BS EN Compliant.

Code: [34-4570](#)



150mm Dia Cylinder Mould 150mm Long.

Code: [34-5230](#)



150mm Dia Cylinder Mould 300mm Long.

Code: [34-5260](#)



**200mm Cube Mould Clamp Type. Cast Iron Construction.
Stamped Mould Sections. EN Compliant.**

Code: [34-4620](#)



Automatic Soils Compactor ASTM 220-240V 50Hz 1Ph.

Code: [24-9095/01](#)

Product Group: [Automatic Compactors](#), [Automatic Soil Compactor](#)

Standards

ASTM D558, ASTM D559, ASTM D560, ASTM D698, ASTM D1557, AASHTO T99, AASHTO T134, AASHTO T135, AASHTO T136, AASHTO T180, AASHTO T193

Specification

Hammer	Circular faced, 2.0" (50.8 mm) dia. foot; selectable to either 5.5 lb.(2.5 kg) or 10 lb. (4.5 kg) weight.
Drop	Adjustable to either 12 " (305 mm) or 18" (457 mm)
Controls	Digital counter system, selector switch for either standard proctor test or modified proctor/CBR testing.
Dimensions	10" w. x 17" d. x 55 " h. (250 x 430 x 1,400 mm).
Weight	Net 41.9 lbs. (190 kg).

Accessories



ASTM Compaction Mould 152mm.

Code: [24-9066](#)



Calibration Kit For Automatic Soil Compactor

Code: [24-9095/12](#)



Proctor Mould

Code: [24-9060](#)

Spares/Consumables



Lead Cylinders

Code: [24-9095/13](#)



Modified Compaction Mould

Code: [24-9098](#)



Standard Compaction Mould

Code: [24-9097](#)

Alternatives



Automatic Soil Compactor ASTM 110-120V 60Hz 1Ph

Code: [24-9095/02](#)



Automatic Soils Compactor ASTM 220-240V 60Hz 1Ph.

Code: [24-9095/06](#)



BS Cbr Mould Body.

Code: 24-9198

Product Group: BS EN CBR mould, Accessories for
BS compaction and CBR

Standards

ASTM D1883, AASHTO T193

Specification

Mould	152 x 127 mm (inside diameter x height)
Collar	51 mm height, fits both ends of mould
Base plate	Solid, fits both ends of mould
Construction	All steel, plated
Weight kg	7.3



BS Extension Collar

Code: [24-9200](#)

Product Group: [BS EN CBR mould accessories](#),
[Accessories for BS compaction and CBR](#)

Standards

EN 13286-4, BS 1377-4, BS 1924-2



BS Solid Base or Top Plate

Code: [24-9204](#)

Product Group: [BS EN CBR mould accessories](#),
[Accessories for BS compaction and CBR](#)

Standards

EN 13286-4, BS 1377-4, BS 1924-2

Accessories



2Kg Annular Surcharge Weight

Code: [24-9214](#)



Base Plate Tool for BS Mould

Code: [24-9210](#)



BS Perforated Base Plate.

Code: [24-9202](#)



Cbr Cutting Collar with Area Ratio of 21.9% to Fit BS Moulds.

Code: [24-9206](#)



Filter Papers 150mm Dia Equivalent to Whatman No 1. Box of 100.

Code: [24-9220](#)

Alternatives



2Kg Annular Surcharge Weight

Code: [24-9214](#)



Base Plate Tool for BS Mould

Code: [24-9210](#)



BS Perforated Base Plate.

Code: [24-9202](#)



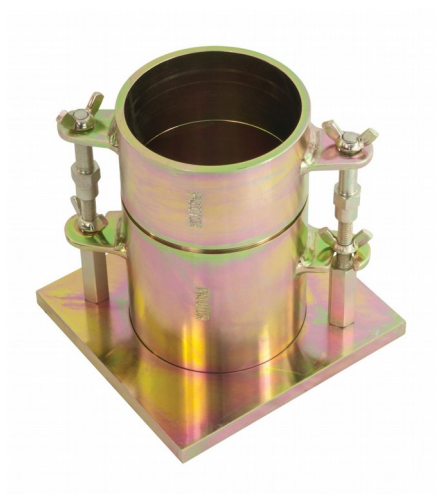
Cbr Cutting Collar with Area Ratio of 21.9% to Fit BS Moulds.

Code: [24-9206](#)



Filter Papers 150mm Dia Equivalent to Whatman No 1. Box of 100.

Code: [24-9220](#)



Proctor Mould

Code: [24-9060](#)

Product Group: [Accessories for ASTM and Proctor compaction](#), [Proctor compaction](#)

Standards

ASTM D558, ASTM D559, ASTM D560, ASTM D698, ASTM D1557, AASHTO T99, AASHTO T134, AASHTO T135, AASHTO T136, AASHTO T180

Specification

Dimensions	101.6 mm dia x 116.4 mm high
Rammer Mould Volume	1/30 ft ³
Construction	All steel, threaded studs with wing nuts, plated.
Weight	5.4 kg



100 mm Two-Part Split Mould

Code: [25-7655](#)

Product Group: [Two-Part Split Mould](#)



MultiPlex 50 Load Frame

Code: [25-3700/01](#)

Product Group: [Data Logging with the DSU](#), [CBR Load Frames](#), [Marshall Load Frames](#), [Triaxial Load Frames](#), [Data Logging with the DSU](#)

Compact bench mounting load frame designed for performing laboratory CBR, unconfined compression, Quick Undrained Triaxial and Marshall Stability Tests. Has a variable speed of 0.5 to 50.8mm per minute and features rapid approach of platen.

Standards

EN 12697-34, BS 598, BS 1377, BS 1924, ASTM D1883, EN 12697-23, EN 12697-24, EN 13286-47, AASHTO T193, ASTM D2850, ASTM D4767, AASHTO T296, AASHTO T297, ASTM D6927

Further Information

****NOT AVAILABLE FOR SALE IN THE USA****

Specification

Dimensions (l x w x h)	550 x 400 x 1470 mm
Max vertical clearance	800 mm
Horizontal clearance	265 mm
Platen diameter	133 mm
Platen travel	100 mm
Platen speed range	0.5 to 50.8 mm/min
Rapid approach speed	40 mm/min
Weight kg	100, (shipping 113 kg)

Accessories



50kN Clamped Boss Load Ring

Code: [78-0860](#)



50kN S-type Load Cell

Code: [27-1559](#)



Bracket and Adaptor. Dual Purpose Mounting Bracket for CBR Penetration Gauges EL24-9184/EL24-9186

Code: [24-9188](#)



Cbr Penetration Piston (Adjustable).

Code: [24-9183](#)



CBR Penetration Transducer 50mm Travel Fitted with 5 Pin Din Plug.

Code: [27-1705](#)



Clamped Boss Load Ring - 10.0 kN

Code: [78-0460](#)



Clamped Boss Load Ring - 2.0 kN

Code: [78-0060](#)



Clamped Boss Load Ring - 28.0 kN

Code: [78-0760](#)



Clamped Boss Load Ring - 3.0 kN

Code: [78-0160](#)



Clamped Boss Load Ring - 4.5 kN

Code: [78-0260](#)



Penetration Dial Gauge BS

Code: [24-9186](#)



Penetration Piston

Code: [24-9182](#)



Penetration/Swell Dial Gauge ASTM.

Code: [24-9184](#)

Alternatives



Cbr-Test 50 Machine 50kN Capacity BS and ASTM Supplied with Stabilising Bar.

Code: [24-9150/01](#)



Cbr-Test 50 Machine 50kN Capacity BS and ASTM Supplied with Stabilising Bar.

Code: [24-9150/06](#)



Digital Tritest 50 Load Frame

Code: [25-3518/01](#)



Unconfined Compression Platens. for Use on Ele Load Frames Max Sample Dia 95mm.

Code: [25-3650](#)

Product Group: [N/A](#)

Standards

ASTM D2166, AASHTO T208, BS 1377, BS 1924, EN 13286-47, ASTM D1883, AASHTO T193



Clamped Boss Load Ring - 4.5 kN

Code: 78-0260

Product Group: Clamped Boss Load Rings, Digital Tritest 50 Load Frame, Load Measurement, Load Measurement, Direct/Residual Shear Apparatus, Proving Rings, Load Measurement

Specification

Capacity: kN, kgf, lbf	4.5, 450, 1000
Typical Design sensitivity: N/div, kgf/div, lbf/div	3.0, 0.30, 0.66
Overall height mm	248
Approx weight kg	3.5
Capacity - lbf	1,000
Capacity - kN	4.5
Capacity - kgf	450
Typical Design Sensitivity - lbf/div	0.66
Typical Design Sensitivity - kN/div	3
Typical Design Sensitivity - Kg/div	0.3
Overall Height	9.76" (248 mm)
Approx Weight	7.7 lbs.(3.5 kg)

Accessories



50kN Clamped Boss Load Ring

Code: 78-0860



Clamped Boss Load Ring - 10.0 kN

Code: 78-0460



Clamped Boss Load Ring - 2.0 kN

Code: [78-0060](#)



Clamped Boss Load Ring - 28.0 kN

Code: [78-0760](#)



Clamped Boss Load Ring - 3.0 kN

Code: [78-0160](#)



Digital Proving Ring, 1,000 lbs (4.5 kN)

Code: [78-0264](#)

Spares/Consumables



Spare Dial Indicator for Load Rings

Code: [78-5461](#)

Alternatives



50kN Clamped Boss Load Ring

Code: [78-0860](#)



Clamped Boss Load Ring - 10.0 kN

Code: [78-0460](#)



Clamped Boss Load Ring - 2.0 kN

Code: [78-0060](#)



Clamped Boss Load Ring - 28.0 kN

Code: [78-0760](#)



Clamped Boss Load Ring - 3.0 kN

Code: [78-0160](#)



Digital Proving Ring, 1,000 lbs (4.5 kN)

Code: [78-0264](#)



50kN Clamped Boss Load Ring

Code: 78-0860

Product Group: Clamped Boss Load Rings, Digital Tritest 50 Load Frame, Load Measurement, Proving Rings, Accessories for the Marshall test, Accessories for the Marshall Test, CBR-Test 50 Machine, Load Measurement, CBR Loading Press, Hand-Operated, Force measurement

Calibrated in compression.

Standards

EN 12697-34

Specification

Capacity: kN, kgf, lbf	50.0, 5000, 11,200
Typical Design sensitivity: N/div, kgf/div, lbf/div	45.5, 4.54, 10.18
Overall height mm	248
Approx weight kg	7.9
Value of CBR	Above 40%
Capacity - kN	50
Capacity - kgf	5000
Capacity - lbf	11,200
Typical Design Sensitivity - kN/div	45.5
Typical Design Sensitivity - Kgf/div	4.54
Typical Design Sensitivity - lbf/div	10.18
Overall Height	9.76" (248 mm)
Approx Weight	17.4 lbs.(7.9 kg)

Accessories



Clamped Boss Load Ring - 10.0 kN

Code: 78-0460



Clamped Boss Load Ring - 2.0 kN

Code: [78-0060](#)



Clamped Boss Load Ring - 28.0 kN

Code: [78-0760](#)



Clamped Boss Load Ring - 3.0 kN

Code: [78-0160](#)



Clamped Boss Load Ring - 4.5 kN

Code: [78-0260](#)



Digital Proving Ring, 11,200 lbs (50.0 kN)

Code: [78-0864](#)

Spares/Consumables



Spare Dial Indicator for Load Rings

Code: [78-5461](#)

Alternatives



Clamped Boss Load Ring - 10.0 kN

Code: [78-0460](#)



Clamped Boss Load Ring - 2.0 kN

Code: [78-0060](#)



Clamped Boss Load Ring - 28.0 kN

Code: [78-0760](#)



Clamped Boss Load Ring - 3.0 kN

Code: [78-0160](#)



Clamped Boss Load Ring - 4.5 kN

Code: [78-0260](#)



Digital Proving Ring, 11,200 lbs (50.0 kN)

Code: [78-0864](#)



Clamped Boss Load Ring - 10.0 kN

Code: [78-0460](#)

Product Group: [Clamped Boss Load Rings](#), [Digital Tritest 50 Load Frame](#), [Proving Rings](#), [Force measurement](#)

Specification

Capacity: kN, kgf, lbf	10.0, 1000, 2250
Typical Design sensitivity: N/div, kgf/div, lbf/div	7.7, 0.77, 1.73
Overall height mm	248
Approx weight kg	4.6
Capacity	10 kN
Value of CBR	8% to 40%
Capacity - lbf	2,250
Capacity - kN	10
Capacity - kgf	1,000
Typical Design Sensitivity - lbf/div	1.73
Typical Design Sensitivity - kN/div	7.7
Typical Design Sensitivity - Kgf/div	0.77
Overall Height	9.76" (248 mm)
Approx Weight	10.1 lbs.(4.6 kg)

Accessories



50kN Clamped Boss Load Ring

Code: [78-0860](#)



Clamped Boss Load Ring - 2.0 kN

Code: [78-0060](#)



Clamped Boss Load Ring - 28.0 kN

Code: [78-0760](#)



Clamped Boss Load Ring - 3.0 kN

Code: [78-0160](#)



Clamped Boss Load Ring - 4.5 kN

Code: [78-0260](#)

Spares/Consumables



Spare Dial Indicator for Load Rings

Code: [78-5461](#)

Alternatives



50kN Clamped Boss Load Ring

Code: [78-0860](#)



Clamped Boss Load Ring - 2.0 kN

Code: [78-0060](#)



Clamped Boss Load Ring - 28.0 kN

Code: [78-0760](#)



Clamped Boss Load Ring - 3.0 kN

Code: [78-0160](#)



Clamped Boss Load Ring - 4.5 kN

Code: [78-0260](#)



Two Part Split Mould 50mm

Code: [25-5530](#)

Product Group: [Two-way Split Moulds](#), [Two-Part Split Mould](#)



Two-Way Split Former 50mm Diameter.

Code: [25-5500](#)

Product Group: [Two-way Split Formers](#), [Two-Way Split Formers](#)

50 mm Diameter Two-Way Split Former.



Vernier Caliper Range 0 to 200mm X 0.02mm.

Code: [81-0588](#)

Product Group: [Determination of the Shape Index, Linear Shrinkage, Miscellaneous Laboratory Hardware](#)

Vernier callipers 200 x 0.002mm. Graduated in mm and inches.

Standards

EN 933-4, BS 1377



Plate Bearing Apparatus Complete. 500kN Capacity

Code: 29-3800

Product Group: In-situ Testing, Plate Bearing Apparatus

Applications include the determination of bearing capacity of the soil in situ, designing for static loads on spread footings, and repetitive and non-repetitive plate loading tests of soils and flexible pavements.

Manufactured from machined steel plate with a finished thickness exceeding 25 mm. The plate has concentric markings on one face. All plates are supplied with two lifting eyes except for the 150 mm dia plate.

NOTE: to successfully perform the test, a reaction load is required.

IMPORTANT: The equipment is used in conjunction with a reaction beam. This is not supplied with the equipment.

Standards

BS 1377, EN 1997-3, ASTM D1194, ASTM D1195, ASTM D1196

Further Information

Comprising of:

- Hydraulic Jack 500 kN capacity
- Pressure system
- Datum bar
- 4x dial gauges 50 mm travel x 0.01 mm divisions
- 4x bearing plates: 150 mm, 305 mm, 455 mm and 760 mm diameter

Specification

Loading jack	500 kN capacity with integral ball seating
Pump	Hand operated, single speed with integral oil reservoir
Hose	3 m long. Maximum pressure 70 MPa with quick release couplings
Gauge	100 mm dia with quick release couplings and graphs to convert readings to kN, kgf and

Product Sheet

www.ele.com
+44 (0) 01525 249 200



Weights

lbf
Loading jack 24 kg.
Pressure system 12.5 kg



Rock Core Drill Supplied with 2 X Nx Core Drill Bit

Code: [70-0095/01](#)

Product Group: [Sample Preparation](#)

Cores may be cut from regular or irregular samples of rock or other material for end preparation prior to strength testing. Side guards and a drain tray provide protection against water spray and a sliding front allows access to the specimen clamp. The clamp provides maximum orientation for securing irregular block samples.

Further Information

Supplied complete with 2 x NX Core Barrel. For 220-240 V AC, 50 Hz, 1ph.

Specification

Dimensions (l x w x h)	500 x 500 x 1160 mm
Drill Head Travel	630 mm
Drill Speeds	350 and 900 rpm
Weight	80 kg



Gsp210/250 Core Trimmer & Cut Off Machine Supplied with Coolant Pump Unit

Code: [70-0250/01](#)

Product Group: [Sample Preparation](#)

This unit, designed for use in Rock Mechanics, can also be used in mineralogy, ceramics and refractory sample preparation. Cores in excess of 140 mm length and cubes up to 100 mm square can also be prepared.

Further Information

Supplied complete with coolant recirculation pump/tank unit and 1 each diamond set cutting disc and double faced cup wheel. For 220 - 240 V AC, 50 Hz, 1 ph.

Specification

Dimensions (l x w x h)	406 x 915 x 760 mm
Two vices supplied	1- Regular and Irregular samples up to 70 x 125 mm 1- V-vice cores up to 57 mm diameter x 140 mm long
Blade capacity	200 mm
Rated Power	750 W
Weight	118 kg



ELE-Hoek Cell Nx 54.74mm Diameter.

Code: [70-1710](#)

Product Group: [Hoek Cells](#)

- For use with pressures up to 70 MPa
- Fast and effective specimen handling
- Accessories for permeability testing

The ELE-Hoek cells in this section have been designed to accept the nominal NX core size as specified in International Standards.

The basic cell comprises a steel body and two steel end caps which are screwed to the body of the cell when in use. The body incorporates two self-sealing couplings; one for connecting to the hydraulic pressure system, the other for de-airing the cell chamber and for the attachment of pressure measurement devices if required. Hardened and ground spherical steel pistons and two jackets of the same diameter as the specimen are supplied.

Further Information

Supplied complete with 2 jackets and 1 pair of load spreader pads.

Accessories



Nylon Tubing 6mm Od 3500Kpa.

Code: [26-1926](#)



Specimen Extruder Bench Mounting Frame for Extruding Specimens From Hoek Cells

Code: [70-2725](#)



Standard Distance Piece - 20 mm Depth

Code: [37-4980](#)



Support Assembly

Code: [81-0094](#)

Spares/Consumables



Spare Jacket Nx Size.

Code: [70-1712](#)

Alternatives



ELE-Hoek Cell ADR Touch 2000 Compression Machine. 220 - 240 V 50/60H z

Code: [70-2630/01](#)



Hand Operated Pressure System. Complete with Pressure Gauge and Flexible Hose.

Code: [70-5000](#)



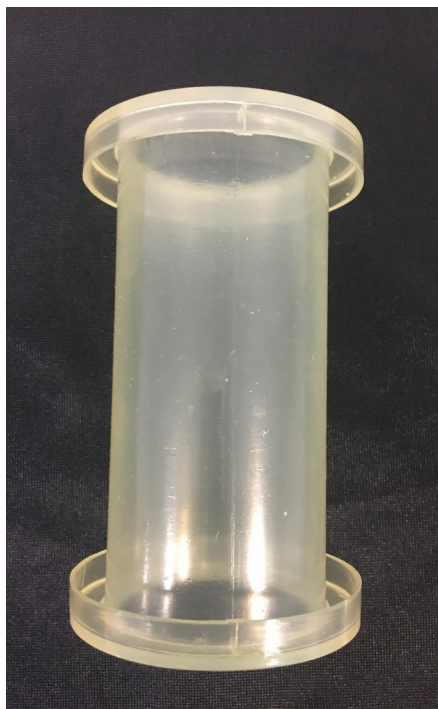
Pair of Permeability End Caps Nx. Supplied with Distance Block.

Code: [70-1750](#)



Pressure Test 3500 Oil/Water Constant Pressure System with Digital Pressure Gauge.

Code: [70-5130/01](#)



Spare Jacket Nx Size.

Code: [70-1712](#)

Product Group: [Hoek Cells](#)

(55 mm) jacket.



Specimen Extruder Bench Mounting Frame for Extruding Specimens From Hoek Cells

Code: 70-2725

Product Group: Hoek Cells

Extrudes the specimen from its jacket without the need to drain the confining fluid. Incorporates a rack and pinion mechanism mounted in a steel body, with adjustable back plate. Supplied with NX extruder adaptor set.



Hand Operated Pressure System. Complete with Pressure Gauge and Flexible Hose.

Code: [70-5000](#)

Product Group: [Hydraulic Constant Pressure Systems](#)

Specification

Pump	Single piston
Maximum pressure	70 mPa
Gauge	250 mm diameter scale marked 0-70 MN/m ²
Weight	14.8 kg

Accessories



Nylon Tubing 6mm Od 3500Kpa.

Code: [26-1926](#)



Specimen Extruder Bench Mounting Frame for Extruding Specimens From Hoek Cells

Code: [70-2725](#)



Standard Distance Piece - 20 mm Depth

Code: [37-4980](#)



Support Assembly

Code: [81-0094](#)

Spares/Consumables



Spare Jacket Nx Size.

Code: [70-1712](#)

Alternatives



ELE-Hoek Cell ADR Touch 2000 Compression Machine. 220 - 240 V 50/60H z

Code: [70-2630/01](#)



ELE-Hoek Cell Nx 54.74mm Diameter.

Code: [70-1710](#)



Pair of Permeability End Caps Nx. Supplied with Distance Block.

Code: [70-1750](#)



Pressure Test 3500 Oil/Water Constant Pressure System with Digital Pressure Gauge.

Code: [70-5130/01](#)



Pair of Permeability End Caps Nx. Supplied with Distance Block.

Code: [70-1750](#)

Product Group: [Permeability of Rock](#)

Permeability end caps used with ELE-Hoek Cells and constant pressure systems are a cost-effective solution suited to investigating the permeability of rock at high confining pressures in the laboratory.

To collect and measure the water which permeates through the rock specimen, a suitable burette such as 25-4540 is recommended. Each permeability end cap incorporates a tubing connector which accepts standard 6 mm tubing, 26-1926, used to connect the cell to the pressure system and burette.

Accessories



Nylon Tubing 6mm Od 3500Kpa.

Code: [26-1926](#)

Alternatives



ELE-Hoek Cell ADR Touch 2000 Compression Machine. 220 - 240 V 50/60H z

Code: [70-2630/01](#)



ELE-Hoek Cell Nx 54.74mm Diameter.

Code: [70-1710](#)



Hand Operated Pressure System. Complete with Pressure Gauge and Flexible Hose.

Code: [70-5000](#)



Pressure Test 3500 Oil/Water Constant Pressure System with Digital Pressure Gauge.

Code: [70-5130/01](#)



Pressure Test 3500 Oil/Water Constant Pressure System with Digital Pressure Gauge.

Code: [70-5130/01](#)

Product Group: [Permeability of Rock](#)

- Sealed oil reservoir
- Continuous constant pressure control

The ELE oil/water constant pressure system provides continuous variable pressure. The machine features a clear hydraulic/water interface reservoir, and digital pressure gauge range 0-3500 kPa.

Further Information

Complete with 2 litres of oil and digital pressure gauge. For 220 - 240 V AC, 50 - 60 Hz, 1 ph.

Specification

Dimensions (l x w x h)	240 x 400 x 500 mm
Maximum pressure	3500 kPa
Usable oil capacity	1 litre
Weight	12 kg

Accessories



Nylon Tubing 6mm Od 3500Kpa.

Code: [26-1926](#)



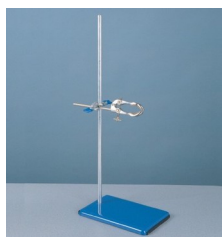
Specimen Extruder Bench Mounting Frame for Extruding Specimens From Hoek Cells

Code: [70-2725](#)



Standard Distance Piece - 20 mm Depth

Code: 37-4980



Support Assembly

Code: 81-0094

Spares/Consumables



Spare Jacket Nx Size.

Code: 70-1712

Alternatives



ELE-Hoek Cell ADR Touch 2000 Compression Machine. 220 - 240 V 50/60H z

Code: 70-2630/01



ELE-Hoek Cell Nx 54.74mm Diameter.

Code: 70-1710



Hand Operated Pressure System. Complete with Pressure Gauge and Flexible Hose.

Code: [70-5000](#)



Pair of Permeability End Caps Nx. Supplied with Distance Block.

Code: [70-1750](#)



Nylon Tubing 6mm Od 3500Kpa.

Code: [26-1926](#)

Product Group: [Permeability of Rock, Volume Change Measurement](#)

6 mm outside diameter x 4 mm inside diameter. For use up to a pressure of 3500 kPa. Priced per metre.



Advanced SilverSchmidt Concrete Test Hammer

Code: 35-1500

Product Group: Surface Hardness

The SilverSchmidt ST/PC is the first integrated concrete test hammer featuring true rebound value and unmatched repeatability.

Two factors contribute to the improved performance of this concrete test hammer over its predecessors:

- Velocity based detection of the rebound quotient
- The lightweight hybrid design of the impact plunger is made from aerospace alloy, matched to the elastic properties of the concrete and equipped with a hardness steel cap

Independent validation testing by BAM (Federal Institute for Materials Research and Testing, Germany) has shown the SilverSchmidt ST/PC to have less dispersion than the classical concrete test hammer over the entire range.

The unique design and high quality construction of the concrete test hammer SilverSchmidt ST/PC makes rebound hammer testing quicker and more accurate than ever before.

NOT AVAILABLE FOR SALE IN THE USA

Further Information

- The SilverSchmidt ST/PC concrete test hammer combines a high measurement accuracy with an unmatched repeatability.
- The rebound value requires no angular correction
- The concrete test hammer offers customer conversion curves for a wide range of compressive concrete strengths, including low f_c (<10 N/mm², 1'450 psi) and high strength concrete (up to 100 N/mm², 14'500 psi)
- A large number of measurement points can be easily collected by the concrete test hammer and automatically evaluated according to statistical data
- The concrete test hammer offers automatic conversion to the required measurement unit (MPa,

N/mm², kg/cm², psi)

Specification

Technical Data	Silver Schmidt
Impact Energy	2.207 Nm
Hammer Mass	135 g
Spring Constant	0.79 N/mm
Spring Extension	75 mm (2.95")
Dimensions	55 x 55 x 255 mm (2.16" x 2.16" x 9.84")
Concrete Compressive Strengths	10-100 N/mm ² (1450-14500 psi)
Weight	570 g (1.4 lb)



ELE-Hoek Cell ADR Touch 2000 Compression Machine. 220 - 240 V 50/60H Z

Code: [70-2630/01](#)

Product Group: [Triaxial Testing](#)

- High stability load frame
- Calibration accuracy satisfies BS EN ISO 7500-1, ASTM E4

This machine incorporates the ADR Touch Microprocessor System. The ADR is designed to minimise data entry during normal testing procedures. These machines are specially adapted for use with ELE Hoek Triaxial Cells and feature fixed upper and lower platens with locations to centralise the triaxial cell assembly for maximum stability.

Standards

BS EN ISO 7500-1, ASTM E4

Further Information

Supplied complete with digital readout, power pack, special upper and lower platens and gates. For 220 - 240 V AC, 50 - 60 Hz, 1 ph.

Specification

Dimensions (l x w x h)	520 x 700 x 1300 mm
Capacity	2000 kN
Ram travel	50 mm
Display	ADR Digital Readout
Platen diameter	178 mm
Accuracy	Better than $\pm 1\%$ over upper 90% of working range
Rated power	1350 W
Weight	600 kg

Accessories



Nylon Tubing 6mm Od 3500Kpa.

Code: [26-1926](#)



Specimen Extruder Bench Mounting Frame for Extruding Specimens From Hoek Cells

Code: 70-2725



Standard Distance Piece - 20 mm Depth

Code: 37-4980



Support Assembly

Code: 81-0094

Spares/Consumables



Spare Jacket Nx Size.

Code: 70-1712

Alternatives



ELE-Hoek Cell Nx 54.74mm Diameter.

Code: 70-1710



Hand Operated Pressure System. Complete with Pressure Gauge and Flexible Hose.

Code: [70-5000](#)



Pair of Permeability End Caps Nx. Supplied with Distance Block.

Code: [70-1750](#)



Pressure Test 3500 Oil/Water Constant Pressure System with Digital Pressure Gauge.

Code: [70-5130/01](#)



EN 12390-3/4 Distance Piece - 20 mm Depth

Code: [37-5110](#)

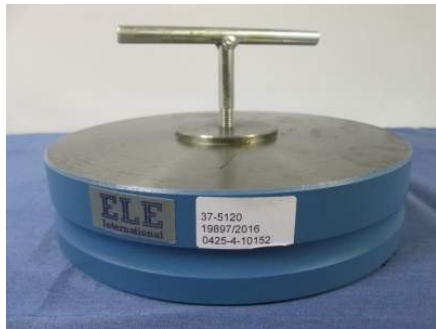
Product Group: [Distance Pieces](#)

Standards

EN 12390-3, BS 1881-115

Further Information

****Not available for sale in the USA****



EN 12390-3/4 Distance Piece - 50 mm Depth

Code: [37-5120](#)

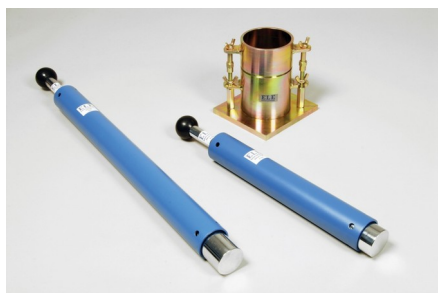
Product Group: [Distance Pieces](#)

Standards

EN 12390-3, BS 1881-115

Further Information

****Not available for sale in the USA****



Straight Edge 300mm.

Code: [24-9010](#)

Product Group: [BS/EN compaction test 4.5kg, Proctor compaction, Straightedge](#)

300 mm

Standards

BS 1377-4, BS 1924-2, ASTM D698, ASTM D1557, AASHTO T99, EN 13286-2, EN 13286-4, ASTM D1883, AASHTO T193, ASTM D558, ASTM D559, ASTM D560, AASHTO T134, AASHTO T135, AASHTO T136, AASHTO T180

Specification

Construction	Flat ground tool steel; beveled edge.
Dimensions	L x W x T (300mm x 40mm x 6mm).
Weight	550g

Accessories



ASTM Compaction Rammer 2.5Kg.

Code: [24-9063](#)

Alternatives



ASTM Compaction Rammer 2.5Kg.

Code: [24-9063](#)



Vernier Caliper (LCD) Range 0 to 200mm X 0.01mm

Code: [81-0590](#)

Product Group: [Determination of the Shape Index,](#)
[Miscellaneous Laboratory Hardware](#)

Dual measuring range highly accurate vernier caliper 0 to 200mm x 0.01mm (8 inch x 0.001 inch) to comply with bs 887 and bs 6365. Complete with liquid crystal display.

Standards

EN 933-4

Further Information

****NOT AVAILABLE FOR SALE IN THE USA****

Accessories



Vibrating Hammer

Code: [47-0455/01](#)

Alternatives



Vibrating Hammer

Code: [47-0455/01](#)



Digital Pocket Thermometer

Code: [82-5420](#)

Product Group: [Digital Pocket Thermometer](#)

The stainless steel probe carries a highly accurate platinum sensor and when not in use folds back into the side of the instrument. With a clear 8 mm high LCD display this instrument is powered by a standard 12 V MN21 battery or equivalent.

Further Information

****NOT AVAILABLE FOR SALE IN THE USA****

Specification

Dimensions (l x w x h)	150 x 45 x 19 mm
Range	-49.9 to 199.9°C
Resolution	0.1°C
Accuracy	±0.4°C
Weight	105 g



Digital Thermometer

Code: [82-5442](#)

Product Group: [Hand-held Digital Thermometers](#)

Range -75 - 1200°C

Further Information

****NOT AVAILABLE FOR SALE IN THE USA****

Specification

Range	-75 to +1200°C or -30 to +199.9°C or -75 to +1999°F
Resolution and accuracy	1°C (-75 to +1200°C), 0.2% ± 0.1°C, 0.1°C (-30 to +199.9°C) 0.2% ± 1.0°C, 1°F (-75 to +1999°F), 0.2% ± 2.0°F
Cold junction (automatic)	0 to 45°C
Weight	500 g



Hand-Held Thermo Hygrometer

Code: 506-150

Product Group: Humidity measurement

Remote of integral %rh & temperature probe.

Displays max/min humidity or temperature.

Optional backlit display.

The therma-hygrometer is an easy to use, relative humidity and air temperature measuring instrument.

The units measure %rh over the range of 0 to 100 %rh with a resolution of 0.1 %rh and temperature over the range of -20 to 70 °C with a resolution of 0.1 °C

It incorporates a custom LCD, displaying %rh, °C/°F, dew point indication, max/min and hold. There is an automatic display of both open circuit and low battery. The 506-150 display's the temperature and humidity at the push of a button separately.

The 506-150 is powered by three AAA batteries with a minimum life expectancy of 10,000 hours. An auto power off facility turns the therma-hygrometer off automatically after ten minutes, maximising battery life.

This hand-held battery operated instrument is operated by a single keypad button. It is suitable for a wide variety of applications where fast and accurate measurements of relative humidity and temperature are required. The probe is connected to the display unit via a one metre flexi-cable which enables its measurements to be taken in areas where access is limited.

Specification

Specification	Temperature	Humidity
Range	-20 to 70 °C	0 to 100 %rh
Resolution	0.1 °C/°F	0.1 %rh
Accuracy	±1 °C ±1 digit	± 2 % (10 to 90 %rh)

Product Sheet

www.ele.com
+44 (0) 01525 249 200



Hysteresis	n/a	$\pm 1\%$ rh
Sensor type	Silicone bandgap	Capacitance polymer
Battery	3 x 1.5-volt AAA	
Battery life	Minimum 5 years (10000 hours)	
Display	12 mm LCD	
Dimensions	25 x 56 x 128 mm	
Weight	130/160 grams	



Timer Clock

Code: [81-0518](#)

Product Group: [Rice Test Vibrator, Watches and Clocks](#)

Accessory

Standards

EN 12697-5

Further Information

****NOT AVAILABLE FOR SALE IN THE USA****

De-Aired Water Apparatus 15 Litre Capacity

Code: [25-1833/01](#)

Product Group: [De-Aired Water](#)



This compact self-contained unit will de-air water quickly and efficiently down to levels of dissolved oxygen acceptable for geotechnical test methods. Air is removed from the water by a vacuum system, which continuously circulates the water in the tank. The unit is supplied with a clear water container, which will hold a maximum of 15 litres of water. Input and output lines are formed using standard 6 mm tube connectors.

Standards

BS 1377-1

Specification

Dimensions l x w x h (mm) 380 x 356 x 470



Digital Tritest 50 Load Frame

Code: [25-3518/01](#)

Product Group: [Digital Tritest 50 Load Frame](#), [CBR Load Frames](#), [Triaxial Load Frames](#)

- Microprocessor control
- Large on-board LED screen display
- Direct entry via a touch sensitive keyboard
- Rapid approach and return to datum of platen
- Fully variable speed, 0.00001 to 9.99999 mm/min
- Samples up to 100 mm diameter

This 50 kN capacity machine, designed primarily for triaxial testing of soil specimens up to 100 mm diameter x 200 mm long, comprises a rigid twin column construction with an integral fully variable microprocessor controlled drive unit and LCD display with a touch sensitive keyboard. The machine is normally bench mounted for ease of installation and operation.

The use of a microprocessor controlled drive system and keyboard entry provides the Digital Tritest 50 with a wide variety of features which include pause and speed reset during test, RS 232C, operator programming of speed and control functions, self test diagnostics and many other features.

A robustly constructed steel case houses the motor drive system with careful attention being given to the prevention of ingress of water or grit. All operating controls are mounted on the front panel of the machine, which is angled and recessed to prevent physical and environmental damage.

Standards

BS 1377-7, BS 1377-8, BS 1924-2, ASTM D1883, ASTM D2166, ASTM D2850, ASTM D4767, ASTM D7181, AASHTO T99, AASHTO T134, AASHTO T135, AASHTO T136, AASHTO T180, AASHTO T193, AASHTO T208, AASHTO T296, AASHTO T297

Further Information

Complete with RS 232C interface.

Specification

Capacity	50kN (11,200 lbf).
Speed Range	English mode: 0.000001 to 0.399999 in/min. Metric mode: 0.00001 to 9.99999 mm/min.
Rapid Approach Speed	1.0 in/min. (25 mm/min.).

Product Sheet

www.ele.com
+44 (0) 01525 249 200



Platen Travel	100mm (3.9"); limit switch protection.
Platen Diameter	133 mm (5.2")
Vertical Clearance	910 mm, (36 .8") maximum; 305mm, (12") minimum.
Horizontal Clearance	364mm, (15 .3").
Serial Interface	RS232C; programmable baud rate and protocol.
Overall Dimensions	500 x 500 x 1,470 mm, (19.7" w. x 19.7" d. x 57.8" h).
Weight	Net 100kg (220 lbs); Shpg. 136kg (300 lbs).

Accessories



50kN Clamped Boss Load Ring

Code: [78-0860](#)



Adaptor kit, to perform CBR on the Tritest 50 load frame

Code: [25-3518/10](#)



Clamped Boss Load Ring - 10.0 kN

Code: [78-0460](#)



Clamped Boss Load Ring - 28.0 kN

Code: [78-0760](#)



Clamped Boss Load Ring - 3.0 kN

Code: [78-0160](#)



Clamped Boss Load Ring - 4.5 kN

Code: [78-0260](#)

Alternatives



MultiPlex 50 Load Frame

Code: [25-3700/01](#)



Versa-Loader

Code: [25-3525/02](#)



100mm Triaxial Cell 1700Kpa with 5 Pressure/ Drainage Ports. Supplied with Two Valves.

Code: 25-4157

Product Group: Triaxial Cell, Triaxial Cells

- Working pressure up to 1700 kPa
- All round visibility
- Sample sizes 38 to 100 mm diameter
- Rapid assembly and dismantling
- Accepts a range of interchangeable submersible load transducers

This range of precision made triaxial cells has been designed to meet the requirements of the modern soils laboratory. The cells have been treated to minimise corrosion. Particular attention has been paid to the quality of finish between the piston and the head. Final assembly includes the fitting of an O-ring seal and the use of special lubricant to reduce friction to a minimum and eliminate water leakage.

The piston load capacity is designed to accept high horizontal forces which may be present during the final stages of a test. Each cell has five take-off positions drilled in the base for top drainage/back pressure, pore water pressure and bottom drainage. Two no-volume change valves and an anvil for strain gauge/transducer datum are supplied for fitting to the cell.

A feature of these cells is that they all accept a single diameter piston. The internal height is such that a range of submersible load transducers can be fitted without any modification. Each cell will accept a range of base adaptors and various accessories for testing a wide range of specimens

Standards

BS 1377, ASTM D2850, ASTM D4767, AASHTO T296, AASHTO T297

Accessories



100 mm Base Adaptor for 100 mm Triaxial Cell.

Code: 25-4186



Pressure Interface Chamber

Code: [25-0695](#)

Alternatives



50mm Triaxial Cell 1700Kpa with 5 Pressure/ Drainage Ports. Supplied with Two Valves.

Code: [25-4047](#)



70mm Triaxial Cell 1700Kpa with 5 Pressure/ Drainage Ports. Supplied with Two Valves.

Code: [25-4117](#)