



IF IT'S WORTH BUILDING, IT'S WORTH TESTING

This wishlist was generated on 02/06/2017, and contains the following Products:

---

34-3590/01

**Tilting Drum Concrete Mixer 120/90L/ (4/3Cu.Ft) Complete with Stand**

---

34-0300/01

**Vibro Consistometer**

---

34-6250/01

**Vibrating Table 600 X 400mm Table Top. 220-240V 50Hz 1Ph. Supplied with clamping assembly**

---

34-2910

**Compacting Bar 25mm Sq X 380mm**

---

38-2010

**Vicat Frame**

---

38-2110

**EN Initial and Final Set Needle**

---

38-2200

**Vicat Mould**

---

34-4570

**150mm Cube Mould 4-Part Clamp Type. Cast Iron Construction. BS EN Compliant.**

---



## **Tilting Drum Concrete Mixer 120/90L/ (4/3Cu.Ft) Complete with Stand**

Code: [34-3590/01](#)

Product Group: [Tilting Drum Mixer](#)

120/90 litre mixing capacity. For 220 - 240 V AC, 50 Hz, 1 ph.

## **Standards**

EN 12390-2

## **Further Information**

**\*\*NOT AVAILABLE FOR SALE IN THE USA\*\***



## Vibro Consistometer

Code: [34-0300/01](#)

Product Group: [Vebe Time](#)

Comprising of vibrating table, container, slump cone, graduated rod and plate. For 220 - 240 V AC, 50 Hz, 1 ph.

## Further Information

**\*\*NOT AVAILABLE FOR SALE IN THE USA\*\***

## Accessories



### Aluminium Scoop Large

Code: [81-0220](#)



### Sample Tray - 1200 x 1160 x 50 mm

Code: [81-4230](#)



### Shovel - With flat blade

Code: [81-0240](#)



## Tamping Rod 16mm Dia X 600mm long hemispherical at both ends.

Code: [34-0130](#)



## Transparent Disc for Vibro Consistometer 34-0300

Code: [34-0300/10](#)

## Spares/Consumables



## Stopwatch

Code: [81-0521](#)



## Vibrating Table 600 X 400mm Table Top. 220-240V 50Hz 1Ph. Supplied with clamping assembly

Code: [34-6250/01](#)

Product Group: [Vibrating Table](#)

Vibrating table mounted on a steel stand, supplied with clamp assembly.

## Standards

EN 12390-2, EN 12350-6, EN 12350-7

## Further Information

**\*\*NOT AVAILABLE FOR SALE IN THE USA\*\***

3000 cycles per minute. For 220 - 240 V AC, 50 Hz, 1 ph.

## Specification

|                         |                         |
|-------------------------|-------------------------|
| Dimensions (table top)  | 600 x 400 mm            |
| Maximum no. Cube moulds | 2 x 150 mm <sup>2</sup> |
| Clamp Assembly          | Single                  |
| Weight                  | 60 kg                   |

## Accessories



### Compacting Bar 25mm Sq X 380mm

Code: [34-2910](#)





## Wire Brush

Code: [81-0705](#)

---

## Alternatives



## 100 X 100 X 500mm Beam Mould.

Code: [34-5003](#)



## 100mm Cube Mould 2-Part Clamp Type. Cast Iron Construction. BS EN Compliant.

Code: [34-4650](#)



## 100mm Cube Mould 4-Part Clamp Type. Cast Iron Construction. BS EN Compliant.

Code: [34-4520](#)



## 100mm Dia Cylinder Mould 200mm Long.

Code: [34-5210](#)



## 150 X 150 X 750mm Beam Mould.

Code: [34-5053](#)



## 150mm Cube Mould 2-Part Clamp Type. Cast Iron Construction. BS EN Compliant.

Code: [34-4670](#)



## 150mm Cube Mould 4-Part Clamp Type. Cast Iron Construction. BS EN Compliant.

Code: [34-4570](#)



## 150mm Dia Cylinder Mould 150mm Long.

Code: [34-5230](#)



## 150mm Dia Cylinder Mould 300mm Long.

Code: [34-5260](#)





**200mm Cube Mould Clamp Type. Cast Iron Construction.  
Stamped Mould Sections. EN Compliant.**

Code: [34-4620](#)



## Compacting Bar 25mm Sq X 380mm

Code: [34-2910](#)

Product Group: [Accessories for Concrete Moulds,](#)  
[Precision Air Entrainment Meter](#)

Steel, 380 x 25 mm (length x square) tamping area,  
EN/BS.

## Standards

EN 12390-1



## Vicat Frame

Code: [38-2010](#)

Product Group: [Vicat Method](#)

Complete with consistency plunger, 10 mm diameter.  
Requires one initial or final set needle to make up test weight to 300g.

## Standards

EN 196-3, EN 13454-2, ASTM C187, ASTM C191

## Further Information

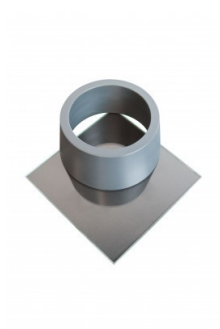
**\*\*NOT AVAILABLE FOR SALE IN THE USA\*\***

## Accessories

### ASTM Initial Set Needle

Code: [38-2620](#)





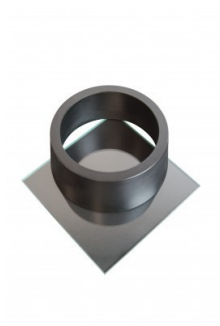
## ASTM Vicat Mould

Code: [38-2660](#)



## EN Initial and Final Set Needle

Code: [38-2110](#)



## EN Vicat Mould

Code: [38-2300](#)



## Engineer's Steel Rule

Code: [81-0805](#)



## Harvard Trip Balance

Code: [78-7090](#)



## Timer Clock

Code: [81-0518](#)



## Vicat Mould

Code: [38-2200](#)



## Weights for Harvard Trip Balance

Code: [78-7110](#)

## Spares/Consumables



## Consistency Plunger

Code: [38-2010/10](#)





## EN Initial and Final Set Needle

Code: [38-2110](#)

Product Group: [Vicat Method](#)

1.13mm diameter and 1.13mm diameter with special footing.

## Standards

ASTM C187, ASTM C191

## Further Information

**\*\*NOT AVAILABLE FOR SALE IN THE USA\*\***

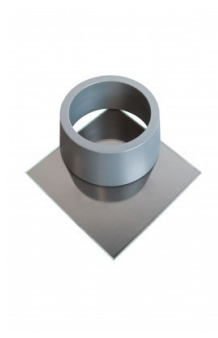
## Accessories

### ASTM Initial Set Needle

Code: [38-2620](#)

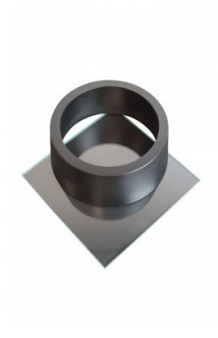






## ASTM Vicat Mould

Code: [38-2660](#)



## EN Vicat Mould

Code: [38-2300](#)



## Engineer's Steel Rule

Code: [81-0805](#)



## Harvard Trip Balance

Code: [78-7090](#)



## Vicat Mould

Code: 38-2200



## Weights for Harvard Trip Balance

Code: 78-7110

## Spares/Consumables



## Consistency Plunger

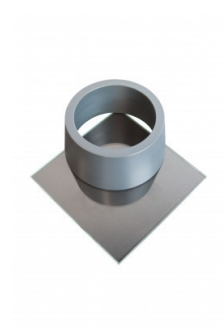
Code: 38-2010/10

## Alternatives



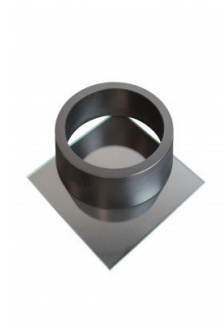
## ASTM Initial Set Needle

Code: 38-2620



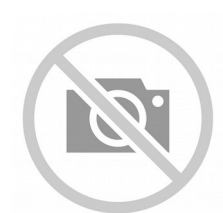
## ASTM Vicat Mould

Code: [38-2660](#)



## EN Vicat Mould

Code: [38-2300](#)



## Engineer's Steel Rule

Code: [81-0805](#)



## Harvard Trip Balance

Code: [78-7090](#)



## Vicat Mould

Code: [38-2200](#)



## Weights for Harvard Trip Balance

Code: [78-7110](#)



## Vicat Mould

Code: [38-2200](#)

Product Group: [Vicat Method, Automatic Vicat](#)

Accessory: manufactured from brass and supplied complete with a ring and glass base plate.

## Further Information

**\*\*NOT AVAILABLE FOR SALE IN THE USA\*\***

## Accessories

### ASTM Initial Set Needle

Code: [38-2620](#)



### ASTM Vicat Mould

Code: [38-2660](#)



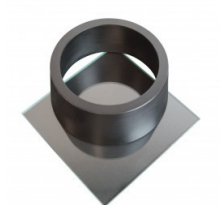
## EN Initial and Final Set Needle

Code: [38-2110](#)



## EN Vicat Mould

Code: [38-2300](#)



## Spares/Consumables

### Consistency Plunger

Code: [38-2010/10](#)

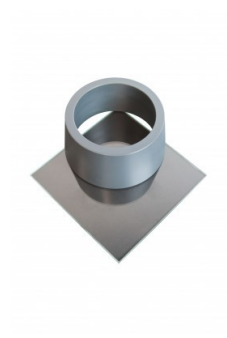


## Alternatives

### ASTM Initial Set Needle

Code: [38-2620](#)





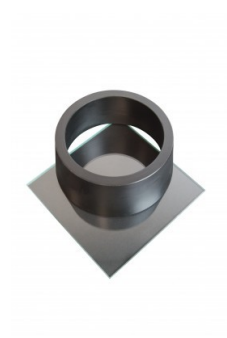
## ASTM Vicat Mould

Code: [38-2660](#)



## EN Initial and Final Set Needle

Code: [38-2110](#)



## EN Vicat Mould

Code: [38-2300](#)





## 150mm Cube Mould 4-Part Clamp Type. Cast Iron Construction. BS EN Compliant.

Code: [34-4570](#)

Product Group: [Cube Moulds](#), [Cube Moulds](#)

4-part with clamp attached base plate.

## Standards

BS 1881-108, EN 12390-1, EN 12390-2

## Specification

|              |                                     |
|--------------|-------------------------------------|
| Construction | Bolted sides and clamped base plate |
| Finish       | Painted                             |
| Weight       | 42 lb (19.1 kg)                     |

## Accessories



### Aluminium Scoop Large

Code: [81-0220](#)



### Compacting Bar 25mm Sq X 380mm

Code: [34-2910](#)



### Float - Plasterer's type

Code: [81-0340](#)



## Mould Oil (25 Litre Drum)

Code: [82-7341](#)



## Wire Brush

Code: [81-0705](#)

## Spares/Consumables



## Soft Headed Mallet.

Code: [29-5020](#)

## Alternatives



## Vibrating Table 600 X 400mm Table Top. 220-240V 50Hz 1Ph. Supplied with clamping assembly

Code: [34-6250/01](#)