



IF IT'S WORTH BUILDING, IT'S WORTH TESTING

This wishlist was generated on 13/06/2017, and contains the following Products:

25-0402

Consolidation Frame One Dimensional Consolidation Incremental Loading Device.

25-0408

Set of Weights 100Kg Total Weight.

25-0479

Consolidation Cell Complete 2.5 Inch Diameter Sample. Inc. Porous Discs and Cutting Ring.

25-0485

Calibration Disc 2.5 Inch Cell

27-1649

Consolidation Transducer Assembly 10mm Travel Fitted with 5 Pin Din Plug.

27-1773

DS7.2 One-Dimensional Consolidation Program for Windows 7, 32/64 bit

25-0479/13

2.5 Inch Dia Upper and Lower Porous Stones for Use on EL25-0479 Series Cell.

25-0482

Cutting Ring for 25-0479

25-1833/01

De-Aired Water Apparatus 15 Litre Capacity

25-3518/01

Digital Tritest 50 Load Frame

25-4047

50mm Triaxial Cell 1700Kpa with 5 Pressure/ Drainage Ports. Supplied with Two Valves.

25-4166

38mm/1.5 Inch Base Adaptor for 50mm Cells.

27-1617

Axial Strain Transducer Assembly 50mm Travel Fitted with 5 Pin Din Plug.

27-1633

Pressure Transducer Assembly 1700Kpa Fitted with 5 Pin DIN Plug.

27-1641

Volume Change Transducer Assembly 80ml Capacity Maximum Working Pressure 1700KPa

27-1753

DS7.2 Undrained Triaxial Shear Strength Program for Windows 7, 32/64 bit

27-1763

DS7.2 CU/CD Triaxial Shear Strength Program for Windows 7, 32/64 bit

26-1928

6mm Elbow Connector.

26-1930

6mm T Connector.

26-2114/01

Digital Direct/Residual Shear Apparatus Complete with Lever Loading Assembly. 220-240V 50/60Hz 1Ph.

26-2132

Set of Weights 50 kg Slotted.

26-2213

Shear Box Assembly 2.5 Inch Diameter

26-2217

Specimen Cutter 2.5 Inch Diameter.

26-2221

Specimen Extrusion Tool 2.5 Inch Diameter.

27-1300/01

DSU Electronic Readout and Control System 220 - 240 V AC 50/60 Hz

27-1561

S-Type Load Cell 5 kN.for Use with Direct/ Residual Shear Machine. Fitted with 5 Pin Din Plug.

27-1689

Vertical Displacement Transducer Assembly 15mm Travel with 5 Pin Din Plug Bracket for Shear Box

27-1697

Horizontal Displacement Transducer Assembly 15mm Travel 5 Pin Din Plug Mounting Pillar

27-1793

DS7.2 Direct and Residual Shear Strength Program for Windows 7, 32/64 bit

26-2213/10

Porous Plate 2.5 Inch Diameter

25-3650

Unconfined Compression Platens. for Use on Ele Load Frames Max Sample Dia 95mm.

78-5457/01

Electronic Balance - 8 000 g x 0.1 g



Consolidation Frame One Dimensional Consolidation Incremental Loading Device.

Code: 25-0402

Product Group: Consolidation Apparatus, Table Top Consolidation Apparatus

- High capacity - 8800 kPa on 50 mm diameter specimens using 11:1 beam ratio
- Triple beam ratio, 9:1, 10:1, 11:1
- Compact unit ensures maximum space saving

The ELE Oedometer is rigidly constructed to ensure minimum frame distortion. The frame is designed to load the specimen through a yoke assembly and one of three alternative beam ratios. The beam is fitted with a counterbalance weight and beam support jack. The cell platform will accept the complete range of ELE consolidation cells and is fitted with a central spigot to ensure accurate centring of the cell under the loading yoke. Dimensions without hanger 711 x 203 x 508 mm (l x w x h). Weight 22 kg.

Standards

ASTM D2435, ASTM D4546, AASHTO T216, ASTM D3877, BS 1377-5

Further Information

Supplied without dial gauge and weights.

Specification

Load Capacity	48 tons/sq. ft. (5,148 kPa) on 2.5" (63 mm) diam. samples.
Loading Beam	Cast aluminum; counterbalanced; 9:1, 10:1 and 11:1 ratios.
Frame	Cast aluminum; integral beam support jack; plated steel and platform.
Dimensions	203 x 711 x 508 mm, (8" w. x 28" d. x 20" h) . excluding weight hanger.
Weight	(Net 30 lbs). 13.6 kg; Shpg. 40 lbs. (18.1 kg).

Accessories



16 Ton Weight Set

Code: [25-0544](#)



2.416" Fixed Ring Consolidometer

Code: [25-0480](#)



2.5" Floating Ring Consolidometer

Code: [25-0530](#)



Consolidation Cell Complete 2.5 Inch Diameter Sample. Inc. Porous Discs and Cutting Ring.

Code: [25-0479](#)



Consolidation Cell Complete 50mm Diameter Sample.

Code: [25-0455](#)



Consolidation Cell/ Oedometer Complete 75mm Diameter Sample

Code: [25-0503](#)



Floor Mounting Stand.

Code: [25-0429](#)



Mechanical Dial Indicator - 0.4" Range

Code: [88-4070](#)



Mechanical Dial Indicator - 1.0" Range Counter Clockwise Movement

Code: [88-4120](#)



Mechanical Dial Indicator - 10 mm Range

Code: [88-4080](#)



Mechanical Dial Indicator - 25 mm Range Counter Clockwise Movement

Code: [88-4130](#)



Set of Weights 100Kg Total Weight.

Code: [25-0408](#)



Weight Set A

Code: [25-0535](#)



Weight Set B

Code: [25-0537](#)

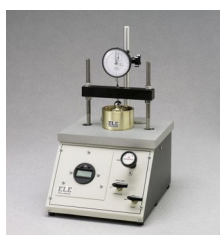
Spares/Consumables



Electronic Digital Indicator, 0.600"/15 mm range

Code: [88-4210](#)

Alternatives



Pneumatic Consolidation Apparatus

Code: [25-0560](#)



Set of Weights 100Kg Total Weight.

Code: [25-0408](#)

Product Group: [Consolidation Apparatus](#)

9 x 10 kg, 1 x 5 kg, 2 x 2 kg, 1 x 1 kg.

Standards

ASTM D2435, ASTM D4546, AASHTO T216, ASTM D3877, BS 1377-5



Consolidation Cell Complete 2.5 Inch Diameter Sample. Inc. Porous Discs and Cutting Ring.

Code: [25-0479](#)

Product Group: [Table Top Consolidation Apparatus](#), [ASTM/AASHTO consolidation cells and accessories](#), [Pneumatic Consolidation Apparatus](#), [Fixed Ring Consolidation](#)

Standards

ASTM D2435, ASTM D4546, AASHTO T216, ASTM D3877

Specification

Application	ASTM
Specimen Dia	2.5 inch
Specimen area	4.909 inch ²
Beam ratio	10:1
Load kg	1.55
Stress	1000 lbf/ft ²
Typical max stress	103 200 lbf/ft ²
Stress for 1 kg m ²	645 lbf/ft ²

Accessories



2.5" Floating Ring Consolidometer

Code: [25-0530](#)



Calibration Disc 2.5 Inch Cell

Code: [25-0485](#)



Consolidation Cell Complete 50mm Diameter Sample.

Code: [25-0455](#)



Consolidation Cell/ Oedometer Complete 75mm Diameter Sample

Code: [25-0503](#)

Spares/Consumables



2.5 Inch Dia Upper and Lower Porous Stones for Use on EL25-0479 Series Cell.

Code: [25-0479/13](#)



Cutting Ring for 25-0479

Code: [25-0482](#)

Alternatives



2.5" Floating Ring Consolidometer

Code: [25-0530](#)



Calibration Disc 2.5 Inch Cell

Code: [25-0485](#)



Consolidation Cell Complete 50mm Diameter Sample.

Code: [25-0455](#)



Consolidation Cell/ Oedometer Complete 75mm Diameter Sample

Code: [25-0503](#)



Calibration Disc 2.5 Inch Cell

Code: [25-0485](#)

Product Group: [ASTM/AASHTO consolidation cells and accessories, Fixed Ring Consolidation](#)

Standards

ASTM D2435, ASTM D4546, AASHTO T216, ASTM D3877

Accessories



Consolidation Cell Complete 2.5 Inch Diameter Sample. Inc. Porous Discs and Cutting Ring.

Code: [25-0479](#)

Alternatives



Consolidation Cell Complete 2.5 Inch Diameter Sample. Inc. Porous Discs and Cutting Ring.

Code: [25-0479](#)



Consolidation Transducer Assembly 10mm Travel Fitted with 5 Pin Din Plug.

Code: [27-1649](#)

Product Group: [Displacement Measurement](#),
[Displacement Transducers](#), [Vertical settlement measurement](#)

Fitted with 5 pin DIN plug.

Specification

Construction	Fully encapsulated electronics, sealed in a stainless steel case
Excitation	11 V DC
Connector	5-pin DIN type
Mounting bracket	Included as standard
Weight kg	0.45

Accessories



Axial Strain Transducer Assembly 50mm Travel Fitted with 5 Pin Din Plug.

Code: [27-1617](#)



Horizontal Displacement Transducer Assembly 15mm Travel 5 Pin Din Plug Mounting Pillar

Code: [27-1697](#)



Vertical Displacement Transducer Assembly 15mm Travel with 5 Pin Din Plug Bracket for Shear Box

Code: [27-1689](#)

Spares/Consumables



CBR Displacement Transducer

Code: [27-1706](#)

Alternatives



Transducer Extension Cable 3.0 m

Code: [27-1717](#)



Transducer Extension Cable 4.5 m

Code: [27-1719](#)



DS7.2 One-Dimensional Consolidation Program for Windows 7, 32/64 bit

Code: [27-1773](#)

Product Group: [DS7, DS7.2 One-Dimensional Consolidation Software](#)

DS7.1 Consolidation Software provides all basic functions needed to record and analyse consolidation test data. Options are available for monitoring settlement on a log time or square-root time basis. Printouts and graphical plots are available for all stages including M_v and C_v moisture content, voids ratio plots, and initial sample conditions.



2.5 Inch Dia Upper and Lower Porous Stones for Use on EL25-0479 Series Cell.

Code: [25-0479/13](#)

Product Group: [ASTM/AASHTO consolidation cells and accessories](#), [Fixed Ring Consolidation](#)

Standards

ASTM D2435, ASTM D4546, AASHTO T216, ASTM D3877

Accessories



Consolidation Cell Complete 2.5 Inch Diameter Sample. Inc. Porous Discs and Cutting Ring.

Code: [25-0479](#)



Cutting Ring for 25-0479

Code: [25-0482](#)

Product Group: [ASTM/AASHTO consolidation cells and accessories, Fixed Ring Consolidation](#)

Standards

ASTM D2435, ASTM D4546, AASHTO T216, ASTM D3877

Accessories



Consolidation Cell Complete 2.5 Inch Diameter Sample. Inc. Porous Discs and Cutting Ring.

Code: [25-0479](#)

De-Aired Water Apparatus 15 Litre Capacity

Code: [25-1833/01](#)

Product Group: [De-Aired Water](#)



This compact self-contained unit will de-air water quickly and efficiently down to levels of dissolved oxygen acceptable for geotechnical test methods. Air is removed from the water by a vacuum system, which continuously circulates the water in the tank. The unit is supplied with a clear water container, which will hold a maximum of 15 litres of water. Input and output lines are formed using standard 6 mm tube connectors.

Standards

BS 1377-1

Specification

Dimensions l x w x h (mm) 380 x 356 x 470



Digital Tritest 50 Load Frame

Code: [25-3518/01](#)

Product Group: [Digital Tritest 50 Load Frame](#), [CBR Load Frames](#), [Triaxial Load Frames](#)

- Microprocessor control
- Large on-board LED screen display
- Direct entry via a touch sensitive keyboard
- Rapid approach and return to datum of platen
- Fully variable speed, 0.00001 to 9.99999 mm/min
- Samples up to 100 mm diameter

This 50 kN capacity machine, designed primarily for triaxial testing of soil specimens up to 100 mm diameter x 200 mm long, comprises a rigid twin column construction with an integral fully variable microprocessor controlled drive unit and LCD display with a touch sensitive keyboard. The machine is normally bench mounted for ease of installation and operation.

The use of a microprocessor controlled drive system and keyboard entry provides the Digital Tritest 50 with a wide variety of features which include pause and speed reset during test, RS 232C, operator programming of speed and control functions, self test diagnostics and many other features.

A robustly constructed steel case houses the motor drive system with careful attention being given to the prevention of ingress of water or grit. All operating controls are mounted on the front panel of the machine, which is angled and recessed to prevent physical and environmental damage.

Standards

BS 1377-7, BS 1377-8, BS 1924-2, ASTM D1883, ASTM D2166, ASTM D2850, ASTM D4767, ASTM D7181, AASHTO T99, AASHTO T134, AASHTO T135, AASHTO T136, AASHTO T180, AASHTO T193, AASHTO T208, AASHTO T296, AASHTO T297

Further Information

Complete with RS 232C interface.

Specification

Capacity	50kN (11,200 lbf).
Speed Range	English mode: 0.000001 to 0.399999 in/min. Metric mode: 0.00001 to 9.99999 mm/min.
Rapid Approach Speed	1.0 in/min. (25 mm/min.).

Product Sheet

www.ele.com
+44 (0) 01525 249 200



Platen Travel	100mm (3.9"); limit switch protection.
Platen Diameter	133 mm (5.2")
Vertical Clearance	910 mm, (36 .8") maximum; 305mm, (12") minimum.
Horizontal Clearance	364mm, (15 .3").
Serial Interface	RS232C; programmable baud rate and protocol.
Overall Dimensions	500 x 500 x 1,470 mm, (19.7" w. x 19.7" d. x 57.8" h).
Weight	Net 100kg (220 lbs); Shpg. 136kg (300 lbs).

Accessories



50kN Clamped Boss Load Ring

Code: [78-0860](#)



Adaptor kit, to perform CBR on the Tritest 50 load frame

Code: [25-3518/10](#)



Clamped Boss Load Ring - 10.0 kN

Code: [78-0460](#)



Clamped Boss Load Ring - 28.0 kN

Code: [78-0760](#)



Clamped Boss Load Ring - 3.0 kN

Code: [78-0160](#)



Clamped Boss Load Ring - 4.5 kN

Code: [78-0260](#)

Alternatives



MultiPlex 50 Load Frame

Code: [25-3700/01](#)



Versa-Loader

Code: [25-3525/02](#)



50mm Triaxial Cell 1700Kpa with 5 Pressure/ Drainage Ports. Supplied with Two Valves.

Code: 25-4047

Product Group: [Triaxial Cell](#), [Triaxial Cells](#)

- Working pressure up to 1700 kPa
- All round visibility
- Sample sizes 38 to 100 mm diameter
- Rapid assembly and dismantling
- Accepts a range of interchangeable submersible load transducers

This range of precision made triaxial cells has been designed to meet the requirements of the modern soils laboratory. The cells have been treated to minimise corrosion. Particular attention has been paid to the quality of finish between the piston and the head. Final assembly includes the fitting of an O-ring seal and the use of special lubricant to reduce friction to a minimum and eliminate water leakage.

The piston load capacity is designed to accept high horizontal forces which may be present during the final stages of a test. Each cell has five take-off positions drilled in the base for top drainage/back pressure, pore water pressure and bottom drainage. Two no-volume change valves and an anvil for strain gauge/transducer datum are supplied for fitting to the cell.

A feature of these cells is that they all accept a single diameter piston. The internal height is such that a range of submersible load transducers can be fitted without any modification. Each cell will accept a range of base adaptors and various accessories for testing a wide range of specimens

Standards

BS 1377, ASTM D2850, ASTM D4767, AASHTO T296, AASHTO T297

Specification

Cell size	50 mm
Max specimen size	50 x 100 mm
Working pressure	1700 kPa
Max piston load	45 kN
Vertical clearance required	380 mm
Horizontal clearance required	155 mm
Weight kg	4

Accessories



38mm/1.5 Inch Base Adaptor for 50mm Cells.

Code: [25-4166](#)



50mm Base Adapter for 50mm Cells.

Code: [25-4168](#)



Pressure Interface Chamber

Code: [25-0695](#)

Alternatives



100mm Triaxial Cell 1700Kpa with 5 Pressure/ Drainage Ports. Supplied with Two Valves.

Code: [25-4157](#)



70mm Triaxial Cell 1700Kpa with 5 Pressure/ Drainage Ports. Supplied with Two Valves.

Code: [25-4117](#)



38mm/1.5 Inch Base Adaptor for 50mm Cells.

Code: [25-4166](#)

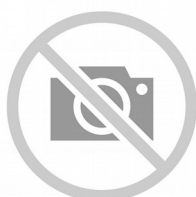
Product Group: [Specimen Base Adaptors, Base Pedestals](#)

38mm/1.5 Inch Base Adaptor with Twin Pore Pressure Ports for 50mm Cells.

Standards

BS 1377, ASTM D2850, ASTM D4767, AASHTO T296, AASHTO T297

Accessories



100 mm Base Adaptor for 100 mm Triaxial Cell.

Code: [25-4186](#)



50mm Base Adapter for 50mm Cells.

Code: [25-4168](#)



50mm Base Adaptors for 70mm Cells.

Code: [25-4174](#)



70mm Base Adaptor for 70mm Cells.

Code: [25-4176](#)

Alternatives



100 mm Base Adaptor for 100 mm Triaxial Cell.

Code: [25-4186](#)



50mm Base Adapter for 50mm Cells.

Code: [25-4168](#)



50mm Base Adaptors for 70mm Cells.

Code: [25-4174](#)



70mm Base Adaptor for 70mm Cells.

Code: [25-4176](#)



Axial Strain Transducer Assembly 50mm Travel Fitted with 5 Pin Din Plug.

Code: [27-1617](#)

Product Group: [Axial Displacement](#), [Axial Displacement](#), [Displacement Transducers](#)

0 to 50 mm range. For use with Triaxial Cells.

- Ideally suited for use with GDU for accurate displacement measurements
- Models available for use in consolidation, shear, CBR and triaxial test applications
- Supplied complete with mounting hardware for specified products

Displacement Transducers are used in consolidation, shear, CBR and triaxial test applications for accurate displacement measurements. They are supplied complete with a 5-pin DIN type connector for direct connection to the GDU.

Specification

Construction	Fully encapsulated electronics, sealed in a stainless steel case
Excitation	10V DC
Connector	5-pin DIN type
Mounting bracket	Included as standard
Weight kg	0.45

Accessories



Horizontal Displacement Transducer Assembly 15mm Travel 5 Pin Din Plug Mounting Pillar

Code: [27-1697](#)



Vertical Displacement Transducer Assembly 15mm Travel with 5 Pin Din Plug Bracket for Shear Box

Code: [27-1689](#)

Spares/Consumables



CBR Displacement Transducer

Code: [27-1706](#)

Alternatives



Horizontal Displacement Transducer Assembly 15mm Travel 5 Pin Din Plug Mounting Pillar

Code: [27-1697](#)



Vertical Displacement Transducer Assembly 15mm Travel with 5 Pin Din Plug Bracket for Shear Box

Code: [27-1689](#)



Pressure Transducer Assembly 1700Kpa Fitted with 5 Pin DIN Plug.

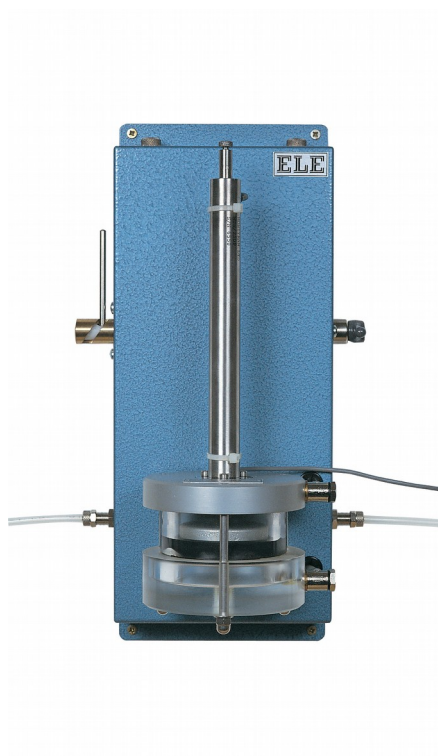
Code: 27-1633

Product Group: [Pressure Measurement](#), [Tri-Flex 2](#)
[One-Cell Permeability Test System](#), [Pressure](#)
[Transducer](#)

Pressure Transducers are used to measure the cell, pore and back pressures during triaxial testing. Assemblies are supplied complete with a de-airing block, valve, 5-pin DIN plug connector and calibration certificate

Specification

Construction	Stainless Steel
Excitation	10 V DC
Output	143 mV full range
Thread	1/4" BSP



Volume Change Transducer Assembly 80ml Capacity Maximum Working Pressure 1700KPa

Code: 27-1641

Product Group: [Volume Change Measurement](#),
[Tri-Flex 2 One-Cell Permeability Test System](#), [Volume Change Measurement](#), [Volume Change Transducer](#)

- Reversing valves to increase capacity
- Steel case for wall mounting and access to piping
- Supplied complete with calibration certificate

The Volume Change Transducer provides continuous measurements of volume change during the triaxial test. The assembly includes a valve to reverse the flow through the unit, providing increased capacity.

Specification

Maximum Pressure	250 psi (1,700 kPa).
Excitation	10V DC.
Output	1.25 Volts full range.
Capacity	80 cc x 0.1 cc sensitivity.
Case	Steel; hinged for access to piping.
Connector	5-Pin DIN type.
Overall Dimensions	9" w. x 7" d. x 14 -1/2" h. (229 x 178 x 368 mm).
Weight	Net 11 lbs. (5 kg).



DS7.2 Undrained Triaxial Shear Strength Program for Windows 7, 32/64 bit

Code: [27-1753](#)

Product Group: [DS7](#), [DS7.2 Quick Undrained Triaxial Software](#), [Automatic Data Acquisition - Triaxial](#)

- Options for single or multi-stage testing on a sample
- Mohr circles produced for graphical analysis

Options are available for a single test on one sample, standard three-sample procedure with linking of the results, or for a multi-stage test on one sample. Load and strain are monitored through transducers. Various printouts and graphical plots are available including basic sample data, moisture content and density. The program tabulates shearing data and plots stress against strain. Mohr circles are produced for graphical analyses.



DS7.2 CU/CD Triaxial Shear Strength Program for Windows 7, 32/64 bit

Code: [27-1763](#)

Product Group: [DS7, DS7.2 CU/CD Effective Stress Triaxial Software](#)

- Complete package for consolidated drained and consolidated undrained triaxial tests

This advanced package includes procedures for consolidated drained and consolidated undrained tests. Standard options are available for saturation, consolidation and shearing with automatic monitoring of the various parameters through transducers linked to the system. Load, strain, volume-change, pore-pressure, cell pressure and back pressure can all be monitored. Various prints and graphical plots are available to the engineer and include saturation data such as pore pressure build-up and B values, consolidation, volume change against time, shearing load versus strain with pore pressure monitoring.



6mm Elbow Connector.

Code: [26-1928](#)

Product Group: [Volume Change Measurement](#)



6mm T Connector.

Code: [26-1930](#)

Product Group: [Volume Change Measurement](#)



Digital Direct/Residual Shear Apparatus Complete with Lever Loading Assembly. 220-240V 50/60Hz 1Ph.

Code: 26-2114/01

Product Group: [Direct/Residual Shear Apparatus](#),
[Direct/Residual Shear Apparatus](#)

- Microprocessor control
- Large on-board LCD screen display
- Direct entry via touch sensitive keyboard
- Rapid approach and return to start datum
- Fully variable speed, 0.00001 to 9.99999 mm/minute
- Accepts specimens up to 100 mm square

The ELE Direct Shear Apparatus accepts specimens 60 mm, 100 mm square or 2.5 inches in diameter. The use of a microprocessor controlled drive system and keyboard entry gives the apparatus a wide range of features that include pause and speed reset during test, RS 232C interface, operator programming of speed and control functions, self test diagnostics and many other features. A return to start datum provides a positive means of reversing the shearbox when either preparing for a new test or continuing with residual testing procedures.

Safety forward/reverse travel limit switches are fitted as standard and monitored through the electronics system control.

The electronics are housed in a modern moulded shroud, which includes a large LCD display and keyboard entry. The apparatus is enclosed in a robustly constructed case, has been designed for floor mounting and is supplied complete with carriage, loading hanger and 10:1 lever loading device.

Standards

ASTM D3080, AASHTO T236, BS 1377, EN 1997-2

Further Information

for 220 - 240 V AC, 50 - 60 Hz, 1 ph.

Specification

Sample Size

Accepts either 2.42", 2.5" diam.; 60 mm square samples using accessory shear box assemblies, not included.

Speed Range

Variable in either English or Metric units

Shear Force
Vertical Load

Dimensions

Weight

between 0.000001"
(0.00001 mm) to 0.399999"
(9.99999
mm) per minute.
1,100 lbf. (5.0 kN) maximum.
2,200 lbf. (10.0 kN) using 10:1
lever ratio.
44.7" l. x 12 .6" w. x 49.6" h.
(1,135 x 320 x 1,260 mm).
Net 181 lbs. (82 kg).

Accessories



Clamped Boss Load Ring - 2.0 kN

Code: [78-0060](#)



Clamped Boss Load Ring - 3.0 kN

Code: [78-0160](#)



Clamped Boss Load Ring - 4.5 kN

Code: [78-0260](#)



Dial Gauge 10mm Travel X 0.002mm Divisions.

Code: [25-0440](#)



Digital Proving Ring, 1,000 lbs (4.5 kN)

Code: [78-0264](#)



Digital Proving Ring, 450 lbs (2.0 kN)

Code: [78-0064](#)



Horizontal Displacement Transducer Assembly 15mm Travel 5 Pin Din Plug Mounting Pillar

Code: [27-1697](#)



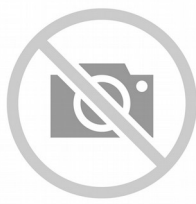
Mechanical Dial Indicator - 25 mm Range Clockwise Movement

Code: [88-4110](#)



S-Type Load Cell 5 kN.for Triaxial Tests. Fitted with 5 Pin Din Plug.

Code: [27-1551](#)



Set of Weights 50 kg Slotted.

Code: [26-2132](#)



Shear Box Assembly 100mm Sq.

Code: [26-2197](#)



Shear Box Assembly 2.5 Inch Diameter

Code: [26-2213](#)



Shear Box Assembly 60mm Sq.

Code: [26-2181](#)



Vertical Displacement Transducer Assembly 15mm Travel with 5 Pin Din Plug Bracket for Shear Box

Code: [27-1689](#)



Weight Set A

Code: 25-0535



Weight Set B

Code: 25-0537

Spares/Consumables



Dial Indicator - 1.0" Range

Code: 88-4100



Electronic Digital Indicator, 0.600"/15 mm range

Code: 88-4210



Vertical Dial Indicator, English

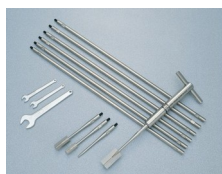
Code: 25-0445

Alternatives



Digital Direct/Residual Shear Apparatus Complete with Lever Loading Assembly. 110-120V 50/60Hz 1Ph.

Code: [26-2114/02](#)



H60 Field Inspection Vane Tester 0-200Kpa In Carrying Case. includes calibration and certificates.

Code: [26-3335](#)



Hand Vane Tester

Code: [26-3346](#)



Laboratory Vane Apparatus with 4 Springs and 12.7mm Vane; Hand Operated.

Code: [26-2270](#)



Pocket Shearmeter with 3 Vanes 0 to 1Kgf/Cm2 X 0.5Kgf/Cm2.

Code: [26-2261](#)



Set of Weights 50 kg Slotted.

Code: [26-2132](#)

Product Group: [Application of Normal Stress](#)

Normal stress is applied to the specimen through the lever loading device and the appropriate slotted weights

Accessories



Slotted Surcharge Weight 0.25 kg

Code: [26-2147](#)



Slotted Surcharge Weight 0.5 kg.

Code: [26-2145](#)



Slotted Surcharge Weight 1 kg.

Code: [26-2143](#)



Slotted Surcharge Weight 10 kg.

Code: [26-2137](#)



Slotted Surcharge Weight 2 kg.

Code: [26-2141](#)



Slotted Surcharge Weight 5 kg.

Code: [26-2139](#)

Alternatives



Slotted Surcharge Weight 0.25 kg

Code: [26-2147](#)



Slotted Surcharge Weight 0.5 kg.

Code: [26-2145](#)



Slotted Surcharge Weight 1 kg.

Code: [26-2143](#)



Slotted Surcharge Weight 10 kg.

Code: [26-2137](#)



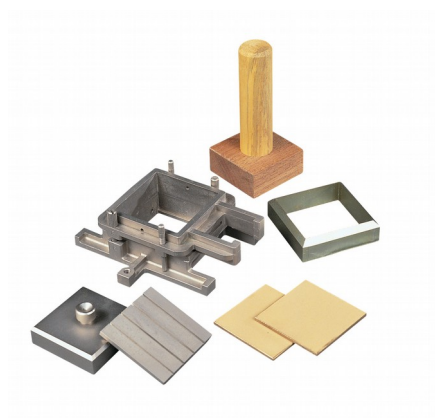
Slotted Surcharge Weight 2 kg.

Code: [26-2141](#)



Slotted Surcharge Weight 5 kg.

Code: [26-2139](#)



Shear Box Assembly 2.5 Inch Diameter

Code: 26-2213

Product Group: [Shear Box Assemblies](#), [Shear Box Assemblies](#)

- Manufactured from corrosion resistant materials
- Sample size 2.5 inch dia x 1 inch height meeting ASTM D3080
- Incorporates PTFE faced box separation screws to reduce friction
- Supplied complete with upper and lower porous plates and loading pad
- Suitable for quick undrained or drained/residual tests.

Standards

ASTM D3080, AASHTO T236

Further Information

All shearbox assemblies are designed to fit the carriage of 26-2114 series Digital Direct/Residual Shear Apparatus. They are supplied complete with three porous plates, one retaining plate and a loading pad. The three sizes supplied comply with the relevant requirements of BS 1377 and ASTM D3080. All assemblies can be used for quick shear tests or drained/residual shear tests.

Optional accessories are available including specimen cutters and extrusion tools.

Specification

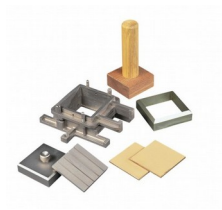
Specimen area	1.5 inch diameter
Specimen thickness	1 inch
Weight kg	2.8
Relevant standard	ASTM D3080

Spares/Consumables



Porous Plate 2.5 Inch Diameter

Code: 26-2213/10



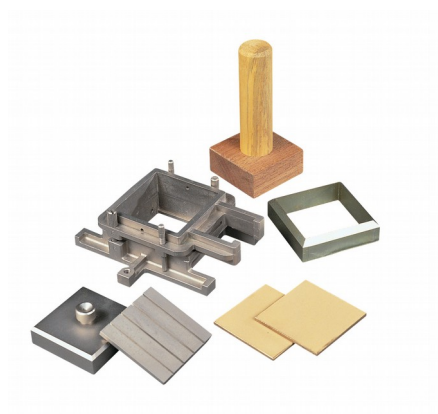
Specimen Cutter 2.5 Inch Diameter.

Code: 26-2217



Specimen Extrusion Tool 2.5 Inch Diameter.

Code: 26-2221



Specimen Cutter 2.5 Inch Diameter.

Code: [26-2217](#)

Product Group: [Shearbox Assemblies- Accessories and Spares](#)

Standards

ASTM D3080, AASHTO T236

Accessories



Shear Box Assembly 2.5 Inch Diameter

Code: [26-2213](#)

Spares/Consumables



Specimen Cutter 100mmsq.

Code: [26-2201](#)



Specimen Cutter 60mm Sq.

Code: [26-2185](#)

Alternatives



Specimen Cutter 100mmsq.

Code: 26-2201



Specimen Cutter 60mm Sq.

Code: 26-2185



Specimen Extrusion Tool 2.5 Inch Diameter.

Code: [26-2221](#)

Product Group: [Shearbox Assemblies- Accessories and Spares](#)

Standards

ASTM D3080, AASHTO T236

Accessories



Shear Box Assembly 2.5 Inch Diameter

Code: [26-2213](#)

Spares/Consumables



Specimen Extrusion Tool 60 mm sq.

Code: [26-2189](#)

Alternatives



Specimen Extrusion Tool 60 mm sq.

Code: [26-2189](#)



DSU Electronic Readout and Control System 220 - 240 V AC 50/60 Hz

Code: [27-1300/01](#)

Product Group: [Data Logging with the DSU](#), [Electronic Instrumentation](#), [Electronic Instrumentation](#), [Electronic Instrumentation](#), [Data Logging with the DSU](#)

· Download the full brochure here
[[/Page/catalogue-download/NTRmZS9UaGUgTkVXIERTVSBVU0EucGRm](#)]

- 4 channel automatic control and data-logging unit
- Automatic, dual-frame control
- Performs CBR, Marshall, Unconfined Compression, Direct and Residual Shear, One-Dimensional Consolidation and Unconsolidated Undrained tests
- LAN connection - software can be running anywhere on your server
- Never lose data from power fails - 2 gigabytes of non-volatile memory
- Extended warranty

The Data System Unit (DSU) is a versatile instrument designed to accommodate the general logging requirements of geotechnical and materials testing engineers. Its intelligent interface allows the user to work with a range of different sensors.

Further Information

The DSU has two distinct modes of operation. The first is referred to as DS mode (DataSystem) for operation with ELE International's established DS7 geotechnical testing software.

DS MODE

- Up to four one dimensional consolidation tests
- Up to two CBR tests
- One direct/residual shear test
- One triaxial quick un-drained test

DU MODE

- Up to two Marshall tests
- Up to two CBR tests
- Up to two Unconfined compression tests
- Automatic frame control

OVERVIEW

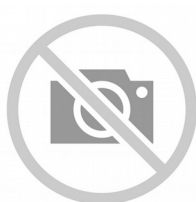
- Touch Screen data entry for standalone operation, Marshall/CBR/Quick un-drained

- Automatic single and dual frame control (with multiplex 50 frame)
- Log memory of 2 gigabytes
- Non-volatile memory
- Ethernet TCPIP link and serial comms support
- Market leading signal stability
- Certificate and manual calibration features

Become a member of the ELE International web site, add this new product to a wishlist to receive a quote! Click here [Login]

This product is now available in the USA and Canada!

Accessories



Cable, Safety/ID

Code: [27-1300/11](#)



Dual Frame Comms Cable

Code: [27-1300/10](#)



PC Cable

Code: [27-1300/12](#)

Alternatives



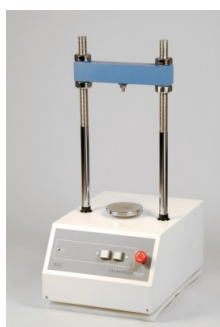
DSU Electronic Readout and Control System 110 V AC 60 Hz

Code: [27-1300/02](#)



Marshall Test 50

Code: 45-6810/06



Marshall Test 50

Code: 45-6810/01



S-Type Load Cell 5 kN.for Use with Direct/Residual Shear Machine. Fitted with 5 Pin Din Plug.

Code: [27-1561](#)

Product Group: [Load Measurement, Measurement of Load \(Shear Stress\)](#)

- Repeatability better than $\pm 0.02\%$ of rated output
- Non-Linearity better than $\pm 0.03\%$ of rated output
- Supplied complete with 5-pin DIN type connector for connection to GDU

Ideally suited for a wide range of applications, ELE S-type load cells provide high accuracy and minimum deformation. Various models are available, with the necessary adaptors, for use with ELE Triaxial Load Frames, Multiplex 50/Marshall Test 50/CBR Test 50 and Direct Shear machine.

Standards

BS 1377, ASTM D3080

Accessories



S-Type Load Cell 5 kN.for Triaxial Tests. Fitted with 5 Pin Din Plug.

Code: [27-1551](#)

Alternatives



S-Type Load Cell 5 kN.for Triaxial Tests. Fitted with 5 Pin Din Plug.

Code: [27-1551](#)



**Vertical Displacement Transducer
Assembly 15mm Travel with 5 Pin Din
Plug Bracket for Shear Box**

Code: [27-1689](#)
Product Group: [Displacement Measurement,](#)
[Measurement of Horizontal and Vertical Movement,](#)
[Displacement Transducers](#)

0 to 10 mm range. For use with Direct/Residual Shear Machines. •Ideally suited for use with GDU for accurate displacement measurements

- Models available for use in consolidation, shear, CBR and triaxial test applications
- Supplied complete with mounting hardware for specified products

Displacement Transducers are used in consolidation, shear, CBR and triaxial test applications for accurate displacement measurements. They are supplied complete with a 5-pin DIN type connector for direct connection to the GDU.

Specification

Construction	Fully encapsulated electronics, sealed in a stainless steel case
Excitation	12 V DC
Connector	5-pin DIN type
Mounting bracket	Included as standard
Weight kg	0.45
Construction	Fully encapsulated electronics, sealed in a stainless steel case.
Excitation	10vDC.
Connector	5-Pin DIN type.
Mounting Bracket	Included as standard.
Weight	Net 1 lb. (0.45 kg).

Accessories



Axial Strain Transducer Assembly 50mm Travel Fitted with 5 Pin Din Plug.

Code: [27-1617](#)



Horizontal Displacement Transducer Assembly 15mm Travel 5 Pin Din Plug Mounting Pillar

Code: [27-1697](#)

Spares/Consumables



CBR Displacement Transducer

Code: [27-1706](#)

Alternatives



Axial Strain Transducer Assembly 50mm Travel Fitted with 5 Pin Din Plug.

Code: [27-1617](#)



Horizontal Displacement Transducer Assembly 15mm Travel 5 Pin Din Plug Mounting Pillar

Code: [27-1697](#)



Horizontal Displacement Transducer Assembly 15mm Travel 5 Pin Din Plug Mounting Pillar

Code: [27-1697](#)

Product Group: [Displacement Measurement, Measurement of Horizontal and Vertical Movement, Displacement Transducers](#)

- Ideally suited for use with GDU for accurate displacement measurements
- Models available for use in consolidation, shear, CBR and triaxial test applications
- Supplied complete with mounting hardware for specified products

Displacement Transducers are used in consolidation, shear, CBR and triaxial test applications for accurate displacement measurements. They are supplied complete with a 5-pin DIN type connector for direct connection to the GDU.

Specification

Construction	Fully encapsulated electronics, sealed in a stainless steel case
Excitation	13 V DC
Connector	5-pin DIN type
Mounting bracket	Included as standard
Weight kg	0.45
Construction	Fully encapsulated electronics, sealed in a stainless steel case.
Excitation	10vDC.
Connector	5-Pin DIN type.
Mounting Bracket	Included as standard.
Weight	Net 1 lb. (0.45 kg).

Accessories



Axial Strain Transducer Assembly 50mm Travel Fitted with 5 Pin Din Plug.

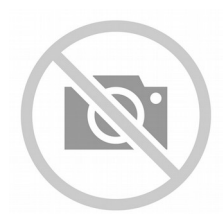
Code: [27-1617](#)



Vertical Displacement Transducer Assembly 15mm Travel with 5 Pin Din Plug Bracket for Shear Box

Code: [27-1689](#)

Spares/Consumables



CBR Displacement Transducer

Code: [27-1706](#)

Alternatives



Axial Strain Transducer Assembly 50mm Travel Fitted with 5 Pin Din Plug.

Code: [27-1617](#)



Vertical Displacement Transducer Assembly 15mm Travel with 5 Pin Din Plug Bracket for Shear Box

Code: [27-1689](#)

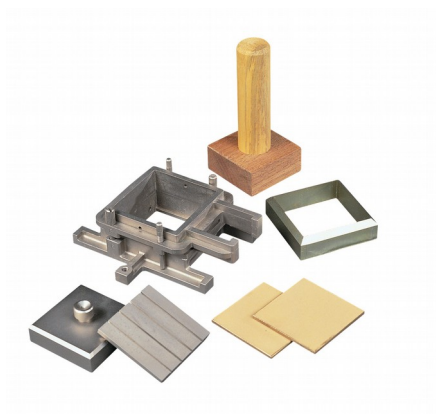


DS7.2 Direct and Residual Shear Strength Program for Windows 7, 32/64 bit

Code: [27-1793](#)

Product Group: [DS7](#), [DS7.2 Direct/Residual Shear Software](#), [Automatic Data Acquisition - Direct Shear](#)

This unique package provides test options for quick undrained or drained shear tests with the user selectable option of residual testing. Individual test results can be linked together to produce the Coulomb Envelope. Printouts and plots are available for sample description and basic test data such as moisture content, etc. Realtime plots of settlement, shear versus displacement and vertical displacement during shearing is readily available via the PC screen or printer.



Porous Plate 2.5 Inch Diameter

Code: [26-2213/10](#)

Product Group: [Shearbox Assemblies- Accessories and Spares](#)

Standards

ASTM D3080, AASHTO T236

Accessories



Shear Box Assembly 2.5 Inch Diameter

Code: [26-2213](#)

Spares/Consumables



2.42" Diameter Porous Stone

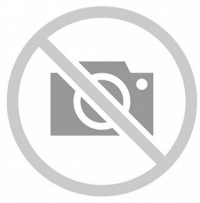
Code: [26-2223/10](#)



Porous Plate 60mm Sq.

Code: [26-2181/10](#)

Alternatives



2.42" Diameter Porous Stone

Code: [26-2223/10](#)



Porous Plate 60mm Sq.

Code: [26-2181/10](#)



Unconfined Compression Platens. for Use on Ele Load Frames Max Sample Dia 95mm.

Code: [25-3650](#)

Product Group: [N/A](#)

Standards

ASTM D2166, AASHTO T208, BS 1377, BS 1924, EN 13286-47, ASTM D1883, AASHTO T193



Electronic Balance - 8 000 g x 0.1 g

Code: [78-5457/01](#)

Product Group: [Electronic Balances](#)

Further Information

****Not available for sale in the USA****

Specification

Capacity resolution	8000 g x 0.1 g
Pan size	225 x 275 mm
Mains and battery	Yes
Dimensions (w x d x h)	315 x 355 x 110 mm
Weight	4 kg
Weighing units	g, kg, lb, lb:oz, oz
Repeatability	0.1 g