



IF IT'S WORTH BUILDING, IT'S WORTH TESTING

Contents

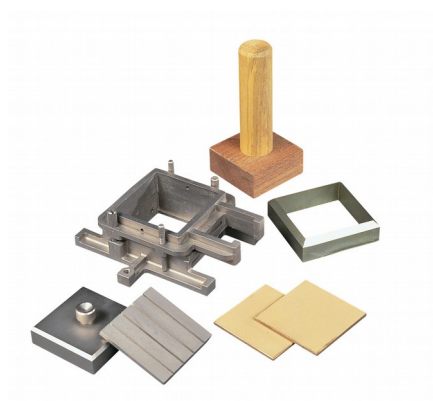
www.ele.com
+44 (0) 01525 249 200



This wishlist was generated on 20/06/2017, and contains the following Products:

26-2181

Shear Box Assembly 60mm Sq.



Shear Box Assembly 60mm Sq.

Code: [26-2181](#)

Product Group: [Shear Box Assemblies](#), [Shear Box Assemblies](#)

- Manufactured from corrosion resistant materials
- Sample size 60 x 60mm x 25mm high meeting BS 1377
- Incorporates PTFE faced box separation screws to reduce friction
- Supplied complete with upper and lower porous plates and loading pad
- Suitable for quick undrained or drained/residual tests

Standards

BS 1377, EN 1997-2, ASTM D3080, AASHTO T236

Further Information

All shearbox assemblies are designed to fit the carriage of 26-2114 series Digital Direct/Residual Shear Apparatus. They are supplied complete with three porous plates, one retaining plate and a loading pad. The three sizes supplied comply with the relevant requirements of BS 1377 and ASTM D3080. All assemblies can be used for quick shear tests or drained/residual shear tests.

Optional accessories are available including specimen cutters and extrusion tools.

Specification

Specimen area	60 x 60 mm
Specimen thickness	25 mm
Weight kg	2
Relevant standard	BS 1377

Accessories



Shear Box Assembly 100mm Sq.

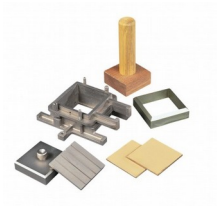
Code: [26-2197](#)

Spares/Consumables



Porous Plate 60mm Sq.

Code: [26-2181/10](#)



Specimen Cutter 60mm Sq.

Code: [26-2185](#)



Specimen Extrusion Tool 60 mm sq.

Code: [26-2189](#)

Alternatives



Shear Box Assembly 100mm Sq.

Code: [26-2197](#)