



IF IT'S WORTH BUILDING, IT'S WORTH TESTING

This wishlist was generated on 21/06/2017, and contains the following Products:

27-1649

Consolidation Transducer Assembly 10mm Travel Fitted with 5 Pin Din Plug.

27-1773

DS7.2 One-Dimensional Consolidation Program for Windows 7, 32/64 bit

25-0503/13

75mm Dia Upper and Lower Porous Stones for Use on EL25-0503 Series Cell.

25-0506

Cutting Ring 75mm Cell.

24-9150/01

Cbr-Test 50 Machine 50kN Capacity BS and ASTM Supplied with Stabilising Bar.

24-9182

Penetration Piston

24-9186

Penetration Dial Gauge BS

24-9188

Bracket and Adaptor. Dual Purpose Mounting Bracket for CBR Penetration Gauges EL24-9184/EL24-9186

24-9214

2Kg Annular Surcharge Weight

24-9216

2Kg Split Surcharge Weight.

78-0760

Clamped Boss Load Ring - 28.0 kN

24-9060

Proctor Mould

24-9095/01

Automatic Soils Compactor ASTM 220-240V 50Hz 1Ph.

35-1480

Standard Concrete Test Hammer

42-5310/01

**Los Angeles Abrasion Machine with CE Safety Cabinet W/ Microswitches.
220-240V 50Hz 1Ph.**

42-5300/10

Set of 12 Abrasive Charges (ASTM).

35-2302/09

Ultrasonic Concrete Tester 110-240V 50/60Hz 1Ph

34-3540/01

ELE Concrete Mixer 56/40 Litre Capacity.

37-6040

50 kN Mini-Flexural Machine

34-0192

**Slump Test Set BS & ASTM. C/W Slump Cone Base Plate Steel Rule Tamping
Rod & Funnel.**

34-4570

**150mm Cube Mould 4-Part Clamp Type. Cast Iron Construction. BS EN
Compliant.**

514-010

Quickdraw soil moisture probe 305 mm

81-0590

Vernier Caliper (LCD) Range 0 to 200mm X 0.01mm

78-0135/01

425 Litre Drying Oven

83-4170/01

Muffle Furnace

78-5447/01

Electronic Balance - 3600g x 0.01g

78-5527/01

Electronic Balance - 32 000 g x 1.0 g

42-1000/01

Buoyancy Balance 6Kg X 0.1G. Supplied with Support Frame Water Tank & Suspension Hook.

42-1005

Wire Basket Brass with Handle Nominal 6000Cm³ Capacity with 1.7mm Wire Mesh.

23-7150

Soil Colour Chart Set

24-0417/01

Motorised Liquid Limit Device W/ Counter BS 220-240V 50Hz 1Ph.

24-0425

Grooving Tool and Gauge B.S.

24-0430

Glass Plate.

24-1800

Shrinkage Mould to BS 1377

81-0588

Vernier Caliper Range 0 to 200mm X 0.02mm.

79-0050

200mm Dia BS Sieve 45 Mic Stainless Steel Mesh.

79-0060

200mm Dia BS Sieve 53 Mic Stainless Steel Mesh.

79-0070

200mm Dia BS Sieve 63 Mic Stainless Steel Mesh.

79-0080

200mm Dia BS Sieve 75 Mic Stainless Steel Mesh.

79-0085

200mm Dia Iso:565 3310/1 Sieve 80 Mic Stainless Steel Mesh.

79-0090

200mm Dia BS Sieve 90 Mic Stainless Steel Mesh.

79-0095

200mm Dia Iso:565 3310/1 Sieve 100 Mic Stainless Steel Mesh.

79-0100

200mm Dia BS Sieve 106Mic Stainless Steel Mesh.

79-0110

200mm Dia BS Sieve 125Mic Stainless Steel Mesh.

79-0120

200mm Dia BS Sieve 150 Mic Stainless Steel Mesh.

79-0125

200mm Dia Iso:565 3310/1 Sieve 160 Mic Stainless Steel Mesh.

79-0130

200mm Dia Iso:565 3310/1 Sieve 180 Mic Stainless Steel Mesh.

79-0135

200mm Dia Iso:565 3310/1 Sieve 200 Mic Stainless Steel Mesh.

79-0140

200mm Dia BS Sieve 212Mic Stainless Steel Mesh.



Consolidation Transducer Assembly 10mm Travel Fitted with 5 Pin Din Plug.

Code: [27-1649](#)

Product Group: [Displacement Measurement](#),
[Displacement Transducers](#), [Vertical settlement measurement](#)

Fitted with 5 pin DIN plug.

Specification

| | |
|------------------|---|
| Construction | Fully encapsulated electronics, sealed in a stainless steel case |
| Excitation | 11 V DC |
| Connector | 5-pin DIN type |
| Mounting bracket | Included as standard |
| Weight kg | 0.45 |

Accessories



Axial Strain Transducer Assembly 50mm Travel Fitted with 5 Pin Din Plug.

Code: [27-1617](#)



Horizontal Displacement Transducer Assembly 15mm Travel 5 Pin Din Plug Mounting Pillar

Code: [27-1697](#)



Vertical Displacement Transducer Assembly 15mm Travel with 5 Pin Din Plug Bracket for Shear Box

Code: [27-1689](#)

Spares/Consumables



CBR Displacement Transducer

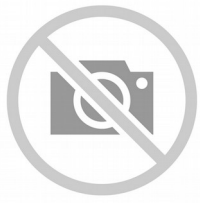
Code: [27-1706](#)

Alternatives



Transducer Extension Cable 3.0 m

Code: [27-1717](#)



Transducer Extension Cable 4.5 m

Code: [27-1719](#)



DS7.2 One-Dimensional Consolidation Program for Windows 7, 32/64 bit

Code: [27-1773](#)

Product Group: [DS7, DS7.2 One-Dimensional Consolidation Software](#)

DS7.1 Consolidation Software provides all basic functions needed to record and analyse consolidation test data. Options are available for monitoring settlement on a log time or square-root time basis. Printouts and graphical plots are available for all stages including M_v and C_v moisture content, voids ratio plots, and initial sample conditions.



75mm Dia Upper and Lower Porous Stones for Use on EL25-0503 Series Cell.

Code: [25-0503/13](#)

Product Group: [BS EN consolidation cells and accessories, Fixed Ring Consolidation](#)

Standards

BS 1377-5

Accessories



Consolidation Cell/ Oedometer Complete 75mm Diameter Sample

Code: [25-0503](#)



Cutting Ring 75mm Cell.

Code: [25-0506](#)

Product Group: [BS EN consolidation cells and accessories](#), [Fixed Ring Consolidation](#)

Standards

BS 1377-5

Accessories



Consolidation Cell/ Oedometer Complete 75mm Diameter Sample

Code: [25-0503](#)



Cbr-Test 50 Machine 50kN Capacity BS and ASTM Supplied with Stabilising Bar.

Code: [24-9150/01](#)

Product Group: [CBR Load Frames](#)

- Single speed machine (BS/EN and ASTM)
- Rapid platen adjustment
- Complete with stabilising bar
- Compact, bench-mounting design
- Options for mechanical or electronic measurement

Designed for performing laboratory CBR tests to BS 1377, EN13286-47 and ASTM D1883, this bench mounting machine comprises a twin column frame incorporating a motorised drive system. Rapid adjustment of the platen is provided, which enables daylight to be taken up quickly and also close control of application of a seating load.

Standards

BS 1377, BS 1924, EN 13286-47, ASTM D1883, AASHTO T193

Specification

| | |
|------------------------|---------------------|
| Dimensions (l x w x h) | 550 x 400 x 1220 mm |
| Max vertical clearance | 800 mm |
| Horizontal clearance | 255 mm |
| Platen diameter | 133 mm |
| Platen travel | 105 mm |
| Weight kg | 80 |

Accessories



50kN Clamped Boss Load Ring

Code: [78-0860](#)



50kN S-type Load Cell

Code: [27-1559](#)



ASTM Cbr Mould Complete with Collar & Perforated Base

Code: [24-9228](#)



BS Cbr Mould Body.

Code: [24-9198](#)



BS Extension Collar

Code: [24-9200](#)



BS Solid Base or Top Plate

Code: [24-9204](#)



Cbr Penetration Piston (Adjustable).

Code: [24-9183](#)



CBR Penetration Transducer 50mm Travel Fitted with 5 Pin Din Plug.

Code: [27-1705](#)



Clamped Boss Load Ring - 10.0 kN

Code: [78-0460](#)



Clamped Boss Load Ring - 2.0 kN

Code: [78-0060](#)



Clamped Boss Load Ring - 28.0 kN

Code: [78-0760](#)



Penetration Dial Gauge BS

Code: [24-9186](#)



Penetration Piston

Code: [24-9182](#)



Penetration/Swell Dial Gauge ASTM.

Code: [24-9184](#)

Alternatives



CBR-Test 50 Machine 50 kN Capacity BS and ASTM Supplied with Stabilising Bar.

Code: [24-9150/02](#)



Cbr-Test 50 Machine 50kN Capacity BS and ASTM Supplied with Stabilising Bar.

Code: [24-9150/01](#)



Cbr-Test 50 Machine 50kN Capacity BS and ASTM Supplied with Stabilising Bar.

Code: [24-9150/06](#)



MultiPlex 50 Load Frame

Code: [25-3700/01](#)



Penetration Piston

Code: [24-9182](#)

Product Group: [Penetration Measurement](#)

1.935 mm² (3 in²) area foot of case hardened steel.
Designed to fit all ELE load rings.



Penetration Dial Gauge BS

Code: [24-9186](#)

Product Group: [In-situ CBR](#), [Conversion of In-situ to Laboratory CBR](#), [Penetration Measurement](#)

Complete with rack extensions and chisel edge anvil. 25 mm travel x 0.01 mm divisions.

Standards

BS 1377, BS 1924



Bracket and Adaptor. Dual Purpose Mounting Bracket for CBR Penetration Gauges EL24-9184/EL24-9186

Code: [24-9188](#)

Product Group: [In-situ CBR](#), [Conversion of In-situ to Laboratory CBR](#), [Penetration Measurement](#)

Dual purpose mounting bracket for CBR penetration dial gauges. Allows gauge to be fixed to penetration piston or load ring.

Standards

BS 1377, BS 1924



2Kg Annular Surcharge Weight

Code: [24-9214](#)

Product Group: [BS EN CBR mould accessories](#)

Standards

EN 13286-4, BS 1377-4, BS 1924-2

Accessories



BS Solid Base or Top Plate

Code: [24-9204](#)

Alternatives



BS Solid Base or Top Plate

Code: [24-9204](#)



2Kg Split Surcharge Weight.

Code: [24-9216](#)

Product Group: [BS EN CBR mould accessories](#)

Standards

EN 13286-4, BS 1377-4, BS 1924-2



Clamped Boss Load Ring - 28.0 kN

Code: 78-0760

Product Group: Clamped Boss Load Rings, Digital Tritest 50 Load Frame, Load Measurement, Proving Rings, CBR-Test 50 Machine, Conversion of In-situ to Laboratory CBR, Load Measurement, CBR Loading Press, Hand-Operated, Force measurement

Standards

BS 1377, BS 1924

Specification

| | |
|---|----------------------|
| Capacity: kN, kgf, lbf | 28.0, 2800, 6000 |
| Typical Design sensitivity: N/div, kgf/div, lbf/div | 25.5, 2.54, 5.45 |
| Overall height mm | 248 |
| Approx weight kg | 5.4 |
| Capacity | 28 kN |
| Value of CBR | Average range of CBR |
| Capacity - lbf | 6,000 |
| Capacity - kN | 28 |
| Capacity - kgf | 2,800 |
| Typical Design Sensitivity - lbf/div | 5.45 |
| Typical Design Sensitivity - kN/div | 25.5 |
| Typical Design Sensitivity - Kgf/div | 2.54 |
| Overall Height | 9.76" (248 mm) |
| Approx Weight | 11 .9 lbs.(5.4 kg) |

Accessories



50kN Clamped Boss Load Ring

Code: 78-0860



Clamped Boss Load Ring - 10.0 kN

Code: [78-0460](#)



Clamped Boss Load Ring - 2.0 kN

Code: [78-0060](#)



Clamped Boss Load Ring - 3.0 kN

Code: [78-0160](#)



Clamped Boss Load Ring - 4.5 kN

Code: [78-0260](#)



Digital Proving Ring, 6,000 lbs (28.0 kN)

Code: [78-0764](#)

Spares/Consumables



Spare Dial Indicator for Load Rings

Code: [78-5461](#)

Alternatives



50kN Clamped Boss Load Ring

Code: [78-0860](#)



Clamped Boss Load Ring - 10.0 kN

Code: [78-0460](#)



Clamped Boss Load Ring - 2.0 kN

Code: [78-0060](#)



Clamped Boss Load Ring - 3.0 kN

Code: [78-0160](#)



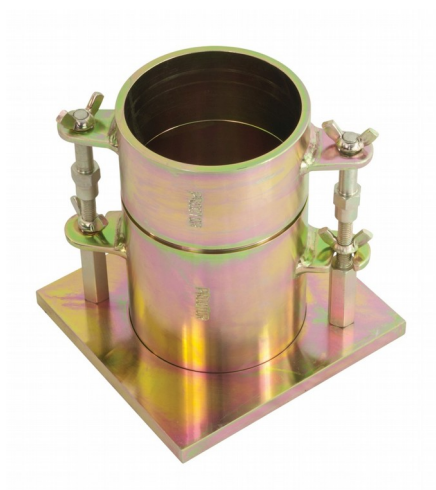
Clamped Boss Load Ring - 4.5 kN

Code: [78-0260](#)



Digital Proving Ring, 6,000 lbs (28.0 kN)

Code: [78-0764](#)



Proctor Mould

Code: 24-9060

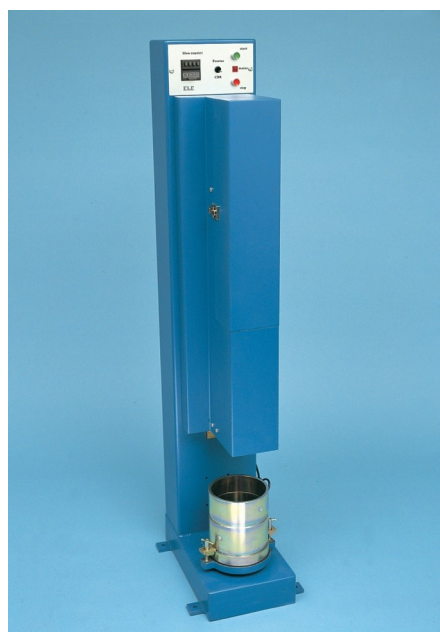
Product Group: Accessories for ASTM and Proctor compaction, Proctor compaction

Standards

ASTM D558, ASTM D559, ASTM D560, ASTM D698, ASTM D1557, AASHTO T99, AASHTO T134, AASHTO T135, AASHTO T136, AASHTO T180

Specification

| | |
|---------------------|---|
| Dimensions | 101.6 mm dia x 116.4 mm high |
| Rammer Mould Volume | 1/30 ft ³ |
| Construction | All steel, threaded studs with wing nuts, plated. |
| Weight | 5.4 kg |



Automatic Soils Compactor ASTM 220-240V 50Hz 1Ph.

Code: [24-9095/01](#)

Product Group: [Automatic Compactors](#), [Automatic Soil Compactor](#)

Standards

ASTM D558, ASTM D559, ASTM D560, ASTM D698, ASTM D1557, AASHTO T99, AASHTO T134, AASHTO T135, AASHTO T136, AASHTO T180, AASHTO T193

Specification

| | |
|------------|---|
| Hammer | Circular faced, 2.0" (50.8 mm) dia. foot; selectable to either 5.5 lb.(2.5 kg) or 10 lb. (4.5 kg) weight. |
| Drop | Adjustable to either 12 " (305 mm) or 18" (457 mm) |
| Controls | Digital counter system, selector switch for either standard proctor test or modified proctor/CBR testing. |
| Dimensions | 10" w. x 17" d. x 55 " h. (250 x 430 x 1,400 mm). |
| Weight | Net 41.9 lbs. (190 kg). |

Accessories



ASTM Compaction Mould 152mm.

Code: [24-9066](#)



Calibration Kit For Automatic Soil Compactor

Code: [24-9095/12](#)



Proctor Mould

Code: [24-9060](#)

Spares/Consumables



Lead Cylinders

Code: [24-9095/13](#)



Modified Compaction Mould

Code: [24-9098](#)



Standard Compaction Mould

Code: [24-9097](#)

Alternatives



Automatic Soil Compactor ASTM 110-120V 60Hz 1Ph

Code: [24-9095/02](#)



Automatic Soils Compactor ASTM 220-240V 60Hz 1Ph.

Code: [24-9095/06](#)



Standard Concrete Test Hammer

Code: [35-1480](#)

Product Group: [Concrete Test Hammer, Surface Hardness](#)

The hammer is intended for testing the quality of concrete in finished structures such as buildings and bridges. Supplied complete with carrying case and carborundum stone, the hammer is suitable for testing concrete with compressive strengths of 10 to 70 N/mm².

Standards

ASTM C805

Specification

| | |
|--------------------|---|
| Body | Includes indicator scale, calibration curves. |
| Calibration Curves | Rebound number vs. compressive strength. |
| Rubbing Stone | Prepares test surface. |
| Accuracy | Within 15 %. |
| Carrying Case | Plastic. |
| Weight | Net 3 lbs. (1.4 kg). |

Accessories



Testing Anvil

Code: [35-1530](#)

Spares/Consumables



Rubbing Stone

Code: [35-1475/10](#)

Alternatives



Concrete Test Hammer - English

Code: [35-1475](#)



Los Angeles Abrasion Machine with CE Safety Cabinet W/ Microswitches. 220-240V 50Hz 1Ph.

Code: [42-5310/01](#)

Product Group: [Los Angeles Abrasion Machine](#)

The machine consists of a closed hollow cylindrical steel drum rotating around its horizontal axis on ball bearing units mounted on a sturdy base framework. Also the full enclosure ensures noise is minimized.

The drum is driven at a speed of between 30 - 33 rpm via an enclosed belt drive arrangement from an electric motor/gearbox unit situated on the base frame. Inside the drum a full length steel shelf is attached, accessed by a dust-proof opening.

The cylinder incorporates a removable internal shelf, one shelf position is provided to meet the requirements of both the ASTM and EN test standards.

Controls are located easily on the right-hand side of the machine at convenient operator height.

Start and stop push buttons and a subtracting revolution counter allows the user to preset the number of revolutions before an automatic stop.

Standards

EN 1097-2, ASTM C131, ASTM C535, NF P18-573

Further Information

NOT AVAILABLE FOR SALE IN THE USA

Accessories

Set of 12 Abrasive Charges (ASTM).

Code: [42-5300/10](#)





Set of 12 Abrasive Charges EN)

Code: [42-5305/10](#)

Alternatives



Los Angeles Abrasion Machine Meets ASTM and European Standards. 220-240V 50Hz 1Ph.

Code: [42-5305/01](#)



Set of 12 Abrasive Charges (ASTM).

Code: [42-5300/10](#)

Product Group: [Los Angeles Abrasion Machine](#), [Los Angeles Abrasion Machine](#)

ASTM Set of 12.

Standards

EN 1097-2, ASTM C131, ASTM C535, AASHTO T96



Ultrasonic Concrete Tester 110-240V 50/60Hz 1Ph

Code: [35-2302/09](#)

Product Group: [Ultrasonic Detection](#), [Ultrasonic Concrete Test](#)

35-2302/09 is the most versatile Concrete Tester to date. It has all the functions of the classic Concrete Tester, but offers additional benefits.

Designed with laboratory use in mind, its compact size, rugged construction and optimized power consumption make it equally suitable for on-site use.

Along with the traditional transit time and pulse velocity measurement, 35-2302/09 offers path length measurement, perpendicular crack depth measurement and surface velocity measurement.

Optimized pulse shaping gives greater transmission range at lower voltage levels. This coupled with automated combination of the transmitter voltage and the receiver gain ensures an optimum received signal level, ensuring accurate and stable measurements.

The waveform can be viewed either via an external oscilloscope connection or directly on a connected PC screen.

Full remote control capability completes the package.

Complete with two 54 kHz transducers each with 3.6 metres of cable, coupling agent, carrying case and instruction manual.

Applications include pulse velocity determination, quality assessment and uniformity, modulus of elasticity measurement, curing status evaluation, crack depth estimation, assessment of fibre reinforced concrete.

Consists of display unit, 2 transducers (54 kHz), 2 BNC cables 1.5m, couplant, calibration rod, USB charger with USB-cable, 4x AA (LR6) batteries, data carrier with software, documentation and carrying case.

Standards

BS 1881-203, EN 12504-4, ASTM C597, D2845

Further Information

For 110 - 240 V AC, 50 - 60 Hz, 1 ph.

Specification

| | |
|------------------------------|--|
| Measuring range | Up to 15 m depending on concrete quality |
| Bandwidth | 20 to 500 kHz |
| Technology | Ultrasonic pulse velocity |
| Measuring resolution | 0.1 us |
| Pulse voltage UPV | 125 to 500 V |
| Receiver gain | 1x, 10x, 100x, auto |
| Pulse shape | Square wave |
| Nominal transducer frequency | 24-500 kHz |
| Number of channels | 1 |

Spares/Consumables



Ultrasound Couplant Supplied In 250ml bottle

Code: [35-2305](#)



ELE Concrete Mixer 56/40 Litre Capacity.

Code: [34-3540/01](#)

Product Group: [ELE Concrete Mixer](#)

- Portable and compact
- Tipping mechanism
- Adjustable blades
- Simple to clean and maintain

It is essential that the mixing of fresh concrete for laboratory test samples is thorough and consistent. The ELE Concrete Mixer is ideally suited for this purpose.

The mixer has been developed to give efficient mixing of both wet and dry materials. The mixing pan is removable and tilts for easy access to the pan and emptying on completion of the mixing operation. It is rotated by a turntable driven by a 1500 W, IP55 protected electric motor.

The mixer head lifts clear to provide maximum access to the pan and holds the mixing blades at a constant depth during the mixing operation. The blades are readily adjusted to suit the different types and volume of materials to be mixed.

Further Information

****NOT AVAILABLE FOR SALE IN THE USA****

220 - 240 V AC, 50 Hz, 1 ph.

Alternatives



ELE Concrete Mixer 56/40 Litre Capacity.

Code: [34-3540/06](#)



50 kN Mini-Flexural Machine

Code: [37-6040](#)

Product Group: [Hand-operated Flexural Machine](#)

- Hand operated
- Rugged, high strength frame
- Double-action hydraulic pump
- Dual calibrated (kN/lbf) gauge

This compact flexural machine is designed for testing 100 mm and 150 mm square section beams. The base incorporates a series of bearer locating points, enabling a wide range of tests to be performed.

The unit is self contained with hydraulic pressure applied through a double-action hand pump to a ram fitted in the top of the frame making this an ideal portable onsite quality control machine. A 200 mm diameter load gauge, dual calibrated to 50 kN x 0.1 kN and 11000 lbf x 50 lbf graduations is fitted as standard.

Standards

BS 1881-131

Further Information

****Not available for sale in the USA****



Slump Test Set BS & ASTM. C/W Slump Cone Base Plate Steel Rule Tamping Rod & Funnel.

Code: [34-0192](#)

Product Group: [Slump Test](#)

BS and ASTM comprising of slump cone, base plate, steel rule, tamping rod and funnel.

Further Information

****NOT AVAILABLE FOR SALE IN THE USA****

Accessories



Sample Tray - 1200 x 1160 x 50 mm

Code: [81-4230](#)



Shovel - With flat blade

Code: [81-0240](#)

Spares/Consumables



Stopwatch

Code: [81-0521](#)



150mm Cube Mould 4-Part Clamp Type. Cast Iron Construction. BS EN Compliant.

Code: [34-4570](#)

Product Group: [Cube Moulds](#), [Cube Moulds](#)

4-part with clamp attached base plate.

Standards

BS 1881-108, EN 12390-1, EN 12390-2

Specification

| | |
|--------------|-------------------------------------|
| Construction | Bolted sides and clamped base plate |
| Finish | Painted |
| Weight | 42 lb (19.1 kg) |

Accessories



Aluminium Scoop Large

Code: [81-0220](#)



Compacting Bar 25mm Sq X 380mm

Code: [34-2910](#)



Float - Plasterer's type

Code: [81-0340](#)



Mould Oil (25 Litre Drum)

Code: [82-7341](#)



Wire Brush

Code: [81-0705](#)

Spares/Consumables



Soft Headed Mallet.

Code: [29-5020](#)

Alternatives



Vibrating Table 600 X 400mm Table Top. 220-240V 50Hz 1Ph. Supplied with clamping assembly

Code: [34-6250/01](#)



Quickdraw soil moisture probe 305 mm

Code: [514-010](#)

Product Group: [Tensiometers](#)

The world's only portable, fast reading tensiometer.

Accurately measures soil water tension.

Supplied with coring tool and carrying case.

2 sizes available.

The Quickdraw soil moisture probe is an accurate, portable, inexpensive means for measuring the moisture available in the soil for plant uptake. The Quickdraw probe is ready for immediate use and requires no adjustment or calibration. No batteries are required and its ease of maintenance means that these tensiometers give years of continuous, trouble free service. Used extensively and accepted enthusiastically by farmers, growers, groundsmen and agronomists, world-wide.

The coring tool is first used to core an access hole to the desired depth of measurement. The tensiometer is then inserted into the access hole and the ceramic sensing tip is placed in contact with the soil. The Null knob can be used to reach equilibrium and provide a measurement more rapidly.

Spares/Consumables



Replacement Dial Gauge.

Code: [514-010/12](#)

Alternatives



Quickdraw soil moisture probe 460 mm

Code: [514-012](#)



Vernier Caliper (LCD) Range 0 to 200mm X 0.01mm

Code: [81-0590](#)

Product Group: [Determination of the Shape Index,](#)
[Miscellaneous Laboratory Hardware](#)

Dual measuring range highly accurate vernier caliper 0 to 200mm x 0.01mm (8 inch x 0.001 inch) to comply with bs 887 and bs 6365. Complete with liquid crystal display.

Standards

EN 933-4

Further Information

****NOT AVAILABLE FOR SALE IN THE USA****

Accessories



Vibrating Hammer

Code: [47-0455/01](#)

Alternatives



Vibrating Hammer

Code: [47-0455/01](#)



425 Litre Drying Oven

Code: [78-0135/01](#)

Product Group: [Oven Drying Method](#), [Oven Drying Method](#), [Oven Drying Method](#)

This oven is designed for drying large quantities of soils and aggregate samples and maintains the temperature in accordance with BS EN and ASTM requirements.

The oven is constructed of mild steel with a powder coated exterior and an aluminium coated steel chamber which is both durable and corrosion resistant.

The control system comprises of a microprocessor digital controller with overheat safety system. They also include main switch with indicator and heat and overheat indicators.

The temperature range is 40-180°C.

Standards

EN 12697-32, EN 13280-4, BS 598-104, BS 1377

Specification

| | |
|---------------------------------|---------------------|
| Capacity | 425 litres |
| External Dimensions (h x w x d) | 970 x 1410 x 810 mm |
| Internal Dimensions (h x w x d) | 760 x 920 x 640 mm |
| Fluctuation | ± 0.75°C |
| Rated power heater elements | 2000 W |
| Shelves supplied | 4 |
| Shelf positions | 5 |
| Weight | 120 kg |

Alternatives



100 Litre Drying Oven

Code: [78-1225/01](#)



150 Litre Drying Oven

Code: [78-1235/01](#)



225 Litre Drying Oven

Code: [78-1250/01](#)



50 Litre Drying Oven

Code: [78-1215/01](#)



Muffle Furnace

Code: [83-4170/01](#)

Product Group: [Furnaces](#), [Loss-on-Ignition](#),
[Loss-on-Ignition](#)

Standards

EN 196-2, EN 459-2, EN 13454-2, BS 1016-4, ISO 344, ISO 1171, ASTM D2361, ASTM D2795, ASTM D3714

Specification

| | |
|-------------------------------------|----------------------------------|
| External Dimensions (l x w x h) | 545 x 385 x 400 mm |
| Work chamber dimensions (l x w x h) | 300 x 200 x 120 mm |
| Internal volume | 6.9 litres |
| Maximum temperature | 1200 °C |
| Electrical supply | 220 – 240 V AC, 50 - 60 Hz, 1 ph |
| Power supply | 3500 W |
| Weight | 130 kg |

Spares/Consumables



Controller, for use in 83-4170/01

Code: [83-4170/11](#)



Element heating for use in 83-4170

Code: [83-4170/14](#)



Element/Chamber complete, heating, for use in 83-4170/01

Code: [83-4170/12](#)



Refractory brick for 83-4170/01

Code: [83-4170/13](#)



Thermostat, KGrade, 370 long, dia 2.5, for 83-4170/01

Code: [83-4170/10](#)

Alternatives



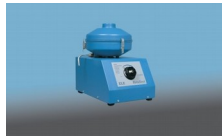
Heat of Hydration Apparatus

Code: [38-4600/01](#)



Heat of Hydration Apparatus

Code: [38-4600/06](#)



Rotatest 1500

Code: [45-3810/01](#)



Rotatest 3000

Code: [45-3815/01](#)



Electronic Balance - 3600g x 0.01g

Code: [78-5447/01](#)

Product Group: [Electronic Balances](#)

Further Information

****Not available for sale in the USA****

Specification

| | |
|------------------------|--|
| Capacity resolution | 3600 g x 0.01 g |
| Pan size | 160 x 160 mm |
| Mains and battery | No |
| Dimensions (l x w x h) | 260 x 170 x 90 mm |
| Weight | 6 kg |
| Weighing units | g, kg, ct, GN, N, lb, oz, lb:oz, ozt, dwt, T, custom unit |
| Readability | 0.1 g |



Electronic Balance - 32 000 g x 1.0 g

Code: [78-5527/01](#)

Product Group: [Electronic Balances](#)

Further Information

****Not available for sale in the USA****

Specification

| | |
|------------------------|--------------------------|
| Capacity resolution | 32000 g x 1.0 g |
| Pan size | 225 x 275 mm |
| Mains and battery | Yes |
| Dimensions (w x d x h) | 315 x 355 x 110 mm |
| Weight | 6 kg |
| Weighing units | g, kg, lb, lb:oz, oz |
| Repeatability | 1 g |
| Power supply | 230AC, 50/60Hz, 10 watts |



Buoyancy Balance 6Kg X 0.1G. Supplied with Support Frame Water Tank & Suspension Hook.

Code: [42-1000/01](#)

Product Group: [Particle Density \(specific gravity\) and Water Absorption for Coarse Aggregates](#)

The buoyancy balance system developed by ELE consists of a rigid support frame, incorporating a water tank mounted on a platform. A mechanical lifting device is used to raise the water tank through the frame height immersing the specimen suspended below the balance. The balance supplied may also be used as a standard weighing device, thus providing a versatile and comprehensive weighing system in the laboratory. 6000 g x 0.1 g supplied with frame, water tank and suspension hook.

Standards

EN 1097-6, EN 12697-6, BS 812, ASTM C127, AASHTO T85

Further Information

****NOT AVAILABLE FOR SALE IN THE USA****

For 220 - 240 V AC, 50 - 60 Hz, 1 ph.

Accessories



200 mm Diameter Lid

Code: [79-0010](#)



200 mm Diameter Receiver

Code: [79-0020](#)



200mm Dia BS Sieve 31.5mm Perforated Plate.

Code: [79-1630](#)



200mm Dia BS Sieve 4.00mm Stainless Steel Mesh.

Code: [79-0310](#)



200mm Dia BS Sieve 63 Mic Stainless Steel Mesh.

Code: [79-0070](#)



200mm Dia BS Sieve 63.0mm Perforated Plate.

Code: [79-1670](#)



Digital Pocket Thermometer

Code: [82-5420](#)



Sample Container - Tinned Steel 10 litres

Code: [81-3060](#)



Sample Tray - 406 x 406 x 50 mm

Code: [81-4030](#)



Wire Basket Brass with Handle Nominal 6000Cm³ Capacity with 1.7mm Wire Mesh.

Code: [42-1005](#)



Wire Basket Brass with Handle Nominal 6000Cm³ Capacity with 1.7mm Wire Mesh.

Code: 42-1005

Product Group: Particle Density (specific gravity) and
Water Absorption for Coarse Aggregates

For BS 812 Relative Density. 200 mm diameter x 190
mm deep, 1.70 mm wire mesh.

Standards

EN 1097-6, EN 12697-6, BS 812, ASTM C127, AASHTO T85

Further Information

NOT AVAILABLE FOR SALE IN THE USA



Soil Colour Chart Set

Code: [23-7150](#)

Product Group: [Soil Colour Charts](#), [Soil Color Charts](#)

The Munsell Soil Color Charts is an affordable way to evaluate the type of soil that is present within a given area. The book is set up to allow users to make soil color evaluations in the field quickly and easily. The soil classification system that has been developed around the Munsell color system is an established and accepted process to assign a soil type. This classification system has been used in the United States for more than 55 years to aid in the management and stewardship of natural resources. Through the use of the Munsell Soil Color Charts, practitioners from a wide range of professions can share reliable and consistent information about the color of soils at a particular site with colleagues anywhere around the world. The Munsell Soil Color Charts are used by a variety of industries and professions such as universities and high schools, forestry, forensics, environmental and soil science, building and contracting, landscaping, real estate, health departments, geology and archaeology.

Further Information

The following pages are included in the Munsell Soil Color Charts:

- Munsell 10R Soil Chart
- Munsell 10YR Soil Chart
- Munsell 2.5Y Soil Chart
- Munsell 2.5YR Soil Chart
- Munsell 5Y Soil Chart
- Munsell 5YR Soil Chart
- Munsell 7.5YR Soil
- 10Y - 5GY Colors - Olive greens Soil Chart
- Gley 1 & 2 (2 - Separate Charts) Soil Charts
- Munsell 5R Individual Soil Chart
- Munsell 7.5R Individual Soil Chart
- "New" White Page, 7.5R, 10YR, & 2.5Y

Specification

Munsell Book of Soil Color Charts

Durable binder contains 440 Munsell Color Standards

- Featuring ISCC-NBS color names
- Munsell alpha-numeric notation

Color produced on water resistant substrate

Features Munsell notations for each color providing:

- Value (degree of lightness)
- Hue (color)
- Chroma (degree of saturation)

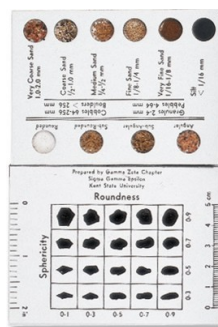
Used with medium, fine-grained, and coarse-grained rocks

Pages are cleanable and can be exposed to standard environmental conditions in the field

Dimensions

- Binder Size 150 mm x 196 mm x 25 mm
- Page Size 111 mm x 184 mm
- Weight 0.9 kg

Alternatives



Sand Grading Chart

Code: [23-7130](#)



Motorised Liquid Limit Device W/ Counter BS 220-240V 50Hz 1Ph.

Code: [24-0417/01](#)

Product Group: [Casagrande Method](#)

Complete with revolution counter and motor.

Standards

BS 1377-2

Accessories



Glass Plate.

Code: [24-0430](#)



Grooving Tool and Gauge B.S.

Code: [24-0425](#)

Alternatives



Liquid Limit Device BS with Counter. C/W Metal Grooving Tool & Test Gauge.

Code: [24-0410](#)



Grooving Tool and Gauge B.S.

Code: [24-0425](#)

Product Group: [Casagrande Method](#)

Constructed to British Standards.

Standards

BS 1377-2



Glass Plate.

Code: [24-0430](#)

Product Group: [Casagrande Method, Determination of Plastic Limit](#)

500 mm square x 10 mm thick.

Standards

BS 1377-2



Shrinkage Mould to BS 1377

Code: [24-1800](#)

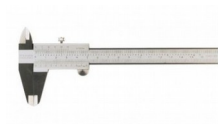
Product Group: [Linear Shrinkage](#)

To produce a specimen 140 mm long x 12.5 mm radius.

Standards

BS 1377

Accessories



Vernier Caliper Range 0 to 200mm X 0.02mm.

Code: [81-0588](#)



Vernier Caliper Range 0 to 200mm X 0.02mm.

Code: [81-0588](#)

Product Group: [Determination of the Shape Index, Linear Shrinkage, Miscellaneous Laboratory Hardware](#)

Vernier callipers 200 x 0.002mm. Graduated in mm and inches.

Gives four types of readings: inside, outside, depth and step. Dual reading scale (metric and inch) with 14° bevelled vernier scale for reduced parallax reading error and knurled locking nut. Manufactured from hardened stainless steel for rigidity. Satin finish.

Conforms to DIN 862.

Standards

EN 933-4, BS 1377



200mm Dia BS Sieve 45 Mic Stainless Steel Mesh.

Code: [79-0050](#)

Product Group: [200mm Diameter BS Sieves](#), [200mm Diameter BS Sieves](#), [200mm Diameter BS Sieves](#)

Standards

BS 410-1, ISO 3310, ISO 565, EN933-2

Further Information

****NOT AVAILABLE FOR SALE IN THE USA****



200mm Dia BS Sieve 53 Mic Stainless Steel Mesh.

Code: 79-0060

Product Group: 200mm Diameter BS Sieves, 200mm Diameter BS Sieves, 200mm Diameter BS Sieves

Standards

BS 410-1, ISO 3310, ISO 565, EN933-2

Further Information

NOT AVAILABLE FOR SALE IN THE USA



200mm Dia BS Sieve 63 Mic Stainless Steel Mesh.

Code: [79-0070](#)

Product Group: [200mm Diameter BS Sieves](#), [200mm Diameter BS Sieves](#), [200mm Diameter BS Sieves](#)

Standards

BS 410-1, ISO 3310, ISO 565, EN933-2

Further Information

****NOT AVAILABLE FOR SALE IN THE USA****



200mm Dia BS Sieve 75 Mic Stainless Steel Mesh.

Code: [79-0080](#)

Product Group: [200mm Diameter BS Sieves](#), [200mm Diameter BS Sieves](#), [200mm Diameter BS Sieves](#)

Standards

BS 410-1, ISO 3310, ISO 565, EN933-2

Further Information

****NOT AVAILABLE FOR SALE IN THE USA****



200mm Dia Iso:565 3310/1 Sieve 80 Mic Stainless Steel Mesh.

Code: 79-0085

Product Group: 200mm Diameter BS Sieves, 200mm Diameter BS Sieves, 200mm Diameter BS Sieves

Standards

BS 410-1, ISO 3310, ISO 565, EN933-2

Further Information

****NOT AVAILABLE FOR SALE IN THE USA****



200mm Dia BS Sieve 90 Mic Stainless Steel Mesh.

Code: [79-0090](#)

Product Group: [200mm Diameter BS Sieves](#), [200mm Diameter BS Sieves](#), [200mm Diameter BS Sieves](#)

Standards

BS 410-1, ISO 3310, ISO 565, EN933-2

Further Information

****NOT AVAILABLE FOR SALE IN THE USA****



200mm Dia Iso:565 3310/1 Sieve 100 Mic Stainless Steel Mesh.

Code: 79-0095

Product Group: 200mm Diameter BS Sieves, 200mm Diameter BS Sieves, 200mm Diameter BS Sieves

Standards

BS 410-1, ISO 3310, ISO 565, EN933-2

Further Information

NOT AVAILABLE FOR SALE IN THE USA



200mm Dia BS Sieve 106Mic Stainless Steel Mesh.

Code: 79-0100

Product Group: 200mm Diameter BS Sieves, 200mm Diameter BS Sieves, 200mm Diameter BS Sieves

Standards

BS 410-1, ISO 3310, ISO 565, EN933-2

Further Information

NOT AVAILABLE FOR SALE IN THE USA



200mm Dia BS Sieve 125Mic Stainless Steel Mesh.

Code: [79-0110](#)

Product Group: [200mm Diameter BS Sieves](#), [200mm Diameter BS Sieves](#), [200mm Diameter BS Sieves](#)

Standards

BS 410-1, ISO 3310, ISO 565, EN933-2

Further Information

****NOT AVAILABLE FOR SALE IN THE USA****



200mm Dia BS Sieve 150 Mic Stainless Steel Mesh.

Code: [79-0120](#)

Product Group: [200mm Diameter BS Sieves](#), [200mm Diameter BS Sieves](#), [200mm Diameter BS Sieves](#)

Standards

BS 410-1, ISO 3310, ISO 565, EN933-2

Further Information

****NOT AVAILABLE FOR SALE IN THE USA****



200mm Dia Iso:565 3310/1 Sieve 160 Mic Stainless Steel Mesh.

Code: [79-0125](#)

Product Group: [200mm Diameter BS Sieves](#), [200mm Diameter BS Sieves](#), [200mm Diameter BS Sieves](#)

Standards

BS 410-1, ISO 3310, ISO 565, EN933-2

Further Information

****NOT AVAILABLE FOR SALE IN THE USA****



200mm Dia Iso:565 3310/1 Sieve 180 Mic Stainless Steel Mesh.

Code: 79-0130

Product Group: 200mm Diameter BS Sieves, 200mm Diameter BS Sieves, 200mm Diameter BS Sieves

Standards

BS410-1, EN933-2, ISO 565

Further Information

NOT AVAILABLE FOR SALE IN THE USA



200mm Dia Iso:565 3310/1 Sieve 200 Mic Stainless Steel Mesh.

Code: 79-0135

Product Group: 200mm Diameter BS Sieves, 200mm Diameter BS Sieves, 200mm Diameter BS Sieves

Standards

ISO 565, EN933-2, BS410-1

Further Information

****NOT AVAILABLE FOR SALE IN THE USA****



200mm Dia BS Sieve 212Mic Stainless Steel Mesh.

Code: 79-0140

Product Group: 200mm Diameter BS Sieves, 200mm Diameter BS Sieves, 200mm Diameter BS Sieves

Standards

BS 410-1, ISO 3310, ISO 565, EN933-2

Further Information

****NOT AVAILABLE FOR SALE IN THE USA****