



IF IT'S WORTH BUILDING, IT'S WORTH TESTING

This wishlist was generated on 14/07/2017, and contains the following Products:

---

26-2114/01

**Digital Direct/Residual Shear Apparatus Complete with Lever Loading Assembly. 220-240V 50/60Hz 1Ph.**

---

26-2132

**Set of Weights 50 kg Slotted.**

---

26-2197

**Shear Box Assembly 100mm Sq.**

---

26-2201

**Specimen Cutter 100mmsq.**

---

26-2205

**Specimen Extrusion Tool 100 mm sq**

---

27-1561

**S-Type Load Cell 5 kN.for Use with Direct/ Residual Shear Machine. Fitted with 5 Pin Din Plug.**

---

27-1689

**Vertical Displacement Transducer Assembly 15mm Travel with 5 Pin Din Plug Bracket for Shear Box**

---

27-1697

**Horizontal Displacement Transducer Assembly 15mm Travel 5 Pin Din Plug Mounting Pillar**

---

27-1793

**DS7.2 Direct and Residual Shear Strength Program for Windows 7, 32/64 bit**

---

26-2197/10

**Porous Plate 100mm Sq.**

---

77-0115

**Digital Point Load Test Apparatus.**

---

24-9150/01

**Cbr-Test 50 Machine 50kN Capacity BS and ASTM Supplied with Stabilising Bar.**

---

24-9182

**Penetration Piston**

---

---

24-9188

**Bracket and Adaptor. Dual Purpose Mounting Bracket for CBR Penetration Gauges EL24-9184/EL24-9186**

---

24-9214

**2Kg Annular Surcharge Weight**

---

24-9216

**2Kg Split Surcharge Weight.**

---

27-1300/01

**DSU Electronic Readout and Control System 220 - 240 V AC 50/60 Hz**

---

27-1559

**50kN S-type Load Cell**

---

27-1705

**CBR Penetration Transducer 50mm Travel Fitted with 5 Pin Din Plug.**

---

24-9198

**BS Cbr Mould Body.**

---

24-9200

**BS Extension Collar**

---

24-9204

**BS Solid Base or Top Plate**

---

24-9202

**BS Perforated Base Plate.**

---

24-9206

**Cbr Cutting Collar with Area Ratio of 21.9% to Fit BS Moulds.**

---

24-9208

**C-Spanner for BS Cbr Mould. Two Required.**

---

24-9210

**Base Plate Tool for BS Mould**

---

24-9212

**Static Compaction Plug.**

---

24-9237

**Spacer Disc 5-7/8" Diameter**

---

24-9220

**Filter Papers 150mm Dia Equivalent to Whatman No 1. Box of 100.**

---

24-9095/01

**Automatic Soils Compactor ASTM 220-240V 50Hz 1Ph.**

---

27-1798

**DS7.2 California Bearing Ratio (CBR) Penetration Program for Windows 7, 32/64 bit**

---

70-2630/01

**ELE-Hoek Cell ADR Touch 2000 Compression Machine. 220 - 240 V 50/60Hz**

---

24-0417/01

**Motorised Liquid Limit Device W/ Counter BS 220-240V 50Hz 1Ph.**

---

24-0425

**Grooving Tool and Gauge B.S.**

---

24-0430

**Glass Plate.**

---

78-5405/01

**Electronic Balance - 620 g x 0.001 g**

---

78-5447/01

**Electronic Balance - 3600g x 0.01g**

---

78-5456/01

**Electronic Balance - 4600 g x 0.01 g**

---

42-4500

**75mm Aggregate Crushing Value Apparatus. Supplied Complete with Metal Measure and Tamping Rod.**

---

503-062

**Hand-Held Anemometer.**

---

45-9330

**Residual Pressure Manometer**

---

29-3720

**Dynamic Cone Penetrometer 8Kg Hammer (Trl Design).**

---

80-0200/01

**ELE Sieve Shaker**

---

79-0010

**200 mm Diameter Lid**

---

79-0020

**200 mm Diameter Receiver**

---

79-0070

**200mm Dia BS Sieve 63 Mic Stainless Steel Mesh.**

---

79-0120

**200mm Dia BS Sieve 150 Mic Stainless Steel Mesh.**

---

79-0140

**200mm Dia BS Sieve 212Mic Stainless Steel Mesh.**

---

79-0160

**200mm Dia BS Sieve 300Mic Stainless Steel Mesh.**

---

79-0180

**200mm Dia BS Sieve 425Mic Stainless Steel Mesh.**

---



## Digital Direct/Residual Shear Apparatus Complete with Lever Loading Assembly. 220-240V 50/60Hz 1Ph.

Code: 26-2114/01

Product Group: [Direct/Residual Shear Apparatus](#),  
[Direct/Residual Shear Apparatus](#)

- Microprocessor control
- Large on-board LCD screen display
- Direct entry via touch sensitive keyboard
- Rapid approach and return to start datum
- Fully variable speed, 0.00001 to 9.99999 mm/minute
- Accepts specimens up to 100 mm square

The ELE Direct Shear Apparatus accepts specimens 60 mm, 100 mm square or 2.5 inches in diameter. The use of a microprocessor controlled drive system and keyboard entry gives the apparatus a wide range of features that include pause and speed reset during test, RS 232C interface, operator programming of speed and control functions, self test diagnostics and many other features. A return to start datum provides a positive means of reversing the shearbox when either preparing for a new test or continuing with residual testing procedures.

Safety forward/reverse travel limit switches are fitted as standard and monitored through the electronics system control.

The electronics are housed in a modern moulded shroud, which includes a large LCD display and keyboard entry. The apparatus is enclosed in a robustly constructed case, has been designed for floor mounting and is supplied complete with carriage, loading hanger and 10:1 lever loading device.

## Standards

ASTM D3080, AASHTO T236, BS 1377, EN 1997-2

## Further Information

for 220 - 240 V AC, 50 - 60 Hz, 1 ph.

## Specification

Sample Size

Accepts either 2.42", 2.5" diam.; 60 mm square samples using accessory shear box assemblies, not included.

Speed Range

Variable in either English or Metric units



Shear Force  
Vertical Load

Dimensions

Weight

between 0.000001"  
(0.00001 mm) to 0.399999"  
(9.99999  
mm) per minute.  
1,100 lbf. (5.0 kN) maximum.  
2,200 lbf. (10.0 kN) using 10:1  
lever ratio.  
44.7" l. x 12 .6" w. x 49.6" h.  
(1,135 x 320 x 1,260 mm).  
Net 181 lbs. (82 kg).

## Accessories



### Clamped Boss Load Ring - 2.0 kN

Code: [78-0060](#)



### Clamped Boss Load Ring - 3.0 kN

Code: [78-0160](#)



### Clamped Boss Load Ring - 4.5 kN

Code: [78-0260](#)



### Dial Gauge 10mm Travel X 0.002mm Divisions.

Code: [25-0440](#)



## Digital Proving Ring, 1,000 lbs (4.5 kN)

Code: [78-0264](#)



## Digital Proving Ring, 450 lbs (2.0 kN)

Code: [78-0064](#)



## Horizontal Displacement Transducer Assembly 15mm Travel 5 Pin Din Plug Mounting Pillar

Code: [27-1697](#)



## Mechanical Dial Indicator - 25 mm Range Clockwise Movement

Code: [88-4110](#)



## S-Type Load Cell 5 kN.for Triaxial Tests. Fitted with 5 Pin Din Plug.

Code: [27-1551](#)





## Set of Weights 50 kg Slotted.

Code: [26-2132](#)



## Shear Box Assembly 100mm Sq.

Code: [26-2197](#)



## Shear Box Assembly 2.5 Inch Diameter

Code: [26-2213](#)



## Shear Box Assembly 60mm Sq.

Code: [26-2181](#)



## Vertical Displacement Transducer Assembly 15mm Travel with 5 Pin Din Plug Bracket for Shear Box

Code: [27-1689](#)



## Weight Set A

Code: [25-0535](#)



## Weight Set B

Code: [25-0537](#)

## Spares/Consumables



## Dial Indicator - 1.0" Range

Code: [88-4100](#)



## Electronic Digital Indicator, 0.600"/15 mm range

Code: [88-4210](#)



## Vertical Dial Indicator, English

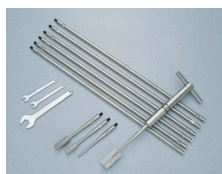
Code: [25-0445](#)

## Alternatives



## Digital Direct/Residual Shear Apparatus Complete with Lever Loading Assembly. 110-120V 50/60Hz 1Ph.

Code: [26-2114/02](#)



## H60 Field Inspection Vane Tester 0-200Kpa In Carrying Case. includes calibration and certificates.

Code: [26-3335](#)



## Hand Vane Tester

Code: [26-3346](#)



## Laboratory Vane Apparatus with 4 Springs and 12.7mm Vane; Hand Operated.

Code: [26-2270](#)



## Pocket Shearmeter with 3 Vanes 0 to 1Kgf/Cm2 X 0.5Kgf/Cm2.

Code: [26-2261](#)



## Set of Weights 50 kg Slotted.

Code: [26-2132](#)

Product Group: [Application of Normal Stress](#)

Normal stress is applied to the specimen through the lever loading device and the appropriate slotted weights

## Accessories



### Slotted Surcharge Weight 0.25 kg

Code: [26-2147](#)



### Slotted Surcharge Weight 0.5 kg.

Code: [26-2145](#)



### Slotted Surcharge Weight 1 kg.

Code: [26-2143](#)



## Slotted Surcharge Weight 10 kg.

Code: [26-2137](#)



## Slotted Surcharge Weight 2 kg.

Code: [26-2141](#)



## Slotted Surcharge Weight 5 kg.

Code: [26-2139](#)

### Alternatives



## Slotted Surcharge Weight 0.25 kg

Code: [26-2147](#)



## Slotted Surcharge Weight 0.5 kg.

Code: [26-2145](#)



## Slotted Surcharge Weight 1 kg.

Code: [26-2143](#)



## Slotted Surcharge Weight 10 kg.

Code: [26-2137](#)



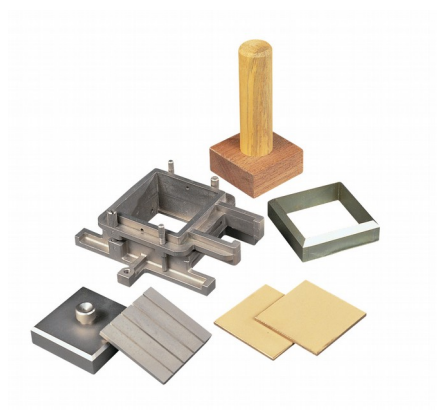
## Slotted Surcharge Weight 2 kg.

Code: [26-2141](#)



## Slotted Surcharge Weight 5 kg.

Code: [26-2139](#)



## Shear Box Assembly 100mm Sq.

Code: [26-2197](#)

Product Group: [Shear Box Assemblies](#), [Shear Box Assemblies](#)

- Manufactured from corrosion resistant materials
- Sample size 100 x 100mm x 25mm high meeting BS 1377
- Incorporates PTFE faced box separation screws to reduce friction
- Supplied complete with upper and lower porous plates and loading pad
- Suitable for quick undrained or drained/residual tests.

## Standards

ASTM D3080, AASHTO T236

## Further Information

All shearbox assemblies are designed to fit the carriage of 26-2114 series Digital Direct/Residual Shear Apparatus. They are supplied complete with three porous plates, one retaining plate and a loading pad. The three sizes supplied comply with the relevant requirements of BS 1377 and ASTM D3080. All assemblies can be used for quick shear tests or drained/residual shear tests.

Optional accessories are available including specimen cutters and extrusion tools.

## Specification

Specimen area	100 x 100 mm
Specimen thickness	25 mm
Weight kg	5.2
Relevant standard	BS 1377

## Accessories



## Shear Box Assembly 60mm Sq.

Code: [26-2181](#)

## Spares/Consumables





## Specimen Cutter 100mmsq.

Code: 26-2201

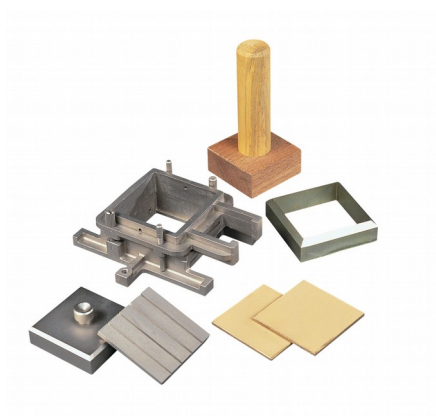
---

### Alternatives



## Shear Box Assembly 60mm Sq.

Code: 26-2181



## Specimen Cutter 100mmsq.

Code: [26-2201](#)

Product Group: [Shearbox Assemblies- Accessories and Spares](#)

## Standards

ASTM D3080, AASHTO T236

## Accessories



## Shear Box Assembly 100mm Sq.

Code: [26-2197](#)

## Spares/Consumables



## Specimen Cutter 2.5 Inch Diameter.

Code: [26-2217](#)



## Specimen Cutter 60mm Sq.

Code: [26-2185](#)

## Alternatives



## Specimen Cutter 2.5 Inch Diameter.

Code: 26-2217



## Specimen Cutter 60mm Sq.

Code: 26-2185



## Specimen Extrusion Tool 100 mm sq

Code: [26-2205](#)

Product Group: [Shearbox Assemblies- Accessories and Spares](#)

### Standards

ASTM D3080, AASHTO T236



## S-Type Load Cell 5 kN.for Use with Direct/Residual Shear Machine. Fitted with 5 Pin Din Plug.

Code: [27-1561](#)

Product Group: [Load Measurement, Measurement of Load \(Shear Stress\)](#)

- Repeatability better than  $\pm 0.02\%$  of rated output
- Non-Linearity better than  $\pm 0.03\%$  of rated output
- Supplied complete with 5-pin DIN type connector for connection to GDU

Ideally suited for a wide range of applications, ELE S-type load cells provide high accuracy and minimum deformation. Various models are available, with the necessary adaptors, for use with ELE Triaxial Load Frames, Multiplex 50/Marshall Test 50/CBR Test 50 and Direct Shear machine.

## Standards

BS 1377, ASTM D3080

## Accessories



## S-Type Load Cell 5 kN.for Triaxial Tests. Fitted with 5 Pin Din Plug.

Code: [27-1551](#)

## Alternatives



## S-Type Load Cell 5 kN.for Triaxial Tests. Fitted with 5 Pin Din Plug.

Code: [27-1551](#)



## Vertical Displacement Transducer Assembly 15mm Travel with 5 Pin Din Plug Bracket for Shear Box

Code: 27-1689

Product Group: [Displacement Measurement, Measurement of Horizontal and Vertical Movement, Displacement Transducers](#)

0 to 10 mm range. For use with Direct/Residual Shear Machines. •Ideally suited for use with GDU for accurate displacement measurements

- Models available for use in consolidation, shear, CBR and triaxial test applications
- Supplied complete with mounting hardware for specified products

Displacement Transducers are used in consolidation, shear, CBR and triaxial test applications for accurate displacement measurements. They are supplied complete with a 5-pin DIN type connector for direct connection to the GDU.

## Specification

Construction	Fully encapsulated electronics, sealed in a stainless steel case
Excitation	12 V DC
Connector	5-pin DIN type
Mounting bracket	Included as standard
Weight kg	0.45
Construction	Fully encapsulated electronics, sealed in a stainless steel case.
Excitation	10vDC.
Connector	5-Pin DIN type.
Mounting Bracket	Included as standard.
Weight	Net 1 lb. (0.45 kg).

## Accessories



## Axial Strain Transducer Assembly 50mm Travel Fitted with 5 Pin Din Plug.

Code: [27-1617](#)



## Horizontal Displacement Transducer Assembly 15mm Travel 5 Pin Din Plug Mounting Pillar

Code: [27-1697](#)

### Spares/Consumables



## CBR Displacement Transducer

Code: [27-1706](#)

### Alternatives



## Axial Strain Transducer Assembly 50mm Travel Fitted with 5 Pin Din Plug.

Code: [27-1617](#)





## Horizontal Displacement Transducer Assembly 15mm Travel 5 Pin Din Plug Mounting Pillar

Code: [27-1697](#)



## Horizontal Displacement Transducer Assembly 15mm Travel 5 Pin Din Plug Mounting Pillar

Code: [27-1697](#)

Product Group: [Displacement Measurement, Measurement of Horizontal and Vertical Movement, Displacement Transducers](#)

- Ideally suited for use with GDU for accurate displacement measurements
- Models available for use in consolidation, shear, CBR and triaxial test applications
- Supplied complete with mounting hardware for specified products

Displacement Transducers are used in consolidation, shear, CBR and triaxial test applications for accurate displacement measurements. They are supplied complete with a 5-pin DIN type connector for direct connection to the GDU.

## Specification

Construction	Fully encapsulated electronics, sealed in a stainless steel case
Excitation	13 V DC
Connector	5-pin DIN type
Mounting bracket	Included as standard
Weight kg	0.45
Construction	Fully encapsulated electronics, sealed in a stainless steel case.
Excitation	10vDC.
Connector	5-Pin DIN type.
Mounting Bracket	Included as standard.
Weight	Net 1 lb. (0.45 kg).

## Accessories



## Axial Strain Transducer Assembly 50mm Travel Fitted with 5 Pin Din Plug.

Code: [27-1617](#)



## Vertical Displacement Transducer Assembly 15mm Travel with 5 Pin Din Plug Bracket for Shear Box

Code: [27-1689](#)

### Spares/Consumables



## CBR Displacement Transducer

Code: [27-1706](#)

### Alternatives



## Axial Strain Transducer Assembly 50mm Travel Fitted with 5 Pin Din Plug.

Code: [27-1617](#)



## Vertical Displacement Transducer Assembly 15mm Travel with 5 Pin Din Plug Bracket for Shear Box

Code: [27-1689](#)

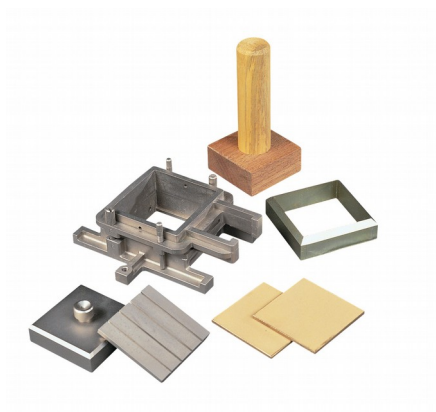


## DS7.2 Direct and Residual Shear Strength Program for Windows 7, 32/64 bit

Code: [27-1793](#)

Product Group: [DS7](#), [DS7.2 Direct/Residual Shear Software](#), [Automatic Data Acquisition - Direct Shear](#)

This unique package provides test options for quick undrained or drained shear tests with the user selectable option of residual testing. Individual test results can be linked together to produce the Coulomb Envelope. Printouts and plots are available for sample description and basic test data such as moisture content, etc. Realtime plots of settlement, shear versus displacement and vertical displacement during shearing is readily available via the PC screen or printer.



## Porous Plate 100mm Sq.

Code: [26-2197/10](#)

Product Group: [Shearbox Assemblies- Accessories and Spares](#)

## Standards

ASTM D3080, AASHTO T236



## Digital Point Load Test Apparatus.

Code: 77-0115

Product Group: [Digital Point Load Tester](#), [Point-Load Strength Test](#)

Originally developed at Imperial College, London, the apparatus comprises a two-column fixed crosshead frame and a hand operated hydraulic jack.

Pressure applied by the jack extends the piston carrying the lower conical point. The upper point is fixed to the crosshead with a scale mounted on the frame to provide specimen diameter information for use in point load strength index calculations. Pressure is indicated directly on the digital readout unit. Loads up to 55 kN can be applied to specimens as large as 101.6 mm in diameter.

The apparatus is supplied complete with heavy-duty face mask.

## Standards

EN DD ENV 1997-2, ASTM D5731

## Specification

Capacity	55 kN
Maximum sample size	101.6 mm
Load range	0 to 55 kN x 0.001 kN
Weight	25 kg
Capacity	13 ,000 lbf. (55 kN).
Specimen Size	4" (101.6 mm) maximum.
Load Range	0-13 ,000 lbf. (55 kN) x 0.2 lbf. (0.001 kN).
Weight	Net 60 lbs. (27.2 kg).

## Spares/Consumables



## Set of Cones for Digital Point Load Tester

Code: 77-0115/10

## Alternatives



### Rock Classification Hammer

Code: [77-0470](#)





## Cbr-Test 50 Machine 50kN Capacity BS and ASTM Supplied with Stabilising Bar.

Code: [24-9150/01](#)

Product Group: [CBR Load Frames](#)

- Single speed machine (BS/EN and ASTM)
- Rapid platen adjustment
- Complete with stabilising bar
- Compact, bench-mounting design
- Options for mechanical or electronic measurement

Designed for performing laboratory CBR tests to BS 1377, EN13286-47 and ASTM D1883, this bench mounting machine comprises a twin column frame incorporating a motorised drive system. Rapid adjustment of the platen is provided, which enables daylight to be taken up quickly and also close control of application of a seating load.

## Standards

BS 1377, BS 1924, EN 13286-47, ASTM D1883, AASHTO T193

## Specification

Dimensions (l x w x h)	550 x 400 x 1220 mm
Max vertical clearance	800 mm
Horizontal clearance	255 mm
Platen diameter	133 mm
Platen travel	105 mm
Weight kg	80

## Accessories



### 50kN Clamped Boss Load Ring

Code: [78-0860](#)



### 50kN S-type Load Cell

Code: [27-1559](#)



## ASTM Cbr Mould Complete with Collar & Perforated Base

Code: [24-9228](#)

---



## BS Cbr Mould Body.

Code: [24-9198](#)

---



## BS Extension Collar

Code: [24-9200](#)

---



## BS Solid Base or Top Plate

Code: [24-9204](#)

---



## Cbr Penetration Piston (Adjustable).

Code: [24-9183](#)

---



## CBR Penetration Transducer 50mm Travel Fitted with 5 Pin Din Plug.

Code: [27-1705](#)



## Clamped Boss Load Ring - 10.0 kN

Code: [78-0460](#)



## Clamped Boss Load Ring - 2.0 kN

Code: [78-0060](#)



## Clamped Boss Load Ring - 28.0 kN

Code: [78-0760](#)



## Penetration Dial Gauge BS

Code: [24-9186](#)



## Penetration Piston

Code: [24-9182](#)



## Penetration/Swell Dial Gauge ASTM.

Code: [24-9184](#)

## Alternatives



## CBR-Test 50 Machine 50 kN Capacity BS and ASTM Supplied with Stabilising Bar.

Code: [24-9150/02](#)



## Cbr-Test 50 Machine 50kN Capacity BS and ASTM Supplied with Stabilising Bar.

Code: [24-9150/06](#)



## Cbr-Test 50 Machine 50kN Capacity BS and ASTM Supplied with Stabilising Bar.

Code: [24-9150/01](#)



## MultiPlex 50 Load Frame

Code: [25-3700/01](#)



## Penetration Piston

Code: [24-9182](#)

Product Group: [Penetration Measurement](#)

1.935 mm<sup>2</sup> (3 in<sup>2</sup>) area foot of case hardened steel.  
Designed to fit all ELE load rings.



## Bracket and Adaptor. Dual Purpose Mounting Bracket for CBR Penetration Gauges EL24-9184/EL24-9186

Code: 24-9188

Product Group: In-situ CBR, Conversion of In-situ to Laboratory CBR, Penetration Measurement

Dual purpose mounting bracket for CBR penetration dial gauges. Allows gauge to be fixed to penetration piston or load ring.

### Standards

BS 1377, BS 1924





## 2Kg Annular Surcharge Weight

Code: [24-9214](#)

Product Group: [BS EN CBR mould accessories](#)

## Standards

EN 13286-4, BS 1377-4, BS 1924-2

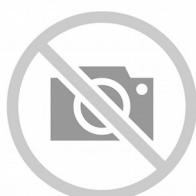
## Accessories



### BS Solid Base or Top Plate

Code: [24-9204](#)

## Alternatives



### BS Solid Base or Top Plate

Code: [24-9204](#)



## 2Kg Split Surcharge Weight.

Code: [24-9216](#)

Product Group: [BS EN CBR mould accessories](#)

## Standards

EN 13286-4, BS 1377-4, BS 1924-2



## DSU Electronic Readout and Control System 220 - 240 V AC 50/60 Hz

Code: [27-1300/01](#)

Product Group: [Data Logging with the DSU](#), [Electronic Instrumentation](#), [Electronic Instrumentation](#), [Data Logging with the DSU](#)

· Download the full brochure here  
[[/Page/catalogue-download/NTRmZS9UaGUgTkVXIERTVSBVU0EucGRm](#)]

- 4 channel automatic control and data-logging unit
- Automatic, dual-frame control
- Performs CBR, Marshall, Unconfined Compression, Direct and Residual Shear, One-Dimensional Consolidation and Unconsolidated Undrained tests
- LAN connection - software can be running anywhere on your server
- Never lose data from power fails - 2 gigabytes of non-volatile memory
- Extended warranty

The Data System Unit (DSU) is a versatile instrument designed to accommodate the general logging requirements of geotechnical and materials testing engineers. Its intelligent interface allows the user to work with a range of different sensors.

## Further Information

The DSU has two distinct modes of operation. The first is referred to as DS mode (DataSystem) for operation with ELE International's established DS7 geotechnical testing software.

### DS MODE

- Up to four one dimensional consolidation tests
- Up to two CBR tests
- One direct/residual shear test
- One triaxial quick un-drained test

### DU MODE

- Up to two Marshall tests
- Up to two CBR tests
- Up to two Unconfined compression tests
- Automatic frame control

### OVERVIEW

- Touch Screen data entry for standalone operation, Marshall/CBR/Quick un-drained

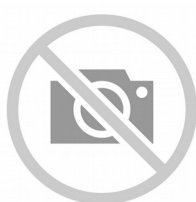
- Automatic single and dual frame control (with multiplex 50 frame)
- Log memory of 2 gigabytes
- Non-volatile memory
- Ethernet TCPIP link and serial comms support
- Market leading signal stability
- Certificate and manual calibration features

Become a member of the ELE International web site, add this new product to a wishlist to receive a quote! Click here [Login]

This product is now available in the USA and Canada!

---

## Accessories



### Cable, Safety/ID

Code: [27-1300/11](#)



### Dual Frame Comms Cable

Code: [27-1300/10](#)



### PC Cable

Code: [27-1300/12](#)

---

## Alternatives



### DSU Electronic Readout and Control System 110 V AC 60 Hz

Code: [27-1300/02](#)



## Marshall Test 50

Code: [45-6810/01](#)



## Marshall Test 50

Code: [45-6810/06](#)



## 50kN S-type Load Cell

Code: [27-1559](#)

Product Group: [Load Measurement](#), [Electronic Instrumentation](#), [Force measurement](#), [Electronic Instrumentation](#)

Maximum working capacity of 50 kN and excitation 10 V ac/dc with an output of 2.7 mV/V nominal.

Aluminium alloy and stainless steel construction with IP65 environmental protection.

## Standards

EN 12697-34

## Further Information

**\*\*NOT AVAILABLE FOR SALE IN THE USA\*\***

## Accessories



## Breaking Head (Marshall)

Code: [45-6850](#)



## S-Type Load Cell 5 kN.for Triaxial Tests. Fitted with 5 Pin Din Plug.

Code: [27-1551](#)

## Alternatives



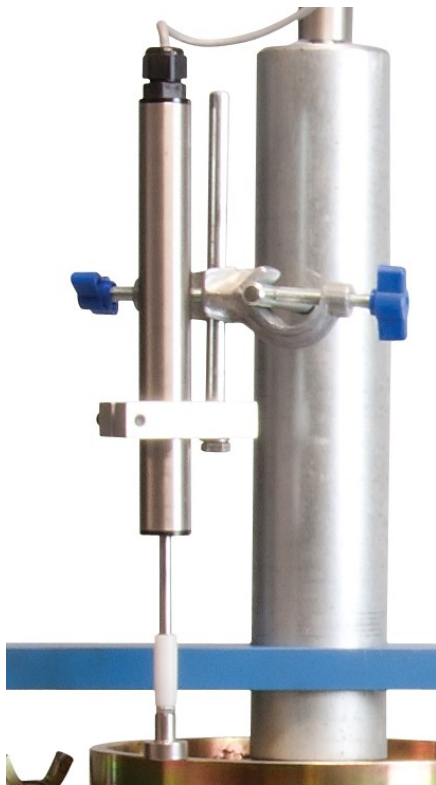
## Breaking Head (Marshall)

Code: [45-6850](#)



## S-Type Load Cell 5 kN.for Triaxial Tests. Fitted with 5 Pin Din Plug.

Code: [27-1551](#)



## CBR Penetration Transducer 50mm Travel Fitted with 5 Pin Din Plug.

Code: [27-1705](#)

Product Group: [Penetration Measurement](#),  
[Penetration Measurement](#)

- Ideally suited for use with GDU for accurate displacement measurements
- Models available for use in consolidation, shear, CBR and triaxial test applications
- Supplied complete with mounting hardware for specified products

Displacement Transducers are used in consolidation, shear, CBR and triaxial test applications for accurate displacement measurements. They are supplied complete with a 5-pin DIN type connector for direct connection to the GDU.

## Specification

Construction	Fully encapsulated electronics, sealed in a stainless steel case
Excitation	14 V DC
Connector	5-pin DIN type
Mounting bracket	Included as standard
Weight kg	0.45





## BS Cbr Mould Body.

Code: 24-9198

Product Group: BS EN CBR mould, Accessories for  
BS compaction and CBR

## Standards

ASTM D1883, AASHTO T193

## Specification

Mould	152 x 127 mm (inside diameter x height)
Collar	51 mm height, fits both ends of mould
Base plate	Solid, fits both ends of mould
Construction	All steel, plated
Weight kg	7.3



## BS Extension Collar

Code: [24-9200](#)

Product Group: [BS EN CBR mould accessories](#),  
[Accessories for BS compaction and CBR](#)

## Standards

EN 13286-4, BS 1377-4, BS 1924-2



## BS Solid Base or Top Plate

Code: [24-9204](#)

Product Group: [BS EN CBR mould accessories](#),  
[Accessories for BS compaction and CBR](#)

## Standards

EN 13286-4, BS 1377-4, BS 1924-2

## Accessories



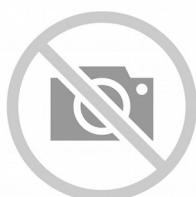
### 2Kg Annular Surcharge Weight

Code: [24-9214](#)



### Base Plate Tool for BS Mould

Code: [24-9210](#)



### BS Perforated Base Plate.

Code: [24-9202](#)



## **Cbr Cutting Collar with Area Ratio of 21.9% to Fit BS Moulds.**

Code: [24-9206](#)



## **Filter Papers 150mm Dia Equivalent to Whatman No 1. Box of 100.**

Code: [24-9220](#)

### **Alternatives**



## **2Kg Annular Surcharge Weight**

Code: [24-9214](#)



## **Base Plate Tool for BS Mould**

Code: [24-9210](#)



## **BS Perforated Base Plate.**

Code: [24-9202](#)



## **Cbr Cutting Collar with Area Ratio of 21.9% to Fit BS Moulds.**

Code: [24-9206](#)



## **Filter Papers 150mm Dia Equivalent to Whatman No 1. Box of 100.**

Code: [24-9220](#)



## BS Perforated Base Plate.

Code: [24-9202](#)

Product Group: [BS EN CBR mould accessories](#)

To fit mould body

## Standards

EN 13286-4, BS 1377-4, BS 1924-2

## Accessories



### BS Solid Base or Top Plate

Code: [24-9204](#)

## Alternatives



### BS Solid Base or Top Plate

Code: [24-9204](#)



## Cbr Cutting Collar with Area Ratio of 21.9% to Fit BS Moulds.

Code: [24-9206](#)

Product Group: [BS EN CBR mould accessories](#)

To fit BS/EN mould body.

## Standards

EN 13286-4, BS 1377-4, BS 1924-2

## Accessories



### BS Solid Base or Top Plate

Code: [24-9204](#)

## Alternatives



### BS Solid Base or Top Plate

Code: [24-9204](#)



## C-Scanner for BS Cbr Mould. Two Required.

Code: [24-9208](#)

Product Group: [BS EN CBR mould accessories](#)

To fit BS/EN CBR moulds and collars. Two required.

## Standards

BS 1377-4, BS 1924-2, EN 13286-4





## Base Plate Tool for BS Mould

Code: [24-9210](#)

Product Group: [BS EN CBR mould accessories](#)

To fit into base plate to assist removal from mould body.

## Standards

EN 13286-4, BS 1377-4, BS 1924-2

## Accessories



### BS Solid Base or Top Plate

Code: [24-9204](#)

## Alternatives



### BS Solid Base or Top Plate

Code: [24-9204](#)



## Static Compaction Plug.

Code: [24-9212](#)

Product Group: [BS EN CBR mould accessories](#)

Steel, 150 mm dia x 51 mm thick. Complete with removable handle.

## Standards

EN 13286-4, BS 1377-4, BS 1924-2



## Spacer Disc 5-7/8" Diameter

Code: [24-9237](#)

Product Group: [Spacer Discs](#)

5-7/8" diam. x 2" h. (147.6 x 50.8 mm).

## Specification

Construction

Steel; machined on all sides.

Finish

Plated.

Weights

Net 15.4 lbs. (7 kg).

## Accessories



## ASTM Spacing Disc.

Code: [24-9238](#)



## Filter Papers 150mm Dia Equivalent to Whatman No 1. Box of 100.

Code: [24-9220](#)

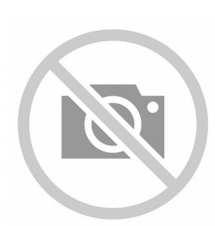
Product Group: [BS EN CBR mould accessories](#)

Box of 100.

## Standards

EN 13286-4, BS 1377-4, BS 1924-2

## Accessories



### BS Solid Base or Top Plate

Code: [24-9204](#)

## Alternatives



### BS Solid Base or Top Plate

Code: [24-9204](#)



## Automatic Soils Compactor ASTM 220-240V 50Hz 1Ph.

Code: [24-9095/01](#)

Product Group: [Automatic Compactors](#), [Automatic Soil Compactor](#)

### Standards

ASTM D558, ASTM D559, ASTM D560, ASTM D698, ASTM D1557, AASHTO T99, AASHTO T134, AASHTO T135, AASHTO T136, AASHTO T180, AASHTO T193

### Specification

Hammer	Circular faced, 2.0" (50.8 mm) dia. foot; selectable to either 5.5 lb.(2.5 kg) or 10 lb. (4.5 kg) weight.
Drop	Adjustable to either 12 " (305 mm) or 18" (457 mm)
Controls	Digital counter system, selector switch for either standard proctor test or modified proctor/CBR testing.
Dimensions	10" w. x 17" d. x 55 " h. (250 x 430 x 1,400 mm).
Weight	Net 41.9 lbs. (190 kg).

### Accessories



## ASTM Compaction Mould 152mm.

Code: [24-9066](#)



## Calibration Kit For Automatic Soil Compactor

Code: [24-9095/12](#)



## Proctor Mould

Code: [24-9060](#)

## Spares/Consumables



## Lead Cylinders

Code: [24-9095/13](#)



## Modified Compaction Mould

Code: [24-9098](#)



## Standard Compaction Mould

Code: [24-9097](#)

## Alternatives



## Automatic Soil Compactor ASTM 110-120V 60Hz 1Ph

Code: [24-9095/02](#)



## Automatic Soils Compactor ASTM 220-240V 60Hz 1Ph.

Code: [24-9095/06](#)



## **DS7.2 California Bearing Ratio (CBR) Penetration Program for Windows 7, 32/64 bit**

Code: [27-1798](#)

Product Group: [DS7, Automatic Data Acquisition - CBR](#), [DS7.2 CBR Penetration Software](#)

This program provides the classical data for the CBR test. Load and penetration are monitored simultaneously. The program tabulates the results and provides a graphical presentation report.





## ELE-Hoek Cell ADR Touch 2000 Compression Machine. 220 - 240 V 50/60H Z

Code: [70-2630/01](#)

Product Group: [Triaxial Testing](#)

- High stability load frame
- Calibration accuracy satisfies BS EN ISO 7500-1, ASTM E4

This machine incorporates the ADR Touch Microprocessor System. The ADR is designed to minimise data entry during normal testing procedures. These machines are specially adapted for use with ELE Hoek Triaxial Cells and feature fixed upper and lower platens with locations to centralise the triaxial cell assembly for maximum stability.

### Standards

BS EN ISO 7500-1, ASTM E4

### Further Information

Supplied complete with digital readout, power pack, special upper and lower platens and gates. For 220 - 240 V AC, 50 - 60 Hz, 1 ph.

### Specification

Dimensions (l x w x h)	520 x 700 x 1300 mm
Capacity	2000 kN
Ram travel	50 mm
Display	ADR Digital Readout
Platen diameter	178 mm
Accuracy	Better than $\pm 1\%$ over upper 90% of working range
Rated power	1350 W
Weight	600 kg

### Accessories



## Nylon Tubing 6mm Od 3500Kpa.

Code: [26-1926](#)



## Specimen Extruder Bench Mounting Frame for Extruding Specimens From Hoek Cells

Code: [70-2725](#)

---



## Standard Distance Piece - 20 mm Depth

Code: [37-4980](#)

---



## Support Assembly

Code: [81-0094](#)

---

## Spares/Consumables



## Spare Jacket Nx Size.

Code: [70-1712](#)

---

## Alternatives



## ELE-Hoek Cell Nx 54.74mm Diameter.

Code: [70-1710](#)

---



## Hand Operated Pressure System. Complete with Pressure Gauge and Flexible Hose.

Code: [70-5000](#)



## Pair of Permeability End Caps Nx. Supplied with Distance Block.

Code: [70-1750](#)



## Pressure Test 3500 Oil/Water Constant Pressure System with Digital Pressure Gauge.

Code: [70-5130/01](#)



## Motorised Liquid Limit Device W/ Counter BS 220-240V 50Hz 1Ph.

Code: [24-0417/01](#)

Product Group: [Casagrande Method](#)

Complete with revolution counter and motor.

## Standards

BS 1377-2

## Accessories



### Glass Plate.

Code: [24-0430](#)



## Grooving Tool and Gauge B.S.

Code: [24-0425](#)

## Alternatives



## Liquid Limit Device BS with Counter. C/W Metal Grooving Tool & Test Gauge.

Code: [24-0410](#)



## Grooving Tool and Gauge B.S.

Code: [24-0425](#)

Product Group: [Casagrande Method](#)

Constructed to British Standards.

## Standards

BS 1377-2



## Glass Plate.

Code: [24-0430](#)

Product Group: [Casagrande Method, Determination of Plastic Limit](#)

500 mm square x 10 mm thick.

## Standards

BS 1377-2



## Electronic Balance - 620 g x 0.001 g

Code: [78-5405/01](#)

Product Group: [Electronic Balances](#)

## Further Information

**\*\*Not available for sale in the USA\*\***

## Specification

Capacity resolution	620 g x 0.001 g
Pan size	125 x 125 mm
Mains and battery	No
Dimensions (w x d x h)	220 x 310 x 270 mm
Weight	6 kg
Weighing units	g, mg, ct, GN, N, lb, oz, lb:oz, ozt, dwt, T, custom unit
Readability	0.001 g



## Electronic Balance - 3600g x 0.01g

Code: [78-5447/01](#)

Product Group: [Electronic Balances](#)

## Further Information

**\*\*Not available for sale in the USA\*\***

## Specification

Capacity resolution	3600 g x 0.01 g
Pan size	160 x 160 mm
Mains and battery	No
Dimensions (l x w x h)	260 x 170 x 90 mm
Weight	6 kg
Weighing units	g, kg, ct, GN, N, lb, oz, lb:oz, ozt, dwt, T, custom unit
Readability	0.1 g





## Electronic Balance - 4600 g x 0.01 g

Code: [78-5456/01](#)

Product Group: [Electronic Balances](#)

## Further Information

**\*\*Not available for sale in the USA\*\***

## Specification

Capacity resolution	4500 g x 0.01 g
Pan size	160 x 160 mm
Mains and battery	No
Dimensions (w x d x h)	220 x 310 x 90 mm
Weight	6 kg
Weighing units	g, kg, lb, lb:oz, oz, ozt, T, custom unit.
Repeatability	0.02 g
Power supply	100-240V, 50/60Hz, 1pH



## 75mm Aggregate Crushing Value Apparatus. Supplied Complete with Metal Measure and Tamping Rod.

Code: [42-4500](#)

Product Group: [Aggregate Crushing Value \(ACV\) and Ten Percent Fines Value \(TFV\)](#)

Comprising of 75 mm nominal diameter steel cylinder, plunger and base plate supplied complete with metal measure and tamping rod.

## Further Information

**\*\*NOT AVAILABLE FOR SALE IN THE USA\*\***

## Accessories



### Tamping Rod 8mm Dia X 300mm.

Code: [42-4580](#)

## Alternatives



## 150mm Aggregate Crushing Value Apparatus. Supplied Complete with Metal Measure and Tamping Rod.

Code: [42-4300](#)



## Hand-Held Anemometer.

Code: [503-062](#)

Product Group: [Wind measurement](#)

A robust, easy to use instrument of durable plastic construction. Wind strength/speed is clearly and accurately displayed on 4 scales (m/s, km/h, knots and Beaufort). A secure fitting transparent cap protects the cups when not in use.

## Further Information

Range 0 to 120 km/hr.

## Accessories



## Anemometer Cups. Set of 3.

Code: [503-062/10](#)



## Residual Pressure Manometer

Code: 45-9330

Product Group: Specific Gravity (Rice) Test with 2,000 gram Vacuum Pyknometer, Specific Gravity (Rice) Test with 6,000 gram Vacuum Pyknometer, Digital Residual Pressure Manometer Non-toxic

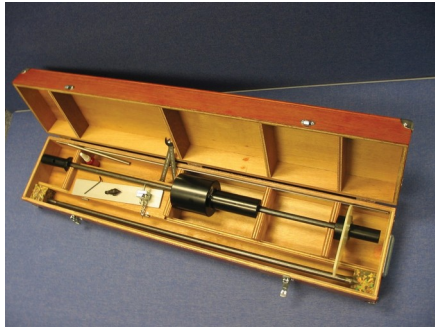
The digital residual pressure manometer is an accurate and non-toxic alternative to Mercury manometers used in the Rice Test. Ideal for field or laboratory use, the Model 45-9330 Single Pressure Digital Manometer measures low pressures from -20 to 20" w.c. (-37.4 to 37.4 mm Hg) with  $\pm 1.5\%$  full scale accuracy.

## Standards

ASTM D2041, EHS 9300, AASHTO T209, AASHTO T283

## Specification

Service.	Air and compatible gases.
Accuracy.	$\pm 1.5\%$ Full Scale @ 72F (22.2C). Includes linearity and repeatability.
Pressure Hysteresis.	$\pm 0.1\%$ of Full Scale.
Pressure Limits.	5 psig (0.34 bar).
Thermal Effect.	0.05% F.S./F
Display.	4 digit LCD (0.425"H x 0.234"W digits).
Power Requirements.	9 V alkaline battery, installed non-functional, user replaceable.
Process Connections.	Barbed connection for use with 3/16" or 1/4" I.D. tubing.
Weight.	10.8 oz (306 g).
Agency Approvals.	CE.



## Dynamic Cone Penetrometer 8Kg Hammer (Trl Design).

Code: [29-3720](#)

Product Group: [In-situ Testing](#)

The TRL (Transport Research Laboratory) Dynamic Cone Penetrometer (DCP) is used for rapid in-situ measurement of the structural properties of existing road pavement constructed with unbound materials. The unit incorporates an 8 kg weight with a drop of 575 mm, and a 20 mm diameter cone fitted to the end of the shaft, allowing measurements to be made down to a depth of approximately 850 mm.

Readings are usually taken after a set number of blows, changing the number according to the strength of the layer being penetrated. For good granular bases, readings every five to ten blows are satisfactory, but for weaker sub-base layers and subgrades, readings every one to two blows may be appropriate.

The DCP requires three operators, one to hold the instrument in a vertical position, one to raise the hammer and let it fall and one to record the results. A typical test takes only a few minutes, providing a very efficient method of obtaining information which would otherwise require the excavation of test pits. Where pavement layers have different strengths, boundaries can be identified and layer thickness determined.

## Further Information

Supplied complete with all necessary tools, assembly and operating instructions.

## Spares/Consumables



### Spare Cone for Dynamic Cone Penetrometer.

Code: [29-3720/10](#)



## ELE Sieve Shaker

Code: [80-0200/01](#)

Product Group: [ELE Sieve Shaker](#)

The ELE sieve shaker is powered by an electromagnetic drive that has no rotating parts to wear making it maintenance free and extremely quiet in operation.

The unit features a triple Vertical-Lateral-Rotary vibrating action that moves the sample over the sieve producing faster more efficient sieving, while the rapid vertical movements also help keep the apertures from blinding.

The shaker is ideal for laboratory or on site use. It is robust, compact and sufficiently lightweight to be portable. The separate digital microprocessor controlled console unit incorporates a keypad for setting the sieving program and is isolated from any effects of vibration from the shaker.

As standard the shaker includes, timer 0-999 minutes, adjustable vibration intensity and adjustable intermittent or continuous operation.

## Further Information

**\*\*NOT AVAILABLE FOR SALE IN THE USA\*\***

The unit accepts up to ten 200 mm or 8 inch, full height, diameter sieves and lid and receiver, or up to six 300 mm or 12 inch diameter sieves and lid and receiver. Complete as specified. Dimensions (l x w x h) 380 x 440 x 1085 mm. For 220 - 240 V AC, 50 Hz 1ph.



## 200 mm Diameter Lid

Code: 79-0010

Product Group: Sieve Lids and Receivers ISO and BS, 200mm Diameter BS Sieves, 200mm Diameter BS Sieves, 200mm Diameter BS Sieves

## Standards

BS 410-1, ISO 3310

## Further Information

**\*\*NOT AVAILABLE FOR SALE IN THE USA\*\***



## 200 mm Diameter Receiver

Code: 79-0020

Product Group: Sieve Lids and Receivers ISO and BS, 200mm Diameter BS Sieves, 200mm Diameter BS Sieves, 200mm Diameter BS Sieves

### Standards

BS 410-1, ISO 3310

### Further Information

\*\*NOT AVAILABLE FOR SALE IN THE USA\*\*





## 200mm Dia BS Sieve 63 Mic Stainless Steel Mesh.

Code: [79-0070](#)

Product Group: [200mm Diameter BS Sieves](#), [200mm Diameter BS Sieves](#), [200mm Diameter BS Sieves](#)

### Standards

BS 410-1, ISO 3310, ISO 565, EN933-2

### Further Information

**\*\*NOT AVAILABLE FOR SALE IN THE USA\*\***



## 200mm Dia BS Sieve 150 Mic Stainless Steel Mesh.

Code: [79-0120](#)

Product Group: [200mm Diameter BS Sieves](#), [200mm Diameter BS Sieves](#), [200mm Diameter BS Sieves](#)

### Standards

BS 410-1, ISO 3310, ISO 565, EN933-2

### Further Information

**\*\*NOT AVAILABLE FOR SALE IN THE USA\*\***



## 200mm Dia BS Sieve 212Mic Stainless Steel Mesh.

Code: 79-0140

Product Group: 200mm Diameter BS Sieves, 200mm Diameter BS Sieves, 200mm Diameter BS Sieves

### Standards

BS 410-1, ISO 3310, ISO 565, EN933-2

### Further Information

\*\*NOT AVAILABLE FOR SALE IN THE USA\*\*



## 200mm Dia BS Sieve 300Mic Stainless Steel Mesh.

Code: 79-0160

Product Group: 200mm Diameter BS Sieves, 200mm Diameter BS Sieves, 200mm Diameter BS Sieves

### Standards

BS 410-1, ISO 3310, EN933-2, ISO 565

### Further Information

**\*\*NOT AVAILABLE FOR SALE IN THE USA\*\***



## 200mm Dia BS Sieve 425Mic Stainless Steel Mesh.

Code: 79-0180

Product Group: 200mm Diameter BS Sieves, 200mm Diameter BS Sieves, 200mm Diameter BS Sieves

### Standards

BS 410-1, ISO 3310, EN933-2, ISO 565

### Further Information

\*\*NOT AVAILABLE FOR SALE IN THE USA\*\*