



IF IT'S WORTH BUILDING, IT'S WORTH TESTING

This wishlist was generated on 27/07/2017, and contains the following Products:

81-4020

Sample Tray - 306 x 306 x 38 mm

81-0140

Spatula 200 mm

81-0100

Spatula 100 mm

79-3640

450mm Dia BS Sieve 37.5 mm Stainless Steel Sieve. Perforated

79-3595

450mm Dia BS Sieve 20 mm Stainless Steel Sieve. Perforated

79-3515

450mm Dia BS Sieve 5 mm Stainless Steel Sieve. Perforated

79-3180

450mm Dia BS Sieve 425 Mic Stainless Steel Mesh. Fitted with Reinforcing Mesh.

79-3160

450mm Dia BS Sieve 300 Mic Stainless Steel Mesh. Fitted with Reinforcing Mesh.

79-3080

450mm Dia BS Sieve 75 Mic Stainless Steel Mesh. Fitted with Reinforcing Mesh.

79-3020

450mm Dia. Receiver

79-3010

450mm Dia. Lid

79-7200

Sieve Brush Brass and Nylon

82-1840

Measuring Cylinder - Plastic 100 ml

82-1860

Measuring Cylinder - Plastic 250 ml

82-1880

Measuring Cylinder - Plastic 500 ml

82-1900

Measuring Cylinder - Plastic 1000 ml

81-2979

Moisture Content Tin

78-7090

Harvard Trip Balance

78-7110

Weights for Harvard Trip Balance

82-8020/01

Distilled Water Still

81-0588

Vernier Caliper Range 0 to 200mm X 0.02mm.

23-3505

Mortar and Pestle Porcelain.

24-1800

Shrinkage Mould to BS 1377

24-0410

Liquid Limit Device BS with Counter. C/W Metal Grooving Tool & Test Gauge.

24-0430

Glass Plate.

42-0820

Length Gauge

81-5100

Rubber Bucket

82-2500

Wash Bottle

82-5005

Non Hazardous Glass Thermometers -10 - +260°C

82-5274

Thermometer

82-5310

Maximum and Minimum Thermometer

82-5243

Portable Thermometer +50 - +250°C Portable Thermometer +50 - +250°C Portable Thermometer +50 - +250°C

82-5244

Portable Thermometer -30 - +60°C

82-5245

Portable Thermometer 0 - +250°C

81-3040

Sample Container - Tinned Steel 2.5 litres

78-2950/01

Hotplate

34-0192

Slump Test Set BS & ASTM. C/W Slump Cone Base Plate Steel Rule Tamping Rod & Funnel.

34-4570

150mm Cube Mould 4-Part Clamp Type. Cast Iron Construction. BS EN Compliant.

34-6575/01

Large Curing Tank C/W with Circulating Pump Heater/Thermostat Unit and Lower Rack

34-0130

Tamping Rod 16mm Dia X 600mm long hemispherical at both ends.

36-0720/01

ADR Touch 1500 Compression Machine with Digital Readout.

37-5120

EN 12390-3/4 Distance Piece - 50 mm Depth

37-5170

EN 12390-3/4 Distance Piece - 80 mm Depth

24-4919

Sand Equivalent Apparatus ASTM Aashto with Carrying Case.

24-4925

5 Litre Syphon Assembly with Connection for 5mm Id Tubing.

24-4930

Calcium Chloride 2.5Kg.

24-4932

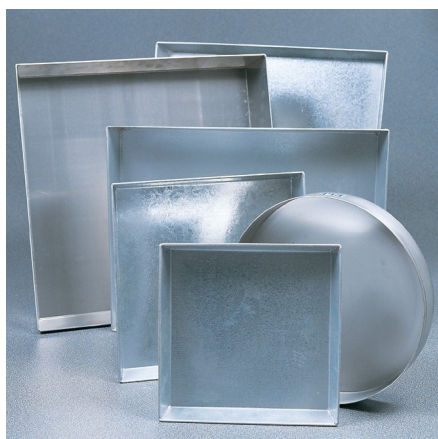
Formaldehyde 40% Aqueous Solution 2.5 Litre.

24-4934

Glycerol Analar 2.5 Litre

82-0140

Beaker - 250 ml



Sample Tray - 306 x 306 x 38 mm

Code: [81-4020](#)

Product Group: [Sample Trays](#)

Further Information

****NOT AVAILABLE FOR SALE IN THE USA****



Spatula 200 mm

Code: [81-0140](#)

Product Group: [Determination of Plastic Limit, Spatulas](#)

Further Information

****NOT AVAILABLE FOR SALE IN THE USA****

Accessories



Vibrating Hammer

Code: [47-0455/01](#)

Alternatives



Vibrating Hammer

Code: [47-0455/01](#)



Spatula 100 mm

Code: [81-0100](#)

Product Group: [Spatulas](#)

Further Information

****NOT AVAILABLE FOR SALE IN THE USA****



450mm Dia BS Sieve 37.5 mm Stainless Steel Sieve. Perforated

Code: [79-3640](#)

Product Group: [450mm Diameter BS Sieves](#)

Further Information

****NOT AVAILABLE FOR SALE IN THE USA****



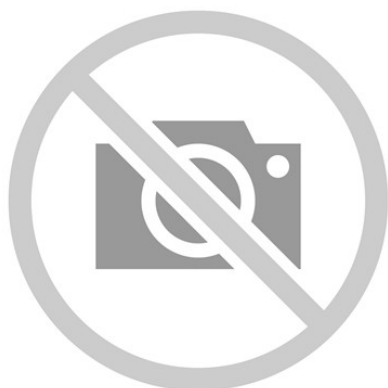
450mm Dia BS Sieve 20 mm Stainless Steel Sieve. Perforated

Code: [79-3595](#)

Product Group: [450mm Diameter BS Sieves](#)

Further Information

****NOT AVAILABLE FOR SALE IN THE USA****



450mm Dia BS Sieve 5 mm Stainless Steel Sieve. Perforated

Code: [79-3515](#)

Product Group: [450mm Diameter BS Sieves](#)

Further Information

****NOT AVAILABLE FOR SALE IN THE USA****



450mm Dia BS Sieve 425 Mic Stainless Steel Mesh. Fitted with Reinforcing Mesh.

Code: [79-3180](#)

Product Group: [450mm Diameter BS Sieves](#)

Further Information

****NOT AVAILABLE FOR SALE IN THE USA****



450mm Dia BS Sieve 300 Mic Stainless Steel Mesh. Fitted with Reinforcing Mesh.

Code: [79-3160](#)

Product Group: [450mm Diameter BS Sieves](#)

Further Information

****NOT AVAILABLE FOR SALE IN THE USA****



450mm Dia BS Sieve 75 Mic Stainless Steel Mesh. Fitted with Reinforcing Mesh.

Code: [79-3080](#)

Product Group: [450mm Diameter BS Sieves](#)

Further Information

****NOT AVAILABLE FOR SALE IN THE USA****



450mm Dia. Receiver

Code: [79-3020](#)

Product Group: [450mm Diameter BS Sieves](#)

Further Information

****NOT AVAILABLE FOR SALE IN THE USA****



450mm Dia. Lid

Code: [79-3010](#)

Product Group: [450mm Diameter BS Sieves](#)

Further Information

****NOT AVAILABLE FOR SALE IN THE USA****



Sieve Brush Brass and Nylon

Code: [79-7200](#)

Product Group: [Sieve Brushes](#)

Double-ended, brass and nylon bristle

Standards

ASTM E11

Further Information

****NOT AVAILABLE FOR SALE IN THE USA****



Measuring Cylinder - Plastic 100 ml

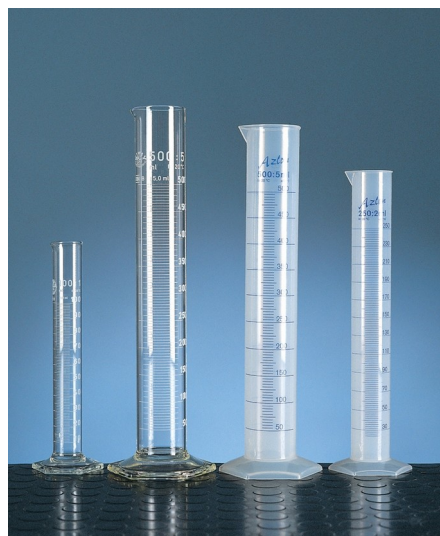
Code: [82-1840](#)

Product Group: [Measuring Cylinders, BS](#)

Plastic with spout, graduated to BS 5404.

Further Information

****NOT AVAILABLE FOR SALE IN THE USA****



Measuring Cylinder - Plastic 250 ml

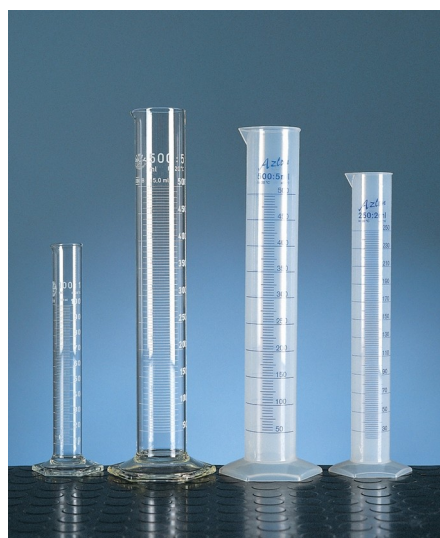
Code: [82-1860](#)

Product Group: [Measuring Cylinders, BS](#)

Plastic with spout, graduated to BS 5404.

Further Information

****NOT AVAILABLE FOR SALE IN THE USA****



Measuring Cylinder - Plastic 500 ml

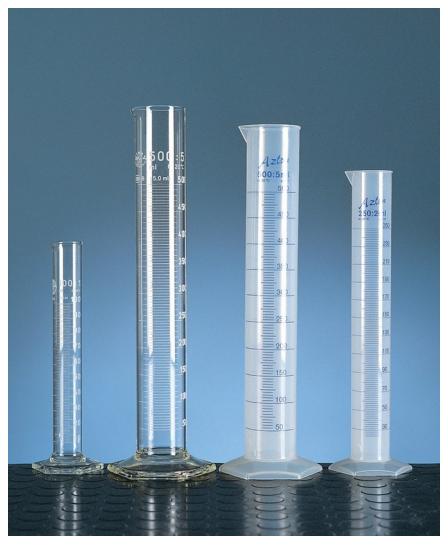
Code: [82-1880](#)

Product Group: [Measuring Cylinders, BS](#)

Plastic with spout, graduated to BS 5404.

Further Information

****NOT AVAILABLE FOR SALE IN THE USA****



Measuring Cylinder - Plastic 1000 ml

Code: [82-1900](#)

Product Group: [Measuring Cylinders, BS](#)

Plastic with spout, graduated to BS 5404.

Further Information

****NOT AVAILABLE FOR SALE IN THE USA****



Moisture Content Tin

Code: [81-2979](#)

Product Group: [Moisture Content Tin and Sample Containers](#)

Further Information

****NOT AVAILABLE FOR SALE IN THE USA****



Harvard Trip Balance

Code: 78-7090

Product Group: Mechanical Balances, Harvard
Mechanical Trip Balance

Further Information

****Not available for sale in the USA****

Specification

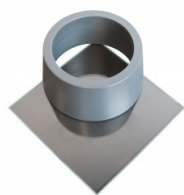
Capacity	2000 g
Resolution	0.1 g
Pan size (diameter)	2 x 150 mm
Overall dimensions (l x w x h)	152 x 356 x 254 mm
Weight	2.7 kg

Accessories

ASTM Initial Set Needle

Code: 38-2620





ASTM Vicat Mould

Code: [38-2660](#)



EN Initial and Final Set Needle

Code: [38-2110](#)



Plastic Scoop and Counterweight

Code: [78-7130](#)



Triple Beam Balance

Code: [78-7140](#)



Weights for Harvard Trip Balance

Code: [78-7110](#)

Spares/Consumables



Consistency Plunger

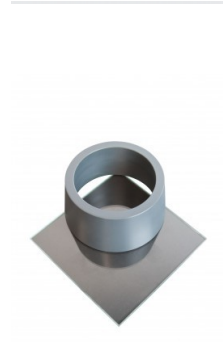
Code: [38-2010/10](#)

Alternatives



ASTM Initial Set Needle

Code: [38-2620](#)



ASTM Vicat Mould

Code: [38-2660](#)



EN Initial and Final Set Needle

Code: [38-2110](#)



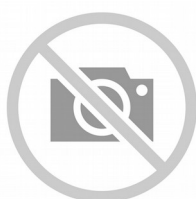
Plastic Scoop and Counterweight

Code: [78-7130](#)



Triple Beam Balance

Code: [78-7140](#)



Weights for Harvard Trip Balance

Code: [78-7110](#)



Weights for Harvard Trip Balance

Code: [78-7110](#)

Product Group: [Mechanical Balances, Harvard Mechanical Trip Balance](#)

Standards

ASTM class 6

Further Information

****Not available for sale in the USA****

Accessories

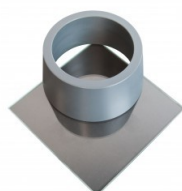
ASTM Initial Set Needle

Code: [38-2620](#)



ASTM Vicat Mould

Code: [38-2660](#)



EN Initial and Final Set Needle

Code: [38-2110](#)



Harvard Trip Balance

Code: [78-7090](#)

Spares/Consumables

Consistency Plunger

Code: [38-2010/10](#)

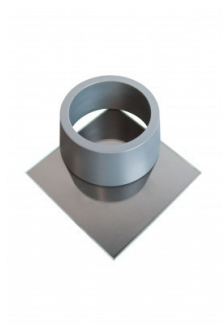


Alternatives

ASTM Initial Set Needle

Code: [38-2620](#)





ASTM Vicat Mould

Code: [38-2660](#)



EN Initial and Final Set Needle

Code: [38-2110](#)



Harvard Trip Balance

Code: [78-7090](#)



Distilled Water Still

Code: [82-8020/01](#)

Product Group: [Distilled Water Still](#)

Further Information

****NOT AVAILABLE FOR SALE IN THE USA****

Specification

Dimensions (l x w x h)	590 x 530 x 940 mm
Boiling chamber	Glass
Condenser	Borosilicate glass
Output	3.5 litres/hr when permanently connected to water supply
Electrical supply	220 – 240 V AC, 50 - 60 Hz, 1 ph
Rated power	2.75 kW
Weight	12 kg



Vernier Caliper Range 0 to 200mm X 0.02mm.

Code: [81-0588](#)

Product Group: [Determination of the Shape Index, Linear Shrinkage, Miscellaneous Laboratory Hardware](#)

Vernier callipers 200 x 0.002mm. Graduated in mm and inches.

Gives four types of readings: inside, outside, depth and step. Dual reading scale (metric and inch) with 14° bevelled vernier scale for reduced parallax reading error and knurled locking nut. Manufactured from hardened stainless steel for rigidity. Satin finish.

Conforms to DIN 862.

Standards

EN 933-4, BS 1377



Mortar and Pestle Porcelain.

Code: [23-3505](#)

Product Group: [Sample Reduction](#)

Thick walled porcelain mortar; 107mm internal diameter and porcelain pestle.

Alternatives



Heat of Hydration Apparatus

Code: [38-4600/06](#)



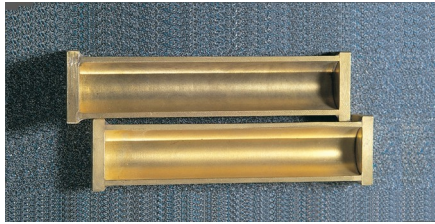
Heat of Hydration Apparatus

Code: [38-4600/01](#)



Rubber Headed Pestle.

Code: [23-3500](#)



Shrinkage Mould to BS 1377

Code: [24-1800](#)

Product Group: [Linear Shrinkage](#)

To produce a specimen 140 mm long x 12.5 mm radius.

Standards

BS 1377

Accessories



Vernier Caliper Range 0 to 200mm X 0.02mm.

Code: [81-0588](#)



Liquid Limit Device BS with Counter. C/W Metal Grooving Tool & Test Gauge.

Code: [24-0410](#)

Product Group: [Casagrande Method](#)

With revolution counter. Complete with metal grooving tool and test gauge.

Standards

BS 1377-2

Accessories



Glass Plate.

Code: [24-0430](#)



Grooving Tool and Gauge B.S.

Code: [24-0425](#)

Alternatives



Motorised Liquid Limit Device W/ Counter BS 220-240V 50Hz 1Ph.

Code: [24-0417/01](#)



Glass Plate.

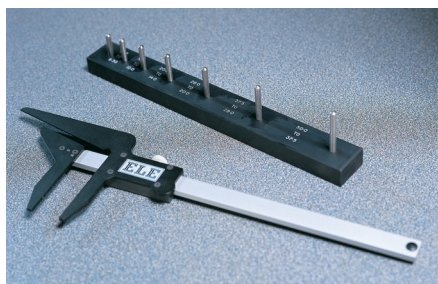
Code: [24-0430](#)

Product Group: [Casagrande Method, Determination of Plastic Limit](#)

500 mm square x 10 mm thick.

Standards

BS 1377-2



Length Gauge

Code: [42-0820](#)

Product Group: [Elongation Index](#)

Manufactured to the dimensions specified in BS 182.

Standards

BS 812-105

Further Information

****NOT AVAILABLE FOR SALE IN THE USA****

Accessories



300mm Dia BS Sieve 10.0mm Perforated Plate.

Code: [79-2555](#)



300mm Dia BS Sieve 14.0mm Perforated Plate.

Code: [79-2575](#)



300mm Dia BS Sieve 20.0mm Perforated Plate.

Code: [79-2595](#)



300mm Dia BS Sieve 28.0mm Perforated Plate.

Code: [79-2615](#)



300mm Dia BS Sieve 37.5mm Perforated Plate.

Code: [79-2640](#)



300mm Dia BS Sieve 45.0mm Perforated Plate

Code: [79-2650](#)



300mm Dia BS Sieve 5.60mm Perforated Plate.

Code: [79-2520](#)



300mm Dia BS Sieve 50.0mm Perforated Plate.

Code: [79-2655](#)



300mm Dia BS Sieve 6.30mm Perforated Plate.

Code: [79-2525](#)



300mm Dia BS Sieve 63.0mm Perforated Plate.

Code: [79-2670](#)



300mm Dia Lid.

Code: 79-2010



300mm Dia Receiver.

Code: 79-2020



Air Jet Sieving Machine

Code: 80-0300/09



ELE Sieve Shaker

Code: 80-0200/06



ELE Sieve Shaker

Code: 80-0200/01



Sample Tray - 1200 x 1160 x 50 mm

Code: [81-4230](#)



Sample Tray - 406 x 406 x 50 mm

Code: [81-4030](#)



Shovel - With flat blade

Code: [81-0240](#)

Alternatives



Flakiness Gauge.

Code: [42-0410](#)



Set of Flakiness Sieves Comprising 1 Ea 4.9mm 7.2mm 10.2mm 14.4mm 19.7mm 26.3mm and 33.9mm

Code: [42-0600](#)



Rubber Bucket

Code: [81-5100](#)

Product Group: [Miscellaneous Laboratory Hardware](#)

Further Information

****NOT AVAILABLE FOR SALE IN THE USA****



Wash Bottle

Code: [82-2500](#)

Product Group: [Bottles and Crucibles](#)

Polythene, 500 ml capacity.

Further Information

****NOT AVAILABLE FOR SALE IN THE USA****



Non Hazardous Glass Thermometers -10 - +260°C

Code: [82-5005](#)

Product Group: [Non Hazardous Glass Thermometers](#)

1.0°C divisions + 76 mm immersion

Further Information

****NOT AVAILABLE FOR SALE IN THE USA****



Thermometer

Code: [82-5274](#)

Product Group: [Ring and Ball Apparatus, Non Hazardous Glass Thermometers](#)

Mercury-free with a range of -10.0°C to $+210.0^{\circ}\text{C}$ and graduated every 1°C . Total immersion possible.

Standards

EN 1427, BS 2000-58

Further Information

****NOT AVAILABLE FOR SALE IN THE USA****



Maximum and Minimum Thermometer

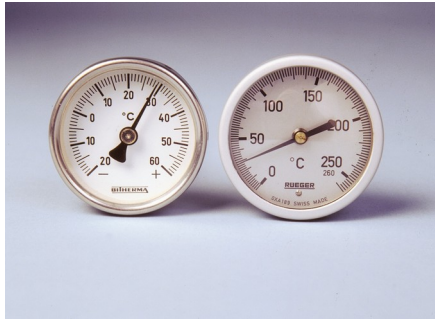
Code: [82-5310](#)

Product Group: [General-purpose Thermometers](#)

Non hazardous. Range -40 - +50°C

Further Information

****NOT AVAILABLE FOR SALE IN THE USA****



**Portable Thermometer +50 -
+250°C**
**Portable Thermometer +50 -
+250°C**
**Portable Thermometer +50 -
+250°C**

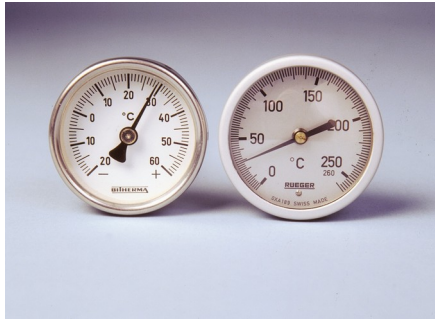
Code: [82-5243](#)

Product Group: [Portable Dial-type Thermometers](#)

64 mm diameter dial with a 650 mm long stem.

Further Information

****NOT AVAILABLE FOR SALE IN THE USA****



Portable Thermometer -30 - +60°C

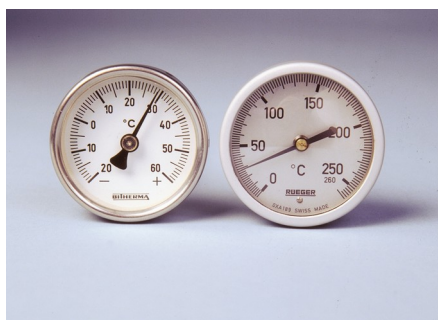
Code: [82-5244](#)

Product Group: [Portable Dial-type Thermometers](#)

25 mm diameter dial with a 90 mm long stem and protective sheath.

Further Information

****NOT AVAILABLE FOR SALE IN THE USA****



Portable Thermometer 0 - +250°C

Code: [82-5245](#)

Product Group: [Portable Dial-type Thermometers](#)

25 mm diameter dial with a 100 mm long stem and protective sheath.

Further Information

****NOT AVAILABLE FOR SALE IN THE USA****



Sample Container - Tinned Steel 2.5 litres

Code: [81-3040](#)

Product Group: [Moisture Content Tin and Sample Containers](#)

Further Information

****NOT AVAILABLE FOR SALE IN THE USA****



Hotplate

Code: [78-2950/01](#)

Product Group: [Hotplate](#)

Further Information

****Not available for sale in the USA****

Specification

Construction	Cast-iron top and base ventilated sheet-steel body
Nominal diameter	200 mm
Maximum temperature	500°C
Rated power	2000 W
Weight	5 kg



Slump Test Set BS & ASTM. C/W Slump Cone Base Plate Steel Rule Tamping Rod & Funnel.

Code: [34-0192](#)

Product Group: [Slump Test](#)

BS and ASTM comprising of slump cone, base plate, steel rule, tamping rod and funnel.

Further Information

****NOT AVAILABLE FOR SALE IN THE USA****

Accessories



Sample Tray - 1200 x 1160 x 50 mm

Code: [81-4230](#)



Shovel - With flat blade

Code: [81-0240](#)

Spares/Consumables



Stopwatch

Code: [81-0521](#)



150mm Cube Mould 4-Part Clamp Type. Cast Iron Construction. BS EN Compliant.

Code: [34-4570](#)

Product Group: [Cube Moulds, Cube Moulds](#)

4-part with clamp attached base plate.

Standards

BS 1881-108, EN 12390-1, EN 12390-2

Specification

Construction	Bolted sides and clamped base plate
Finish	Painted
Weight	42 lb (19.1 kg)

Accessories



Aluminium Scoop Large

Code: [81-0220](#)



Compacting Bar 25mm Sq X 380mm

Code: [34-2910](#)



Float - Plasterer's type

Code: [81-0340](#)



Mould Oil (25 Litre Drum)

Code: [82-7341](#)



Wire Brush

Code: [81-0705](#)

Spares/Consumables



Soft Headed Mallet.

Code: [29-5020](#)

Alternatives



Vibrating Table 600 X 400mm Table Top. 220-240V 50Hz 1Ph. Supplied with clamping assembly

Code: [34-6250/01](#)



Large Curing Tank C/W with Circulating Pump Heater/Thermostat Unit and Lower Rack

Code: [34-6575/01](#)

Product Group: [Expansion \(swell\) Test Equipment, Large Curing Tank](#)

This Large Curing Tank is supplied complete with a submersible pump, immersion heater/thermostat unit and separate control panel. The tank includes a lower rack as standard and is designed to maintain the temperature at $20 \pm 2^{\circ}\text{C}$, providing that the ambient temperature does not fall below 15°C or rise above 20°C .

Standards

EN 12390-2, ASTM C31, AASHTO T23

Further Information

****NOT AVAILABLE FOR SALE IN THE USA****

Supplied as specified. For 220 - 240 V AC, 50 - 60 Hz, 1 ph.

Specification

Internal Dimensions	1040 x 1040 x 605 mm (l x w x h)
Capacity	650 litres
Rated Power	2000 watt
Weight	60 kg

Accessories



Maximum and Minimum Thermometer

Code: [82-5310](#)

Alternatives



Jolting Table 220 - 240 V AC 60 Hz

Code: [39-1150/06](#)



Tamping Rod 16mm Dia X 600mm long hemispherical at both ends.

Code: [34-0130](#)

Product Group: [Precision Air Entrainment Meter, Slump Test, Accessories for Concrete Moulds](#)

Steel, 600 mm long x 16 mm dia, hemispherical at both ends.

Please note this item is not graduated.

Further Information

****NOT AVAILABLE FOR SALE IN THE USA****



ADR Touch 1500 Compression Machine with Digital Readout.

Code: 36-0720/01

Product Group: General Purpose Compression Machines

- 1560 kN/350 000 lbf capacity
- Calibration accuracy to BS EN ISO 7500-1; ASTM E4;
- Efficient hydraulic power packs
- Economic machines ideal for site use

The Compact 1500 range of compression machines has been designed to meet the need for a simple, economic and reliable means of testing concrete.

SPECIMEN CAPACITY

The dimensions of the frame allow the testing of cylinders up to 320 mm long x 160 mm diameter, and cubes 150 or 100 mm square. Kerbs and flagstones may also be tested on the ADR machine as well as 150 mm and 100 mm square section beams to ASTM C78, using the optional 100 kN flexural frames which are connected to the power pack.

LOAD INDICATION

The ADR digital readout is a microprocessor controlled instrument, which is fitted as standard to all digital machines in the range. Load can be displayed in kN, lbf or kgf as selected by the operator.

Standards

BS EN ISO 7500-1, ASTM E4

Further Information

****NOT AVAILABLE FOR SALE IN THE USA****

The Standard range of compression machines has been designed to meet the need for a simple, economic and reliable means of testing concrete.

Whilst delivering all the features and reputation of the established ADR Series with its extensive design history, the new and improved user interface provides a high quality platform for testing that enhances the performance of ELE's compression machines.

New, sophisticated electronics further the benefits of simplified operation, whilst delivering the highest levels of accuracy in testing concrete and cement/mortar samples, satisfying the needs of Quality Control Managers, Lab Managers and Technicians.

ACCURACY & SAVINGS

The new ADR Touch Series, with 145mm (5.7") high resolution QVGA touch screen interface and intuitive menu-driven operation, reduces the time taken to set up the machine and perform tests, reducing the time to train staff by up to 25%.

- Up to 6 sample types can be set as favorites, enabling one-touch set up for repeat testing.

- Full, QWERTY touch pad for input of test data.

Most testing errors produce lower strength results. Noncompliant loading rates can generate errors in measured strength. The user interface includes real-time display of load vs. time, further ensuring accurate and consistent test results and providing "goodness of test" data to improve traceability in your QC operations.

TRACEABILITY & DATA QUALITY

The ADR range now provides improved data quality and traceability in due diligence cases - it is now possible to demonstrate traceability all the way from the machine/user to the accreditation body, increasing your reputation and peace of mind - all test results now come complete with the machine serial number attached.

- Enhanced USB data communications between PC and machine - eliminating the need for download software.
- Two gigabytes of storage memory.
- Full customization of sample sizes - stress calculations are automatically recalculated.

USER SAFETY

With full safety gates as standard, total systems diagnostics, ram run-out switches and overload warnings ensure the safety of your employees and the reliability of your machine.

Specification

Testing Standards	BS EN ISO 7500-1, ASTM E4
Capacity	1500 kN
Cubes (Concrete)	Up to 150 mm
Cylinders (Concrete)	Up to 160 x 320 mm
Blocks	n/a
Flexural Testing	Via Flexural Frame
TFV and ACV	Yes
Voltage Supply	220-240V 50/60 Hz 1Ph.
Frame Type	Welded
Max vert. Clearance	340 mm
Max hor. Clearance	325 mm
Platen Sizes	Lower, Upper 222 mm
Max Ram Travel	50 mm

Accessories



100kN Flexural Fitting Kit (ADR) Used for Connecting Flexural Frames to ADR Compression Machines.

Code: [37-6138](#)



2000 kN Capacity Calibration Load Cell with Hand-Held Readout

Code: [37-8315](#)



ADR Touch Head for Compression machines

Code: [37-4950/09](#)



Impact Printer Rs232 Serial Connection. Supplied Complete with 1 Paper Roll.

Code: [37-4859/01](#)



Standard Distance Piece - 100 mm Depth

Code: [37-5100](#)



Standard Distance Piece - 20 mm Depth

Code: [37-4980](#)



Standard Distance Piece - 50 mm Depth

Code: [37-5000](#)



Standard Distance Piece - 60 mm Depth

Code: [37-5020](#)



Standard Distance Piece - 80 mm Depth

Code: [37-5050](#)

Spares/Consumables



Pressure transducer, 0-700bar, 0.05 to 10v DC Output

Code: [6014A0062](#)

Alternatives



ADR Touch 2000 Standard Compression Machine with Digital Readout.

Code: [36-3090/01](#)



EN 12390-3/4 Distance Piece - 50 mm Depth

Code: [37-5120](#)

Product Group: [Distance Pieces](#)

Standards

EN 12390-3, BS 1881-115

Further Information

****Not available for sale in the USA****



EN 12390-3/4 Distance Piece - 80 mm Depth

Code: [37-5170](#)

Product Group: [Distance Pieces](#)

Standards

EN 12390-3, BS 1881-115

Further Information

****Not available for sale in the USA****



Sand Equivalent Apparatus ASTM Aashto with Carrying Case.

Code: [24-4919](#)

Product Group: [Sand Equivalent Value](#), [Sand Equivalent Value](#)

Set Includes:

- 4 Plastic measuring cylinders
- 1 Carrying case
- 1 Weighted foot assembly
- 1 Irrigator tube
- 1 Rubber tubing complete with pinch clip
- 1 Funnel.

Standards

ASTM D2419, AASHTO T176

Accessories



5 Litre Syphon Assembly with Connection for 5mm Id Tubing.

Code: [24-4925](#)



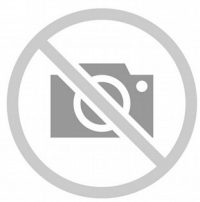
Calcium Chloride 2.5Kg.

Code: [24-4930](#)



Formaldehyde 40% Aqueous Solution 2.5 Litre.

Code: [24-4932](#)



Glycerol Analar 2.5 Litre

Code: [24-4934](#)



5 Litre Syphon Assembly with Connection for 5mm Id Tubing.

Code: [24-4925](#)

Product Group: [Sand Equivalent Value](#), [Sand Equivalent Value](#)

With 5 litre polythene bottle. Supplied without rubber tubing.

Standards

ASTM D2419, AASHTO T176

Further Information

****NOT AVAILABLE FOR SALE IN THE USA****



Calcium Chloride 2.5Kg.

Code: 24-4930

Product Group: Sand Equivalent Value, Sand
Equivalent Value

Standards

ASTM D2419, AASHTO T176

Further Information

NOT AVAILABLE FOR SALE IN THE USA



Formaldehyde 40% Aqueous Solution 2.5 Litre.

Code: [24-4932](#)

Product Group: [Sand Equivalent Value](#), [Sand Equivalent Value](#)

40% solution

Standards

ASTM D2419, AASHTO T176

Further Information

****NOT AVAILABLE FOR SALE IN THE USA****



Glycerol Analar 2.5 Litre

Code: [24-4934](#)

Product Group: [Sand Equivalent Value, Sand Equivalent Value](#)

2.5 litres

Standards

ASTM D2419, AASHTO T176

Further Information

****NOT AVAILABLE FOR SALE IN THE USA****



Beaker - 250 ml

Code: [82-0140](#)

Product Group: [Beakers and Covers](#)

Borosilicate glass, squat form.

Further Information

****NOT AVAILABLE FOR SALE IN THE USA****