



IF IT'S WORTH BUILDING, IT'S WORTH TESTING

Contents

www.ele.com
+44 (0) 01525 249 200



This wishlist was generated on 11/08/2017, and contains the following Products:

514-440

Double Ring Infiltrrometer Kit.

514-020

Dial-type soil moisture gauge tensiometer 300 mm

514-034

Service Kit

514-035

Jet Fill tensiometer 150 mm

514-010

Quickdraw soil moisture probe 305 mm



Double Ring Infiltrometer Kit.

Code: [514-440](#)

Product Group: [Permeability](#)

Used for the determination of infiltration capacity above the water table.

Allows synchronous determination of infiltration capacity in triplicate.

A comprehensive kit for the determination of soil infiltration capacity above the water table. The components are manufactured from high-quality materials for exhaustive field use.

514-440 kit comprises;

3 x double ring infiltrimeters:

1x inner ring 280 mm, outer ring 530 mm diameter

1x inner ring 300 mm, outer ring 550 mm diameter

1x inner ring 320 mm, outer ring 570 mm diameter

Driving plate with handle for inner and outer rings

3 x adjustable measuring bridges

3 x floats with measuring rods

1 x nylon headed hammer

1 x stop watch, 0-30 sec x 0.1 sec accuracy

Specification

Maximum measuring depth	0 cm
Measured parameters	infiltration ratio
Reading accuracy	1 mm
Registration type	manual
Package size	65 x 65 x 50 cm
Weight	50 kg

Accessories

Product Sheet

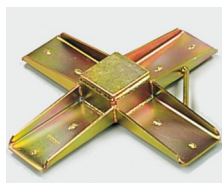
www.ele.com
+44 (0) 01525 249 200



Club hammer

Code: 29-5040

Spares/Consumables



Driving Plate

Code: 514-446



Soft Headed Mallet.

Code: 29-5020



Stopwatch

Code: 81-0521

Alternatives



Double Ring Infiltrometer

Code: 25-0660



Dial-type soil moisture gauge tensiometer 300 mm

Code: [514-020](#)

Product Group: [Tensiometers](#)

Durable weather and soil resistant tensiometer.

Designed for permanent installation.

Rapid response.

Accurate yet inexpensive, this tensiometer is ideal for long term deployment in both field and greenhouse environments. The tensiometer is easy to install via the use of the custom insertion tool (514-030), and maintain, with a full range of spares available. Rapid response is ensured by the sensitive 0-100 centibar dial gauge, having a re-calibration facility. For convenience, a range of lengths are available for monitoring at variable depths.

Note: For operating these tensiometers, a service kit (514-034) is required.

The insertion tool (514-030) is used to provide a clearance hole and also to maintain existing hole diameter for the tensiometer.

Further Information

Requires Part 514-034 Service kit

Accessories



Insertion Tool

Code: [514-030](#)



Service Kit

Code: [514-034](#)

Spares/Consumables



Screw-top porous ceramic cup

Code: [514-020/11](#)



Vacuum dial gauge

Code: [514-020/13](#)

Alternatives



Dial-Type Gauge Tensiometer 450 mm

Code: [514-021](#)



Dial-Type Gauge Tensiometer 600 mm

Code: [514-022](#)



Dial-Type Gauge Tensiometer 900 mm

Code: [514-024](#)



Service Kit

Code: [514-034](#)

Product Group: [Tensiometers](#)

This kit is designed to service and maintain soilmoisture tensiometers.

Kit includes a Vacuum Hand Pump, 455 ml natural colour plastic bottle, rubber washer, 3 mm O.D. nylon tubing, spout/cap assembly, herbicide/algaeicide additive and 12 monthly chart forms.

Specification

Weight

0.77 kgs

Dimensions

33 x 33 x 17 cms



Jet Fill tensiometer 150 mm

Code: [514-035](#)

Product Group: [Tensiometers](#)

- Advanced, sensitive tensiometer.
- Patented Jet-fill system.
- High accuracy.
- Fast response.
- 6 length options available.

The most advanced and sensitive instrument available for the field measurement of soil moisture. The Jet-fill range includes patented features for superior accuracy and even faster response time whilst retaining the ease of use, maintenance and durability of its counterparts.

At the push of a button, the Jet-fill action releases water into the tensiometer body with no disturbance of the surrounding soil. The large volume, detachable water reservoir enables the unit to be left in place for several months. The recalibrator-style gauge permits zero-point adjustments for research applications.

Further Information

Requires part [514-034](#) service kit

Accessories



Insertion Tool

Code: [514-030](#)



Service Kit

Code: [514-034](#)



Tensiometer Extension Tube

Code: [514-042](#)

Alternatives



Jet Fill tensiometer 1220 mm

Code: [514-041](#)



Jet Fill tensiometer 300 mm

Code: [514-036](#)



Jet Fill tensiometer 460 mm

Code: [514-037](#)



Jet Fill tensiometer 600 mm

Code: [514-038](#)



Jet Fill tensiometer 900 mm

Code: [514-040](#)



Quickdraw soil moisture probe 305 mm

Code: [514-010](#)

Product Group: [Tensiometers](#)

The world's only portable, fast reading tensiometer.

Accurately measures soil water tension.

Supplied with coring tool and carrying case.

2 sizes available.

The Quickdraw soil moisture probe is an accurate, portable, inexpensive means for measuring the moisture available in the soil for plant uptake. The Quickdraw probe is ready for immediate use and requires no adjustment or calibration. No batteries are required and its ease of maintenance means that these tensiometers give years of continuous, trouble free service. Used extensively and accepted enthusiastically by farmers, growers, groundsmen and agronomists, world-wide.

The coring tool is first used to core an access hole to the desired depth of measurement. The tensiometer is then inserted into the access hole and the ceramic sensing tip is placed in contact with the soil. The Null knob can be used to reach equilibrium and provide a measurement more rapidly.

Spares/Consumables



Replacement Dial Gauge.

Code: [514-010/12](#)

Alternatives



Quickdraw soil moisture probe 460 mm

Code: [514-012](#)