



IF IT'S WORTH BUILDING, IT'S WORTH TESTING

This wishlist was generated on 18/08/2017, and contains the following Products:

80-0200/06

ELE Sieve Shaker

42-5310/06

**Los Angeles Abrasion Machine with CE Safety Cabinet W/ Microswitches.
220-240V 60Hz 1Ph.**

2103/02

DataSystem Direct/Residual Shear Test Set 110vAC Metric

2230/02

DataSystem Consolidation Test Set 110 vAC

39-0035/01

Automatic/Manual 5 litre nominal capacity Mortar Mixer

42-6000

Pendulum Skid Resistance Tester

38-2015/01

Automatic Vicat Apparatus

37-8310

300 kN Load Calibration Device

37-8315

2000 kN Capacity Calibration Load Cell with Hand-Held Readout

42-0410

Flakiness Gauge.



ELE Sieve Shaker

Code: [80-0200/06](#)

Product Group: [ELE Sieve Shaker](#)

The ELE sieve shaker is powered by an electromagnetic drive that has no rotating parts to wear making it maintenance free and extremely quiet in operation.

The unit features a triple Vertical-Lateral-Rotary vibrating action that moves the sample over the sieve producing faster more efficient sieving, while the rapid vertical movements also help keep the apertures from blinding.

The shaker is ideal for laboratory or on site use. It is robust, compact and sufficiently lightweight to be portable. The separate digital microprocessor controlled console unit incorporates a keypad for setting the sieving program and is isolated from any effects of vibration from the shaker.

As standard the shaker includes, timer 0-999 minutes, adjustable vibration intensity and adjustable intermittent or continuous operation.

The unit accepts up to ten 200 mm or 8 inch, full height, diameter sieves and lid and receiver, or up to six 300 mm or 12 inch diameter sieves and lid and receiver. Complete as specified. Dimensions (l x w x h) 380 x 440 x 1085 mm. For 220 - 240 V AC, 60 Hz 1ph.



Los Angeles Abrasion Machine with CE Safety Cabinet W/ Microswitches. 220-240V 60Hz 1Ph.

Code: [42-5310/06](#)

Product Group: [Los Angeles Abrasion Machine](#)

The machine consists of a closed hollow cylindrical steel drum rotating around its horizontal axis on ball bearing units mounted on a sturdy base framework. Also the full enclosure ensures noise is minimized.

The drum is driven at a speed of between 30 - 33 rpm via an enclosed belt drive arrangement from an electric motor/gearbox unit situated on the base frame. Inside the drum a full length steel shelf is attached, accessed by a dust-proof opening.

The cylinder incorporates a removable internal shelf, one shelf position is provided to meet the requirements of both the ASTM and EN test standards.

Controls are located easily on the right-hand side of the machine at convenient operator height.

Start and stop push buttons and a subtracting revolution counter allows the user to preset the number of revolutions before an automatic stop.

Further Information

****NOT AVAILABLE FOR SALE IN THE USA****

Specification

Description	Los Angeles Abrasion Machine with CE Safety Cabinet 220 - 240 V 60Hz
Power Supply	220 - 240 V AC, 60 Hz, 1 ph
EN 1097-2	Yes
ASTM C131	Yes
ASTM C535	Yes
NF P18-573	Yes

Accessories

Set of 12 Abrasive Charges (ASTM).

Code: [42-5300/10](#)



Set of 12 Abrasive Charges EN)

Code: [42-5305/10](#)



Alternatives



Los Angeles Abrasion Machine Meets ASTM and European Standards. 220-240V 50Hz 1Ph.

Code: [42-5305/01](#)



DataSystem Direct/Residual Shear Test Set 110vAC Metric

Code: [2103/02](#)

Product Group: [DataSystem Direct/Residual Shear Test Set](#)

Set includes:

- 1 Direct/Residual Shear Apparatus (26-2114/0x).
- 1 2.5" diam. or 60 mm square Shear Box (26-2213 or 26-2181).
- 1 2.5" diam. or 60 mm square Specimen Cutter (26-2217 or 26-2185).
- 1 2.5" dia. or 60 mm square Specimen Extrusion Tool (26-2189 or 26-2221).
- 1 GDU 8-Channel Geotechnical Data Unit (27-1500/0x).
- 1 Direct/Residual Shear Software (27-1790).
- 1 Vertical Displacement Transducer (27-1689).
- 1 Horizontal Displacement Transducer (27-1697).
- 1 2,000 lb. (8.9 kN) S-Type Load Cell (27-1583).
- 1 Weight Set (25-0535).

Standards

ASTM D3080, AASHTO T236

Further Information

110vAC, 50/60 Hz, 1Ø. Metric.

Alternatives



DataSystem Direct/Residual Shear Test Set 110vAC English

Code: [2102/02](#)



DataSystem Direct/Residual Shear Test Set 220 vAC Metric

Code: [2103/01](#)



DataSystem Direct/Residual Shear Test Set 220vAC English

Code: [2102/01](#)



DataSystem Consolidation Test Set 110 vAC

Code: [2230/02](#)

Product Group: [DataSystem Consolidation Test Set](#)

Set includes:

- 1 Table Top Consolidation Apparatus (25-0402).
- 1 Fixed Ring Consolidometer, 2.5" (25-0479).
- 1 Weight Set (25-0535).
- 1 Floor Mounting Stand (25-0429).
- 1 GDU 8-Channel Geotechnical Data Unit (27-1500/02).
- 1 Consolidation Displacement Transducer (27-1649).
- 1 One Dimensional Consolidation Program (27-1770).

Standards

ASTM D2435, ASTM D4546, AASHTO T216

Further Information

110vAC, 50/60 Hz, 1Ø.

Alternatives



DataSystem Consolidation Test Set 220 vAC

Code: [2230/01](#)



Automatic/Manual 5 litre nominal capacity Mortar Mixer

Code: 39-0035/01

Product Group: Automatic/Manual 5 Litre Nominal Capacity Mortar Mixer

- New Microprocessor control
- New mix program selector
- Complies with latest EN Standards update
- Choice of automatic mixing cycles
- Sand and water dispenser supplied as standard

This mixer is designed to mix mortars and cement pastes to the requirements of the above Standards. The mixing paddle has a planetary motion and is driven by a motor with a microprocessor based speed and program controller. The mixer can be operated either in an automatic or manual mode. When the mixer is used in the manual mode, the two mixing speeds can be changed by means of a rocker switch, without switching off the motor. In the automatic mode any one of the preset mixing programs may be selected.

Standards

EN 196-1, EN 196-3, EN 413-2, EN 459-2, EN 1744-1, EN 13279-2, EN 1015-2, EN 13395-1, EN 13454-2, ISO 679, BS 3892-1, BS 3892-3, BS 6463-103, BS 4551-1

Further Information

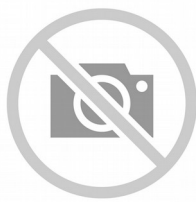
****NOT AVAILABLE FOR SALE IN THE USA****

Complete with bowl and paddle, sand and Water dispensers. For 220 - 240 V AC, 50 - 60 Hz, 1 ph.

Specification

Dimensions (l x w x h)	530 x 350 x 580 mm
Speeds (rpm) Low, High	Paddle: 140 ± 5, 285 ± 10 Mixing Head: 62 ± 5, 125 ± 10
Rated Power	180 W
Bowl Capacity	5 litres approx.
Weight	54 kg

Accessories



Bowl Cover

Code: [39-0060](#)



Scraper

Code: [39-0065](#)

Spares/Consumables



Bowl

Code: [39-0031/11](#)



Paddle

Code: [39-0031/10](#)



Pendulum Skid Resistance Tester

Code: 42-6000

Product Group: [Skid Resistance Testing](#), [Skid Resistance Testing](#)

The Pendulum Skid Resistance Tester was originally designed in the 1940s in the USA and further developed in the 1960s at the TRL (Transport Research Laboratory) for the testing of road surfaces.

The device measures the frictional resistance between a rubber slider mounted on the end of a pendulum arm and the surface to be tested. This provides road engineers with a method of checking the resistance of wet and dry surfaces to slipping and skidding, both in the lab and in situ.

It operates by a pendulum rotating about a spindle which is attached to a vertical pillar. At the end of the tubular arm, a head of known mass is fitted with a rubber slider. The pendulum is released from a horizontal position so that it strikes the sample surface at a constant speed. The distance travelled by the head after hitting the sample is determined by the friction of the sample surface.

Standards

EN 1097-8:2009, EN 1436:1997, EN 13036-4:2003, ASTM E303-93, BS 812 Pt 114, BS 6077 Pt 1, BS 7044, BS 7188, BS 8204, BS 7976

Further Information

Applications:

- Assessment of surface friction and skid resistance properties
- Testing of aggregates in the PSV (Polished Stone Value) test
- Testing of new road surface materials
- Testing of pedestrian pavements
- RTA (road traffic accidents)
- Litigation investigations

Features:

- Designed for lab and on site road surface testing
- Factory calibrated to EN1097-8
- Low friction arm, and lightweight pointer
- Supplied with 'F' scale for use with small slider set for 76mm slide length (PSV test)
- Highly repeatable
- Supplied with carrying case

Specification

Dimensions (WxDxH)	695 x 295 x 695 mm
Volume	0.15m3
Weight	30 kg

Accessories



1.25" Rubber Mounted PSV Slider for 42-6000

Code: [42-6000/11](#)



3.00" Rubber Mounted CEN Slider for 42-6000

Code: [42-6000/14](#)



3.00" Rubber Mounted Four S (96) Slider for 42-6000

Code: [42-6000/13](#)



3.00" Rubber Mounted TRL (55) Slider for 42-6000

Code: [42-6000/12](#)



Base Plate for Skid Resistance Tester for lab testing

Code: [42-6200](#)



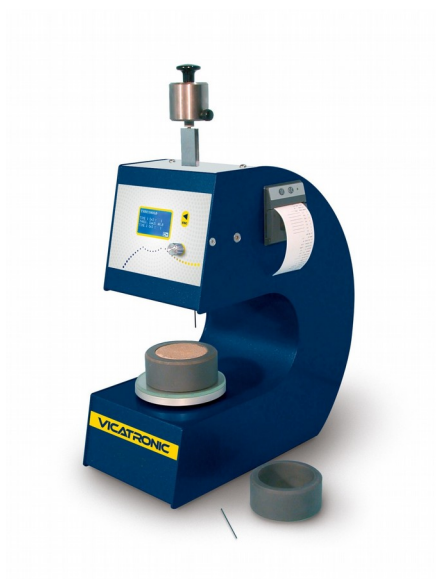
First traceable calibration for 42-6000

Code: [42-6000/15](#)



Set of 3 Spreader Feet for Skid Resistance Tester for in-situ testing

Code: [42-6000/10](#)



Automatic Vicat Apparatus

Code: [38-2015/01](#)

Product Group: [Automatic Vicat](#)

Complete with EN and ASTM Initial and Final needles, Consistency Plunger, Windows(R) software and RS232 cable, 1 x EN and ASTM Mould and Glass Plate. Suitable for continuous use in saturated humidity, at a controlled temperature of $20^{\circ}\text{C} \pm 1^{\circ}\text{C}$.

Standards

ASTM C187, ASTM C191

Further Information

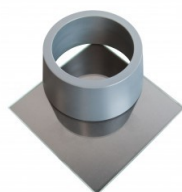
****NOT AVAILABLE FOR SALE IN THE USA****

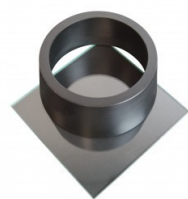
For 220 - 240 V AC, 50 - 60 Hz, 1 ph.

Accessories

ASTM Vicat Mould

Code: [38-2660](#)





EN Vicat Mould

Code: [38-2300](#)



Mould Tank

Code: [38-2015/15](#)



Needle Cleaning Device

Code: [38-2015/12](#)



Printer Paper Rolls

Code: [38-2015/14](#)



Vicat Mould

Code: [38-2200](#)

Spares/Consumables



ASTM Initial and Final Set Needle

Code: [38-2023](#)



Consistency Plunger

Code: [38-2015/16](#)



EN Initial and Final Set Needle

Code: [38-2021](#)



300 kN Load Calibration Device

Code: [37-8310](#)

Product Group: [Calibration Devices](#)

Complete with Hand Held Readout Unit & Calibration Certificate to UKAS traceable.

- Capacities 2 tonnes to 1000 tonnes
- $\leq \pm 0.1\%$ Accuracy
- Sealed to IP65
- Robust Construction
- Submersible Version Available
- Competitively Priced

The 0.1% accuracy series of column compression load cells are designed for use as reference standards for the calibration of other load cells or in high capacity weighing applications, where precise measurement and high accuracy is of utmost performance. Their simple column design and sealed construction assures excellent resistance in the most arduous conditions.

Applications: Reference standards, high capacity weighing applications, silo weighing, pile force measurement, heavy duty jack levelling systems, press calibration, centre of gravity (CoG) measurement systems and high capacity multi-point weighing systems.

Specification

Capacity	30 tonnes
Output	2.0m V/V (nominal)
Total accuracy	$\leq \pm 0.10$ of rated output
Environmental protection	IP65
Electrical connection	4m PUR cable
Operating temperature range	-20 to +70 deg C
Compensated temperature range	-10 to +50 deg C
Supply voltage	10v recommended 15v max
Operating mode	Compression



2000 kN Capacity Calibration Load Cell with Hand-Held Readout

Code: [37-8315](#)

Product Group: [Calibration Devices](#)

Supplied with rechargeable batteries and universal charger.

Further Information

****Not available for sale in the USA****

110 - 240 V, AC 50 - 60 Hz, 1 ph.

Accessories



3000 kN Load Calibration Device Complete with Hand Held Readout Unit

Code: [37-8400](#)

Alternatives



3000 kN Load Calibration Device Complete with Hand Held Readout Unit

Code: [37-8400](#)



Flakiness Gauge.

Code: [42-0410](#)

Product Group: [Flakiness Sieves and Gauges](#)

Constructed of heavy gauge sheet steel to the dimensions specified in BS 812.

Standards

BS 812

Further Information

****NOT AVAILABLE FOR SALE IN THE USA****

Alternatives



Length Gauge

Code: [42-0820](#)