



IF IT'S WORTH BUILDING, IT'S WORTH TESTING

This wishlist was generated on 25/08/2017, and contains the following Products:

78-0135/01

425 Litre Drying Oven

82-8020/01

Distilled Water Still

45-6490/01

Water Bath

79-5910

12in Dia ASTM Sieve 1.00mm Stainless Steel Mesh.

80-0200/01

ELE Sieve Shaker

88-1104/02

Ohaus Electronic Balance - 35,000 g Capacity

42-1003

Density Basket

42-1000/01

Buoyancy Balance 6Kg X 0.1G. Supplied with Support Frame Water Tank & Suspension Hook.

23-3352

Sample Splitter (Riffle Box) - 8 chutes, 2-1/2" (64 mm) chute width

23-3425

Large Capacity Sample Splitter.

78-0860

50kN Clamped Boss Load Ring

36-3090/01

ADR Touch 2000 Standard Compression Machine with Digital Readout.

37-6040

50 kN Mini-Flexural Machine

34-5210

100mm Dia Cylinder Mould 200mm Long.

34-5260

150mm Dia Cylinder Mould 300mm Long.

EL3020E

Slump Test Set

38-2695

Pocket Concrete Penetrometer

34-6250/01

Vibrating Table 600 X 400mm Table Top. 220-240V 50Hz 1Ph. Supplied with clamping assembly

34-6431/01

Vibrating Poker 22mm Dia Tip 250mm Long. 220-240V 50/60Hz 1Ph.

34-6575/01

Large Curing Tank C/W with Circulating Pump Heater/Thermostat Unit and Lower Rack

34-3590/01

Tilting Drum Concrete Mixer 120/90L/ (4/3Cu.Ft) Complete with Stand

35-1500

Advanced SilverSchmidt Concrete Test Hammer

36-3280/01

ADR Touch 2000 BS EN Compression Machine with Digital Readout and Self Centring Platens.

38-1000

Blaine Air Permeability Apparatus

38-2012

Vicat Apparatus

38-6000

Flow Table



425 Litre Drying Oven

Code: [78-0135/01](#)

Product Group: [Oven Drying Method](#), [Oven Drying Method](#), [Oven Drying Method](#)

This oven is designed for drying large quantities of soils and aggregate samples and maintains the temperature in accordance with BS EN and ASTM requirements.

The oven is constructed of mild steel with a powder coated exterior and an aluminium coated steel chamber which is both durable and corrosion resistant.

The control system comprises of a microprocessor digital controller with overheat safety system. They also include main switch with indicator and heat and overheat indicators.

The temperature range is 40-180°C.

Standards

EN 12697-32, EN 13280-4, BS 598-104, BS 1377

Specification

| | |
|---------------------------------|---------------------|
| Capacity | 425 litres |
| External Dimensions (h x w x d) | 970 x 1410 x 810 mm |
| Internal Dimensions (h x w x d) | 760 x 920 x 640 mm |
| Fluctuation | ± 0.75°C |
| Rated power heater elements | 2000 W |
| Shelves supplied | 4 |
| Shelf positions | 5 |
| Weight | 120 kg |

Alternatives



100 Litre Drying Oven

Code: [78-1225/01](#)



150 Litre Drying Oven

Code: [78-1235/01](#)



225 Litre Drying Oven

Code: [78-1250/01](#)



50 Litre Drying Oven

Code: [78-1215/01](#)



Distilled Water Still

Code: [82-8020/01](#)

Product Group: [Distilled Water Still](#)

Further Information

****NOT AVAILABLE FOR SALE IN THE USA****

Specification

| | |
|------------------------|--|
| Dimensions (l x w x h) | 590 x 530 x 940 mm |
| Boiling chamber | Glass |
| Condenser | Borosilicate glass |
| Output | 3.5 litres/hr when permanently connected to water supply |
| Electrical supply | 220 – 240 V AC, 50 - 60 Hz, 1 ph |
| Rated power | 2.75 kW |
| Weight | 12 kg |



Water Bath

Code: [45-6490/01](#)

Product Group: [N/A](#)

60 litre water bath with stainless steel tank and outer case suitable for marshall test specimens and fitted with a digital thermostat and electric circulation unit. Complete with bath cover and perforated specimen tray.

Inner dimensions: 700 x 550 x 165 mm.

Outer dimensions : 900 x 640 x 340 mm.

Standards

EN 12697-30

Further Information

****NOT AVAILABLE FOR SALE IN THE USA****

Temperature range ambient to 95°C \pm 1°C. For 220 - 240 V AC, 50 - 60 Hz 1ph.

Accessories

Steel Block

Code: [45-6463](#)



Alternatives

Steel Block

Code: [45-6463](#)







12in Dia ASTM Sieve 1.00mm Stainless Steel Mesh.

Code: 79-5910

Product Group: U.S. Standard Testing Sieves, 12" Diameter ASTM Sieves, 12" Diameter ASTM Sieves, 12" Diameter ASTM Sieves

Standards

ASTM E11

Specification

| | |
|---------------------------------|--|
| Frames | Full height; 3-1/4" (82.5 mm) depth to mesh. |
| Construction | Polished and lacquered brass with S.S. mesh. |
| Nameplates | Show standard, alternate and Tyler Screen Scale equivalent designations. |
| Weights | Net 4 lbs. (1.8 kg). |
| Sieve Size or Number | No. 18 |
| Sieve Opening Standard | 1.00 mm |
| Sieve Opening Alternative (in.) | 0.0394 |



ELE Sieve Shaker

Code: [80-0200/01](#)

Product Group: [ELE Sieve Shaker](#)

The ELE sieve shaker is powered by an electromagnetic drive that has no rotating parts to wear making it maintenance free and extremely quiet in operation.

The unit features a triple Vertical-Lateral-Rotary vibrating action that moves the sample over the sieve producing faster more efficient sieving, while the rapid vertical movements also help keep the apertures from blinding.

The shaker is ideal for laboratory or on site use. It is robust, compact and sufficiently lightweight to be portable. The separate digital microprocessor controlled console unit incorporates a keypad for setting the sieving program and is isolated from any effects of vibration from the shaker.

As standard the shaker includes, timer 0-999 minutes, adjustable vibration intensity and adjustable intermittent or continuous operation.

Further Information

****NOT AVAILABLE FOR SALE IN THE USA****

The unit accepts up to ten 200 mm or 8 inch, full height, diameter sieves and lid and receiver, or up to six 300 mm or 12 inch diameter sieves and lid and receiver. Complete as specified. Dimensions (l x w x h) 380 x 440 x 1085 mm. For 220 - 240 V AC, 50 Hz 1ph.



Ohaus Electronic Balance - 35,000 g Capacity

Code: [88-1104/02](#)

Product Group: [Ohaus Series Electronic Balances](#)

Further Information

100-240V, 50/60 Hz.

Specification

| | |
|------------------------------|--|
| Maximum Capacity | 35000 g |
| Readability | 0.5 g |
| Internal Calibration | NO |
| Pan Size (in/cm) | 11.0 x 14.9 in / 28.0 x 37.7 cm |
| Dimensions w x h x d (in/cm) | 14.9 x 18.4 x 5.0 in / 37 x 46.7 x 12.8 cm |
| Shipping Wt. (lb/kg) | 24 lb / 10.6 kg |

Alternatives



High Capacity Electronic Balance

Code: [88-1094/02](#)



Ohaus Electronic Balance - 2,100 g Capacity

Code: [88-1044/02](#)



Ohaus Electronic Balance - 2,100 g Capacity

Code: [88-1220/02A](#)



Ohaus Electronic Balance - 210 g Capacity

Code: [88-1200/02A](#)



Ohaus Electronic Balance - 24,000 g Capacity

Code: [88-1098/02](#)



Ohaus Electronic Balance - 3,100 g Capacity

Code: [88-1054/02](#)



Ohaus Electronic Balance - 310 g Capacity

Code: [88-1024/02](#)



Ohaus Electronic Balance - 6,000 g Capacity

Code: [88-1074/02](#)



Ohaus Electronic Balance - 8,100 g Capacity

Code: [88-1230/02A](#)



Ohaus Electronic Balance - 8,100 g Capacity

Code: [88-1084/02](#)



Ohaus Electronic Balance - 810 g Capacity

Code: [88-1210/02A](#)



Ohaus Electronic Balance - 810 g Capacity

Code: [88-1034/02](#)



Density Basket

Code: [42-1003](#)

Product Group: [ELE Buoyancy Balance, Density Basket](#)

ASTM C-127; AASHTO T-85. 8" diam. x 8" high, stainless steel mesh. ASTM C-127; AASHTO T-85. 8" diam. x 8" high, stainless steel mesh.

Standards

ASTM C127, AASHTO T85

Specification

Construction

Reinforced No. 8 wire mesh.

Handle

Bail-type.

Dimensions

8" diam. x 8" h. (203 x 203 mm).

Weight

Net 2 lbs. (0.91 kg).



Buoyancy Balance 6Kg X 0.1G. Supplied with Support Frame Water Tank & Suspension Hook.

Code: [42-1000/01](#)

Product Group: [Particle Density \(specific gravity\) and Water Absorption for Coarse Aggregates](#)

The buoyancy balance system developed by ELE consists of a rigid support frame, incorporating a water tank mounted on a platform. A mechanical lifting device is used to raise the water tank through the frame height immersing the specimen suspended below the balance. The balance supplied may also be used as a standard weighing device, thus providing a versatile and comprehensive weighing system in the laboratory. 6000 g x 0.1 g supplied with frame, water tank and suspension hook.

Standards

EN 1097-6, EN 12697-6, BS 812, ASTM C127, AASHTO T85

Further Information

****NOT AVAILABLE FOR SALE IN THE USA****

For 220 - 240 V AC, 50 - 60 Hz, 1 ph.

Accessories



200 mm Diameter Lid

Code: [79-0010](#)



200 mm Diameter Receiver

Code: [79-0020](#)



200mm Dia BS Sieve 31.5mm Perforated Plate.

Code: [79-1630](#)



200mm Dia BS Sieve 4.00mm Stainless Steel Mesh.

Code: [79-0310](#)



200mm Dia BS Sieve 63 Mic Stainless Steel Mesh.

Code: [79-0070](#)



200mm Dia BS Sieve 63.0mm Perforated Plate.

Code: [79-1670](#)



Digital Pocket Thermometer

Code: [82-5420](#)



Sample Container - Tinned Steel 10 litres

Code: [81-3060](#)



Sample Tray - 406 x 406 x 50 mm

Code: [81-4030](#)



Wire Basket Brass with Handle Nominal 6000Cm³ Capacity with 1.7mm Wire Mesh.

Code: [42-1005](#)



Sample Splitter (Riffle Box) - 8 chutes, 2-1/2" (64 mm) chute width

Code: [23-3352](#)

Product Group: [Sample Splitters \(Riffles\)](#)

Standards

ASTM C136, ASTM C702, ASTM D271, ASTM D492, AASHTO T27, AASHTO T87, AASHTO T248

Specification

| | |
|-------------------|-----------------------------------|
| Chutes | Stainless steel. |
| Hopper | Stainless steel. |
| Frame | Painted steel. |
| Hopper Dimensions | 9-5/8" x 23 -1/2" (244 x 597 mm). |
| Weight | Net 39 lbs. (17.7 kg). |

Spares/Consumables



Pan for Sample Splitter 23-3352

Code: [23-3352/10](#)

Alternatives



Large Capacity Sample Splitter.

Code: [23-3425](#)



Sample Splitter (Riffle Box) - 14 chutes, 1/2" (13 mm) chute width

Code: [23-3052](#)



Sample Splitter (Riffle Box) - 14 chutes, 3/4" (19 mm) chute width

Code: [23-3102](#)



Sample Splitter (Riffle Box) - 16 chutes, 1" (25 mm) chute width

Code: [23-3152](#)



Sample Splitter (Riffle Box) - 8 chutes, 2" (51 mm) chute width

Code: [23-3302](#)



Table Brush

Code: [88-7810](#)



Large Capacity Sample Splitter.

Code: 23-3425

Product Group: Large Capacity Sample Splitter, Large Sample Splitter

The splitter is designed for the reduction of test samples which are too large in volume to be conveniently handled. It divides samples so that half is representative of the original total sample and handles material up to 6 inches in particle size.

The lever-actuated unit is constructed of heavy gauge welded steel with a hopper which holds up to 1 cuft. The single splitter chute provides wide flexibility in sizes of opening and adjustment is provided for chutes of 0.5, 1.5, 2, 3, 4 or 6 inch by positioning of the chute bars. Overall height is approximately 1 meter. Hopper size 735 mm long x 480 mm wide (approx).

Further Information

Complete with 2 material pans and a bag-loading chute.

Specification

| | |
|--------------------|---|
| Capacity | 1 cu. ft. (0.028 m3); for sand sizes up to 4" (102 mm). |
| Hopper | Lever-actuated, clamshell design. |
| Chute Bars | 48 aluminum bars, 1/2" (13 mm) width. |
| Chute Area | 24 " (610 mm) overall width. |
| Chute Openings | Adjustable; 1/2", 1", 1-1/2", 2", 3", 4", or 6". |
| Frame | Welded, heavy-gage steel. |
| Chute Attachment | Replaces pan to allow sample collection in bag; 28-1/4" l. x 7"w. x 5-1/2" h. (718 x 178 x 140 mm). |
| Material Pans | Two included; 25 -3/4" l. x 9" w. x 6-1/2" h. (654 x 229 x 165 mm). |
| Overall Dimensions | 29" l. x 19" w. x 39" h. (737 x 483 x 999 mm). |
| Weight | Shpg. 142 lbs. (64 kg). |

Accessories



Sample Bag - 10" x 18" (254 x 457 mm)

Code: [23-1420](#)



Sample Bag - 17" x 32" (432 x 813 mm)

Code: [23-1422](#)

Alternatives



Large Capacity Sample Splitter.

Code: [23-3425](#)



Sample Splitter (Riffle Box) - 14 chutes, 1/2" (13 mm) chute width

Code: [23-3052](#)



Sample Splitter (Riffle Box) - 14 chutes, 3/4" (19 mm) chute width

Code: [23-3102](#)



Sample Splitter (Riffle Box) - 16 chutes, 1" (25 mm) chute width

Code: 23-3152



Sample Splitter (Riffle Box) - 8 chutes, 2-1/2" (64 mm) chute width

Code: 23-3352



Sample Splitter (Riffle Box) - 8 chutes, 2" (51 mm) chute width

Code: 23-3302



50kN Clamped Boss Load Ring

Code: 78-0860

Product Group: Clamped Boss Load Rings, Digital Tritest 50 Load Frame, Load Measurement, Proving Rings, Accessories for the Marshall test, Accessories for the Marshall Test, CBR-Test 50 Machine, Load Measurement, CBR Loading Press, Hand-Operated, Force measurement

Calibrated in compression.

Standards

EN 12697-34

Specification

| | |
|---|--------------------|
| Capacity: kN, kgf, lbf | 50.0, 5000, 11,200 |
| Typical Design sensitivity: N/div, kgf/div, lbf/div | 45.5, 4.54, 10.18 |
| Overall height mm | 248 |
| Approx weight kg | 7.9 |
| Value of CBR | Above 40% |
| Capacity - kN | 50 |
| Capacity - kgf | 5000 |
| Capacity - lbf | 11,200 |
| Typical Design Sensitivity - kN/div | 45.5 |
| Typical Design Sensitivity - Kgf/div | 4.54 |
| Typical Design Sensitivity - lbf/div | 10.18 |
| Overall Height | 9.76" (248 mm) |
| Approx Weight | 17.4 lbs.(7.9 kg) |

Accessories



Clamped Boss Load Ring - 10.0 kN

Code: 78-0460



Clamped Boss Load Ring - 2.0 kN

Code: [78-0060](#)



Clamped Boss Load Ring - 28.0 kN

Code: [78-0760](#)



Clamped Boss Load Ring - 3.0 kN

Code: [78-0160](#)



Clamped Boss Load Ring - 4.5 kN

Code: [78-0260](#)



Digital Proving Ring, 11,200 lbs (50.0 kN)

Code: [78-0864](#)

Spares/Consumables



Spare Dial Indicator for Load Rings

Code: [78-5461](#)

Alternatives



Clamped Boss Load Ring - 10.0 kN

Code: [78-0460](#)



Clamped Boss Load Ring - 2.0 kN

Code: [78-0060](#)



Clamped Boss Load Ring - 28.0 kN

Code: [78-0760](#)



Clamped Boss Load Ring - 3.0 kN

Code: [78-0160](#)



Clamped Boss Load Ring - 4.5 kN

Code: [78-0260](#)



Digital Proving Ring, 11,200 lbs (50.0 kN)

Code: [78-0864](#)



ADR Touch 2000 Standard Compression Machine with Digital Readout.

Code: [36-3090/01](#)

Product Group: [General Purpose Compression Machines](#)

- 2000 kN/450 000 lbf capacity
- Tests 150 and 100 mm concrete cubes or cylinders up to 320 x 160 mm diameter
- Supplied with Windows(R) download software as standard.

Incorporating the ADR Touch digital readout, the machines are designed to test cubes and cylinders in accordance with most International Standards. Supplied fitted for cylinder testing with safety gates. When used for cube testing appropriate distance pieces according to the size of specimen to be tested are required and must be ordered separately.

Further Information

****NOT AVAILABLE FOR SALE IN THE USA****

The Standard range of compression machines has been designed to meet the need for a simple, economic and reliable means of testing concrete.

Whilst delivering all the features and reputation of the established ADR Series with its extensive design history, the new and improved user interface provides a high quality platform for testing that enhances the performance of ELE's compression machines.

New, sophisticated electronics further the benefits of simplified operation, whilst delivering the highest levels of accuracy in testing concrete and cement/mortar samples, satisfying the needs of Quality Control Managers, Lab Managers and Technicians.

ACCURACY & SAVINGS

The new ADR Touch Series, with 145mm (5.7") high resolution QVGA touch screen interface and intuitive menu-driven operation, reduces the time taken to set up the machine and perform tests, reducing the time to train staff by up to 25%.

- Up to 6 sample types can be set as favorites, enabling one-touch set up for repeat testing.
- Full, QWERTY touch pad for input of test data.

Most testing errors produce lower strength results. Noncompliant loading rates can generate errors in measured strength. The user interface includes real-time display of load vs. time, further ensuring accurate and consistent test results and providing "goodness of test" data to improve traceability in your QC operations.

TRACEABILITY & DATA QUALITY

The ADR range now provides improved data quality and traceability in due diligence cases - it is now possible to demonstrate traceability all the way from the machine/user to the accreditation body, increasing your reputation and peace of mind - all test results now come complete with the machine serial number attached.

- Enhanced USB data communications between PC and machine - eliminating the need for download software.
- Two gigabytes of storage memory.
- Full customization of sample sizes - stress calculations are automatically recalculated.

USER SAFETY

With full safety gates as standard, total systems diagnostics, ram run-out switches and overload warnings ensure the safety of your employees and the reliability of your machine.

Specification

| | |
|----------------------|---------------------------|
| Testing Standards | BS EN ISO 7500-1, ASTM E4 |
| Capacity | 2000 kN |
| Cubes (Concrete) | Up to 150 mm |
| Cylinders (Concrete) | Up to 160 x 320 mm |
| Blocks | n/a |
| Flexural Testing | Via Flexural Frame |
| TFV and ACV | Yes |
| Voltage Supply | 220-240V 50/60 Hz 1Ph. |
| Frame Type | Welded |
| Max vert. Clearance | 340 mm |
| Max hor. Clearance | 325 mm |
| Platen Sizes | Lower, Upper 222 mm |
| Max Ram Travel | 50 mm |

Accessories



100kN Flexural Fitting Kit (ADR) Used for Connecting Flexural Frames to ADR Compression Machines.

Code: [37-6138](#)



2000 kN Capacity Calibration Load Cell with Hand-Held Readout

Code: [37-8315](#)



ADR Touch Head for Compression machines

Code: [37-4950/09](#)



Flexible Hose

Code: [5038B0027](#)



Impact Printer Rs232 Serial Connection. Supplied Complete with 1 Paper Roll.

Code: [37-4859/01](#)



Standard Distance Piece - 100 mm Depth

Code: [37-5100](#)



Standard Distance Piece - 20 mm Depth

Code: [37-4980](#)



Standard Distance Piece - 50 mm Depth

Code: [37-5000](#)



Standard Distance Piece - 60 mm Depth

Code: [37-5020](#)



Standard Distance Piece - 80 mm Depth

Code: [37-5050](#)

Spares/Consumables



Pressure transducer, 0-700bar, 0.05 to 10v DC Output

Code: [6014A0062](#)

Alternatives



ADR Touch 1500 Compression Machine with Digital Readout.

Code: [36-0720/01](#)



50 kN Mini-Flexural Machine

Code: [37-6040](#)

Product Group: [Hand-operated Flexural Machine](#)

- Hand operated
- Rugged, high strength frame
- Double-action hydraulic pump
- Dual calibrated (kN/lbf) gauge

This compact flexural machine is designed for testing 100 mm and 150 mm square section beams. The base incorporates a series of bearer locating points, enabling a wide range of tests to be performed.

The unit is self contained with hydraulic pressure applied through a double-action hand pump to a ram fitted in the top of the frame making this an ideal portable onsite quality control machine. A 200 mm diameter load gauge, dual calibrated to 50 kN x 0.1 kN and 11000 lbf x 50 lbf graduations is fitted as standard.

Standards

BS 1881-131

Further Information

****Not available for sale in the USA****



100mm Dia Cylinder Mould 200mm Long.

Code: [34-5210](#)

Product Group: [Cylinder Moulds](#)

100 mm diameter x 200 mm long, complete with base plate.

Standards

EN 12390-1, EN 12390-2

Further Information

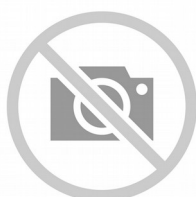
****NOT AVAILABLE FOR SALE IN THE USA****

Accessories



Aluminium Scoop Large

Code: [81-0220](#)



Compacting Bar 25mm Sq X 380mm

Code: [34-2910](#)



Float - Plasterer's type

Code: [81-0340](#)



Mould Oil (25 Litre Drum)

Code: [82-7341](#)



Tamping Rod 16mm Dia X 600mm long hemispherical at both ends.

Code: [34-0130](#)



Wire Brush

Code: [81-0705](#)

Spares/Consumables



Soft Headed Mallet.

Code: [29-5020](#)

Alternatives



Vibrating Table 600 X 400mm Table Top. 220-240V 50Hz 1Ph. Supplied with clamping assembly

Code: [34-6250/01](#)



150mm Dia Cylinder Mould 300mm Long.

Code: [34-5260](#)

Product Group: [Cylinder Moulds](#)

150 mm diameter x 300 mm long, complete with base plate and locking ring.

Standards

EN 12390-1, EN 12390-2

Further Information

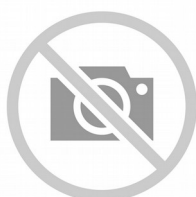
****NOT AVAILABLE FOR SALE IN THE USA****

Accessories



Aluminium Scoop Large

Code: [81-0220](#)



Compacting Bar 25mm Sq X 380mm

Code: [34-2910](#)



Float - Plasterer's type

Code: [81-0340](#)



Mould Oil (25 Litre Drum)

Code: [82-7341](#)



Tamping Rod 16mm Dia X 600mm long hemispherical at both ends.

Code: [34-0130](#)



Wire Brush

Code: [81-0705](#)

Spares/Consumables



Soft Headed Mallet.

Code: [29-5020](#)

Alternatives



Vibrating Table 600 X 400mm Table Top. 220-240V 50Hz 1Ph. Supplied with clamping assembly

Code: [34-6250/01](#)



Slump Test Set

Code: [EL3020E](#)

Product Group: [Slump Test Set](#)

Set includes:

- 1 Metal Slump Cone (34-0108).
- 1 Graduated Tamping Rod (34-0132).
- 1 Cement Pan (34-0152).
- 1 Cement Brush (39-0425).
- 1 Mixing Trowel (88-7400).

Standards

ASTM C143/C143M, ASTM C192, AASHTO T23, AASHTO T119, ASTM T126

Further Information

Includes large cement pan

Accessories



Slump Cone Funnel

Code: [34-0180](#)

Alternatives



K-slump Tester

Code: [34-0580](#)



Portable Slump Test Set

Code: [EL3010E](#)



Pocket Concrete Penetrometer

Code: 38-2695

Product Group: Concrete Mortar Penetrometer,
Concrete Mortar Penetrometer, Setting Time by
Penetration Resistance

Supplied complete with belt-loop, canvas carrying
case.

Standards

ASTM C187, ASTM C191, ASTM C780

Specification

| | |
|---------------|--|
| Needle | Steel shaft; 1/20 sq. in. surface area. |
| Range | 0 to 700 psi. |
| Scale | Direct-reading; indicator sleeve holds reading until released. |
| Dimensions | 3/4" (19 mm) diam. x 7" (178 mm) long. |
| Carrying Case | Canvas, with belt-loop. |
| Weight | Net 8 oz. (227 g). |



Vibrating Table 600 X 400mm Table Top. 220-240V 50Hz 1Ph. Supplied with clamping assembly

Code: [34-6250/01](#)

Product Group: [Vibrating Table](#)

Vibrating table mounted on a steel stand, supplied with clamp assembly.

Standards

EN 12390-2, EN 12350-6, EN 12350-7

Further Information

****NOT AVAILABLE FOR SALE IN THE USA****

3000 cycles per minute. For 220 - 240 V AC, 50 Hz, 1 ph.

Specification

| | |
|-------------------------|-------------------------|
| Dimensions (table top) | 600 x 400 mm |
| Maximum no. Cube moulds | 2 x 150 mm ² |
| Clamp Assembly | Single |
| Weight | 60 kg |

Accessories



Compacting Bar 25mm Sq X 380mm

Code: [34-2910](#)



Wire Brush

Code: [81-0705](#)

Alternatives



100 X 100 X 500mm Beam Mould.

Code: [34-5003](#)



100mm Cube Mould 2-Part Clamp Type. Cast Iron Construction. BS EN Compliant.

Code: [34-4650](#)



100mm Cube Mould 4-Part Clamp Type. Cast Iron Construction. BS EN Compliant.

Code: [34-4520](#)



100mm Dia Cylinder Mould 200mm Long.

Code: [34-5210](#)



150 X 150 X 750mm Beam Mould.

Code: [34-5053](#)



150mm Cube Mould 2-Part Clamp Type. Cast Iron Construction. BS EN Compliant.

Code: [34-4670](#)



150mm Cube Mould 4-Part Clamp Type. Cast Iron Construction. BS EN Compliant.

Code: [34-4570](#)



150mm Dia Cylinder Mould 150mm Long.

Code: [34-5230](#)



150mm Dia Cylinder Mould 300mm Long.

Code: [34-5260](#)



**200mm Cube Mould Clamp Type. Cast Iron Construction.
Stamped Mould Sections. EN Compliant.**

Code: [34-4620](#)



Vibrating Poker 22mm Dia Tip 250mm Long. 220-240V 50/60Hz 1Ph.

Code: [34-6431/01](#)

Product Group: [Vibrating Poker](#)

- High amplitude and speed
- Flexible shaft for long life

Used as an internal means of vibratory compaction. The poker is inserted into the concrete which is then compacted by the high frequency vibration action. For use in either laboratory or site environments, the diameter of the vibrating tip must not exceed 25% of the smallest dimension of the specimen.

Standards

EN 12390-2

Further Information

****NOT AVAILABLE FOR SALE IN THE USA****

For 220 - 240 V AC, 50 - 60 Hz, 1 ph

Specification

| | |
|--------------------|------------------------------|
| Tip Dimensions | 22 mm diameter x 250 mm long |
| Shaft dimensions | 2.0 m long |
| Speed | 12,000 vibrations/min. |
| Overall Dimensions | 200 x 300 x 350 mm |
| Weight | 7 kg |



Large Curing Tank C/W with Circulating Pump Heater/Thermostat Unit and Lower Rack

Code: [34-6575/01](#)

Product Group: [Expansion \(swell\) Test Equipment, Large Curing Tank](#)

This Large Curing Tank is supplied complete with a submersible pump, immersion heater/thermostat unit and separate control panel. The tank includes a lower rack as standard and is designed to maintain the temperature at $20 \pm 2^{\circ}\text{C}$, providing that the ambient temperature does not fall below 15°C or rise above 20°C .

Standards

EN 12390-2, ASTM C31, AASHTO T23

Further Information

****NOT AVAILABLE FOR SALE IN THE USA****

Supplied as specified. For 220 - 240 V AC, 50 - 60 Hz, 1 ph.

Specification

| | |
|---------------------|----------------------------------|
| Internal Dimensions | 1040 x 1040 x 605 mm (l x w x h) |
| Capacity | 650 litres |
| Rated Power | 2000 watt |
| Weight | 60 kg |

Accessories



Maximum and Minimum Thermometer

Code: [82-5310](#)

Alternatives



Jolting Table 220 - 240 V AC 60 Hz

Code: [39-1150/06](#)



Tilting Drum Concrete Mixer 120/90L/ (4/3Cu.Ft) Complete with Stand

Code: [34-3590/01](#)

Product Group: [Tilting Drum Mixer](#)

120/90 litre mixing capacity. For 220 - 240 V AC, 50 Hz, 1 ph.

Standards

EN 12390-2

Further Information

****NOT AVAILABLE FOR SALE IN THE USA****



Advanced SilverSchmidt Concrete Test Hammer

Code: 35-1500

Product Group: Surface Hardness

The SilverSchmidt ST/PC is the first integrated concrete test hammer featuring true rebound value and unmatched repeatability.

Two factors contribute to the improved performance of this concrete test hammer over its predecessors:

- Velocity based detection of the rebound quotient
- The lightweight hybrid design of the impact plunger is made from aerospace alloy, matched to the elastic properties of the concrete and equipped with a hardness steel cap

Independent validation testing by BAM (Federal Institute for Materials Research and Testing, Germany) has shown the SilverSchmidt ST/PC to have less dispersion than the classical concrete test hammer over the entire range.

The unique design and high quality construction of the concrete test hammer SilverSchmidt ST/PC makes rebound hammer testing quicker and more accurate than ever before.

NOT AVAILABLE FOR SALE IN THE USA

Further Information

- The SilverSchmidt ST/PC concrete test hammer combines a high measurement accuracy with an unmatched repeatability.
- The rebound value requires no angular correction
- The concrete test hammer offers customer conversion curves for a wide range of compressive concrete strengths, including low f_c (<10 N/mm², 1'450 psi) and high strength concrete (up to 100 N/mm², 14'500 psi)
- A large number of measurement points can be easily collected by the concrete test hammer and automatically evaluated according to statistical data
- The concrete test hammer offers automatic conversion to the required measurement unit (MPa,



N/mm², kg/cm², psi)

Specification

| | |
|--------------------------------|---|
| Technical Data | Silver Schmidt |
| Impact Energy | 2.207 Nm |
| Hammer Mass | 135 g |
| Spring Constant | 0.79 N/mm |
| Spring Extension | 75 mm (2.95") |
| Dimensions | 55 x 55 x 255 mm (2.16" x 2.16" x 9.84") |
| Concrete Compressive Strengths | 10-100 N/mm ² (1450-14500 psi) |
| Weight | 570 g (1.4 lb) |



ADR Touch 2000 BS EN Compression Machine with Digital Readout and Self Centring Platens.

Code: 36-3280/01

Product Group: BS EN Compression Machines

The ADR Touch range of 2000 kN and 3000 kN capacity compression machines has been designed to meet the need for reliable and consistent testing. The load frame is a welded steel fabrication carrying the ball-seated upper platen. Positively located on the loading ram, which is protected from debris by a flexible cover, the lower platen is marked for the centring of cube and cylinder specimens. Self-centring lower platens for cube location are supplied as standard on EN machines and are available as an optional extra on the standard machine. The two machines for cube testing to EN standards are assembled and aligned using a special compression frame stability tester.

The dimensions of the frame allow the testing of concrete cylinders up to 320 mm long x 160 mm diameter, 150 and 100 mm square cubes, and on EN/BS machines, 200 mm square cubes. Kerbs and flagstones may also be tested on ADR machines as well as 150 mm and 100 mm square section beams to ASTM C78 using the optional 100 kN flexural frames which are connected to the power pack.

Standards

EN 12350-6, NF P18-411

Further Information

****Not available for sale in the USA****

ADR Touch BS EN 2000 and 3000 kN compression machines are supplied complete with self-centring lower platen and safety gates fitted with interlock switches ready for testing 300 x 150 mm diameter cylinders.

Whilst delivering all the features and reputation of the established ADR Series with its extensive design history, the new and improved user interface provides a high quality platform for testing that enhances the performance of ELE's compression machines.

New, sophisticated electronics further the benefits of simplified operation, whilst delivering the highest levels of accuracy in testing concrete and cement/mortar samples, satisfying the needs of Quality Control Managers, Lab Managers and Technicians.

ACCURACY & SAVINGS

The new ADR Touch Series, with 145mm (5.7") high resolution QVGA touch screen interface and intuitive menu-driven operation, reduces the time taken to set up the machine and perform tests, reducing the time to train staff by up to 25%.

- Up to 6 sample types can be set as favorites, enabling one-touch set up for repeat testing.
- Full, QWERTY touch pad for input of test data.

Most testing errors produce lower strength results. Noncompliant loading rates can generate errors in measured strength. The user interface includes real-time display of load vs. time, further ensuring accurate and consistent test results and providing "goodness of test" data to improve traceability in your QC operations.

TRACEABILITY & DATA QUALITY

The ADR range now provides improved data quality and traceability in due diligence cases - it is now possible to demonstrate traceability all the way from the machine/user to the accreditation body, increasing your reputation and peace of mind - all test results now come complete with the machine serial number attached.

- Enhanced USB data communications between PC and machine - eliminating the need for download software.
- Two gigabytes of storage memory.
- Full customization of sample sizes - stress calculations are automatically recalculated.

USER SAFETY

With full safety gates as standard, total systems diagnostics, ram run-out switches and overload warnings ensure the safety of your employees and the reliability of your machine.

Specification

| | |
|-------------------------|--|
| Testing Standards | BS EN 12390-4, BS EN 12390-3, BS EN 12390-4, BS EN 12390-5, EN 12504-1, EN 1354, EN 1521, EN 3161, EN 1338, EN 772-6, EN 13286-41, BS 3892-3, BS 187, BS 6717, BS EN ISO 7500-1, ASTM E4 |
| Capacity | 2000 kN |
| Cubes (Concrete) | Up to 200 mm |
| Cylinders (Concrete) | Up to 160 x 320 mm |
| Blocks | Via optional Platen Handling System |
| Flexural Testing | Via Flexural Frame |
| TFV and ACV | Yes |
| Voltage Supply | 220-240V 50/60 Hz 1Ph. |
| Frame Class (Stability) | Tested |
| Frame Type | Welded |
| Max vert. Clearance | 340 mm |
| Max hor. Clearance | 355 mm |
| Platen Sizes | Lower 220mm sq, Upper 300mm dia |
| Max Ram Travel | 50 mm |

Accessories



100kN Flexural Fitting Kit (ADR) Used for Connecting Flexural Frames to ADR Compression Machines.

Code: [37-6138](#)



2000 kN Capacity Calibration Load Cell with Hand-Held Readout

Code: [37-8315](#)



ADR Touch Head for Compression machines

Code: [37-4950/09](#)



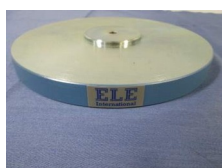
BS/EN Standard Rectangular Platen

Code: [37-4860](#)



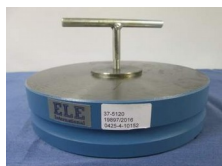
EN 12390-3/4 Distance Piece - 100 mm Depth

Code: [37-5180](#)



EN 12390-3/4 Distance Piece - 20 mm Depth

Code: [37-5110](#)



EN 12390-3/4 Distance Piece - 50 mm Depth

Code: [37-5120](#)



EN 12390-3/4 Distance Piece - 60 mm Depth

Code: [37-5140](#)



Extended Front Safety Gate for Use with 2000kN BS/EN Load Frames Fitted with Rectangular Platens.

Code: [37-4835](#)



Impact Printer Rs232 Serial Connection. Supplied Complete with 1 Paper Roll.

Code: [37-4859/01](#)

Spares/Consumables



Pressure transducer, 0-700bar, 0.05 to 10v DC Output

Code: [6014A0062](#)



Blaine Air Permeability Apparatus

Code: 38-1000

Product Group: Blaine Fineness Apparatus,
Determination of Fineness Blaine Apparatus

Standards

EN 196-6, EN 459-2, EN 13286-44, BS 4359-2, ASTM C204, AASHTO T153

Specification

| | |
|--------------|---|
| Cell | Stainless steel; 12.70 \pm 0.10 mm i.d. |
| Disk | 0.9 \pm 0.1 mm thick with 30-40 one mm diam. holes. |
| Plunger | Stainless steel. |
| Manometer | U-tube glass with ground joint, stop cock and rubber bulb assembly. |
| Filter Paper | 12.70 mm diam. |
| Fluid | Pure Mineral Oil. |
| Weight | Net 7 lbs. (3.2 kg). |

Accessories



Electronic Balance - 620 g x 0.001 g

Code: 78-5405/01



Filter Papers

Code: [38-0650](#)



Pure Mineral Oil 1 Litre Bottle.

Code: [38-0620](#)



Reference Cement

Code: [38-0645](#)

Spares/Consumables



Blaine Air Permeability Cell

Code: [38-1000/15](#)



Filter Paper

Code: [38-0652](#)



Manometer U-tube

Code: [38-1000/10](#)



Vicat Apparatus

Code: [38-2012](#)

Product Group: [Vicat Apparatus](#)

Includes Vicat needle and mould.

Standards

ASTM C91, ASTM C187, ASTM C191, AASHTO T129, AASHTO T131

Specification

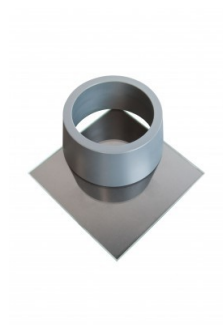
| | |
|---------|---|
| Plunger | Reversible; 10 mm diam. at one end and 1 mm diam. needle at other end; combined weight 300 grams. |
| Needle | Steel; mounted in plunger; 1 mm diam. x 50 mm long. |
| Scale | Graduated in millimeters. |
| Mold | Hard rubber; 70 mm base diam. x 60 mm top diam. x 40 mm h. |
| Weight | Net 4 lbs. (1.8 kg). |

Accessories

ASTM Initial Set Needle

Code: [38-2620](#)





ASTM Vicat Mould

Code: [38-2660](#)



Flow Table

Code: [38-6000](#)

Product Group: [Flow and Workability of Mortar Lime](#)

Manufactured from cast bronze as specified in BS and ASTM C230. Complete with Tripod and Baseplate.

Standards

BS 4551-1, BS 3892-1, ASTM C230

Further Information

****NOT AVAILABLE FOR SALE IN THE USA****

Accessories



ASTM Calipers

Code: [38-6080](#)



Flow Mould

Code: [38-6040](#)



Motorised Unit for the 38-6000 Flow Table

Code: [38-6100/01](#)



Plastic Tamper

Code: 38-6160