



IF IT'S WORTH BUILDING, IT'S WORTH TESTING

Contents

www.ele.com
+44 (0) 01525 249 200



This wishlist was generated on 10/09/2017, and contains the following Products:

88-3000/02

Standard Bench Mixer

23-1378

Basic Auger Kit

38-2012

Vicat Apparatus

82-8600/01

Water Bath - 18 litres

38-0200/01

ELE Flame Photometer

83-4170/01

Muffle Furnace



Standard Bench Mixer

Code: [88-3000/02](#)

Product Group: [Standard Bench Mixers](#)

115vAC, 60Hz, 1Ø.

Specification

Capacity	15 qt. (14 .2 liter) bowl. Actual sample capacity is lower and varies based on consistency and material type being mixed.
Motor	1/3 hp.
Controls	Momentary contact STOP and START buttons and contactor.
Speeds	4-locked in speeds of 125 , 180, 24 0 and 300 rpm; plus any in-between speed.
Dimensions	13 -3/4" w. x 25 -3/8" d. x 28-1/4" h. (349 x 644 x 717 mm).
Weight	Net 14 6 lbs. (66 kg); Shpg. 170 lbs. (77 kg).



Basic Auger Kit

Code: [23-1378](#)

Product Group: [Basic Auger Kit](#)

- Basic soil sampling tools in one field ready kit.
- Includes access augers, extensions, and core sampler.
- Accessories included in convenient carrying case.

The Basic Auger Kit has virtually everything you need in one place for obtaining soil samples. It includes all the tools necessary to get down to your required sampling depth with ease under a variety of soil conditions.

Three augers (one each regular, sand and mud), extensions, a core sampler, slide hammer, cross handle and accessories are conveniently packaged in a deluxe carrying case.

Further Information

With 3-1/4" (82.5 mm) augers and 2" x 6" (50.8 x 152.4 mm) core sampler.

Specification

Augers	Tungsten carbide coated high carbon bits.
Core Sampler	Standard type with slide hammer.
Extensions	Threaded (5/8" thread); 4 ft. (1.2 m) l; three included.
Components	Cross handle, cleaning brush, wrenches.
Weight	60 lbs. (27 kg).

Alternatives



Dutch Auger

Code: [23-1386](#)



ELE Hand Auger

Code: [23-1400](#)



Mud Auger

Code: [23-1382](#)



Oakfield Soil Sampling Kit

Code: [23-1410](#)



Regular Auger

Code: [23-1380](#)



Sand Auger

Code: [23-1384](#)



Vicat Apparatus

Code: [38-2012](#)

Product Group: [Vicat Apparatus](#)

Includes Vicat needle and mould.

Standards

ASTM C91, ASTM C187, ASTM C191, AASHTO T129, AASHTO T131

Specification

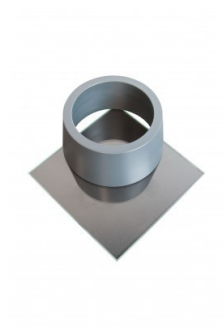
Plunger	Reversible; 10 mm diam. at one end and 1 mm diam. needle at other end; combined weight 300 grams.
Needle	Steel; mounted in plunger; 1 mm diam. x 50 mm long.
Scale	Graduated in millimeters.
Mold	Hard rubber; 70 mm base diam. x 60 mm top diam. x 40 mm h.
Weight	Net 4 lbs. (1.8 kg).

Accessories

ASTM Initial Set Needle

Code: [38-2620](#)





ASTM Vicat Mould

Code: [38-2660](#)



Water Bath - 18 litres

Code: [82-8600/01](#)

Product Group: [Water Baths](#)

Further Information

****NOT AVAILABLE FOR SALE IN THE USA****

Specification

Capacity	18 litres
Working area	390 x 300 mm
Tray	Yes
Max Water Depth	131 mm
Controller	Digital
Temperature range and stability °C	1 to 99.9 ± 0.1
Electrical supply	221 – 240 V AC, 50 - 60 Hz, 1 ph
Rated power kW	1.6
Weight	9.2 kg



ELE Flame Photometer

Code: [38-0200/01](#)

Product Group: [ELE Flame Photometer](#)

Special Note: The Flame Photometer requires a source of moisture-free air at 6 litres/minute at a pressure of 1 kg/cm². It also requires a fuel source for the flame and a regulator (see accessories).

Standards

EN 196-21, ASTM C114, TEST 17

Further Information

****NOT AVAILABLE FOR SALE IN THE USA****

For 220-240 V AC, 50-60 Hz, 1 ph

Specification

Dimensions (l x w x h)	420 x 360 x 300 mm
Readout	LED three 12.5 mm digits
Sensitivity Na	3 to 100 ppm
K	3 to 100 ppm
Ca	5 to 100 ppm (optional filter)
Reproducibility	1% CV for 20 consecutive samples using 10 ppm, set to read 100
Recorder Output	Nominal 1.00 V for a reading of 100.0
Weight	8 kg

Accessories



Air Compressor

Code: [38-0320/01](#)



Barium Filter

Code: 38-0260



Calcium Filter

Code: 38-0250



Regulators for Natural Gas

Code: 38-0270



Regulators for Propane Gas

Code: 38-0280



Muffle Furnace

Code: 83-4170/01

Product Group: [Furnaces](#), [Loss-on-Ignition](#),
[Loss-on-Ignition](#)

The unique design of oven door for safe and easy operation to ensure that the high-temperature hot gas will not escape from inside the oven.

Inert gas inlet and outlet reserved in the chamber.

Micro-computer PID controller: easy operation, accurate, reliable and safe control.

Inside lining of fire-door and box panel are both made of stainless steel materials and are corrosion-resistance and free deformation under high temperature.

Light chamber for durable service (refractory-brick chamber and ceramic-fiber chamber are optional).

With excellent door seal, thermal loss is minimised and temperature evenness is increased in the chamber.

Standards

EN 196-2, EN 459-2, EN 13454-2, BS 1016-4, ISO 344, ISO 1171, ASTM D2361, ASTM D2795, ASTM D3714

Specification

Work chamber dimensions (l x w x h)	300 x 200 x 120 mm
Capacity	7 litres
Maximum temperature	1200 °C
Electrical supply	220 – 240 V AC, 50 - 60 Hz, 1 ph
Power supply	5000 KW
Weight	130 kg

Spares/Consumables



Controller, for use in 83-4170/01

Code: [83-4170/11](#)



Element heating for use in 83-4170

Code: [83-4170/14](#)



Element/Chamber complete, heating, for use in 83-4170/01

Code: [83-4170/12](#)



Refractory brick for 83-4170/01

Code: [83-4170/13](#)



Thermostat, KGrade, 370 long, dia 2.5, for 83-4170/01

Code: [83-4170/10](#)

Alternatives



Heat of Hydration Apparatus

Code: 38-4600/01



Heat of Hydration Apparatus

Code: 38-4600/06



Rotatest 1500

Code: 45-3810/01



Rotatest 3000

Code: 45-3815/01