



IF IT'S WORTH BUILDING, IT'S WORTH TESTING

Contents

www.ele.com
+44 (0) 01525 249 200



This wishlist was generated on 11/10/2017, and contains the following Products:

25-0660

Double Ring Infiltrrometer

514-440

Double Ring Infiltrrometer Kit.



Double Ring Infiltrator

Code: [25-0660](#)

Product Group: [Double Ring Infiltrator](#)

Standards

ASTM D3385

Specification

Rings

Aluminum; two included, 12" i.d. x 20" h. (305 x 508 mm) and 24" i.d. x 20" h. (610 x 508 mm).

Driving Cap

Aluminum; 1/2" (12.7 mm) thick; with centering pins.

Splash Guards

Neoprene; two included; 6" (152 mm) square.

Mariotte Tubes

Graduated; two included; 3,000 ml and 10,000 ml capacities.

Weight

Net 70 lbs. (31.7 kg); Shpg. 90 lbs. (40.8 kg).

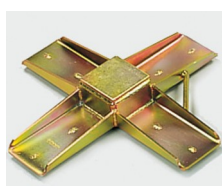
Accessories



Club hammer

Code: [29-5040](#)

Spares/Consumables



Driving Plate

Code: [514-446](#)

Alternatives



Double Ring Infiltrometer Kit.

Code: [514-440](#)



Double Ring Infiltrometer Kit.

Code: [514-440](#)

Product Group: [Permeability](#)

Used for the determination of infiltration capacity above the water table.

Allows synchronous determination of infiltration capacity in triplicate.

A comprehensive kit for the determination of soil infiltration capacity above the water table. The components are manufactured from high-quality materials for exhaustive field use.

514-440 kit comprises;

3 x double ring infiltrometers:

1x inner ring 280 mm, outer ring 530 mm diameter

1x inner ring 300 mm, outer ring 550 mm diameter

1x inner ring 320 mm, outer ring 570 mm diameter

Driving plate with handle for inner and outer rings

3 x adjustable measuring bridges

3 x floats with measuring rods

1 x nylon headed hammer

1 x stop watch, 0-30 sec x 0.1 sec accuracy

Specification

Maximum measuring depth	0 cm
Measured parameters	infiltration ratio
Reading accuracy	1 mm
Registration type	manual
Package size	65 x 65 x 50 cm
Weight	50 kg

Accessories

Product Sheet

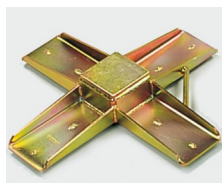
www.ele.com
+44 (0) 01525 249 200



Club hammer

Code: [29-5040](#)

Spares/Consumables



Driving Plate

Code: [514-446](#)



Soft Headed Mallet.

Code: [29-5020](#)



Stopwatch

Code: [81-0521](#)

Alternatives



Double Ring Infiltrrometer

Code: [25-0660](#)