



IF IT'S WORTH BUILDING, IT'S WORTH TESTING

This wishlist was generated on 17/10/2017, and contains the following Products:

---

25-3605

**Unconfined Compression Tester, Hand-Operated**

---

25-3518/01

**Digital Tritest 50 Load Frame**

---

26-2114/02

**Digital Direct/Residual Shear Apparatus Complete with Lever Loading Assembly. 110-120V 50/60Hz 1Ph.**

---

25-0580

**Constant Head Permeability Cell 75mm Diameter Specimen.**

---

25-0605

**Falling Head Permeability Cell.**

---

23-4090

**38mm Hand Operated Hydraulic Sample Extruder with Trimming Knife 38mm Split Former & Cutting Tool.**

---

23-3000

**Riffle Box 7mm Slot Width Complete with Three Containers.**

---

23-3100

**Riffle Box 19mm Slot Width Complete with Three Containers.**

---

23-3200

**Riffle Box 38mm Slot Width Complete with Three Containers.**

---

23-3500

**Rubber Headed Pestle.**

---

23-7150

**Soil Colour Chart Set**

---

24-0434

**Liquid Limit Device ASTM/ Aashto Hand-Operated W/ Revolution Counter. Supplied Less Grooving Tool.**

---

24-0417/01

**Motorised Liquid Limit Device W/ Counter BS 220-240V 50Hz 1Ph.**

---

24-0540

## Cone Penetrometer. Complete with Stainless Steel Test Cone.

---

2810E

### Plastic Limit Set

---

2820E

### Shrinkage Limit Set

---

24-1800

### Shrinkage Mould to BS 1377

---

24-9090/01

### Automatic Soil Compactor BS 220-240V 50Hz 1Ph.

---

24-9150/01

### Cbr-Test 50 Machine 50kN Capacity BS and ASTM Supplied with Stabilising Bar.

---

29-4100

### 150mm Sand Pouring Cylinder.

---

25-0402

### Consolidation Frame One Dimensional Consolidation Incremental Loading Device.

---

34-0450

### Apparatus for Determining Flow In Concrete (Flow Table).

---

34-6250/01

### Vibrating Table 600 X 400mm Table Top. 220-240V 50Hz 1Ph. Supplied with clamping assembly

---

34-6575/01

### Large Curing Tank C/W with Circulating Pump Heater/Thermostat Unit and Lower Rack

---

34-8100/09

### Buoyancy Balance

---

35-1500

### Advanced SilverSchmidt Concrete Test Hammer

---

35-4043

### Gwt Permeability Kit 0-6 bar range Supplied In a carrying case.

---

36-3090/01

**ADR Touch 2000 Standard Compression Machine with Digital Readout.**

---

38-6002

**10" Flow Table**

---

42-0600

**Set of Flakiness Sieves Comprising 1 Ea 4.9mm 7.2mm 10.2mm 14.4mm  
19.7mm 26.3mm and 33.9mm**

---

78-5456/01

**Electronic Balance - 4600 g x 0.01 g**

---

78-5457/01

**Electronic Balance - 8 000 g x 0.1 g**

---

78-5477/01

**Electronic Balance - 16 000 g x 0.5 g**

---

78-5527/01

**Electronic Balance - 32 000 g x 1.0 g**

---

78-7090

**Harvard Trip Balance**

---

78-2950/01

**Hotplate**

---

80-0200/01

**ELE Sieve Shaker**

---



## Unconfined Compression Tester, Hand-Operated

Code: 25-3605

Product Group: Unconfined Compression Tester,  
Hand-Operated

6.6 kN load capacity.

## Standards

ASTM D2166, AASHTO T208

## Specification

Specimen Height	Up to 8" (203 mm).
Platens	3" (76 mm) diam.; with concentric grooves for centering specimen.
Proving Ring	Plated steel; complete with dial indicator and calibration charts in English and Metric units.
Strain Indicator	English: 1.0" range x 0.001" graduations. Metric: 25 mm range x 0.01 mm graduations.
Hand Crank	Two-piece; aluminum.
Base	One-piece; cast aluminum.
Crosshead	High-strength aluminum.
Dimensions	10-5/8" w. x 6-3/8" d. x 26-1/4" h. (270 x 162 x 667 mm).
Weight	Net 43 lbs. (19.5 kg).; Shpg. 58 lbs. (26.3 kg).

## Accessories



## Unconfined Compression Test Accessory Set, English

Code: [25-3997](#)

---



## Unconfined Compression Test Accessory Set, Metric

Code: [25-3998](#)

---

### Alternatives



## Unconfined Compression Test Accessory Set, English

Code: [25-3997](#)

---



## Unconfined Compression Test Accessory Set, Metric

Code: [25-3998](#)





## Digital Tritest 50 Load Frame

Code: 25-3518/01

Product Group: Digital Tritest 50 Load Frame, CBR Load Frames, Triaxial Load Frames

- Microprocessor control
- Large on-board LED screen display
- Direct entry via a touch sensitive keyboard
- Rapid approach and return to datum of platen
- Fully variable speed, 0.00001 to 9.99999 mm/min
- Samples up to 100 mm diameter

This 50 kN capacity machine, designed primarily for triaxial testing of soil specimens up to 100 mm diameter x 200 mm long, comprises a rigid twin column construction with an integral fully variable microprocessor controlled drive unit and LCD display with a touch sensitive keyboard. The machine is normally bench mounted for ease of installation and operation.

The use of a microprocessor controlled drive system and keyboard entry provides the Digital Tritest 50 with a wide variety of features which include pause and speed reset during test, RS 232C, operator programming of speed and control functions, self test diagnostics and many other features.

A robustly constructed steel case houses the motor drive system with careful attention being given to the prevention of ingress of water or grit. All operating controls are mounted on the front panel of the machine, which is angled and recessed to prevent physical and environmental damage.

## Standards

BS 1377-7, BS 1377-8, BS 1924-2, ASTM D1883, ASTM D2166, ASTM D2850, ASTM D4767, ASTM D7181, AASHTO T99, AASHTO T134, AASHTO T135, AASHTO T136, AASHTO T180, AASHTO T193, AASHTO T208, AASHTO T296, AASHTO T297

## Further Information

Complete with RS 232C interface.

## Specification

Capacity	50kN (11,200 lbf).
Speed Range	English mode: 0.000001 to 0.399999 in/min. Metric mode: 0.00001 to 9.99999 mm/min.
Rapid Approach Speed	1.0 in/min. (25 mm/min.).

# Product Sheet

www.ele.com  
+44 (0) 01525 249 200



Platen Travel	100mm (3.9"); limit switch protection.
Platen Diameter	133 mm (5.2")
Vertical Clearance	910 mm, (36 .8") maximum; 305mm, (12") minimum.
Horizontal Clearance	364mm, (15 .3").
Serial Interface	RS232C; programmable baud rate and protocol.
Overall Dimensions	500 x 500 x 1,470 mm, (19.7" w. x 19.7" d. x 57.8" h).
Weight	Net 100kg (220 lbs); Shpg. 136kg (300 lbs).

## Accessories



### 50kN Clamped Boss Load Ring

Code: [78-0860](#)



### Adaptor kit, to perform CBR on the Tritest 50 load frame

Code: [25-3518/10](#)



### Clamped Boss Load Ring - 10.0 kN

Code: [78-0460](#)



### Clamped Boss Load Ring - 28.0 kN

Code: [78-0760](#)





## Clamped Boss Load Ring - 3.0 kN

Code: [78-0160](#)

---



## Clamped Boss Load Ring - 4.5 kN

Code: [78-0260](#)

---

## Alternatives



## MultiPlex 50 Load Frame

Code: [25-3700/01](#)

---



## Versa-Loader

Code: [25-3525/02](#)



## Digital Direct/Residual Shear Apparatus Complete with Lever Loading Assembly. 110-120V 50/60Hz 1Ph.

Code: 26-2114/02

Product Group: Direct/Residual Shear Apparatus,  
Direct/Residual Shear Apparatus

- Microprocessor control
- Large on-board LCD screen display
- Direct entry via touch sensitive keyboard
- Rapid approach and return to start datum
- Fully variable speed, 0.00001 to 9.99999 mm/minute
- Accepts specimens up to 100 mm square

The ELE Direct Shear Apparatus accepts specimens 60 mm, 100 mm square or 2.5 inches in diameter. The use of a microprocessor controlled drive system and keyboard entry gives the apparatus a wide range of features that include pause and speed reset during test, RS 232C interface, operator programming of speed and control functions, self test diagnostics and many other features. A return to start datum provides a positive means of reversing the shearbox when either preparing for a new test or continuing with residual testing procedures.

Safety forward/reverse travel limit switches are fitted as standard and monitored through the electronics system control.

The electronics are housed in a modern moulded shroud, which includes a large LCD display and keyboard entry. The apparatus is enclosed in a robustly constructed case, has been designed for floor mounting and is supplied complete with carriage, loading hanger and 10:1 lever loading device

## Standards

ASTM D3080, AASHTO T236

## Further Information

for 110 - 120 V AC, 50 - 60 Hz, 1 ph.

## Specification

Sample Size

Accepts either 2.42", 2.5" diam.; 60 mm square samples using accessory shear box assemblies, not included.

Speed Range

Variable in either English or Metric units between

Shear Force	0.000001"
Vertical Load	(0.00001 mm) to 0.399999" (9.99999 mm) per minute.
Dimensions	1,100lbf. (5.0 kN) maximum. 2,200 lbf. (10.0 kN) using 10:1 lever ratio.
Amps	44.7" l. x 12 .6" w. x 49.6" h. (1,135 x 320 x 1,260 mm).
Watts	1.6
Weight	26
	Net 181 lbs. (82 kg).

## Accessories



### Clamped Boss Load Ring - 2.0 kN

Code: [78-0060](#)



### Clamped Boss Load Ring - 3.0 kN

Code: [78-0160](#)



### Clamped Boss Load Ring - 4.5 kN

Code: [78-0260](#)



### Dial Gauge 10mm Travel X 0.002mm Divisions.

Code: [25-0440](#)



## Digital Proving Ring, 1,000 lbs (4.5 kN)

Code: [78-0264](#)



## Digital Proving Ring, 450 lbs (2.0 kN)

Code: [78-0064](#)



## Mechanical Dial Indicator - 25 mm Range Clockwise Movement

Code: [88-4110](#)



## S-Type Load Cell 5 kN.for Triaxial Tests. Fitted with 5 Pin Din Plug.

Code: [27-1551](#)



## Set of Weights 50 kg Slotted.

Code: [26-2132](#)



## Shear Box Assembly 100mm Sq.

Code: [26-2197](#)



## Shear Box Assembly 2.5 Inch Diameter

Code: [26-2213](#)



## Shear Box Assembly 60mm Sq.

Code: [26-2181](#)



## Vertical Displacement Transducer Assembly 15mm Travel with 5 Pin Din Plug Bracket for Shear Box

Code: [27-1689](#)



## Weight Set A

Code: [25-0535](#)



## Weight Set B

Code: [25-0537](#)

## Spares/Consumables



## Dial Indicator - 1.0" Range

Code: [88-4100](#)



## Electronic Digital Indicator, 0.600"/15 mm range

Code: [88-4210](#)



## Vertical Dial Indicator, English

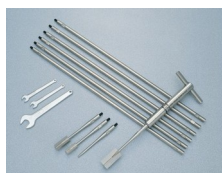
Code: [25-0445](#)

## Alternatives



## Digital Direct/Residual Shear Apparatus Complete with Lever Loading Assembly. 220-240V 50/60Hz 1Ph.

Code: [26-2114/01](#)



## H60 Field Inspection Vane Tester 0-200Kpa In Carrying Case. includes calibration and certificates.

Code: [26-3335](#)





## Hand Vane Tester

Code: [26-3346](#)

---



## Laboratory Vane Apparatus with 4 Springs and 12.7mm Vane; Hand Operated.

Code: [26-2270](#)

---



## Pocket Shearmeter with 3 Vanes 0 to 1Kgf/Cm2 X 0.5Kgf/Cm2.

Code: [26-2261](#)



## Constant Head Permeability Cell 75mm Diameter Specimen.

Code: [25-0580](#)

Product Group: [Constant Head Apparatus](#)

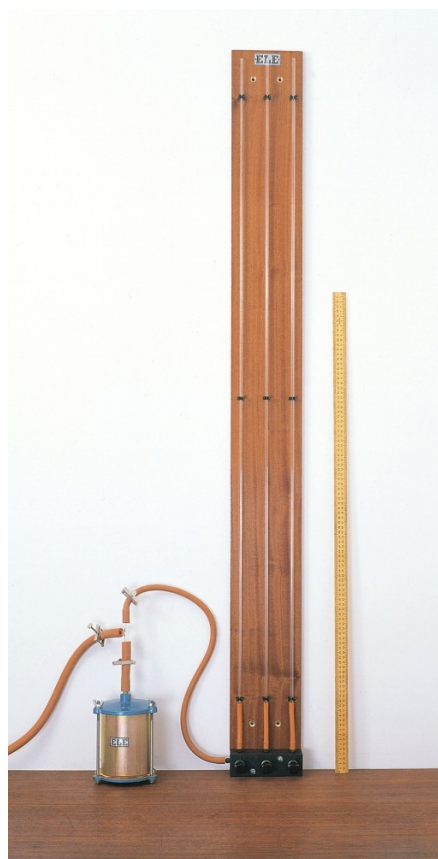
75 mm Diameter

## Standards

BS 1377-5

## Specification

Nominal Cell inside diameter	75 mm
Cell wall	Transparent plastic
Take-off points	3
End plates	Anodised aluminium
Weight kg	2.6



## Falling Head Permeability Cell.

Code: [25-0605](#)

Product Group: [Falling Head Apparatus](#)

## Specification

Cell	Plated seamless tube 100 mm diameter x 130 mm height
Base	Porous plate with three tie rods
Top plate	Machined to accept smaller tubes
Weight kg	3.4



## 38mm Hand Operated Hydraulic Sample Extruder with Trimming Knife 38mm Split Former & Cutting Tool.

Code: [23-4090](#)

Product Group: [Soil Extruders](#)

This Sample Extruder comprises a vertically mounted lever action hydraulic jack, with the body extended to form a chamber which accommodates a 38 mm diameter sample tube. Supplied complete with trimming knife, 38 mm split former and wire saw.

**Standards**  
BS 1377-1

## Alternatives



### Cbr/Core Cutter Extruder Frame and Hydraulic Jack Extrudes 150mm/6 Inch Diameter Specimens.

Code: [23-4250](#)



### Proctor/Core Cutter Extruder Frame and Hydraulic Jack. Extrudes 100mm/4 Inch Diameter Specimens

Code: [23-4200](#)



## Riffle Box 7mm Slot Width Complete with Three Containers.

Code: [23-3000](#)

Product Group: [Riffle Boxes \(Sample Dividers\)](#)

Manufactured from heavy-gauge sheet metal. BS recommended maximum particle size of 4.5 mm. EN recommended maximum particle size of 3.5 mm. Includes 12 slots each with a 7 mm slot width and an overall approximate capacity of 0.3 litres.

## Standards

BS 1377, BS 1924, BS 812, EN 932-1

## Specification

Recommended max particle size BS	4.5
Recommended max particle size EN	3.5
Slot width mm	7
No. of slots	12
Approx. capacity kg	0.3
Weight kg	1.5

## Alternatives



## Riffle Box 13mm Slot Width Complete with Three Containers.

Code: [23-3050](#)



## Riffle Box 15mm Slot Width Complete with Three Containers.

Code: [23-3070](#)



## Riffle Box 19mm Slot Width Complete with Three Containers.

Code: [23-3100](#)



## Riffle Box 25mm Slot Width Complete with Three Containers.

Code: [23-3150](#)



## Riffle Box 30mm Slot Width Complete with Three Containers.

Code: [23-3170](#)



## Riffle Box 38mm Slot Width Complete with Three Containers.

Code: [23-3200](#)



## Riffle Box 50mm Slot Width Complete with Three Containers.

Code: [23-3300](#)



## Riffle Box 64mm Slot Width Complete with Three Containers.

Code: [23-3350](#)





## Riffle Box 19mm Slot Width Complete with Three Containers.

Code: [23-3100](#)

Product Group: [Riffle Boxes \(Sample Dividers\)](#)

Manufactured from heavy-gauge sheet metal. BS recommended maximum particle size of 12.5 mm. EN recommended maximum particle size of 9.5 mm. Includes 10 slots each with a 19 mm slot width and an overall approximate capacity of 4 litres.

## Standards

BS 1377, BS 1924, BS 812, EN 932-1

## Specification

Recommended max particle size BS	12.5
Recommended max particle size EN	9.5
Slot width mm	19
No. of slots	10
Approx. capacity kg	4
Weight kg	9

## Alternatives



## Riffle Box 13mm Slot Width Complete with Three Containers.

Code: [23-3050](#)



## Riffle Box 15mm Slot Width Complete with Three Containers.

Code: [23-3070](#)



## Riffle Box 25mm Slot Width Complete with Three Containers.

Code: [23-3150](#)



## Riffle Box 30mm Slot Width Complete with Three Containers.

Code: [23-3170](#)



## Riffle Box 38mm Slot Width Complete with Three Containers.

Code: [23-3200](#)



## Riffle Box 50mm Slot Width Complete with Three Containers.

Code: [23-3300](#)



## Riffle Box 64mm Slot Width Complete with Three Containers.

Code: [23-3350](#)



## Riffle Box 7mm Slot Width Complete with Three Containers.

Code: [23-3000](#)



## Riffle Box 38mm Slot Width Complete with Three Containers.

Code: [23-3200](#)

Product Group: [Riffle Boxes \(Sample Dividers\)](#)

Manufactured from heavy-gauge sheet metal. BS recommended maximum particle size of 25 mm. EN recommended maximum particle size of 19 mm. Includes 8 slots each with a 38 mm slot width and an overall approximate capacity of 11 litres.

## Standards

BS 1377, BS 1924, BS 812, EN 932-1

## Specification

Recommended max particle size BS	25
Recommended max particle size EN	19
Slot width mm	38
No. of slots	8
Approx. capacity kg	11
Weight kg	17.5

## Alternatives



## Riffle Box 13mm Slot Width Complete with Three Containers.

Code: [23-3050](#)



## Riffle Box 15mm Slot Width Complete with Three Containers.

Code: [23-3070](#)



## Riffle Box 19mm Slot Width Complete with Three Containers.

Code: [23-3100](#)



## Riffle Box 25mm Slot Width Complete with Three Containers.

Code: [23-3150](#)



## Riffle Box 30mm Slot Width Complete with Three Containers.

Code: [23-3170](#)



## Riffle Box 50mm Slot Width Complete with Three Containers.

Code: [23-3300](#)



## Riffle Box 64mm Slot Width Complete with Three Containers.

Code: [23-3350](#)



## Riffle Box 7mm Slot Width Complete with Three Containers.

Code: [23-3000](#)



## Rubber Headed Pestle.

Code: [23-3500](#)

Product Group: [Sample Reduction](#)

Specially made for gently grinding soils without breaking the individual particles. Suitable for BS 1377, 1924; ASTM D421; AASHTO T87.

## Standards

BS 1377, BS 1924, ASTM D421, AASHTO T87

## Alternatives



## Mortar and Pestle Porcelain.

Code: [23-3505](#)



## Soil Colour Chart Set

Code: **23-7150**

Product Group: **Soil Colour Charts, Soil Color Charts**

The Munsell Soil Color Charts is an affordable way to evaluate the type of soil that is present within a given area. The book is set up to allow users to make soil color evaluations in the field quickly and easily. The soil classification system that has been developed around the Munsell color system is an established and accepted process to assign a soil type. This classification system has been used in the United States for more than 55 years to aid in the management and stewardship of natural resources. Through the use of the Munsell Soil Color Charts, practitioners from a wide range of professions can share reliable and consistent information about the color of soils at a particular site with colleagues anywhere around the world. The Munsell Soil Color Charts are used by a variety of industries and professions such as universities and high schools, forestry, forensics, environmental and soil science, building and contracting, landscaping, real estate, health departments, geology and archaeology.

## Further Information

The following pages are included in the Munsell Soil Color Charts:

- Munsell 10R Soil Chart
- Munsell 10YR Soil Chart
- Munsell 2.5Y Soil Chart
- Munsell 2.5YR Soil Chart
- Munsell 5Y Soil Chart
- Munsell 5YR Soil Chart
- Munsell 7.5YR Soil
- 10Y - 5GY Colors - Olive greens Soil Chart
- Gley 1 & 2 (2 - Separate Charts) Soil Charts
- Munsell 5R Individual Soil Chart
- Munsell 7.5R Individual Soil Chart
- "New" White Page, 7.5R, 10YR, & 2.5Y

## Specification

Munsell Book of Soil Color Charts

Durable binder contains 440 Munsell Color Standards

- Featuring ISCC-NBS color names
- Munsell alpha-numeric notation



Color produced on water resistant substrate

Features Munsell notations for each color providing:

- Value (degree of lightness)
- Hue (color)
- Chroma (degree of saturation)

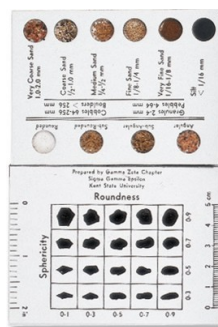
Used with medium, fine-grained, and coarse-grained rocks

Pages are cleanable and can be exposed to standard environmental conditions in the field

Dimensions

- Binder Size 150 mm x 196 mm x 25 mm
- Page Size 111 mm x 184 mm
- Weight 0.9 kg

## Alternatives



## Sand Grading Chart

Code: [23-7130](#)



## Liquid Limit Device ASTM/ Aashto Hand-Operated W/ Revolution Counter. Supplied Less Grooving Tool.

Code: [24-0434](#)

Product Group: [Casagrande Method](#)

Complete with revolution counter. Supplied less grooving tool.

## Standards

ASTM D4318, AASHTO T89

## Accessories



### ASTM Metal Grooving Tool.

Code: [24-0453](#)



### Casagrande Grooving Tool Aashto

Code: [24-0461](#)



## Motorised Liquid Limit Device W/ Counter BS 220-240V 50Hz 1Ph.

Code: [24-0417/01](#)

Product Group: [Casagrande Method](#)

Complete with revolution counter and motor.

## Standards

BS 1377-2

## Accessories



### Glass Plate.

Code: [24-0430](#)



## Grooving Tool and Gauge B.S.

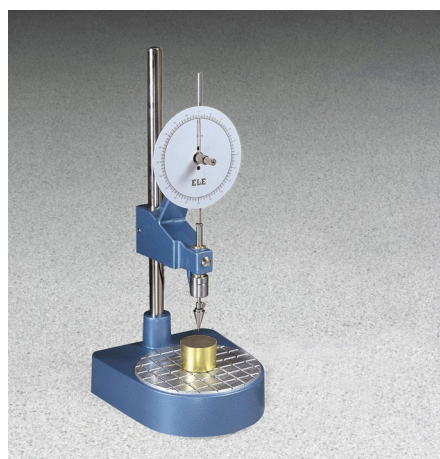
Code: [24-0425](#)

## Alternatives



## Liquid Limit Device BS with Counter. C/W Metal Grooving Tool & Test Gauge.

Code: [24-0410](#)



## Cone Penetrometer. Complete with Stainless Steel Test Cone.

Code: [24-0540](#)

Product Group: [Cone Penetrometer Method](#), [Cone Penetrometer](#)

Bench mounted apparatus to determine the liquid limit of soils BS1377. This method is applicable to a wide range of soils. The apparatus is fitted with a 150mm diameter dial indicator for direct reading of penetration. Supplied complete with 30deg, 30mm long test cone. Manufactured from stainless steel and includes adjustable levelling feet.

## Standards

BS 1377-2

## Specification

Dial Indicator	150 mm diameter graduated in 400 x 0.1 mm divisions, indicator point incorporates friction/gear system
Height Adjustment	Rapid, using integral clamping mechanism
Cone release	Manual
Cone	1 x 30°, 35 mm test cone included
Base	Cast aluminium, adjustable levelling feet
Weight kg	7

## Accessories



### Penetration Test Cup.

Code: [24-0548](#)



## Test Gauge for Checking Condition of Cone Point.

Code: [24-0546](#)

---

## Spares/Consumables



## Penetration Test Cone

Code: [24-0544](#)

---

## Alternatives



## Semi-Automatic Cone Penetrometer

Code: [24-0545/01](#)



## Plastic Limit Set

Code: [2810E](#)

Product Group: [Plastic Limit Set](#)

Set includes:

- 1 Plastic Limit Plate (24-0810) 12" x 12" x 3/8".
- 1 25 ml Graduated Cylinder (88-6002A).
- 1 Mixing Dish (88-6710).
- 1 Doz. Aluminum Moisture Cans (88-7002).
- 1 Flexible Spatula (88-7500).
- 1 Rod Comparator (24-0811).

## Standards

ASTM D4318, AASHTO T90





## Shrinkage Limit Set

Code: 2820E

Product Group: Shrinkage Limit Set

Set includes:

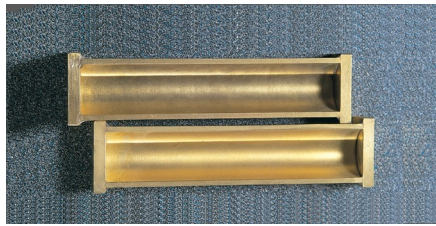
- 1 Monel Shrinkage Dish (24-1550).
- 1 Crystallizing Dish (24-1600).
- 1 Shrinkage Prong Plate (24-1500).
- 1 25 ml Graduated Cylinder (88-6002A).
- 1 Evaporating Dish (88-6714).

## Standards

ASTM D427, AASHTO T92

## Further Information

Three pounds of mercury and other accessories required for shrinkage limit test; not included



## Shrinkage Mould to BS 1377

Code: [24-1800](#)

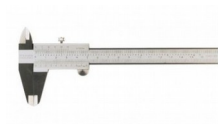
Product Group: [Linear Shrinkage](#)

To produce a specimen 140 mm long x 12.5 mm radius.

## Standards

BS 1377

## Accessories



## Vernier Caliper Range 0 to 200mm X 0.02mm.

Code: [81-0588](#)



## Automatic Soil Compactor BS 220-240V 50Hz 1Ph.

Code: [24-9090/01](#)

Product Group: [Automatic Compactors](#)

Preset blow pattern ensures an even compaction, includes solid state controls for reliability and maintenance. An automatic digital counter resets to zero on the completion of a test. An selectable rammer with a drop height of 300-450mm, a selectable rammer weight of 2.5 or 4-5kg. A preset number of blows per layer can be set by thumb wheel control. A compaction rate of approximately 26 blows per minute. Accepts BS Standard Compaction and CBR moulds; also meets the requirements of BS1377. Voltage 220-240V 50hz 1ph.

## Standards

BS 1377, EN 13286-2, EN 13286-47

## Specification

Dimensions (l x w x h)	430 x 240 x 1400 mm
Rammer BS/EN	Circular faced, 50 mm dia, selectable to 2.5 kg or 4.5 kg weight.
Rammer ASTM	Circular faced, 2 in (50.8 mm) dia, selectable to 5.5 lb (2.5 kg) or 10 lb (4.5 kg) weight.
Drop BS/EN	Adjustable to 300 mm or 450 mm
Drop ASTM	Adjustable to 12 in (305 mm) or 18 in (457 mm)
Weight kg	150

## Accessories



## BS Cbr Mould Body.

Code: [24-9198](#)



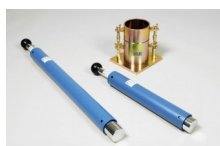
## BS Extension Collar

Code: [24-9200](#)



## BS Solid Base or Top Plate

Code: [24-9204](#)



## BS Standard Compaction Mould 1000Cm Capacity.

Code: [24-9000](#)

## Alternatives



## Automatic Soil Compactor BS 220-240V 60Hz 1Ph.

Code: [24-9090/06](#)



## Cbr-Test 50 Machine 50kN Capacity BS and ASTM Supplied with Stabilising Bar.

Code: [24-9150/01](#)

Product Group: [CBR Load Frames](#)

- Single speed machine (BS/EN and ASTM)
- Rapid platen adjustment
- Complete with stabilising bar
- Compact, bench-mounting design
- Options for mechanical or electronic measurement

Designed for performing laboratory CBR tests to BS 1377, EN13286-47 and ASTM D1883, this bench mounting machine comprises a twin column frame incorporating a motorised drive system. Rapid adjustment of the platen is provided, which enables daylight to be taken up quickly and also close control of application of a seating load.

## Standards

BS 1377, BS 1924, EN 13286-47, ASTM D1883, AASHTO T193

## Specification

Dimensions (l x w x h)	550 x 400 x 1220 mm
Max vertical clearance	800 mm
Horizontal clearance	255 mm
Platen diameter	133 mm
Platen travel	105 mm
Weight kg	80

## Accessories



### 50kN Clamped Boss Load Ring

Code: [78-0860](#)



### 50kN S-type Load Cell

Code: [27-1559](#)



## ASTM Cbr Mould Complete with Collar & Perforated Base

Code: [24-9228](#)

---



## BS Cbr Mould Body.

Code: [24-9198](#)

---



## BS Extension Collar

Code: [24-9200](#)

---



## BS Solid Base or Top Plate

Code: [24-9204](#)

---



## Cbr Penetration Piston (Adjustable).

Code: [24-9183](#)

---



## CBR Penetration Transducer 50mm Travel Fitted with 5 Pin Din Plug.

Code: [27-1705](#)



## Clamped Boss Load Ring - 10.0 kN

Code: [78-0460](#)



## Clamped Boss Load Ring - 2.0 kN

Code: [78-0060](#)



## Clamped Boss Load Ring - 28.0 kN

Code: [78-0760](#)



## Penetration Dial Gauge BS

Code: [24-9186](#)





## Penetration Piston

Code: [24-9182](#)



## Penetration/Swell Dial Gauge ASTM.

Code: [24-9184](#)

## Alternatives



## CBR-Test 50 Machine 50 kN Capacity BS and ASTM Supplied with Stabilising Bar.

Code: [24-9150/02](#)



## Cbr-Test 50 Machine 50kN Capacity BS and ASTM Supplied with Stabilising Bar.

Code: [24-9150/01](#)



## Cbr-Test 50 Machine 50kN Capacity BS and ASTM Supplied with Stabilising Bar.

Code: [24-9150/06](#)



## MultiPlex 50 Load Frame

Code: [25-3700/01](#)



## 150mm Sand Pouring Cylinder.

Code: [29-4100](#)

Product Group: [Sand Replacement](#)

## Standards

BS 1377, BS 1924



## Consolidation Frame One Dimensional Consolidation Incremental Loading Device.

Code: 25-0402

Product Group: Consolidation Apparatus, Table Top Consolidation Apparatus

- High capacity - 8800 kPa on 50 mm diameter specimens using 11:1 beam ratio
- Triple beam ratio, 9:1, 10:1, 11:1
- Compact unit ensures maximum space saving

The ELE Oedometer is rigidly constructed to ensure minimum frame distortion. The frame is designed to load the specimen through a yoke assembly and one of three alternative beam ratios. The beam is fitted with a counterbalance weight and beam support jack. The cell platform will accept the complete range of ELE consolidation cells and is fitted with a central spigot to ensure accurate centring of the cell under the loading yoke. Dimensions without hanger 711 x 203 x 508 mm (l x w x h). Weight 22 kg.

## Standards

ASTM D2435, ASTM D4546, AASHTO T216, ASTM D3877, BS 1377-5

## Further Information

Supplied without dial gauge and weights.

## Specification

Load Capacity	48 tons/sq. ft. (5,148 kPa) on 2.5" (63 mm) diam. samples.
Loading Beam	Cast aluminum; counterbalanced; 9:1, 10:1 and 11:1 ratios.
Frame	Cast aluminum; integral beam support jack; plated steel and platform.
Dimensions	203 x 711 x 508 mm, (8" w. x 28" d. x 20" h) . excluding weight hanger.
Weight	(Net 30 lbs). 13.6 kg; Shpg. 40 lbs. (18.1 kg).

## Accessories



## 16 Ton Weight Set

Code: [25-0544](#)



## 2.416" Fixed Ring Consolidometer

Code: [25-0480](#)



## 2.5" Floating Ring Consolidometer

Code: [25-0530](#)



## Consolidation Cell Complete 2.5 Inch Diameter Sample. Inc. Porous Discs and Cutting Ring.

Code: [25-0479](#)



## Consolidation Cell Complete 50mm Diameter Sample.

Code: [25-0455](#)



## Consolidation Cell/ Oedometer Complete 75mm Diameter Sample

Code: [25-0503](#)



## Floor Mounting Stand.

Code: [25-0429](#)



## Mechanical Dial Indicator - 0.4" Range

Code: [88-4070](#)



## Mechanical Dial Indicator - 1.0" Range Counter Clockwise Movement

Code: [88-4120](#)



## Mechanical Dial Indicator - 10 mm Range

Code: [88-4080](#)



## Mechanical Dial Indicator - 25 mm Range Counter Clockwise Movement

Code: [88-4130](#)



## Set of Weights 100Kg Total Weight.

Code: [25-0408](#)



## Weight Set A

Code: [25-0535](#)



## Weight Set B

Code: [25-0537](#)

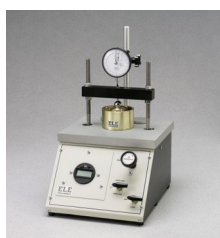
## Spares/Consumables



## Electronic Digital Indicator, 0.600"/15 mm range

Code: [88-4210](#)

## Alternatives



## Pneumatic Consolidation Apparatus

Code: [25-0560](#)





## Apparatus for Determining Flow In Concrete (Flow Table).

Code: [34-0450](#)

Product Group: [Flow Table](#)

Comprising of mould, flow table, tamper, metre rule, float and stopwatch

## Standards

EN 12350-5

## Further Information

**\*\*NOT AVAILABLE FOR SALE IN THE USA\*\***

## Accessories



## Aluminium Scoop Large

Code: [81-0220](#)



## Compacting Bar 25mm Sq X 380mm

Code: [34-2910](#)



## Sample Tray - 1200 x 1160 x 50 mm

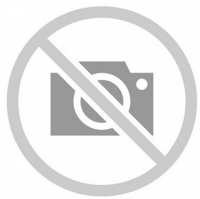
Code: [81-4230](#)



## Shovel - With flat blade

Code: [81-0240](#)

## Spares/Consumables



## Stopwatch

Code: [81-0521](#)



## Vibrating Table 600 X 400mm Table Top. 220-240V 50Hz 1Ph. Supplied with clamping assembly

Code: 34-6250/01

Product Group: Vibrating Table

Vibrating table mounted on a steel stand, supplied  
with clamp assembly.

## Standards

EN 12390-2, EN 12350-6, EN 12350-7

## Further Information

**\*\*NOT AVAILABLE FOR SALE IN THE USA\*\***

3000 cycles per minute. For 220 - 240 V AC, 50 Hz, 1 ph.

## Specification

Dimensions (table top)	600 x 400 mm
Maximum no. Cube moulds	2 x 150 mm <sup>2</sup>
Clamp Assembly	Single
Weight	60 kg

## Accessories



## Compacting Bar 25mm Sq X 380mm

Code: 34-2910



## Wire Brush

Code: 81-0705

---

## Alternatives



## 100 X 100 X 500mm Beam Mould.

Code: 34-5003



## 100mm Cube Mould 2-Part Clamp Type. Cast Iron Construction. BS EN Compliant.

Code: 34-4650



## 100mm Cube Mould 4-Part Clamp Type. Cast Iron Construction. BS EN Compliant.

Code: 34-4520



## 100mm Dia Cylinder Mould 200mm Long.

Code: 34-5210



## 150 X 150 X 750mm Beam Mould.

Code: 34-5053



## 150mm Cube Mould 2-Part Clamp Type. Cast Iron Construction. BS EN Compliant.

Code: 34-4670



## 150mm Cube Mould 4-Part Clamp Type. Cast Iron Construction. BS EN Compliant.

Code: 34-4570



## 150mm Dia Cylinder Mould 150mm Long.

Code: 34-5230



## 150mm Dia Cylinder Mould 300mm Long.

Code: 34-5260



**200mm Cube Mould Clamp Type. Cast Iron Construction.  
Stamped Mould Sections. EN Compliant.**

Code: [34-4620](#)



## Large Curing Tank C/W with Circulating Pump Heater/Thermostat Unit and Lower Rack

Code: [34-6575/01](#)

Product Group: [Expansion \(swell\) Test Equipment, Large Curing Tank](#)

This Large Curing Tank is supplied complete with a submersible pump, immersion heater/thermostat unit and separate control panel. The tank includes a lower rack as standard and is designed to maintain the temperature at  $20 \pm 2^\circ\text{C}$ , providing that the ambient temperature does not fall below  $15^\circ\text{C}$  or rise above  $20^\circ\text{C}$ .

## Standards

EN 12390-2, ASTM C31, AASHTO T23

## Further Information

**\*\*NOT AVAILABLE FOR SALE IN THE USA\*\***

Supplied as specified. For 220 - 240 V AC, 50 - 60 Hz, 1 ph.

## Specification

Internal Dimensions	1040 x 1040 x 605 mm (l x w x h)
Capacity	650 litres
Rated Power	2000 watt
Weight	60 kg

## Accessories



### Maximum and Minimum Thermometer

Code: [82-5310](#)

## Alternatives





## Jolting Table 220 - 240 V AC 60 Hz

Code: [39-1150/06](#)



## Buoyancy Balance

Code: [34-8100/09](#)

Product Group: [Hardened Concrete - Buoyancy Balance, Percentage Refusal Density \(PRD\)](#)

## Standards

EN 12697-32, EN 13280-4, BS 598-104

## Further Information

**\*\*NOT AVAILABLE FOR SALE IN THE USA\*\***

## Accessories



### Cradle

Code: [34-8105](#)



## Advanced SilverSchmidt Concrete Test Hammer

Code: 35-1500

Product Group: Surface Hardness

The SilverSchmidt ST/PC is the first integrated concrete test hammer featuring true rebound value and unmatched repeatability.

Two factors contribute to the improved performance of this concrete test hammer over its predecessors:

- Velocity based detection of the rebound quotient
- The lightweight hybrid design of the impact plunger is made from aerospace alloy, matched to the elastic properties of the concrete and equipped with a hardness steel cap

Independent validation testing by BAM (Federal Institute for Materials Research and Testing, Germany) has shown the SilverSchmidt ST/PC to have less dispersion than the classical concrete test hammer over the entire range.

The unique design and high quality construction of the concrete test hammer SilverSchmidt ST/PC makes rebound hammer testing quicker and more accurate than ever before.

\*NOT AVAILABLE FOR SALE IN THE USA\*

## Further Information

- The SilverSchmidt ST/PC concrete test hammer combines a high measurement accuracy with an unmatched repeatability.
- The rebound value requires no angular correction
- The concrete test hammer offers customer conversion curves for a wide range of compressive concrete strengths, including low  $f_c$  ( $<10$  N/mm<sup>2</sup>, 1'450 psi) and high strength concrete (up to 100 N/mm<sup>2</sup>, 14'500 psi)
- A large number of measurement points can be easily collected by the concrete test hammer and automatically evaluated according to statistical data
- The concrete test hammer offers automatic conversion to the required measurement unit (MPa,

N/mm<sup>2</sup>, kg/cm<sup>2</sup>, psi)

---

## Specification

Technical Data	Silver Schmidt
Impact Energy	2.207 Nm
Hammer Mass	135 g
Spring Constant	0.79 N/mm
Spring Extension	75 mm (2.95")
Dimensions	55 x 55 x 255 mm (2.16" x 2.16" x 9.84")
Concrete Compressive Strengths	10-100 N/mm <sup>2</sup> (1450-14500 psi)
Weight	570 g (1.4 lb)



## Gwt Permeability Kit 0-6 bar range Supplied In a carrying case.

Code: [35-4043](#)

Product Group: [Permeability of Concrete](#)

The Water Permeability Test Kit is a portable unit capable of measuring in-situ permeability. It has a dual measuring range of 0 - 1.5 bar or 0 - 6 bar. Consisting of a sealed water reservoir and all necessary attachments, the unit is supplied complete in a carrying case. Dimensions 460 x 310 x 100 mm (l x w x h).

## Further Information

**\*\*NOT AVAILABLE FOR SALE IN THE USA\*\***



## ADR Touch 2000 Standard Compression Machine with Digital Readout.

Code: [36-3090/01](#)

Product Group: [General Purpose Compression Machines](#)

- 2000 kN/450 000 lbf capacity
- Tests 150 and 100 mm concrete cubes or cylinders up to 320 x 160 mm diameter
- Supplied with Windows(R) download software as standard.

Incorporating the ADR Touch digital readout, the machines are designed to test cubes and cylinders in accordance with most International Standards. Supplied fitted for cylinder testing with safety gates. When used for cube testing appropriate distance pieces according to the size of specimen to be tested are required and must be ordered separately.

## Further Information

**\*\*NOT AVAILABLE FOR SALE IN THE USA\*\***

The Standard range of compression machines has been designed to meet the need for a simple, economic and reliable means of testing concrete.

Whilst delivering all the features and reputation of the established ADR Series with its extensive design history, the new and improved user interface provides a high quality platform for testing that enhances the performance of ELE's compression machines.

New, sophisticated electronics further the benefits of simplified operation, whilst delivering the highest levels of accuracy in testing concrete and cement/mortar samples, satisfying the needs of Quality Control Managers, Lab Managers and Technicians.

### ACCURACY & SAVINGS

The new ADR Touch Series, with 145mm (5.7") high resolution QVGA touch screen interface and intuitive menu-driven operation, reduces the time taken to set up the machine and perform tests, reducing the time to train staff by up to 25%.

- Up to 6 sample types can be set as favorites, enabling one-touch set up for repeat testing.
- Full, QWERTY touch pad for input of test data.

Most testing errors produce lower strength results. Noncompliant loading rates can generate errors in measured strength. The user interface includes real-time display of load vs. time, further ensuring accurate and consistent test results and providing "goodness of test" data to improve traceability in your QC operations.

### TRACEABILITY & DATA QUALITY

The ADR range now provides improved data quality and traceability in due diligence cases - it is now possible to demonstrate traceability all the way from the machine/user to the accreditation body, increasing your reputation and peace of mind - all test results now come complete with the machine serial number attached.

- Enhanced USB data communications between PC and machine - eliminating the need for download software.
- Two gigabytes of storage memory.
- Full customization of sample sizes - stress calculations are automatically recalculated.

## USER SAFETY

With full safety gates as standard, total systems diagnostics, ram run-out switches and overload warnings ensure the safety of your employees and the reliability of your machine.

## Specification

Testing Standards	BS EN ISO 7500-1, ASTM E4
Capacity	2000 kN
Cubes (Concrete)	Up to 150 mm
Cylinders (Concrete)	Up to 160 x 320 mm
Blocks	n/a
Flexural Testing	Via Flexural Frame
TFV and ACV	Yes
Voltage Supply	220-240V 50/60 Hz 1Ph.
Frame Type	Welded
Max vert. Clearance	340 mm
Max hor. Clearance	325 mm
Platen Sizes	Lower, Upper 222 mm
Max Ram Travel	50 mm

## Accessories



### **100kN Flexural Fitting Kit (ADR) Used for Connecting Flexural Frames to ADR Compression Machines.**

Code: [37-6138](#)



### **2000 kN Capacity Calibration Load Cell with Hand-Held Readout & Calibrated to UKAS**

Code: [37-8315](#)





## ADR Touch Control Pro Head for Compression Machines

Code: [37-5951/09](#)

---



## Flexible Hose

Code: [5038B0027](#)

---



## Impact Printer Rs232 Serial Connection. Supplied Complete with 1 Paper Roll.

Code: [37-4859/01](#)

---



## Standard Distance Piece - 100 mm Depth

Code: [37-5100](#)

---



## Standard Distance Piece - 20 mm Depth

Code: [37-4980](#)

---



## Standard Distance Piece - 50 mm Depth

Code: [37-5000](#)



## Standard Distance Piece - 60 mm Depth

Code: [37-5020](#)



## Standard Distance Piece - 80 mm Depth

Code: [37-5050](#)

## Spares/Consumables



## Pressure transducer, 0-700bar, 0.05 to 10v DC Output

Code: [6014A0062](#)

## Alternatives



## ADR Touch 1500 Compression Machine with Digital Readout.

Code: [36-0720/01](#)



## 10" Flow Table

Code: [38-6002](#)

Product Group: [10" Flow Table](#)

Hand-operated, includes flow mold.

- Cast-bronze table for corrosion resistance and long life.
- Heavy-duty frame construction.
- Supplied complete with bronze flow mold.

## Standards

ASTM C87, ASTM C109, ASTM C185, ASTM C230, ASTM C243, ASTM C348, AASHTO T71, AASHTO T106, AASHTO T137

## Further Information

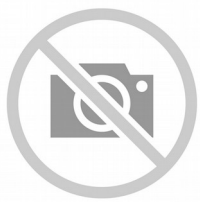
The Flow Table is designed in accordance with ASTM and AASHTO specifications for use in determining the flow of hydraulic cement mortars and cement pastes.

In operation the test specimen is molded on the table to a specified volume and shape. With the mold removed, the table is dropped a specified number of times. Upon completion of the test, the flow, (or increase in average diameter) is measured.

## Specification

Table	Cast-bronze; 10" (254 mm) diam.; combined weight with shaft, 9 lbs. $\pm 0.1$ lb. (4.1 $\pm 0.05$ kg).
Frame	Heavy-duty construction with cam; produces a 1/2" (12.7 mm) table drop.
Overall Dimensions	10" (254 mm) diam. x approx. 10" (254 mm) h.
Flow Mold	Machined bronze; 2-3/4" (69.8 mm) top i.d. x 4" (101.6 mm) base i.d. x 2" (50.8 mm) h.
Weight	Net 24.75 lbs. (11.2 kg).

## Accessories



## ASTM Calipers

Code: [38-6080](#)



## Flow Mould

Code: [38-6040](#)



## Set of Flakiness Sieves Comprising 1 Ea 4.9mm 7.2mm 10.2mm 14.4mm 19.7mm 26.3mm and 33.9mm

Code: [42-0600](#)

Product Group: [Flakiness Sieves and Gauges](#)

Comprising of 1 each, 4.9 mm, 7.2 mm, 10.2 mm,  
14.4 mm, 19.7 mm, 26.3 mm and 33.9 mm.

## Standards

BS 813

## Further Information

**\*\*NOT AVAILABLE FOR SALE IN THE USA\*\***

## Alternatives



## Length Gauge

Code: [42-0820](#)



## Electronic Balance - 4600 g x 0.01 g

Code: [78-5456/01](#)

Product Group: [Electronic Balances](#)

## Further Information

**\*\*Not available for sale in the USA\*\***

## Specification

Capacity resolution	4500 g x 0.01 g
Pan size	160 x 160 mm
Mains and battery	No
Dimensions (w x d x h)	220 x 310 x 90 mm
Weight	6 kg
Weighing units	g, kg, lb, lb:oz, oz, ozt, T, custom unit.
Repeatability	0.02 g
Power supply	100-240V, 50/60Hz, 1pH



## Electronic Balance - 8 000 g x 0.1 g

Code: [78-5457/01](#)

Product Group: [Electronic Balances](#)

## Further Information

**\*\*Not available for sale in the USA\*\***

## Specification

Capacity resolution	8000 g x 0.1 g
Pan size	225 x 275 mm
Mains and battery	Yes
Dimensions (w x d x h)	315 x 355 x 110 mm
Weight	4 kg
Weighing units	g, kg, lb, lb:oz, oz
Repeatability	0.1 g



## Electronic Balance - 16 000 g x 0.5 g

Code: [78-5477/01](#)

Product Group: [Electronic Balances](#)

## Further Information

**\*\*Not available for sale in the USA\*\***

## Specification

Capacity resolution	16000 g x 0.5 g
Pan size	225 x 300 mm
Mains and battery	Yes
Dimensions (l x w x h)	340 x 320 125 mm
Weight	4 kg





## Electronic Balance - 32 000 g x 1.0 g

Code: [78-5527/01](#)

Product Group: [Electronic Balances](#)

## Further Information

**\*\*Not available for sale in the USA\*\***

## Specification

Capacity resolution	32000 g x 1.0 g
Pan size	225 x 275 mm
Mains and battery	Yes
Dimensions (w x d x h)	315 x 355 x 110 mm
Weight	6 kg
Weighing units	g, kg, lb, lb:oz, oz
Repeatability	1 g
Power supply	230AC, 50/60Hz, 10 watts



## Harvard Trip Balance

Code: 78-7090

Product Group: Mechanical Balances, Harvard  
Mechanical Trip Balance

## Further Information

**\*\*Not available for sale in the USA\*\***

## Specification

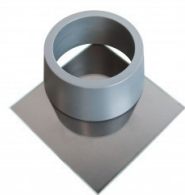
Capacity	2000 g
Resolution	0.1 g
Pan size (diameter)	2 x 150 mm
Overall dimensions (l x w x h)	152 x 356 x 254 mm
Weight	2.7 kg

## Accessories

### ASTM Initial Set Needle

Code: 38-2620





## ASTM Vicat Mould

Code: [38-2660](#)



## EN Initial and Final Set Needle

Code: [38-2110](#)



## Plastic Scoop and Counterweight

Code: [78-7130](#)



## Triple Beam Balance

Code: [78-7140](#)



## Weights for Harvard Trip Balance

Code: [78-7110](#)

## Spares/Consumables

### Consistency Plunger

Code: [38-2010/10](#)



## Alternatives

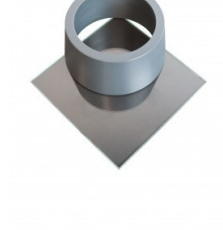
### ASTM Initial Set Needle

Code: [38-2620](#)



### ASTM Vicat Mould

Code: [38-2660](#)



### EN Initial and Final Set Needle

Code: [38-2110](#)





## Plastic Scoop and Counterweight

Code: [78-7130](#)



## Triple Beam Balance

Code: [78-7140](#)



## Weights for Harvard Trip Balance

Code: [78-7110](#)



## Hotplate

Code: 78-2950/01

Product Group: Hotplate

## Further Information

\*\*Not available for sale in the USA\*\*

## Specification

Construction	Cast-iron top and base ventilated sheet-steel body
Nominal diameter	200 mm
Maximum temperature	500°C
Rated power	2000 W
Weight	5 kg



## ELE Sieve Shaker

Code: [80-0200/01](#)

Product Group: [ELE Sieve Shaker](#)

The ELE sieve shaker is powered by an electromagnetic drive that has no rotating parts to wear making it maintenance free and extremely quiet in operation.

The unit features a triple Vertical-Lateral-Rotary vibrating action that moves the sample over the sieve producing faster more efficient sieving, while the rapid vertical movements also help keep the apertures from blinding.

The shaker is ideal for laboratory or on site use. It is robust, compact and sufficiently lightweight to be portable. The separate digital microprocessor controlled console unit incorporates a keypad for setting the sieving program and is isolated from any effects of vibration from the shaker.

As standard the shaker includes, timer 0-999 minutes, adjustable vibration intensity and adjustable intermittent or continuous operation.

## Further Information

**\*\*NOT AVAILABLE FOR SALE IN THE USA\*\***

The unit accepts up to ten 200 mm or 8 inch, full height, diameter sieves and lid and receiver, or up to six 300 mm or 12 inch diameter sieves and lid and receiver. Complete as specified. Dimensions (l x w x h) 380 x 440 x 1085 mm. For 220 - 240 V AC, 50 Hz 1ph.