



IF IT'S WORTH BUILDING, IT'S WORTH TESTING

Contents

www.ele.com
+44 (0) 01525 249 200



This wishlist was generated on 09/11/2017, and contains the following Products:

83-4170/01

Muffle Furnace

23-5800

Hand Operated Soil Lathe for 38mm Dia Specimens Up to 100mm Long.

29-3729

Pocket Penetrometer.

450-011

Water level indicator (dipmeter) with audio and light indicator 100 m

24-2854/01

Mechanical End-Over-End Shaker Ce

29-3800

Plate Bearing Apparatus Complete. 500kN Capacity

82-8020/01

Distilled Water Still



Muffle Furnace

Code: 83-4170/01

Product Group: Furnaces, Loss-on-Ignition,
Loss-on-Ignition

The unique design of oven door for safe and easy operation to ensure that the high-temperature hot gas will not escape from inside the oven.

Inert gas inlet and outlet reserved in the chamber.

Micro-computer PID controller: easy operation, accurate, reliable and safe control.

Inside lining of fire-door and box panel are both made of stainless steel materials and are corrosion-resistance and free deformation under high temperature.

Light chamber for durable service (refractory-brick chamber and ceramic-fiber chamber are optional).

With excellent door seal, thermal loss is minimised and temperature evenness is increased in the chamber.

Standards

EN 196-2, EN 459-2, EN 13454-2, BS 1016-4, ISO 344, ISO 1171, ASTM D2361, ASTM D2795, ASTM D3714

Specification

Work chamber dimensions (l x w x h)	300 x 200 x 120 mm
Capacity	7 litres
Maximum temperature	1200 °C
Electrical supply	220 – 240 V AC, 50 - 60 Hz, 1 ph
Power supply	5000 KW
Weight	130 kg

Spares/Consumables



Controller, for use in 83-4170/01

Code: [83-4170/11](#)



Element heating for use in 83-4170

Code: [83-4170/14](#)



Element/Chamber complete, heating, for use in 83-4170/01

Code: [83-4170/12](#)



Refractory brick for 83-4170/01

Code: [83-4170/13](#)



Thermostat, KGrade, 370 long, dia 2.5, for 83-4170/01

Code: [83-4170/10](#)

Alternatives



Heat of Hydration Apparatus

Code: [38-4600/01](#)



Heat of Hydration Apparatus

Code: [38-4600/06](#)



Rotatest 1500

Code: [45-3810/01](#)



Rotatest 3000

Code: [45-3815/01](#)



Hand Operated Soil Lathe for 38mm Dia Specimens Up to 100mm Long.

Code: [23-5800](#)

Product Group: [Soil Lathes, Soil Trimmers \(Lathes\)](#)

For producing 38 mm diameter specimens. The lathe platen is adjustable in height and will accept specimens up to 100 mm in length.

Standards

BS 1377-1

Further Information

- Lightweight frame construction for both laboratory and field use.
- Sturdy plated steel uprights serve as guides for wire saw during final trimming procedure.
- Adjustable upper platen trimming for various sample heights.

Wire Saw and other trimming accessories not included; order separately.

Accessories



Trimming Knife

Code: [81-0710](#)

Alternatives



1.4" and 2.8" Hand Specimen Trimmer

Code: 23-5802



Pocket Penetrometer.

Code: [29-3729](#)

Product Group: [In-situ Testing](#), [Pocket Penetrometer](#), [Plate Bearing Apparatus](#)

- Direct-reading scale in tons/sq. ft. and kg/sq. cm.
- Ground and polished stainless steel loading piston.
- Calibrated spring and penetrometer body plated for rust resistance and long life.
- Convenient belt-loop style carrying case.
- Optional Adapter Foot for testing very soft materials.

The Pocket Penetrometer was originally developed for use by field personnel in checking visual classification of soils. Data was compiled on several thousand unconfined compressive strength tests of silty clays and clayey soils against the penetrometer readings to develop the scale.

Further Information

IMPORTANT: the readings obtained from the pocket penetrometer do not replace laboratory test results due to the fact that a small area penetration test is inherently liable to give misleading results. The instrument should not be used for obtaining foundation design data.

Specification

Range	0.25 to 4.5 tons/sq. ft. (kg/sq. cm).
Scale Divisions	0.25 tons/sq. ft. (kg/sq. cm).
Load Piston	1/4" (6 mm) diam.; stainless steel.
Carrying Case	Canvas; belt-loop style.
Dimensions	3/4" diam. x 6-3/8" l. (19 x 162 mm).
Weight	Net 7 oz. (198 g).

Accessories



Adaptor Foot

Code: [29-3729/10](#)

Alternatives



C.O.E Cone Penetrometer

Code: [29-3741](#)



Proctor & Mortar Penetrometer Set

Code: [29-3935](#)



Proving Ring Penetrometer

Code: [29-3739](#)



Water level indicator (dipmeter) with audio and light indicator 100 m

Code: [450-011](#)

Product Group: [Water level indicators](#)

Portable, lightweight, simple, reliable and easy to operate.

Clear interval markings.

Audible and visual water level alert signals.

Dipmeters are portable instruments for measuring the water level in wells, standpipes and boreholes. It is simple to use, portable and can be used at many locations. The tape design prevents it from sticking to wet surfaces, such as the lining of a borehole, ensuring accurate measurements.

The dipmeters have a stainless steel probe fitted to a flexible graduated cable which is wound on to a hand reel containing a transistorised switched circuit, audio (buzzer) and visual (LED light) indicators and a battery.

Sensitivity adjustment for variations in water conductivity, non-stretch polyethylene coated steel tape.

The sensor probe incorporates an insulating gap which acts as a switch, the circuit being completed when contact is made with the water. The cable consists of non-stretch contoured tape with standard steel conductors, graduated at one millimetre intervals. The probe is lowered down a borehole to the end of the tape. When it makes contact with water a buzzer sounds and an LED light comes on, both located on the reel. A reading can then be taken from the tape at the top of the borehole to indicate the water depth. A sensitivity control is accessible inside the hand reel to enable adjustment to suit the water conductivity.

The Probe is shrouded and made of stainless steel, 230mm length and 15mm diameter.

Available lengths:

450-008: 30m
450-010: 50m
450-011: 100m
450-012: 150m
450-013: 200m
450-015: 300m
450-017: 500m

Further Information

Graduated Every 10 mm.

Specification

Tape length	100 m
Weight	3.0 kg
Indicator	Audio and visual
Tape graduation	m/cm/mm

Alternatives



Water level indicator (dipmeter) with audio and light indicator 150 m

Code: [450-012](#)



Water level indicator (dipmeter) with audio and light indicator 200 m

Code: [450-013](#)



Water level indicator (dipmeter) with audio and light indicator 30 m

Code: [450-008](#)



Water level indicator (dipmeter) with audio and light indicator 300 m

Code: [450-015](#)



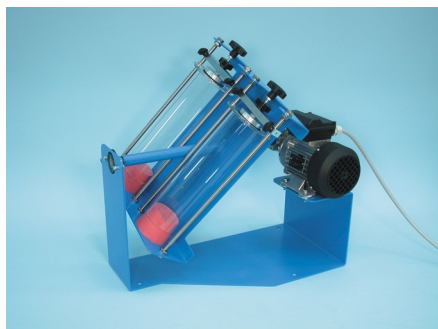
Water level indicator (dipmeter) with audio and light indicator 50 m

Code: [450-010](#)



Water level indicator (dipmeter) with audio and light indicator 500 m

Code: [450-017](#)



Mechanical End-Over-End Shaker Ce

Code: [24-2854/01](#)

Product Group: [Gas Jar Method](#)

With Friction Safety Device and Control Panel
220-240V 50/60 Hz 1Ph.

Fitted with friction safety device, capable of rotating two EL24-2830 Gas Jars at approximately 50 rpm to satisfy BS 1377.

Standards

BS 1377, EN 1997-2



Plate Bearing Apparatus Complete. 500kN Capacity

Code: 29-3800

Product Group: In-situ Testing, Plate Bearing Apparatus

Applications include the determination of bearing capacity of the soil in situ, designing for static loads on spread footings, and repetitive and non-repetitive plate loading tests of soils and flexible pavements.

Manufactured from machined steel plate with a finished thickness exceeding 25 mm. The plate has concentric markings on one face. All plates are supplied with two lifting eyes except for the 150 mm dia plate.

NOTE: to successfully perform the test, a reaction load is required.

IMPORTANT: The equipment is used in conjunction with a reaction beam. This is not supplied with the equipment.

Standards

BS 1377, EN 1997-3, ASTM D1194, ASTM D1195, ASTM D1196

Further Information

Comprising of:

- Hydraulic Jack 500 kN capacity
- Pressure system
- Datum bar
- 4x dial gauges 50 mm travel x 0.01 mm divisions
- 4x bearing plates: 150 mm, 305 mm, 455 mm and 760 mm diameter

Specification

Loading jack	500 kN capacity with integral ball seating
Pump	Hand operated, single speed with integral oil reservoir
Hose	3 m long. Maximum pressure 70 MPa with quick release couplings
Gauge	100 mm dia with quick release couplings and graphs to convert readings to kN, kgf and

Product Sheet

www.ele.com
+44 (0) 01525 249 200



Weights

lbf
Loading jack 24 kg.
Pressure system 12.5 kg



Distilled Water Still

Code: [82-8020/01](#)

Product Group: [Distilled Water Still](#)

Further Information

****NOT AVAILABLE FOR SALE IN THE USA****

Specification

Dimensions (l x w x h)	590 x 530 x 940 mm
Boiling chamber	Glass
Condenser	Borosilicate glass
Output	3.5 litres/hr when permanently connected to water supply
Electrical supply	220 – 240 V AC, 50 - 60 Hz, 1 ph
Rated power	2.75 kW
Weight	12 kg