



IF IT'S WORTH BUILDING, IT'S WORTH TESTING

This wishlist was generated on 29/11/2017, and contains the following Products:

---

23-1517

**150mm Dia Gravel Auger Head.**

---

23-1525

**50mm Dia Dutch Soil Auger Head.**

---

23-1547

**Handle and T Piece for Use with EL23-1541.**

---

23-1541

**Extension Rod 27mm Diameter 1m Long. for Use with Auger Heads**

---

23-3200

**Riffle Box 38mm Slot Width Complete with Three Containers.**

---

23-3100

**Riffle Box 19mm Slot Width Complete with Three Containers.**

---

24-2854/01

**Mechanical End-Over-End Shaker Ce**

---

79-5410

**8in Dia Receiver.**

---

79-5900

**12in Dia ASTM Sieve 1.18mm Stainless Steel Mesh.**

---

79-5860

**12in Dia ASTM Sieve 2.36mm Stainless Steel Mesh.**

---

79-5820

**12in Dia ASTM Sieve 4.75mm Stainless Steel Mesh. Non Standard Frame.**

---

79-6210

**12in Dia ASTM Sieve 9.50mm Stainless Steel Mesh.**

---

79-6230

**12in Dia ASTM Sieve 12.5mm Stainless Steel Mesh**

---

79-6280

**12in Dia ASTM Sieve 25.0mm Stainless Steel Mesh.**

---

79-6310

**12in Dia ASTM Sieve 37.5mm Stainless Steel Mesh.**

---

79-6060

**12in Dia ASTM Sieve 75 Mic Stainless Steel Mesh.**

---

79-6020

**12in Dia ASTM Sieve 150Mic Stainless Steel Mesh.**

---

79-5980

**12in Dia ASTM Sieve 300Mic Stainless Steel Mesh.**

---

79-5940

**12in Dia ASTM Sieve 600Mic Stainless Steel Mesh.**

---

79-6160

**12in Dia Receiver ASTM.**

---

37-6040

**50 kN Mini-Flexural Machine**

---

38-1000

**Blaine Air Permeability Apparatus**

---

42-1000/01

**Buoyancy Balance 6Kg X 0.1G. Supplied with Support Frame Water Tank & Suspension Hook.**

---

42-1005

**Wire Basket Brass with Handle Nominal 6000Cm<sup>3</sup> Capacity with 1.7mm Wire Mesh.**

---

34-2820

**Bulk Density Measure 15 Litre**

---

42-6000/12

**3.00" Rubber Mounted TRL (55) Slider for 42-6000**

---

42-6000/13

**3.00" Rubber Mounted Four S (96) Slider for 42-6000**

---

42-6000

**Pendulum Skid Resistance Tester**

---

# Contents

www.ele.com  
+44 (0) 01525 249 200



500-108

**Sighting Compass**

---

500-112

**Pocket altimeter**

---

513-024

**Complete Soil Analysis Test Kit. Photometer Ph and Conductivity Meters and Reagents for 50 Tests**

---

514-440

**Double Ring Infiltrometer Kit.**

---

418-150

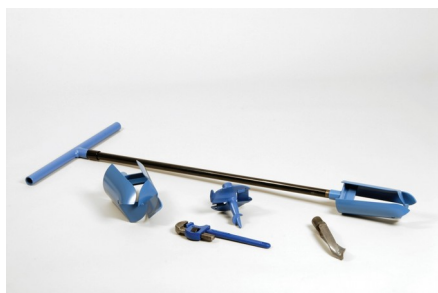
**Paqualab System 25 for Analysis of Drinking Water to EC Standard Categories 1 & 2.**

---

460-010

**De-Luxe Plastic Rain Gauge**

---



## 150mm Dia Gravel Auger Head.

Code: [23-1517](#)

Product Group: [Soil and Gravel Auger Heads](#)

Comprises one piece steel casting with a spiral point and two plates designed to close when lifting samples from the borehole; suitable for gravel and sand.

## Accessories



## 38mm Diameter Sample Tube 230mm Long Complete with End Caps.

Code: [23-1577](#)



## Extension Rod 27mm Diameter 1m Long. for Use with Auger Heads

Code: [23-1541](#)



## Handle and T Piece for Use with EL23-1541.

Code: [23-1547](#)



## Jarring Link for Driving Sample Tubes.

Code: [23-1587](#)



## Spiral Auger 40mm Diameter. One Piece Model

Code: [23-1617](#)



## Stillson Wrench Size 14.

Code: [23-1543](#)

---

### Alternatives



## 100mm Dia Soil Auger Head

Code: [23-1501](#)



## 150mm Dia Soil Auger Head

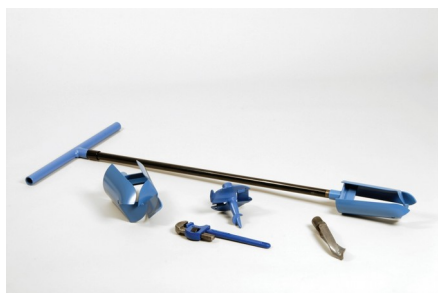
Code: [23-1504](#)



## 50mm Dia Dutch Soil Auger Head.

Code: [23-1525](#)





## 50mm Dia Dutch Soil Auger Head.

Code: [23-1525](#)

Product Group: [Soil and Gravel Auger Heads](#)

Constructed of heavy-duty steel plates; partly interlocked at the cutting end and suitable for fine, silty sand.

## Accessories



## 38mm Diameter Sample Tube 230mm Long Complete with End Caps.

Code: [23-1577](#)



## Extension Rod 27mm Diameter 1m Long. for Use with Auger Heads

Code: [23-1541](#)



## Handle and T Piece for Use with EL23-1541.

Code: [23-1547](#)



## Jarring Link for Driving Sample Tubes.

Code: [23-1587](#)



## Spiral Auger 40mm Diameter. One Piece Model

Code: [23-1617](#)



## Stillson Wrench Size 14.

Code: [23-1543](#)

---

### Alternatives



## 100mm Dia Soil Auger Head

Code: [23-1501](#)



## 150mm Dia Gravel Auger Head.

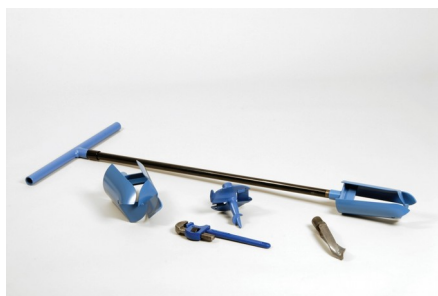
Code: [23-1517](#)



## 150mm Dia Soil Auger Head

Code: [23-1504](#)





## Handle and T Piece for Use with EL23-1541.

Code: [23-1547](#)

Product Group: [Extension Rods, Handles and Tools](#)



## Extension Rod 27mm Diameter 1m Long. for Use with Auger Heads

Code: [23-1541](#)

Product Group: [Extension Rods, Handles and Tools](#)

With tube connector, constructed of steel tubing  
approximately 1 metre long.



## Riffle Box 38mm Slot Width Complete with Three Containers.

Code: [23-3200](#)

Product Group: [Riffle Boxes \(Sample Dividers\)](#)

Manufactured from heavy-gauge sheet metal. BS recommended maximum particle size of 25 mm. EN recommended maximum particle size of 19 mm. Includes 8 slots each with a 38 mm slot width and an overall approximate capacity of 11 litres.

## Standards

BS 1377, BS 1924, BS 812, EN 932-1

## Specification

Recommended max particle size BS	25
Recommended max particle size EN	19
Slot width mm	38
No. of slots	8
Approx. capacity kg	11
Weight kg	17.5

## Alternatives



## Riffle Box 13mm Slot Width Complete with Three Containers.

Code: [23-3050](#)



## Riffle Box 15mm Slot Width Complete with Three Containers.

Code: [23-3070](#)



## Riffle Box 19mm Slot Width Complete with Three Containers.

Code: [23-3100](#)



## Riffle Box 25mm Slot Width Complete with Three Containers.

Code: [23-3150](#)



## Riffle Box 30mm Slot Width Complete with Three Containers.

Code: [23-3170](#)



## Riffle Box 50mm Slot Width Complete with Three Containers.

Code: [23-3300](#)



## Riffle Box 64mm Slot Width Complete with Three Containers.

Code: [23-3350](#)



## Riffle Box 7mm Slot Width Complete with Three Containers.

Code: [23-3000](#)



## Riffle Box 19mm Slot Width Complete with Three Containers.

Code: [23-3100](#)

Product Group: [Riffle Boxes \(Sample Dividers\)](#)

Manufactured from heavy-gauge sheet metal. BS recommended maximum particle size of 12.5 mm. EN recommended maximum particle size of 9.5 mm. Includes 10 slots each with a 19 mm slot width and an overall approximate capacity of 4 litres.

## Standards

BS 1377, BS 1924, BS 812, EN 932-1

## Specification

Recommended max particle size BS	12.5
Recommended max particle size EN	9.5
Slot width mm	19
No. of slots	10
Approx. capacity kg	4
Weight kg	9

## Alternatives



## Riffle Box 13mm Slot Width Complete with Three Containers.

Code: [23-3050](#)



## Riffle Box 15mm Slot Width Complete with Three Containers.

Code: [23-3070](#)



## Riffle Box 25mm Slot Width Complete with Three Containers.

Code: [23-3150](#)



## Riffle Box 30mm Slot Width Complete with Three Containers.

Code: [23-3170](#)



## Riffle Box 38mm Slot Width Complete with Three Containers.

Code: [23-3200](#)



## Riffle Box 50mm Slot Width Complete with Three Containers.

Code: [23-3300](#)



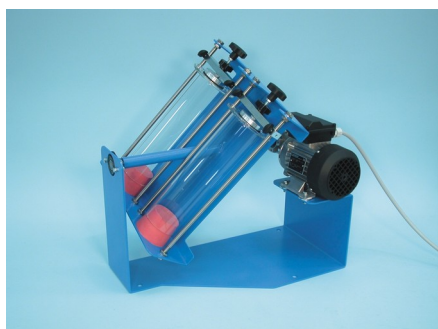
## Riffle Box 64mm Slot Width Complete with Three Containers.

Code: [23-3350](#)



## Riffle Box 7mm Slot Width Complete with Three Containers.

Code: [23-3000](#)



## Mechanical End-Over-End Shaker Ce

Code: [24-2854/01](#)

Product Group: [Gas Jar Method](#)

With Friction Safety Device and Control Panel  
220-240V 50/60 Hz 1Ph.

Fitted with friction safety device, capable of rotating two EL24-2830 Gas Jars at approximately 50 rpm to satisfy BS 1377.

## Standards

BS 1377, EN 1997-2





## 8in Dia Receiver.

Code: 79-5410

Product Group: Sieve Lids and Receivers ASTM, U.S.  
Standard Testing Sieves, 8" Diameter ASTM Sieves,  
8" Diameter ASTM Sieves, 8" Diameter ASTM Sieves

## Standards

ASTM E11



## 12in Dia ASTM Sieve 1.18mm Stainless Steel Mesh.

Code: 79-5900

Product Group: U.S. Standard Testing Sieves, 12" Diameter ASTM Sieves, 12" Diameter ASTM Sieves, 12" Diameter ASTM Sieves

## Standards

ASTM E11

## Specification

Frames	Full height; 3-1/4" (82.5 mm) depth to mesh.
Construction	Polished and lacquered brass with S.S. mesh.
Nameplates	Show standard, alternate and Tyler Screen Scale equivalent designations.
Weights	Net 4 lbs. (1.8 kg).
Sieve Size or Number	No. 16
Sieve Opening Standard	1.18 mm
Sieve Opening Alternative (in.)	0.0469



## 12in Dia ASTM Sieve 2.36mm Stainless Steel Mesh.

Code: 79-5860

Product Group: U.S. Standard Testing Sieves, 12" Diameter ASTM Sieves, 12" Diameter ASTM Sieves, 12" Diameter ASTM Sieves

## Standards

ASTM E11

## Specification

Frames	Full height; 3-1/4" (82.5 mm) depth to mesh.
Construction	Polished and lacquered brass with S.S. mesh.
Nameplates	Show standard, alternate and Tyler Screen Scale equivalent designations.
Weights	Net 4 lbs. (1.8 kg).
Sieve Size or Number	No. 7
Sieve Opening Standard	2.36 mm
Sieve Opening Alternative (in.)	0.0937



## 12in Dia ASTM Sieve 4.75mm Stainless Steel Mesh. Non Standard Frame.

Code: 79-5820

Product Group: U.S. Standard Testing Sieves, 12" Diameter ASTM Sieves, 12" Diameter ASTM Sieves, 12" Diameter ASTM Sieves

### Standards

ASTM E11

### Specification

Frames	Full height; 3-1/4" (82.5 mm) depth to mesh.
Construction	Polished and lacquered brass with S.S. mesh.
Nameplates	Show standard, alternate and Tyler Screen Scale equivalent designations.
Weights	Net 4 lbs. (1.8 kg).
Sieve Size or Number	No. 4
Sieve Opening Standard	4.75 mm
Sieve Opening Alternative (in.)	0.187



## 12in Dia ASTM Sieve 9.50mm Stainless Steel Mesh.

Code: 79-6210

Product Group: U.S. Standard Testing Sieves, 12" Diameter ASTM Sieves, 12" Diameter ASTM Sieves, 12" Diameter ASTM Sieves

## Standards

ASTM E11

## Specification

Frames	Full height; 3-1/4" (82.5 mm) depth to mesh.
Construction	Polished and lacquered brass with S.S. mesh.
Nameplates	Show standard, alternate and Tyler Screen Scale equivalent designations.
Weights	Net 4 lbs. (1.8 kg).
Sieve Size or Number	3/8"
Sieve Opening Standard	9.5 mm
Sieve Opening Alternative (in.)	0.375



## 12in Dia ASTM Sieve 12.5mm Stainless Steel Mesh

Code: 79-6230

Product Group: U.S. Standard Testing Sieves, 12" Diameter ASTM Sieves, 12" Diameter ASTM Sieves, 12" Diameter ASTM Sieves

## Standards

ASTM E11

## Specification

Frames	Full height; 3-1/4" (82.5 mm) depth to mesh.
Construction	Polished and lacquered brass with S.S. mesh.
Nameplates	Show standard, alternate and Tyler Screen Scale equivalent designations.
Weights	Net 4 lbs. (1.8 kg).
Sieve Size or Number	1/2"
Sieve Opening Standard	12.5 mm
Sieve Opening Alternative (in.)	0.5



## 12in Dia ASTM Sieve 25.0mm Stainless Steel Mesh.

Code: 79-6280

Product Group: U.S. Standard Testing Sieves, 12" Diameter ASTM Sieves, 12" Diameter ASTM Sieves, 12" Diameter ASTM Sieves

## Standards

ASTM E11

## Specification

Frames	Full height; 3-1/4" (82.5 mm) depth to mesh.
Construction	Polished and lacquered brass with S.S. mesh.
Nameplates	Show standard, alternate and Tyler Screen Scale equivalent designations.
Weights	Net 4 lbs. (1.8 kg).
Sieve Size or Number	1"
Sieve Opening Standard	25.0 mm
Sieve Opening Alternative (in.)	1





## 12in Dia ASTM Sieve 37.5mm Stainless Steel Mesh.

Code: 79-6310

Product Group: U.S. Standard Testing Sieves, 12" Diameter ASTM Sieves, 12" Diameter ASTM Sieves, 12" Diameter ASTM Sieves

## Standards

ASTM E11

## Specification

Frames	Full height; 3-1/4" (82.5 mm) depth to mesh.
Construction	Polished and lacquered brass with S.S. mesh.
Nameplates	Show standard, alternate and Tyler Screen Scale equivalent designations.
Weights	Net 4 lbs. (1.8 kg).
Sieve Size or Number	1-1/2"
Sieve Opening Standard	38.1 mm
Sieve Opening Alternative (in.)	1.5



## 12in Dia ASTM Sieve 75 Mic Stainless Steel Mesh.

Code: 79-6060

Product Group: U.S. Standard Testing Sieves, 12" Diameter ASTM Sieves, 12" Diameter ASTM Sieves, 12" Diameter ASTM Sieves

## Standards

ASTM E11

## Specification

Frames	Full height; 3-1/4" (82.5 mm) depth to mesh.
Construction	Polished and lacquered brass with S.S. mesh.
Nameplates	Show standard, alternate and Tyler Screen Scale equivalent designations.
Weights	Net 4 lbs. (1.8 kg).
Sieve Size or Number	No. 200
Sieve Opening Standard	75 um
Sieve Opening Alternative (in.)	0.0029



## 12in Dia ASTM Sieve 150Mic Stainless Steel Mesh.

Code: 79-6020

Product Group: U.S. Standard Testing Sieves, 12" Diameter ASTM Sieves, 12" Diameter ASTM Sieves, 12" Diameter ASTM Sieves

## Standards

ASTM E11

## Specification

Frames	Full height; 3-1/4" (82.5 mm) depth to mesh.
Construction	Polished and lacquered brass with S.S. mesh.
Nameplates	Show standard, alternate and Tyler Screen Scale equivalent designations.
Weights	Net 4 lbs. (1.8 kg).
Sieve Size or Number	No. 100
Sieve Opening Standard	150 um
Sieve Opening Alternative (in.)	0.0059



## 12in Dia ASTM Sieve 300Mic Stainless Steel Mesh.

Code: 79-5980

Product Group: U.S. Standard Testing Sieves, 12" Diameter ASTM Sieves, 12" Diameter ASTM Sieves, 12" Diameter ASTM Sieves

## Standards

ASTM E11

## Specification

Frames	Full height; 3-1/4" (82.5 mm) depth to mesh.
Construction	Polished and lacquered brass with S.S. mesh.
Nameplates	Show standard, alternate and Tyler Screen Scale equivalent designations.
Weights	Net 4 lbs. (1.8 kg).
Sieve Size or Number	No. 50
Sieve Opening Standard	300 um
Sieve Opening Alternative (in.)	0.0117



## 12in Dia ASTM Sieve 600Mic Stainless Steel Mesh.

Code: 79-5940

Product Group: U.S. Standard Testing Sieves, 12" Diameter ASTM Sieves, 12" Diameter ASTM Sieves, 12" Diameter ASTM Sieves

## Standards

ASTM E11

## Specification

Frames	Full height; 3-1/4" (82.5 mm) depth to mesh.
Construction	Polished and lacquered brass with S.S. mesh.
Nameplates	Show standard, alternate and Tyler Screen Scale equivalent designations.
Weights	Net 4 lbs. (1.8 kg).
Sieve Size or Number	No. 30
Sieve Opening Standard	600 $\mu$ m
Sieve Opening Alternative (in.)	0.0234



## 12in Dia Receiver ASTM.

Code: 79-6160

Product Group: Sieve Lids and Receivers ASTM, U.S.  
Standard Testing Sieves, 12" Diameter ASTM Sieves,  
12" Diameter ASTM Sieves, 12" Diameter ASTM  
Sieves

## Standards

ASTM E11



## 50 kN Mini-Flexural Machine

Code: 37-6040

Product Group: [Hand-operated Flexural Machine](#)

- Hand operated
- Rugged, high strength frame
- Double-action hydraulic pump
- Dual calibrated (kN/lbf) gauge

This compact flexural machine is designed for testing 100 mm and 150 mm square section beams. The base incorporates a series of bearer locating points, enabling a wide range of tests to be performed.

The unit is self contained with hydraulic pressure applied through a double-action hand pump to a ram fitted in the top of the frame making this an ideal portable onsite quality control machine. A 200 mm diameter load gauge, dual calibrated to 50 kN x 0.1 kN and 11000 lbf x 50 lbf graduations is fitted as standard.

## Standards

BS 1881-131

## Further Information

**\*\*Not available for sale in the USA\*\***





## Blaine Air Permeability Apparatus

Code: 38-1000

Product Group: Blaine Fineness Apparatus,  
Determination of Fineness Blaine Apparatus

## Standards

EN 196-6, EN 459-2, EN 13286-44, BS 4359-2, ASTM C204, AASHTO T153

## Specification

Cell	Stainless steel; 12.70 $\pm$ 0.10 mm i.d.
Disk	0.9 $\pm$ 0.1 mm thick with 30-40 one mm diam. holes.
Plunger	Stainless steel.
Manometer	U-tube glass with ground joint, stop cock and rubber bulb assembly.
Filter Paper	12.70 mm diam.
Fluid	Pure Mineral Oil.
Weight	Net 7 lbs. (3.2 kg).

## Accessories



### Electronic Balance - 620 g x 0.001 g

Code: 78-5405/01



## Filter Papers

Code: [38-0650](#)



## Pure Mineral Oil 1 Litre Bottle.

Code: [38-0620](#)



## Reference Cement

Code: [38-0645](#)

## Spares/Consumables



## Blaine Air Permeability Cell

Code: [38-1000/15](#)



## Filter Paper

Code: [38-0652](#)



## Manometer U-tube

Code: [38-1000/10](#)



## Buoyancy Balance 6Kg X 0.1G. Supplied with Support Frame Water Tank & Suspension Hook.

Code: [42-1000/01](#)

Product Group: [Particle Density \(specific gravity\) and Water Absorption for Coarse Aggregates](#)

The buoyancy balance system developed by ELE consists of a rigid support frame, incorporating a water tank mounted on a platform. A mechanical lifting device is used to raise the water tank through the frame height immersing the specimen suspended below the balance. The balance supplied may also be used as a standard weighing device, thus providing a versatile and comprehensive weighing system in the laboratory. 6000 g x 0.1 g supplied with frame, water tank and suspension hook.

## Standards

EN 1097-6, EN 12697-6, BS 812, ASTM C127, AASHTO T85

## Further Information

**\*\*NOT AVAILABLE FOR SALE IN THE USA\*\***

For 220 - 240 V AC, 50 - 60 Hz, 1 ph.

## Accessories



### 200 mm Diameter Lid

Code: [79-0010](#)



### 200 mm Diameter Receiver

Code: [79-0020](#)



## 200mm Dia BS Sieve 31.5mm Perforated Plate.

Code: [79-1630](#)

---



## 200mm Dia BS Sieve 4.00mm Stainless Steel Mesh.

Code: [79-0310](#)

---



## 200mm Dia BS Sieve 63 Mic Stainless Steel Mesh.

Code: [79-0070](#)

---



## 200mm Dia BS Sieve 63.0mm Perforated Plate.

Code: [79-1670](#)

---



## Digital Pocket Thermometer

Code: [82-5420](#)

---



## Sample Container - Tinned Steel 10 litres

Code: [81-3060](#)

---



## Sample Tray - 406 x 406 x 50 mm

Code: [81-4030](#)

---



## Wire Basket Brass with Handle Nominal 6000Cm<sup>3</sup> Capacity with 1.7mm Wire Mesh.

Code: [42-1005](#)



## Wire Basket Brass with Handle Nominal 6000Cm<sup>3</sup> Capacity with 1.7mm Wire Mesh.

Code: 42-1005

Product Group: Particle Density (specific gravity) and  
Water Absorption for Coarse Aggregates

For BS 812 Relative Density. 200 mm diameter x 190  
mm deep, 1.70 mm wire mesh.

### Standards

EN 1097-6, EN 12697-6, BS 812, ASTM C127, AASHTO T85

### Further Information

**\*\*NOT AVAILABLE FOR SALE IN THE USA\*\***





## Bulk Density Measure 15 Litre

Code: [34-2820](#)

Product Group: [Bulk Density Measures, Fresh Concrete](#) - [Bulk Density Measures](#)

Manufactured from heavy gauge steel these bulk density measures comply with the requirements of either BS 812, EN 1097-3, 12350-6 or ASTM C138. All measures incorporate carrying handles as standard.

## Further Information

**\*\*NOT AVAILABLE FOR SALE IN THE USA\*\***

For other bulk density measures see the aggregates section



## 3.00" Rubber Mounted TRL (55) Slider for 42-6000

Code: [42-6000/12](#)

Product Group: [Skid Resistance Testing](#), [Skid Resistance Testing](#)

Slider for car tyres on asphalt



## **3.00" Rubber Mounted Four S (96) Slider for 42-6000**

Code: [42-6000/13](#)

Product Group: [Skid Resistance Testing](#), [Skid Resistance Testing](#)

Slider for shoes on surfaces



## Pendulum Skid Resistance Tester

Code: 42-6000

Product Group: [Skid Resistance Testing](#), [Skid Resistance Testing](#)

The Pendulum Skid Resistance Tester was originally designed in the 1940s in the USA and further developed in the 1960s at the TRL (Transport Research Laboratory) for the testing of road surfaces.

The device measures the frictional resistance between a rubber slider mounted on the end of a pendulum arm and the surface to be tested. This provides road engineers with a method of checking the resistance of wet and dry surfaces to slipping and skidding, both in the lab and in situ.

It operates by a pendulum rotating about a spindle which is attached to a vertical pillar. At the end of the tubular arm, a head of known mass is fitted with a rubber slider. The pendulum is released from a horizontal position so that it strikes the sample surface at a constant speed. The distance travelled by the head after hitting the sample is determined by the friction of the sample surface.

## Standards

EN 1097-8:2009, EN 1436:1997, EN 13036-4:2003, ASTM E303-93, BS 812 Pt 114, BS 6077 Pt 1, BS 7044, BS 7188, BS 8204, BS 7976

## Further Information

### Applications:

- Assessment of surface friction and skid resistance properties
- Testing of aggregates in the PSV (Polished Stone Value) test
- Testing of new road surface materials
- Testing of pedestrian pavements
- RTA (road traffic accidents)
- Litigation investigations

### Features:

- Designed for lab and on site road surface testing
- Factory calibrated to EN1097-8
- Low friction arm, and lightweight pointer
- Supplied with 'F' scale for use with small slider set for 76mm slide length (PSV test)
- Highly repeatable
- Supplied with carrying case

## Specification

Dimensions (WxDxH)	695 x 295 x 695 mm
Volume	0.15m3
Weight	30 kg

## Accessories



### 1.25" Rubber Mounted PSV Slider for 42-6000

Code: [42-6000/11](#)



### 3.00" Rubber Mounted CEN Slider for 42-6000

Code: [42-6000/14](#)



### 3.00" Rubber Mounted Four S (96) Slider for 42-6000

Code: [42-6000/13](#)



### 3.00" Rubber Mounted TRL (55) Slider for 42-6000

Code: [42-6000/12](#)



### Base Plate for Skid Resistance Tester for lab testing

Code: [42-6200](#)



## First traceable calibration for 42-6000

Code: [42-6000/15](#)



## Set of 3 Spreader Feet for Skid Resistance Tester for in-situ testing

Code: [42-6000/10](#)



## Sighting Compass

Code: [500-108](#)

Product Group: [Surveying Equipment](#)

With inclinometer. A folding pocket instrument with sighting mirror in the lid. Used for defining map locations and measuring geological equipment.



## Pocket altimeter

Code: [500-112](#)

Product Group: [Surveying Equipment](#)

With combination holder, as specified.





## Complete Soil Analysis Test Kit. Photometer Ph and Conductivity Meters and Reagents for 50 Tests

Code: [513-024](#)

Product Group: [Soil test kits](#)

A complete soils analysis kit:

- pH
- lime requirement
- nitrate nitrogen
- phosphate
- potassium
- conductivity
- calcium
- magnesium
- aluminium
- ammonia
- copper
- chloride
- iron
- manganese
- sulphate

### Further Information

Reagents 50 Tests of each parameter. Includes soil scoop, de-ion pack, Pocket TDS Meter, SoilTest 10 Instrument and Pocket pH Meter.

The kit is ideal where highly accurate measurement of soil pH is required or where the measurement of conductivity for salt content is an important factor in agricultural management.

The pH and conductivity meters included in the kit are each supplied in a soft carrying pouch.



## Double Ring Infiltrometer Kit.

Code: [514-440](#)

Product Group: [Permeability](#)

Used for the determination of infiltration capacity above the water table.

Allows synchronous determination of infiltration capacity in triplicate.

A comprehensive kit for the determination of soil infiltration capacity above the water table. The components are manufactured from high-quality materials for exhaustive field use.

514-440 kit comprises;

3 x double ring infiltrometers:

1x inner ring 280 mm, outer ring 530 mm diameter

1x inner ring 300 mm, outer ring 550 mm diameter

1x inner ring 320 mm, outer ring 570 mm diameter

Driving plate with handle for inner and outer rings

3 x adjustable measuring bridges

3 x floats with measuring rods

1 x nylon headed hammer

1 x stop watch, 0-30 sec x 0.1 sec accuracy

## Specification

Maximum measuring depth	0 cm
Measured parameters	infiltration ratio
Reading accuracy	1 mm
Registration type	manual
Package size	65 x 65 x 50 cm
Weight	50 kg

## Accessories

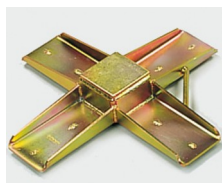


## Club hammer

Code: [29-5040](#)

---

## Spares/Consumables



## Driving Plate

Code: [514-446](#)



## Soft Headed Mallet.

Code: [29-5020](#)



## Stopwatch

Code: [81-0521](#)

---

## Alternatives



## Double Ring Infiltrometer

Code: [25-0660](#)



## Paqualab System 25 for Analysis of Drinking Water to EC Standard Categories 1 & 2.

Code: **418-150**

Product Group: **Paqualab Standard Systems**

Portable drinking water quality testing system.

Microbiological - Coliform & E.Coli.

Physical - temperature, conductivity & turbidity.

Chemical - pH, Cl, NH<sub>3</sub>, NO<sub>2</sub> & NO<sub>3</sub> plus over 40 chemical tests available.

AC/DC and rechargeable battery powered incubator.  
On-site testing for fast, accurate results.

Long-term monitoring and emergency testing of drinking water to EC and WHO guidelines.

Comprising of the ELE Paqualab incubator 25, pH/temperature/mV meter, conductivity/temperature meter, turbidity meter, 0 - 1000 FTU, ELE Paqualab photometer, and consumables for 200 tests on faecal or total coliforms, chlorine, ammonia, nitrates and nitrites.

The Paqualab is a portable testing system for the key drinking water quality parameters. The Paqualab allows the laboratory to be carried to water so that accurate results are obtained sooner even in remote areas. Laboratory standard results can be obtained by operators with the minimum of training. The equipment provided in each Paqualab has been specifically designed for field use. Aluminium replaces glass for many components for improved strength and lighter weight. The incubators have 2 pre-set temperatures that are usually set to 37°C and 44°C.

The internal battery provides sufficient power for a full incubation cycle.

Over 1000 Paqualabs are in use throughout the world for monitoring drinking water in remote areas, emergency situations, research and education. The Paqualab is a completely modular system. Standard kits are available as shown below. All items are also available individually to enable the user to build a system to meet their specific requirements. In addition, Paqualab Incubator systems contain all the hardware required for microbiological tests. Paqualab standard systems are based on the Incubator systems and also include tests for other parameters as shown below.

## Further Information

Overall dimensions 335 x 230 x 275 mm

## Specification

Standard system

Item supplied	50 (418-160)	25 (418-150)
(420-035) Universal & Incubator 50	Yes	-
(420-030) Universal Incubator 25	-	Yes
(430-020) pH/Temp/mV meter	Yes	Yes
(513-160) Conductivity/TDS/temp meter	Yes	Yes
(430-260) Turbidity meter	Yes	Yes
(430-550) Photometer	Yes	Yes
(433-115/10) Chlorine reagent system, free combined and total pack of 250	Yes	Yes
(433-102/10) Ammonia reagent system, pack of 250 tests	Yes	Yes
(433-166/10) Nitrate reagent system, pack of 200 tests	Yes	Yes
(433-168/10) Nitrite reagent system, 4 packs of 50 tests	Yes	Yes
(422-010) Coliform starter pack. Sufficient for 200 tests	Yes	Yes

# Product Sheet

www.ele.com  
+44 (0) 01525 249 200



Incubator system

Item supplied	50 (418-160)	25 (418-150)
---------------	--------------	--------------

Large rigid carrying case	Yes	-
---------------------------	-----	---

Standard rigid carrying case	-	Yes
------------------------------	---	-----

Universal incubator	Yes	Yes
---------------------	-----	-----

Standard incubator	Yes	-
--------------------	-----	---

Incubator linking lead	Yes	-
------------------------	-----	---

Filtration unit	Yes	Yes
-----------------	-----	-----

Mains lead	Yes	Yes
------------	-----	-----

Battery lead	Yes	Yes
--------------	-----	-----

Cigar lighter plug	Yes	Yes
--------------------	-----	-----

Aluminium petri dishes	Yes	Yes
------------------------	-----	-----

Plastic autoclavable bottles (x4)	Yes	Yes
-----------------------------------	-----	-----

Dropping pipettes (x2)	Yes	Yes
------------------------	-----	-----

Forceps	Yes	Yes
---------	-----	-----

Magnifying glass	Yes	Yes
------------------	-----	-----

Thermometer (spirit)	Yes	Yes
----------------------	-----	-----

Trim tool	Yes	Yes
Grease	Yes	Yes
Instruction manual in binder	Yes	Yes

## Spares/Consumables



### Aluminium Petri Dishes Pack of 25.

Code: [422-560](#)



### Coliform Starter Pack. Sufficient for 200 Tests

Code: [422-010](#)



### Filtration Unit AI Construction Complete with Sampling Cup.

Code: [420-450](#)



### Membrane Lauryl Sulphate Medium 38.1 Gram Pack. Sufficient for 200 Tests.

Code: [422-110](#)



## Pad Dispenser.

Code: [422-515](#)



## Sterile Filter Membranes and Absorbent Pads. Pack of 200.

Code: [422-508](#)

## Alternatives



## Paqualab System 50 for Analysis of Drinking Water to EC Standard Categories 1 & 2.

Code: [418-160](#)





## De-Luxe Plastic Rain Gauge

Code: [460-010](#)

Product Group: [Daily Raingauges](#)

Made from strong UV stabilised plastic. The detachable internal collecting jar is calibrated in mm and inches of rain.

## Further Information

Supplied with fixing bracket.