



IF IT'S WORTH BUILDING, IT'S WORTH TESTING

This wishlist was generated on 12/02/2018, and contains the following Products:

38-2010

Vicat Frame

38-2110

EN Initial and Final Set Needle

38-2300

EN Vicat Mould

79-1640

200mm Dia BS Sieve 37.5mm Perforated Plate.

79-1590

200mm Dia BS Sieve 19.0mm Perforated Plate.

79-1550

200mm Dia BS Sieve 9.50mm Perforated Plate.

79-1510

200mm Dia BS Sieve 4.75mm Perforated Plate.

79-0280

200mm Dia BS Sieve 2.36mm Stainless Steel Mesh.

79-0220

200mm Dia BS Sieve 850Mic Stainless Steel Mesh.

79-0200

200mm Dia BS Sieve 600Mic Stainless Steel Mesh.

79-0160

200mm Dia BS Sieve 300Mic Stainless Steel Mesh.

79-0120

200mm Dia BS Sieve 150 Mic Stainless Steel Mesh.

79-0090

200mm Dia BS Sieve 90 Mic Stainless Steel Mesh.

80-0200/01

ELE Sieve Shaker

79-0020

200 mm Diameter Receiver

79-0010

200 mm Diameter Lid

38-3005

Le Chatelier Mould

38-3205

Extensibility of Mould Apparatus EN

38-3420/01

Le Chatelier Water Bath

38-3300

Tamping Rod

34-0192

Slump Test Set BS & ASTM. C/W Slump Cone Base Plate Steel Rule Tamping Rod & Funnel.

34-4570

150mm Cube Mould 4-Part Clamp Type. Cast Iron Construction. BS EN Compliant.

34-4520

100mm Cube Mould 4-Part Clamp Type. Cast Iron Construction. BS EN Compliant.

36-3090/01

ADR Touch 2000 Standard Compression Machine with Digital Readout.

37-5000

Standard Distance Piece - 50 mm Depth

37-5050

Standard Distance Piece - 80 mm Depth

37-5100

Standard Distance Piece - 100 mm Depth

35-1480

Standard Concrete Test Hammer

35-2302/09

Ultrasonic Concrete Tester 110-240V 50/60Hz 1Ph



Vicat Frame

Code: [38-2010](#)

Product Group: [Vicat Method](#)

Complete with consistency plunger, 10 mm diameter.
Requires one initial or final set needle to make up test weight to 300g.

Standards

EN 196-3, EN 13454-2, ASTM C187, ASTM C191

Further Information

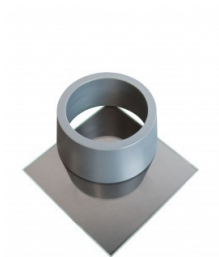
****NOT AVAILABLE FOR SALE IN THE USA****

Accessories

ASTM Initial Set Needle

Code: [38-2620](#)





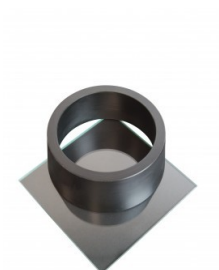
ASTM Vicat Mould

Code: [38-2660](#)



EN Initial and Final Set Needle

Code: [38-2110](#)



EN Vicat Mould

Code: [38-2300](#)



Engineer's Steel Rule

Code: [81-0805](#)



Harvard Trip Balance

Code: [78-7090](#)



Timer Clock

Code: [81-0518](#)



Vicat Mould

Code: [38-2200](#)



Weights for Harvard Trip Balance

Code: [78-7110](#)

Spares/Consumables



Consistency Plunger

Code: [38-2010/10](#)



EN Initial and Final Set Needle

Code: [38-2110](#)

Product Group: [Vicat Method](#)

1.13mm diameter and 1.13mm diameter with special footing.

Standards

ASTM C187, ASTM C191

Further Information

****NOT AVAILABLE FOR SALE IN THE USA****

Accessories

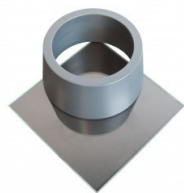
ASTM Initial Set Needle

Code: [38-2620](#)



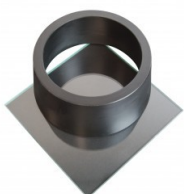
ASTM Vicat Mould

Code: [38-2660](#)



EN Vicat Mould

Code: [38-2300](#)



Engineer's Steel Rule

Code: [81-0805](#)



Harvard Trip Balance

Code: [78-7090](#)

Vicat Mould

Code: 38-2200



Weights for Harvard Trip Balance

Code: 78-7110

Spares/Consumables

Consistency Plunger

Code: 38-2010/10



Alternatives

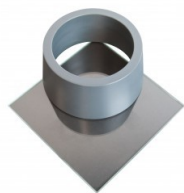
ASTM Initial Set Needle

Code: 38-2620



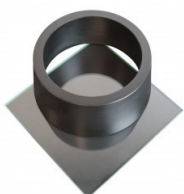
ASTM Vicat Mould

Code: [38-2660](#)



EN Vicat Mould

Code: [38-2300](#)



Engineer's Steel Rule

Code: [81-0805](#)



Harvard Trip Balance

Code: [78-7090](#)



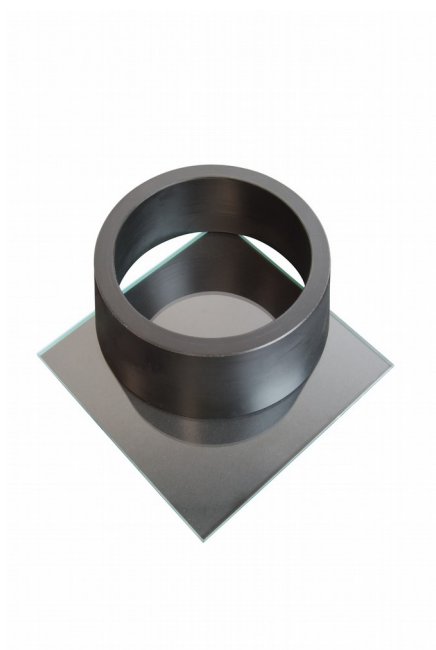
Vicat Mould

Code: [38-2200](#)



Weights for Harvard Trip Balance

Code: [78-7110](#)



EN Vicat Mould

Code: [38-2300](#)

Product Group: [Vicat Method, Automatic Vicat](#)

Accessory: manufactured from a hard rubber compound and supplied complete with a glass base plate.

Standards

EN 196-3

Further Information

****NOT AVAILABLE FOR SALE IN THE USA****

Accessories

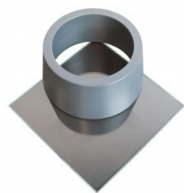
ASTM Initial Set Needle

Code: [38-2620](#)



ASTM Vicat Mould

Code: [38-2660](#)



EN Initial and Final Set Needle

Code: [38-2110](#)



Vicat Mould

Code: [38-2200](#)



Spares/Consumables

Consistency Plunger

Code: [38-2010/10](#)

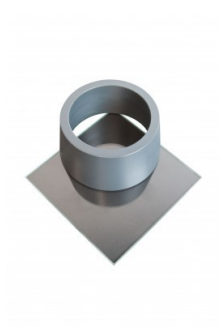


Alternatives



ASTM Initial Set Needle

Code: [38-2620](#)



ASTM Vicat Mould

Code: [38-2660](#)



EN Initial and Final Set Needle

Code: [38-2110](#)



Vicat Mould

Code: [38-2200](#)



200mm Dia BS Sieve 37.5mm Perforated Plate.

Code: 79-1640

Product Group: 200mm Diameter BS Sieves, 200mm Diameter BS Sieves, 200mm Diameter BS Sieves

Standards

BS 410-1, ISO 3310, ISO 565, EN933-2

Further Information

NOT AVAILABLE FOR SALE IN THE USA



200mm Dia BS Sieve 19.0mm Perforated Plate.

Code: 79-1590

Product Group: 200mm Diameter BS Sieves, 200mm Diameter BS Sieves, 200mm Diameter BS Sieves

Standards

BS 410-1, ISO 3310, ISO 565, EN933-2

Further Information

****NOT AVAILABLE FOR SALE IN THE USA****



200mm Dia BS Sieve 9.50mm Perforated Plate.

Code: 79-1550

Product Group: 200mm Diameter BS Sieves, 200mm Diameter BS Sieves, 200mm Diameter BS Sieves

Standards

BS 410-1, ISO 3310, ISO 565, EN933-2

Further Information

NOT AVAILABLE FOR SALE IN THE USA



200mm Dia BS Sieve 4.75mm Perforated Plate.

Code: 79-1510

Product Group: 200mm Diameter BS Sieves, 200mm Diameter BS Sieves, 200mm Diameter BS Sieves

Standards

BS 410-1, ISO 3310, ISO 565, EN933-2

Further Information

****NOT AVAILABLE FOR SALE IN THE USA****



200mm Dia BS Sieve 2.36mm Stainless Steel Mesh.

Code: [79-0280](#)

Product Group: [200mm Diameter BS Sieves](#), [200mm Diameter BS Sieves](#), [200mm Diameter BS Sieves](#)

Standards

BS 410-1, ISO 3310, EN933-2, ISO 565

Further Information

****NOT AVAILABLE FOR SALE IN THE USA****



200mm Dia BS Sieve 850Mic Stainless Steel Mesh.

Code: [79-0220](#)

Product Group: [200mm Diameter BS Sieves](#), [200mm Diameter BS Sieves](#), [200mm Diameter BS Sieves](#)

Standards

BS 410-1, ISO 3310, EN933-2, ISO 565

Further Information

****NOT AVAILABLE FOR SALE IN THE USA****



200mm Dia BS Sieve 600Mic Stainless Steel Mesh.

Code: 79-0200

Product Group: 200mm Diameter BS Sieves, 200mm Diameter BS Sieves, 200mm Diameter BS Sieves

Standards

BS 410-1, ISO 3310, EN933-2

Further Information

NOT AVAILABLE FOR SALE IN THE USA



200mm Dia BS Sieve 300Mic Stainless Steel Mesh.

Code: 79-0160

Product Group: 200mm Diameter BS Sieves, 200mm Diameter BS Sieves, 200mm Diameter BS Sieves

Standards

BS 410-1, ISO 3310, EN933-2, ISO 565

Further Information

****NOT AVAILABLE FOR SALE IN THE USA****



200mm Dia BS Sieve 150 Mic Stainless Steel Mesh.

Code: [79-0120](#)

Product Group: [200mm Diameter BS Sieves](#), [200mm Diameter BS Sieves](#), [200mm Diameter BS Sieves](#)

Standards

BS 410-1, ISO 3310, ISO 565, EN933-2

Further Information

****NOT AVAILABLE FOR SALE IN THE USA****



200mm Dia BS Sieve 90 Mic Stainless Steel Mesh.

Code: [79-0090](#)

Product Group: [200mm Diameter BS Sieves](#), [200mm Diameter BS Sieves](#), [200mm Diameter BS Sieves](#)

Standards

BS 410-1, ISO 3310, ISO 565, EN933-2

Further Information

****NOT AVAILABLE FOR SALE IN THE USA****



ELE Sieve Shaker

Code: 80-0200/01

Product Group: ELE Sieve Shaker

The ELE sieve shaker is powered by an electromagnetic drive that has no rotating parts to wear making it maintenance free and extremely quiet in operation.

The unit features a triple Vertical-Lateral-Rotary vibrating action that moves the sample over the sieve producing faster more efficient sieving, while the rapid vertical movements also help keep the apertures from blinding.

The shaker is ideal for laboratory or on site use. It is robust, compact and sufficiently lightweight to be portable. The separate digital microprocessor controlled console unit incorporates a keypad for setting the sieving program and is isolated from any effects of vibration from the shaker.

As standard the shaker includes, timer 0-999 minutes, adjustable vibration intensity and adjustable intermittent or continuous operation.

Further Information

****NOT AVAILABLE FOR SALE IN THE USA****

The unit accepts up to ten 200 mm or 8 inch, full height, diameter sieves and lid and receiver, or up to six 300 mm or 12 inch diameter sieves and lid and receiver. Complete as specified. Dimensions (l x w x h) 380 x 440 x 1085 mm. For 220 - 240 V AC, 50 Hz 1ph.



200 mm Diameter Receiver

Code: 79-0020

Product Group: Sieve Lids and Receivers ISO and BS, 200mm Diameter BS Sieves, 200mm Diameter BS Sieves, 200mm Diameter BS Sieves

Standards

BS 410-1, ISO 3310

Further Information

NOT AVAILABLE FOR SALE IN THE USA



200 mm Diameter Lid

Code: 79-0010

Product Group: Sieve Lids and Receivers ISO and BS, 200mm Diameter BS Sieves, 200mm Diameter BS Sieves, 200mm Diameter BS Sieves

Standards

BS 410-1, ISO 3310

Further Information

****NOT AVAILABLE FOR SALE IN THE USA****



Le Chatelier Mould

Code: 38-3005

Product Group: General Expansion of Dry Hydrated Lime by the Le Chatelier Method, Soundness of Cement Paste by the Le Chatelier Method, Soundness

Comprising a split cylinder fitted with two indicator stems. The mould is supplied complete with two glass plates and a weight 100 g \pm 10 g. Three moulds required for each test.

Standards

BS 6463, EN 196-3, EN 459-2

Further Information

****NOT AVAILABLE FOR SALE IN THE USA****

Accessories



Extensibility of Mould Apparatus BS

Code: 38-3200



Extensibility of Mould Apparatus EN

Code: 38-3205



Le Chatelier Water Bath

Code: 38-3420/01



Tamping Rod

Code: [38-3300](#)



Trowel - Gauging

Code: [81-0335](#)



Extensibility of Mould Apparatus EN

Code: 38-3205

Product Group: General Expansion of Dry Hydrated Lime by the Le Chatelier Method

Conforms to EN196-3, 459-2. The unit comprises a metal sleeve with a hook and set screw to fit over one of the mould pointers, and a clamp to fit onto the other pointer of the mould. Supplied complete with one weight 300 g \pm 1 g.

Standards

EN 196-3

Further Information

NOT AVAILABLE FOR SALE IN THE USA

Accessories



Tamping Rod

Code: 38-3300

Alternatives



Tamping Rod

Code: 38-3300



Le Chatelier Water Bath

Code: [38-3420/01](#)

Product Group: [Soundness of Cement Paste by the Le Chatelier Method, Soundness](#)

Manufactured from corrosion resistant material, complete with a removable rack to hold up to twelve moulds and timer unit.

Further Information

****NOT AVAILABLE FOR SALE IN THE USA****

Accessories



Extensibility of Mould Apparatus BS

Code: [38-3200](#)



Tamping Rod

Code: [38-3300](#)



Trowel - Gauging

Code: [81-0335](#)

Alternatives



Extensibility of Mould Apparatus BS

Code: [38-3200](#)



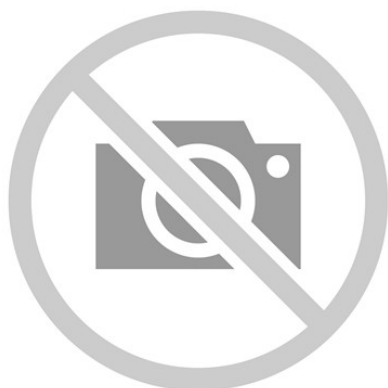
Tamping Rod

Code: [38-3300](#)



Trowel - Gauging

Code: [81-0335](#)



Tamping Rod

Code: 38-3300

Product Group: General Expansion of Dry Hydrated
Lime by the Le Chatelier Method

17 mm end diameter.

Further Information

NOT AVAILABLE FOR SALE IN THE USA

Accessories



Extensibility of Mould Apparatus BS

Code: 38-3200



Extensibility of Mould Apparatus EN

Code: 38-3205



Le Chatelier Water Bath

Code: 38-3420/01

Alternatives



Extensibility of Mould Apparatus BS

Code: 38-3200



Extensibility of Mould Apparatus EN

Code: 38-3205



Le Chatelier Water Bath

Code: 38-3420/01



Slump Test Set BS & ASTM. C/W Slump Cone Base Plate Steel Rule Tamping Rod & Funnel.

Code: [34-0192](#)

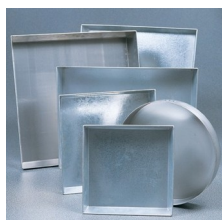
Product Group: [Slump Test](#)

BS and ASTM comprising of slump cone, base plate, steel rule, tamping rod and funnel.

Further Information

****NOT AVAILABLE FOR SALE IN THE USA****

Accessories



Sample Tray - 1200 x 1160 x 50 mm

Code: [81-4230](#)



Shovel - With flat blade

Code: [81-0240](#)

Spares/Consumables



Stopwatch

Code: [81-0521](#)



150mm Cube Mould 4-Part Clamp Type. Cast Iron Construction. BS EN Compliant.

Code: [34-4570](#)

Product Group: [Cube Moulds](#), [Cube Moulds](#)

4-part with clamp attached base plate.

Standards

BS 1881-108, EN 12390-1, EN 12390-2

Specification

| | |
|--------------|-------------------------------------|
| Construction | Bolted sides and clamped base plate |
| Finish | Painted |
| Weight | 42 lb (19.1 kg) |

Accessories



Aluminium Scoop Large

Code: [81-0220](#)



Compacting Bar 25mm Sq X 380mm

Code: [34-2910](#)



Float - Plasterer's type

Code: [81-0340](#)



Mould Oil (25 Litre Drum)

Code: [82-7341](#)



Wire Brush

Code: [81-0705](#)

Spares/Consumables



Soft Headed Mallet.

Code: [29-5020](#)

Alternatives



Vibrating Table 600 X 400mm Table Top. 220-240V 50Hz 1Ph. Supplied with clamping assembly

Code: [34-6250/01](#)



100mm Cube Mould 4-Part Clamp Type. Cast Iron Construction. BS EN Compliant.

Code: [34-4520](#)

Product Group: [Cube Moulds](#), [Cube Moulds](#)

4-part with clamp attached base plate.

Standards

EN 12390-1, EN 12390-2

Specification

| | |
|--------------|-------------------------------------|
| Construction | Bolted sides and clamped base plate |
| Finish | Painted |
| Weight | 20 lb (9.1 kg) |

Accessories



Aluminium Scoop Large

Code: [81-0220](#)



Compacting Bar 25mm Sq X 380mm

Code: [34-2910](#)



Float - Plasterer's type

Code: [81-0340](#)



Mould Oil (25 Litre Drum)

Code: [82-7341](#)



Wire Brush

Code: [81-0705](#)

Spares/Consumables



Soft Headed Mallet.

Code: [29-5020](#)

Alternatives



Vibrating Table 600 X 400mm Table Top. 220-240V 50Hz 1Ph. Supplied with clamping assembly

Code: [34-6250/01](#)



ADR Touch 2000 Standard Compression Machine with Digital Readout.

Code: 36-3090/01

Product Group: General Purpose Compression Machines

- 2000 kN/450 000 lbf capacity
- Tests 150 and 100 mm concrete cubes or cylinders up to 320 x 160 mm diameter
- Supplied with Windows(R) download software as standard.

Incorporating the ADR Touch digital readout, the machines are designed to test cubes and cylinders in accordance with most International Standards. Supplied fitted for cylinder testing with safety gates. When used for cube testing appropriate distance pieces according to the size of specimen to be tested are required and must be ordered separately.

Further Information

****NOT AVAILABLE FOR SALE IN THE USA****

The Standard range of compression machines has been designed to meet the need for a simple, economic and reliable means of testing concrete.

Whilst delivering all the features and reputation of the established ADR Series with its extensive design history, the new and improved user interface provides a high quality platform for testing that enhances the performance of ELE's compression machines.

New, sophisticated electronics further the benefits of simplified operation, whilst delivering the highest levels of accuracy in testing concrete and cement/mortar samples, satisfying the needs of Quality Control Managers, Lab Managers and Technicians.

ACCURACY & SAVINGS

The new ADR Touch Series, with 145mm (5.7") high resolution QVGA touch screen interface and intuitive menu-driven operation, reduces the time taken to set up the machine and perform tests, reducing the time to train staff by up to 25%.

- Up to 6 sample types can be set as favorites, enabling one-touch set up for repeat testing.
- Full, QWERTY touch pad for input of test data.

Most testing errors produce lower strength results. Noncompliant loading rates can generate errors in measured strength. The user interface includes real-time display of load vs. time, further ensuring accurate and consistent test results and providing "goodness of test" data to improve traceability in your QC operations.

TRACEABILITY & DATA QUALITY

The ADR range now provides improved data quality and traceability in due diligence cases - it is now possible to demonstrate traceability all the way from the machine/user to the accreditation body, increasing your reputation and peace of mind - all test results now come complete with the machine serial number attached.

- Enhanced USB data communications between PC and machine - eliminating the need for download software.
- Two gigabytes of storage memory.
- Full customization of sample sizes - stress calculations are automatically recalculated.

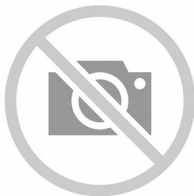
USER SAFETY

With full safety gates as standard, total systems diagnostics, ram run-out switches and overload warnings ensure the safety of your employees and the reliability of your machine.

Specification

| | |
|----------------------|---------------------------|
| Testing Standards | BS EN ISO 7500-1, ASTM E4 |
| Capacity | 2000 kN |
| Cubes (Concrete) | Up to 150 mm |
| Cylinders (Concrete) | Up to 160 x 320 mm |
| Blocks | n/a |
| Flexural Testing | Via Flexural Frame |
| TFV and ACV | Yes |
| Voltage Supply | 220-240V 50/60 Hz 1Ph. |
| Frame Type | Welded |
| Max vert. Clearance | 340 mm |
| Max hor. Clearance | 325 mm |
| Platen Sizes | Lower, Upper 222 mm |
| Max Ram Travel | 50 mm |

Accessories



100kN Flexural Fitting Kit (ADR) Used for Connecting Flexural Frames to ADR Compression Machines.

Code: [37-6138](#)



2000 kN Capacity Calibration Load Cell with Hand-Held Readout & Calibrated to UKAS

Code: [37-8315](#)



ADR Touch Head for Compression Machines

Code: [37-5951/09](#)



Flexible Hose

Code: [5038B0027](#)



Impact Printer Rs232 Serial Connection. Supplied Complete with 1 Paper Roll.

Code: [37-4859/01](#)



Standard Distance Piece - 100 mm Depth

Code: [37-5100](#)



Standard Distance Piece - 20 mm Depth

Code: [37-4980](#)



Standard Distance Piece - 50 mm Depth

Code: [37-5000](#)



Standard Distance Piece - 60 mm Depth

Code: [37-5020](#)



Standard Distance Piece - 80 mm Depth

Code: [37-5050](#)

Spares/Consumables



Pressure transducer, 0-700bar, 0.05 to 10v DC Output

Code: [6014A0062](#)

Alternatives



ADR Touch 1500 Compression Machine with Digital Readout.

Code: [36-0720/01](#)



Standard Distance Piece - 50 mm Depth

Code: [37-5000](#)

Product Group: [Distance Pieces](#)

Further Information

****Not available for sale in the USA****



Standard Distance Piece - 80 mm Depth

Code: [37-5050](#)

Product Group: [Distance Pieces](#)

Further Information

****Not available for sale in the USA****



Standard Distance Piece - 100 mm Depth

Code: [37-5100](#)

Product Group: [Distance Pieces](#)

Further Information

****Not available for sale in the USA****



Standard Concrete Test Hammer

Code: [35-1480](#)

Product Group: [Concrete Test Hammer, Surface Hardness](#)

The hammer is intended for testing the quality of concrete in finished structures such as buildings and bridges. Supplied complete with carrying case and carborundum stone, the hammer is suitable for testing concrete with compressive strengths of 10 to 70 N/mm².

Standards

ASTM C805

Specification

| | |
|--------------------|---|
| Body | Includes indicator scale, calibration curves. |
| Calibration Curves | Rebound number vs. compressive strength. |
| Rubbing Stone | Prepares test surface. |
| Accuracy | Within 15 %. |
| Carrying Case | Plastic. |
| Weight | Net 3 lbs. (1.4 kg). |

Accessories



Testing Anvil

Code: [35-1530](#)

Spares/Consumables



Rubbing Stone

Code: [35-1475/10](#)

Alternatives



Concrete Test Hammer - English

Code: [35-1475](#)



Ultrasonic Concrete Tester 110-240V 50/60Hz 1Ph

Code: 35-2302/09

Product Group: [Ultrasonic Detection](#), [Ultrasonic Concrete Test](#)

35-2302/09 is the most versatile Concrete Tester to date. It has all the functions of the classic Concrete Tester, but offers additional benefits.

Designed with laboratory use in mind, its compact size, rugged construction and optimized power consumption make it equally suitable for on-site use.

Along with the traditional transit time and pulse velocity measurement, 35-2302/09 offers path length measurement, perpendicular crack depth measurement and surface velocity measurement.

Optimized pulse shaping gives greater transmission range at lower voltage levels. This coupled with automated combination of the transmitter voltage and the receiver gain ensures an optimum received signal level, ensuring accurate and stable measurements.

The waveform can be viewed either via an external oscilloscope connection or directly on a connected PC screen.

Full remote control capability completes the package.

Complete with two 54 kHz transducers each with 3.6 metres of cable, coupling agent, carrying case and instruction manual.

Applications include pulse velocity determination, quality assessment and uniformity, modulus of elasticity measurement, curing status evaluation, crack depth estimation, assessment of fibre reinforced concrete.

Consists of display unit, 2 transducers (54 kHz), 2 BNC cables 1.5m, couplant, calibration rod, USB charger with USB-cable, 4x AA (LR6) batteries, data carrier with software, documentation and carrying case.

Standards

BS 1881-203, EN 12504-4, ASTM C597, D2845

Further Information

For 110 - 240 V AC, 50 - 60 Hz, 1 ph.

Specification

| | |
|------------------------------|--|
| Measuring range | Up to 15 m depending on concrete quality |
| Bandwidth | 20 to 500 kHz |
| Technology | Ultrasonic pulse velocity |
| Measuring resolution | 0.1 us |
| Pulse voltage UPV | 125 to 500 V |
| Receiver gain | 1x, 10x, 100x, auto |
| Pulse shape | Square wave |
| Nominal transducer frequency | 24-500 kHz |
| Number of channels | 1 |

Spares/Consumables



Ultrasound Couplant Supplied In 250ml bottle

Code: [35-2305](#)