



IF IT'S WORTH BUILDING, IT'S WORTH TESTING

This wishlist was generated on 24/04/2018, and contains the following Products:

26-2114/01

Digital Direct/Residual Shear Apparatus Complete with Lever Loading Assembly. 220-240V 50/60Hz 1Ph.

26-2132

Set of Weights 50 kg Slotted.

26-2181

Shear Box Assembly 60mm Sq.

26-2185

Specimen Cutter 60mm Sq.

26-2189

Specimen Extrusion Tool 60 mm sq.

27-1561

S-Type Load Cell 5 kN.for Use with Direct/ Residual Shear Machine. Fitted with 5 Pin Din Plug.

27-1689

Vertical Displacement Transducer Assembly 15mm Travel with 5 Pin Din Plug Bracket for Shear Box

27-1697

Horizontal Displacement Transducer Assembly 15mm Travel 5 Pin Din Plug Mounting Pillar

27-1793

DS7.2 Direct and Residual Shear Strength Program for Windows 7, 32/64 bit

26-2181/10

Porous Plate 60mm Sq.

26-2213

Shear Box Assembly 2.5 Inch Diameter

26-2213/10

Porous Plate 2.5 Inch Diameter

26-2217

Specimen Cutter 2.5 Inch Diameter.

26-2221

Specimen Extrusion Tool 2.5 Inch Diameter.

78-5457/01

Electronic Balance - 8 000 g x 0.1 g

78-5477/01

Electronic Balance - 16 000 g x 0.5 g

25-3700/01

MultiPlex 50 Load Frame

25-3650

Unconfined Compression Platens. for Use on Ele Load Frames Max Sample Dia 95mm.

25-7655

100 mm Two-Part Split Mould

25-7650

Two-Way Split Former 100mm Diameter.

27-1300/01

DSU Electronic Readout and Control System 220 - 240 V AC 50/60 Hz

27-1553

S-Type Load Cell 10 kN.for Triaxial Tests. Fitted with 5 Pin Din Plug.

27-1705

CBR Penetration Transducer 50mm Travel Fitted with 5 Pin Din Plug.

27-1293

Distance Piece Stainless Steel for Use with Submersible Load Cells and Axial Strain Transducers.

47-1460

Benkelman Beam

42-5310/01

Los Angeles Abrasion Machine with CE Safety Cabinet W/ Microswitches. 220-240V 50Hz 1Ph.

42-5305/10

Set of 12 Abrasive Charges EN)

42-1000/01

Buoyancy Balance 6Kg X 0.1G. Supplied with Support Frame Water Tank & Suspension Hook.

42-1005

Wire Basket Brass with Handle Nominal 6000Cm³ Capacity with 1.7mm Wire Mesh.

24-0545/01

Semi-Automatic Cone Penetrometer

24-0548

Penetration Test Cup.

24-0410

Liquid Limit Device BS with Counter. C/W Metal Grooving Tool & Test Gauge.

24-0417/01

Motorised Liquid Limit Device W/ Counter BS 220-240V 50Hz 1Ph.

24-0425

Grooving Tool and Gauge B.S.

24-0430

Glass Plate.

83-4170/01

Muffle Furnace

82-3320

Porcelain Crucible

81-0480

Crucible Tongs, Straight

81-0508

Heat-Resistent Gloves, With Gauntlet

24-2950

100ML Density Bottle with Perforated Stopper.



Digital Direct/Residual Shear Apparatus Complete with Lever Loading Assembly. 220-240V 50/60Hz 1Ph.

Code: 26-2114/01

Product Group: Direct/Residual Shear Apparatus,
Direct/Residual Shear Apparatus

- Microprocessor control
- Large on-board LCD screen display
- Direct entry via touch sensitive keyboard
- Rapid approach and return to start datum
- Fully variable speed, 0.00001 to 9.99999 mm/minute
- Accepts specimens up to 100 mm square

The ELE Direct Shear Apparatus accepts specimens 60 mm, 100 mm square or 2.5 inches in diameter. The use of a microprocessor controlled drive system and keyboard entry gives the apparatus a wide range of features that include pause and speed reset during test, RS 232C interface, operator programming of speed and control functions, self test diagnostics and many other features. A return to start datum provides a positive means of reversing the shearbox when either preparing for a new test or continuing with residual testing procedures.

Safety forward/reverse travel limit switches are fitted as standard and monitored through the electronics system control.

The electronics are housed in a modern moulded shroud, which includes a large LCD display and keyboard entry. The apparatus is enclosed in a robustly constructed case, has been designed for floor mounting and is supplied complete with carriage, loading hanger and 10:1 lever loading device.

Standards

ASTM D3080, AASHTO T236, BS 1377, EN 1997-2

Further Information

for 220 - 240 V AC, 50 - 60 Hz, 1 ph.

Specification

Sample Size

Accepts either 2.42", 2.5" diam.; 60 mm square samples using accessory shear box assemblies, not included.

Speed Range

Variable in either English or Metric units

Shear Force	between 0.000001"
Vertical Load	(0.00001 mm) to 0.399999"
	(9.99999 mm) per minute.
	1,100 lbf. (5.0 kN) maximum.
	2,200 lbf. (10.0 kN) using 10:1 lever ratio.
Dimensions	44.7" l. x 12 .6" w. x 49.6" h.
	(1,135 x 320 x 1,260 mm).
Weight	130 kg

Accessories



Clamped Boss Load Ring - 2.0 kN

Code: [78-0060](#)



Clamped Boss Load Ring - 3.0 kN

Code: [78-0160](#)



Clamped Boss Load Ring - 4.5 kN

Code: [78-0260](#)



Dial Gauge 10mm Travel X 0.002mm Divisions.

Code: [25-0440](#)



Digital Proving Ring, 1,000 lbs (4.5 kN)

Code: [78-0264](#)



Digital Proving Ring, 450 lbs (2.0 kN)

Code: [78-0064](#)



Horizontal Displacement Transducer Assembly 15mm Travel 5 Pin Din Plug Mounting Pillar

Code: [27-1697](#)



Mechanical Dial Indicator - 25 mm Range Clockwise Movement

Code: [88-4110](#)



S-Type Load Cell 5 kN.for Triaxial Tests. Fitted with 5 Pin Din Plug.

Code: [27-1551](#)



Set of Weights 50 kg Slotted.

Code: [26-2132](#)



Vertical Displacement Transducer Assembly 15mm Travel with 5 Pin Din Plug Bracket for Shear Box

Code: [27-1689](#)



Weight Set A

Code: [25-0535](#)



Weight Set B

Code: [25-0537](#)

Spares/Consumables



Dial Indicator - 1.0" Range

Code: [88-4100](#)



Electronic Digital Indicator, 0.600"/15 mm range

Code: [88-4210](#)



Vertical Dial Indicator, English

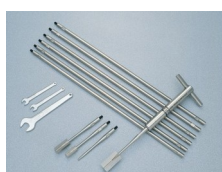
Code: [25-0445](#)

Alternatives



Digital Direct/Residual Shear Apparatus Complete with Lever Loading Assembly. 110-120V 50/60Hz 1Ph.

Code: [26-2114/02](#)



H60 Field Inspection Vane Tester 0-200Kpa In Carrying Case. includes calibration and certificates.

Code: [26-3335](#)



Hand Vane Tester

Code: [26-3346](#)



Laboratory Vane Apparatus with 4 Springs and 12.7mm Vane; Hand Operated.

Code: [26-2270](#)



Pocket Shearmeter with 3 Vanes 0 to 1Kgf/Cm2 X 0.5Kgf/Cm2.

Code: [26-2261](#)



Shear Box Assembly 100mm Sq.

Code: [26-2197](#)



Shear Box Assembly 2.5 Inch Diameter

Code: [26-2213](#)



Shear Box Assembly 60mm Sq.

Code: [26-2181](#)



Set of Weights 50 kg Slotted.

Code: [26-2132](#)

Product Group: [Application of Normal Stress](#)

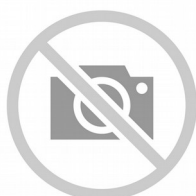
Normal stress is applied to the specimen through the lever loading device and the appropriate slotted weights

Accessories



Slotted Surcharge Weight 0.25 kg

Code: [26-2147](#)



Slotted Surcharge Weight 0.5 kg.

Code: [26-2145](#)



Slotted Surcharge Weight 1 kg.

Code: [26-2143](#)



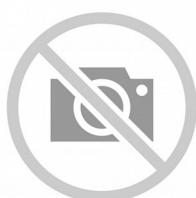
Slotted Surcharge Weight 10 kg.

Code: [26-2137](#)



Slotted Surcharge Weight 2 kg.

Code: [26-2141](#)



Slotted Surcharge Weight 5 kg.

Code: [26-2139](#)

Alternatives



Slotted Surcharge Weight 0.25 kg

Code: [26-2147](#)



Slotted Surcharge Weight 0.5 kg.

Code: [26-2145](#)



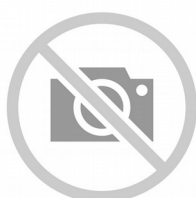
Slotted Surcharge Weight 1 kg.

Code: [26-2143](#)



Slotted Surcharge Weight 10 kg.

Code: [26-2137](#)



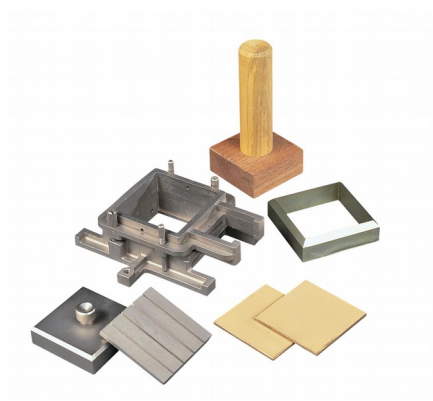
Slotted Surcharge Weight 2 kg.

Code: [26-2141](#)



Slotted Surcharge Weight 5 kg.

Code: [26-2139](#)



Shear Box Assembly 60mm Sq.

Code: [26-2181](#)

Product Group: [Shear Box Assemblies](#), [Shear Box Assemblies](#)

- Manufactured from corrosion resistant materials
- Sample size 60 x 60mm x 25mm high meeting BS 1377
- Incorporates PTFE faced box separation screws to reduce friction
- Supplied complete with upper and lower porous plates and loading pad
- Suitable for quick undrained or drained/residual tests

Standards

BS 1377, EN 1997-2, ASTM D3080, AASHTO T236

Further Information

All shearbox assemblies are designed to fit the carriage of 26-2114 series Digital Direct/Residual Shear Apparatus. They are supplied complete with three porous plates, one retaining plate and a loading pad. The three sizes supplied comply with the relevant requirements of BS 1377 and ASTM D3080. All assemblies can be used for quick shear tests or drained/residual shear tests.

Optional accessories are available including specimen cutters and extrusion tools.

Specification

Specimen area	60 x 60 mm
Specimen thickness	25 mm
Weight kg	2
Relevant standard	BS 1377

Accessories



Specimen Cutter 60mm Sq.

Code: [26-2185](#)



Specimen Extrusion Tool 60 mm sq.

Code: 26-2189

Spares/Consumables



Porous Plate 60mm Sq.

Code: 26-2181/10

Alternatives



2.42" Diameter Shear Box Assembly (California Type)

Code: 26-2223



Digital Direct/Residual Shear Apparatus Complete with Lever Loading Assembly. 110-120V 50/60Hz 1Ph.

Code: 26-2114/02



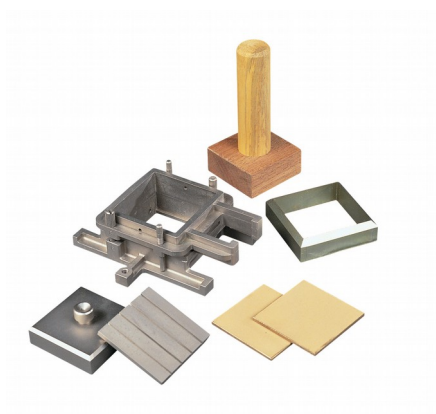
Digital Direct/Residual Shear Apparatus Complete with Lever Loading Assembly. 220-240V 50/60Hz 1Ph.

Code: 26-2114/01



Shear Box Assembly 100mm Sq.

Code: 26-2197



Specimen Cutter 60mm Sq.

Code: 26-2185

Product Group: Shearbox Assemblies- Accessories and Spares, Shearbox Assemblies- Accessories and Spares

Standards

ASTM D3080, AASHTO T236

Accessories



Specimen Cutter 100mmsq.

Code: 26-2201



Specimen Cutter 2.5 Inch Diameter.

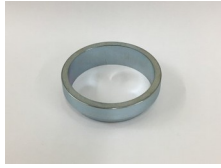
Code: 26-2217

Alternatives



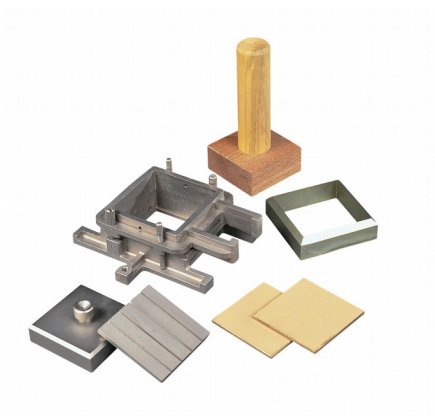
Specimen Cutter 100mmsq.

Code: 26-2201



Specimen Cutter 2.5 Inch Diameter.

Code: 26-2217



Specimen Extrusion Tool 60 mm sq.

Code: [26-2189](#)

Product Group: [Shearbox Assemblies- Accessories and Spares](#), [Shearbox Assemblies- Accessories and Spares](#)

Standards

ASTM D3080, AASHTO T236

Accessories



Specimen Extrusion Tool 2.5 Inch Diameter.

Code: [26-2221](#)

Alternatives



Specimen Extrusion Tool 2.5 Inch Diameter.

Code: [26-2221](#)



S-Type Load Cell 5 kN.for Use with Direct/Residual Shear Machine. Fitted with 5 Pin Din Plug.

Code: [27-1561](#)

Product Group: [Load Measurement, Measurement of Load \(Shear Stress\)](#)

- Repeatability better than $\pm 0.02\%$ of rated output
- Non-Linearity better than $\pm 0.03\%$ of rated output
- Supplied complete with 5-pin DIN type connector for connection to GDU

Ideally suited for a wide range of applications, ELE S-type load cells provide high accuracy and minimum deformation. Various models are available, with the necessary adaptors, for use with ELE Triaxial Load Frames, Multiplex 50/Marshall Test 50/CBR Test 50 and Direct Shear machine.

Standards

BS 1377, ASTM D3080

Accessories



S-Type Load Cell 5 kN.for Triaxial Tests. Fitted with 5 Pin Din Plug.

Code: [27-1551](#)

Alternatives



S-Type Load Cell 5 kN.for Triaxial Tests. Fitted with 5 Pin Din Plug.

Code: [27-1551](#)



Vertical Displacement Transducer Assembly 15mm Travel with 5 Pin Din Plug Bracket for Shear Box

Code: 27-1689

Product Group: [Displacement Measurement, Measurement of Horizontal and Vertical Movement, Displacement Transducers](#)

0 to 10 mm range. For use with Direct/Residual Shear Machines. •Ideally suited for use with GDU for accurate displacement measurements

- Models available for use in consolidation, shear, CBR and triaxial test applications
- Supplied complete with mounting hardware for specified products

Displacement Transducers are used in consolidation, shear, CBR and triaxial test applications for accurate displacement measurements. They are supplied complete with a 5-pin DIN type connector for direct connection to the GDU.

Specification

Construction	Fully encapsulated electronics, sealed in a stainless steel case
Excitation	12 V DC
Connector	5-pin DIN type
Mounting bracket	Included as standard
Weight kg	0.45
Construction	Fully encapsulated electronics, sealed in a stainless steel case.
Excitation	10vDC.
Connector	5-Pin DIN type.
Mounting Bracket	Included as standard.
Weight	Net 1 lb. (0.45 kg).

Accessories



Axial Strain Transducer Assembly 50mm Travel Fitted with 5 Pin Din Plug.

Code: 27-1617



Horizontal Displacement Transducer Assembly 15mm Travel 5 Pin Din Plug Mounting Pillar

Code: 27-1697

Spares/Consumables



CBR Displacement Transducer

Code: 27-1706

Alternatives



Axial Strain Transducer Assembly 50mm Travel Fitted with 5 Pin Din Plug.

Code: 27-1617



Horizontal Displacement Transducer Assembly 15mm Travel 5 Pin Din Plug Mounting Pillar

Code: [27-1697](#)



Horizontal Displacement Transducer Assembly 15mm Travel 5 Pin Din Plug Mounting Pillar

Code: [27-1697](#)

Product Group: [Displacement Measurement, Measurement of Horizontal and Vertical Movement, Displacement Transducers](#)

- Ideally suited for use with GDU for accurate displacement measurements
- Models available for use in consolidation, shear, CBR and triaxial test applications
- Supplied complete with mounting hardware for specified products

Displacement Transducers are used in consolidation, shear, CBR and triaxial test applications for accurate displacement measurements. They are supplied complete with a 5-pin DIN type connector for direct connection to the GDU.

Specification

Construction	Fully encapsulated electronics, sealed in a stainless steel case
Excitation	13 V DC
Connector	5-pin DIN type
Mounting bracket	Included as standard
Weight kg	0.45
Construction	Fully encapsulated electronics, sealed in a stainless steel case.
Excitation	10vDC.
Connector	5-Pin DIN type.
Mounting Bracket	Included as standard.
Weight	Net 1 lb. (0.45 kg).

Accessories



Axial Strain Transducer Assembly 50mm Travel Fitted with 5 Pin Din Plug.

Code: [27-1617](#)



Vertical Displacement Transducer Assembly 15mm Travel with 5 Pin Din Plug Bracket for Shear Box

Code: [27-1689](#)

Spares/Consumables



CBR Displacement Transducer

Code: [27-1706](#)

Alternatives



Axial Strain Transducer Assembly 50mm Travel Fitted with 5 Pin Din Plug.

Code: [27-1617](#)



Vertical Displacement Transducer Assembly 15mm Travel with 5 Pin Din Plug Bracket for Shear Box

Code: [27-1689](#)

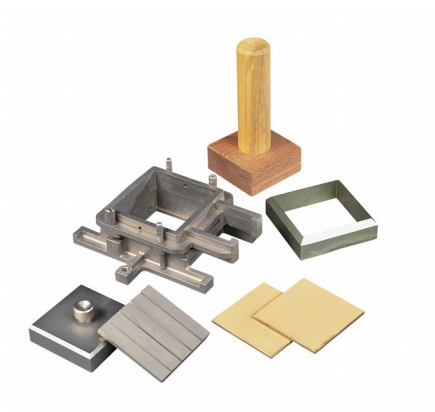


DS7.2 Direct and Residual Shear Strength Program for Windows 7, 32/64 bit

Code: [27-1793](#)

Product Group: [DS7.2 Direct/Residual Shear Software, Automatic Data Acquisition - Direct Shear, DS7.2](#)

This unique package provides test options for quick undrained or drained shear tests with the user selectable option of residual testing. Individual test results can be linked together to produce the Coulomb Envelope. Printouts and plots are available for sample description and basic test data such as moisture content, etc. Realtime plots of settlement, shear versus displacement and vertical displacement during shearing is readily available via the PC screen or printer.



Porous Plate 60mm Sq.

Code: [26-2181/10](#)

Product Group: [Shearbox Assemblies- Accessories and Spares](#), [Shearbox Assemblies- Accessories and Spares](#)

Standards

ASTM D3080, AASHTO T236

Spares/Consumables



2.42" Diameter Porous Stone

Code: [26-2223/10](#)



Porous Plate 2.5 Inch Diameter

Code: [26-2213/10](#)

Alternatives



2.42" Diameter Porous Stone

Code: [26-2223/10](#)



Porous Plate 2.5 Inch Diameter

Code: [26-2213/10](#)



Shear Box Assembly 2.5 Inch Diameter

Code: [26-2213](#)

Product Group: [Shear Box Assemblies](#), [Shear Box Assemblies](#)

- Manufactured from corrosion resistant materials
- Sample size 2.5 inch dia x 1 inch height meeting ASTM D3080
- Incorporates PTFE faced box separation screws to reduce friction
- Supplied complete with upper and lower porous plates and loading pad
- Suitable for quick undrained or drained/residual tests.

Standards

ASTM D3080, AASHTO T236

Further Information

All shearbox assemblies are designed to fit the carriage of 26-2114 series Digital Direct/Residual Shear Apparatus. They are supplied complete with three porous plates, one retaining plate and a loading pad. The three sizes supplied comply with the relevant requirements of BS 1377 and ASTM D3080. All assemblies can be used for quick shear tests or drained/residual shear tests.

Optional accessories are available including specimen cutters and extrusion tools.

Specification

Specimen area	1.5 inch diameter
Specimen thickness	1 inch
Weight kg	2.8
Relevant standard	ASTM D3080

Accessories



Specimen Cutter 2.5 Inch Diameter.

Code: [26-2217](#)



Specimen Extrusion Tool 2.5 Inch Diameter.

Code: 26-2221

Spares/Consumables



Porous Plate 2.5 Inch Diameter

Code: 26-2213/10

Alternatives



2.42" Diameter Shear Box Assembly (California Type)

Code: 26-2223



Digital Direct/Residual Shear Apparatus Complete with Lever Loading Assembly. 110-120V 50/60Hz 1Ph.

Code: 26-2114/02



Digital Direct/Residual Shear Apparatus Complete with Lever Loading Assembly. 220-240V 50/60Hz 1Ph.

Code: 26-2114/01



Porous Plate 2.5 Inch Diameter

Code: [26-2213/10](#)

Product Group: [Shear Box Assemblies](#), [Shearbox Assemblies- Accessories and Spares](#)

Standards

ASTM D3080, AASHTO T236

Spares/Consumables



2.42" Diameter Porous Stone

Code: [26-2223/10](#)



Porous Plate 60mm Sq.

Code: [26-2181/10](#)

Alternatives



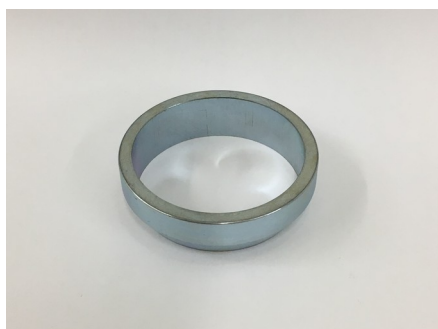
2.42" Diameter Porous Stone

Code: [26-2223/10](#)



Porous Plate 60mm Sq.

Code: [26-2181/10](#)



Specimen Cutter 2.5 Inch Diameter.

Code: [26-2217](#)

Product Group: [Shearbox Assemblies- Accessories and Spares](#), [Shearbox Assemblies- Accessories and Spares](#)

Standards

ASTM D3080, AASHTO T236

Accessories



Specimen Cutter 100mmsq.

Code: [26-2201](#)



Specimen Cutter 60mm Sq.

Code: [26-2185](#)

Alternatives



Specimen Cutter 100mmsq.

Code: [26-2201](#)



Specimen Cutter 60mm Sq.

Code: 26-2185



Specimen Extrusion Tool 2.5 Inch Diameter.

Code: [26-2221](#)

Product Group: [Shearbox Assemblies- Accessories and Spares](#), [Shearbox Assemblies- Accessories and Spares](#)

Standards

ASTM D3080, AASHTO T236

Accessories



Specimen Extrusion Tool 60 mm sq.

Code: [26-2189](#)

Alternatives



Specimen Extrusion Tool 60 mm sq.

Code: [26-2189](#)



Electronic Balance - 8 000 g x 0.1 g

Code: [78-5457/01](#)

Product Group: [Electronic Balances](#)

Further Information

****Not available for sale in the USA****

Specification

Capacity resolution	8000 g x 0.1 g
Pan size	225 x 275 mm
Mains and battery	Yes
Dimensions (w x d x h)	315 x 355 x 110 mm
Weight	4 kg
Weighing units	g, kg, lb, lb:oz, oz
Repeatability	0.1 g



Electronic Balance - 16 000 g x 0.5 g

Code: [78-5477/01](#)

Product Group: [Electronic Balances](#)

Further Information

****Not available for sale in the USA****

Specification

Capacity resolution	16000 g x 0.5 g
Pan size	225 x 300 mm
Mains and battery	Yes
Dimensions (l x w x h)	340 x 320 125 mm
Weight	4 kg



MultiPlex 50 Load Frame

Code: [25-3700/01](#)

Product Group: [Data Logging with the DSU](#), [CBR Load Frames](#), [Marshall Load Frames](#), [Triaxial Load Frames](#), [Data Logging with the DSU](#)

Compact bench mounting load frame designed for performing laboratory CBR, unconfined compression, Quick Undrained Triaxial and Marshall Stability Tests. Has a variable speed of 0.5 to 50.8mm per minute and features rapid approach of platen.

Standards

EN 12697-34, BS 598, BS 1377, BS 1924, ASTM D1883, EN 12697-23, EN 12697-24, EN 13286-47, AASHTO T193, ASTM D2850, ASTM D4767, AASHTO T296, AASHTO T297, ASTM D6927

Further Information

****NOT AVAILABLE FOR SALE IN THE USA****

Specification

Dimensions (l x w x h)	550 x 400 x 1470 mm
Max vertical clearance	800 mm
Horizontal clearance	265 mm
Platen diameter	133 mm
Platen travel	100 mm
Platen speed range	0.5 to 50.8 mm/min
Rapid approach speed	40 mm/min
Weight kg	100, (shipping 113 kg)

Accessories



50kN Clamped Boss Load Ring

Code: [78-0860](#)



50kN S-type Load Cell

Code: [27-1559](#)



Bracket and Adaptor. Dual Purpose Mounting Bracket for CBR Penetration Gauges EL24-9184/EL24-9186

Code: [24-9188](#)



Cbr Penetration Piston (Adjustable).

Code: [24-9183](#)



CBR Penetration Transducer 50mm Travel Fitted with 5 Pin Din Plug.

Code: [27-1705](#)



Clamped Boss Load Ring - 10.0 kN

Code: [78-0460](#)



Clamped Boss Load Ring - 2.0 kN

Code: [78-0060](#)



Clamped Boss Load Ring - 28.0 kN

Code: [78-0760](#)



Clamped Boss Load Ring - 3.0 kN

Code: [78-0160](#)



Clamped Boss Load Ring - 4.5 kN

Code: [78-0260](#)



Penetration Dial Gauge BS

Code: [24-9186](#)



Penetration Piston

Code: [24-9182](#)



Penetration/Swell Dial Gauge ASTM.

Code: [24-9184](#)

Alternatives



Cbr-Test 50 Machine 50kN Capacity BS and ASTM Supplied with Stabilising Bar.

Code: [24-9150/06](#)



Cbr-Test 50 Machine 50kN Capacity BS and ASTM Supplied with Stabilising Bar.

Code: [24-9150/01](#)



Digital Tritest 50 Load Frame

Code: [25-3518/01](#)



Unconfined Compression Platens. for Use on Ele Load Frames Max Sample Dia 95mm.

Code: [25-3650](#)

Product Group: [Unconfined Compression Tester, Hand-Operated](#)

Unconfined Compression Platens

Standards

ASTM D2166, AASHTO T208, BS 1377, BS 1924, EN 13286-47, ASTM D1883, AASHTO T193



100 mm Two-Part Split Mould

Code: [25-7655](#)

Product Group: [Two-Part Split Mould](#)



Two-Way Split Former 100mm Diameter.

Code: [25-7650](#)

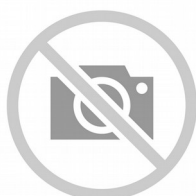
Product Group: [Two-way Split Formers](#), [Two-Way Split Formers](#)

Accessories



1.4" Two-Way Split Formers

Code: [25-4320](#)



2.8" Two-Way Split Formers

Code: [25-6680](#)



Two-Way Split Former 70mm Diameter.

Code: [25-6500](#)

Alternatives



1.4" Two-Way Split Formers

Code: [25-4320](#)



2.8" Two-Way Split Formers

Code: [25-6680](#)



Two-Way Split Former 70mm Diameter.

Code: [25-6500](#)



DSU Electronic Readout and Control System 220 - 240 V AC 50/60 Hz

Code: 27-1300/01

Product Group: [Data Logging with the DSU](#), [Electronic Instrumentation](#), [Electronic Instrumentation](#), [Data Logging with the DSU](#)

· Download the full brochure here
[[/Page/catalogue-download/NTRmZS9UaGUgTkVXIERTVSBVU0EucGRm](#)]

- 4 channel automatic control and data-logging unit
- Automatic, dual-frame control
- Performs CBR, Marshall, Unconfined Compression, Direct and Residual Shear, One-Dimensional Consolidation and Unconsolidated Undrained tests
- LAN connection - software can be running anywhere on your server
- Never lose data from power fails - 2 gigabytes of non-volatile memory
- Extended warranty

The Data System Unit (DSU) is a versatile instrument designed to accommodate the general logging requirements of geotechnical and materials testing engineers. Its intelligent interface allows the user to work with a range of different sensors.

Further Information

The DSU has two distinct modes of operation. The first is referred to as DS mode (DataSystem) for operation with ELE International's established DS7 geotechnical testing software.

DS MODE

- Up to four one dimensional consolidation tests
- Up to two CBR tests
- One direct/residual shear test
- One triaxial quick un-drained test

DU MODE

- Up to two Marshall tests
- Up to two CBR tests
- Up to two Unconfined compression tests
- Automatic frame control

OVERVIEW

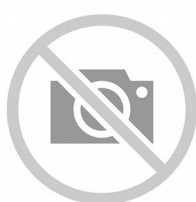
- Touch Screen data entry for standalone operation, Marshall/CBR/Quick un-drained

- Automatic single and dual frame control (with multiplex 50 frame)
- Log memory of 2 gigabytes
- Non-volatile memory
- Ethernet TCPIP link and serial comms support
- Market leading signal stability
- Certificate and manual calibration features

Become a member of the ELE International web site, add this new product to a wishlist to receive a quote! Click here [[Login](#)]

This product is now available in the USA and Canada!

Accessories



Cable, Safety/ID

Code: [27-1300/11](#)



Dual Frame Comms Cable

Code: [27-1300/10](#)



PC Cable

Code: [27-1300/12](#)

Alternatives



DSU Electronic Readout and Control System 110 V AC 60 Hz

Code: [27-1300/02](#)



Marshall Test 50

Code: [45-6810/01](#)



Marshall Test 50

Code: [45-6810/06](#)



S-Type Load Cell 10 kN.for Triaxial Tests. Fitted with 5 Pin Din Plug.

Code: [27-1553](#)

Product Group: [Load Measurement, Load Measurement](#)

- Repeatability better than $\pm 0.02\%$ of rated output
- Non-Linearity better than $\pm 0.03\%$ of rated output
- Supplied complete with 5-pin DIN type connector for connection to GDU

Ideally suited for a wide range of applications, ELE S-type load cells provide high accuracy and minimum deformation. Various models are available, with the necessary adaptors, for use with ELE Triaxial Load Frames, Multiplex 50/Marshall Test 50/CBR Test 50 and Direct Shear machine.

Accessories



S-Type Load Cell 5 kN.for Triaxial Tests. Fitted with 5 Pin Din Plug.

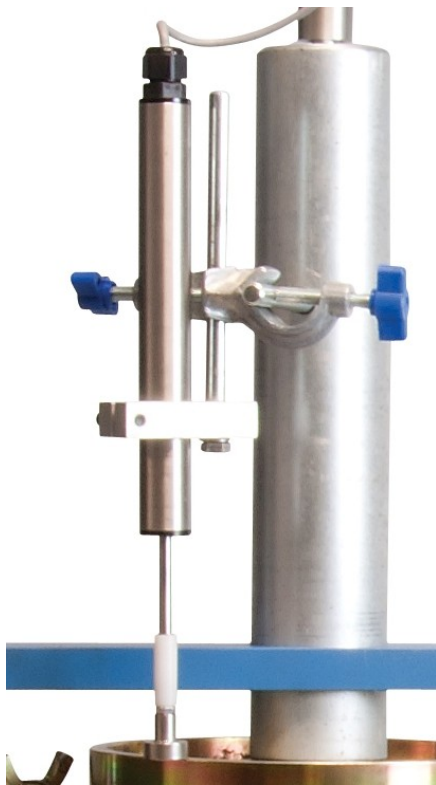
Code: [27-1551](#)

Alternatives



S-Type Load Cell 5 kN.for Triaxial Tests. Fitted with 5 Pin Din Plug.

Code: [27-1551](#)



CBR Penetration Transducer 50mm Travel Fitted with 5 Pin Din Plug.

Code: [27-1705](#)

Product Group: [Penetration Measurement](#),
[Penetration Measurement](#)

- Ideally suited for use with GDU for accurate displacement measurements
- Models available for use in consolidation, shear, CBR and triaxial test applications
- Supplied complete with mounting hardware for specified products

Displacement Transducers are used in consolidation, shear, CBR and triaxial test applications for accurate displacement measurements. They are supplied complete with a 5-pin DIN type connector for direct connection to the GDU.

Specification

Construction	Fully encapsulated electronics, sealed in a stainless steel case
Excitation	14 V DC
Connector	5-pin DIN type
Mounting bracket	Included as standard
Weight kg	0.45



Distance Piece Stainless Steel for Use with Submersible Load Cells and Axial Strain Transducers.

Code: [27-1293](#)

Product Group: [Load Measurement](#), [Load Measurement](#), [Submersible Load Transducers](#)

Required when using submersible load cells.

Accessories



Submersible Load Transducer Assembly 10kN Capacity In Compression.

Code: [27-1575](#)



Submersible Load Transducer Assembly 5kN Capacity In Compression.

Code: [27-1573](#)

Alternatives



Submersible Load Transducer Assembly 10kN Capacity In Compression.

Code: [27-1575](#)



Submersible Load Transducer Assembly 5kN Capacity In Compression.

Code: [27-1573](#)



Benkelman Beam

Code: 47-1460

Product Group: Benkelman Beam, Benkelman Beam

Standards

AASHTO T256

Further Information

Complete with Dial Gauge 25 mm travel x 0.02 mm divisions.

Specification

Dimensions: Main Body (length), Arm (telescopic) extended, Operating length fully extended	1397 mm, 2400 mm, 3700 mm
Beam fulcrum ratio	2:1
Weight	15.9 kg
Main Body	55 " (1,397 mm) long, black finish aluminum.
Probe Beam	Aluminum, 8 ft. (2.4 m) long, telescopes into case for storage.
Probe Fulcrum	Ball pivot bearing, gives lever ratio of 2:1.
Vibrator System	Operating switch mounted on top of instrument section (requires 4 "D" size batteries).
Dial Indicators	Compensated for direct reading (not included).
Leveling Wheel	Adjusts beams to proper elevation.
Open Length	12 ft. (3.7 m) l.
Weight	Net 29 lbs. (13.2 kg).

Accessories



Vertical Dial Indicator 1" range x 0.002" divisions

Code: [47-1460/12](#)



Vertical Dial Indicator 25 mm range x 0.02 mm divisions

Code: [47-1460/14](#)



Los Angeles Abrasion Machine with CE Safety Cabinet W/ Microswitches. 220-240V 50Hz 1Ph.

Code: [42-5310/01](#)

Product Group: [Los Angeles Abrasion Machine](#)

The machine consists of a closed hollow cylindrical steel drum rotating around its horizontal axis on ball bearing units mounted on a sturdy base framework. Also the full enclosure ensures noise is minimized.

The drum is driven at a speed of between 30 - 33 rpm via an enclosed belt drive arrangement from an electric motor/gearbox unit situated on the base frame. Inside the drum a full length steel shelf is attached, accessed by a dust-proof opening.

The cylinder incorporates a removable internal shelf, one shelf position is provided to meet the requirements of both the ASTM and EN test standards.

Controls are located easily on the right-hand side of the machine at convenient operator height.

Start and stop push buttons and a subtracting revolution counter allows the user to preset the number of revolutions before an automatic stop.

Standards

EN 1097-2, ASTM C131, ASTM C535, NF P18-573

Further Information

****NOT AVAILABLE FOR SALE IN THE USA****

Accessories

Set of 12 Abrasive Charges (ASTM).

Code: [42-5300/10](#)



Set of 12 Abrasive Charges EN)

Code: [42-5305/10](#)



Alternatives



Los Angeles Abrasion Machine Meets ASTM and European Standards. 220-240V 50Hz 1Ph.

Code: [42-5315/01](#)



Set of 12 Abrasive Charges EN)

Code: [42-5305/10](#)

Product Group: [Los Angeles Abrasion Machine](#)

EN Set of 12.

Standards

EN 1097-2, ASTM C131, ASTM C535

Further Information

****NOT AVAILABLE FOR SALE IN THE USA****



Buoyancy Balance 6Kg X 0.1G. Supplied with Support Frame Water Tank & Suspension Hook.

Code: [42-1000/01](#)

Product Group: [Particle Density \(specific gravity\) and Water Absorption for Coarse Aggregates](#)

The buoyancy balance system developed by ELE consists of a rigid support frame, incorporating a water tank mounted on a platform. A mechanical lifting device is used to raise the water tank through the frame height immersing the specimen suspended below the balance. The balance supplied may also be used as a standard weighing device, thus providing a versatile and comprehensive weighing system in the laboratory. 6000 g x 0.1 g supplied with frame, water tank and suspension hook.

Standards

EN 1097-6, EN 12697-6, BS 812, ASTM C127, AASHTO T85

Further Information

NOT AVAILABLE FOR SALE IN THE USA

For 220 - 240 V AC, 50 - 60 Hz, 1 ph.

Accessories



200 mm Diameter Lid

Code: [79-0010](#)



200 mm Diameter Receiver

Code: [79-0020](#)



200mm Dia BS Sieve 31.5mm Perforated Plate.

Code: [79-1630](#)



200mm Dia BS Sieve 4.00mm Stainless Steel Mesh.

Code: [79-0310](#)



200mm Dia BS Sieve 63 Mic Stainless Steel Mesh.

Code: [79-0070](#)



200mm Dia BS Sieve 63.0mm Perforated Plate.

Code: [79-1670](#)



Digital Pocket Thermometer

Code: [82-5420](#)



Sample Container - Tinned Steel 10 litres

Code: [81-3060](#)



Sample Tray - 406 x 406 x 50 mm

Code: [81-4030](#)



Wire Basket Brass with Handle Nominal 6000Cm³ Capacity with 1.7mm Wire Mesh.

Code: [42-1005](#)



Wire Basket Brass with Handle Nominal 6000Cm³ Capacity with 1.7mm Wire Mesh.

Code: 42-1005

Product Group: Particle Density (specific gravity) and
Water Absorption for Coarse Aggregates

For BS 812 Relative Density. 200 mm diameter x 190
mm deep, 1.70 mm wire mesh.

Standards

EN 1097-6, EN 12697-6, BS 812, ASTM C127, AASHTO T85

Further Information

****NOT AVAILABLE FOR SALE IN THE USA****



Semi-Automatic Cone Penetrometer

Code: [24-0545/01](#)

Product Group: [Semi-Automatic Cone Penetrometer](#),
[Semi-Automatic Cone Penetrometer](#)

Bench mounted apparatus to determine the liquid limit of soils to BS1377. This method is applicable to a wide range of soils. The apparatus is fitted with a 150mm diameter dial indicator for direct reading of penetration. Supplied complete with 30deg, 30mm long test cone. Manufactured from stainless steel and includes adjustable levelling feet.

Incorporates Digital Automatic controller, which releases the plunger head and ensures free falling of the penetration device during the test. The time set is displayed by a bright easy to read display.

Standards

BS 1377, BS 1924-2, EN 1997-2

Specification

Dial Indicator	150 mm diameter graduated in 400 x 0.1 mm divisions. Indicator incorporates a friction/gear system.
Height	Adjustable using rapid integral clamping mechanism.
Cone Release Cone	Semi-Automatic 1 x 30°, 35 mm test cone included.
Base	Cast aluminum with adjustable leveling feet.
Weight	Net 19 lbs. (8.64 kg).

Accessories



Penetration Test Cup.

Code: [24-0548](#)



Test Gauge for Checking Condition of Cone Point.

Code: [24-0546](#)

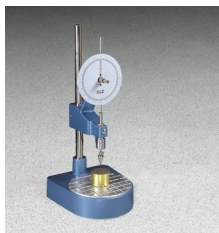
Spares/Consumables



Penetration Test Cone

Code: [24-0544](#)

Alternatives



Cone Penetrometer. Complete with Stainless Steel Test Cone.

Code: [24-0540](#)



Penetration Test Cup.

Code: [24-0548](#)

Product Group: [Cone Penetrometer Method](#), [Cone Penetrometer](#)

Brass construction, 55mm dia x 40mm depth to fit BS1377

Standards

BS 1377-2



Liquid Limit Device BS with Counter. C/W Metal Grooving Tool & Test Gauge.

Code: [24-0410](#)

Product Group: [Casagrande Method](#)

With revolution counter. Complete with metal grooving tool and test gauge.

Standards

BS 1377-2

Accessories



Glass Plate.

Code: [24-0430](#)



Grooving Tool and Gauge B.S.

Code: [24-0425](#)

Alternatives



Motorised Liquid Limit Device W/ Counter BS 220-240V 50Hz 1Ph.

Code: [24-0417/01](#)



Motorised Liquid Limit Device W/ Counter BS 220-240V 50Hz 1Ph.

Code: [24-0417/01](#)

Product Group: [Casagrande Method](#)

Complete with revolution counter and motor.

Standards

BS 1377-2

Accessories



Glass Plate.

Code: [24-0430](#)



Grooving Tool and Gauge B.S.

Code: [24-0425](#)

Alternatives



Liquid Limit Device BS with Counter. C/W Metal Grooving Tool & Test Gauge.

Code: [24-0410](#)



Grooving Tool and Gauge B.S.

Code: [24-0425](#)

Product Group: [Casagrande Method](#)

Constructed to British Standards.

Standards

BS 1377-2



Glass Plate.

Code: [24-0430](#)

Product Group: [Casagrande Method, Determination of Plastic Limit](#)

500 mm square x 10 mm thick.

Standards

BS 1377-2



Muffle Furnace

Code: 83-4170/01

Product Group: Furnaces, Loss-on-Ignition,
Loss-on-Ignition

The unique design of oven door for safe and easy operation to ensure that the high-temperature hot gas will not escape from inside the oven.

Inert gas inlet and outlet reserved in the chamber.

Micro-computer PID controller: easy operation, accurate, reliable and safe control.

Inside lining of fire-door and box panel are both made of stainless steel materials and are corrosion-resistance and free deformation under high temperature.

Light chamber for durable service (refractory-brick chamber and ceramic-fiber chamber are optional).

With excellent door seal, thermal loss is minimised and temperature evenness is increased in the chamber.

Standards

EN 196-2, EN 459-2, EN 13454-2, BS 1016-4, ISO 344, ISO 1171, ASTM D2361, ASTM D2795, ASTM D3714

Specification

Work chamber dimensions (l x w x h)	300 x 200 x 120 mm
Capacity	7 litres
Maximum temperature	1200 °C
Electrical supply	220 – 240 V AC, 50 - 60 Hz, 1 ph
Power supply	5 KW
Weight	130 kg

Spares/Consumables



Controller, for use in 83-4170/01

Code: [83-4170/11](#)



Element heating for use in 83-4170

Code: [83-4170/14](#)



Element/Chamber complete, heating, for use in 83-4170/01

Code: [83-4170/12](#)



Refractory brick for 83-4170/01

Code: [83-4170/13](#)



Thermostat, KGrade, 370 long, dia 2.5, for 83-4170/01

Code: [83-4170/10](#)

Alternatives



Heat of Hydration Apparatus

Code: [38-4600/06](#)



Heat of Hydration Apparatus

Code: [38-4600/01](#)



Rotatest 1500

Code: [45-3810/01](#)



Rotatest 3000

Code: [45-3815/01](#)



Porcelain Crucible

Code: [82-3320](#)

Product Group: [Loss-on-Ignition, Bottles and Crucibles](#)

30ml capacity complete with lid.

Further Information

****NOT AVAILABLE FOR SALE IN THE USA****

Alternatives



Heat of Hydration Apparatus

Code: [38-4600/06](#)



Heat of Hydration Apparatus

Code: [38-4600/01](#)



Crucible Tongs, Straight

Code: [81-0480](#)

Product Group: [Miscellaneous Laboratory Hardware](#)

Further Information

****NOT AVAILABLE FOR SALE IN THE USA****



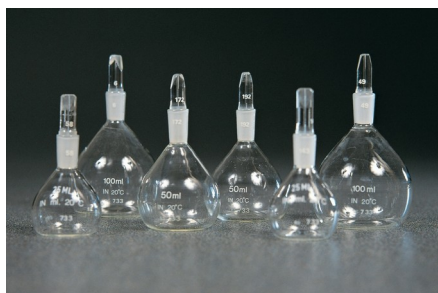
Heat-Resistant Gloves, With Gauntlet

Code: [81-0508](#)

Product Group: [Miscellaneous Laboratory Hardware](#)

Further Information

****NOT AVAILABLE FOR SALE IN THE USA****



100ml Density Bottle with Perforated Stopper.

Code: [24-2950](#)

Product Group: [Particle Density: Pyknometer Methods](#)

Supplied complete with capillary vent stopper.
Gay-Lussac type.

Standards

ASTM C128, AASHTO T84

Accessories



50ml Density Bottle with Perforated Stopper.

Code: [24-2900](#)



Density Bottle 25ml.

Code: [24-2890](#)

Alternatives



50ml Density Bottle with Perforated Stopper.

Code: [24-2900](#)



Density Bottle 25ml.

Code: [24-2890](#)