



IF IT'S WORTH BUILDING, IT'S WORTH TESTING

This wishlist was generated on 24/04/2018, and contains the following Products:

25-0402

Consolidation Frame One Dimensional Consolidation Incremental Loading Device.

25-0408

Set of Weights 100Kg Total Weight.

25-0479

Consolidation Cell Complete 2.5 Inch Diameter Sample. Inc. Porous Discs and Cutting Ring.

25-0485

Calibration Disc 2.5 Inch Cell

27-1300/01

DSU Electronic Readout and Control System 220 - 240 V AC 50/60 Hz

27-1649

Consolidation Transducer Assembly 10mm Travel Fitted with 5 Pin Din Plug.

27-1773

DS7.2 One-Dimensional Consolidation Program for Windows 7, 32/64 bit

25-0479/13

2.5 Inch Dia Upper and Lower Porous Stones for Use on EL25-0479 Series Cell.

80-0200/01

ELE Sieve Shaker

46-4100/01

Loss on Heat/Thin-Film Oven 220-240V 50/60 Hz

46-3310/01

Cleveland Flash Cup Apparatus

46-4605

BS/EN Ring and Ball Apparatus

46-4825/01

Electrical Hotplate with Integral Magnetic Stirrer

82-5272

Thermometer

38-0320/01

Air Compressor

45-3815/01

Rotatest 3000

36-5125/01

ADR Touch Control Pro 2000 Auto Compression Machine

37-5050

Standard Distance Piece - 80 mm Depth

37-5100

Standard Distance Piece - 100 mm Depth

37-4980

Standard Distance Piece - 20 mm Depth

37-6130

100kN Flexural (Beams) Frame. Supplied Without Specimen Bearers and Fitting Kit.

37-6131

BS 1881 Specimen Bearer Assembly 38mm Dia X 160mm Length.

37-6135/01

100 kN Flexural Fitting Kit ADR Auto for 220 - 240 V AC, 50 Hz, 1 ph

37-6133

Ball Seating Assembly 150mm Dia Platens.

37-5625

6x12 Concrete Cyl. Compressometer/Extensiometer - English

34-0192

Slump Test Set BS & ASTM. C/W Slump Cone Base Plate Steel Rule Tamping Rod & Funnel.

38-2695

Pocket Concrete Penetrometer

34-4570

150mm Cube Mould 4-Part Clamp Type. Cast Iron Construction. BS EN Compliant.

34-4520

100mm Cube Mould 4-Part Clamp Type. Cast Iron Construction. BS EN Compliant.

34-6431/01

Vibrating Poker 22mm Dia Tip 250mm Long. 220-240V 50/60Hz 1Ph.

78-5457/01

Electronic Balance - 8 000 g x 0.1 g

78-1250/01

225 Litre Drying Oven

38-2010

Vicat Frame

38-2110

EN Initial and Final Set Needle

38-2200

Vicat Mould

38-0620

Pure Mineral Oil 1 Litre Bottle.

38-0645

Reference Cement

38-0650

Filter Papers

38-1000

Blaine Air Permeability Apparatus

81-0518

Timer Clock

35-1500

Advanced SilverSchmidt Concrete Test Hammer

35-2302/09

Ultrasonic Concrete Tester 110-240V 50/60Hz 1Ph

35-1450

Windsor HP Probe System



Consolidation Frame One Dimensional Consolidation Incremental Loading Device.

Code: 25-0402

Product Group: Consolidation Apparatus, Table Top Consolidation Apparatus

- High capacity - 8800 kPa on 50 mm diameter specimens using 11:1 beam ratio
- Triple beam ratio, 9:1, 10:1, 11:1
- Compact unit ensures maximum space saving

The ELE Oedometer is rigidly constructed to ensure minimum frame distortion. The frame is designed to load the specimen through a yoke assembly and one of three alternative beam ratios. The beam is fitted with a counterbalance weight and beam support jack. The cell platform will accept the complete range of ELE consolidation cells and is fitted with a central spigot to ensure accurate centring of the cell under the loading yoke. Dimensions without hanger 711 x 203 x 508 mm (l x w x h). Weight 24 kg.

Standards

ASTM D2435, ASTM D4546, AASHTO T216, ASTM D3877, BS 1377-5

Further Information

Supplied without dial gauge and weights.

Specification

Load Capacity	48 tons/sq. ft. (5,14 8 kPa) on 2.5" (63 mm) diam. samples.
Loading Beam	Cast aluminum; counterbalanced; 9:1,10:1 and 11 :1 ratios.
Frame	Cast aluminum; integral beam support jack; plated steel and platform.
Dimensions	203 x 711 x 508 mm, (8" w. x 28" d. x 20" h) . excluding weight hanger.
Weight	24 KG

Accessories



16 Ton Weight Set

Code: [25-0544](#)



2.416" Fixed Ring Consolidometer

Code: [25-0480](#)



2.5" Floating Ring Consolidometer

Code: [25-0530](#)



Consolidation Cell Complete 2.5 Inch Diameter Sample. Inc. Porous Discs and Cutting Ring.

Code: [25-0479](#)



Consolidation Cell Complete 50mm Diameter Sample.

Code: [25-0455](#)



Consolidation Cell/ Oedometer Complete 75mm Diameter Sample

Code: [25-0503](#)



Floor Mounting Stand.

Code: [25-0429](#)



Mechanical Dial Indicator - 0.4" Range

Code: [88-4070](#)



Mechanical Dial Indicator - 1.0" Range Counter Clockwise Movement

Code: [88-4120](#)



Mechanical Dial Indicator - 10 mm Range

Code: [88-4080](#)



Mechanical Dial Indicator - 25 mm Range Counter Clockwise Movement

Code: [88-4130](#)



Set of Weights 100Kg Total Weight.

Code: [25-0408](#)



Weight Set A

Code: [25-0535](#)



Weight Set B

Code: [25-0537](#)

Spares/Consumables



Electronic Digital Indicator, 0.600"/15 mm range

Code: [88-4210](#)

Alternatives



Pneumatic Consolidation Apparatus

Code: [25-0560](#)



Set of Weights 100Kg Total Weight.

Code: [25-0408](#)

Product Group: [Consolidation Apparatus](#)

9 x 10 kg, 1 x 5 kg, 2 x 2 kg, 1 x 1 kg.

Standards

ASTM D2435, ASTM D4546, AASHTO T216, ASTM D3877, BS 1377-5



Consolidation Cell Complete 2.5 Inch Diameter Sample. Inc. Porous Discs and Cutting Ring.

Code: [25-0479](#)

Product Group: [Table Top Consolidation Apparatus](#), [ASTM/AASHTO consolidation cells and accessories](#), [Pneumatic Consolidation Apparatus](#), [Fixed Ring Consolidation](#)

Standards

ASTM D2435, ASTM D4546, AASHTO T216, ASTM D3877

Specification

Application	ASTM
Specimen Dia	2.5 inch
Specimen area	4.909 inch ²
Beam ratio	10:1
Load kg	1.55
Stress	1000 lbf/ft ²
Typical max stress	103 200 lbf/ft ²
Stress for 1 kg m ²	645 lbf/ft ²

Accessories



2.5" Floating Ring Consolidometer

Code: [25-0530](#)



Calibration Disc 2.5 Inch Cell

Code: [25-0485](#)



Consolidation Cell Complete 50mm Diameter Sample.

Code: [25-0455](#)



Consolidation Cell/ Oedometer Complete 75mm Diameter Sample

Code: [25-0503](#)

Spares/Consumables



2.5 Inch Dia Upper and Lower Porous Stones for Use on EL25-0479 Series Cell.

Code: [25-0479/13](#)



Cutting Ring for 25-0479

Code: [25-0482](#)

Alternatives



2.5" Floating Ring Consolidometer

Code: [25-0530](#)



Calibration Disc 2.5 Inch Cell

Code: [25-0485](#)



Consolidation Cell Complete 50mm Diameter Sample.

Code: [25-0455](#)



Consolidation Cell/ Oedometer Complete 75mm Diameter Sample

Code: [25-0503](#)



Calibration Disc 2.5 Inch Cell

Code: [25-0485](#)

Product Group: [ASTM/AASHTO consolidation cells and accessories](#), [Fixed Ring Consolidation](#)

Standards

ASTM D2435, ASTM D4546, AASHTO T216, ASTM D3877

Accessories



Consolidation Cell Complete 2.5 Inch Diameter Sample. Inc. Porous Discs and Cutting Ring.

Code: [25-0479](#)

Alternatives



Consolidation Cell Complete 2.5 Inch Diameter Sample. Inc. Porous Discs and Cutting Ring.

Code: [25-0479](#)



DSU Electronic Readout and Control System 220 - 240 V AC 50/60 Hz

Code: [27-1300/01](#)

Product Group: [Data Logging with the DSU](#), [Electronic Instrumentation](#), [Electronic Instrumentation](#), [Electronic Instrumentation](#), [Data Logging with the DSU](#)

· Download the full brochure here
[[/Page/catalogue-download/NTRmZS9UaGUgTkVXIERTVSBVU0EucGRm](#)]

- 4 channel automatic control and data-logging unit
- Automatic, dual-frame control
- Performs CBR, Marshall, Unconfined Compression, Direct and Residual Shear, One-Dimensional Consolidation and Unconsolidated Undrained tests
- LAN connection - software can be running anywhere on your server
- Never lose data from power fails - 2 gigabytes of non-volatile memory
- Extended warranty

The Data System Unit (DSU) is a versatile instrument designed to accommodate the general logging requirements of geotechnical and materials testing engineers. Its intelligent interface allows the user to work with a range of different sensors.

Further Information

The DSU has two distinct modes of operation. The first is referred to as DS mode (DataSystem) for operation with ELE International's established DS7 geotechnical testing software.

DS MODE

- Up to four one dimensional consolidation tests
- Up to two CBR tests
- One direct/residual shear test
- One triaxial quick un-drained test

DU MODE

- Up to two Marshall tests
- Up to two CBR tests
- Up to two Unconfined compression tests
- Automatic frame control

OVERVIEW

- Touch Screen data entry for standalone operation, Marshall/CBR/Quick un-drained

- Automatic single and dual frame control (with multiplex 50 frame)
- Log memory of 2 gigabytes
- Non-volatile memory
- Ethernet TCPIP link and serial comms support
- Market leading signal stability
- Certificate and manual calibration features

Become a member of the ELE International web site, add this new product to a wishlist to receive a quote! Click here [Login]

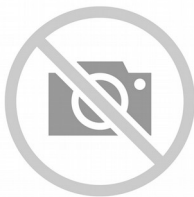
This product is now available in the USA and Canada!

Accessories



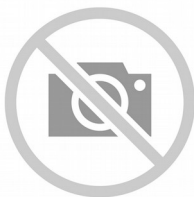
Cable, Safety/ID

Code: [27-1300/11](#)



Dual Frame Comms Cable

Code: [27-1300/10](#)



PC Cable

Code: [27-1300/12](#)

Alternatives



DSU Electronic Readout and Control System 110 V AC 60 Hz

Code: [27-1300/02](#)



Marshall Test 50

Code: [45-6810/01](#)



Marshall Test 50

Code: [45-6810/06](#)



Consolidation Transducer Assembly 10mm Travel Fitted with 5 Pin Din Plug.

Code: [27-1649](#)

Product Group: [Displacement Measurement](#),
[Displacement Transducers](#), [Vertical settlement measurement](#)

Fitted with 5 pin DIN plug.

Specification

Construction	Fully encapsulated electronics, sealed in a stainless steel case
Excitation	11 V DC
Connector	5-pin DIN type
Mounting bracket	Included as standard
Weight kg	0.45

Accessories



Axial Strain Transducer Assembly 50mm Travel Fitted with 5 Pin Din Plug.

Code: [27-1617](#)



Horizontal Displacement Transducer Assembly 15mm Travel 5 Pin Din Plug Mounting Pillar

Code: [27-1697](#)



Vertical Displacement Transducer Assembly 15mm Travel with 5 Pin Din Plug Bracket for Shear Box

Code: [27-1689](#)

Spares/Consumables



CBR Displacement Transducer

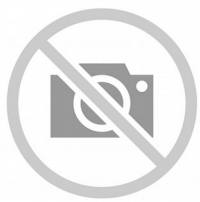
Code: [27-1706](#)

Alternatives



Transducer Extension Cable 3.0 m

Code: [27-1717](#)



Transducer Extension Cable 4.5 m

Code: [27-1719](#)



DS7.2 One-Dimensional Consolidation Program for Windows 7, 32/64 bit

Code: [27-1773](#)

Product Group: [DS7.2](#), [DS7.2 One-Dimensional Consolidation Software](#)

DS7.2 Consolidation Software provides all basic functions needed to record and analyse consolidation test data. Options are available for monitoring settlement on a log time or square-root time basis. Printouts and graphical plots are available for all stages including M_v and C_v moisture content, voids ratio plots, and initial sample conditions.



2.5 Inch Dia Upper and Lower Porous Stones for Use on EL25-0479 Series Cell.

Code: [25-0479/13](#)

Product Group: [ASTM/AASHTO consolidation cells and accessories](#), [Fixed Ring Consolidation](#)

Standards

ASTM D2435, ASTM D4546, AASHTO T216, ASTM D3877

Accessories



Consolidation Cell Complete 2.5 Inch Diameter Sample. Inc. Porous Discs and Cutting Ring.

Code: [25-0479](#)



ELE Sieve Shaker

Code: 80-0200/01

Product Group: ELE Sieve Shaker

The ELE sieve shaker is powered by an electromagnetic drive that has no rotating parts to wear making it maintenance free and extremely quiet in operation.

The unit features a triple Vertical-Lateral-Rotary vibrating action that moves the sample over the sieve producing faster more efficient sieving, while the rapid vertical movements also help keep the apertures from blinding.

The shaker is ideal for laboratory or on site use. It is robust, compact and sufficiently lightweight to be portable. The separate digital microprocessor controlled console unit incorporates a keypad for setting the sieving program and is isolated from any effects of vibration from the shaker.

As standard the shaker includes, timer 0-999 minutes, adjustable vibration intensity and adjustable intermittent or continuous operation.

Further Information

****NOT AVAILABLE FOR SALE IN THE USA****

The unit accepts up to ten 200 mm or 8 inch, full height, diameter sieves and lid and receiver, or up to six 300 mm or 12 inch diameter sieves and lid and receiver. Complete as specified. Dimensions (l x w x h) 380 x 440 x 1085 mm. For 220 - 240 V AC, 50 Hz 1ph.



Loss on Heat/Thin-Film Oven 220-240V 50/60 Hz

Code: 46-4100/01

Product Group: Asphalt and Bitumen Ovens

The Thin-Film Oven is used for determining the loss in mass of oil and asphaltic / bituminous compounds when heated with the loss on heating test method or the effect of heat and air on semisolid asphaltic / bituminous materials with the Thin-Film Oven (TFOT) method.

Further Information

Features:

- Complies to the requirements of BS 2000, ASTM D6, D1754 & AASHTO T47, T179
- The exterior is constructed from sheet steel finished in an easy clean powder-coated paint
- Interior chamber is made from stainless steel
- The unit is well insulated and has a double glass door for viewing the test chamber
- The system is controlled by a microprocessor digital controller and overheat thermostat
- Calibrated scale and tamper-proof lock
- Temperature is controlled and pre-set at 163°C +/- 1°C
- Two rotating platforms of 13.5 inches dia are supplied to perform both the tests

Side mounted controls comprise:

- Microprocessor digital control
- Independent overheat thermostat
- Mains switch
- On/Off switch for the turntable motor
- Indicator lamps

Specification

Max Temp (°C)	163
Dimensions: Internal (HxWxD)	380 x 520 x 460 mm
Dimensions: External (HxWxD)	570 x 870 x 630 mm
Insulation	Double wall
Internal material	304 stainless steel
Turntable speed (rpm)	5.5
Max power (W)	1500



Cleveland Flash Cup Apparatus

Code: 46-3310/01

Product Group: Cleveland Flash Cup Apparatus

The ELE Semi-Automatic Cleveland Open Cup flashpoint Tester is equipped with an electrically heated cup (with a variable control to set temperature rise rate), a button operated and electrically driven sweep arm and a test flame for use on natural gas. Bench mounted, the unit is incorporated in an easy to clean stainless steel case.

Standards

BS 2000-36, EN ISO 2592, ASTM D92, IP 36

Further Information

****NOT AVAILABLE FOR SALE IN THE USA****

For 220 - 240 V AC, 50 - 60 Hz, 1 ph.

Specification

Temperature Range	Ambient to 400°C
Power	500 W maximum
Ramp rate	Variable, manually controlled
Voltage	220/240 V, 50/60 Hz
Size (HxWxD)	33 x 31 x 29 cm
Weight	6.5 kg



BS/EN Ring and Ball Apparatus

Code: [46-4605](#)

Product Group: [Ring and Ball Apparatus](#)

With 2 shouldered pattern rings, 2 ball-centring guides and 2 balls. The apparatus has a support frame and is retained in a heat resistant container.

Standards

EN 1427, BS 2000-58, UNI 4161, UNE 7111, DIN 52011, NFT66-008, AASHTO T53, ASTM D36, BS 2000

Further Information

****NOT AVAILABLE FOR SALE IN THE USA****

Accessories



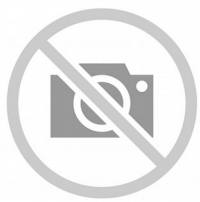
Electrical Hotplate with Integral Magnetic Stirrer

Code: [46-4825/01](#)



Thermometer

Code: [82-5272](#)



Thermometer

Code: [82-5274](#)



Electrical Hotplate with Integral Magnetic Stirrer

Code: [46-4825/01](#)

Product Group: [Ring and Ball Apparatus](#)

Circular-top analogue magnetic hotplate stirrer.

Speed controls for constant speed (even during load changes).

Anti-corrosive ceramic steel plate with excellent thermal conductivity.

Long life brushless motor.

High magnetic adhesion.

CE marked.

Standards

EN 1427, BS 2000-58

Further Information

****NOT AVAILABLE FOR SALE IN THE USA****

Specification

Temperature range	Ambient-340 Deg.C
Stirring speed	0-1500 rpm
Max. Viscosity	40 cP/ mPas
Heating rate (1 litre water)	6K/min
Motor type	Brushless
Stirring capacity	20L
Plate diameter	5.3"
Plate material	Ceramic coated steel
Dimensions	11"L x 6 1/4"W x 3"H
Weight	6lbs



Thermometer

Code: [82-5272](#)

Product Group: [Ring and Ball Apparatus, Non Hazardous Glass Thermometers](#)

Mercury-free with a range of -10.0°C to + 210.0°C and graduated every 1°C. Immersion up to 76 mm

Standards

EN 1427, BS 2000-58

Further Information

****NOT AVAILABLE FOR SALE IN THE USA****



Air Compressor

Code: [38-0320/01](#)

Product Group: [ELE Flame Photometer](#)

Supplies air at 6 litres/minute at a pressure of 1 kg/cm², for use with 38-0200/01 Flame Photometer.

Standards

EN 196-21, ASTM C114, TEST 17

Further Information

****NOT AVAILABLE FOR SALE IN THE USA****



Rotatest 3000

Code: 45-3815/01

Product Group: Asphalt Centrifuge Extractors

Centrifuge extractor used to determine the quantitative amount of bitumen in bituminous paving mixtures. Variable speed control from 0 to 3600 rpm through the front panel mounted control knob and brake control included for rapid deceleration.

Precision machined aluminium removable cover with integral cup for adding solvent, with sealed cast aluminium housing.
For 220 V AC, 50 - 60 Hz, 1ph.

Standards

EN 12697-1, ASTM D2172, AASHTO T164

Further Information

****NOT AVAILABLE FOR SALE IN THE USA****

3000 g capacity. Supplied with 100 Filter Discs. For 220 V AC, 50 - 60 Hz, 1ph.

Accessories



Bowl - 2.5 litre

Code: 81-5020



Desiccator - Non-vacuum

Code: 82-2100



Evaporating Dish - 100 x 40 mm

Code: [82-1970](#)



Filter Discs Pack of 100

Code: [45-3807](#)



Hotplate

Code: [78-2950/01](#)



Measuring Cylinder - Glass 100 ml

Code: [82-0380](#)



Measuring Cylinder - Glass 1000 ml

Code: [82-0500](#)



Sample Tray - 306 x 306 x 38 mm

Code: [81-4020](#)



Silica Gel

Code: [82-7091](#)



Volumetric Flask - 100 ml

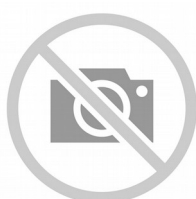
Code: [82-1000](#)



Volumetric Flask - 1000 ml

Code: [82-1060](#)

Spares/Consumables



Replacement bowl for Rotatest 3000 centrifuge extractor

Code: [45-3815/10](#)

Alternatives



Muffle Furnace

Code: [83-4170/01](#)



Rotatest 1500

Code: [45-3810/01](#)



ADR Touch Control Pro 2000 Auto Compression Machine

Code: 36-5125/01

Product Group: General Purpose Compression Machines

The ADR Touch Control Pro is supplied complete with safety gates ready for testing 300 x 150 mm diameter cylinders. When used for cube testing distance pieces of the appropriate size must be ordered separately.

Further Information

****Not available for sale in the USA****

The ADR Touch Control Pro will deliver all the features and quality of the established ADR-Auto range, with its 20 year history, but with a new sleek design and additional capabilities. The console assembly consists of an ADR Touch Control Pro and power base which can be used with all existing concrete and cement frames

USER INTERFACE

The new ADR Touch Control Pro has an improved user interface providing a high quality platform for testing that will enhance the performance of our compression machines. It now has a larger 7-inch colour touch screen with a higher definition display, allowing easier observation of test progress. A favourites option is also available, allowing users to save the most common set-ups for immediate access, without the need for navigating through selection menus.

USER FLEXIBILITY

The ADR Touch Control Pro has a unique flexible head with rotation capabilities of 75-degrees and a 45-degree tilt, improving usability and comfort for individual users. It is available with four languages English, Spanish, Portuguese and French, making it even more user-friendly and accessible to a wider audience. The new LAN connectivity feature lets the operator use the PC based APP (ELE Logger) to download test results away from the test area. User flexibility has also increased with the new ADR Touch Control Pro as it can now be operated remotely, so tests can be initiated away from the test area. Many issues can be resolved quickly by our service team through the new remote diagnostics feature and updating to the latest version of software has never been easier.

COMPATIBILITY

The all new dual sensor capabilities allow users to test both concrete and cement samples on one frame. The ADR Touch Control Pro is compatible with all existing compression frames and upgrade kits are also available. The upgrade kits can be used to convert existing ADR-Auto consoles to the new Automatic Digital Control Readout.

TESTING TIMES

The new generation ADR Compression Machines have an increased control over the pace rate, which allows users to run the pace rate higher than average, but still within standard. This produces an average time saving of 10% for a typical 150mm cube sample.

ELECTRICAL

Reduced component count and no wire design results in increased reliability and serviceability.

New low voltage interlocks and e-stop has increased safety. The ADR Touch Control Pro has the latest Arm Core Processor technology which has improved the processing power and speed.

Specification

Capacity	2000 kN
Cubes (Concrete)	Up to 200 mm
Cylinders (Concrete)	Up to 160 x 320 mm
Blocks	n/a
TFV and ACV	Yes
Voltage Supply	220-240 V 50 Hz 1 Ph
Frame Type	Welded
Max vert. Clearance	375 mm
Max hor. Clearance	355 mm
Platen Sizes	Lower , Upper 222 mm
Overall Dimensions	450 x 780 x 1225 mm

Accessories



100 kN Flexural Fitting Kit ADR Auto for 220 - 240 V AC, 50 Hz, 1 ph

Code: [37-6135/01](#)



100 kN Flexural Fitting Kit ADR Auto for 220 - 240 V AC, 60 Hz, 1 ph

Code: [37-6135/06](#)



2000 kN Load Calibration Device complete with Handheld Readout Unit & Calibration Certificate ISO376

Code: [37-8315](#)



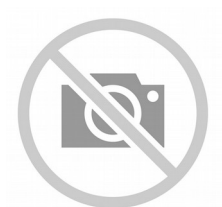
Flexible Hose

Code: [5038B0027](#)



Impact Printer Rs232 Serial Connection. Supplied Complete with 1 Paper Roll.

Code: [37-4859/01](#)



Standard Distance Piece - 100 mm Depth

Code: [37-5100](#)



Standard Distance Piece - 20 mm Depth

Code: [37-4980](#)



Standard Distance Piece - 50 mm Depth

Code: [37-5000](#)



Standard Distance Piece - 60 mm Depth

Code: [37-5020](#)



Standard Distance Piece - 80 mm Depth

Code: [37-5050](#)

Spares/Consumables



Pressure transducer, 0-700bar, 0.05 to 10v DC Output

Code: [6014A0062](#)

Alternatives



ADR Touch Control Pro 2000 Auto Compression Machine

Code: [36-5125/02](#)



ADR Touch Control Pro 2000 Auto Compression Machine

Code: [36-5125/06](#)



Standard Distance Piece - 80 mm Depth

Code: [37-5050](#)

Product Group: [Distance Pieces](#)

Further Information

****Not available for sale in the USA****



Standard Distance Piece - 100 mm Depth

Code: [37-5100](#)

Product Group: [Distance Pieces](#)

Further Information

****Not available for sale in the USA****



Standard Distance Piece - 20 mm Depth

Code: [37-4980](#)

Product Group: [Distance Pieces](#)

Further Information

****Not available for sale in the USA****



100kN Flexural (Beams) Frame. Supplied Without Specimen Bearers and Fitting Kit.

Code: [37-6130](#)

Product Group: [Flexural Testing for Beams, Flexural Frame Attachments](#)

- Open sided for ease of specimen loading
- Meets EN 12390-5, 1521, 13161, 772-6 and ASTM C78 for standard section beams
- Optional ball seating assembly

This rigidly constructed, open sided frame is suitable for testing 100 mm and 150 mm square-section beams. The frame supports a hydraulic ram and upper sub-platen assembly incorporating a spherical seating. The upper and lower sub-platens will accept various specimen loading bearers, which are supplied separately.

Please note, a flexural fitting kit is required, see the accessories tab for options.

Standards

BS 1881-118, EN 12390-5

Accessories



100 kN Flexural Fitting Kit ADR Auto for 110 - 120 V AC, 60 Hz, 1 ph

Code: [37-6135/02](#)



100 kN Flexural Fitting Kit ADR Auto for 220 - 240 V AC, 50 Hz, 1 ph

Code: [37-6135/01](#)



100 kN Flexural Fitting Kit ADR Auto for 220 - 240 V AC, 60 Hz, 1 ph

Code: [37-6135/06](#)



100kN Flex Fitting Kit For Accu-Tek

Code: [1925PL0078](#)



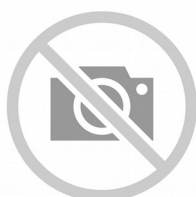
100kN Flexural Fitting Kit (ADR) Used for Connecting Flexural Frames to ADR Compression Machines.

Code: [37-6138](#)



ASTM C78 Specimen Bearer Assembly Case-Hardened 38mm Dia X 160mm Length.

Code: [37-6132](#)



Ball Seating Assembly 150mm Dia Platens.

Code: [37-6133](#)



BS 1881 Specimen Bearer Assembly 38mm Dia X 160mm Length.

Code: [37-6131](#)



Standard Distance Piece - 100 mm Depth

Code: [37-5100](#)



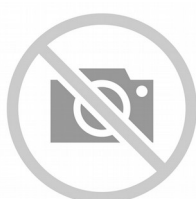
Standard Distance Piece - 20 mm Depth

Code: [37-4980](#)



Standard Distance Piece - 50 mm Depth

Code: [37-5000](#)



Standard Distance Piece - 60 mm Depth

Code: [37-5020](#)



Standard Distance Piece - 80 mm Depth

Code: [37-5050](#)

Alternatives



Accu-Tek Touch 250 Automatic Compression Machine 110 V 60Hz

Code: [36-1690/02](#)



Accu-Tek Touch 250 Automatic Compression Machine 220-240 V 50Hz

Code: [36-1690/01](#)



Accu-Tek Touch 250 Automatic Compression Machine 220-240 V 60Hz

Code: [36-1690/06](#)



ADR Touch Manual Power Pack Including Fitting Kit 110V 60Hz 1Ph

Code: [36-6165/02](#)



ADR Touch Manual Power Pack Including Fitting Kit 220-240V 50/60Hz 1Ph

Code: [36-6165/01](#)



BS 1881 Specimen Bearer Assembly 38mm Dia X 160mm Length.

Code: [37-6131](#)

Product Group: [Flexural Testing for Beams](#)

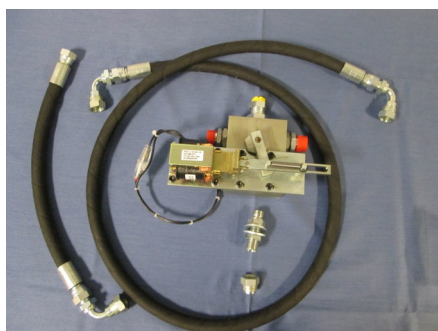
Comprising 2 self-aligning upper bearers, 1 self-aligning and 1 fixed lower bearer. Roller bearers are 38 mm diameter x 160 mm long. Suitable for 3- or 4-point flexural testing of beams.

Standards

BS 1881-118, EN 12390-5

Further Information

****Not available for sale in the USA****



100 kN Flexural Fitting Kit ADR Auto for 220 - 240 V AC, 50 Hz, 1 ph

Code: [37-6135/01](#)

Product Group: [Accessories to connect ELE compression machines to the flexural/transverse frames](#)

These flexural frames can be used with a wide range of ELE compression machines. Simply select one of two fitting kits designed to link the flexural frame to either the ADR-Auto range of compression machines.

Further Information

****Not available for sale in the USA****



Ball Seating Assembly 150mm Dia Platens.

Code: 37-6133

Product Group: [Flexural Testing for Beams, Flexural Frame Attachments](#)

Comprising a ball seating assembly with 150 mm diameter platen and a lower platen 150 mm diameter x 16 mm thick. Suitable for testing low-strength specimens.

Further Information

Specimen size (effective height)
Distance pieces required

40 mm
2 x 100 mm
1 x 80 mm

50 mm
2 x 100 mm
1 x 50 mm
1 x 20 mm

70.7 mm
2 x 100 mm
1 x 50 mm

100 mm
2 x 100 mm
1 x 20 mm



6x12 Concrete Cyl. Compressometer/Extensometer - English

Code: 37-5625

Product Group: [Strain Gauge, Concrete Cylinder Compressometer-Extensometer](#)

With English reading dial indicators.

MEET ASTM C469

- Used to determine Young's Modulus and Poisson's Ratio in concrete cylinders per ASTM C469.
- Compressometers come with one dial to measure axial strain, used for Young's Modulus.
- Compressometer/Extensometers have an extra collar and dial to also measure radial strain, used for Poisson's Ratio.

Standards

ASTM C469

Specification

Sample Size.	6" diam. x 12" l. (152 x 305 mm)
Frame	Aluminum-magnesium alloy.
Contact Points.	Steel.
Control Rods.	Stainless steel.
Dial Indicators.	Two included.
Readability.	to 50 micor inches (0.00124 mm).
Weight.	Net 15 lbs. (6.8 kg).

Alternatives



4x8 Concrete Cyl. Compressometer/Extensometer - English

Code: 37-5624



6x12 Concrete Cyl. Compressometer - Digital Indicators

Code: [37-5628](#)



6x12 Concrete Cyl. Compressometer - Metric

Code: [37-5626](#)



Slump Test Set BS & ASTM. C/W Slump Cone Base Plate Steel Rule Tamping Rod & Funnel.

Code: [34-0192](#)

Product Group: [Slump Test](#)

BS and ASTM comprising of slump cone, base plate, steel rule, tamping rod and funnel.

Further Information

****NOT AVAILABLE FOR SALE IN THE USA****

Accessories



Sample Tray - 1200 x 1160 x 50 mm

Code: [81-4230](#)



Shovel - With flat blade

Code: [81-0240](#)

Spares/Consumables



Stopwatch

Code: [81-0521](#)



Pocket Concrete Penetrometer

Code: 38-2695

Product Group: Concrete Mortar Penetrometer,
Concrete Mortar Penetrometer, Setting Time by
Penetration Resistance

- Stainless steel
- Corrosion resistant
- Two versions available for Concrete and

Soils

- Easy to read scales
- Complies to ASTM C403 and AASHTO T197

Standards

ASTM C187, ASTM C191, ASTM C780

Specification

Needle	Steel shaft; 1/20 sq. in. surface area.
Range	0 to 700 psi.
Scale	Direct-reading; indicator sleeve holds reading until released.
Dimensions	3/4" (19 mm) diam. x 7" (178 mm) long.
Carrying Case	Canvas, with belt-loop.
Weight	Net 8 oz. (227 g).



150mm Cube Mould 4-Part Clamp Type. Cast Iron Construction. BS EN Compliant.

Code: [34-4570](#)

Product Group: [Cube Moulds](#), [Cube Moulds](#)

4-part with clamp attached base plate.

Standards

BS 1881-108, EN 12390-1, EN 12390-2

Specification

Construction	Bolted sides and clamped base plate
Finish	Painted
Weight	42 lb (19.1 kg)

Accessories



Aluminium Scoop Large

Code: [81-0220](#)



Compacting Bar 25mm Sq X 380mm

Code: [34-2910](#)



Float - Plasterer's type

Code: [81-0340](#)



Mould Oil (25 Litre Drum)

Code: [82-7341](#)



Wire Brush

Code: [81-0705](#)

Spares/Consumables



Soft Headed Mallet.

Code: [29-5020](#)

Alternatives



Vibrating Table 600 X 400mm Table Top. 220-240V 50Hz 1Ph. Supplied with clamping assembly

Code: [34-6250/01](#)



100mm Cube Mould 4-Part Clamp Type. Cast Iron Construction. BS EN Compliant.

Code: [34-4520](#)

Product Group: [Cube Moulds](#), [Cube Moulds](#)

4-part with clamp attached base plate.

Standards

EN 12390-1, EN 12390-2

Specification

Construction

Bolted sides and clamped base plate

Finish

Painted

Weight

20 lb (9.1 kg)

Accessories



Aluminium Scoop Large

Code: [81-0220](#)



Compacting Bar 25mm Sq X 380mm

Code: [34-2910](#)



Float - Plasterer's type

Code: [81-0340](#)



Mould Oil (25 Litre Drum)

Code: [82-7341](#)



Wire Brush

Code: [81-0705](#)

Spares/Consumables



Soft Headed Mallet.

Code: [29-5020](#)

Alternatives



Vibrating Table 600 X 400mm Table Top. 220-240V 50Hz 1Ph. Supplied with clamping assembly

Code: [34-6250/01](#)



Vibrating Poker 22mm Dia Tip 250mm Long. 220-240V 50/60Hz 1Ph.

Code: [34-6431/01](#)

Product Group: [Vibrating Poker](#)

- High amplitude and speed
- Flexible shaft for long life

Used as an internal means of vibratory compaction. The poker is inserted into the concrete which is then compacted by the high frequency vibration action. For use in either laboratory or site environments, the diameter of the vibrating tip must not exceed 25% of the smallest dimension of the specimen.

Standards

EN 12390-2

Further Information

****NOT AVAILABLE FOR SALE IN THE USA****

For 220 - 240 V AC, 50 - 60 Hz, 1 ph

Specification

Tip Dimensions	22 mm diameter x 250 mm long
Shaft dimensions	2.0 m long
Speed	12,000 vibrations/min.
Overall Dimensions	200 x 300 x 350 mm
Weight	7 kg



Electronic Balance - 8 000 g x 0.1 g

Code: [78-5457/01](#)

Product Group: [Electronic Balances](#)

Further Information

****Not available for sale in the USA****

Specification

Capacity resolution	8000 g x 0.1 g
Pan size	225 x 275 mm
Mains and battery	Yes
Dimensions (w x d x h)	315 x 355 x 110 mm
Weight	4 kg
Weighing units	g, kg, lb, lb:oz, oz
Repeatability	0.1 g



225 Litre Drying Oven

Code: [78-1250/01](#)

Product Group: [Percentage Refusal Density \(PRD\)](#),
[Oven Drying Method](#), [Oven Drying Method](#), [Oven Drying Method](#)

Standards

EN 12697-32, EN 13280-4, BS 598-104, BS 1377

Specification

Capacity	225 litres
External Dimensions (l x w x h)	540 x 1040 x 940
Internal Dimensions (l x w x h)	440 x 920 x 600
Fluctuation	± 0.75°C
Rated power heater elements	2000 W
Shelves supplied	3
Shelf positions	4
Weight	80 kg

Alternatives



100 Litre Drying Oven

Code: [78-1225/01](#)



150 Litre Drying Oven

Code: [78-1235/01](#)



50 Litre Drying Oven

Code: [78-1215/01](#)

Product Sheet

www.ele.com
+44 (0) 01525 249 200



Drying Oven 425 Litre Capacity

Code: [78-0135/01](#)



Vicat Frame

Code: [38-2010](#)

Product Group: [Vicat Method](#)

Complete with consistency plunger, 10 mm diameter.
Requires one initial or final set needle to make up test weight to 300g.

Standards

EN 196-3, EN 13454-2, ASTM C187, ASTM C191

Further Information

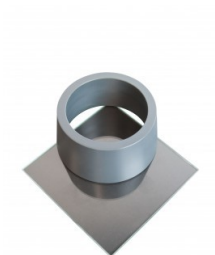
****NOT AVAILABLE FOR SALE IN THE USA****

Accessories

ASTM Initial Set Needle

Code: [38-2620](#)





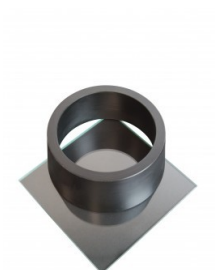
ASTM Vicat Mould

Code: [38-2660](#)



EN Initial and Final Set Needle

Code: [38-2110](#)



EN Vicat Mould

Code: [38-2300](#)



Engineer's Steel Rule

Code: [81-0805](#)



Harvard Trip Balance

Code: [78-7090](#)



Timer Clock

Code: [81-0518](#)



Vicat Mould

Code: [38-2200](#)



Weights for Harvard Trip Balance

Code: [78-7110](#)

Spares/Consumables



Consistency Plunger

Code: [38-2010/10](#)



EN Initial and Final Set Needle

Code: [38-2110](#)

Product Group: [Vicat Method](#)

1.13mm diameter and 1.13mm diameter with special footing.

Standards

ASTM C187, ASTM C191

Further Information

****NOT AVAILABLE FOR SALE IN THE USA****

Accessories

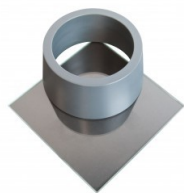
ASTM Initial Set Needle

Code: [38-2620](#)



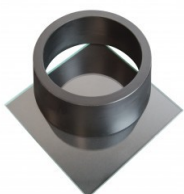
ASTM Vicat Mould

Code: [38-2660](#)



EN Vicat Mould

Code: [38-2300](#)



Engineer's Steel Rule

Code: [81-0805](#)



Harvard Trip Balance

Code: [78-7090](#)

Vicat Mould

Code: 38-2200



Weights for Harvard Trip Balance

Code: 78-7110

Spares/Consumables

Consistency Plunger

Code: 38-2010/10



Alternatives

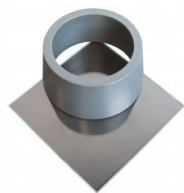
ASTM Initial Set Needle

Code: 38-2620



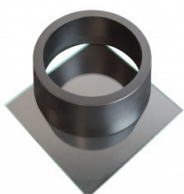
ASTM Vicat Mould

Code: [38-2660](#)



EN Vicat Mould

Code: [38-2300](#)



Engineer's Steel Rule

Code: [81-0805](#)



Harvard Trip Balance

Code: [78-7090](#)



Vicat Mould

Code: [38-2200](#)



Weights for Harvard Trip Balance

Code: [78-7110](#)



Vicat Mould

Code: [38-2200](#)

Product Group: [Vicat Method, Automatic Vicat](#)

Accessory: manufactured from brass and supplied complete with a ring and glass base plate.

Further Information

****NOT AVAILABLE FOR SALE IN THE USA****

Accessories

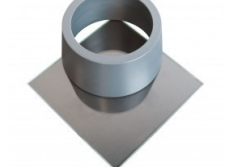
ASTM Initial Set Needle

Code: [38-2620](#)



ASTM Vicat Mould

Code: [38-2660](#)



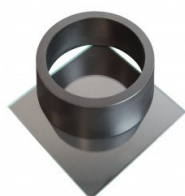
EN Initial and Final Set Needle

Code: [38-2110](#)



EN Vicat Mould

Code: [38-2300](#)



Spares/Consumables

Consistency Plunger

Code: [38-2010/10](#)

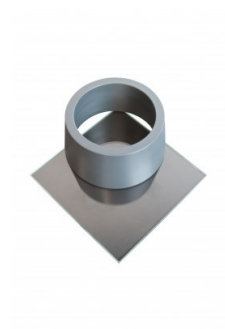


Alternatives

ASTM Initial Set Needle

Code: [38-2620](#)





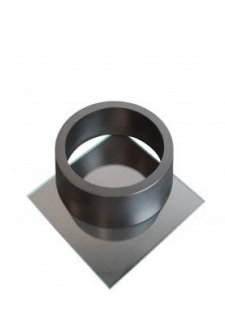
ASTM Vicat Mould

Code: [38-2660](#)



EN Initial and Final Set Needle

Code: [38-2110](#)



EN Vicat Mould

Code: [38-2300](#)



Pure Mineral Oil 1 Litre Bottle.

Code: [38-0620](#)

Product Group: [Blaine Fineness Apparatus](#),
[Determination of Fineness Blaine Apparatus](#)

Standards

EN 196-21, ASTM C204



Reference Cement

Code: [38-0645](#)

Product Group: [Blaine Fineness Apparatus](#),
[Determination of Fineness Blaine Apparatus](#)

Accessory: 5g sachet.

Standards

ASTM C204, AASHTO T153



Filter Papers

Code: [38-0650](#)

Product Group: [Determination of Fineness Blaine Apparatus](#)

Accessory: 12.7mm diameter. Box of 100.

Standards

ASTM C204

Further Information

****NOT AVAILABLE FOR SALE IN THE USA****



Blaine Air Permeability Apparatus

Code: 38-1000

Product Group: Blaine Fineness Apparatus,
Determination of Fineness Blaine Apparatus

Standards

EN 196-6, EN 459-2, EN 13286-44, BS 4359-2, ASTM C204, AASHTO T153

Specification

Cell	Stainless steel; 12.70 \pm 0.10 mm i.d.
Disk	0.9 \pm 0.1 mm thick with 30-40 one mm diam. holes.
Plunger	Stainless steel.
Manometer	U-tube glass with ground joint, stop cock and rubber bulb assembly.
Filter Paper	12.70 mm diam.
Fluid	Pure Mineral Oil.
Weight	Net 7 lbs. (3.2 kg).

Accessories



Electronic Balance - 620 g x 0.001 g

Code: 78-5405/01



Filter Papers

Code: [38-0650](#)



Pure Mineral Oil 1 Litre Bottle.

Code: [38-0620](#)



Reference Cement

Code: [38-0645](#)

Spares/Consumables



Aspirator

Code: [38-0500/11](#)



Blaine Air Permeability Cell

Code: [38-1000/15](#)



Filter Paper

Code: [38-0652](#)



Manometer U-tube

Code: [38-1000/10](#)



Timer Clock

Code: [81-0518](#)

Product Group: [Rice Test Vibrator](#), [Watches and Clocks](#)

Accessory

Standards

EN 12697-5

Further Information

****NOT AVAILABLE FOR SALE IN THE USA****



Advanced SilverSchmidt Concrete Test Hammer

Code: 35-1500

Product Group: Surface Hardness, Surface Hardness

The SilverSchmidt ST/PC is the first integrated concrete test hammer featuring true rebound value and unmatched repeatability.

Two factors contribute to the improved performance of this concrete test hammer over its predecessors:

- Velocity based detection of the rebound quotient
- The lightweight hybrid design of the impact plunger is made from aerospace alloy, matched to the elastic properties of the concrete and equipped with a hardness steel cap

Independent validation testing by BAM (Federal Institute for Materials Research and Testing, Germany) has shown the SilverSchmidt ST/PC to have less dispersion than the classical concrete test hammer over the entire range.

The unique design and high quality construction of the concrete test hammer SilverSchmidt ST/PC makes rebound hammer testing quicker and more accurate than ever before.

Standards

EN 12504-2, EN 13791, ASTM C805

Further Information

- The SilverSchmidt ST/PC concrete test hammer combines a high measurement accuracy with an unmatched repeatability.
- The rebound value requires no angular correction
- The concrete test hammer offers customer conversion curves for a wide range of compressive concrete strengths, including low f_c (<10 N/mm², 1'450 psi) and high strength concrete (up to 100 N/mm², 14'500 psi)

- A large number of measurement points can be easily collected by the concrete test hammer and automatically evaluated according to statistical data
- The concrete test hammer offers automatic conversion to the required measurement unit (MPa, N/mm², kg/cm², psi)

Specification

Technical Data	Silver Schmidt
Impact Energy	2.207 Nm
Hammer Mass	135 g
Spring Constant	0.79 N/mm
Spring Extension	75 mm (2.95")
Dimensions	55 x 55 x 255 mm (2.16" x 2.16" x 9.84")
Concrete Compressive Strengths	10-100 N/mm ² (1450-14500 psi)
Weight	570 g (1.4 lb)



Ultrasonic Concrete Tester 110-240V 50/60Hz 1Ph

Code: 35-2302/09

Product Group: Ultrasonic Detection, Ultrasonic
Concrete Test

35-2302/09 is the most versatile Concrete Tester to date. It has all the functions of the classic Concrete Tester, but offers additional benefits. Designed with laboratory use in mind, its compact size, rugged construction and optimized power consumption make it equally suitable for on-site use.

Along with the traditional transit time and pulse velocity measurement, 35-2302/09 offers path length measurement, perpendicular crack depth measurement and surface velocity measurement.

Optimized pulse shaping gives greater transmission range at lower voltage levels. This coupled with automated combination of the transmitter voltage and the receiver gain ensures an optimum received signal level, ensuring accurate and stable measurements.

The waveform can be viewed either via an external oscilloscope connection or directly on a connected PC screen.

Full remote control capability completes the package.

Complete with two 54 kHz transducers each with 3.6 metres of cable, coupling agent, carrying case and instruction manual.

Applications include pulse velocity determination, quality assessment and uniformity, modulus of elasticity measurement, curing status evaluation, crack depth estimation, assessment of fibre reinforced concrete.

Consists of display unit, 2 transducers (54 kHz), 2 BNC cables 1.5m, couplant, calibration rod, USB charger with USB-cable, 4x AA (LR6) batteries, data carrier with software, documentation and carrying case.

Standards

BS 1881-203, EN 12504-4, ASTM C597, D2845

Further Information

For 110 - 240 V AC, 50 - 60 Hz, 1 ph.

Specification

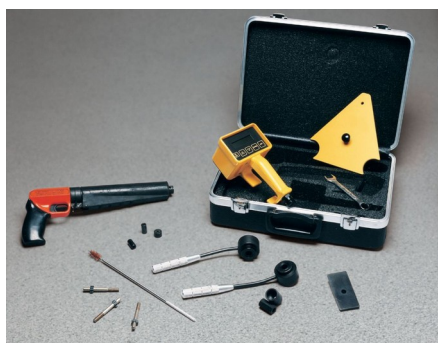
Measuring range	Up to 15 m depending on concrete quality
Bandwidth	20 to 500 kHz
Technology	Ultrasonic pulse velocity
Measuring resolution	0.1 us
Pulse voltage UPV	125 to 500 V
Receiver gain	1x, 10x, 100x, auto
Pulse shape	Square wave
Nominal transducer frequency	24-500 kHz
Number of channels	1

Spares/Consumables



Ultrasound Couplant Supplied In 250ml bottle

Code: [35-2305](#)



Windsor HP Probe System

Code: [35-1450](#)

Product Group: [Windsor HP Probe System](#)

Standards

ASTM C803

Further Information

Probe and Power Loads not included, order separately.

Specification

System Components

Drive unit, electronic measuring device, templates, measuring caps, gauge plates and carrying case.

Weight

Net 18 lbs. (8.5 kg).

Probes (Optional)

Silver Kit, Gold Kit: For tests on concrete with strengths up to 17,000 psi (11.0 MPa). Probes are made of high strength alloy, heat treated and annealed to Rockwell C 48.

Accessories



Gold Probe Kit

Code: [35-1454](#)



Silver Probe Kit

Code: 35-1452