



IF IT'S WORTH BUILDING, IT'S WORTH TESTING

Contents

www.ele.com
+44 (0) 01525 249 200



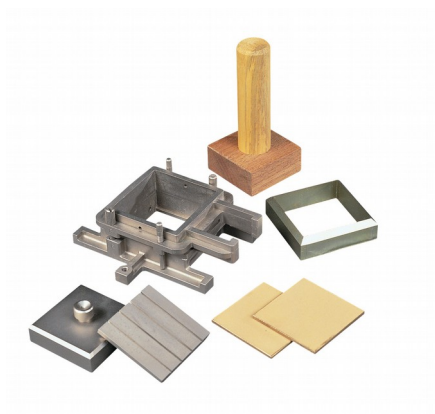
This wishlist was generated on 27/04/2018, and contains the following Products:

26-2181/10

Porous Plate 60mm Sq.

29-3729

Pocket Penetrometer.



Porous Plate 60mm Sq.

Code: [26-2181/10](#)

Product Group: [Shearbox Assemblies- Accessories and Spares](#), [Shearbox Assemblies- Accessories and Spares](#)

Standards

ASTM D3080, AASHTO T236

Spares/Consumables



2.42" Diameter Porous Stone

Code: [26-2223/10](#)



Porous Plate 2.5 Inch Diameter

Code: [26-2213/10](#)

Alternatives



2.42" Diameter Porous Stone

Code: [26-2223/10](#)



Porous Plate 2.5 Inch Diameter

Code: [26-2213/10](#)



Pocket Penetrometer.

Code: [29-3729](#)

Product Group: [In-situ Testing](#), [Pocket Penetrometer](#), [Plate Bearing Apparatus](#)

- Direct-reading scale in tons/sq. ft. and kg/sq. cm.
- Ground and polished stainless steel loading piston.
- Calibrated spring and penetrometer body plated for rust resistance and long life.
- Convenient belt-loop style carrying case.
- Optional Adapter Foot for testing very soft materials.

The Pocket Penetrometer was originally developed for use by field personnel in checking visual classification of soils. Data was compiled on several thousand unconfined compressive strength tests of silty clays and clayey soils against the penetrometer readings to develop the scale.

Further Information

IMPORTANT: the readings obtained from the pocket penetrometer do not replace laboratory test results due to the fact that a small area penetration test is inherently liable to give misleading results. The instrument should not be used for obtaining foundation design data.

Specification

Range	0.25 to 4.5 tons/sq. ft. (kg/sq. cm).
Scale Divisions	0.25 tons/sq. ft. (kg/sq. cm).
Load Piston	1/4" (6 mm) diam.; stainless steel.
Carrying Case	Canvas; belt-loop style.
Dimensions	3/4" diam. x 6-3/8" l. (19 x 162 mm).
Weight	Net 7 oz. (198 g).

Accessories



Adaptor Foot

Code: [29-3729/10](#)

Alternatives



C.O.E Cone Penetrometer

Code: [29-3741](#)



Proctor & Mortar Penetrometer Set

Code: [29-3935](#)



Proving Ring Penetrometer

Code: [29-3739](#)